

SAP Integration Suite

Modernize your integration platform

Abhijeet, SAP
5 October 2023

PUBLIC

Agenda

- ❖ Modernizing integration in the cloud – opportunities and challenges
- ❖ SAP's strategy and customer outcomes
- ❖ Introduction to SAP Integration Suite
- ❖ Simplifying migration from SAP Process Orchestration (PO) and SAP Process Integration (PI)
- ❖ Summary and next steps

SAP's investment in integration

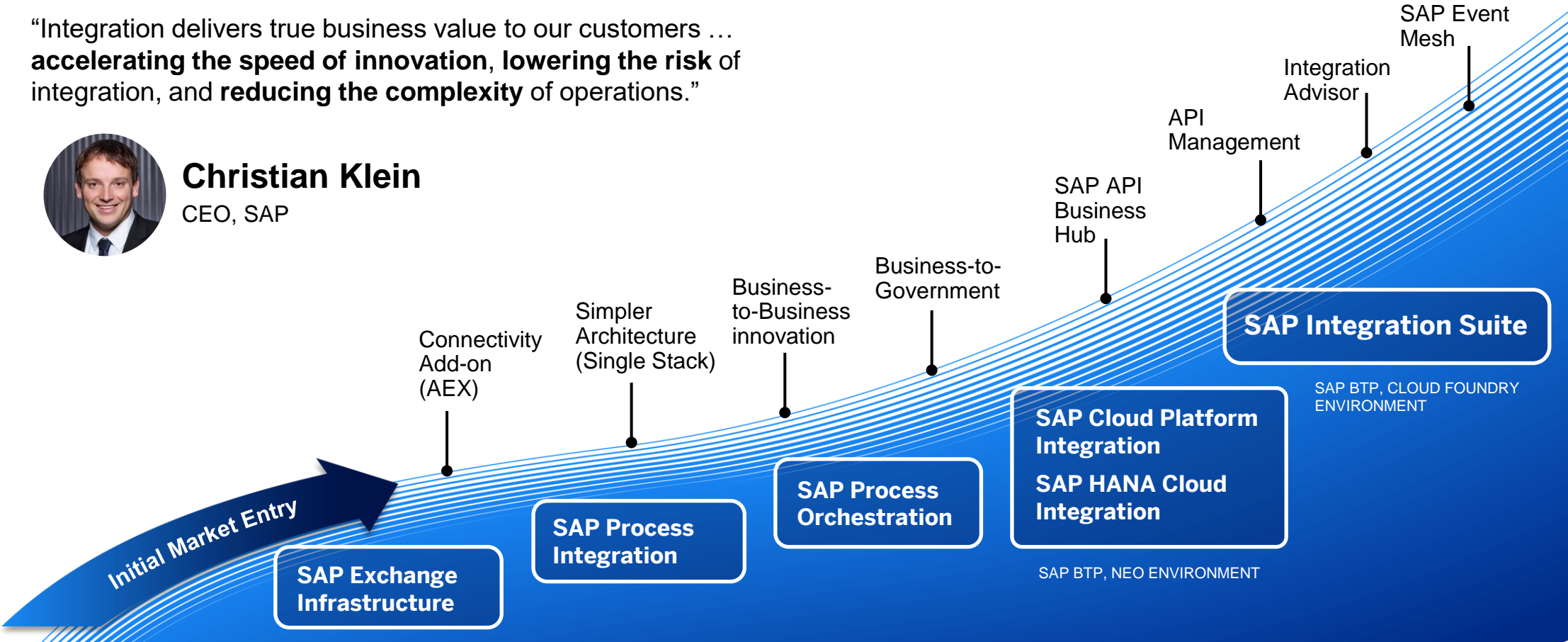
A history of continuous innovation

“Integration delivers true business value to our customers ...
accelerating the speed of innovation, lowering the risk of
integration, and **reducing the complexity** of operations.”



Christian Klein
CEO, SAP

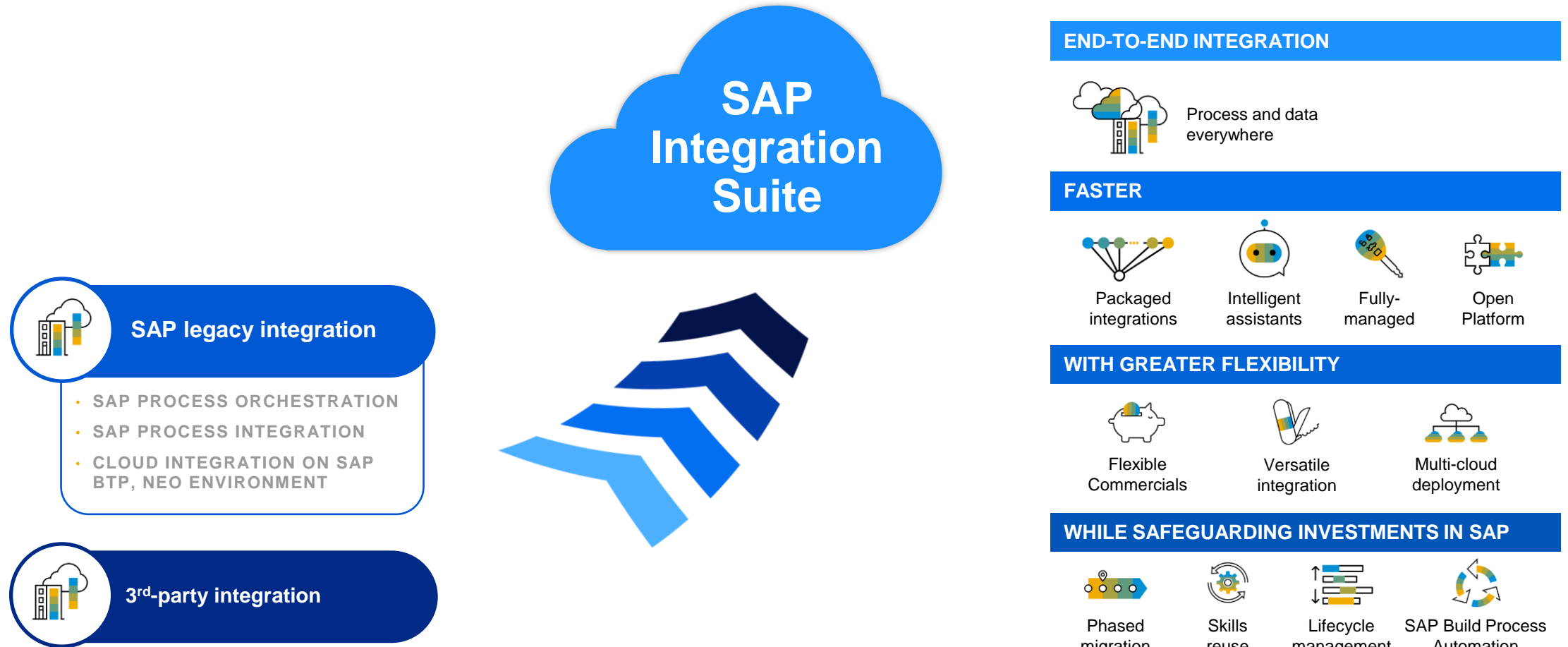
CUSTOMER VALUE



2003

TODAY

Modernize integration to power your transformation journey



Simplify and consolidate integration to achieve end-to-end-processes faster at a lower TCO

Embrace cloud-based integration to impact business performance

America's Styrenics

12 weeks

migration from SAP
Process Orchestration
to SAP Integration Suite
with ZERO downtime

[Customer Story](#)

Eneco

50 to 60%

**lower annual total
cost of ownership**
with SAP Integration
Suite

[Customer Story](#)

Murphy Oil Corp.

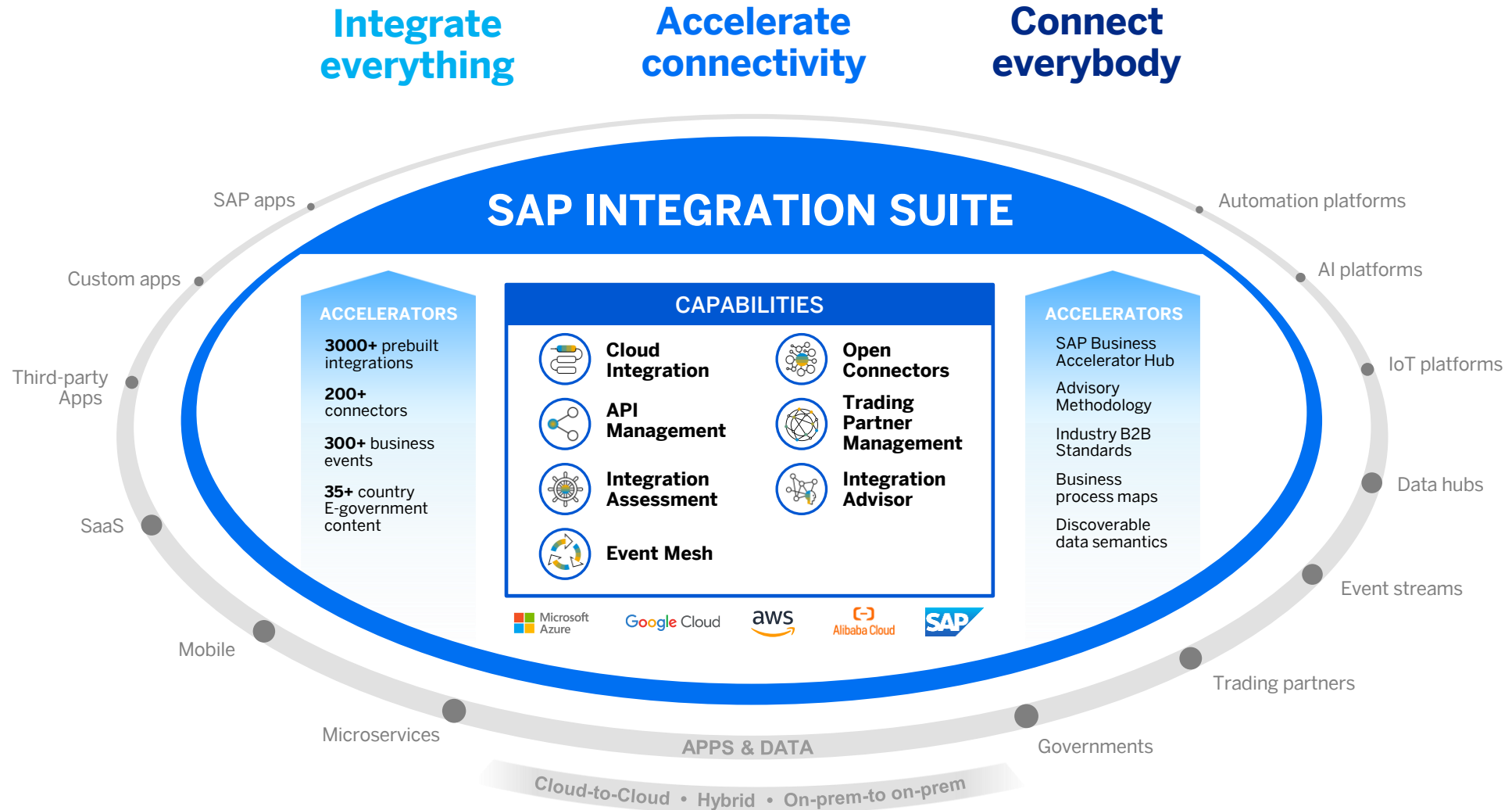
360+

**interfaces
consolidation and
migration***

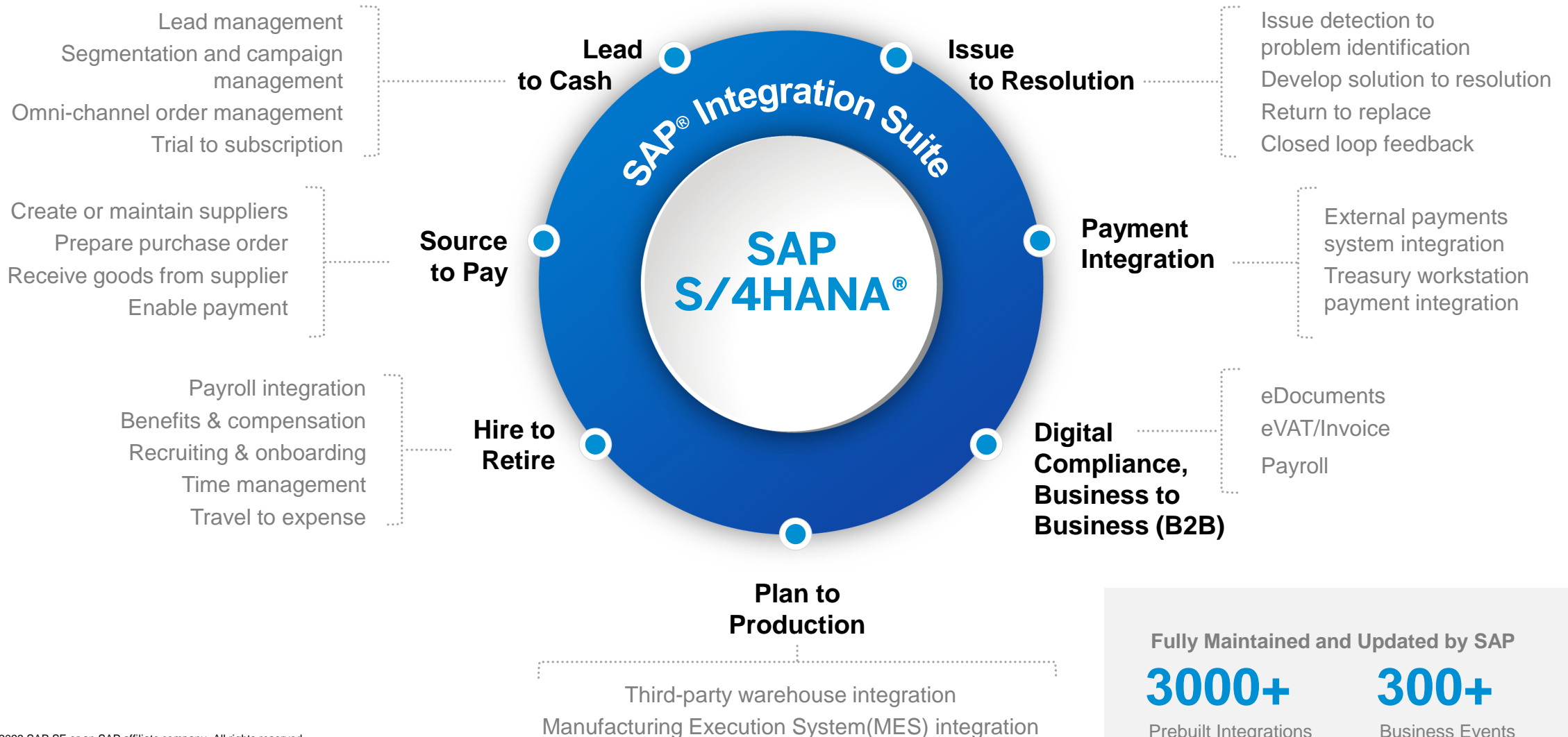
[Customer Story](#)

*Including from Boomi and MuleSoft

SAP Integration Suite - Integrate everything to innovate now



Seamlessly connect all your core business processes



Fully Maintained and Updated by SAP

3000+

Prebuilt Integrations

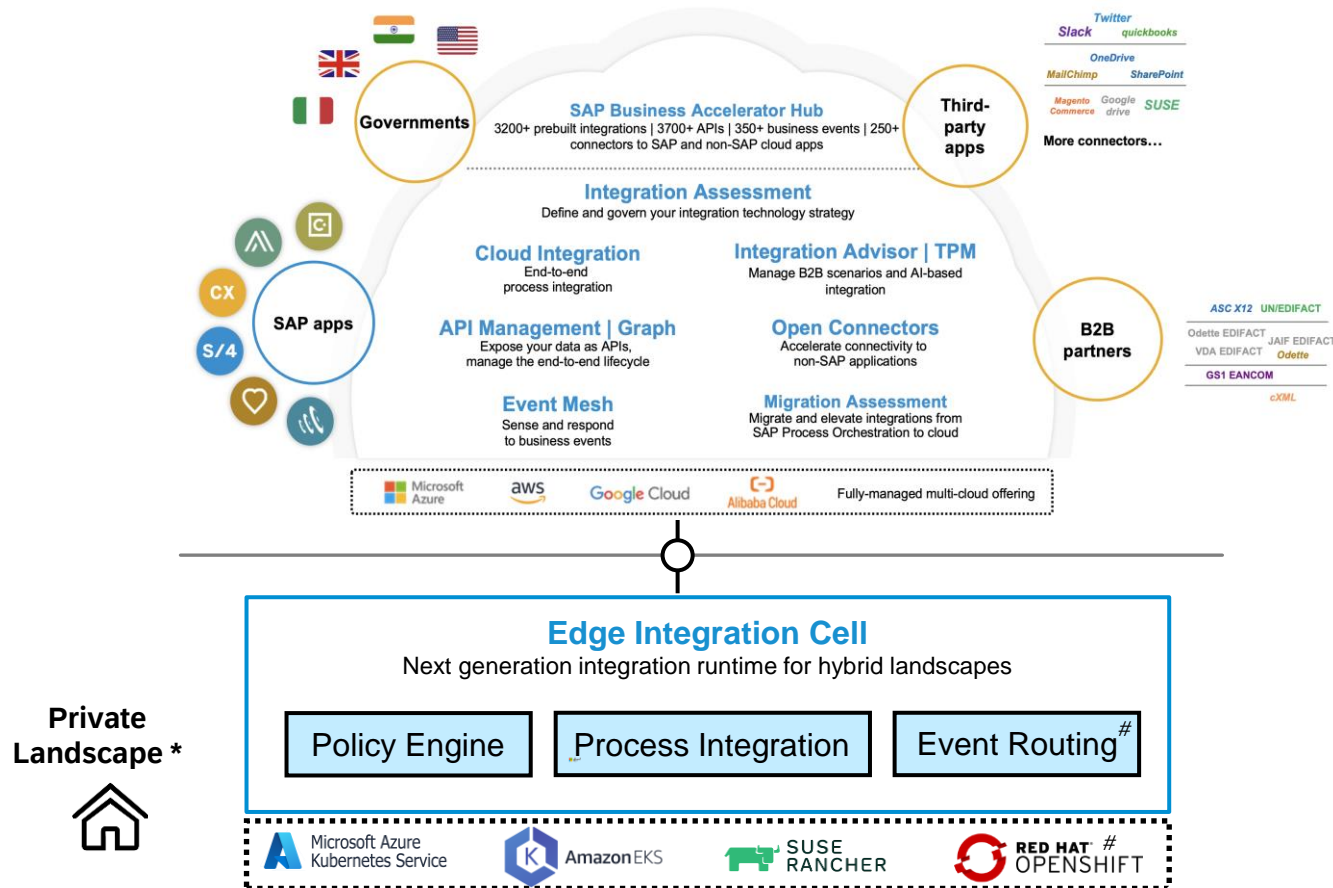
300+

Business Events

Integration Suite: Edge Integration Cell

“Hybrid” Integration Suite Runtime

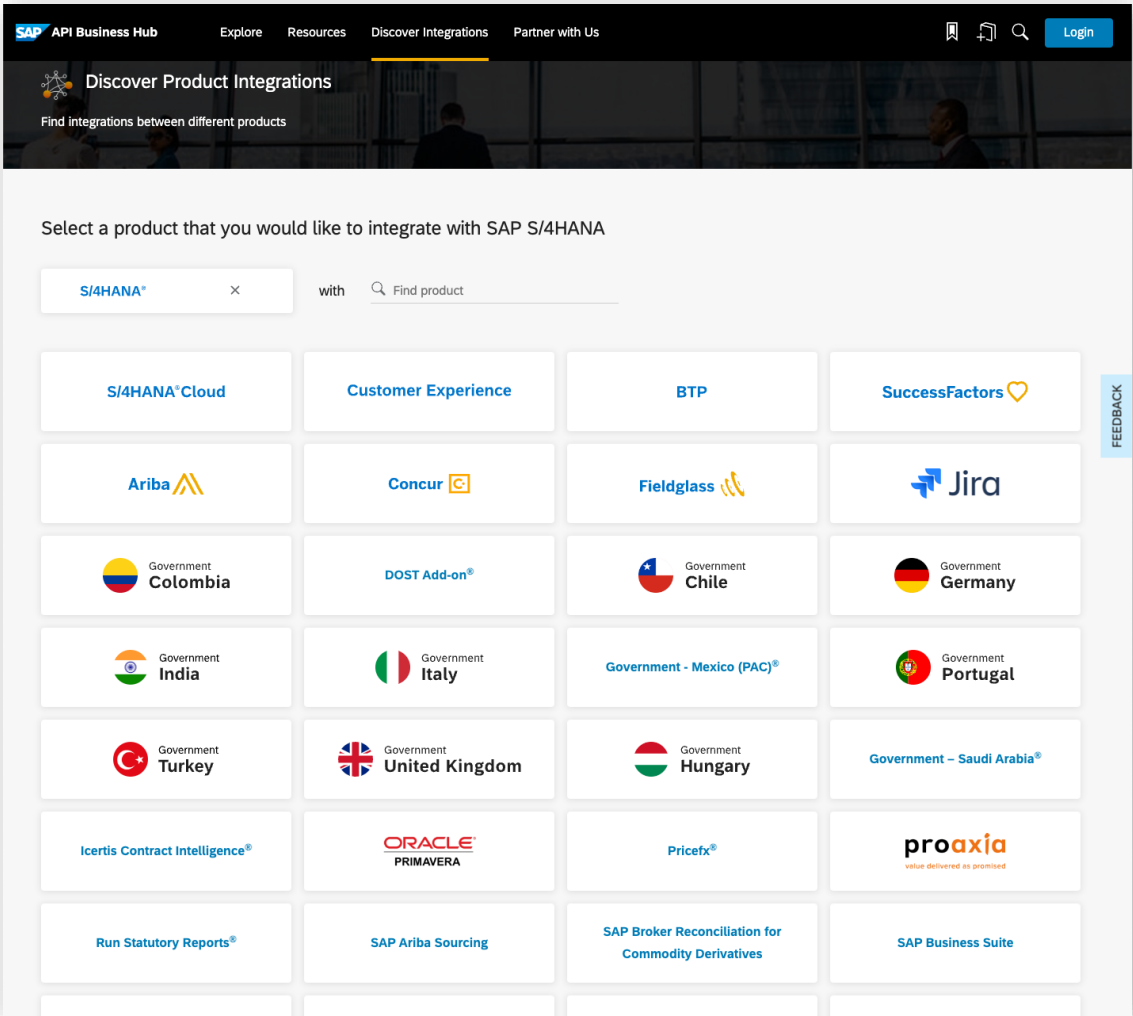
“Edge Integration Cell” is the new hybrid integration runtime, offered as an optional extension to SAP Integration Suite, enabling customers to manage APIs and run their integration scenarios within customer-managed private landscapes.



- **Flexible deployment** in customer environments
- Supports **data compliance and governance** by processing data locally and securely
- **Supported Kubernetes platforms** are Azure AKS, AWS EKS & Suse Rancher. Planned support for RedHat OpenShift by Q1.2024
- **Operations** (installation, system monitoring, software updates) is managed by customer
- No runtime impact of **temporary offline situations (up to 4 hrs)** [#]
- **Integration Suite, Integration Studio design-time** used for design and monitoring **in the Cloud**
- **Policy Engine** enables discovery, design, implementation and management of APIs and policies
- **Planned Event Routing capability will expose business events** from SAP applications to SAP Event Mesh and/or 3rd party event brokers
- Migration path for **PI/PO customers**
- **Remote OData APIs** for monitoring and operations [#]

* Private Landscape corresponds to on-premise or private cloud.
Part of the Roadmap, beyond GA

Achieve end-to-end integration across SAP and 3rd-party systems faster



Fully Maintained
and Updated by
SAP

3000+
Prebuilt Integrations

300+
Business Events

Partner with SAP to connect and automate your business



19,000+

SAP Integration Suite customers



3000+

Pre-built Integrations to accelerate integrations



3600+

Ready to use APIs in SAP API Business Hub



Billions

API calls per month across all SAP Integration Suite tenants



Billions

Messages processed per month across all SAP Integration Suite tenants



900+

Largest number of Integration Flows deployed by a single customer on a single tenant

Choose a leading integration platform as a service (iPaaS)

SAP recognized as a Leader in the 2023 Gartner® Magic Quadrant™ for the third time in a row.

SAP was positioned highest overall in Completeness of Vision among all 16 vendors evaluated.

This graphic was published by Gartner, Inc. as part of a larger research document and should be evaluated in the context of the entire document. The Gartner document is available upon request from [SAP here](#).

GARTNER is a registered trademark and service mark of Gartner, Inc. and/or its affiliates in the U.S. and internationally, and MAGIC QUADRANT is a registered trademark of Gartner, Inc. and/or its affiliates and are used herein with permission. All rights reserved.

Gartner does not endorse any vendor, product or service depicted in its research publications and does not advise technology users to select only those vendors with the highest ratings or other designation. Gartner research publications consist of the opinions of Gartner's research organization and should not be construed as statements of fact. Gartner disclaims all warranties, expressed or implied, with respect to this research, including any warranties of merchantability or fitness for a particular purpose.

© 2023 SAP SE or an SAP affiliate company. All rights reserved.

Magic Quadrant for Integration Platform as a Service, Worldwide



Source: Gartner (January 2023)

How to approach integration modernization?

Start with the right mindset and methodology



THINK STRATEGICALLY

- Invest in standardized solutions that support you for the long haul
 - New projects on SAP Integration Suite
 - Stop investments on SAP PI/PO or SAP CPI on SAP BTP, Neo environment
- Do not assume "lift and shift" is your best option



START SIMPLE

- Choose easy migration scenarios to gain experience
- Consider prebuilt integrations maintained by SAP (api.sap.com)
- Migrate simpler scenarios with least disruption to gain experience



SCALE CONFIDENTLY

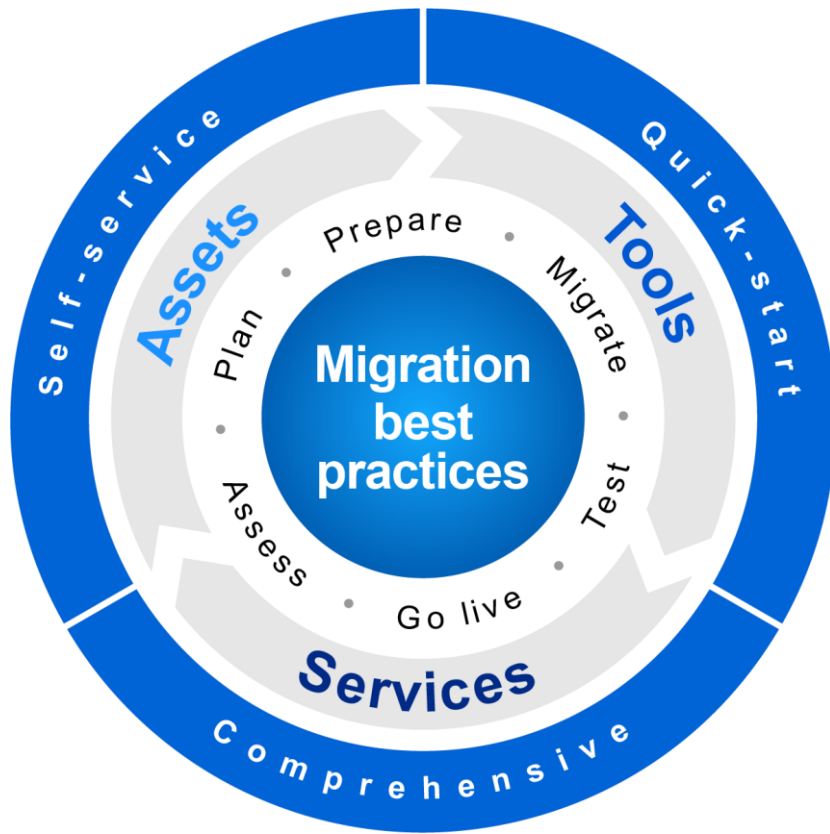
- Approach more complex scenarios
 - Highly customized / code intensive
 - Ground-to-ground
 - Business-to-Business
 - Mission critical scenarios

"Lift-and-shift migrations, or the use of automated migration tools, fail to **capitalize on the rich functionalities and opportunities of a new integration platform.**"

Gartner

How to accelerate modernization outcomes and lower risks?

Take advantage of assets, tools, and services from SAP & partners



SELF-SERVICE HELP

- **Assessment tools** to evaluate your existing environment and estimate efforts
- **Tools to automate migration and testing** from SAP and partners
- **Migration guides, documentation, and community content** to guide you through the migration lifecycle
- **Pre-built integrations** maintained by SAP



QUICK START PROGRAMS

- **SAP Migration Factory** – a **free** 2-3 week program to help assess and plan your migration from **SAP PI/PO** to **SAP Integration Suite**
- **Evolve Neo program** – **free** access to SAP experts who help you plan and prepare your migration to SAP Integration Suite on SAP BTP, **Cloud Foundry** environment
- **SAP Service and Support** offer SAP Integration Suite quick start and migration assistance with **short duration, low cost engagements**



END-TO-END SERVICES

- **SAP Services** - tailored services across the entire migration lifecycle – **including implementation services**
- **SAP Premium Engagements** (e.g. SAP MaxAttention) offers a customizable deep dive **SAP PI/PO migration workshop** along with **proof-of-concept, health-check** and **on-call go-live** support services.

Fast track your integration modernization journey to the cloud

with **SAP Migration Factory Assessment for SAP Integration Suite**

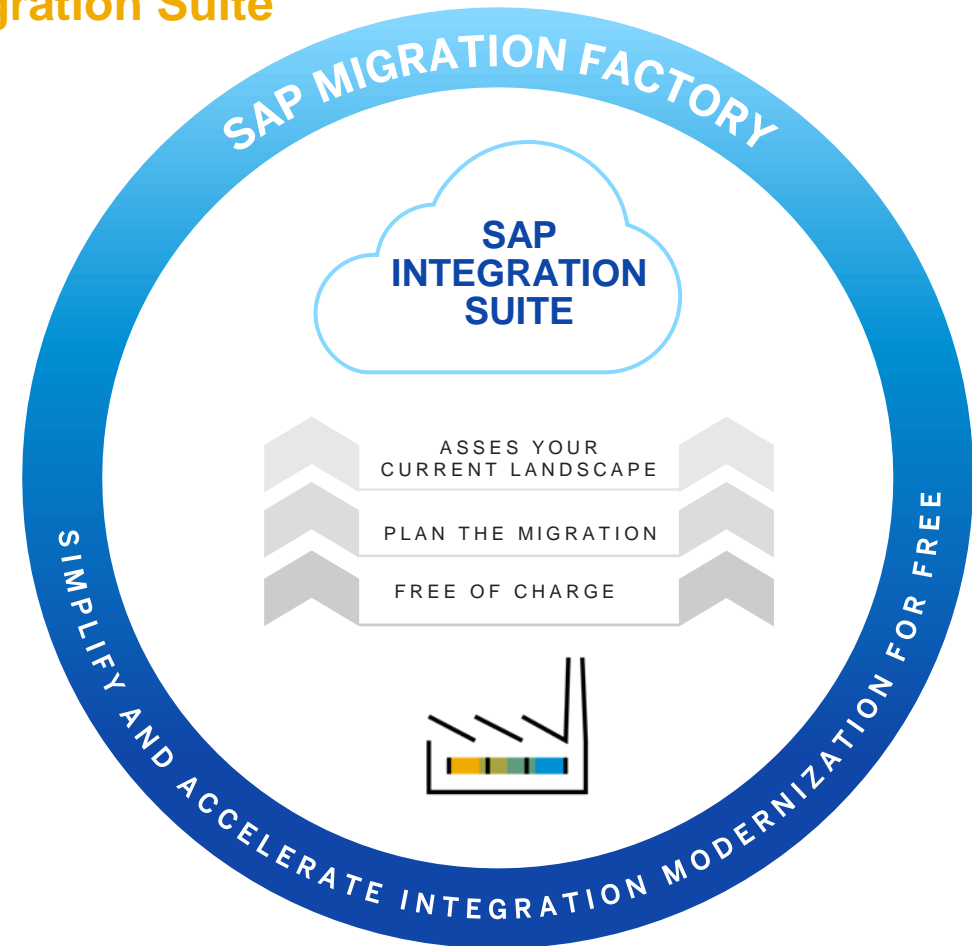
VALUE DELIVERED

Simplify and accelerate migration from
SAP Process Integration / Orchestration

Take advantage of FREE* high level integration
assessment and planning service

- Quick high-level migration assessment
- Personalized high-level migration plan from SAP Process Orchestration to Integration Suite
- 1-hr presentation of assessment results, migration complexity and estimated effort

Understand best practices and services from SAP
and ecosystem partners

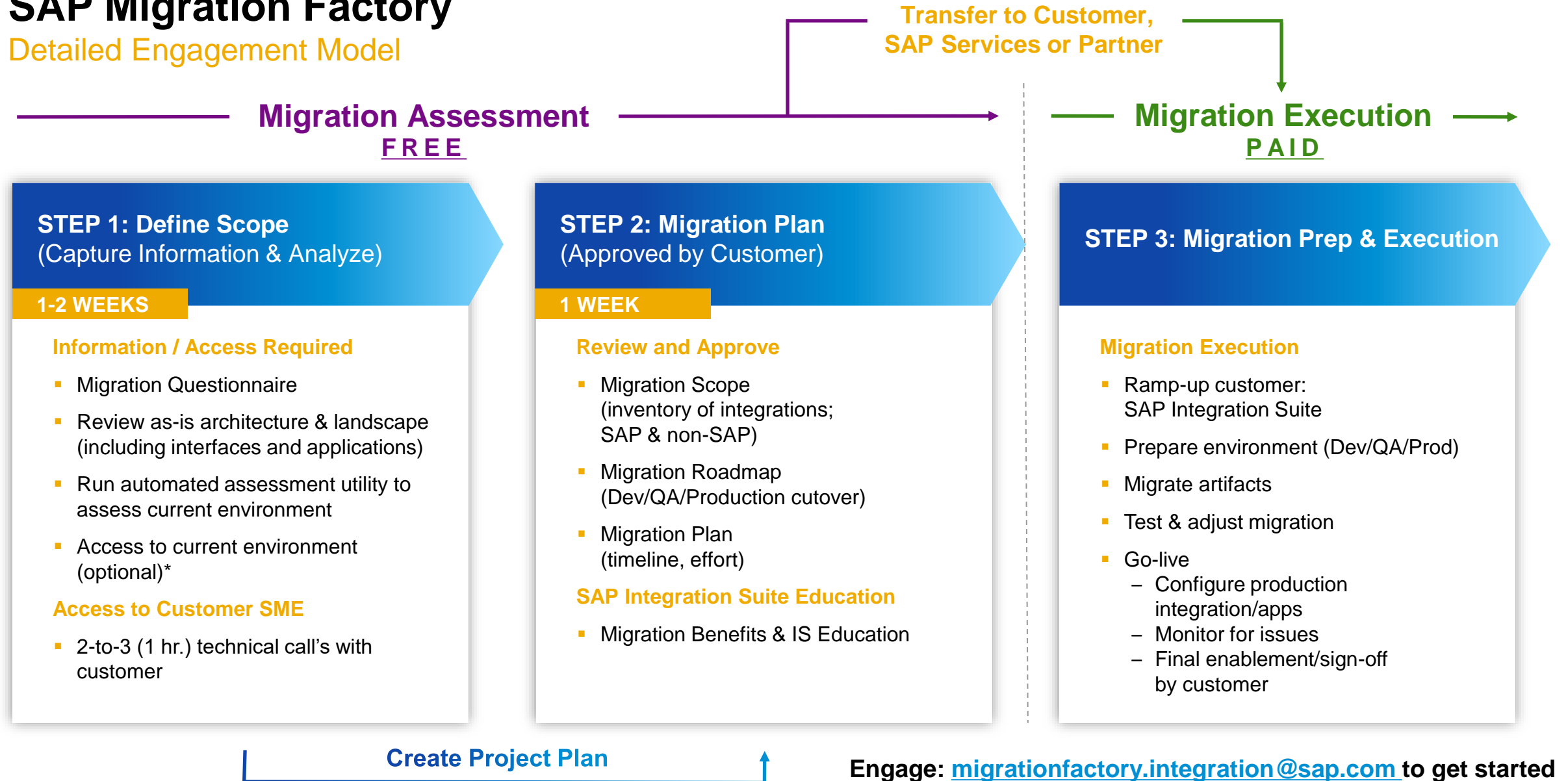


Maximize return while reducing business impact, complexity & risk

Engage: migrationfactory.integration@sap.com to get started

SAP Migration Factory

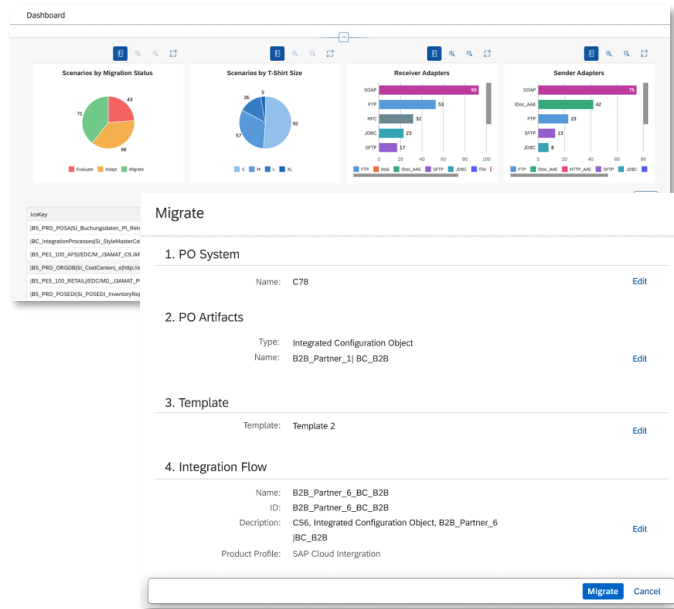
Detailed Engagement Model





Assessment and migration tools

Accelerate your migration from SAP Process Orchestrator to SAP Integration Suite



CAPABILITIES

Automated interface assessment tool

- Automatically analyze SAP Process Orchestration interfaces
- Determine migration complexity estimated effort
- Check for technical showstoppers and provide possible workarounds

Automated migration tool

- Semi-automated migration
- Template based approach (continuous enhancements)
- Automatically create integration flow in the Cloud Integration capability of SAP Integration Suite based on SAP Process Orchestration content

- Generally available as part of SAP Integration Suite
 - CPEA, Standard and Premium edition
 - SAP BTP Free Tier
- Supports SAP Process Orchestration v. 7.5 sp06
- [Roadmap](#): SAP Process Orchestration v. 7.4 and 7.31



BENEFITS

- Accelerated migration
- Lower cost and project risk
- Included in SAP Integration Suite at **no additional cost**
- Optional: Quick Start Migration Service (Q1 2023)

60-90% technical migration time savings for specific supported scenarios

Automate integration testing

Accelerate your migration to SAP Integration Suite **with SAP partner solutions**



Available on
SAP Store

“**Testing** is a substantial part of the migration effort and it consumes somewhere around **60% to 65% of the overall migration effort.**”¹

Gartner

PARTNERS



CAPABILITIES

- Automate regression testing of integration flows for migration & beyond
- Complement SAP's automated assessment & migration tooling
- Available on the SAP Store with **with free usage during SAP PI/PO migration to SAP Integration Suite up to 12-months**

BENEFITS



- **Faster** migration at a lower cost
- **Higher** testing accuracy
- **Reduced** burden on technical and functional teams
- **No** business disruption

¹Source:

Gartner®, [How to Successfully Migrate to a New Integration Platform](#), Abhishek Singh, October 2021

GARTNER is a registered trademark and service mark of Gartner, Inc. and/or its affiliates in the U.S. and internationally and is used herein with permission. All rights reserved.



Automated Integration Testing

Accelerate your migration from SAP Process Orchestration to SAP Integration Suite



ABOUT

- Headquarter: Zug, Switzerland
- Founded: 2011
- Leader in automated SAP integration testing
 - SAP Process Orchestration/Integration migration tools to SAP Integration Suite
 - Automated SAP API testing
 - Integration platform test automation
- Core team of SAP integration experts, SAP Press authors, and SAP Mentors



SAP® Certified
Integration with SAP S/4HANA®

CAPABILITIES

- Automatically create and execute test cases
- Automatically capture messages from productive landscapes using Int4 Robotic Crawler
- Simulating 3rd party systems and B2B partners with captured messages
- Validate message routing, mapping, and translation
- Audit test quality
- Scale to millions of test cases
- SAP certified ABAP add-on; whitelisted for SAP Private Cloud (SAP_BASIS & SAP_ABA 7.40; Fiori UI Optional SAP_UI 7.54 SP02 See [SAP Note 2796241](#))



Available on
SAP Store

[Get Int4's automated test tool for FREE today!](#)



BENEFITS

- Lower cost and risk of migration
- Increase the productivity of testing teams and cut dependency on functional teams
- Detect issues early in the migration process
- Minimize the risk of human error
- Create thousands of test cases in minutes
- Simplify conversion to new industry standards message formats

**Americas
Styrenics,
LLC**

40 Interfaces migrated from SAP Process Integration to SAP Integration Suite

Zero Post-go-live incidents or business interruptions with the SAP Integration Suite configuration



ABOUT

- Headquartered in Copenhagen, Denmark
- Founded in 2008
- Software solutions to automate and optimize development and testing with SAP integration solutions:
 - Regression test creation
 - DevOps focused transport tools (App Lifecycle Mgmt.)
 - Automated migration of SAP Process Orchestration /Integration (PI/PO) to SAP Integration Suite
 - Monitoring and alerting capabilities



Automated Integration Testing

Accelerate your migration from SAP Process Orchestration to SAP Integration Suite

Figaf Migration Edition

CAPABILITIES

- Automatically generate test scripts & creation of test data
- Advanced testing capabilities like
 - Mocking endpoints
 - Ensuring compliance with confidential data sets
- SAP PI/PO migration process management & automation
 - Complete migration status overview
 - Generate test data from SAP PI/PO & compare results
 - Migrate/test from SAP PI/PO 7.1 to 7.5
- Built on SAP BTP (Cloud Foundry)
- 12 months FREE usage of testing tools for migration purposes
- 2 months FREE trial of full DevOps Suite with migration tools
- Runs on customer SAP BTP or Desktop (Java JRE 8+; PostgreSQL 11+)



Available on
SAP Store



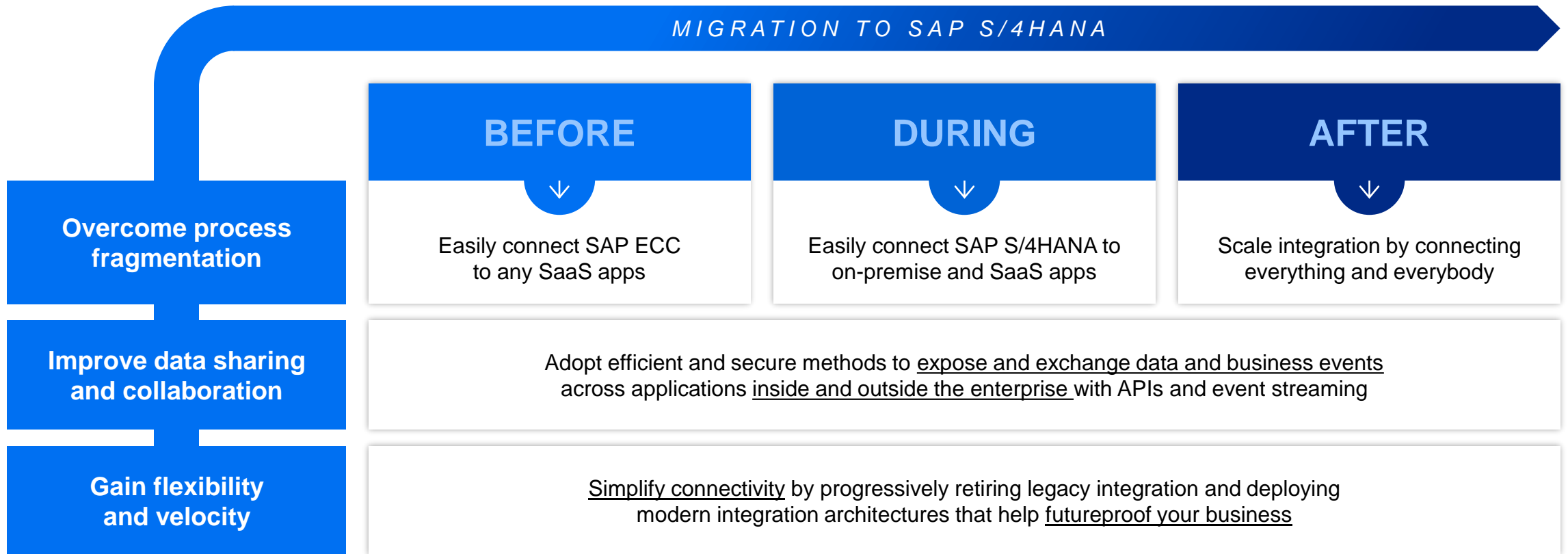
BENEFITS

- Deliver integrations faster & with less risk & cost
- Simplify integration & improve governance
- Improve developer & testing productivity
- Avoid interruption of business processes
- Simplify & reduced costs of migration from SAP PI/PO to SAP Integration Suite

[Get Figaf's free regression tool today!](#)

Migrating to S/4HANA: When to start using SAP Integration Suite?

Start now and gain value at every step of your transformation journey



Embrace cloud integration at your own pace

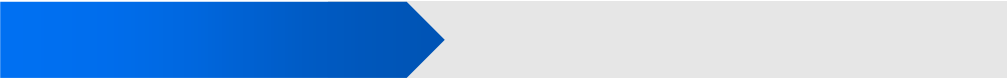
Preserving existing investments

Harrod's

60% Reuse of existing content in SAP Process
Orchestration Enterprise Services Repository



40% TCO reduction across
its integration landscape



[Customer Story](#)

[Video](#)



Phased migration

approach with services to support you every step of the way



Reuse skills

you developed with SAP Process Orchestration with SAP Integration Suite

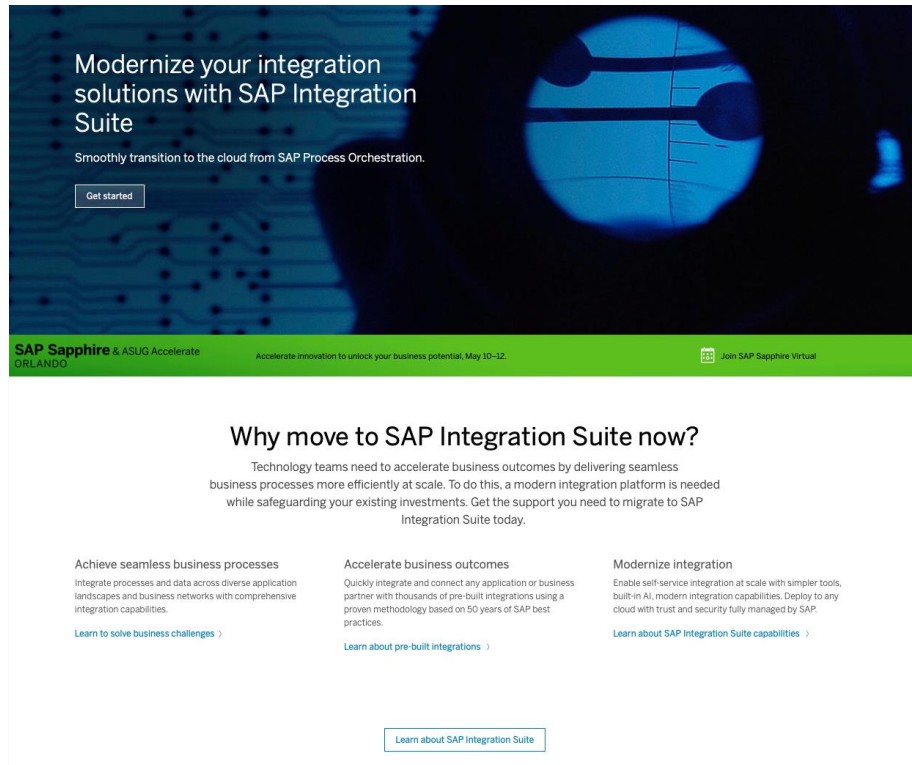


Flexible lifecycle

management model to support any tools and processes you already have in place today



Find out more



[Get support migrating to SAP Integration Suite](#)

Detailed self-service content and programs to support SAP Process Integration & Orchestration customers move to SAP Integration Suite

Learn about SAP Integration Suite

Check out the sap.com/integration website, which has valuable resources for fast-tracking your knowledge of SAP Integration Suite and to help you get the highest quality answers quickly and easily from SAP experts



Engage our community

<http://community.sap.com/topics/integration-suite>



Free tier

[SAP Business Technology Platform free tier](#)



Customers

[SAP Integration Suite customers](#)



Roadmap

[SAP Integration Suite roadmap](#)

SAP is here to help.

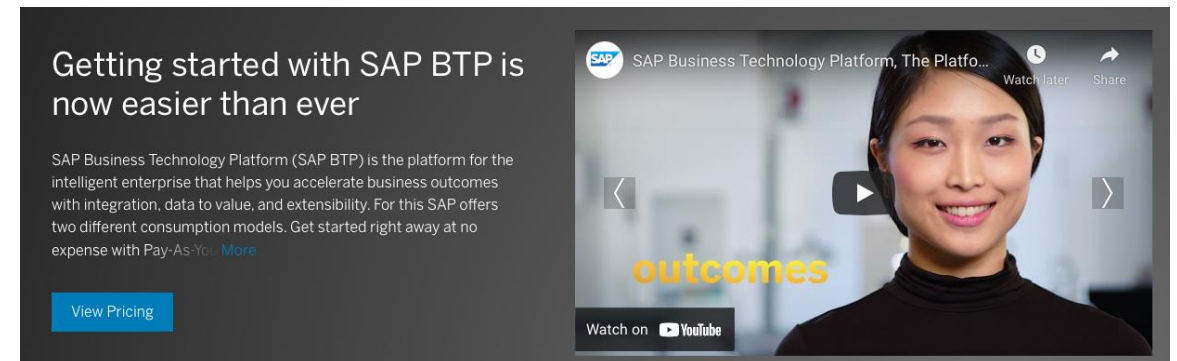
Contact your local SAP representative

sap.com/corporate/en/company/office-locations.html

Start now with the **free tier** service option

SAP Integration Suite is available on SAP BTP free tier

- 1 Experience SAP Integration Suite
[Sign up for SAP BTP free tier](#)
- 2 Extend your learning with the
[SAP Integration Suite learning journey](#)
- 3 Continue your learning with
[SAP Discovery Center Missions](#)



[Documentation](#) | [Blog](#) | [Tutorial](#) | [FAQ](#)

Thank You !

Abhijeet, SAP
5 October 2023

PUBLIC