

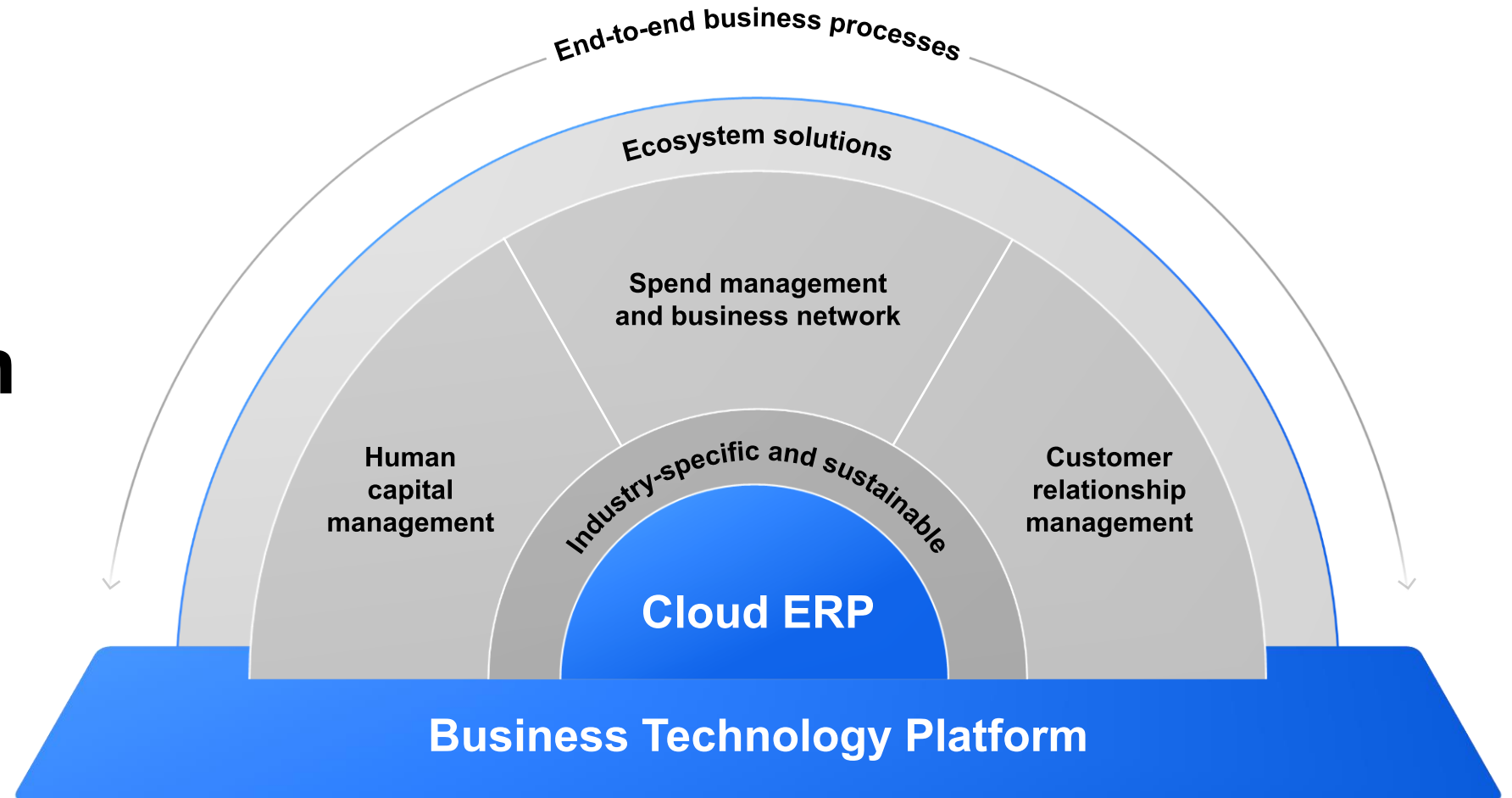


# The SAP BTP Universe in a Nutshell - Analytics

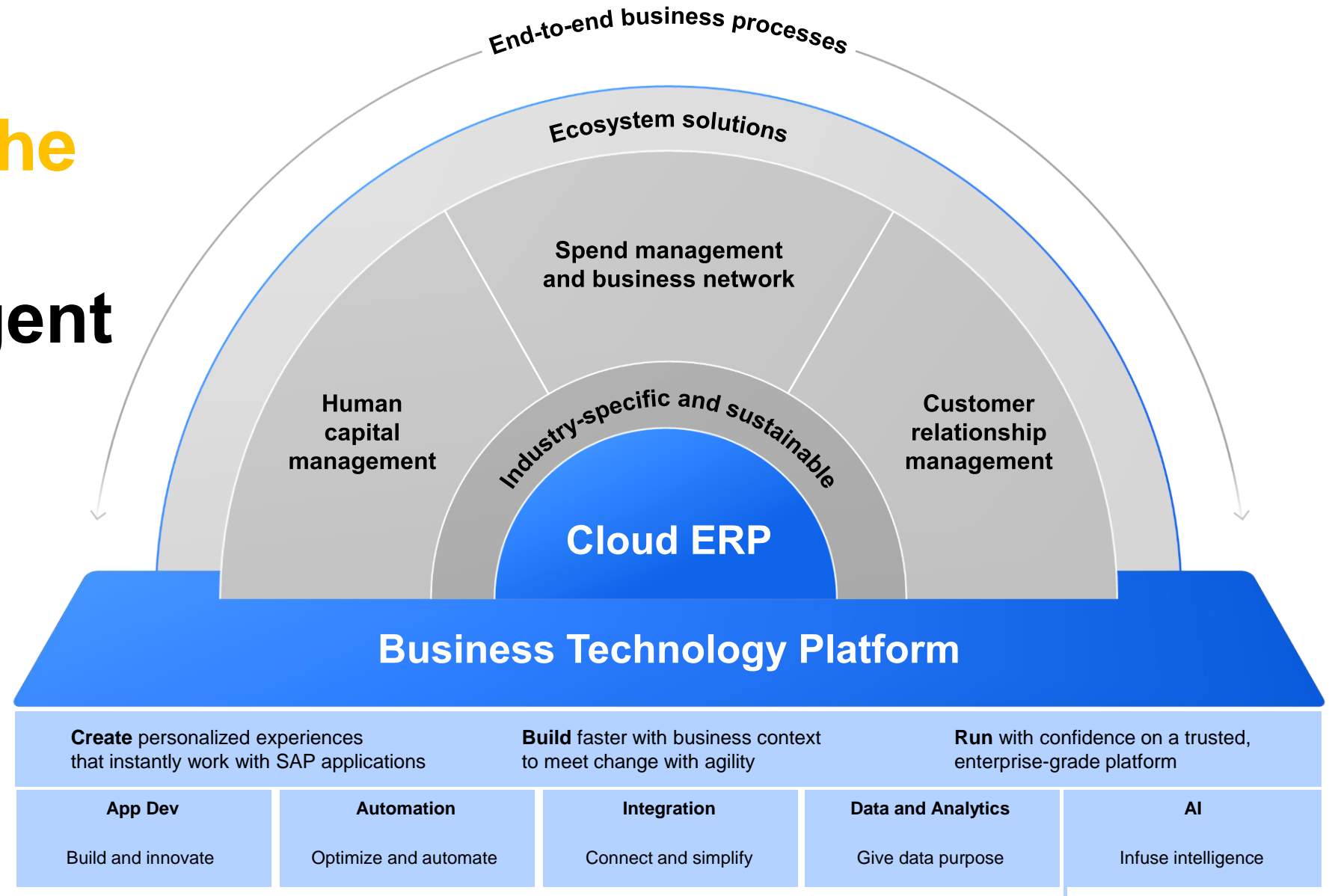
Orla Cullen, SAP

Public

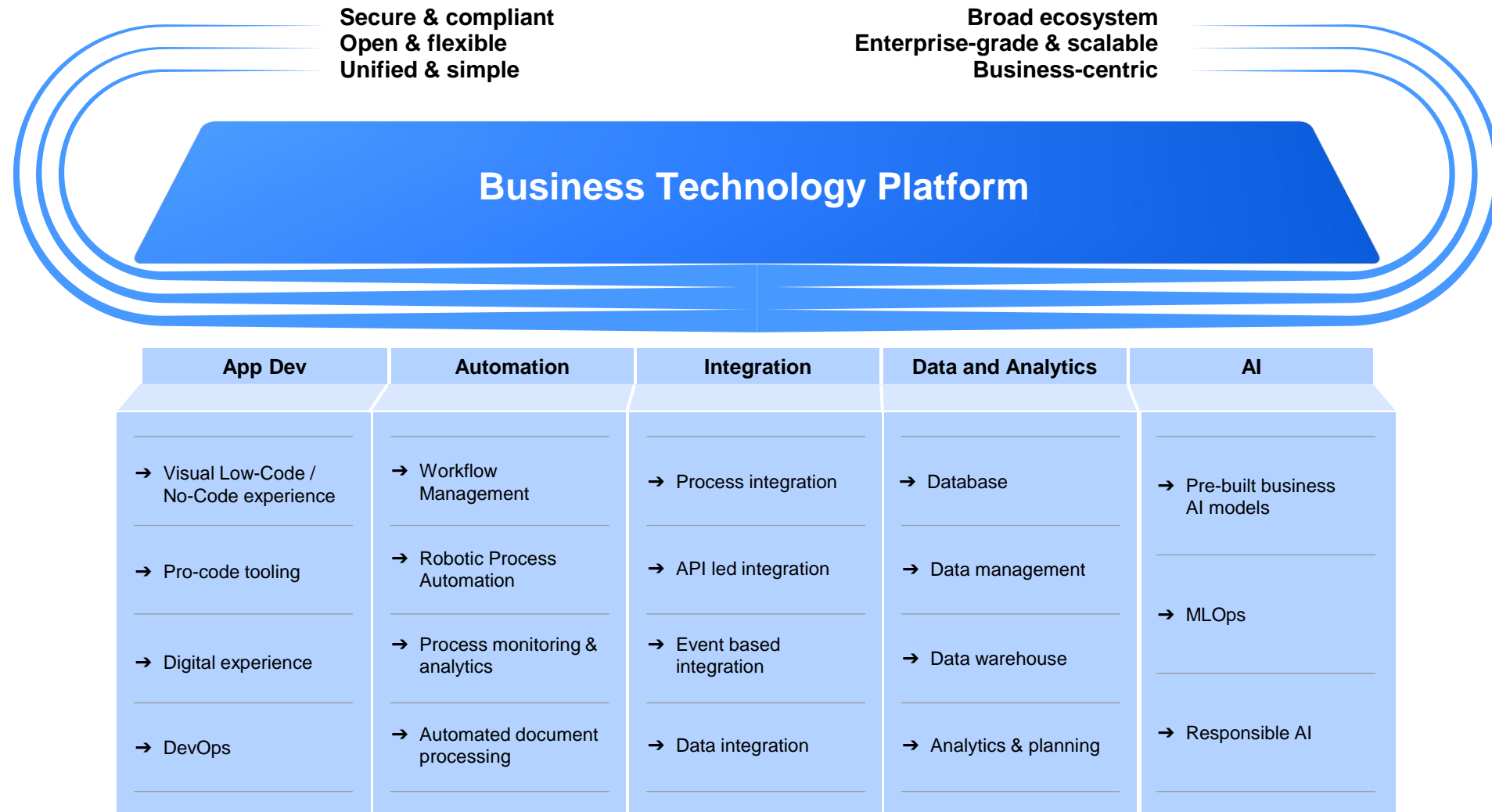
Enable every  
enterprise  
to become an  
**intelligent,  
sustainable  
enterprise**



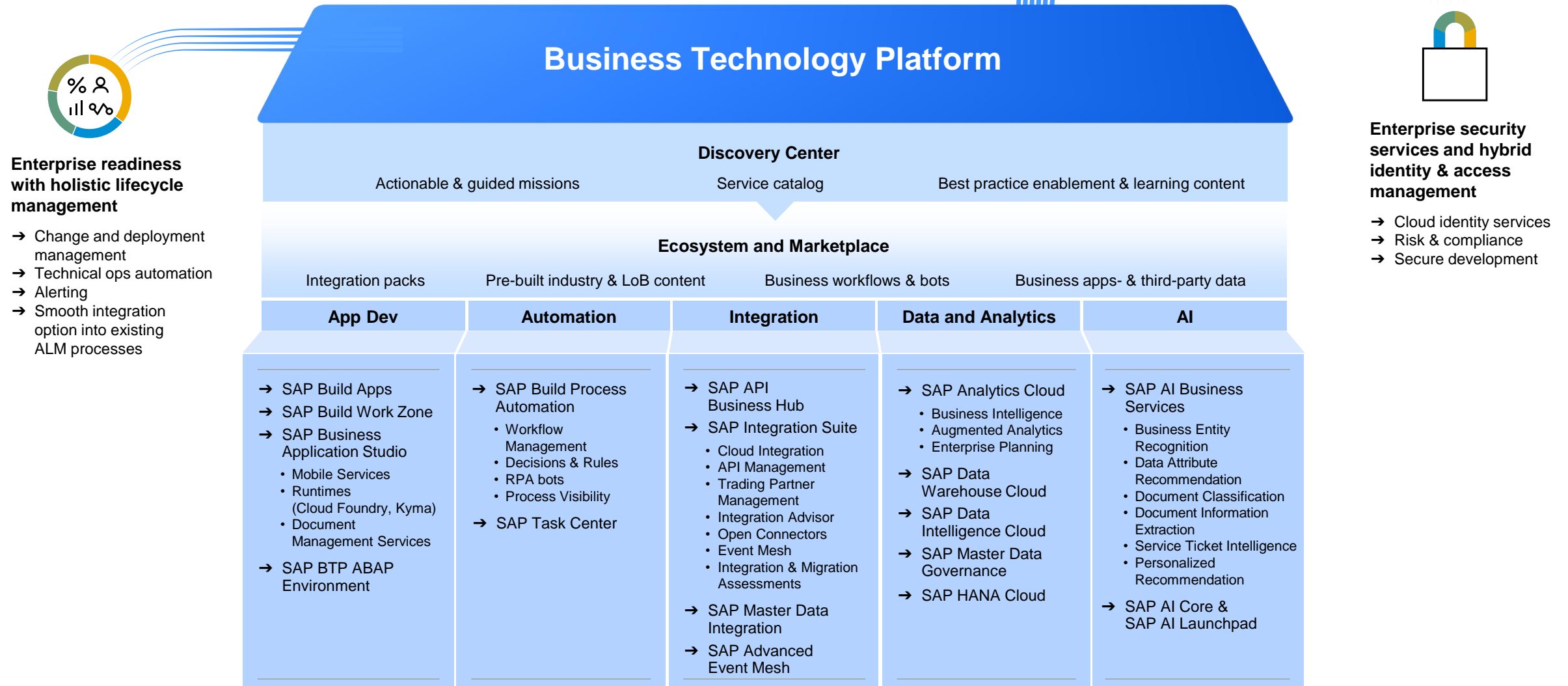
# SAP BTP is the foundation of the Intelligent Sustainable Enterprise

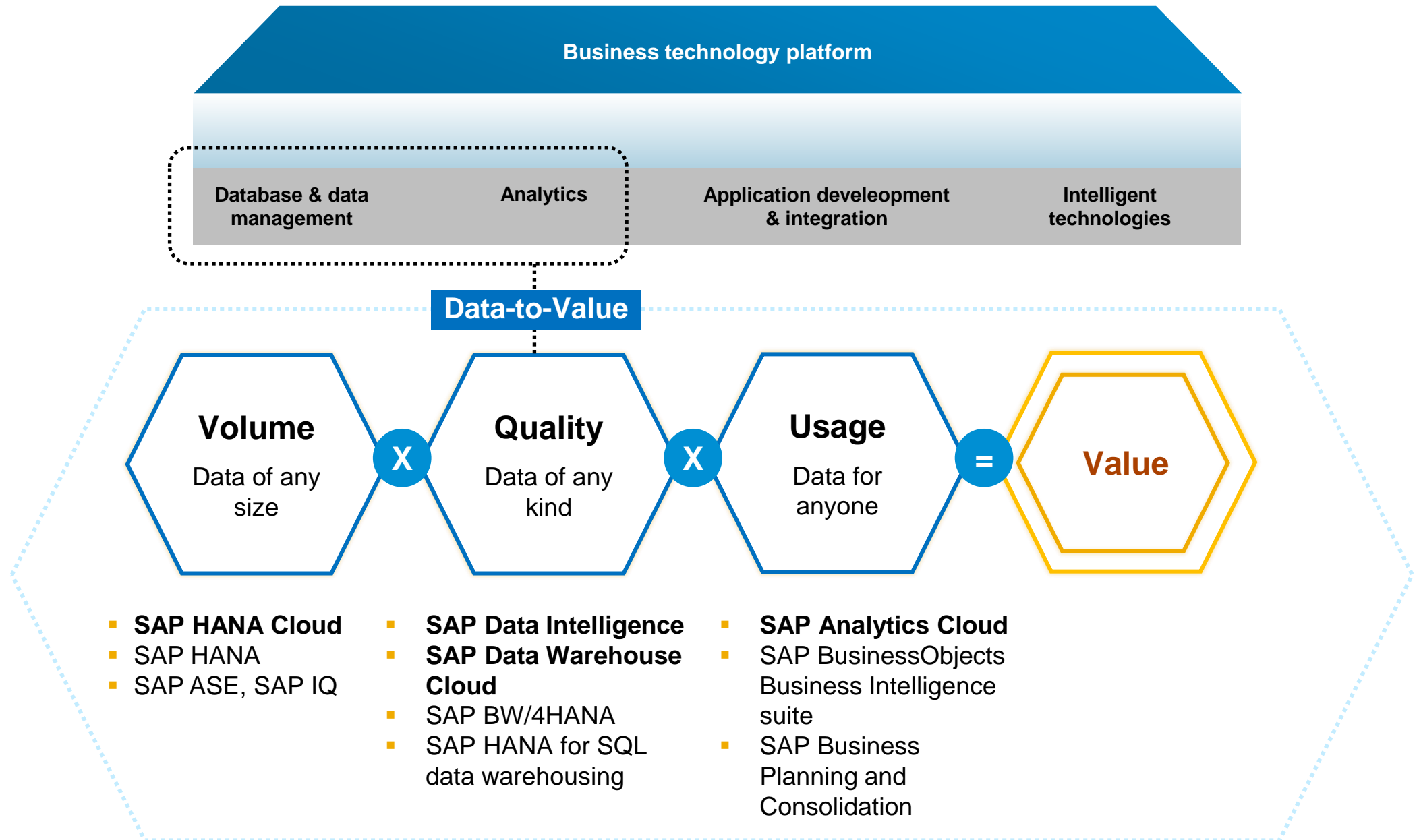


# SAP BTP Cloud Capabilities

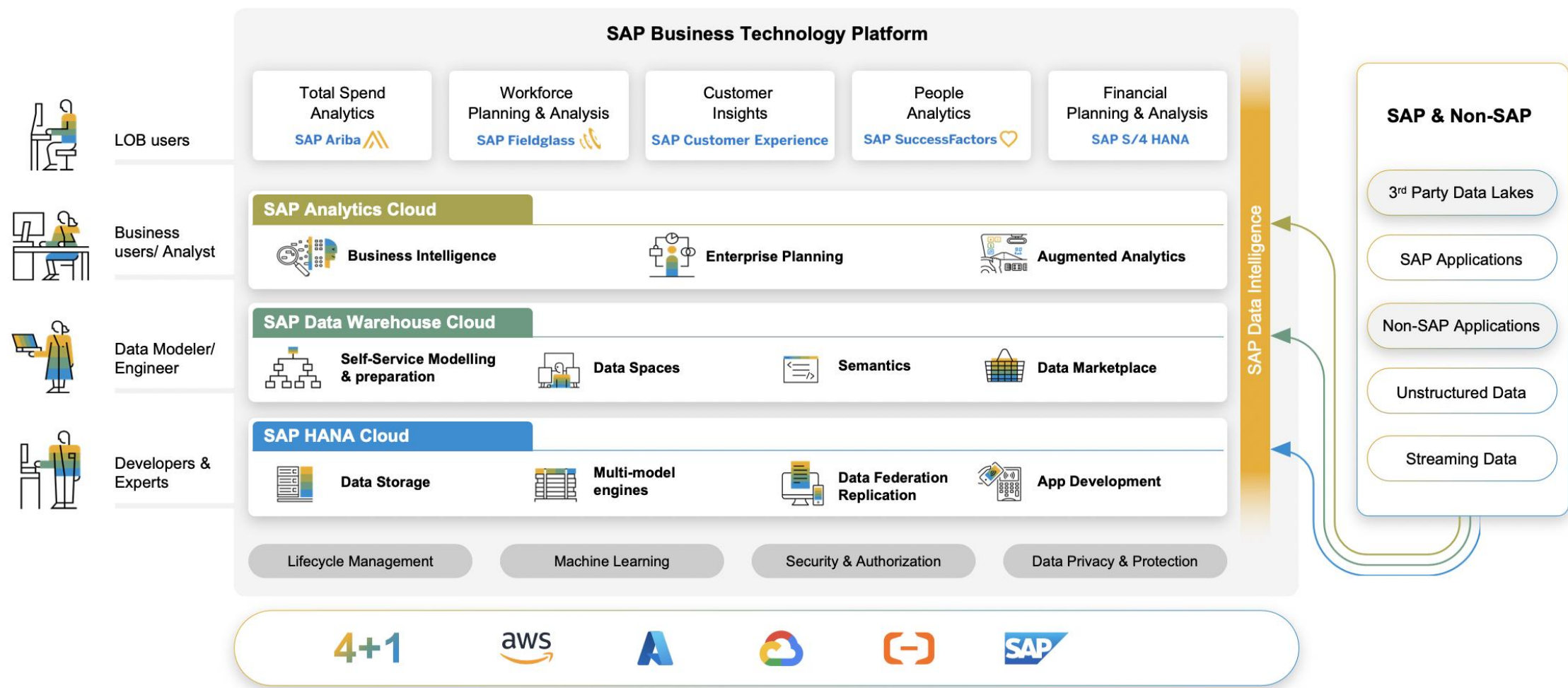


# SAP BTP Cloud Services



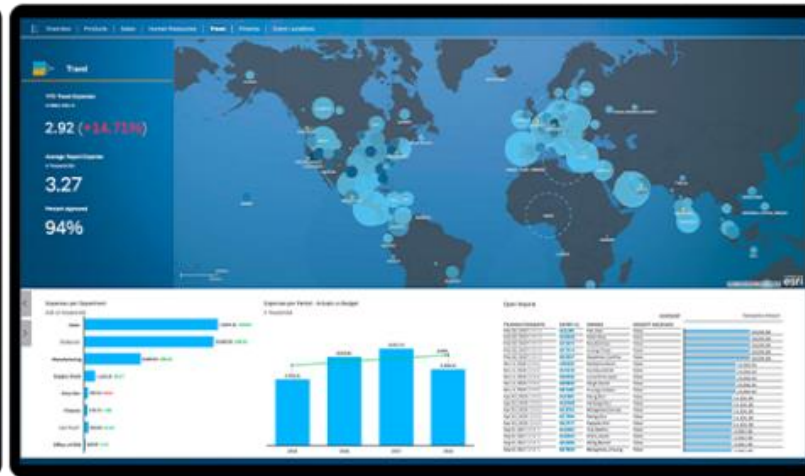


# Data and analytics solutions as foundational elements of SAP BTP





# SAP Analytics Cloud

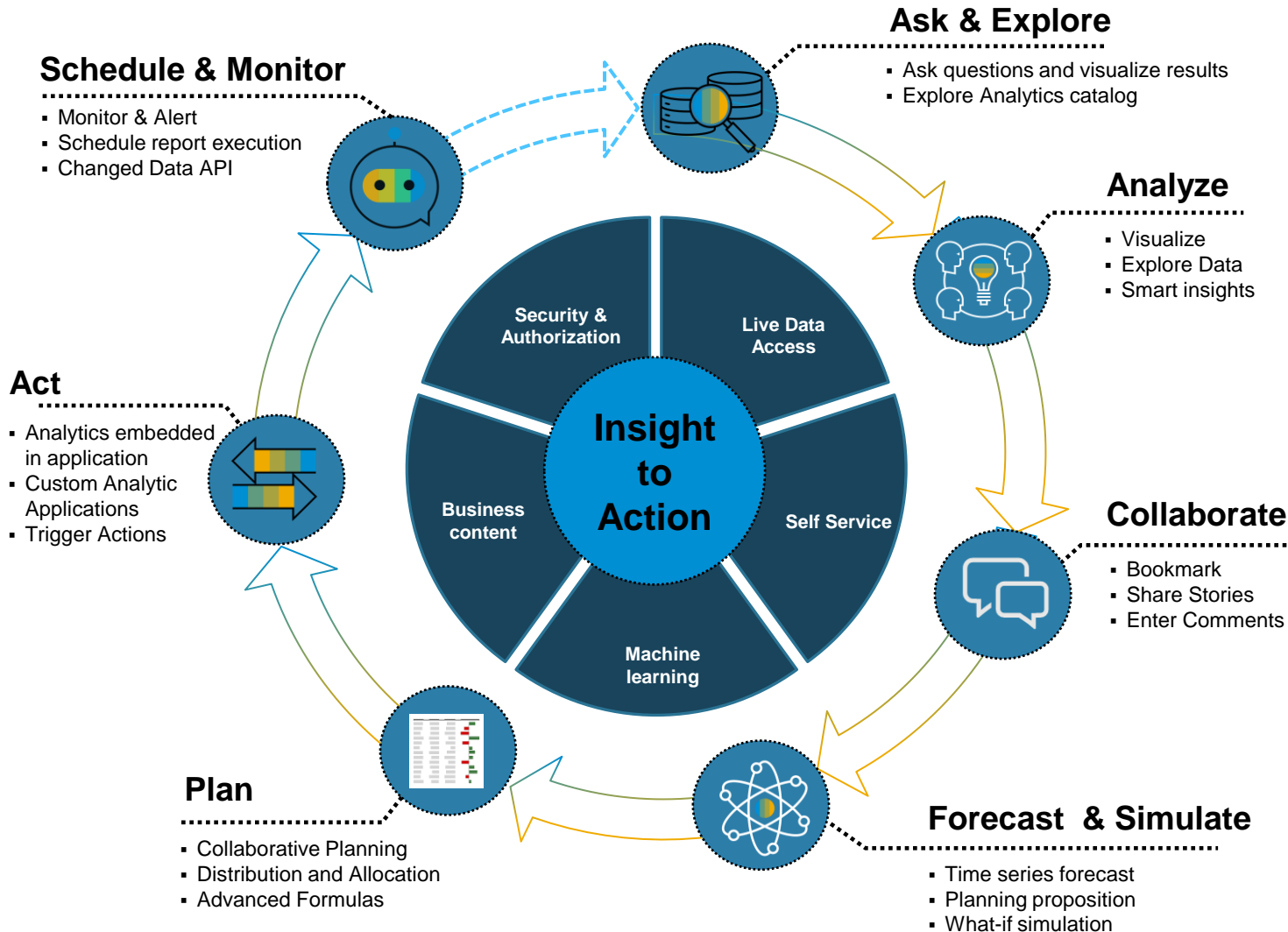


Decisions without Doubt



# Support closed-loop decision making

## SAP data and analytics solutions



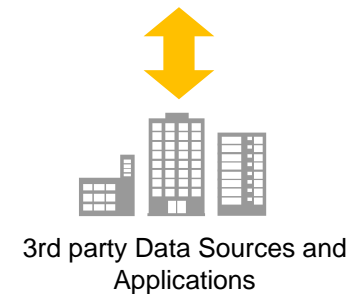
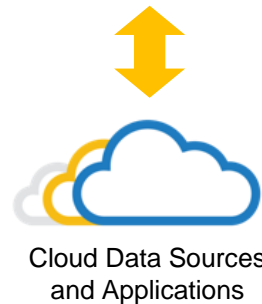
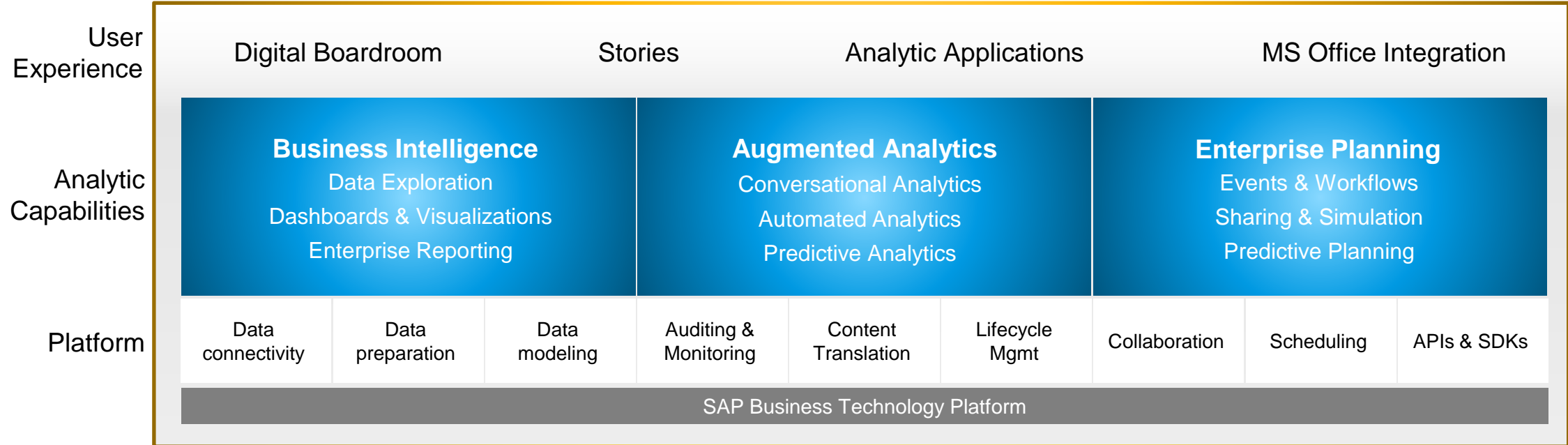
- Increase agility with analytics and planning in one solution
- Utilize the full context of real-time SAP data
- Deliver high-performance analytics at scale
- Automate insights with machine learning
- Quickly compose specialized analytic apps
- Deliver analytics closer to the point of decision
- Connect financial and operational plans seamlessly integrated with SAP applications

# SAP Analytics Cloud



SAP Analytics Catalog  
Centralized Portal

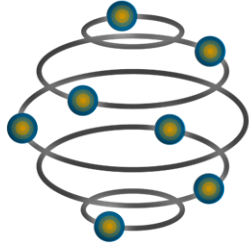
Mobile  
iOS & Android



# SAP ANALYTICS

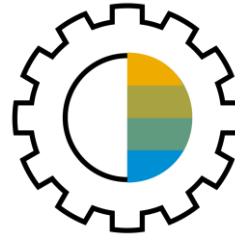
## Business Intelligence, Key Investment Areas

June 2022 [Statement of Direction](#)



### INTELLIGENT ENTERPRISE

Enhance the role of SAP Analytics Cloud in the Intelligent Enterprise through Embedded Analytics and connectivity to SAP Cloud Applications.



### ENTERPRISE READINESS

Focus on user productivity, time handling, performance and overall experience and interactivity for the users.



### AUGMENTED ANALYTICS

Enhance the richness of our automated insights, and prioritize support for live data sources

# Dashboards & Visualizations

## Design and deliver stunning, interactive enterprise dashboards across all lines of business

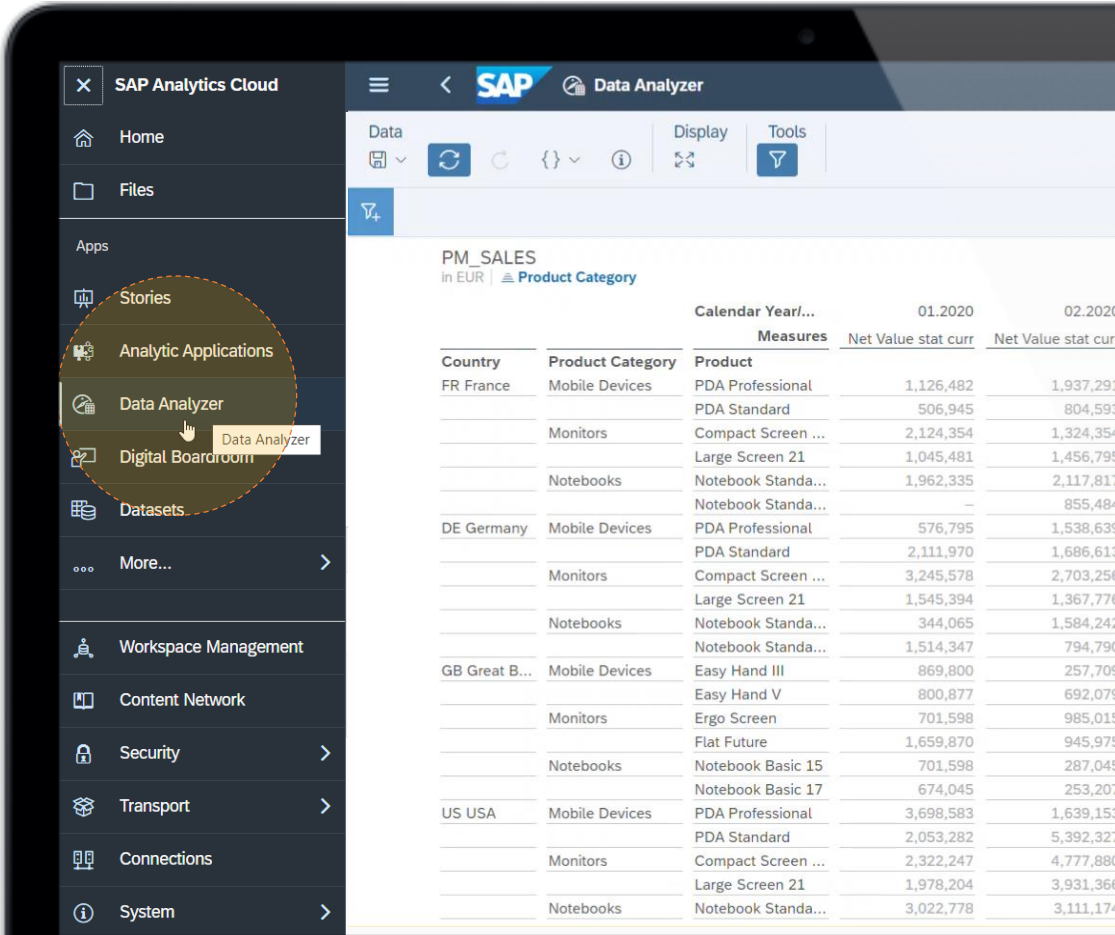
- Extensive visualization library, geo maps powered by ESRI and custom R visualizations
- Define custom calculations, calculated dimensions, aggregations and more
- Display variance, dynamic text, custom tooltips, CAGR and more
- Easily comment, collaborate and share content via document link with other users



# Data Analyzer

Query your data directly and perform ad-hoc analysis in a pivot-table style analysis view

- Supports SAP BW Live queries, SAP HANA Live views and SAP Analytics Cloud models
- Users can find a list of recent insights on the Data Analyzer start page
- Open an existing Insight or discover new insights by starting a new data exploration



The screenshot displays the SAP Analytics Cloud Data Analyzer interface. On the left, a sidebar menu lists various options: Home, Files, Apps, Stories, Analytic Applications, Data Analyzer (highlighted with a red circle), Digital Boardroom, Datasets, More..., Workspace Management, Content Network, Security, Transport, Connections, and System. The main area shows a pivot table titled 'PM\_SALES' with filters for 'In EUR' and 'Product Category'. The table displays sales data for three countries (FR France, DE Germany, GB Great B..., US USA) across different product categories (Mobile Devices, Monitors, Notebooks) and products (PDA Professional, PDA Standard, Compact Screen, Large Screen 21, Notebook Stand, Notebook Basic 15, Notebook Basic 17, Easy Hand III, Easy Hand V, Ergo Screen, Flat Future). The data is presented in a pivot table format with columns for 'Calendar Year/...' (01.2020, 02.2020) and 'Measures' (Net Value stat curr). A red circle highlights the 'Data Analyzer' option in the sidebar menu.

Country		Product Category	Product	Calendar Year/...	Measures
				01.2020	02.2020
				Net Value stat curr	Net Value stat curr
FR France	Mobile Devices	PDA Professional		1,126,482	1,937,293
		PDA Standard		506,945	804,593
		Compact Screen ...		2,124,354	1,324,354
	Monitors	Large Screen 21		1,045,481	1,456,795
	Notebooks	Notebook Stand...		1,962,335	2,117,817
		Notebook Stand...		-	855,484
DE Germany	Mobile Devices	PDA Professional		576,795	1,538,635
		PDA Standard		2,111,970	1,686,613
		Compact Screen ...		3,245,578	2,703,256
	Monitors	Large Screen 21		1,545,394	1,367,777
	Notebooks	Notebook Stand...		344,065	1,584,243
		Notebook Stand...		1,514,347	794,799
GB Great B...	Mobile Devices	Easy Hand III		869,800	257,705
		Easy Hand V		800,877	692,075
		Ergo Screen		701,598	985,015
	Monitors	Flat Future		1,659,870	945,975
	Notebooks	Notebook Basic 15		701,598	287,045
		Notebook Basic 17		674,045	253,207
US USA	Mobile Devices	PDA Professional		3,698,583	1,639,153
		PDA Standard		2,053,282	5,392,322
		Compact Screen ...		2,322,247	4,777,880
	Monitors	Large Screen 21		1,978,204	3,931,366
	Notebooks	Notebook Stand...		3,022,778	3,111,174

# Enterprise Reporting

Design reports and distribute to the workforce on-demand or scheduled

## Report Formatting

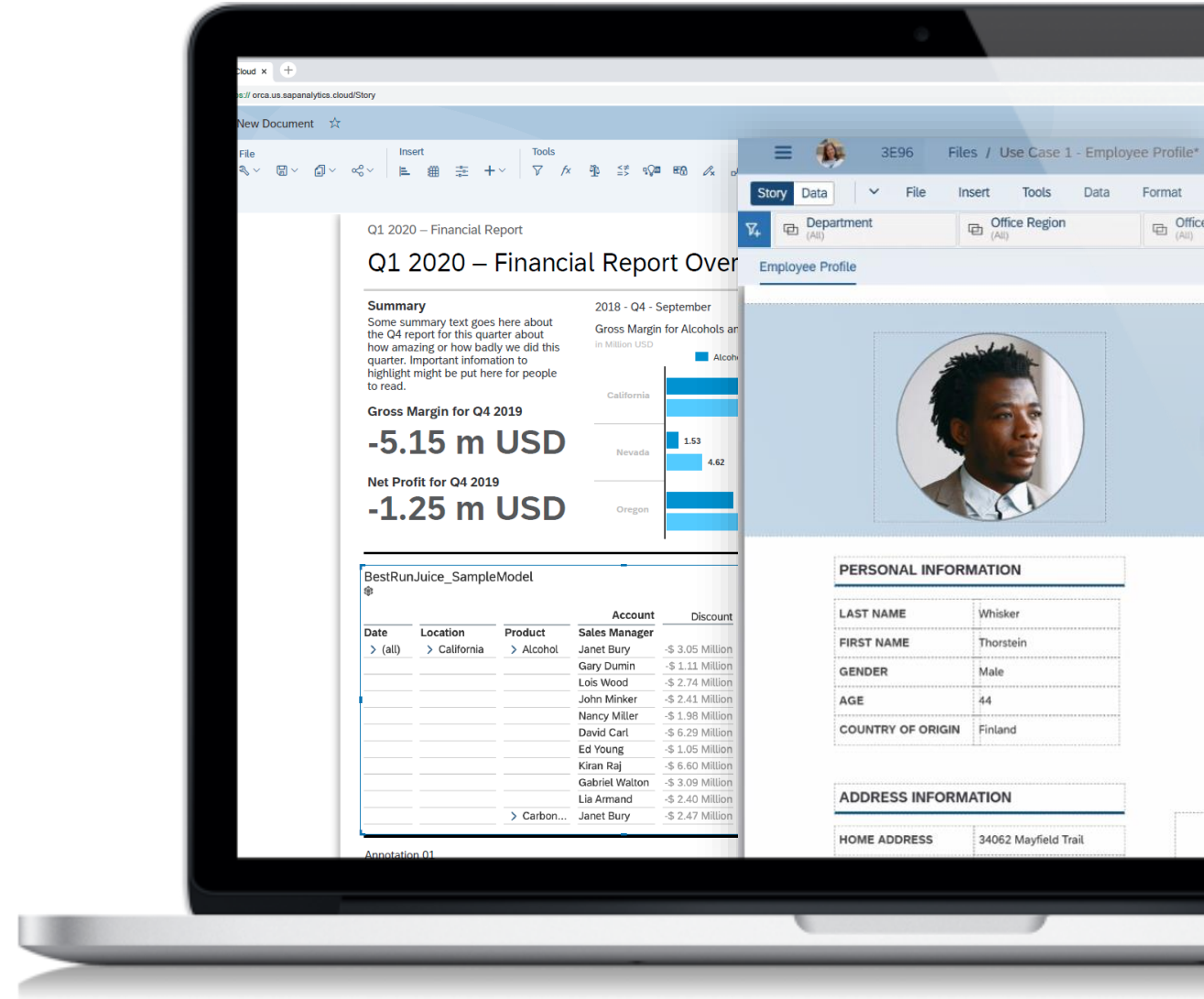
- Multi-page reports
- Dynamic label fields, relative positioning
- Report sections, headers and footers
- Paginated export to pdf and pptx

## Report Delivery

- Schedule and distribute reports to SAP Analytics Cloud and non-SAP Analytics Cloud recipients
- Burst personalized content to SAP Analytics Cloud recipients based on recipient authorization

## A modern architecture for reporting

- Easier maintenance by pushing some of the report semantics into the modelling layer (calculations, SAP Analytics Cloud public dimensions)
- Use new features such as KPI tiles, freeform input controls, CSS themes, data change insights, and commenting features

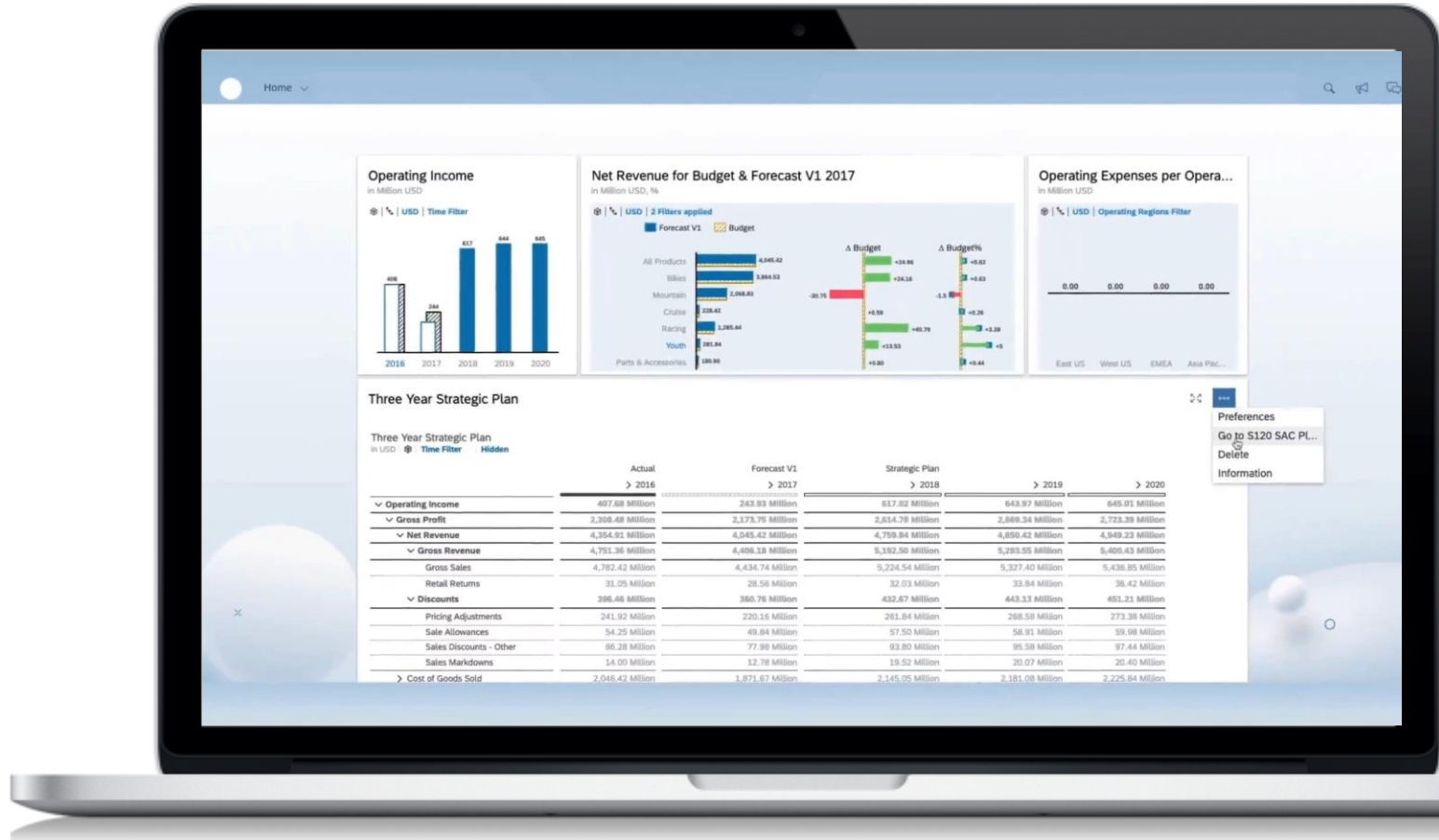




# What-If Analysis

Simulate “what-if” scenarios to test possible outcomes and make more confident decisions

- Perform what-if visually with widgets and value driver trees, or within a table
- Simulate from top to bottom or bottom to top
- Simulate questions like:
  - What if you increase discount by 20%?
  - What if you hire more staff?
  - What if costs of goods increased?



# Extended Planning & Analysis

## Remove barriers between Planning & Analysis

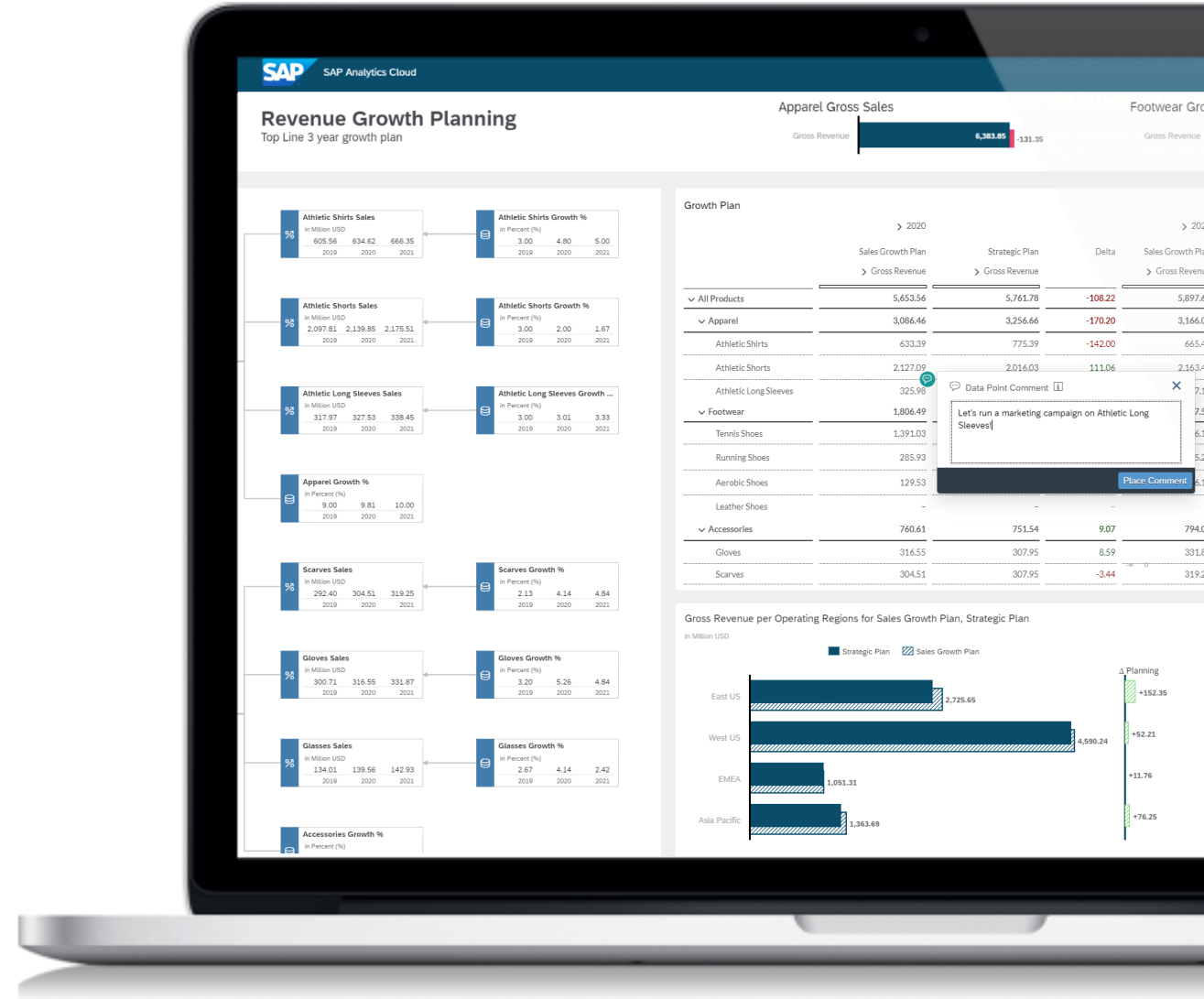
- Integrated BI, Planning, and Predictive
- Agile, streamlined planning and analysis with native collaboration & commenting

## Access powerful planning capabilities

- Customized data spreading, workflow & process management, unique versioning & simulation tools, and robust scenario analysis

## Deliver planning for an Intelligent Enterprise

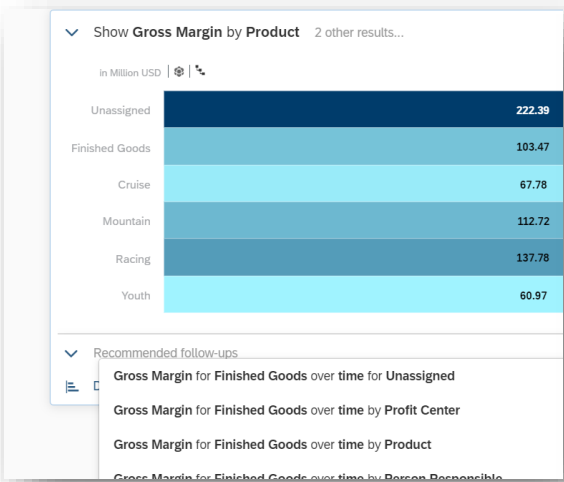
- Consolidate planning onto a single platform by leveraging best-in-class connectivity to SAP solutions, and pre-delivered Best Practice content to realize accelerated time-to-value



# Augmented Analytics for Everyone

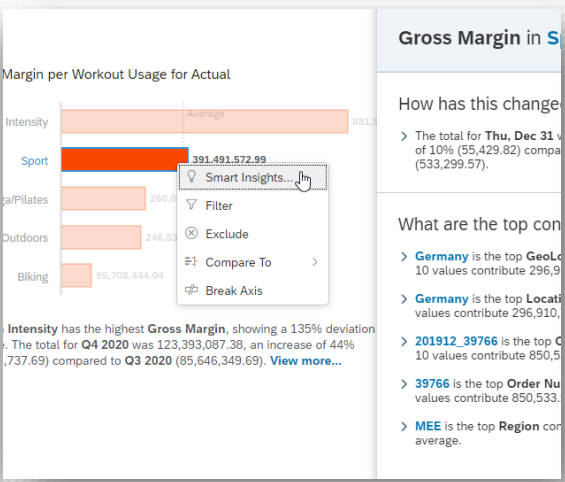
Make smarter and faster decisions with automated insights powered by machine learning

## Conversational



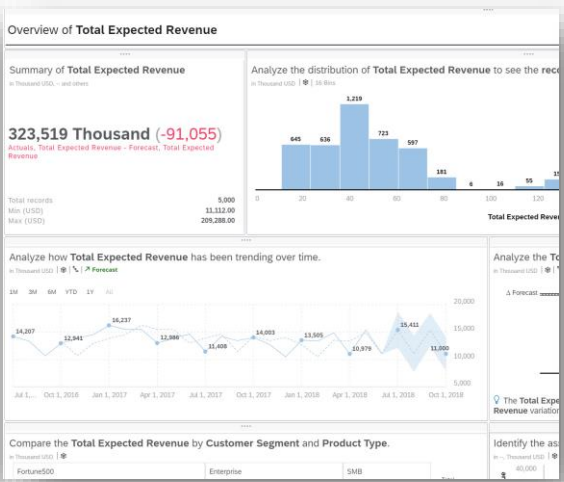
Ask questions conversationally and get answers visualized

## Automated Insights



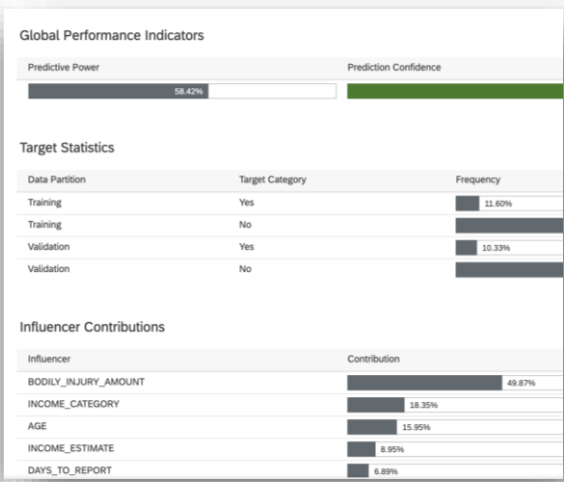
Automatically find top influencers in your data, explained in natural language

## Automated Discovery



Automatically generate stories that reveals trends, relationships, patterns, and outliers in your data

## Predictive Analytics



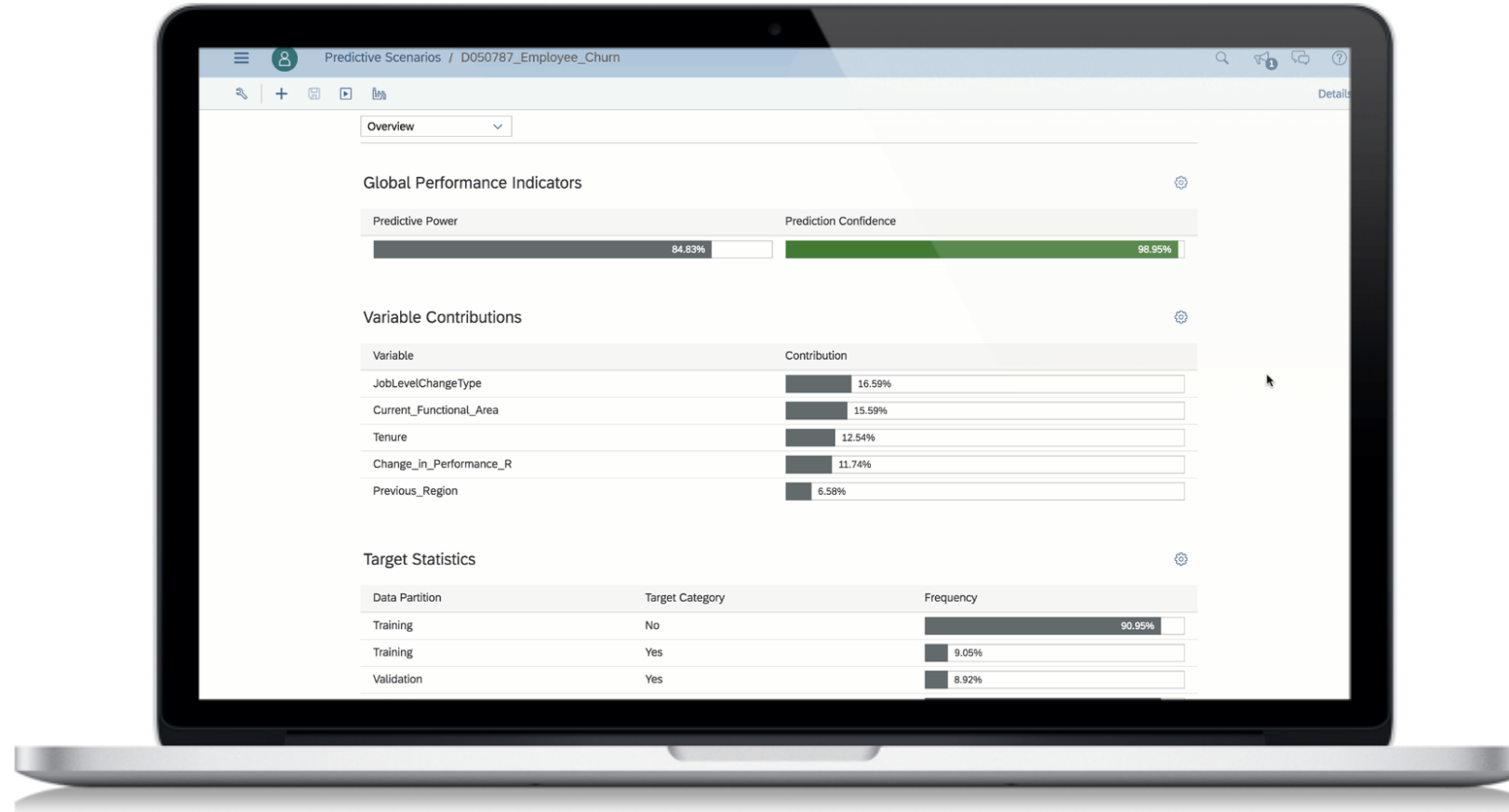
Run regression and classification scenarios, and generate forecasts without data scientists



# Smart Predict

## Build trusted and actionable predictions without the help of a data scientist

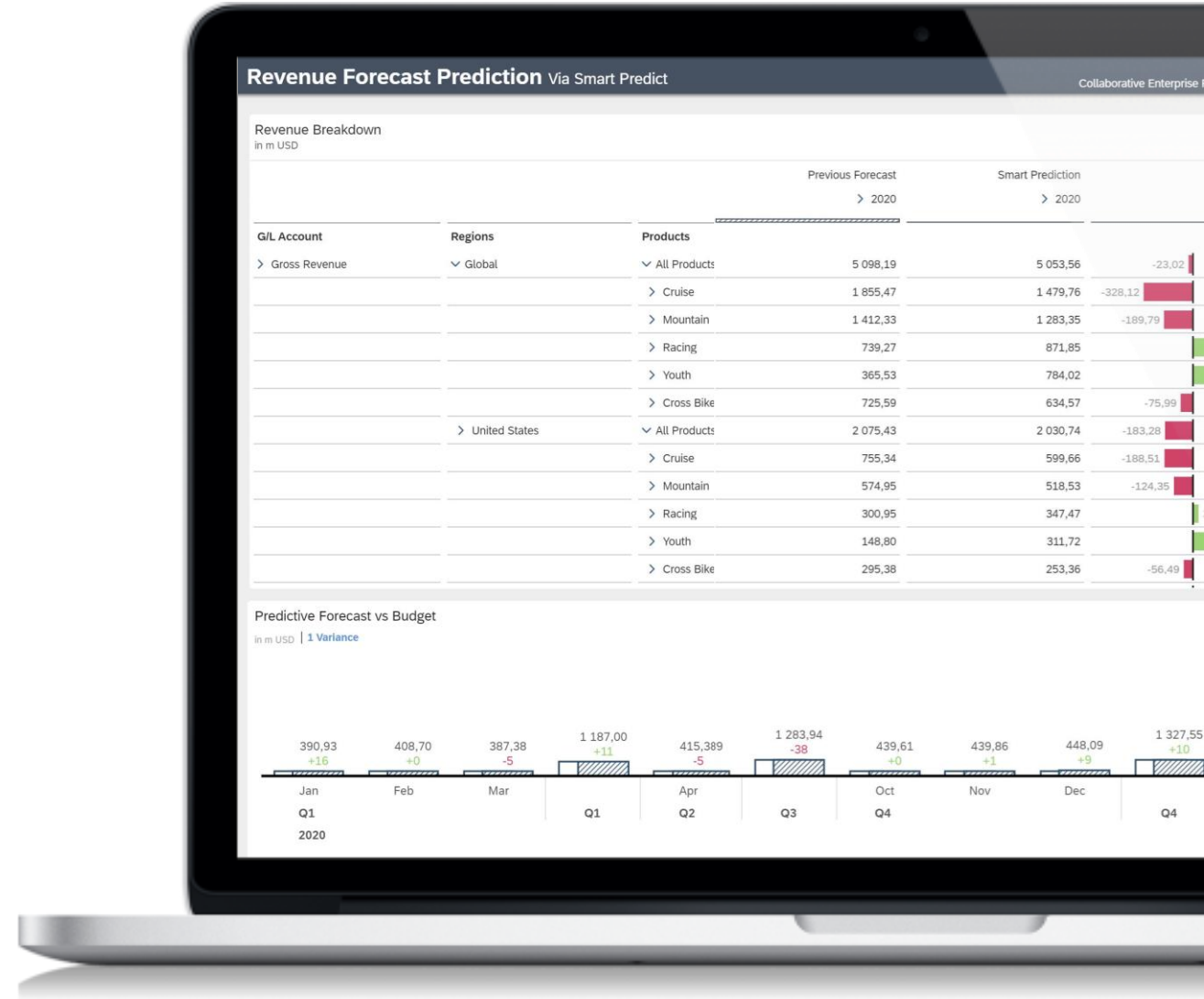
- Classification: "Create a sorted list of prospects to focus on for this product"
- Regression: "Give me revenue estimates for each customer for the next 6 months"
- Time Series: "Forecast revenue for each product and each point of sales daily for the next 30 days"



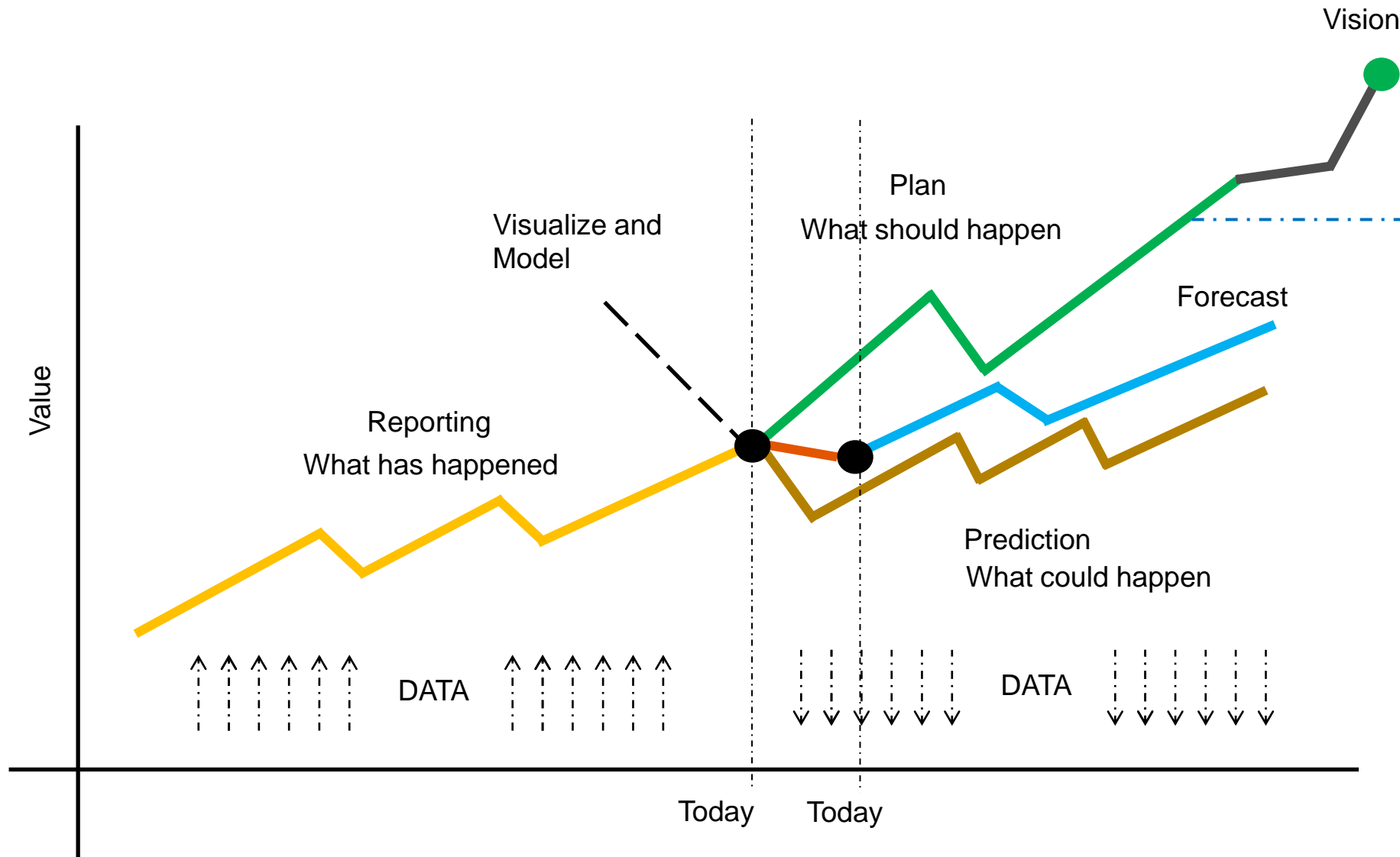
# Predictive Planning

## Combine the power of planning and predictive forecasting to accelerate planning cycles

- Planners generate accurate forecasts on top of actuals to accelerate their day-to-day planning activities
- Add predictive forecasts back to planning models to support data-driven business decisions
- All without the need for machine learning expertise



# BI, Predictive and Planning – Better Together







## F. Hoffmann–La Roche AG

Powering Predictive Financial Forecasts with SAP Analytics Cloud

**2**

**Hours** to generate a CHF 4 billion financial forecast vs **several weeks** involving 30 Finance resources

**7%**

**Improvement** in forecast accuracy using **predictive planning** vs manual process

**14k**

forecast **entry data points** now **automated** with SAP Analytics Cloud (out of 20k )

# Askdata integration into SAP Analytics Cloud

## H2 2023

### Targeting casual end user

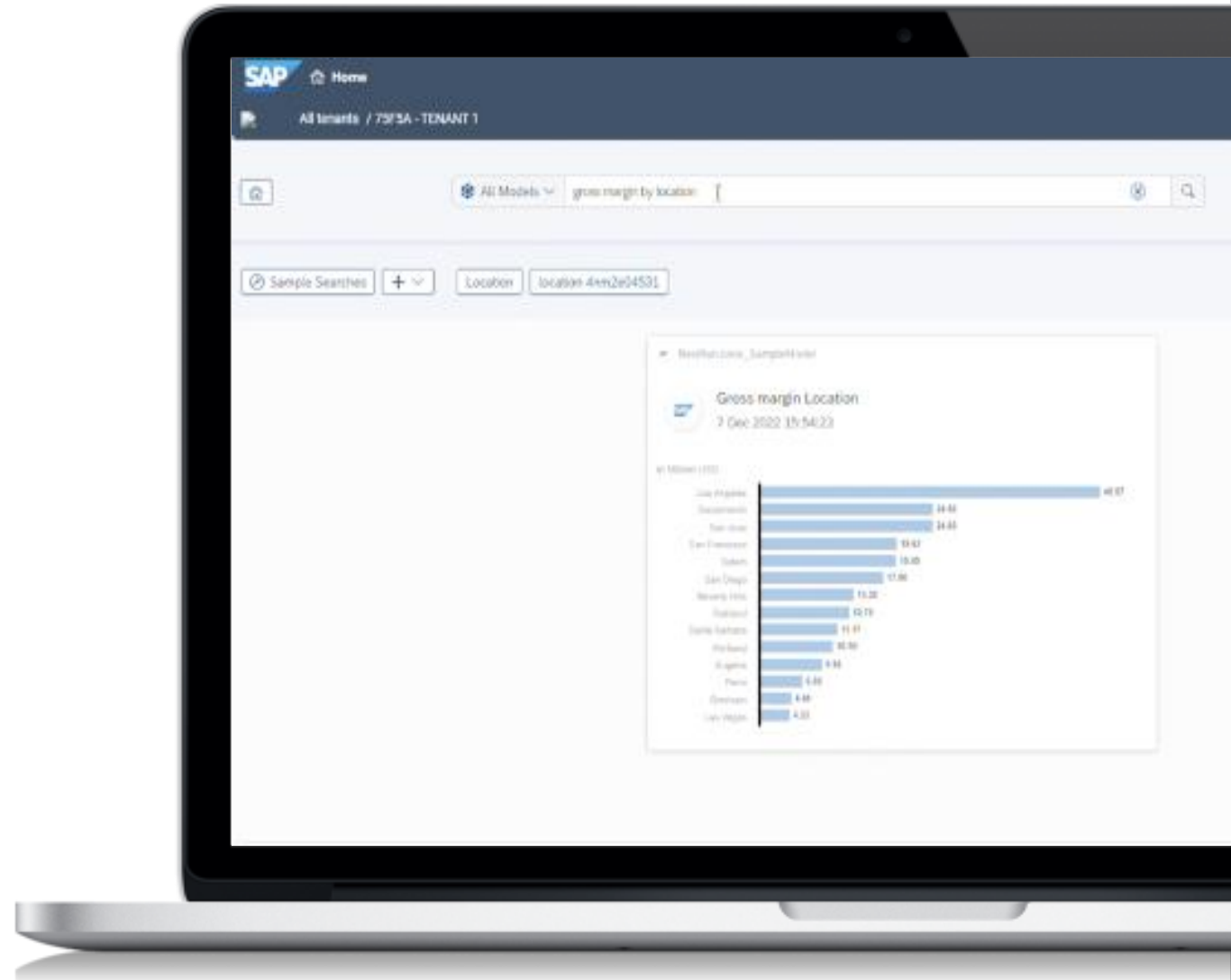
- Transformer based natural language query and generation improves language understanding
- Lightweight personalized feeds and watchlists
- Multi-language

### Integrated

- All data models both live and acquired
- Embedded in digital workspaces and enterprise applications
- Prebuilt content and synonyms

### Smart

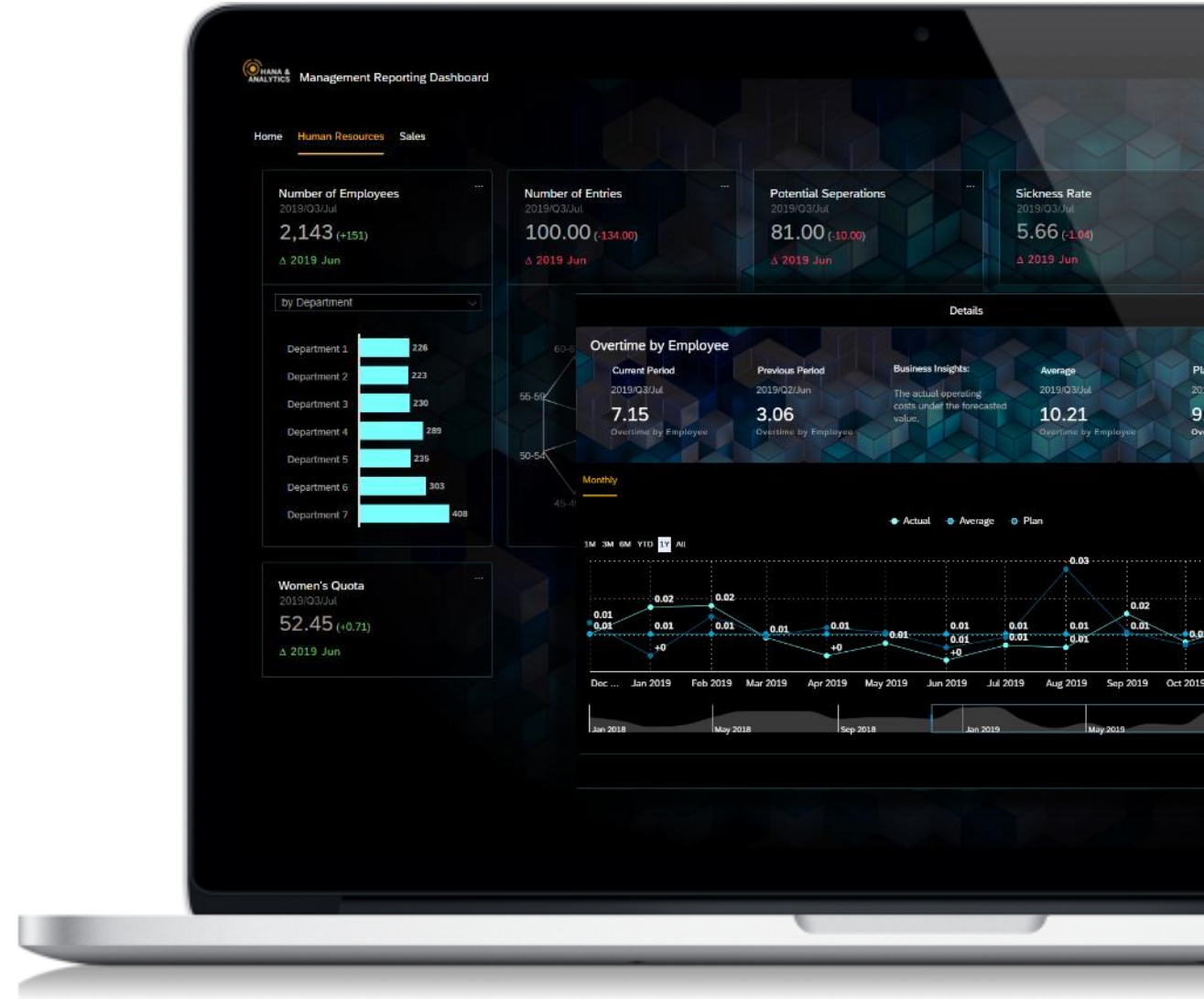
- Continuous learning
- Integrated with Smart Insights and Smart Discovery



# Analytic Applications

Fulfill unique and advanced use cases and workflows with analytic applications built with Analytics Designer

- Develop analytic applications that bring together Business Intelligence, Planning, and Predictive capabilities
- Start from existing content, reuse user stories widgets, customize, integrate and extend
- Guide the users and adjust the widgets behavior based on their expectations



# Optimized Story: story unification

## Design

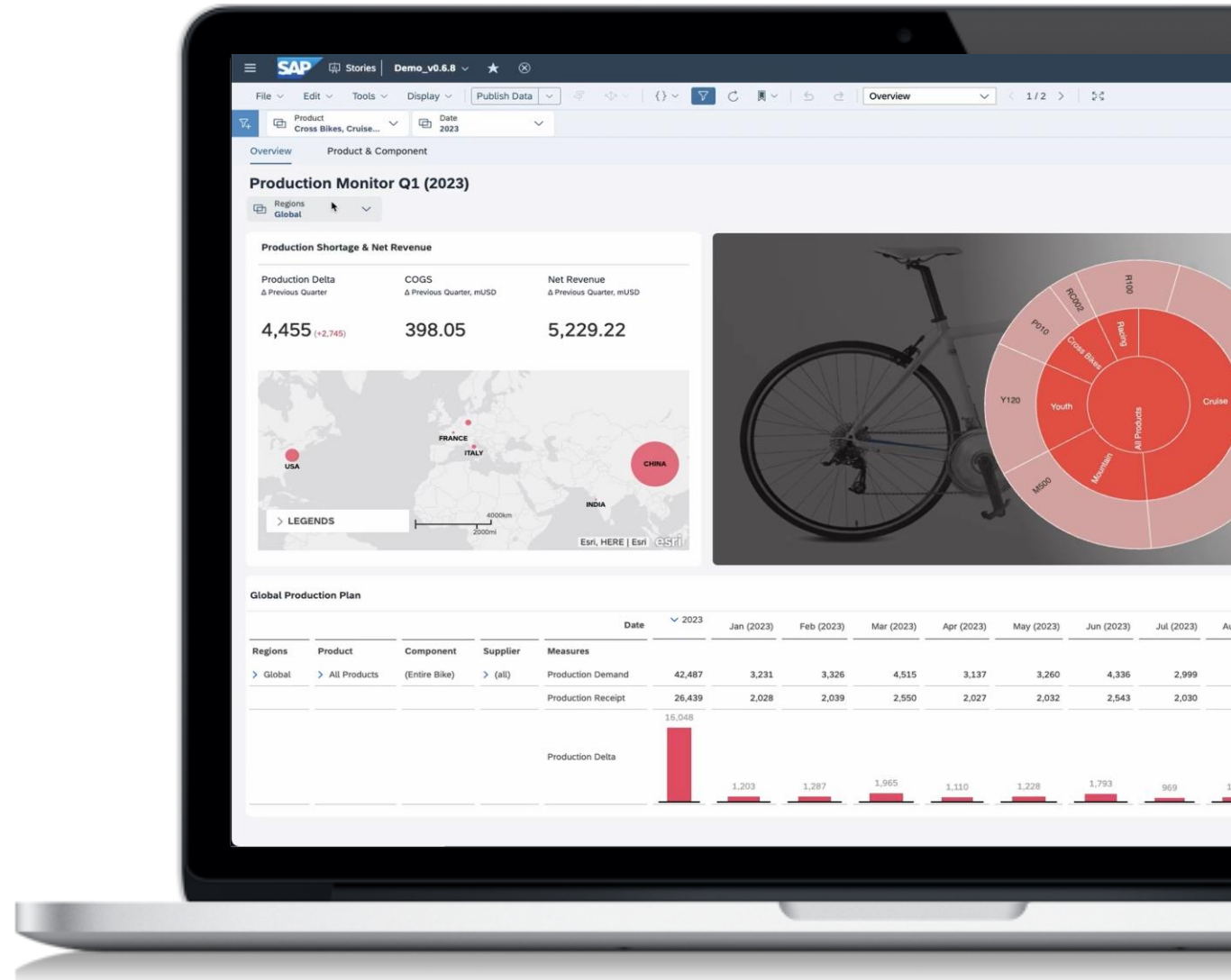
- Self-service story building
- Extends existing *optimized story* capabilities
- No-code features of analytic applications, such as custom widgets, theming

## Extend

- Smooth extension through scripting
- Low-code and advanced coding capabilities of analytic applications

## Present

- Ability to compose your presentation
- SAP Digital Boardroom concepts, such as navigation paths through story contents

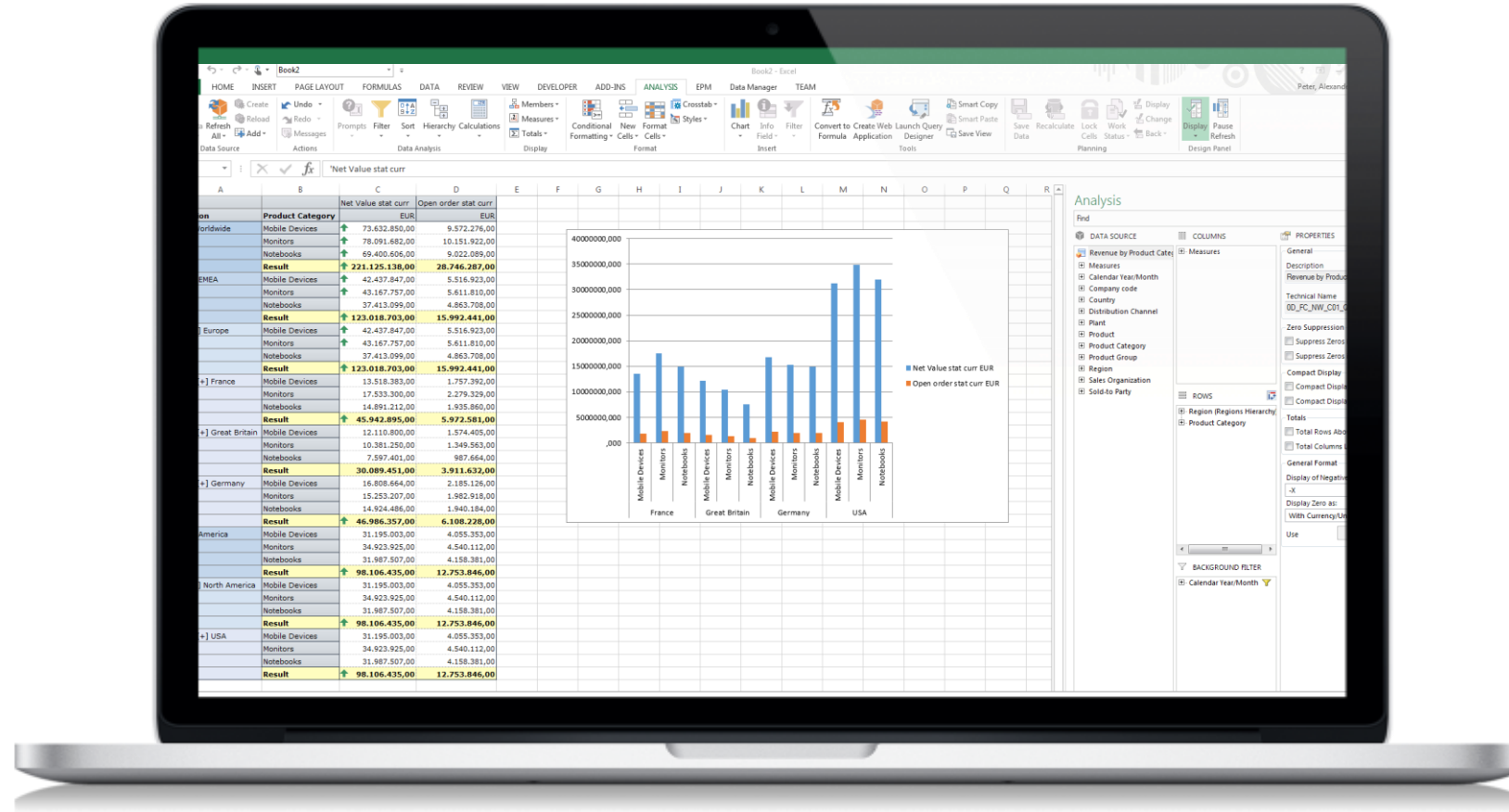




# SAP Analysis for Microsoft Office

**Leverage the familiar Excel interface with SAP Analytics Cloud for reporting and centralized planning**

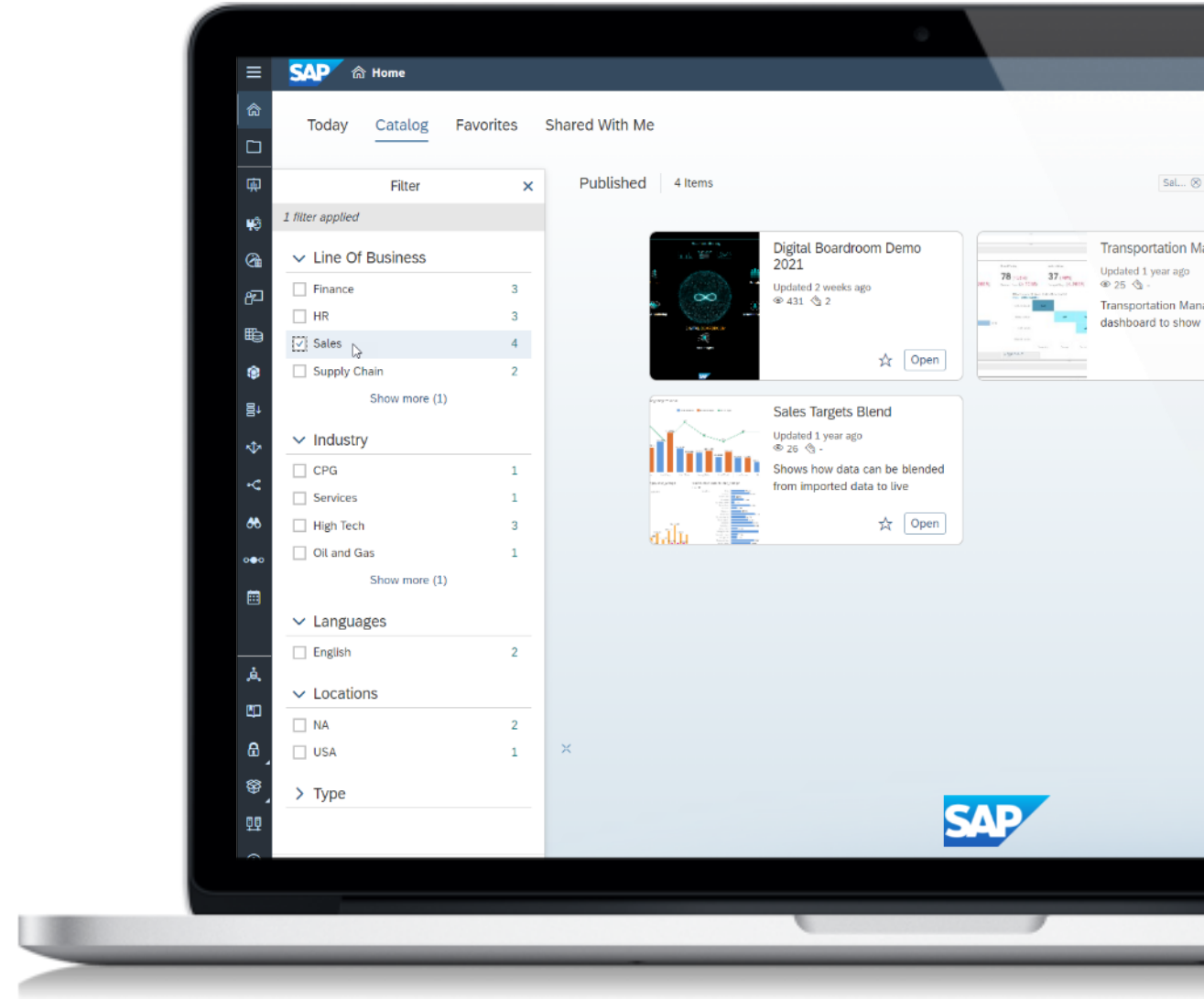
- Design formatted reports in Excel
- Analyze acquired data and live data from SAP BW, SAP BW/4HANA, SAP HANA, and SAP S/4HANA via SAP Analytics Cloud connections
- Available with SAP Analytics Cloud subscription



# SAP Analytics Catalog

**Increase productivity and raise user adoption of key analytics by simplifying access to analytics**

- Centralize access to all analytics across your organization
- All analytics including SAP, non-SAP, cloud or on-premise can be added to SAP Analytics Catalog
- Display analytics with consistent business & technical metadata
- Included in all SAP Analytics Cloud licenses

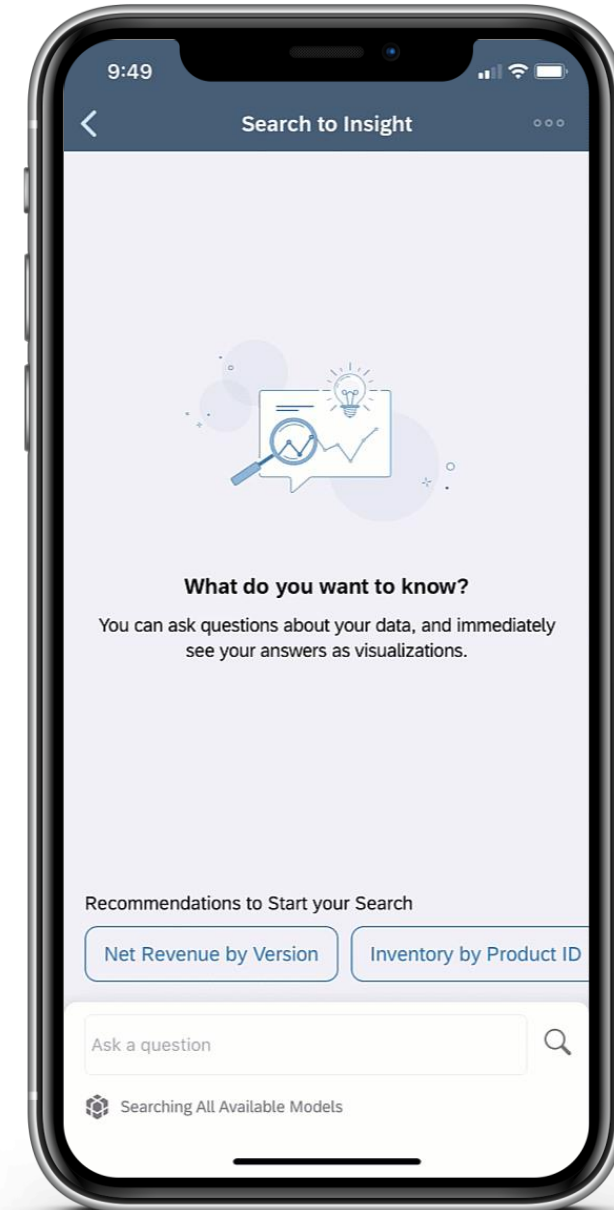




# SAP Analytics Cloud Mobile

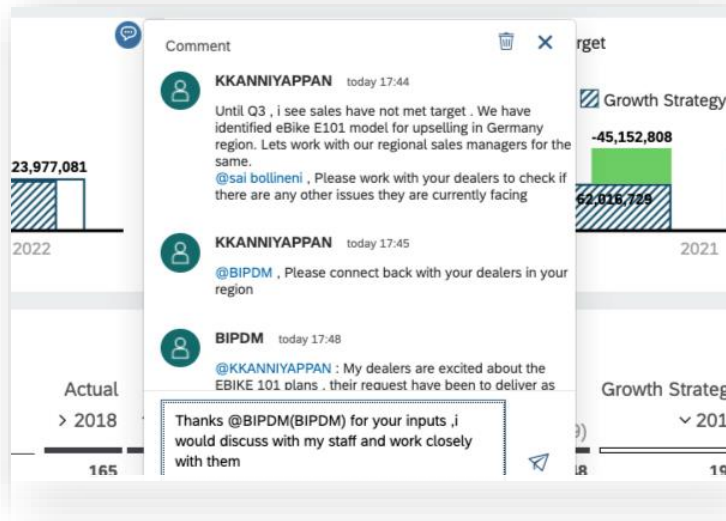
**Stay informed and connected to your analytics, any time, any place with SAP Analytics Cloud Mobile App**

- View your analytics from your iOS and Android devices
- Build stories with responsive layout and view from desktop or device
- Native mobile experience allows you to interact with your content intuitively and with ease
- Supports single-sign-on for easy access to analytics on mobile



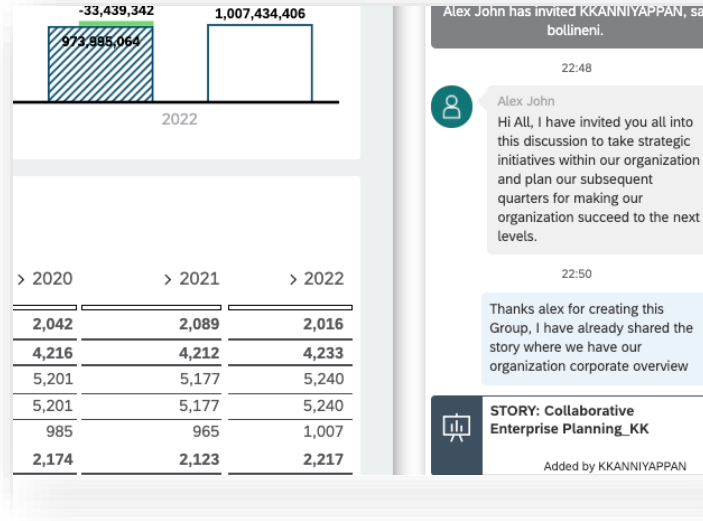
# Collaboration

Increase engagement, and accountability with built in collaboration capabilities



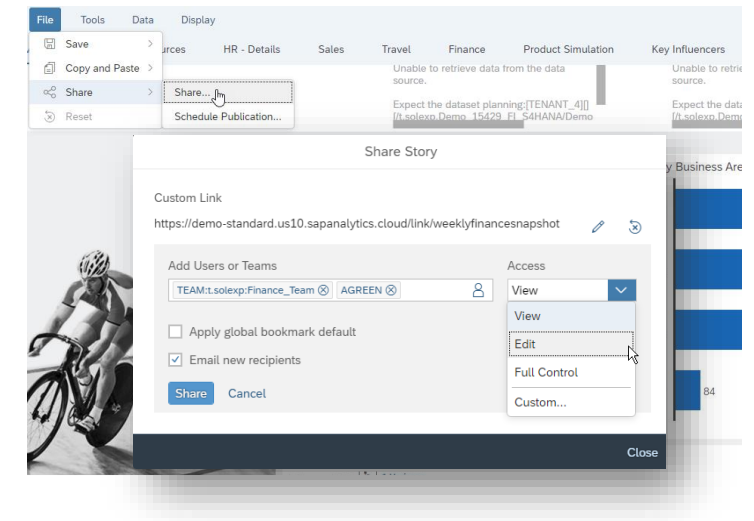
## Commenting

Comment on stories, applications and event specific data point table cells. Like, reply, address other users as @UserName



## Discussions

Start discussions on your analytics to collaborate with other SAP Analytics Cloud users and teams, on the desktop or on your mobile device.



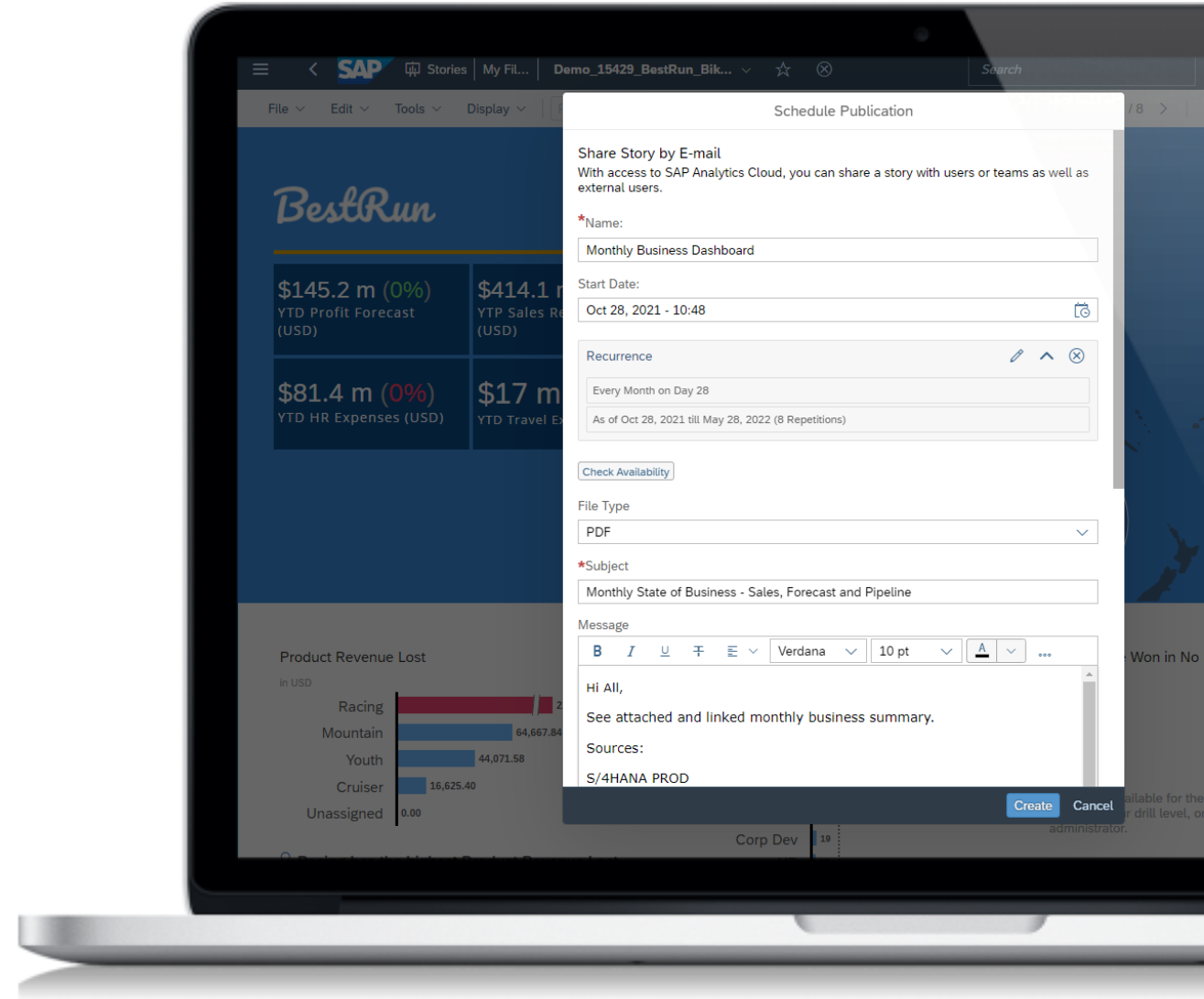
## Sharing

Easily share private or public stories and bookmarks to any SAP Analytics Cloud user or team via a customized link.

# Schedule Publications

## Streamline and optimize information delivery by scheduling delivery of analytics to users

- Schedule stories and analytic applications to SAP Analytics Cloud users, teams and SAP Analytics Cloud recipients
- Burst personalized content to SAP Analytics Cloud recipients based on recipient authorization (Q1 2022)
- Specify format (.pdf or .pptx), prompts, variables, bookmarks, and page range for schedules
- Manage schedules via calendar and configure custom SMTP server for delivery



# Analytics in the Intelligent Enterprise

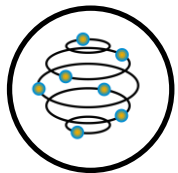
Unified view across all lines of business



**SuccessFactors**  
HCM Suite



**Customer Experience**  
aka CX



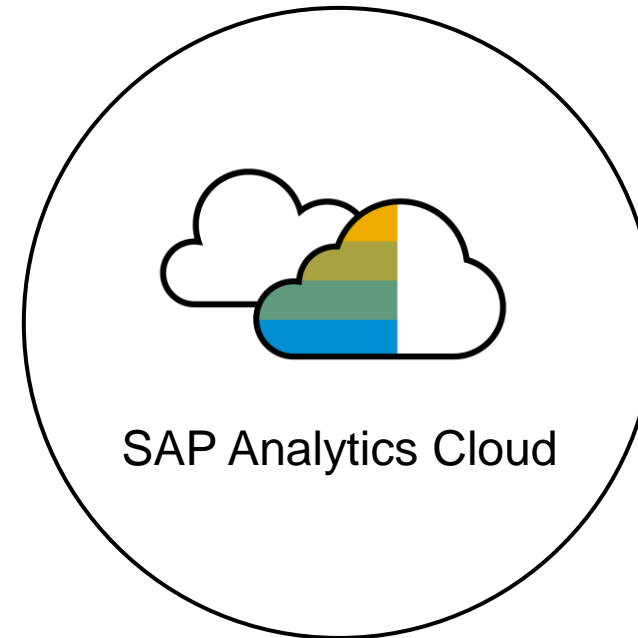
**S/4HANA**  
Cloud



**Spend**

SAP Analytics Cloud will be  
**embedded** in all SAP  
Cloud Applications

**Enterprise** Analytics provides rich cross-  
LOB analytics insights. Get started  
quickly with pre-built Business Content



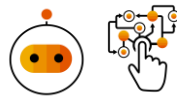
SAP Analytics Cloud is  
consumable **as a Business**  
**Technology Platform**  
Service

**SDK & APIs** Programmatically use  
APIs to embed, build, extend and  
lifecycle-manage Analytics

# What is Business Content on BTP?

SAP BTP Business Content are **pre-packaged objects/templates** encompassing **best practices** that can be deployed as part of a specific **SAP BTP service**, to **jump start** customer implementations

Initial Scope



SAP Process Automation  
(iRPA Bots, Workflows)



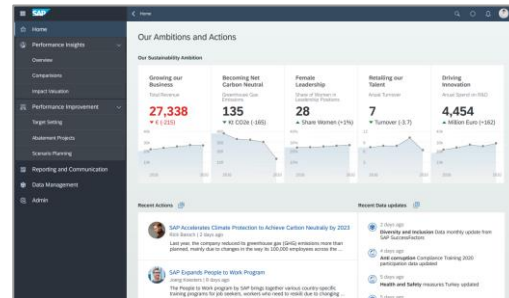
BI / Planning (SAC  
/ DWC) Templates



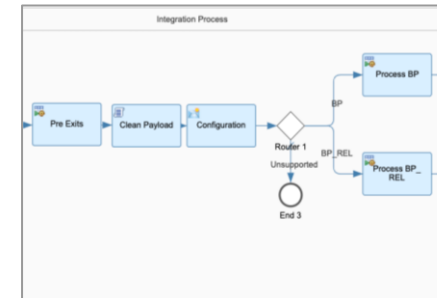
Integration Packs  
(e.g. iFlows)

	A	B	I	J	K	L
Cost Center Input in USD						
			Plan-201707	Plan-201708	Plan-201709	Plan-201710
Financials (DE)						184
* Operating Expense			106,532	-	67,500	
> Building Expense			-	-	4,551	105
> Depreciation & ...			-	-	9,860	12
> Employee-relat...			106,532	-	27,303	34
> Other Operatin...			-	-	25,787	32
Purch & Store 1 (DE)			9,685	-	-	-
> Operating Expense			9,685	-	-	-
> Building Expense			-	-	-	-
> Other Operatin...			9,685	-	-	-
R&D (DE)			183	-	-	-
> Operating Expense			183	-	-	-
> Other Operatin...			183	-	-	-

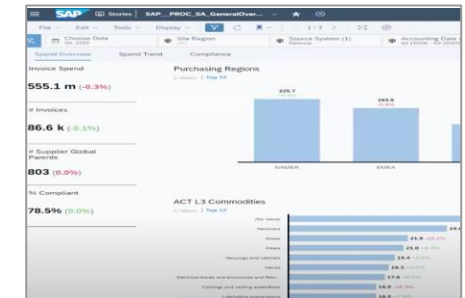
Integrated Financial  
Planning



Sustainability  
Control Tower



S/4HANA to CX  
Integration



Spend Analysis

*E.g., Financial Planning & Analysis takes **6 Months** to deliver when started from scratch as compared to **2-4 Weeks** when using business content – **6X accelerated time to value***

More Info: [SAP Business Content Blog](#) | [SAP API Business Hub](#) | [SAP Analytics Content](#) | [SAP iRPA Store](#)

# Content Packages for Industry and Line of Business

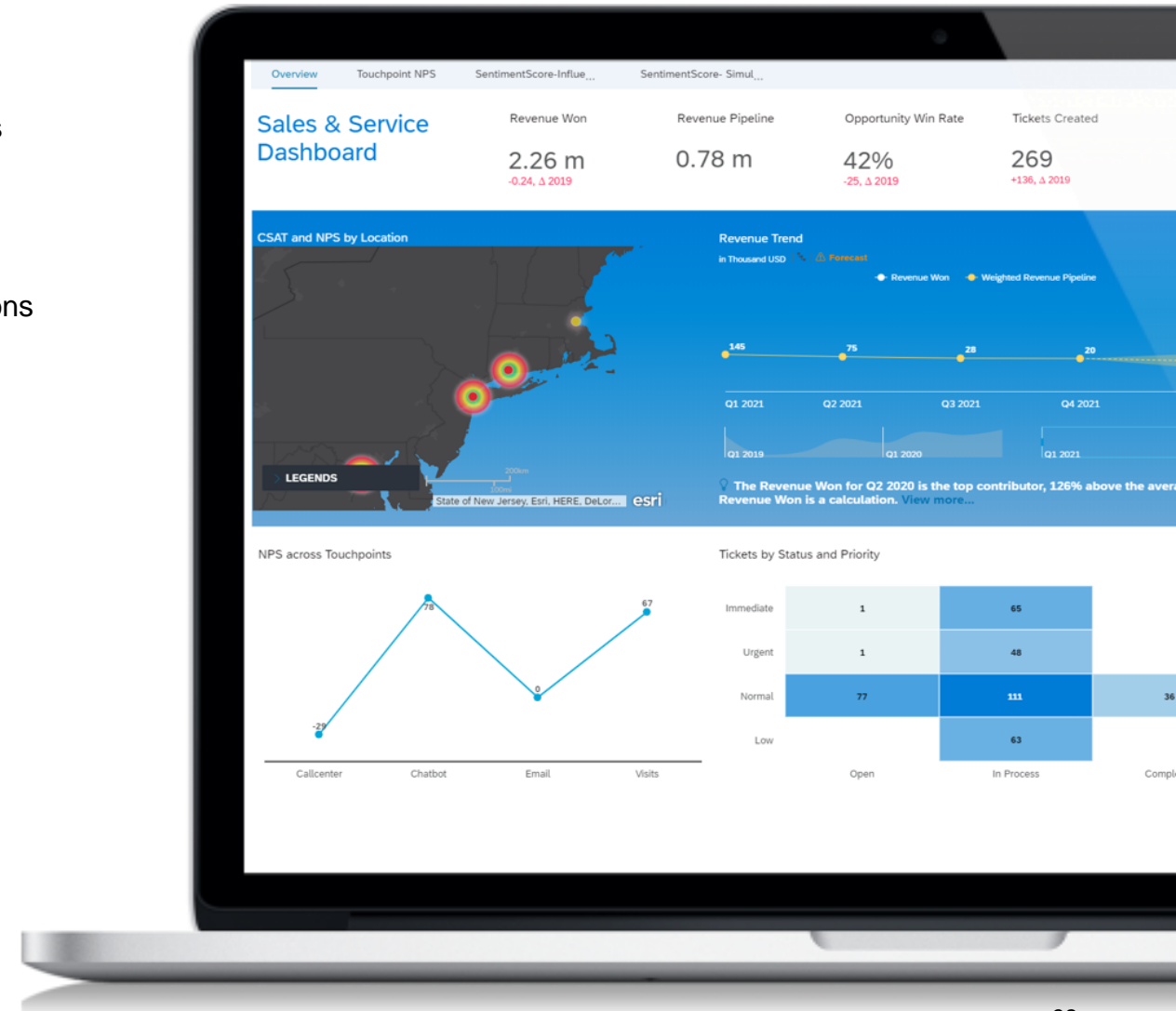
Over 100 Line of Business and Industry content packages available free-of-charge

## Line of Business

- Advanced Compliance Reporting
- Carbon Footprint Analytics
- Environment, Health and Safety
- Finance
- FI Operational Expense Planning
- Human Resources
- Liquidity Planning
- Marketing
- Procurement
- Product Cost Planning
- Project and Portfolio Management
- Project Budgeting & Planning
- Project Staff Planning
- Sales and Distribution
- Sports One
- Trade Management
- Travel & Expense
- Treasury Management for SAP
- Vendor Management System
- Workforce Planning
- + many more

## Industry

- Trading & Risk Management Analysis
- Banking
- Chemicals
- Consumer Products
- Customer Profitability Analysis
- Engineering, Construction & Operations
- Health Care
- High Tech
- Insurance
- Mill Products
- Mining
- Oil & Gas
- Professional Services
- Public Sector
- Higher Education and Research
- Real Estate
- Retail
- Rural Sourcing Management
- Utilities
- + many more





# Why SAP Analytics Cloud?

- **Analyze, predict and plan** all in one unified user experience
- **Connect live** to cloud and on-premise data sources and break down data silos
- **Make confident decisions** with automated insights powered by machine learning
- **Collaborate with ease**; add discussions, comments or share content on desktop or mobile
- **Innovate rapidly** with new innovations and features automatically added every quarter
- **Scale flexibly** to support users & enhance capabilities without increasing IT costs
- **Cloud software-as-a-service** solution fully hosted and maintained by SAP

# Thank you

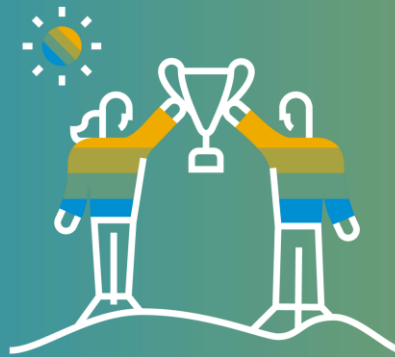
[SAP Analytics Cloud](#)

[Visit the Community](#)

[Explore our Roadmap](#)

[Experience for Free](#)

[Get Started](#)



Orla Cullen  
orla.cullen@sap.com