

Several 3D cubes in white, yellow, and green are floating in the upper right area of the slide.

SAP Integration Suite

A horizontal bar with a blue-to-yellow gradient is positioned below the subtitle. To the right, a large, complex stack of 3D cubes in various colors (white, yellow, orange, blue, purple, green) is shown, appearing to be part of the overall design.

The enterprise Integration Suite for hybrid
and heterogenous environments

Fouad Fahim, Solution Advisor Expert Center of Excellence of North American, SAP SE
September 2022

Disclaimer

The information in this presentation is confidential and proprietary to SAP and may not be disclosed without the permission of SAP. Except for your obligation to protect confidential information, this presentation is not subject to your license agreement or any other service or subscription agreement with SAP. SAP has no obligation to pursue any course of business outlined in this presentation or any related document, or to develop or release any functionality mentioned therein.

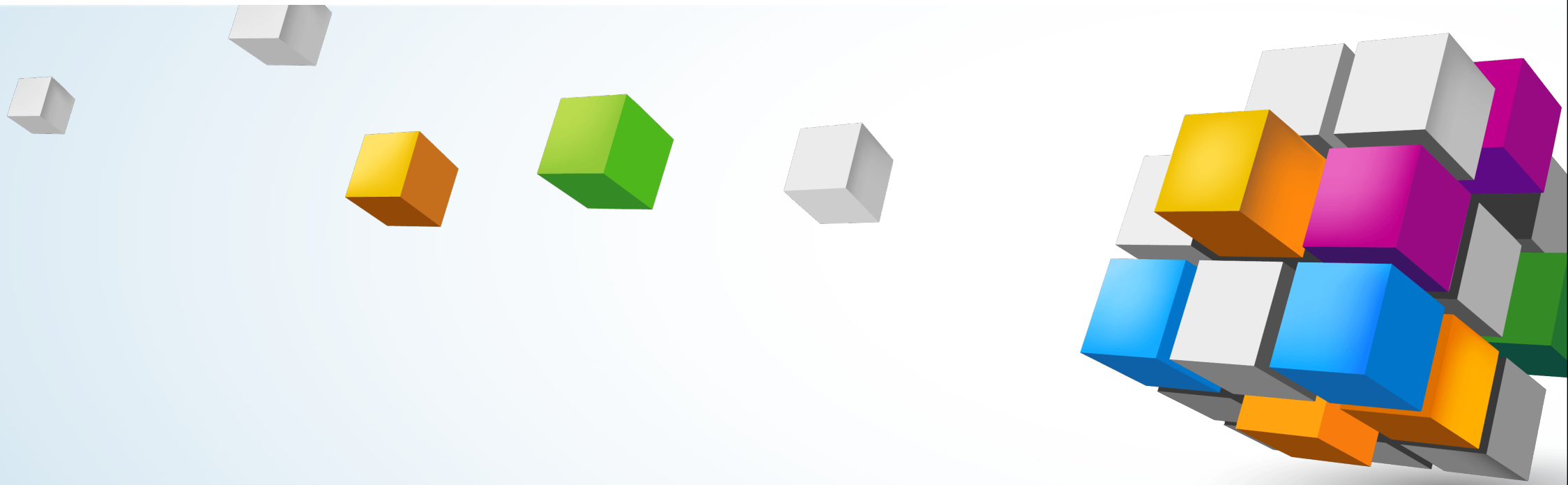
This presentation, or any related document and SAP's strategy and possible future developments, products and or platforms directions and functionality are all subject to change and may be changed by SAP at any time for any reason without notice. The information in this presentation is not a commitment, promise or legal obligation to deliver any material, code or functionality. This presentation is provided without a warranty of any kind, either express or implied, including but not limited to, the implied warranties of merchantability, fitness for a particular purpose, or non-infringement. This presentation is for informational purposes and may not be incorporated into a contract. SAP assumes no responsibility for errors or omissions in this presentation, except if such damages were caused by SAP's intentional or gross negligence.

All forward-looking statements are subject to various risks and uncertainties that could cause actual results to differ materially from expectations. Readers are cautioned not to place undue reliance on these forward-looking statements, which speak only as of their dates, and they should not be relied upon in making purchasing decisions.

Agenda

- [Intelligent Enterprises & the Strategic Role of Integration](#)
- [Integration Suite - The Hybrid Integration Platform for Intelligent Enterprises](#)
- [What makes the difference?](#)
- [Use Cases and Examples](#)
- [Core Integration Suite Capabilities](#)
- [Administration, Operations, and IT Governance](#)
- [Customer and Ecosystem](#)
- [Key take aways](#)

Intelligent Enterprises & the Strategic Role of **Integration**






Customer landscapes
are more **heterogenous**
than ever.

We understand your challenges



**How to achieve
seamless business
process inside
and outside the
enterprise**

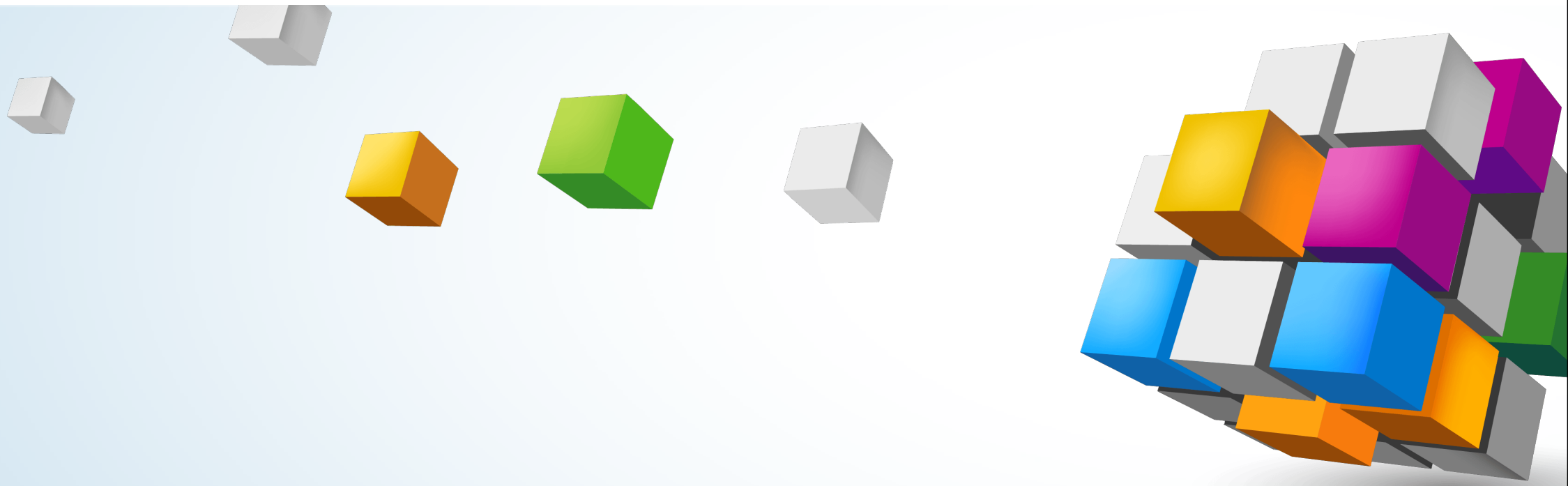


**How to accelerate
outcomes cost-
effectively?**



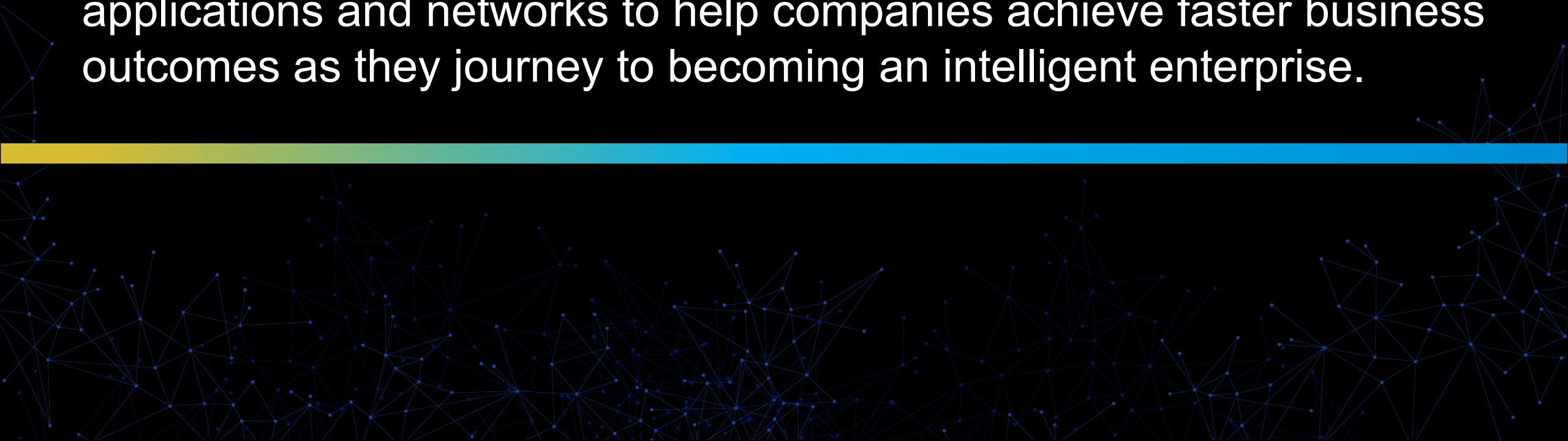
**How to
modernize
and adapt to
change?**

Integration Suite - The Hybrid Integration Platform for Intelligent Enterprises



Introduction

Deliver **SAP Integration Suite** as an enterprise-grade integration platform that simplifies and accelerates integration of data, process, applications and networks to help companies achieve faster business outcomes as they journey to becoming an intelligent enterprise.

A decorative network pattern of blue dots and lines is visible in the background, particularly on the left and right sides of the slide.

Integration has become the key enabler for intelligent enterprises

Accelerate business outcomes with simplified integration

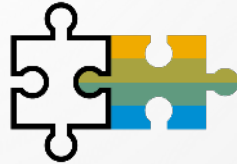


Holistic
integration

Versatile, multi-cloud platform

Support all types of integration use cases required in cloud and hybrid landscapes

Open
integration



Integrate anything, anywhere

3.000+ APIs and 170+ connectors for third-party solutions and custom extensions by SAP and partners



Out-of-the-box
integration

Accelerated time to value

Mission critical business processes with pre-defined 2.500+ integrations for cloud and on premise

AI-Driven

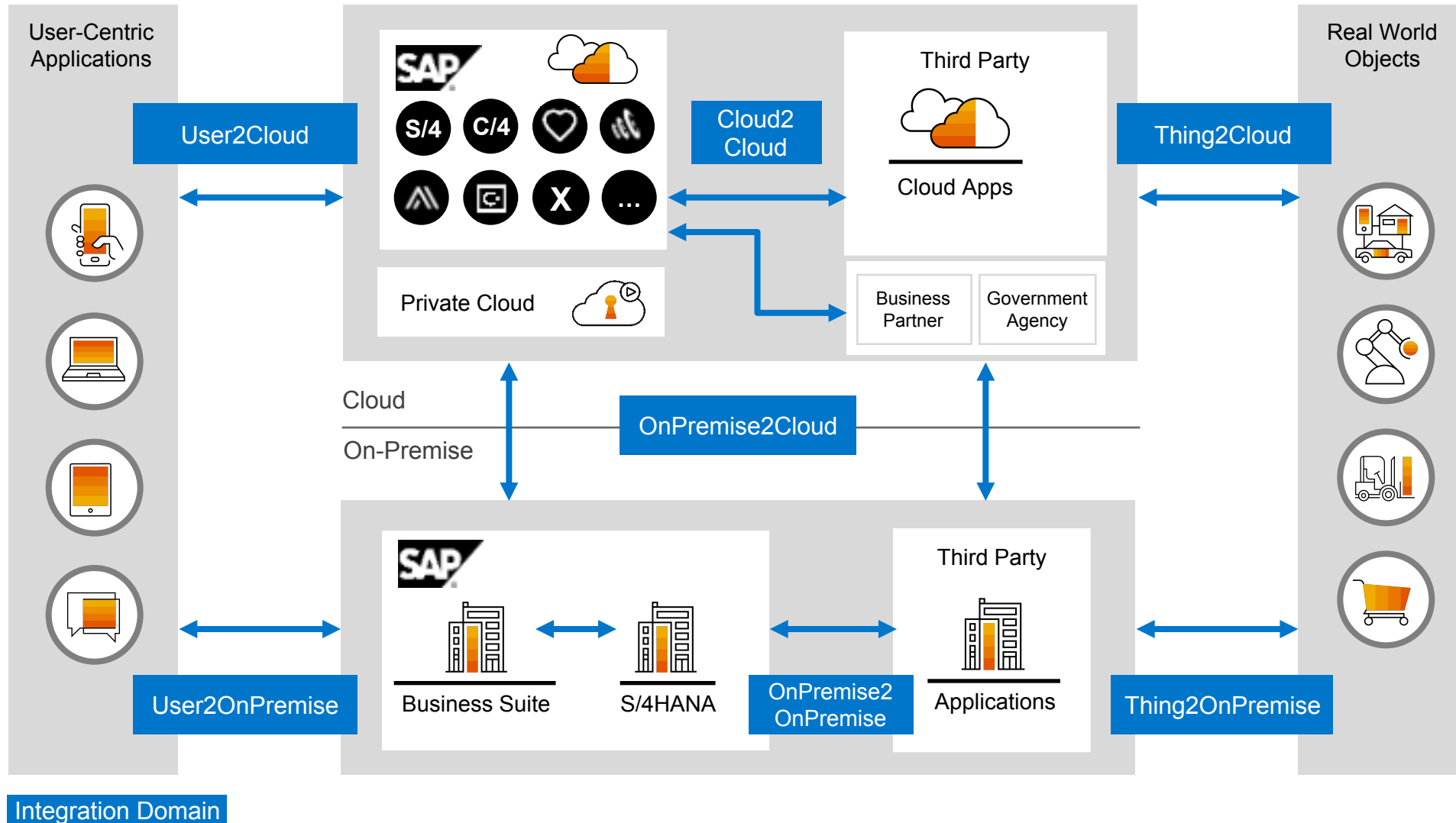


AI-assisted to speed integration

Accelerate the speed of intelligent integrations to attain desired business outcomes

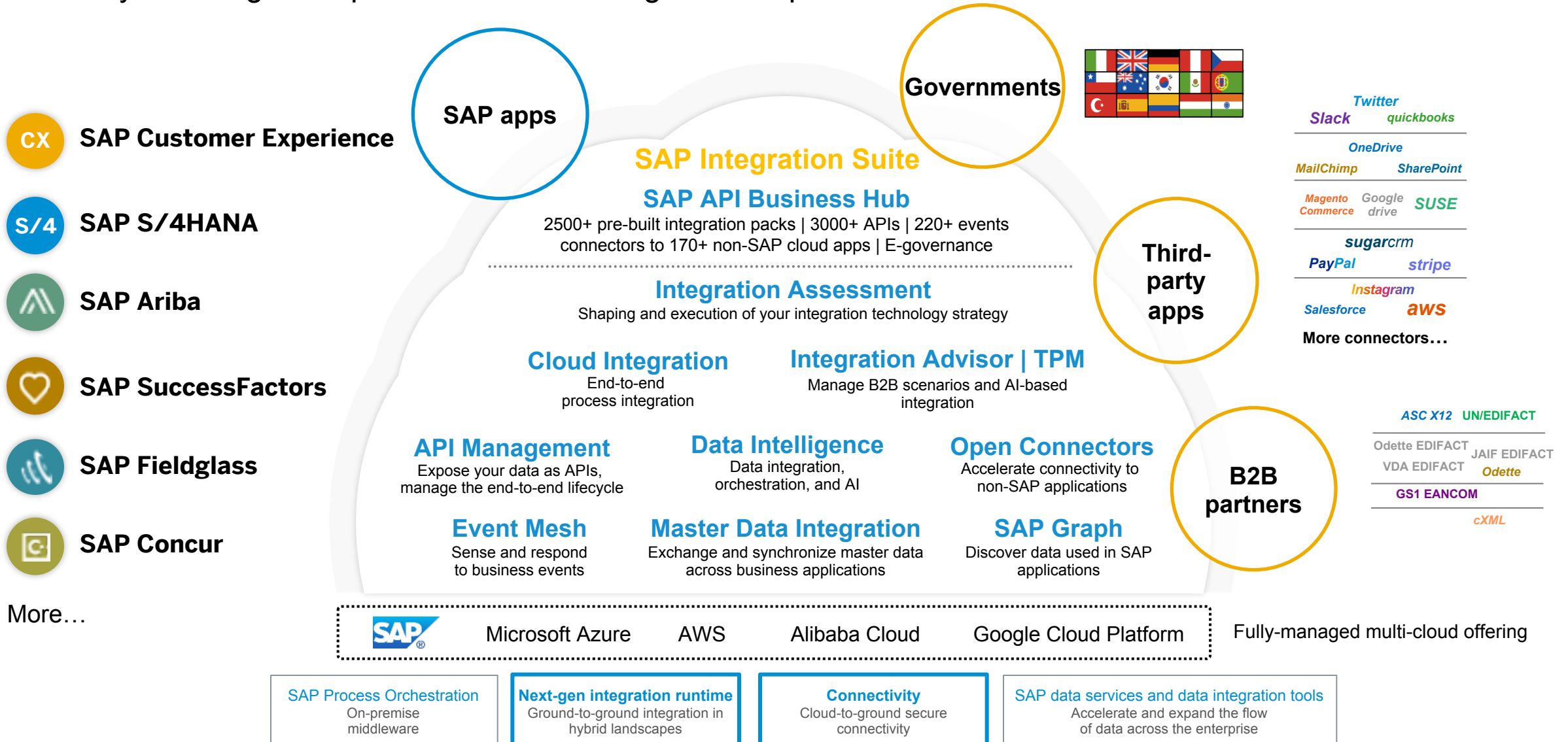
Integration domains

Assessment and scoping of your hybrid integration landscape




Integration at SAP

SAP's hybrid integration platform for the Intelligent Enterprise



SAP Integration Suite


Who benefits?



Business users

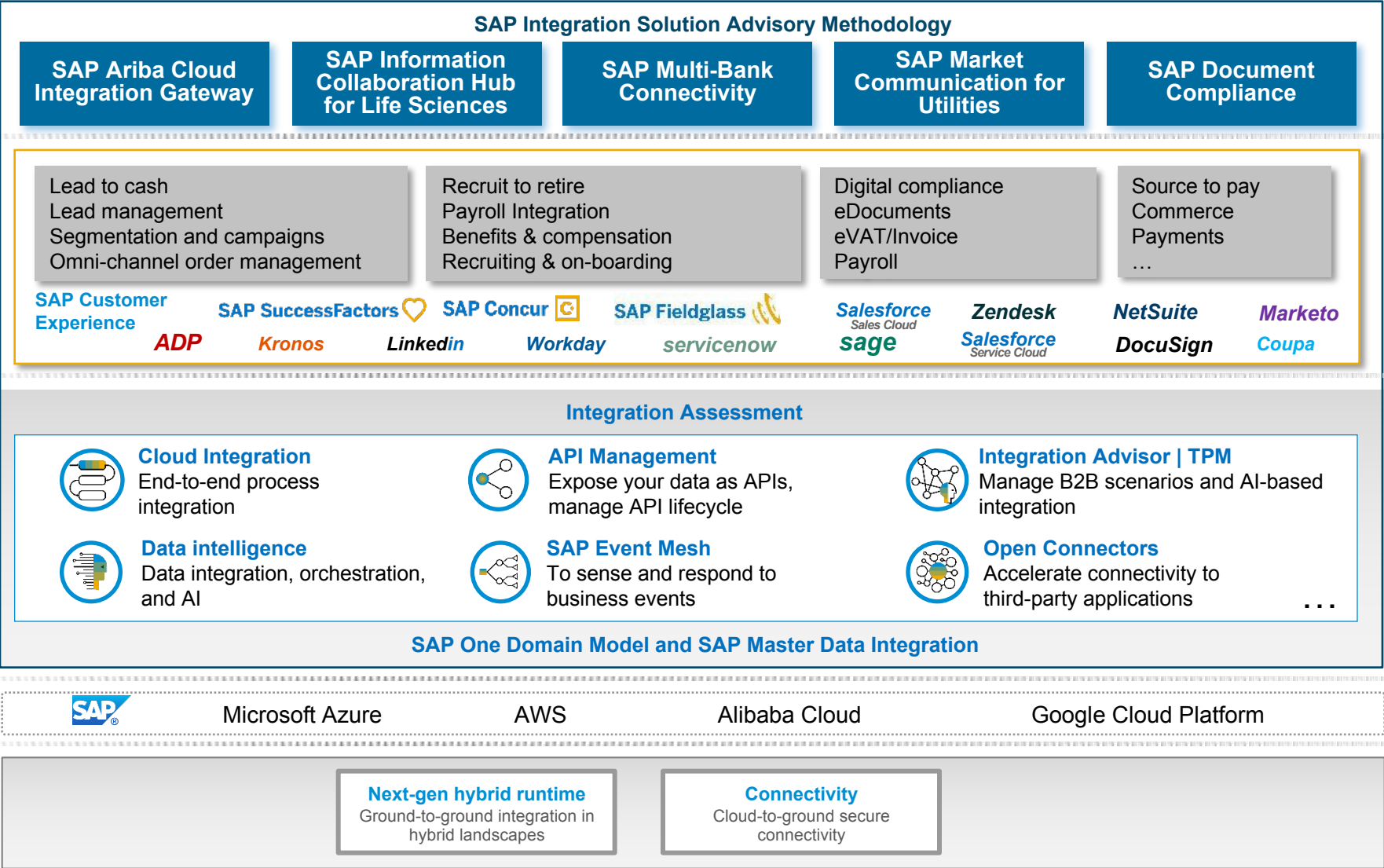


Business domain experts
self-service integrations



Citizen integrators

Application developers
Integration developers
Integration administrators



LOB and industry integration clouds

API Business Hub

Integration SaaS with integration packs delivering business outcomes faster

Integration platform

Versatile, enterprise-grade integration platform with simple consumption-based pricing


Fully-managed multi-cloud offering

Hybrid capabilities

Integration packs for Intelligent Enterprise business scenarios

Pre-built SAP S/4HANA integrations with SAP and third-party applications

SAP Customer Experience Magento Shopify
Amazon Services HubSpot Zoho Marketo
Salesforce Sales Cloud Zendesk NetSuite

SAP Ariba  GEP Coupa
Blue Yonder Mercateo

SAP SuccessFactors  SAP Concur  SAP Fieldglass 

Kronos Automatic Data Processing (ADP)
Alight Oracle Human Capital Management
Workday LinkedIn

**Lead
to Cash**

**Issue
to Resolution**

SAP Customer Experience Jira ServiceNow
Salesforce Service Cloud Freshdesk ServiceMax

**Source
to Pay**

**Payment
Integration**

QuickBooks FreshBooks Vertex
Tipalti Microsoft Dynamics Sage

**Recruit to
Retire**

**Digital
Compliance,
Business to
Business (B2B)**

DocuSign Adobe Sign ASCX12
UNECE UN/EDIFACT



**Plan to
Production**

Snowflake Teknoleum Paradata

Fully maintained and updated by SAP

2500+

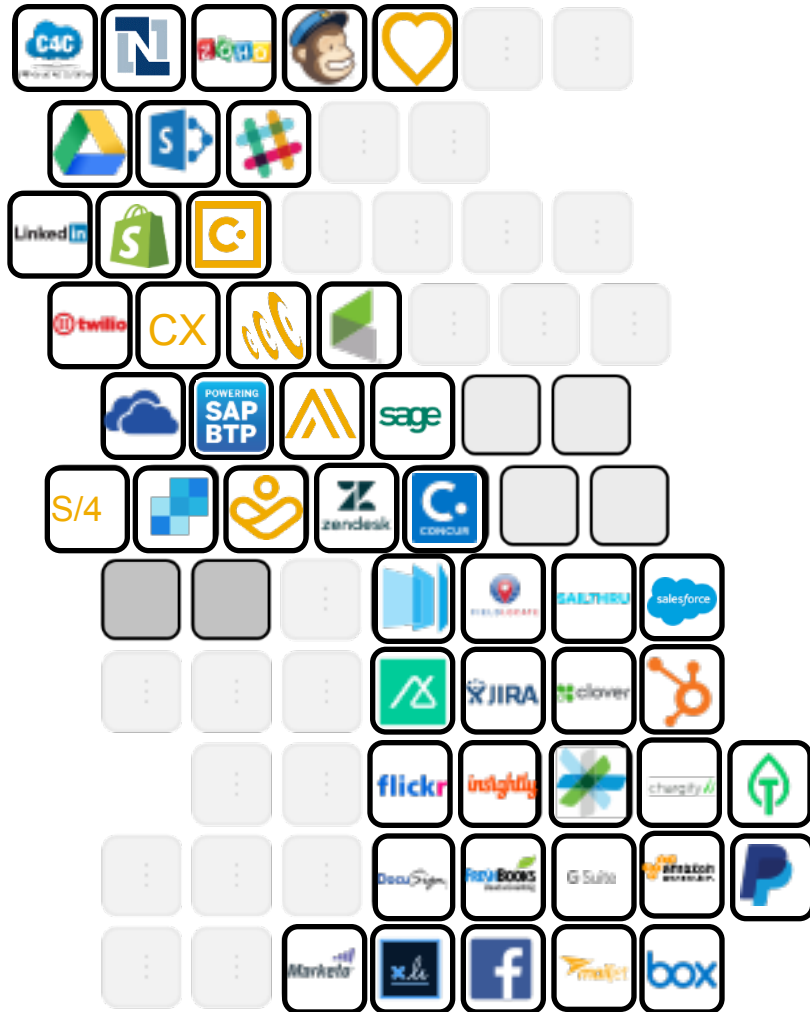
Prebuilt Integrations

170+

Business events

SAP Integration Suite helps you deliver business outcomes

In fast evolving hybrid landscapes



**SAP
Integration
Suite**



Optimize and automate business processes

Optimize and automate fragmented business processes to harmonize experiences across your organization.



Meet e-government and regulatory compliance

Standardize the digital registration of documents to meet regulatory compliance requirements.



Power e-commerce

Achieve a holistic view of customer engagements across multiple touch points.



Enable the API economy

Unlock unique services and create new business models to grow competitive advantage.



Deliver customer insight

Gain a 360-degree understanding of your customers to increase loyalty and profitability.



Connect business-to-business (B2B) partners

Create an efficient, secure, and scalable B2B platform to connect with your trading partners.



Creating a future-proof IT landscape

Unlock the value of your existing investments with an API-first approach.

Connect and automate your business

Integration capabilities of SAP BTP

Achieve

seamless business processes

- **Gain flexibility** to compose and innovate processes *with API-led integration*
- **Respond faster to customers, employees and partners** *with real-time processing of business events*
- **Integrate applications and data across diverse application landscapes everywhere** *with comprehensive integration capabilities*

Increase efficiency and productivity across your business network

Accelerate

connectivity

- **Streamline Any-to-Any, SAP and third-party integrations** *with thousands of prebuilt integrations and connectors*
- **Take a systematic approach to solving common integration challenges** *with best-practices methodology*
- **Gain visibility to industry-leading SAP application business objects** – *product, customer, order - and context*

Connect your business processes faster and at a lower TCO

Modernize

integration

- **Reduce complexity** *with AI-powered integration development and recommendations*
- **Deploy with trust and security** *with a cloud-native environment managed by SAP*
- **Interoperate within hybrid landscapes** *on a choice of popular cloud providers*

Futureproof your integration strategy

SAP Integration Suite

Example customer & partner success in numbers



50 – 60%

Reduction of IT spend for integration



50%

Reduction in integration costs



20%

Faster time to market due to quicker development time frame



Endress+Hauser

>5x 20%

Increased project speed and reduced costs

Cost savings using predelivered integration packs



40% 60%

Reduction in TCO across its integration landscape

Reuse of existing ESR content of PI/PO



75%

Faster migrations to Integration Suite, compared to migrations using third-party integration tools



80% 30%

Faster time to value with real-time integration

Lower implementation costs and lower total cost of operations

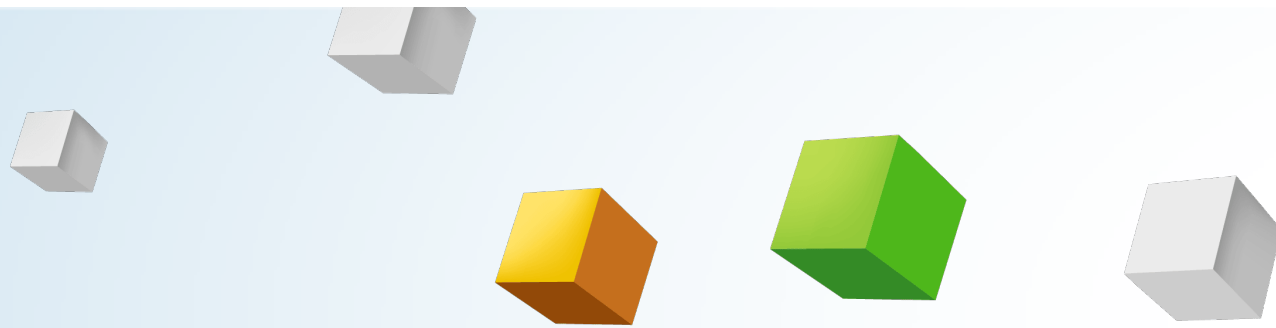


15.2% 33%

Increase in sales consultant productivity in one year

Fewer carbon emissions through improvements across supply-chain, logistics, and production processes

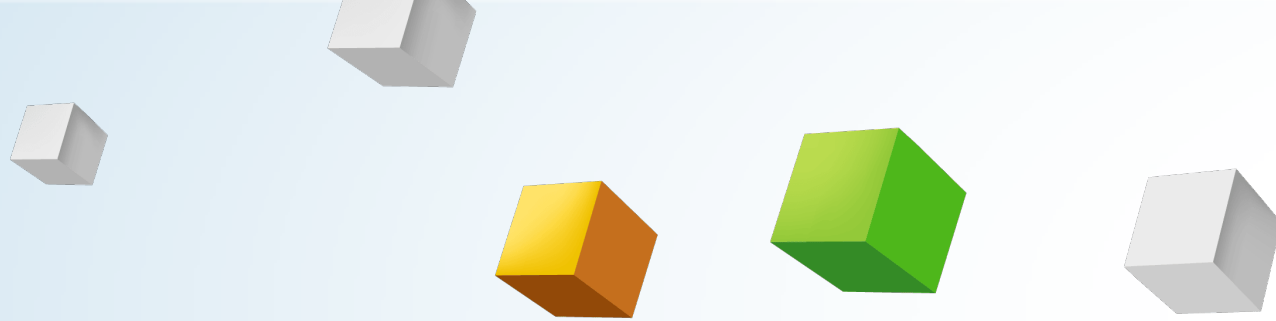
What makes the difference?



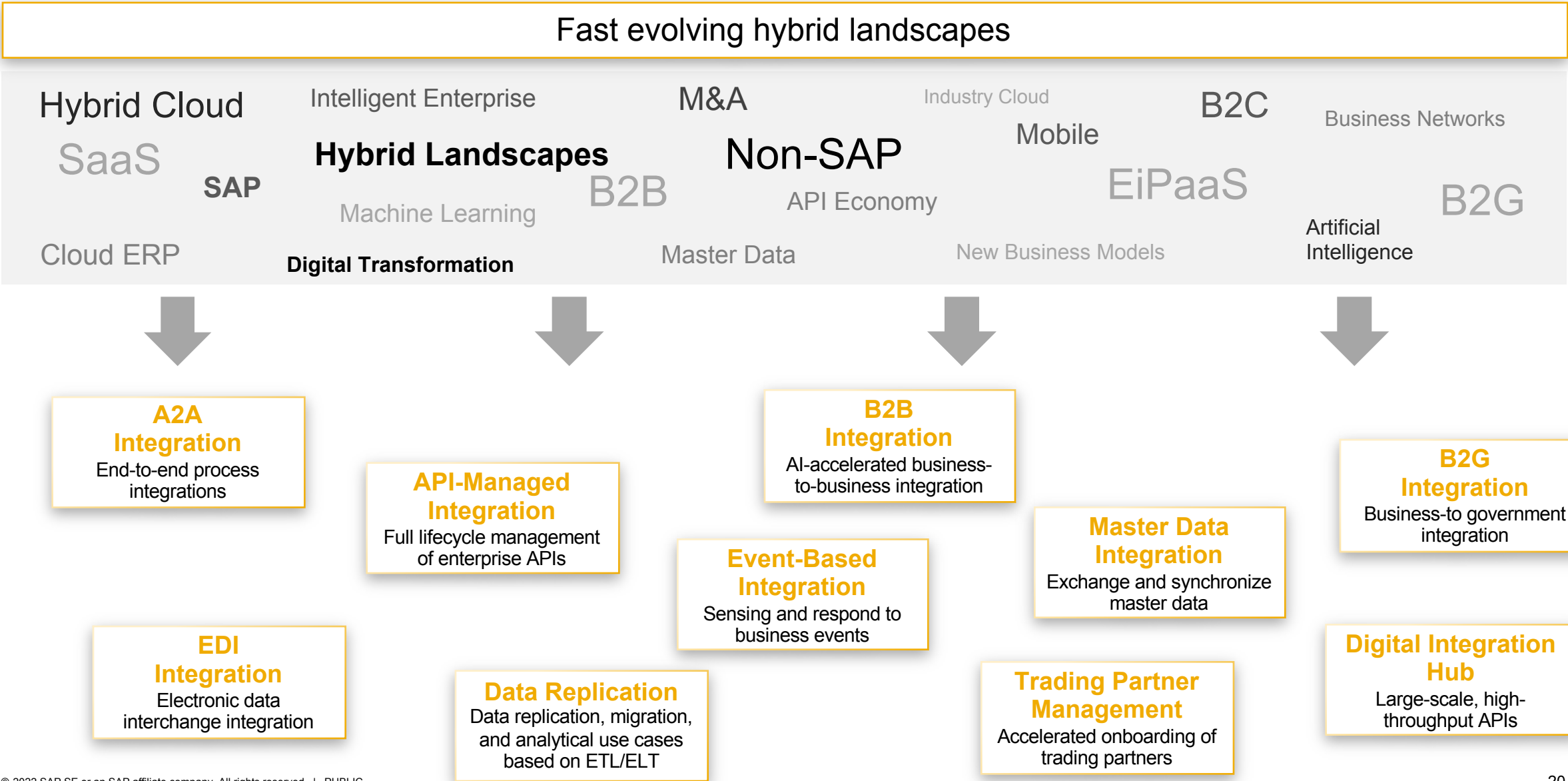
Top 10 reasons to choose SAP's Integration Suite as your enterprise-wide integration platform

- 1 Versatile and Enterprise-grade integration platform** covering all integration styles and patterns: A2A/B2B/B2G, APIs, events, digital integration hub, digital ecosystems.
- 2 Out-of-box Integration Packs**, APIs, events, domain models to jump-start your integration projects
- 3 Rich set of connectivity options** and standard adapters for A2A and B2B/B2G integration, 170+ **third-party SaaS connectors**, provided by SAP as well as by partners
- 4 Fully vendor managed multi-cloud services in major hyperscalers** and all in outcome based pay-per-use pricing provides flexibility to run the same integration artifacts across multiple environments.
- 5 Simplify the process of business partners collaboration** with the **power of artificial intelligence**.
- 6 Benefit from SAP's continued innovation and long-term commitment** to simplify and accelerate enterprise integration
- 7 Strong focus on security** such as data isolation, multitenancy, content encryption, and signing, OWASAP Top-10, single sign-on, secure on-premise connectivity
- 8 Share and learn from a community and partner ecosystem**
- 9 Create simple connected digital experiences** for your consumers, partners, and employees with full lifecycle management of your APIs.
- 10 SAP Integration Solution Advisory Methodology** with strong customer focus now part of SAP Integration Suite

Use Cases and Examples

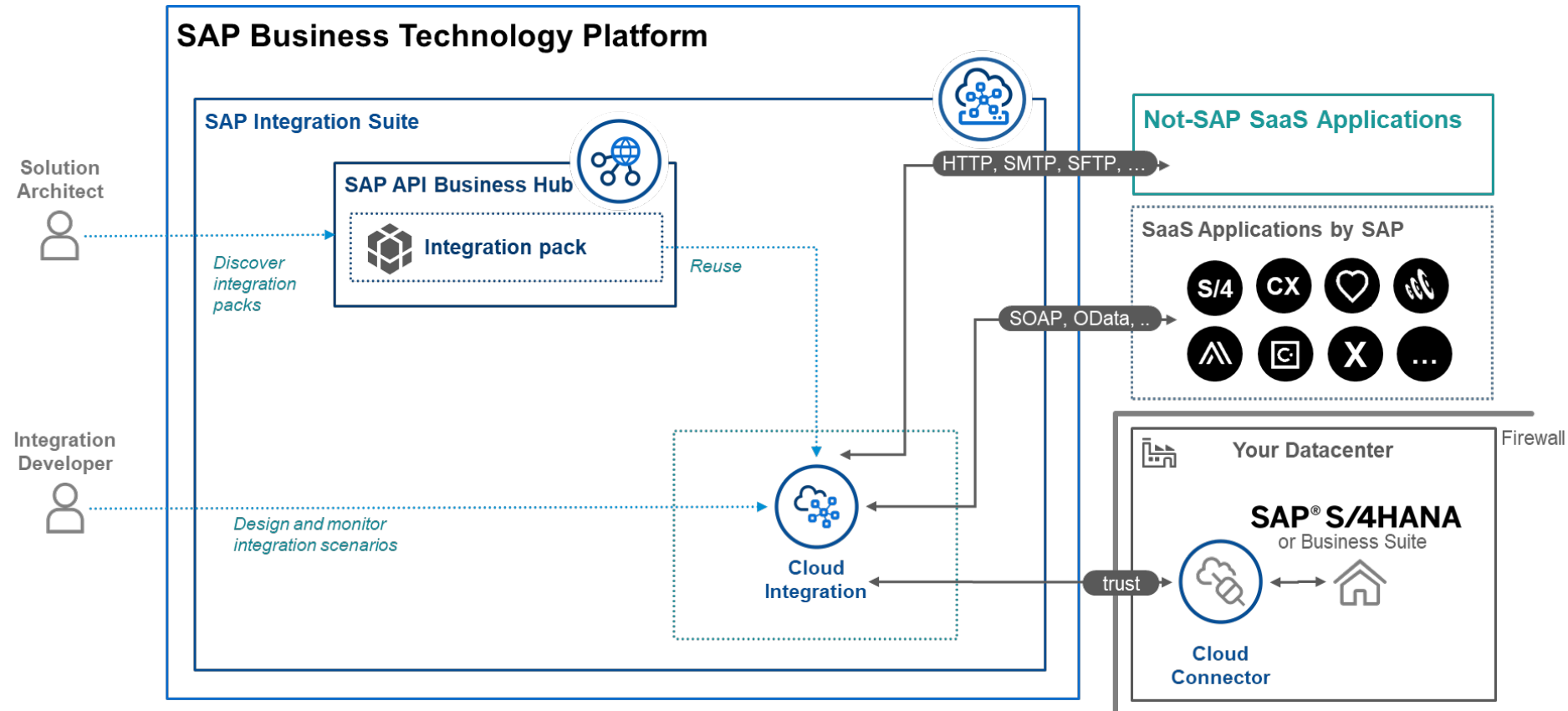


SAP Integration Suite - Use cases



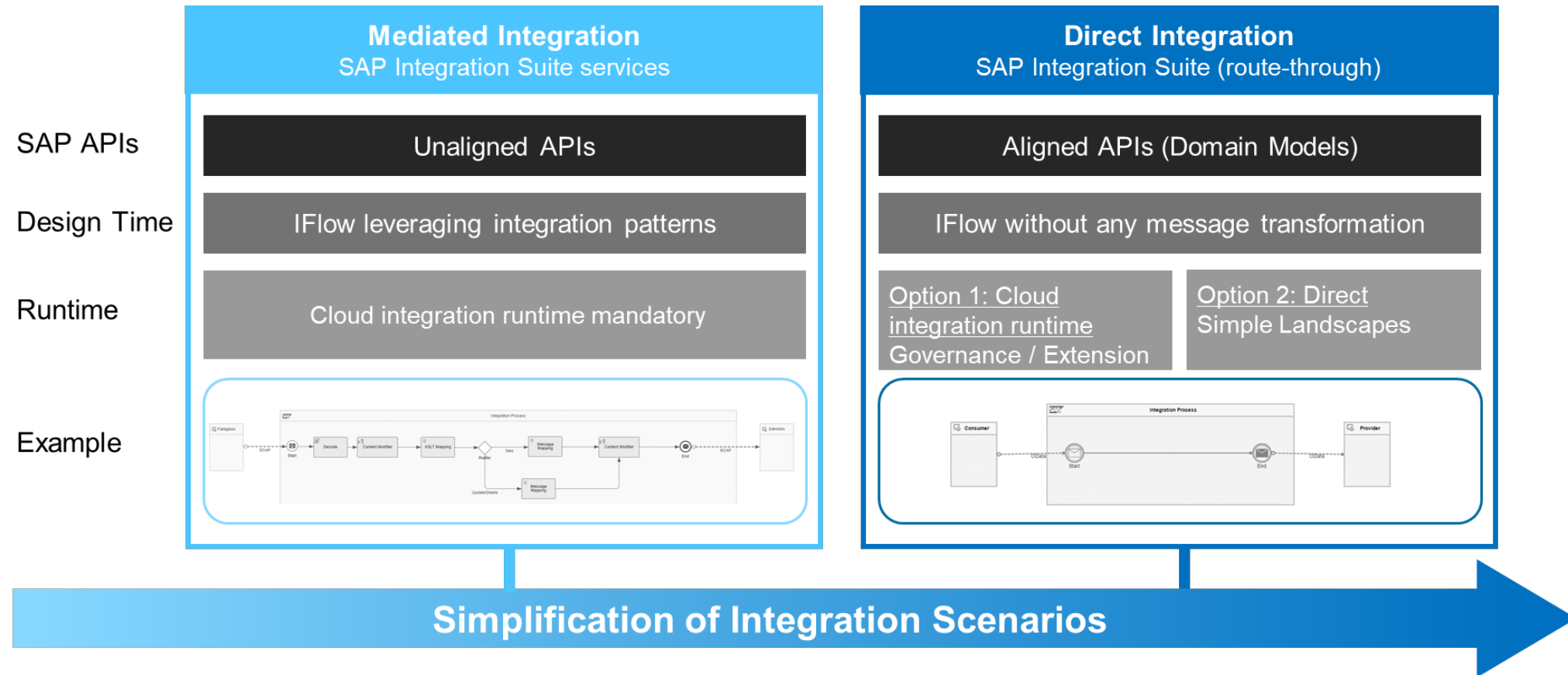
A2A integration: end-to-end process integrations

Chain business process steps between business applications by exchanging transactional data



Example: Exchange sales orders in a lead-to-cash process across SAP Customer Experience solutions and SAP S/4HANA

Evolution of SAP Integration Content



SAP applications can synchronize business objects with common attributes and use common semantics, which reduces SAP-to-SAP integration efforts for customers: New implementations can take advantage of SAP Master Data Integration for scenarios for which SAP has delivered aligned domain models. SAP Integration Suite supports both types of integration scenarios – those for unaligned as well as aligned APIs.

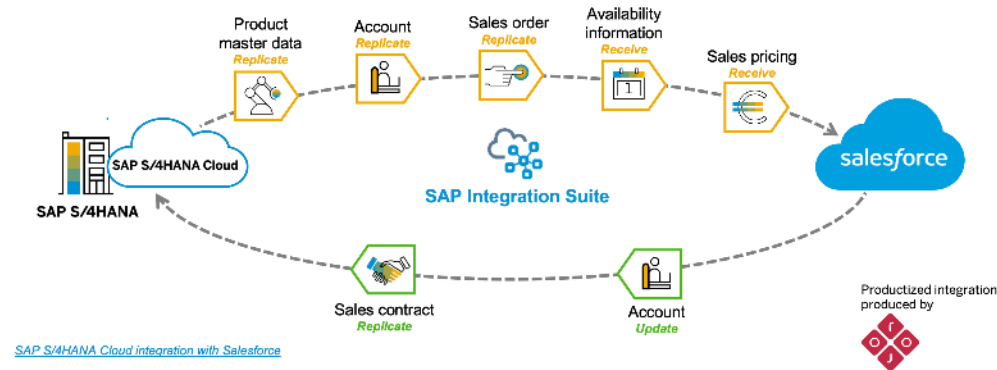
[Integration Architecture Guide for Cloud and Hybrid Landscapes](#)

SAP S/4HANA to non-party integration packs



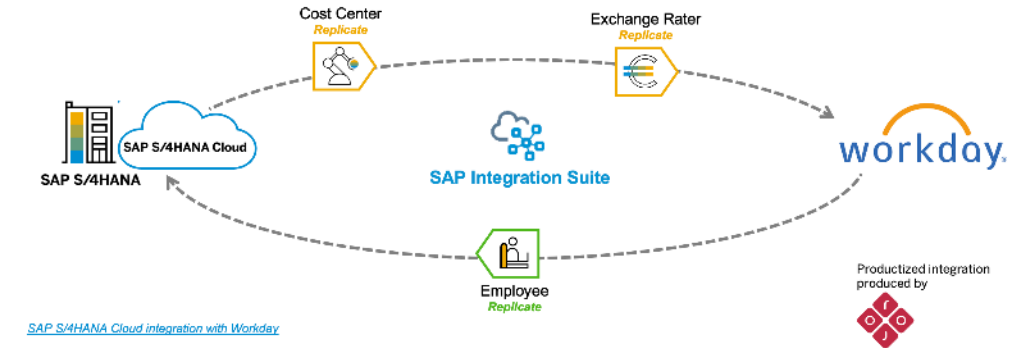
SAP S/4HANA Cloud Integration with Salesforce

- This integration content enables you to connect SAP S/4HANA (Cloud) with Salesforce seamlessly.
- It supports automatic transfer of data between SAP S/4HANA (Cloud) and Salesforce.
- Reduce your TCO and TCI with pre-defined integration content.



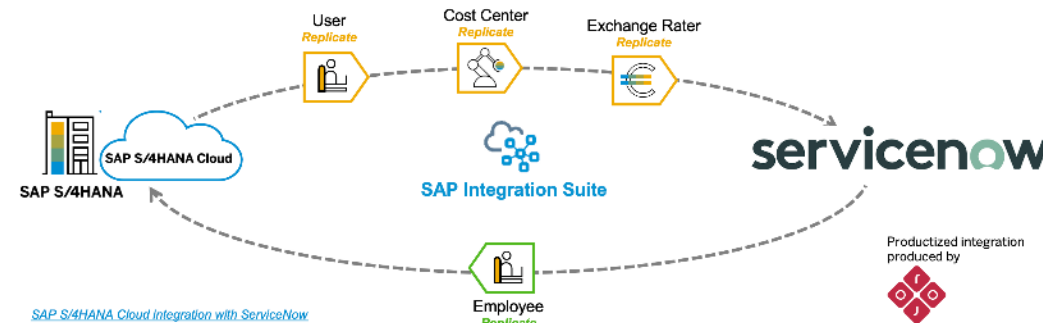
SAP S/4HANA Cloud Integration with Workday

- This integration content gives the security of direct connectivity between SAP S/4HANA (Cloud) and Workday.
- It supports automatic transfer of data between SAP S/4HANA (Cloud) and Workday.
- Reduce your TCO and TCI with pre-defined integration content.



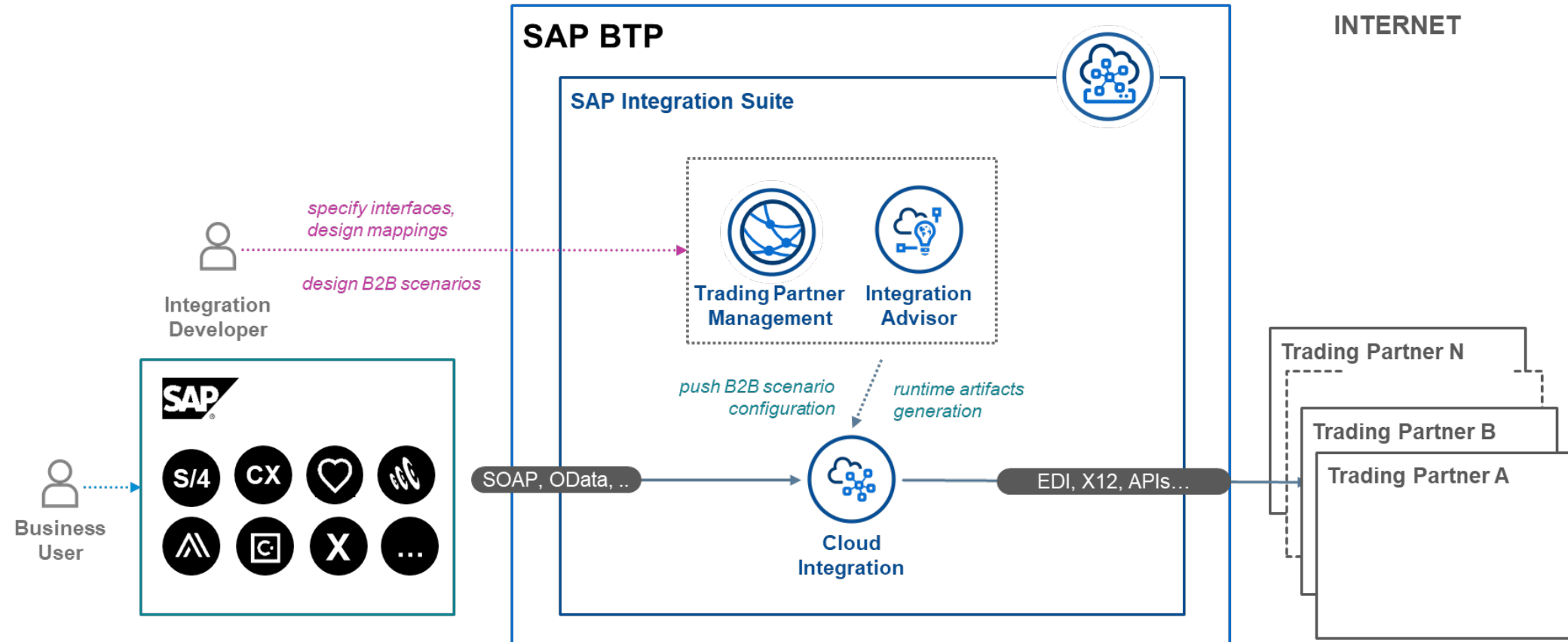
SAP S/4HANA Cloud Integration with ServiceNow

- This integration content supports end-to-end integration between SAP S/4HANA (Cloud) and ServiceNow.
- It ensures master data consistency between the integrated systems.
- Reduce manual process steps and save the cost and implementation efforts.



AI-accelerated **business-to-business (B2B)** integrations

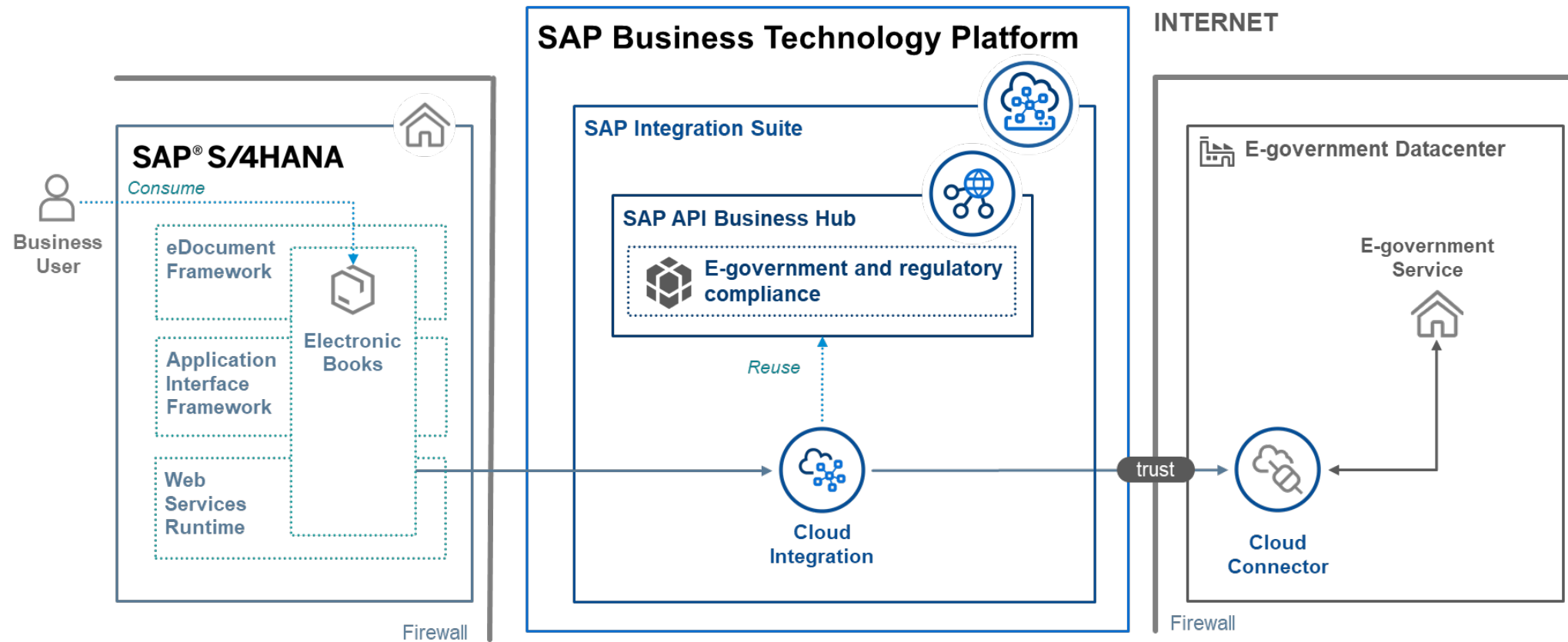
Chain business process steps between business partners leveraging standard B2B protocols



Example: Exchange purchase orders using B2B standards such as ANSI ASC X.12 or UN/EDIFACT in a design-to-operate process that integrates a manufacturer with suppliers

Business-to-government integrations leveraging prebuilt integrations

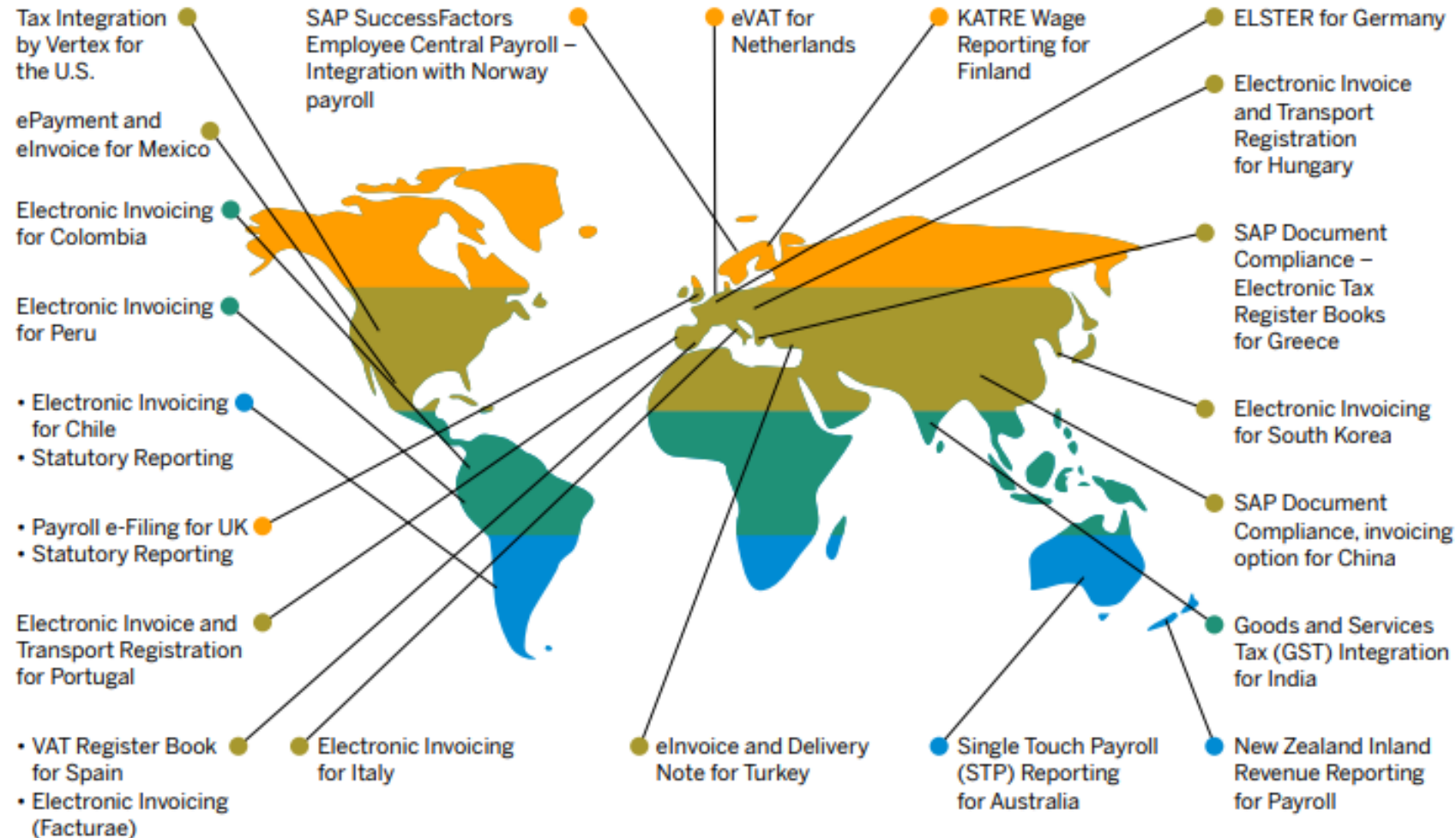
Transform transactional data into predefined exchange formats and transfer it to legal or tax authority systems



Example: File goods and services tax returns from SAP S/4HANA to the Goods and Services Tax Network (GSTN) organization of India in a prescribed format and protected fashion

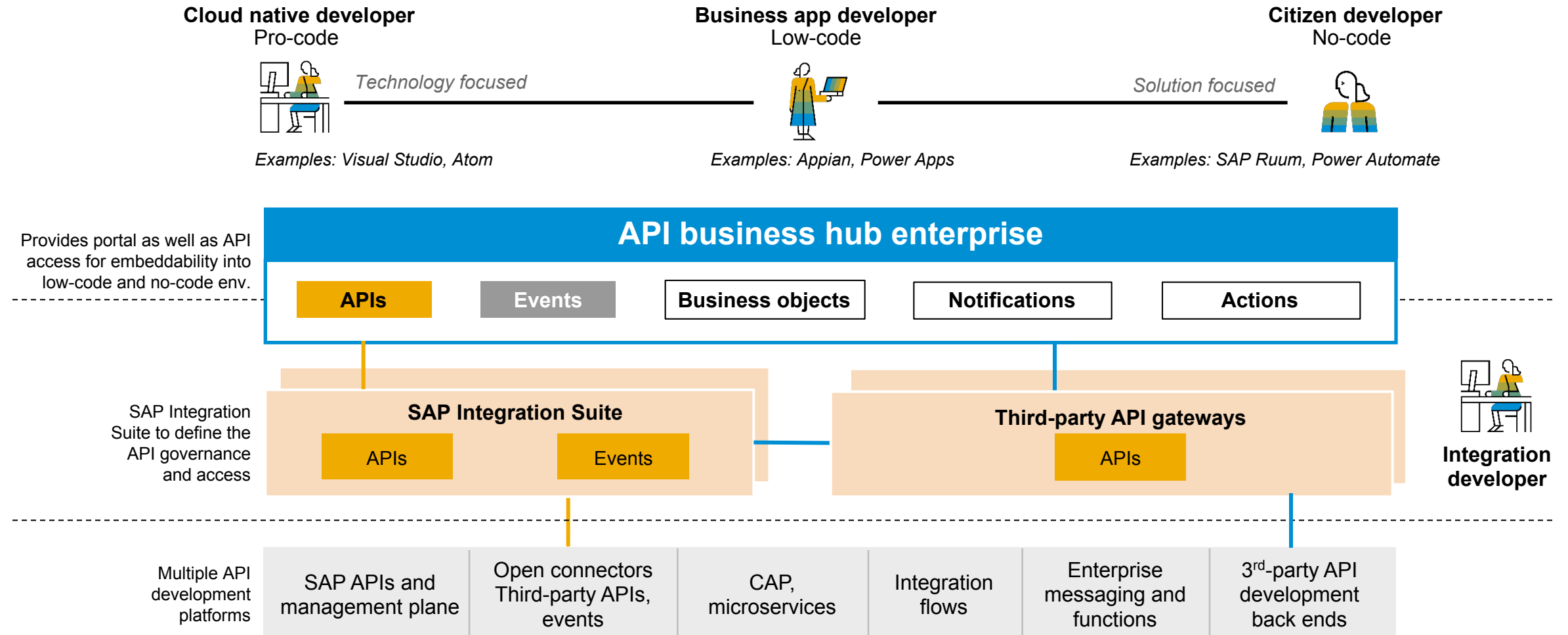
Business-to-government (B2G) integrations

Digital compliance through e-governance content for 30+ countries

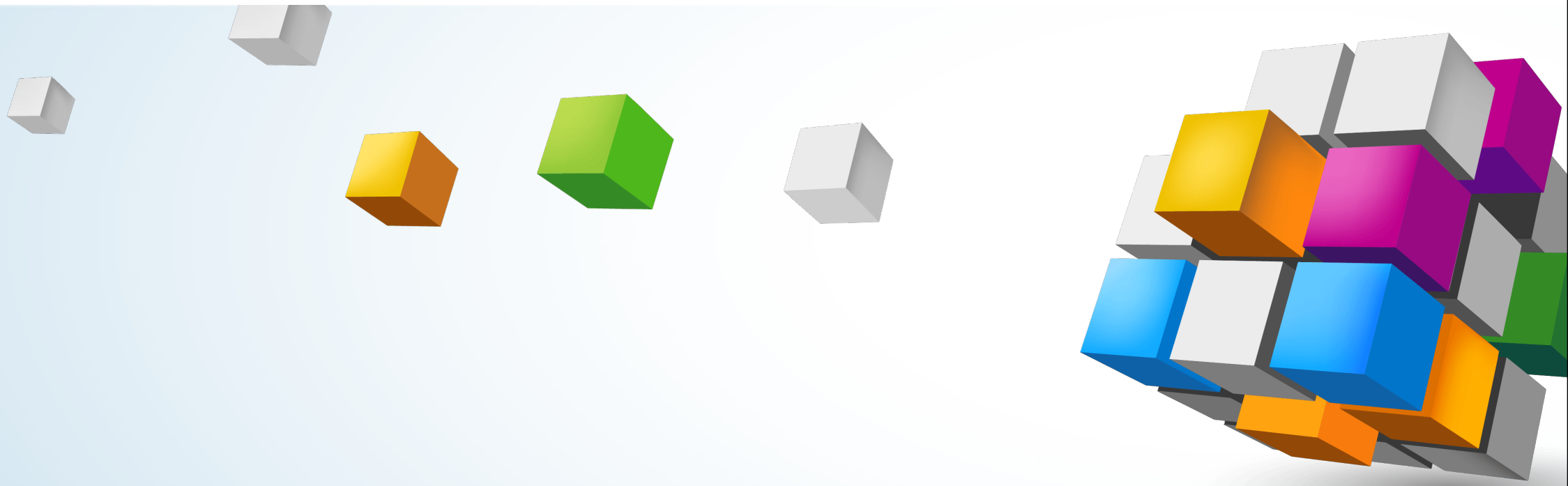


API-managed integration with SAP Integration Suite

Fostering the developer ecosystem with API business hub enterprise



Core **Integration Suite** Capabilities



Cloud Integration

Supporting a variety of integration approaches and out-of-the-box features

Hybrid and cloud application integration

- Intuitive web interface with built-in templates
- Supporting A2A and B2B/B2G scenarios with focus on third-party

Cloud technology

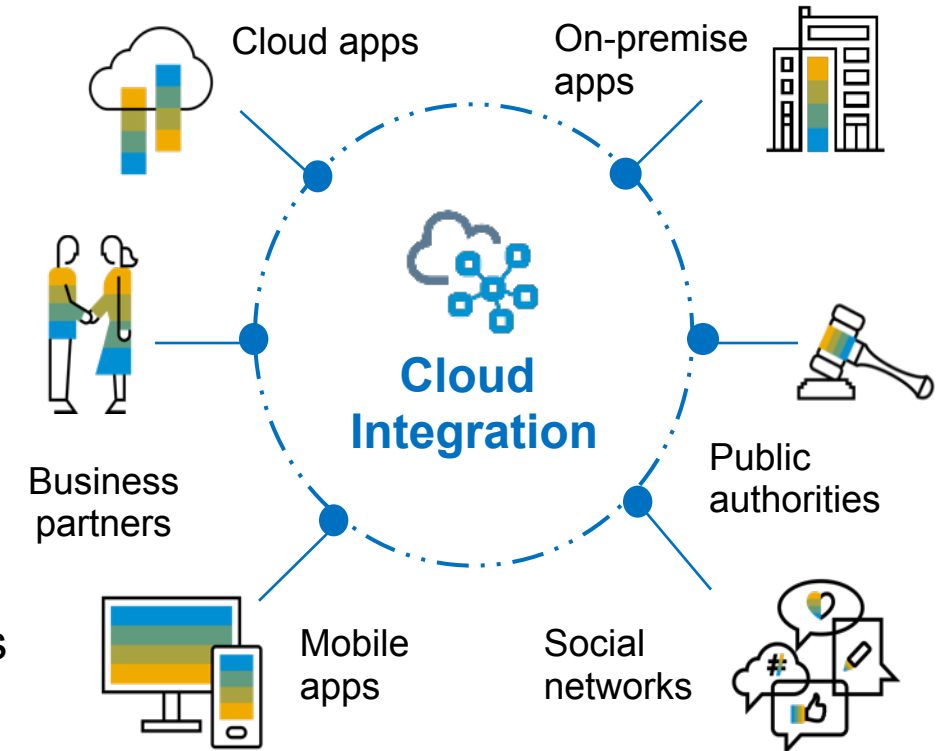
- Strong security focus and infrastructure availability
- Access via public OData APIs

Prepackaged content

- Prepackaged integration content to jump-start integration projects and get productive quickly
- Extension of pre-delivered content to include custom requirements

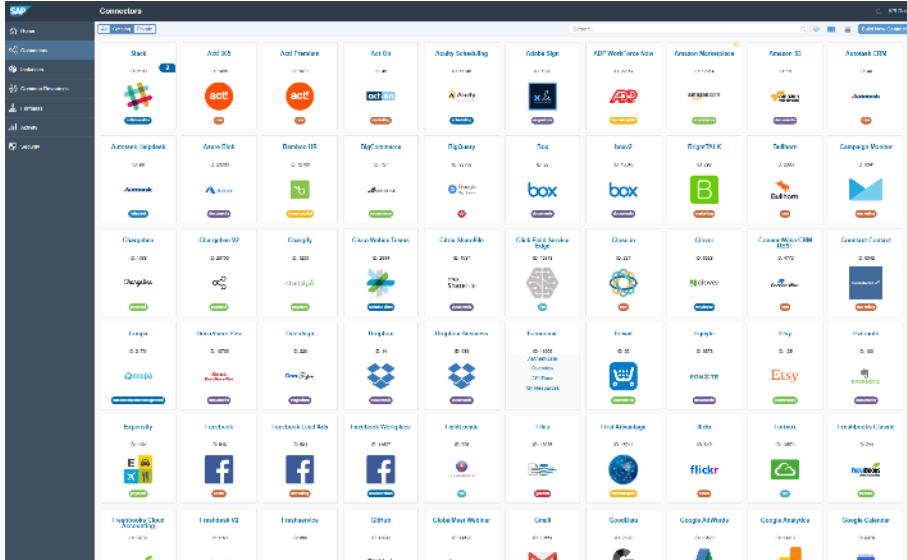
Ecosystem

- Ability to integrate with business networks
- Open to partners for developing integration content and adapters



Open Connectors

Take advantage of the REST based API approach in scenarios with multiple third-party systems



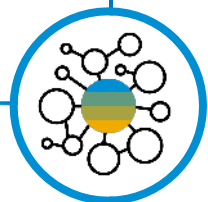
Extend connectors

- Pre-built common resources that can be extended
- Create consistent data model based on your integration needs



Out of the box connectivity to third-party applications

- Connectors to 170+ popular third-party applications
- REST API with:
 - Same authentication
 - Same data model
 - Same error handling
 - Same pagination
- Built-in interactive API documentation in Open API specification



Available connectors



Comprehensive set of connectivity options

SAP Integration Suite

200+ connectors to accelerate integration development

Open spec connector

- HTTP, HTTPS (incl. REST), SOAP
- FTP(S), SFTP
- Mail (SMTP, IMAP, POP3)
- OData V2 & V4
- IDoc, RFC, XI
- AMQP, JMS**, AS2**, AS4**
- Kafka
- JDBC, LDAP

Connectors to SAP & third-party apps

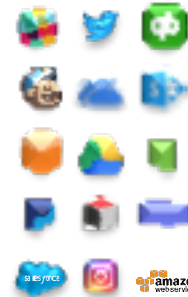
- SuccessFactors, Ariba
- AWS
- Microsoft Dynamics
- Salesforce
- Workday**, ServiceNow, Dropbox**
- Twitter, Facebook
- SugarCRM
- Elster*
- ...



Full list of connectors by SAP
in [SAP product documentation](#)

Open Connectors to third-party apps

- Cloud storage
- Collaboration
- CRM
- ECommerce
- ERP
- eSignature
- HCM
- Field services
- Finance
- Help desk
- Messaging
- Payments
- Social
- ...



Full list of open connectors
in [SAP product documentation](#)

Adapters built by partners

Example list

- iShare
- Kafka
- MQTT
- Office 365
- SharePoint



List of connectors by partners in [SAP API Business Hub](#) -> partner content

Adapter development kit

- [Framework](#) to create new adapters
- [Certification](#) available

Simplify **cloud-based B2B integration** by combining **Integration Advisor**, **Trading Partner Management*** and **Cloud Integration**

Integration Advisor

- Definition and documentation of interfaces and mappings
- Central documentation of B2B and SAP libraries
- Intelligent and crowd-sourced proposal service

Trading Partner Management*

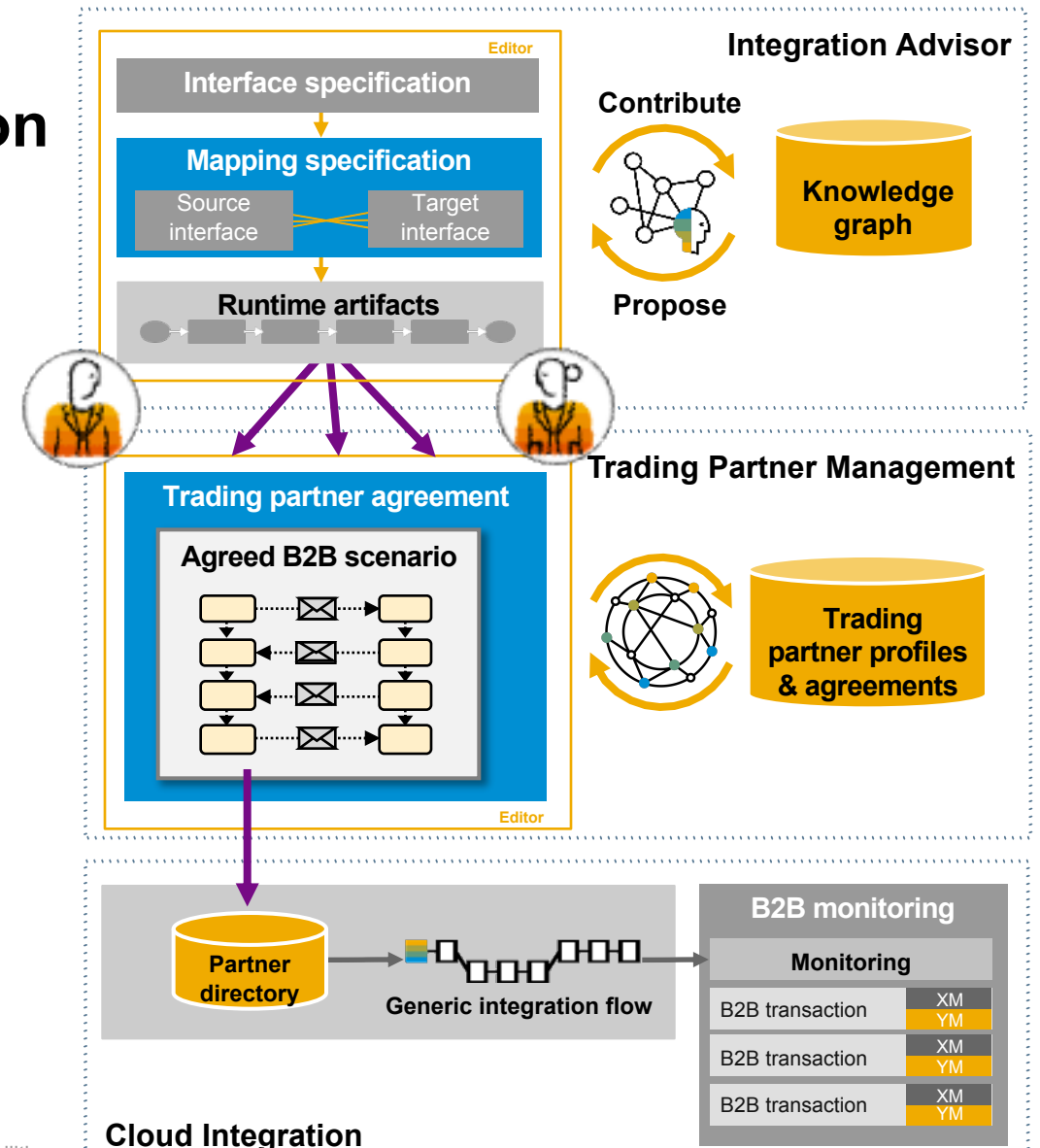
- Creation and maintenance of B2B scenarios
- Consideration of individual aspects and requirements per trading partner
- Push B2B scenario configuration to partner directory

Cloud Integration

- Stores configuration in partner directory
- Processes B2B transactions with one integration flow

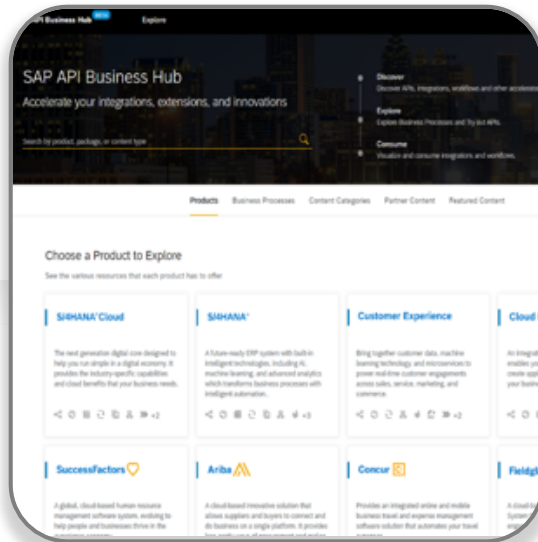
B2B monitoring

- Monitors the B2B transactions at runtime in corporation with trading partner agreement data

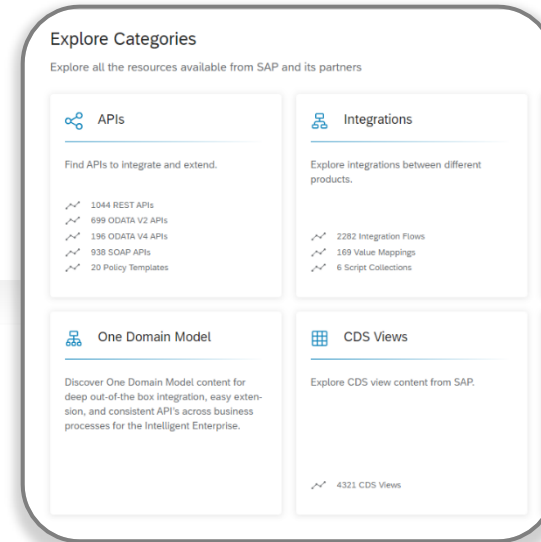


Streamline any-to-any, SAP and third-party integrations

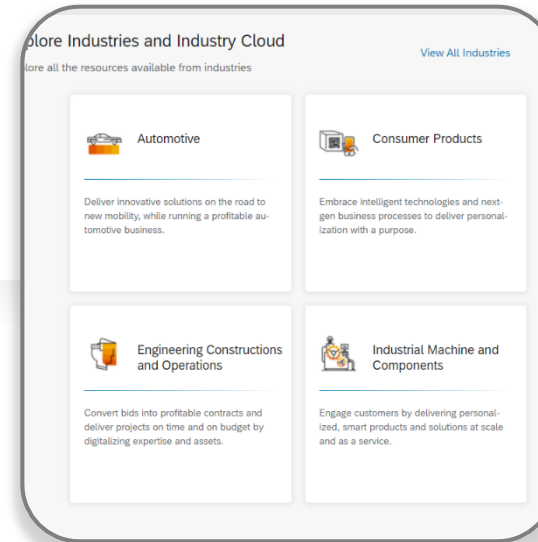
Central catalog: SAP API Business Hub @ api.sap.com



Public catalog
to discover and consume
prebuilt integrations and
connectors



Content categories
2.500+ Prebuilt integrations
3.000+ APIs
220+ Business events
170+ Connectors to third-party apps



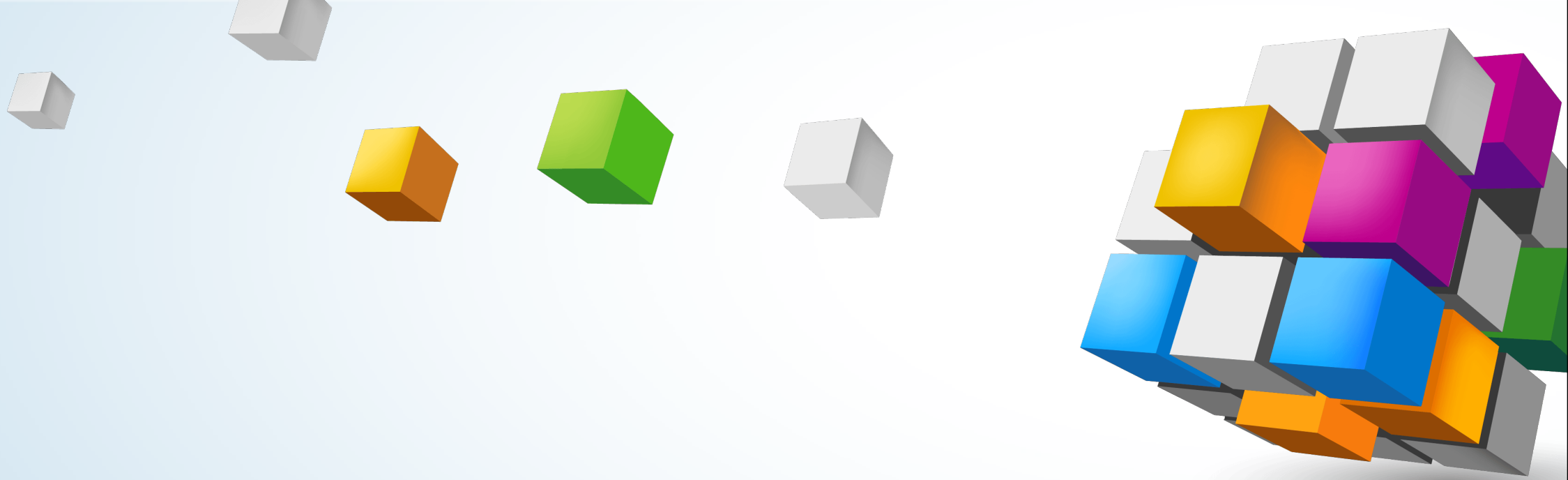
Content clustering
for easy navigation and
search, e.g. for **industry
clouds, communities**



Partners*
list and engage with
customers

Value = 5x acceleration, 10x savings

Administration, Operations, and IT Governance



Centralized monitoring of integration scenarios

End-to-end integration monitoring and alerting

- **Central view** for Ops teams on end-to-end integration scenarios bringing the technical message flow closer to the business context
- **Messages correlation** to an end-to-end message flow across cloud services and on-premise systems
- Reporting of **failed messages** and **deployment exceptions**
- **Tracking** messages based on business attributes
- **Alerting** with possibility to collaborate in a team during troubleshooting
- Personal **email notifications** or start operation flows on alerts

➔ Empowers to react to assure business continuity



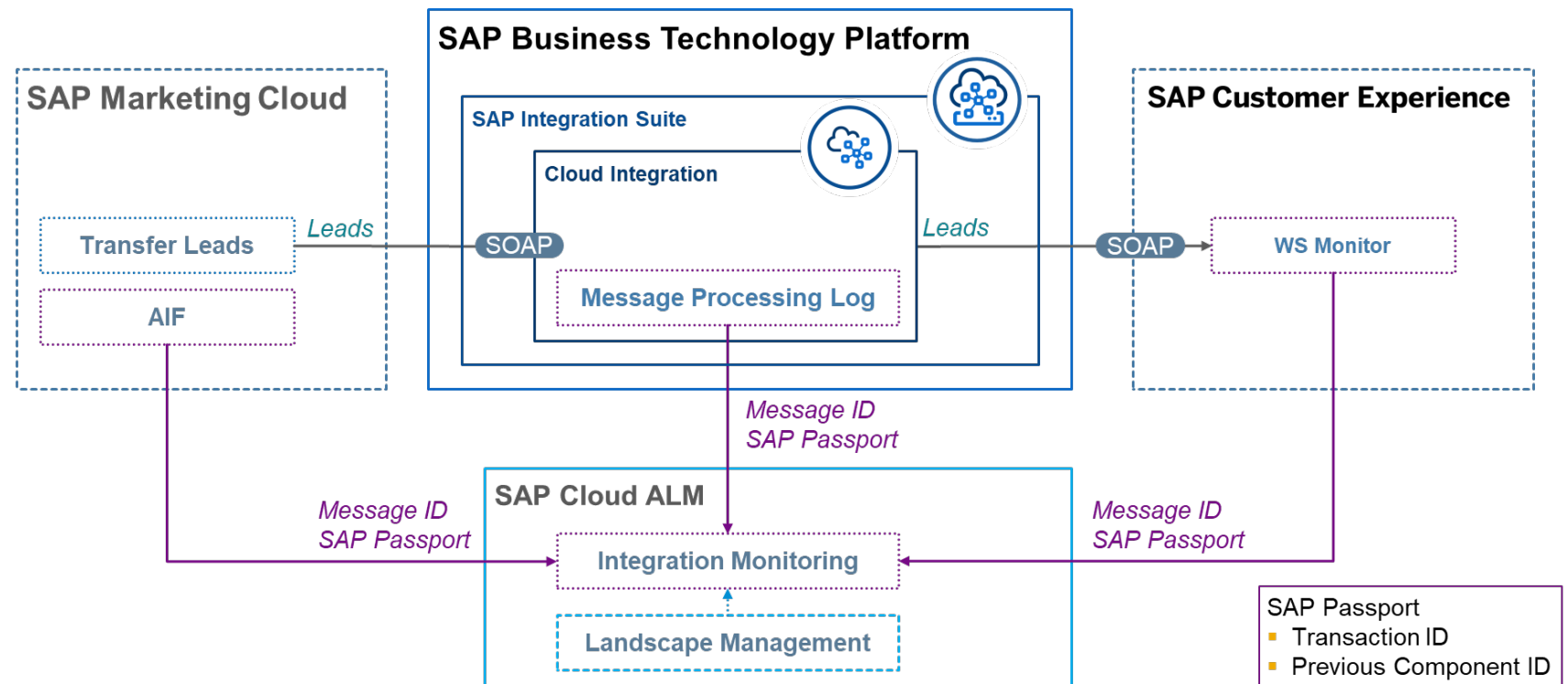
[Blog](#) | [Expert Portal](#)

The screenshot displays the SAP Integration & Exception Monitoring interface. At the top, the title bar shows 'SAP Integration & Exception Monitoring' with a 'Last Refresh' timestamp of 'Dec 19, 2021, 4:53:16 PM'. The main section is titled 'Monitoring' and shows a 'Time Frame' of '12/5/21, 4:53 PM - 12/19/21, 4:53 PM' and a 'Scenario' of 'Replicate_lead'. Below this, a 'Topology' view shows a message flow diagram with three components: 'S4hana.ondemand', 'CPI', and 'CAC'. Each component displays 'Duration' (0 Sec) and 'Messages' (1, 1, and 3 respectively). Below the topology, a table titled 'Related Messages (1)' shows a single message with ID 'AGG-FU1W5HHnCnbqKHJYTrLZvVOD', status 'COMPLETED', and service name 'SAP Integration Suite (Cloud Int...)'. The 'Message Details' section is expanded, showing 'Status Details' (COMPLETED) and 'Application Data' (CPI). A 'SAP Passport' pop-up window is visible in the foreground, displaying 'Transaction ID: 6248ED3D786102D0E0061BE09DF10000' and 'Previous Component: 000000000730438600'.

Centralized monitoring of integration scenarios

Correlation of single messages to achieve visibility in a message flow

- Single messages are correlated to each other
- SAP Passport mechanism leveraged
- End-to-end visibility in message flows across all involved cloud services and on-premise systems

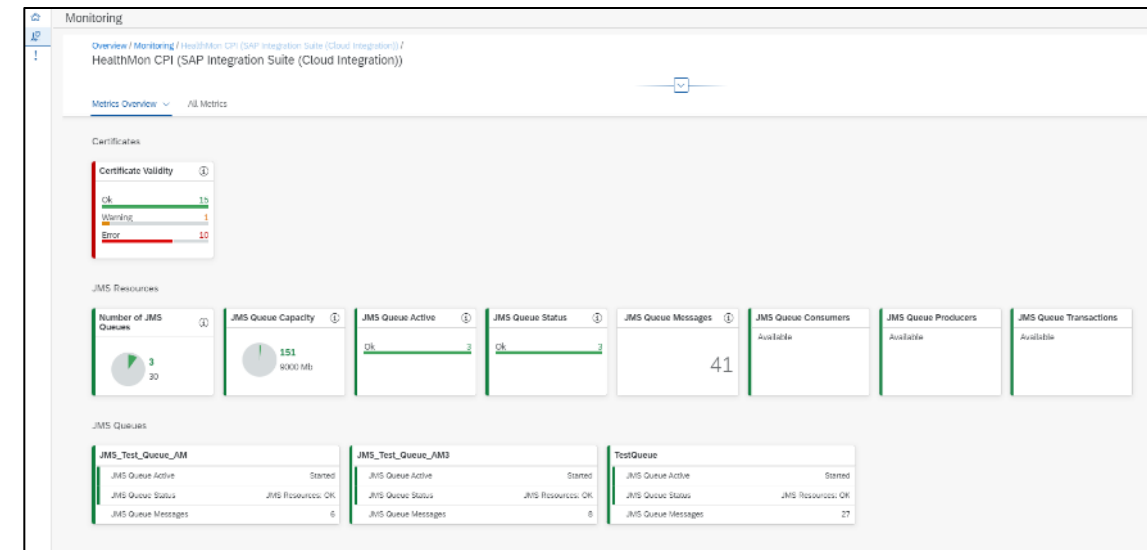
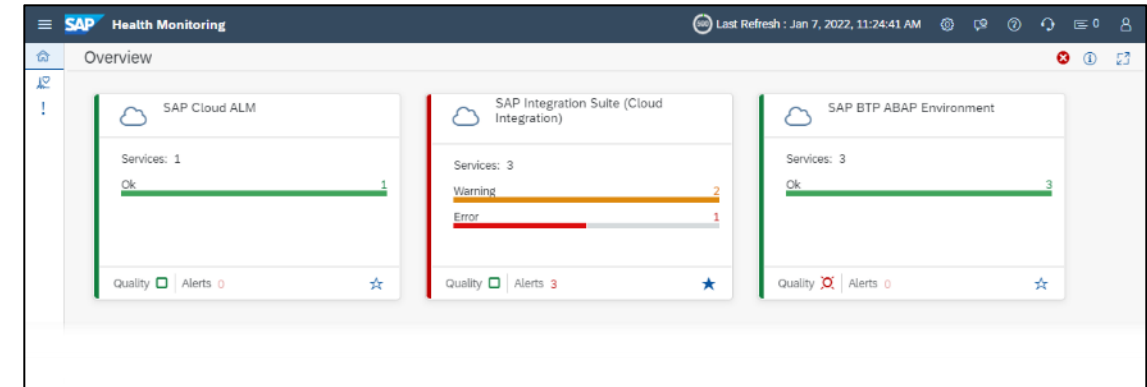


Example: A lead transfer is created in SAP Marketing Cloud, send to Cloud Integration further to the sales service for replication

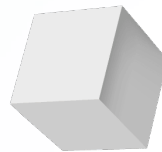
Centralized health monitoring using SAP Cloud ALM

Keep track on technical health state for Cloud Integration tenants

- **Central view** for Ops teams to get an overview of technical health state across all services
 - Several metrics available for
 - Exhaustion of **JMS resources**
 - Validity of **certificates** and **key pairs**
 - **Alerting** once a metric reaches the threshold
 - Threshold can be customized
 - Personal **email notifications** or start operation flows on alerts
- ➔ Empowers to react to assure business continuity



Key take aways



SAP is a leader in integration!

Leading Vision

- **Versatile and enterprise-grade integration platform** covering all integration styles and patterns
- **2.500+ out-of-box integrations** to accelerate integration projects
- **Fully vendor managed multi-cloud service**

Execution for customer success

- **20+ years of experience** in providing ubiquitous, enterprise-grade integration platform
- **Customers** leverage SAP Integration Suite in creating connected experiences (A2A, B2B, B2G, API, events, ...) driving their digital transformation across industries globally
- **SAP Integration Suite** is the foundation layer for all SAP LoB applications to build an intelligent enterprise
- Recognized as **Leader** in Gartner's Magic Quadrant 2021 for Enterprise Integration Platform as a Service
- **Fastest growing market share** in customer acquisition as well as overall revenue

*Planned for Q4 2021, subject to change



Start today

with SAP Integration Suite

EXPLORE

[sap.com](#) | [Video](#) | [Infographic](#) | [Solution in Detail](#) | [Service Description](#)
| [Roadmap](#)

GET STARTED

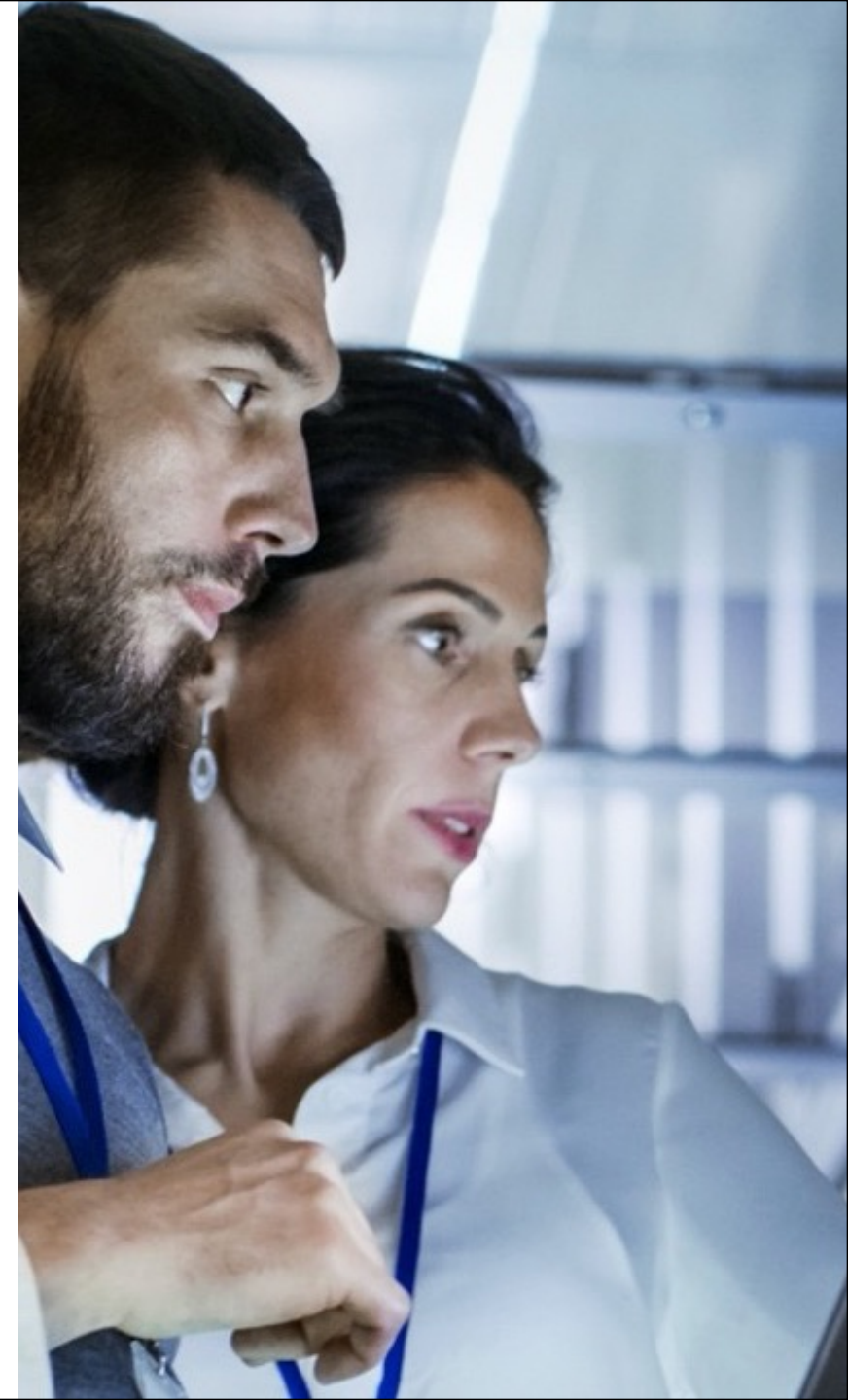
[SAP's integration strategy](#) | [ISA-M at sap.com](#) | [Discovery Center Missions](#) | [Tutorial Starter Scenario](#)

LEARN

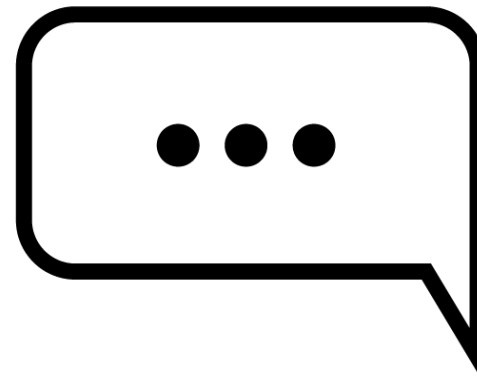
[Webinars on key technologies](#) | [SAP Community](#) | [Blogs](#) | [SAP Help](#) | [Learning Journey](#) | [openSAP Course](#) | [Book](#)

INTEGRATION PACKS

[SAP API Business Hub @ api.sap.com](#)



Q



A

Thank you.

Follow us



www.sap.com/contactsap

© 2019 SAP SE or an SAP affiliate company. All rights reserved.

No part of this publication may be reproduced or transmitted in any form or for any purpose without the express permission of SAP SE or an SAP affiliate company.

The information contained herein may be changed without prior notice. Some software products marketed by SAP SE and its distributors contain proprietary software components of other software vendors. National product specifications may vary.

These materials are provided by SAP SE or an SAP affiliate company for informational purposes only, without representation or warranty of any kind, and SAP or its affiliated companies shall not be liable for errors or omissions with respect to the materials. The only warranties for SAP or SAP affiliate company products and services are those that are set forth in the express warranty statements accompanying such products and services, if any. Nothing herein should be construed as constituting an additional warranty.

In particular, SAP SE or its affiliated companies have no obligation to pursue any course of business outlined in this document or any related presentation, or to develop or release any functionality mentioned therein. This document, or any related presentation, and SAP SE's or its affiliated companies' strategy and possible future developments, products, and/or platforms, directions, and functionality are all subject to change and may be changed by SAP SE or its affiliated companies at any time for any reason without notice. The information in this document is not a commitment, promise, or legal obligation to deliver any material, code, or functionality. All forward-looking statements are subject to various risks and uncertainties that could cause actual results to differ materially from expectations. Readers are cautioned not to place undue reliance on these forward-looking statements, and they should not be relied upon in making purchasing decisions.

SAP and other SAP products and services mentioned herein as well as their respective logos are trademarks or registered trademarks of SAP SE (or an SAP affiliate company) in Germany and other countries. All other product and service names mentioned are the trademarks of their respective companies.

See www.sap.com/copyright for additional trademark information and notices.