

SAP ANALYTICS CLOUD

Smart Predict & Predictive Planning

Jay Xiong, SAP
January 18th, 2023

PUBLIC

THE BEST RUN **SAP**



F. Hoffmann–La Roche AG

Powering Predictive Financial Forecasts with SAP Analytics Cloud

2

Hours to generate a CHF 4 billion financial forecast vs **several weeks** involving 30 Finance resources

7%

Improvement in forecast accuracy using **predictive planning** vs manual process

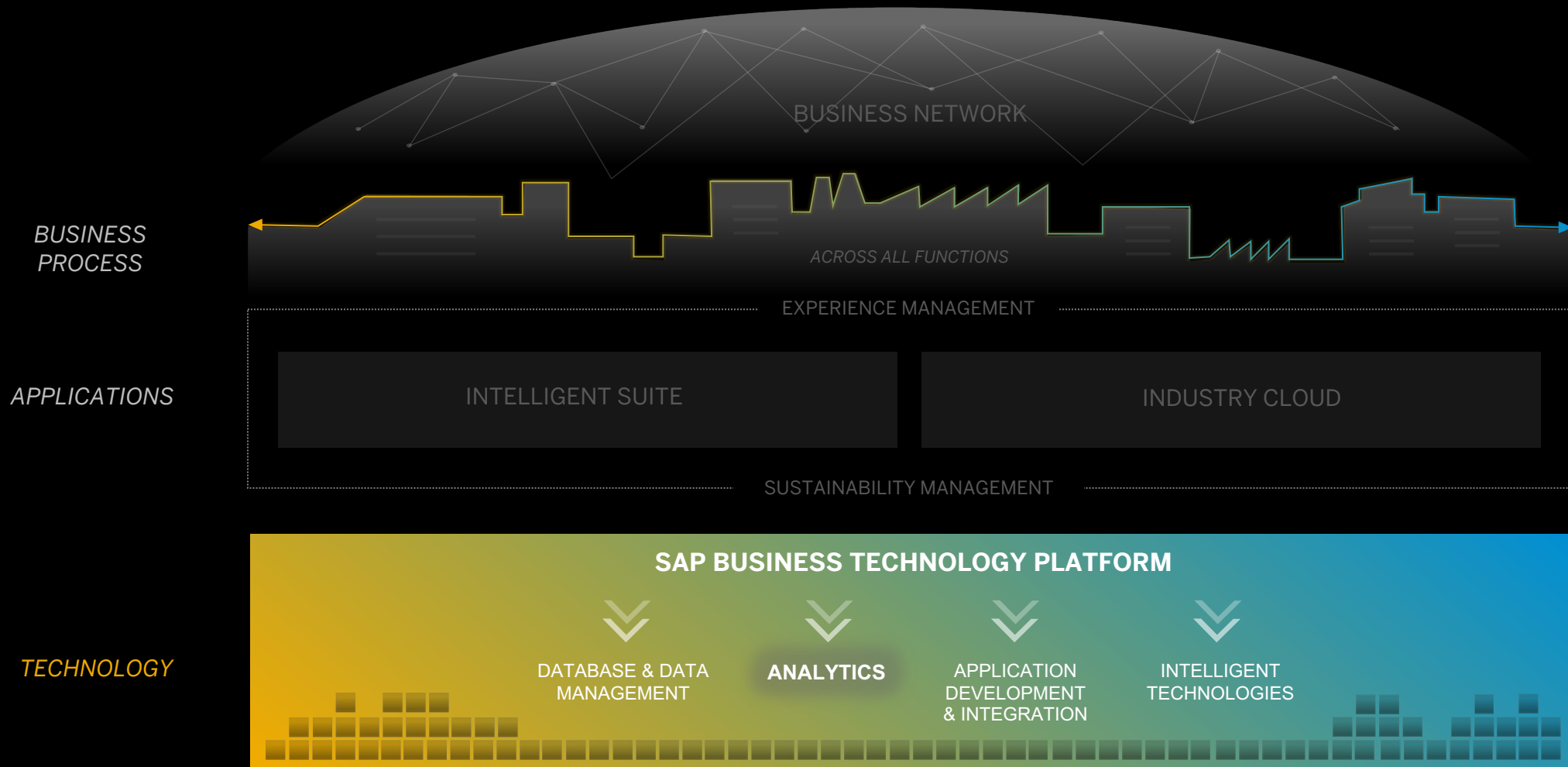
14k

forecast **entry data points now automated** with SAP Analytics Cloud (out of 20k)

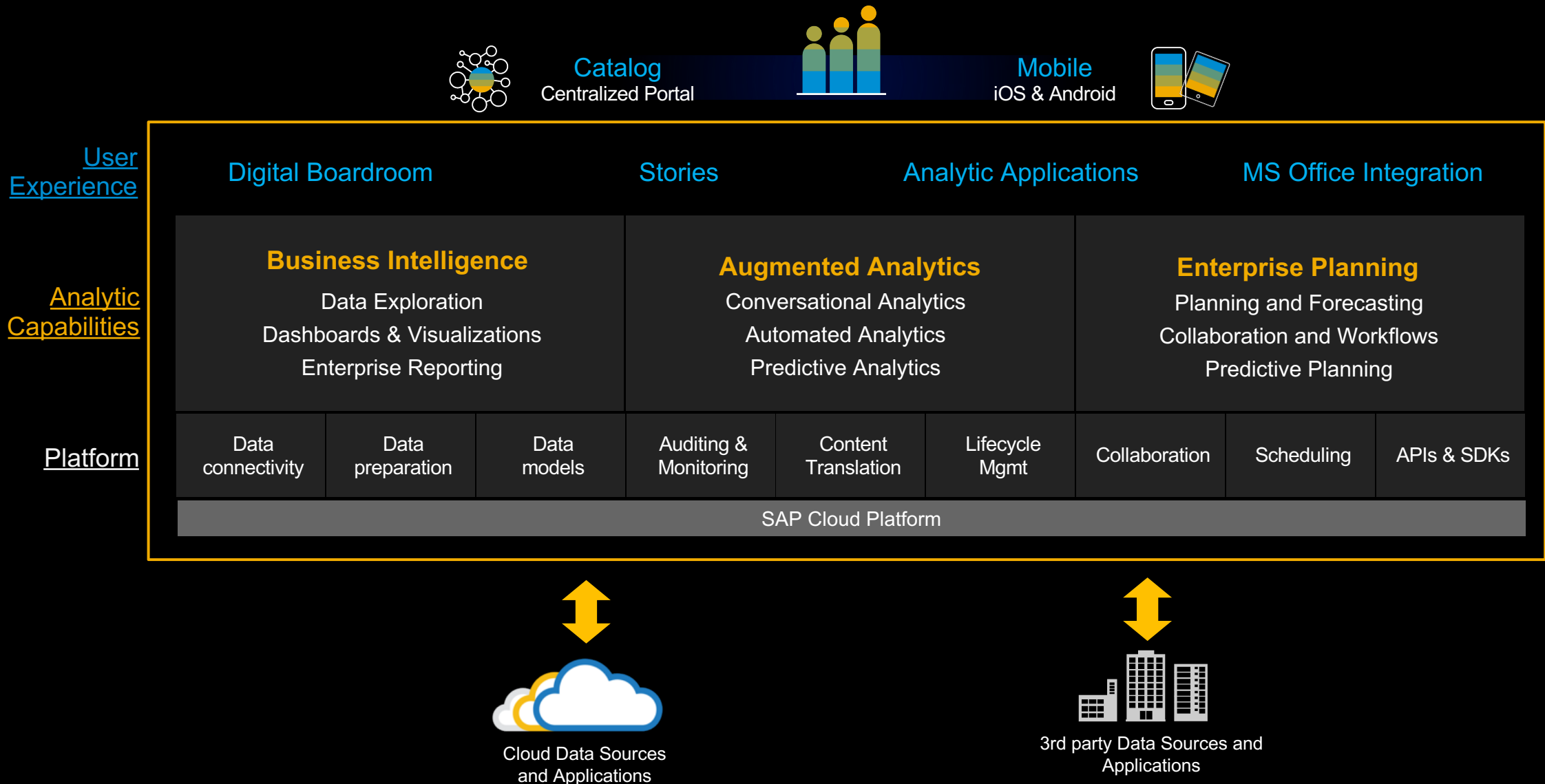
“Our 10-year ambition requires a radical shift in the way we work. I am excited to see Finance at the **forefront of this digital transformation.**”

Alan Hippe
Chief Financial and IT Officer

The Platform for the Intelligent Enterprise



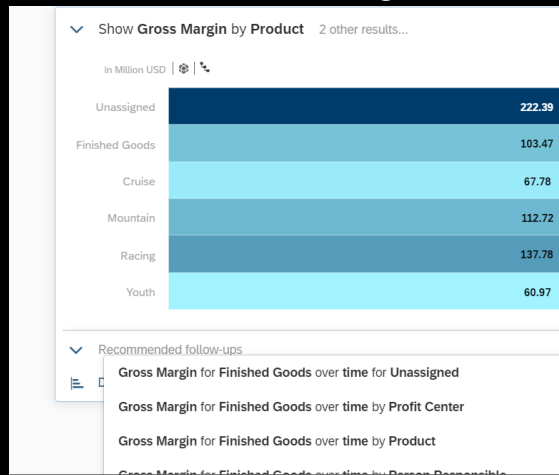
SAP Analytics Cloud



Augmented Analytics

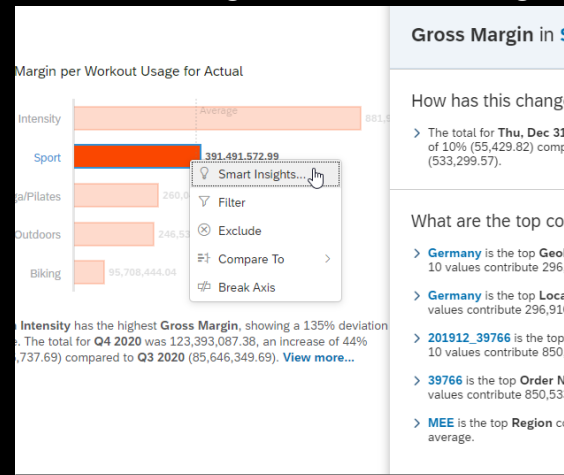
Make smarter and faster decisions with automated insights powered by machine learning

Conversational Search to Insight



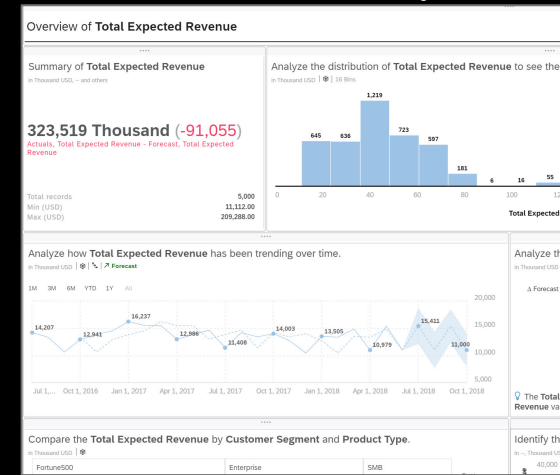
Ask questions conversationally and SAP Analytics Cloud finds and visualizes your answers

Automated Insights Smart Insights & Forecasting



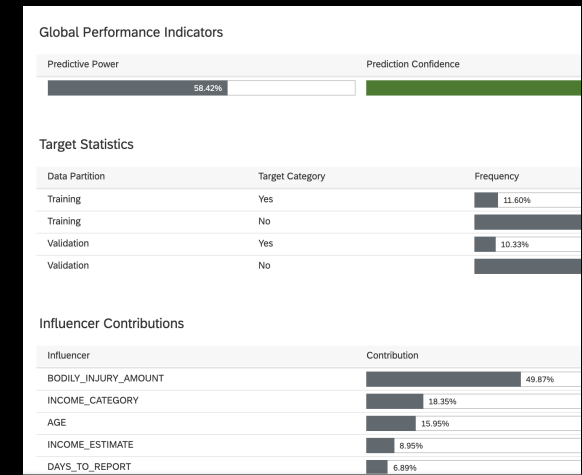
Automatically add forecasts and find top influencers in your data, shown in natural language

Automated Discovery Smart Discovery



Automatically generate stories that reveals trends, relationships, patterns, and outliers in your data

Predictive Analytics Smart Predict



Run regression and classification scenarios, and generate forecasts without data scientists

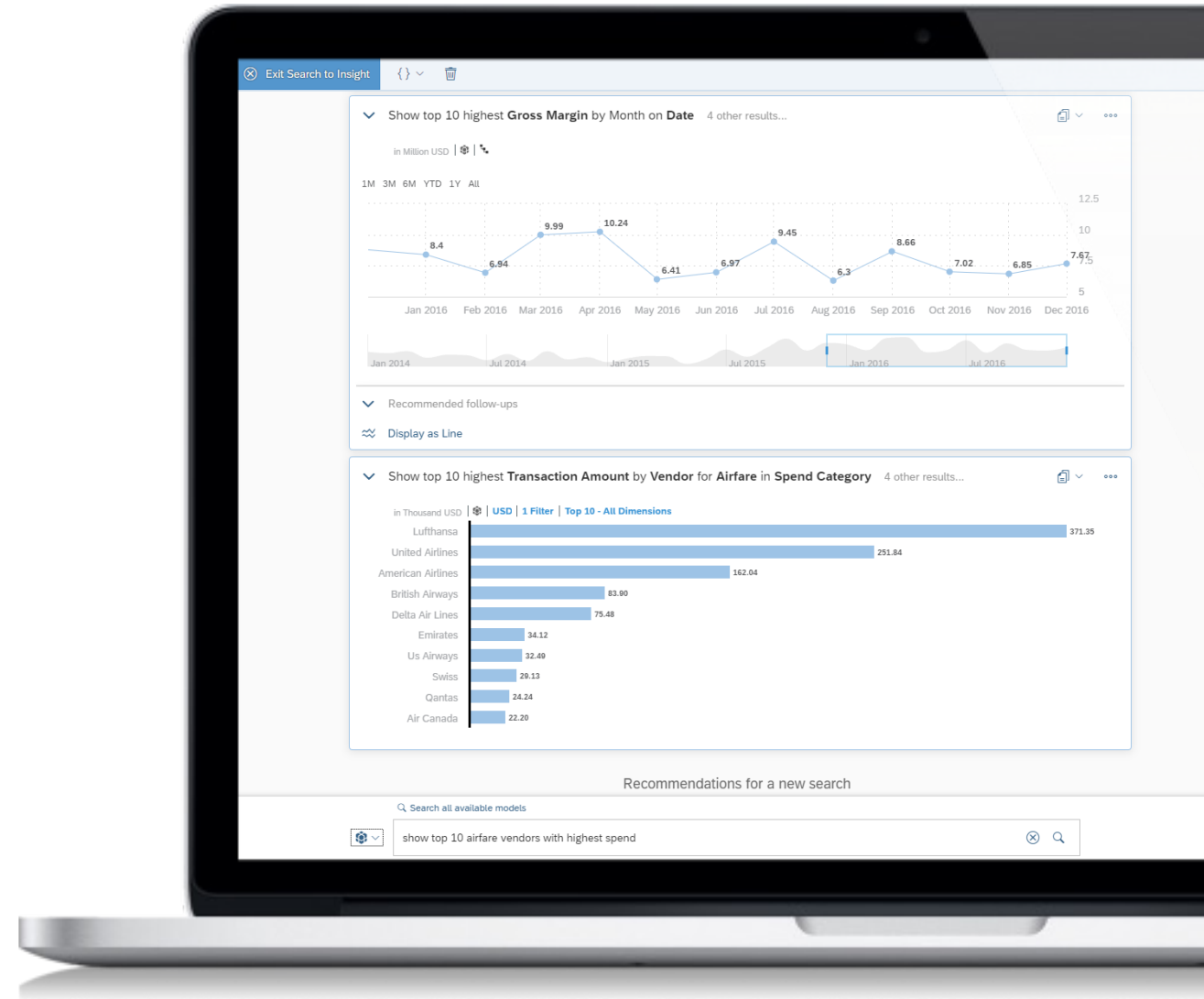
Information Worker

Citizen Data Scientist

Search to Insight

Save time and get answers quickly, by asking questions of your data in natural language

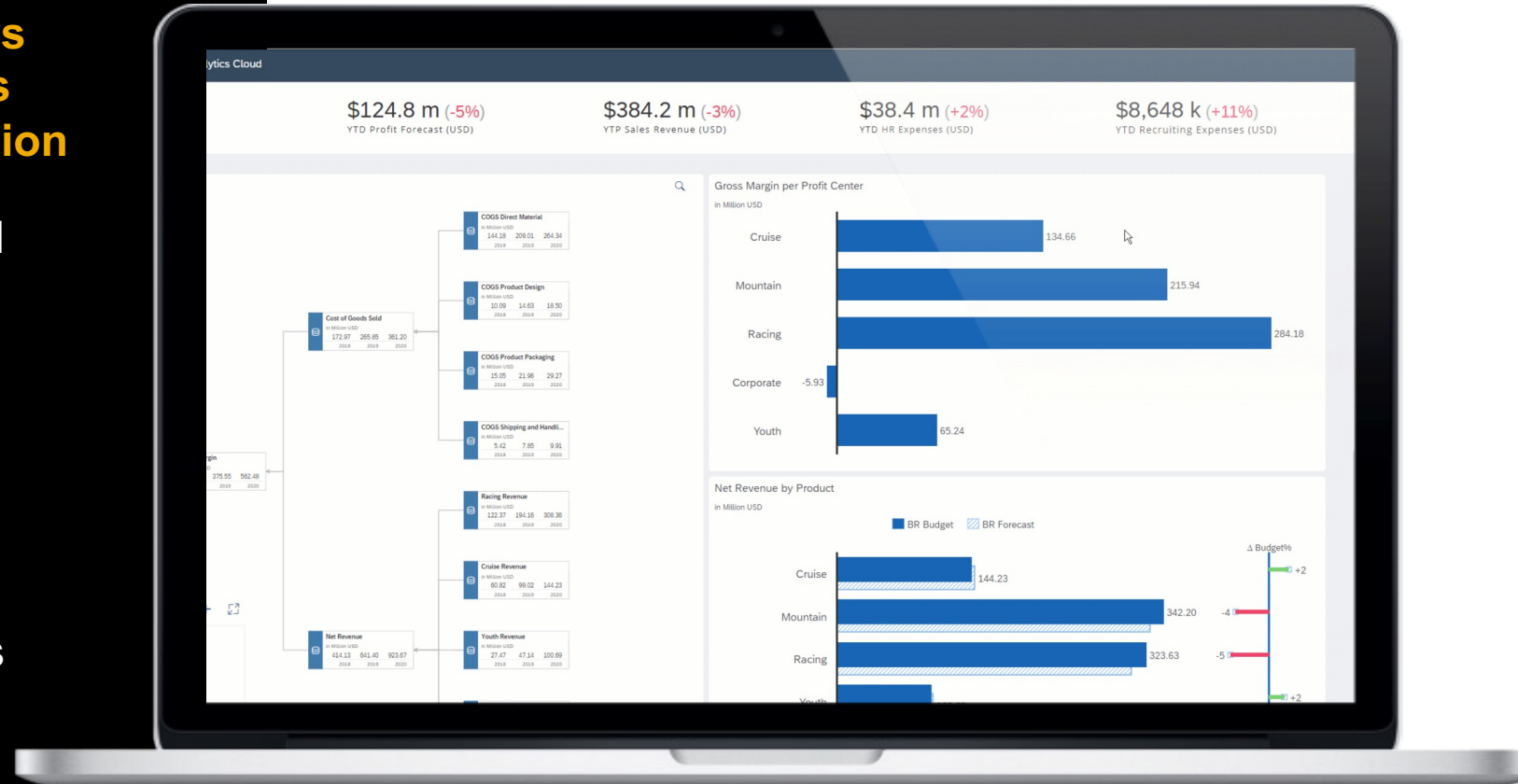
- Leverages natural language processing to interpret and understand your question – “top”, “last year”, “below”, etc.
- Searches through metadata of all indexed data models (live and acquired) and proposes closest results
- No extra configuration required; administrators can select dimensions to index and then click to index



Smart Insights

Get immediate insights into the whys of your data without spending hours manually investigating each dimension

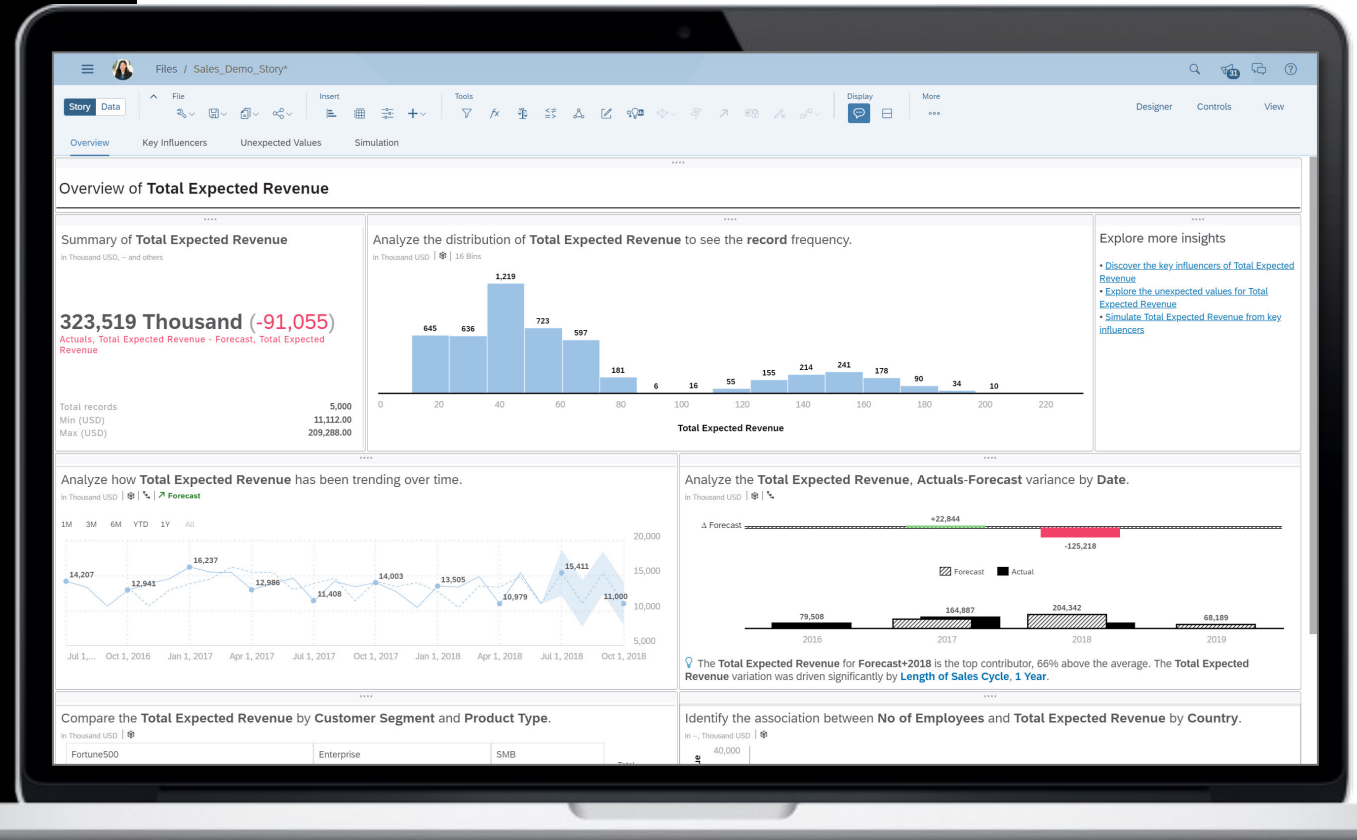
- Understand the top contributors and influencers of a selected data or variance point
- Insights are displayed in natural language along with visualizations
- Display insights on chart footers to provide more context for consumers



Smart Discovery

Leverage machine learning algorithms to automatically reveal hidden patterns and correlations in your data

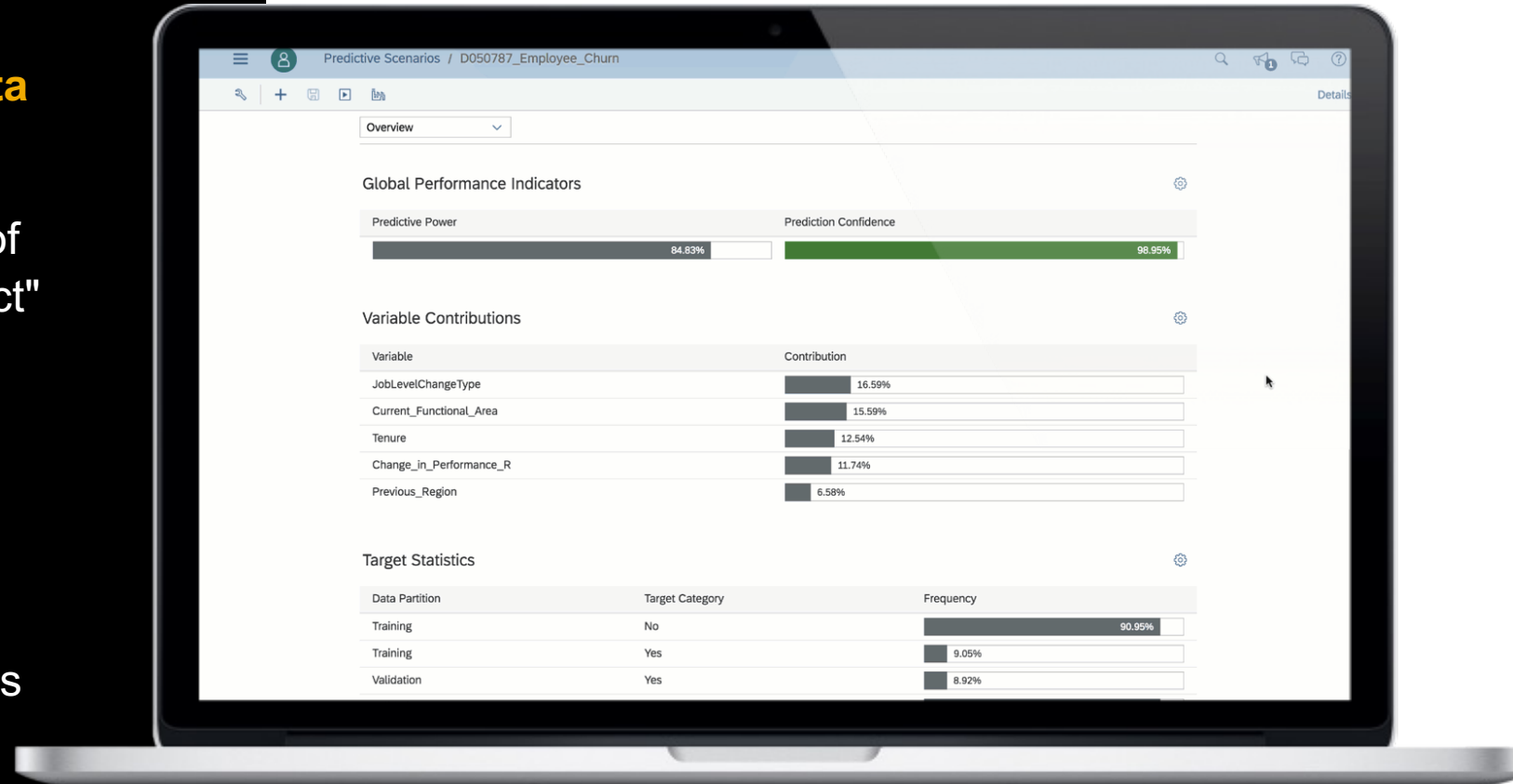
- Auto-generates a dashboard filled with ML-driven insights
- Uncovers meaningful insights such as detected patterns, key influencers, outliers, data distribution and more
- Use interactive what-if simulation to evaluate the impact of strategic changes



Smart Predict

Build trusted and actionable predictions without the help of a data scientist

- Classification: "Create a sorted list of prospects to focus on for this product"
- Regression: "Give me revenue estimates for each customer for the next 6 months"
- Time Series: "Forecast revenue for each product and each point of sales daily for the next 30 days"



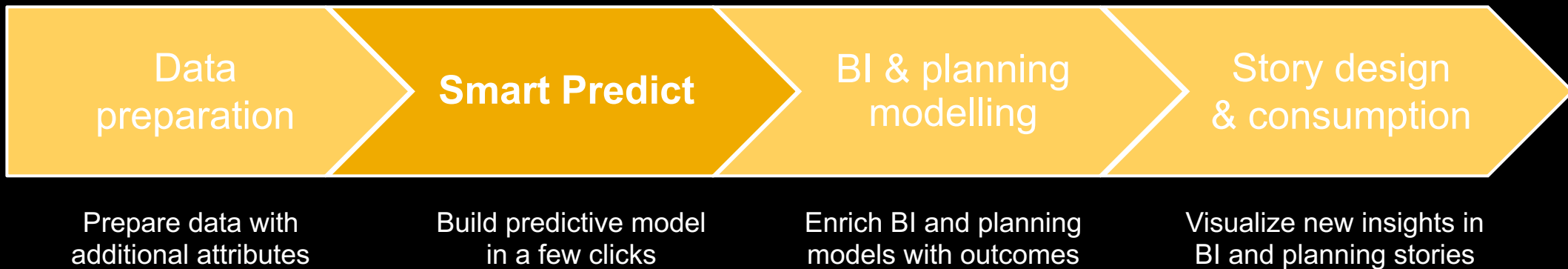
Enrich your BI and Planning Information Assets

Smart Predict in BI and planning workflows

Traditional Analytics



Augmented Analytics with Smart Predict



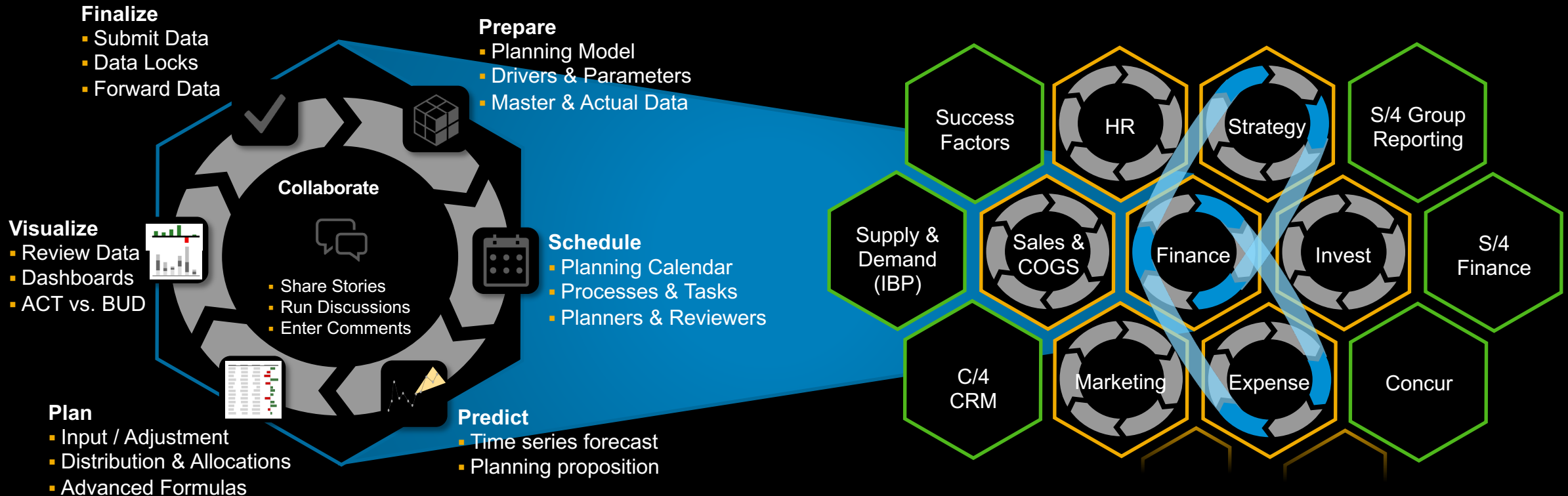
Time Series Forecasting

Predict future values of a series based on historical data to help you make more confident decisions

- Automatic forecasting on time series charts, line charts and planning tables
- Apply advanced options like linear regression, triple exponential smoothing and include additional inputs
- Forecast quality based on MAPE



Extended Planning & Analysis (xP&A)



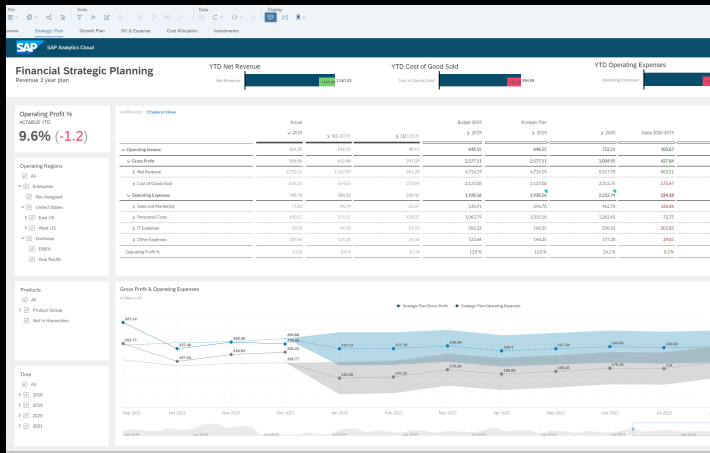
1 Strong planning capabilities to create powerful planning solutions within the company

2 Link operational and financial planning to improve alignment and performance

3 Integrate with enterprise applications for one source of the truth

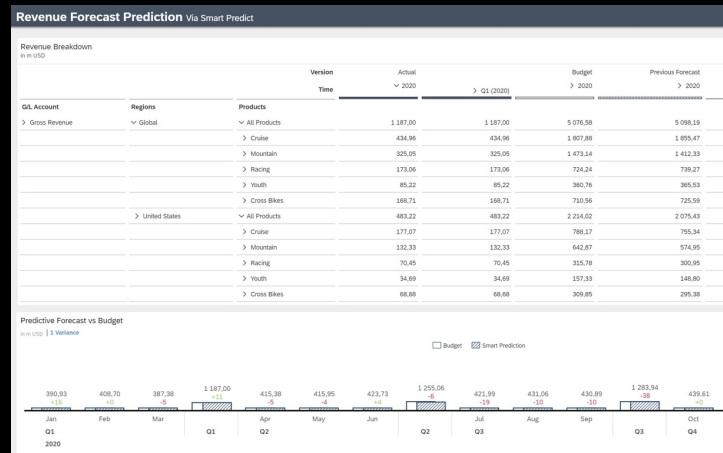
Enterprise Planning

Analyze, predict and plan in one application to reduce errors and increase organizational agility



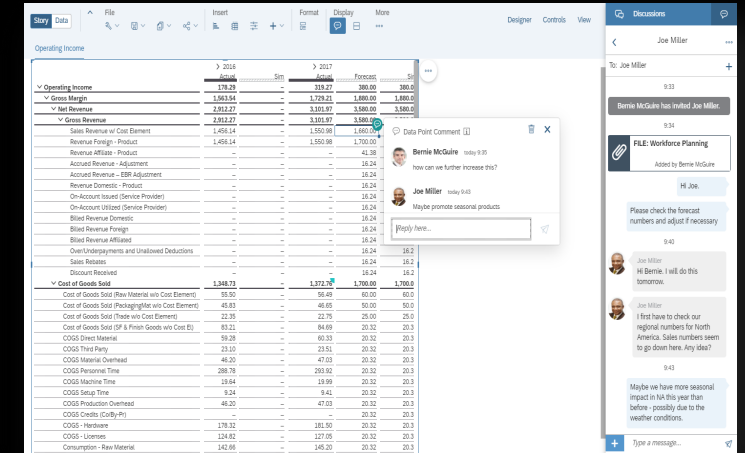
Budgeting and forecasting

Create and modify versions of a planning model for data-driven budgeting, forecasting, and analysis from one cloud interface



Predictive planning

Automate data-driven enterprise planning and accelerate planning cycles with time series forecasting thanks to a tight integration between Smart Predict and Planning



Collaborative planning

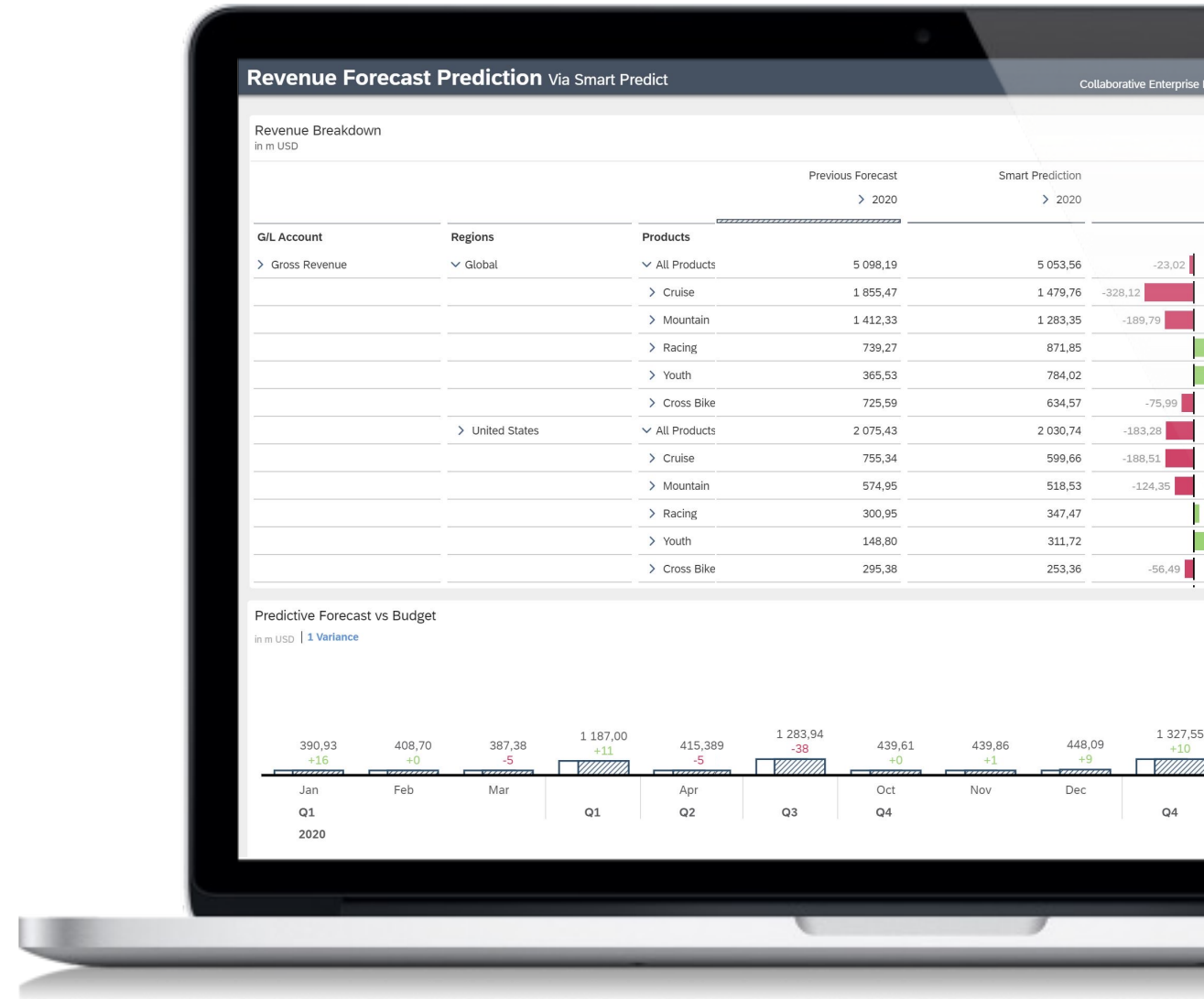
Plan across all lines of business to turn real-time insight into action, ensure strategic alignment, and decide confidently

Predictive Planning

Combine the power of planning and predictive forecasting to accelerate planning cycles

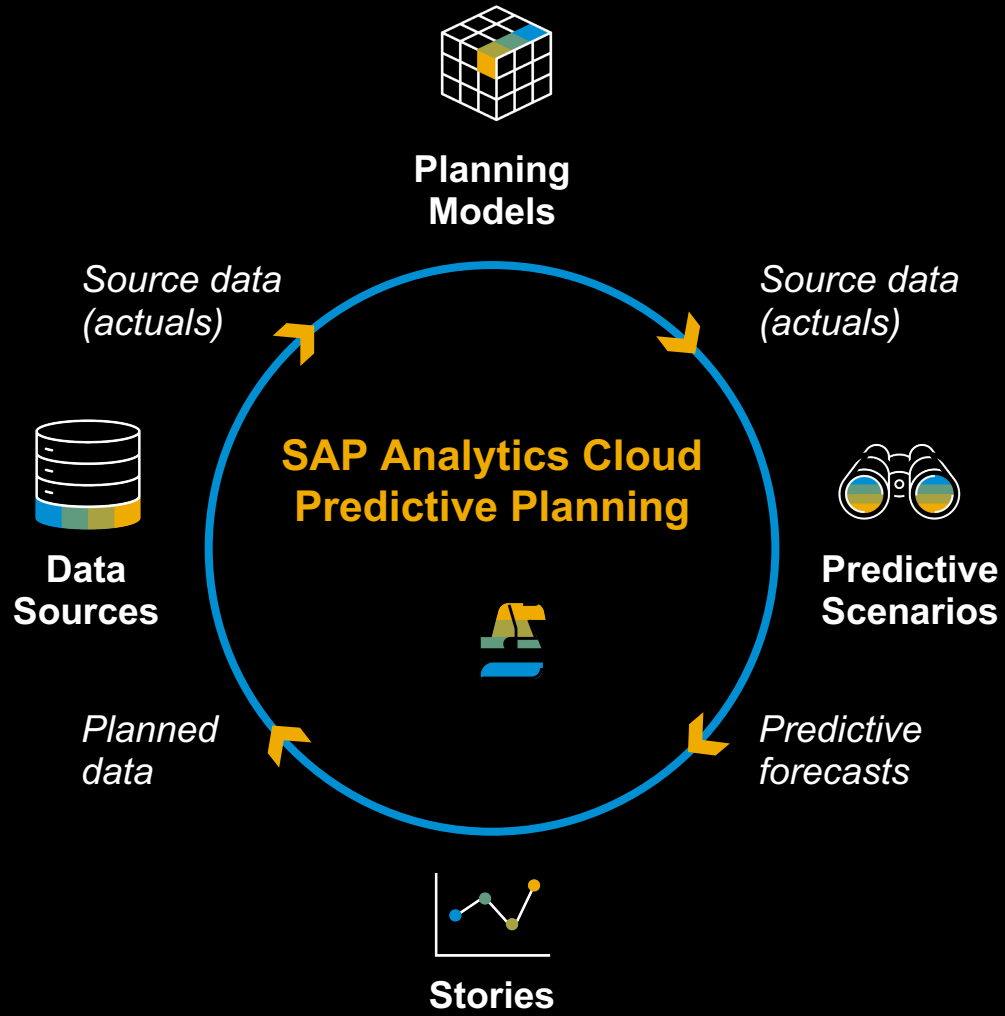
- Planners generate accurate forecasts on top of actuals to accelerate their day-to-day planning activities
- Add predictive forecasts back to planning models to support data-driven business decisions
- All without the need for machine learning expertise

[Video](#) [Blog](#)



Predictive Planning

An integrated, end-to-end experience



- Historical data is brought to planning models from the source systems.
- Predictive scenarios (time series forecasting models) are created on top of planning models, up to 1000 predictive models at a time.
- Predictive forecasts are persisted into private versions. They can be promoted as public versions to expose the forecasts to wider planner groups.
- Stories can include predictive forecasts side by side with the actuals, plans, and budgets.
- Beyond SAP Analytics Cloud it is possible to export data back to data sources like SAP BW, SAP S/4HANA or SAP HANA.

Thank you

[SAP Analytics Cloud](#)

[Visit the Community](#)

[Explore our Roadmap](#)

[Try for Free](#)

[Get Started](#)

