



The SAP BTP Universe in a Nutshell - Analytics

Orla Cullen
Solution Manager Planning & Analytics

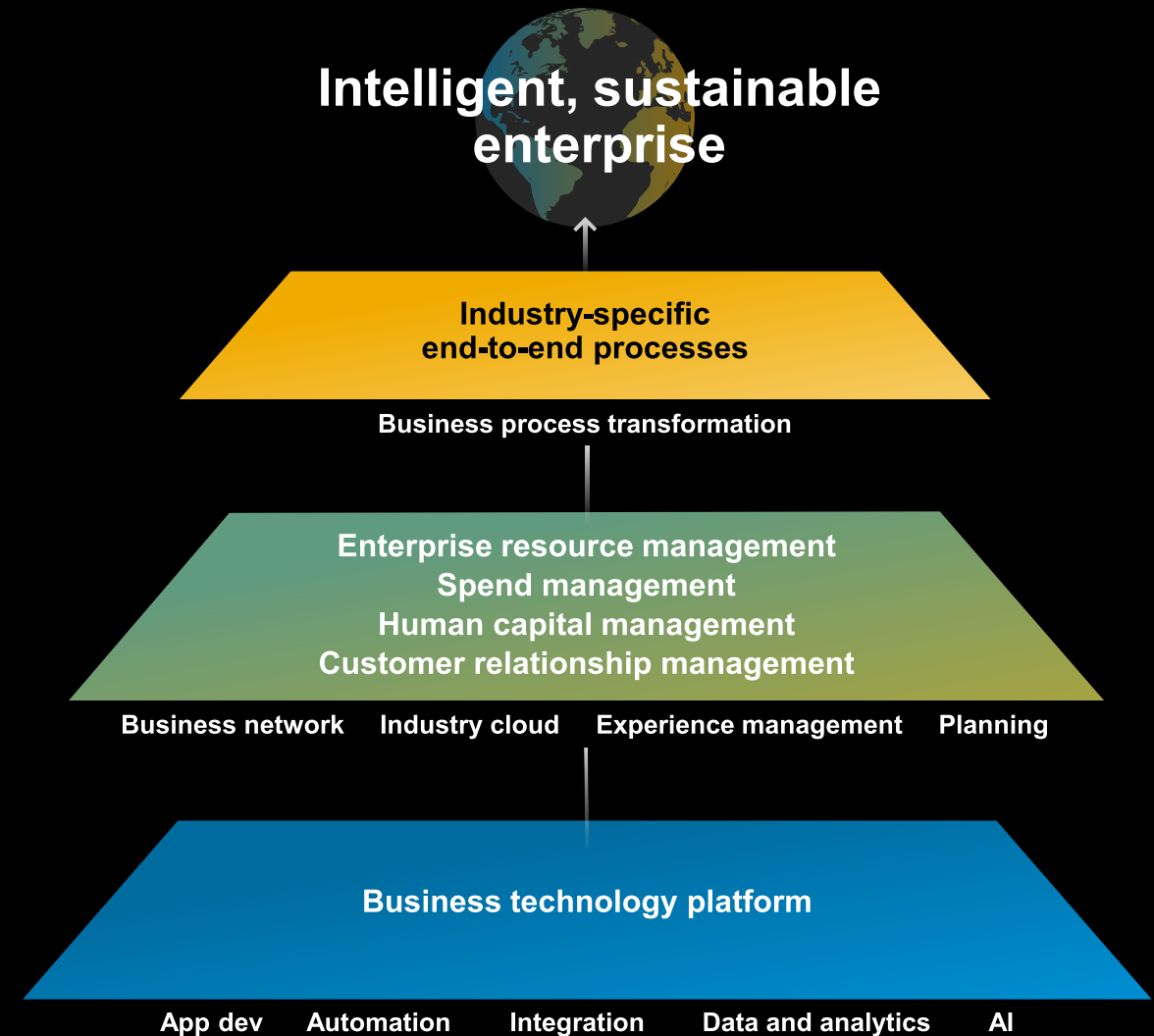
PUBLIC

Legal Disclaimer

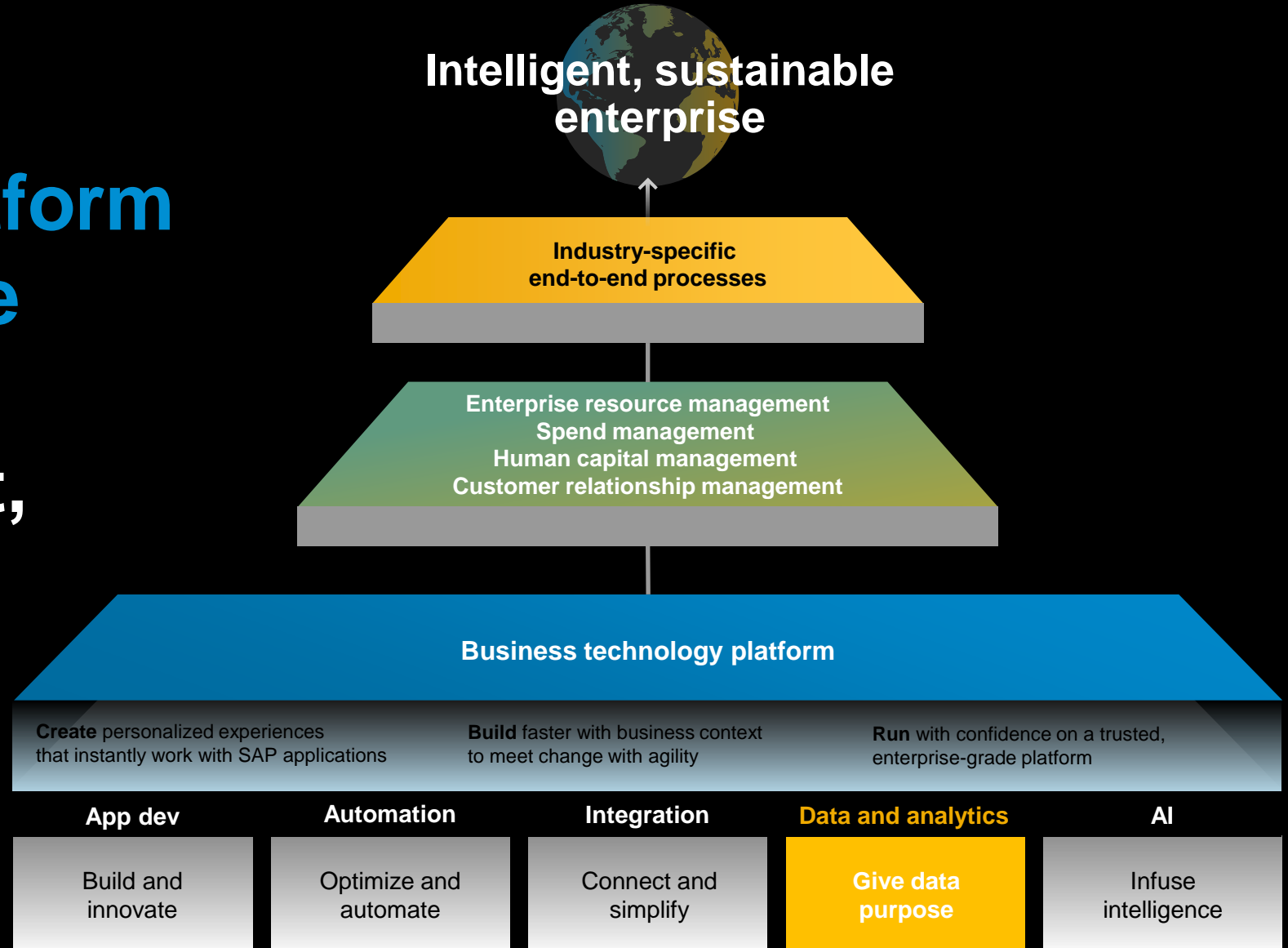
The information in this presentation is confidential and proprietary to SAP and may not be disclosed without the permission of SAP. This presentation is not subject to your license agreement or any other service or subscription agreement with SAP. SAP has no obligation to pursue any course of business outlined in this document or any related presentation, or to develop or release any functionality mentioned therein. This document, or any related presentations and **SAP's strategy and possible future developments, products and or platforms directions and functionality are all subject to change and may be changed by SAP at any time for any reason without notice.** The information in this document is not a commitment, promise or legal obligation to deliver any material, code or functionality. This document is provided without a warranty of any kind, either express or implied, including but not limited to, the implied warranties of merchantability, fitness for a particular purpose, or non-infringement. This document is for informational purposes and may not be incorporated into a contract. SAP assumed no responsibility for errors or omissions in this document, except if such damages were caused by SAP's willful misconduct or gross negligence.

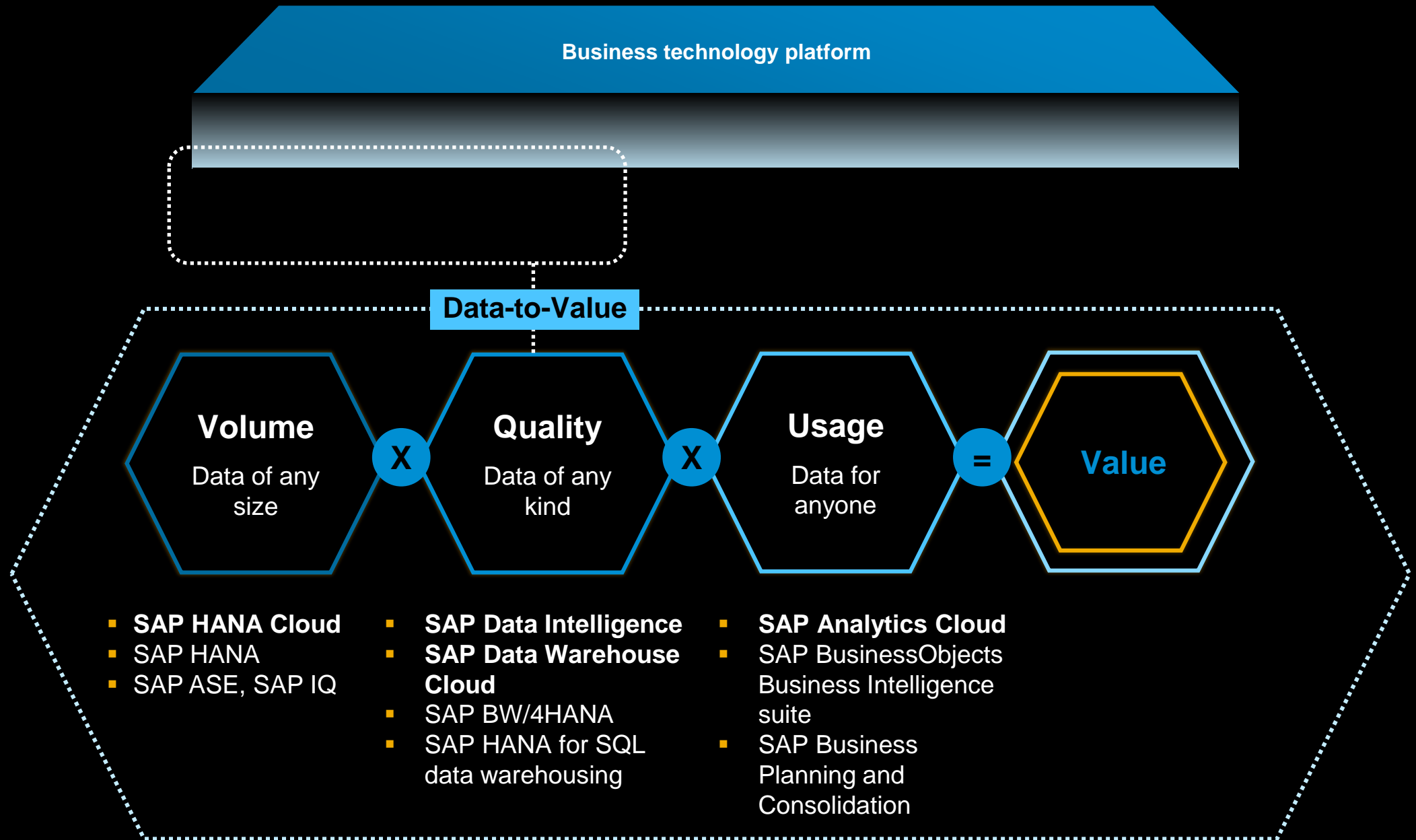
All forward-looking statements are subject to various risks and uncertainties that could cause actual results to differ materially from expectations. Readers are cautioned not to place undue reliance on these forward-looking statements, which speak only as of their dates, and they should not be relied upon in making purchasing decisions.

Enable every enterprise
to become an **intelligent,
sustainable enterprise**

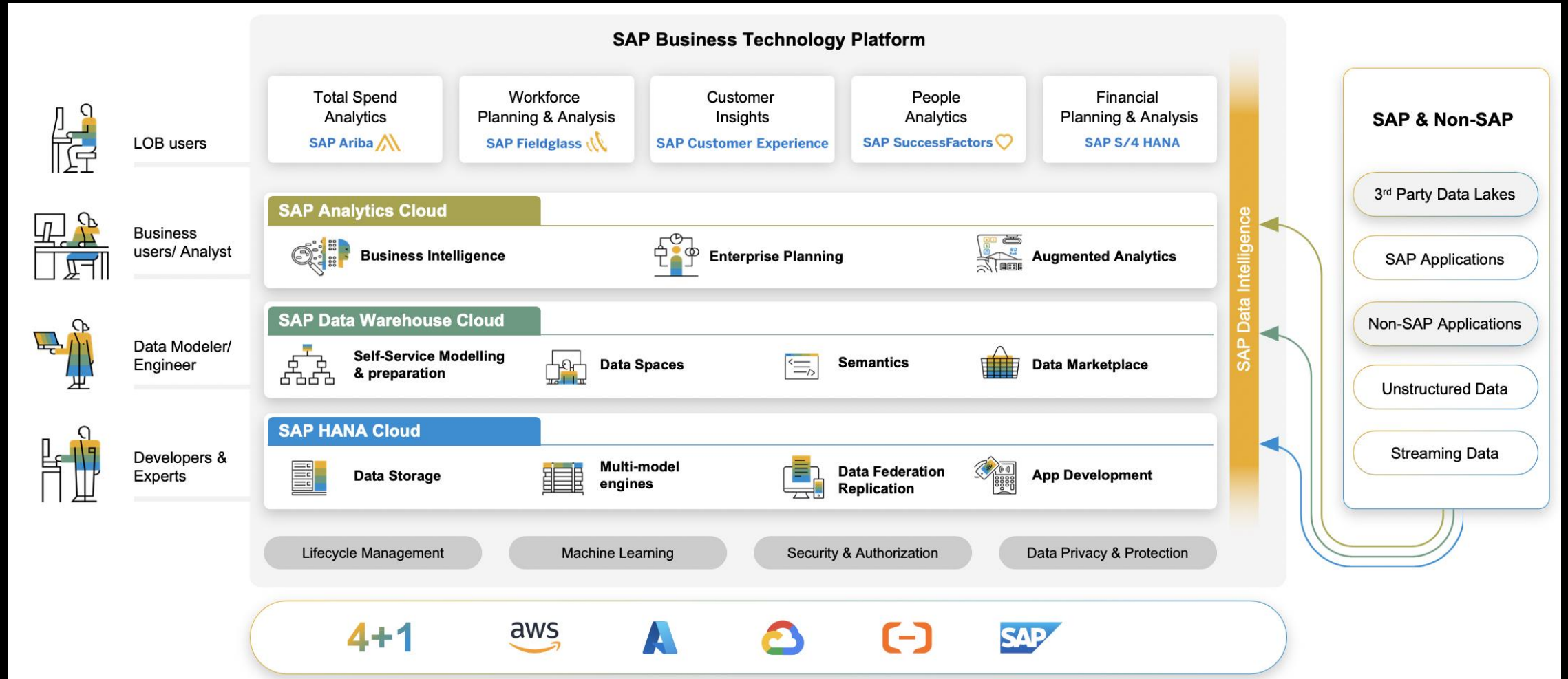


SAP Business Technology Platform (SAP BTP) is the foundation of the intelligent, sustainable enterprise

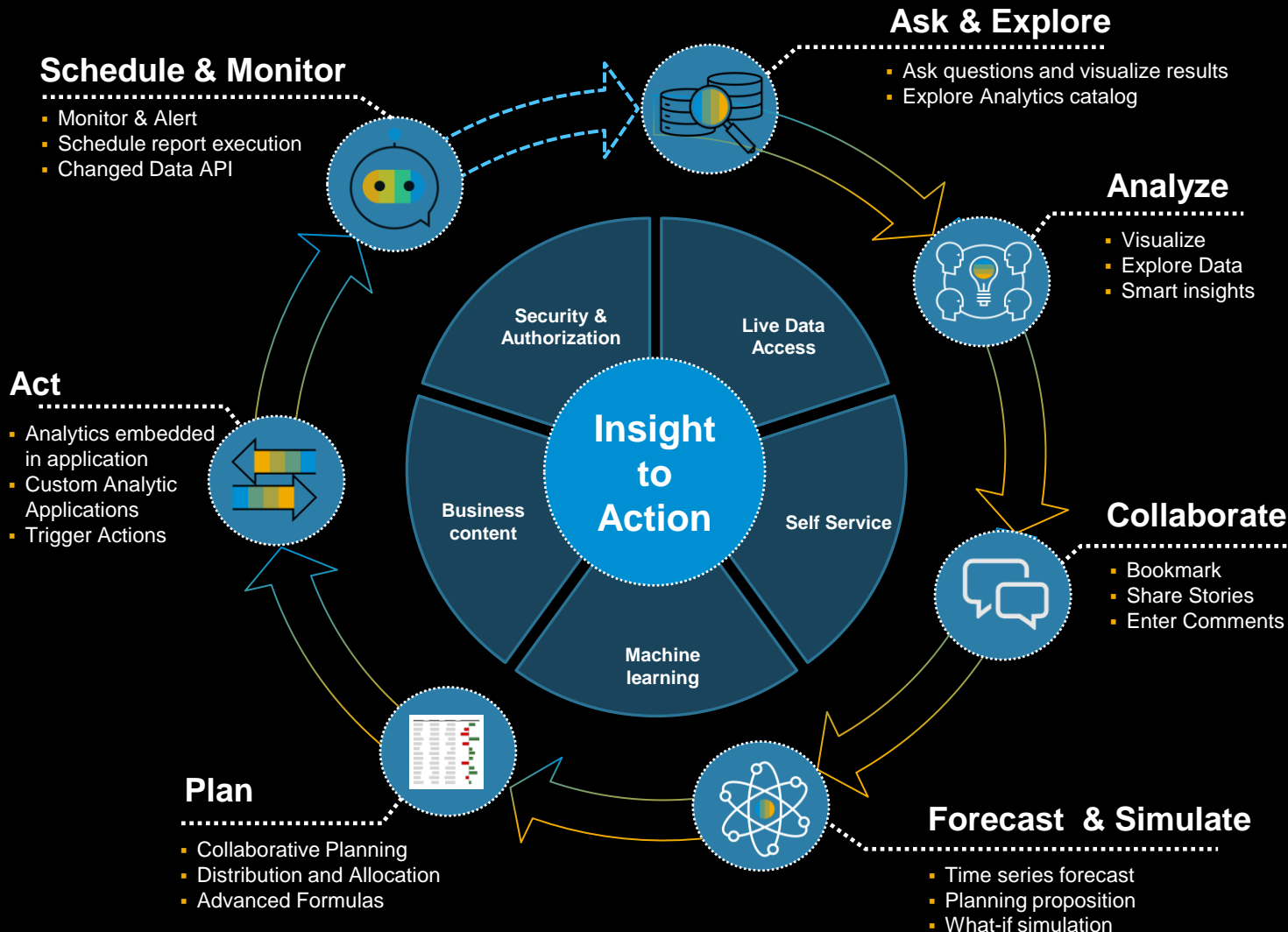




Data and analytics solutions as foundational elements of SAP BTP



Support closed-loop decision making SAP data and analytics solutions



- Increase agility with analytics and planning in one solution
- Utilize the full context of real-time SAP data
- Deliver high-performance analytics at scale
- Automate insights with machine learning
- Quickly compose specialized analytic apps
- Deliver analytics closer to the point of decision
- Connect financial and operational plans seamlessly integrated with SAP applications

SAP Analytics Cloud



Decisions without Doubt



SAP Analytics Cloud

Drive agile decisions



- Instantly move from insight to action
- Simulate any scenario for better outcomes
- Automatically generate plans from predictions

Derive unique insights



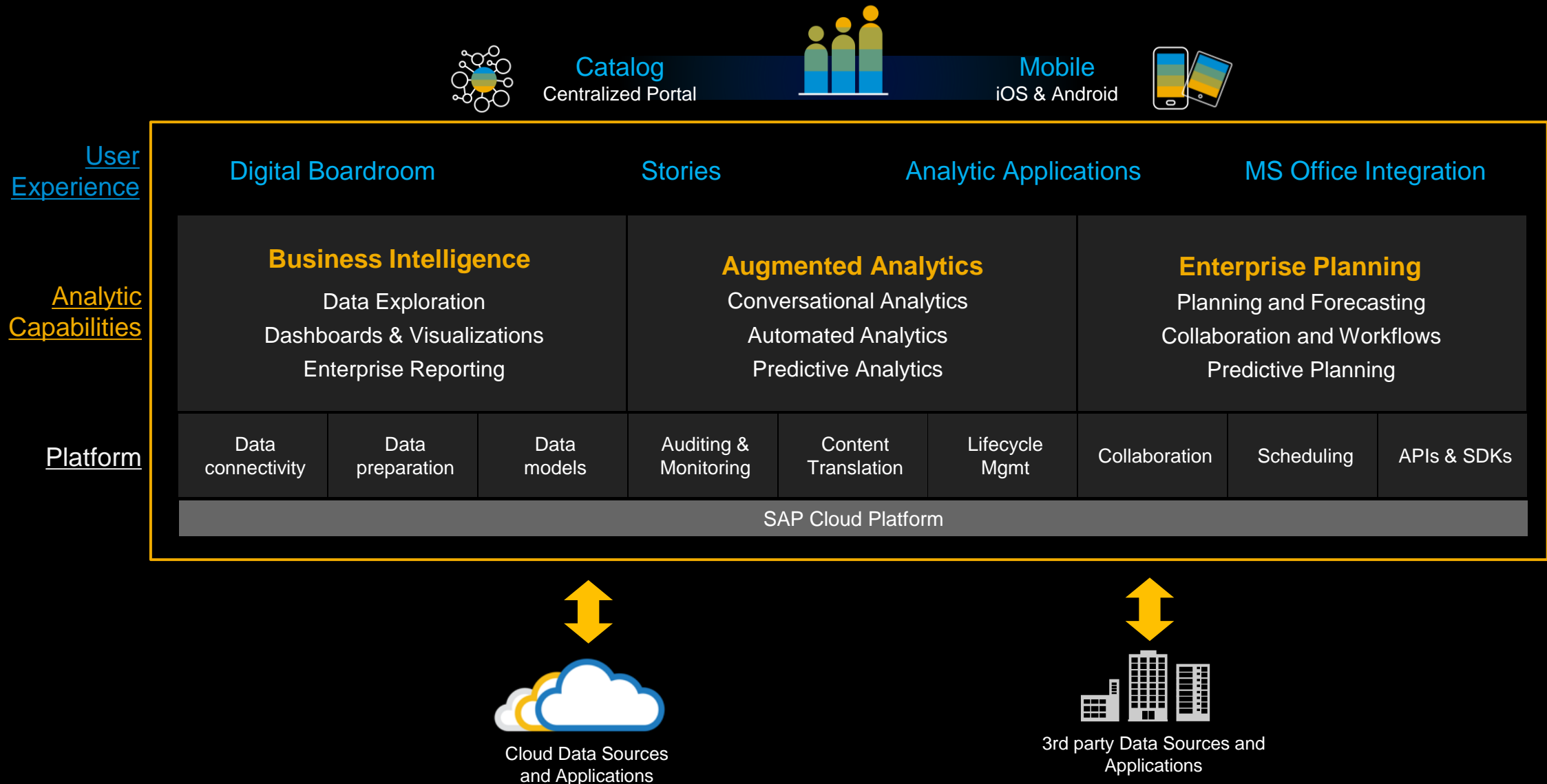
- Utilize the full context of SAP data
- Bring analytics closer to the point of decision
- Accelerate projects with prebuilt SAP business content

Create bleeding edge analytics



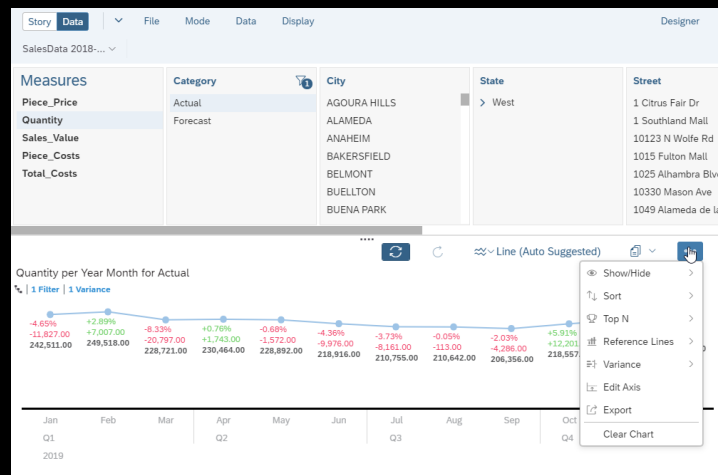
- Automate insights with machine learning
- Quickly compose specialized analytics apps
- Deliver high-performance analytics at scale

SAP Analytics Cloud



Business Intelligence

Empower business users and analysts with the agility of self-service BI



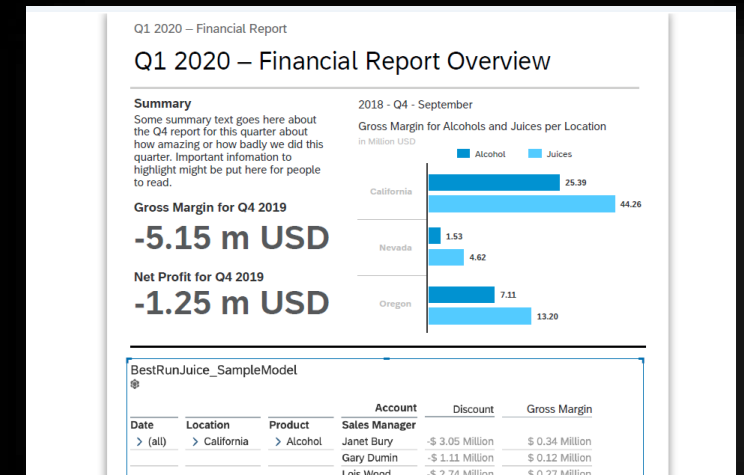
Data Analysis & Exploration

Allow users to intuitively explore entire data sets to better understand initial patterns and points of interests.



Dashboards & Visualizations

Deliver stories to end users that enable them to discover, analyze, plan, and predict all in one seamless user experience.



Enterprise Reporting

Design multi-page reports with sections, dynamic fields, tables and charts; schedule publications to SAC and non-SAC recipients.



Dashboards & Visualizations

Design and deliver stunning, interactive enterprise dashboards across all lines of business

- Extensive visualization library, geo maps powered by ESRI and custom R visualizations
- Define custom calculations, calculated dimensions, aggregations and more
- Display variance, dynamic text, custom tooltips, CAGR and more
- Easily comment, collaborate and share content via document link with other users



Enterprise Reporting

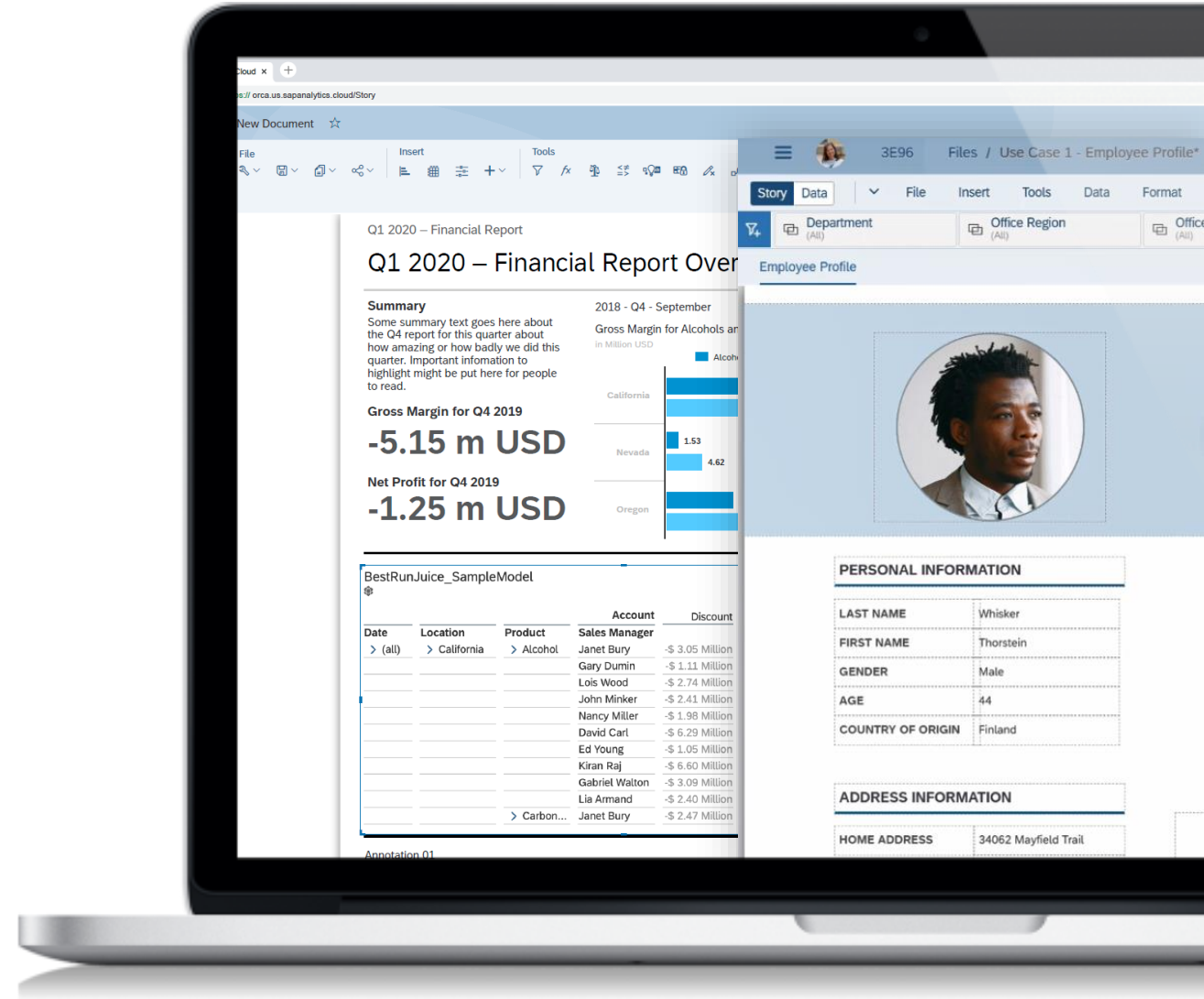
Design reports and distribute to the workforce on-demand or scheduled

Report Formatting

- ✓ Multi-page reports
- ✓ Dynamic label fields, relative positioning
- ✓ Report sections, headers and footers
- ✓ Paginated export to pdf and pptx

Report Delivery

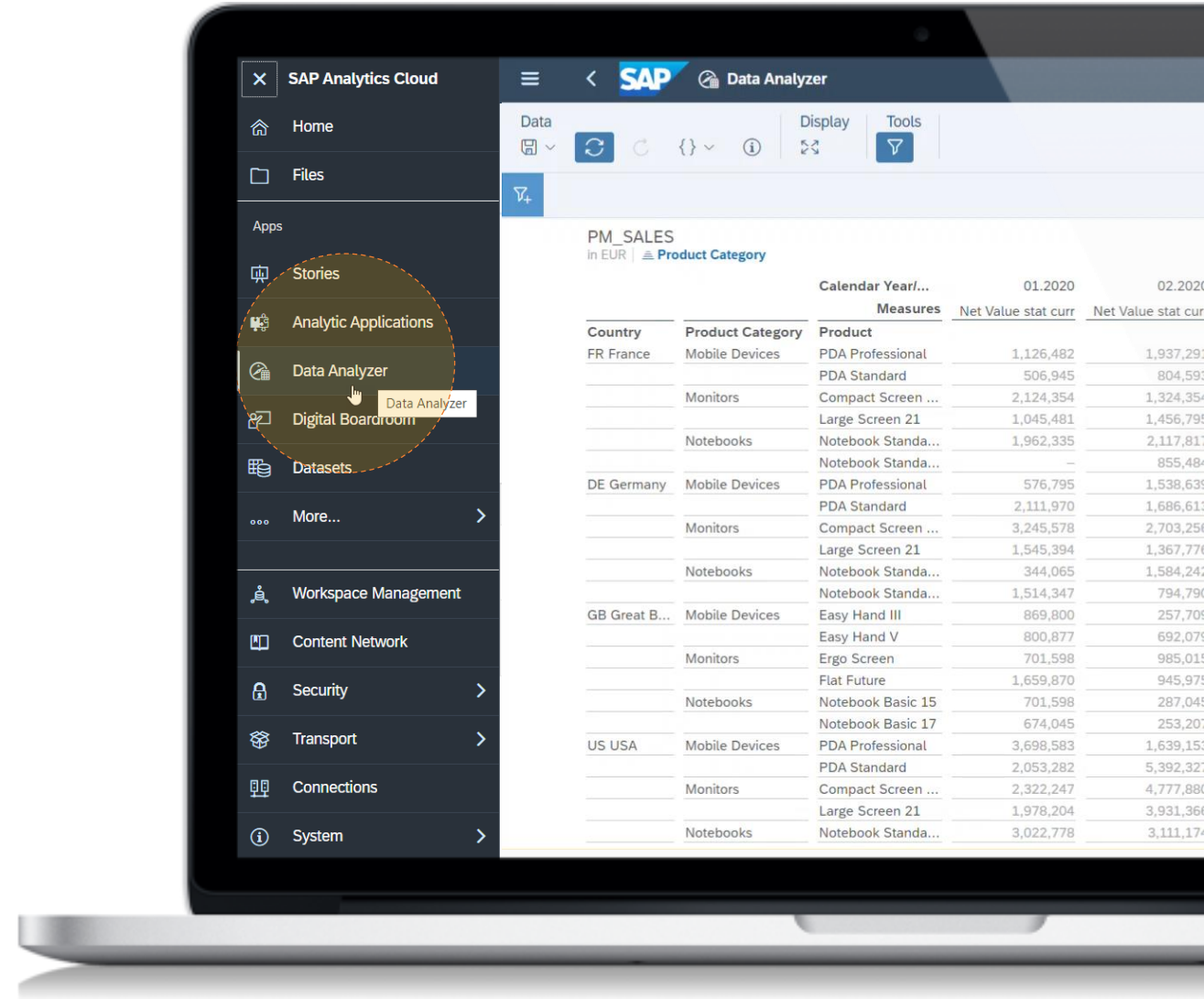
- ✓ Schedule and distribute reports to SAC and non-SAC recipients
- ✓ Burst personalized content to SAC recipients based on recipient authorization



Data Analyzer

Query your data directly and perform ad-hoc analysis in a pivot-table style analysis view

- Supports SAP BW Live queries, SAP HANA Live views and SAP Analytics Cloud models
- Users can find a list of recent insights on the Data Analyzer start page
- Open an existing Insight or discover new insights by starting a new data exploration



The screenshot shows the SAP Analytics Cloud Data Analyzer interface. The left sidebar contains a navigation menu with the following items: Home, Files, Apps, Stories, Analytic Applications, Data Analyzer (highlighted), Digital Boardroom, Datasets, More..., Workspace Management, Content Network, Security, Transport, Connections, and System. The main area displays a pivot table for 'PM_SALES' data. The table has columns for Country, Product Category, Product, and Measures. The measures are Net Value stat curr for 01.2020 and 02.2020. The data is grouped by Country and Product Category.

Country	Product Category	Product	01.2020 Net Value stat curr	02.2020 Net Value stat curr
FR France	Mobile Devices	PDA Professional	1,126,482	1,937,293
		PDA Standard	506,945	804,593
	Monitors	Compact Screen ...	2,124,354	1,324,354
		Large Screen 21	1,045,481	1,456,795
DE Germany	Mobile Devices	Notebook Standa...	1,962,335	2,117,811
		Notebook Standa...	-	855,484
	Monitors	PDA Professional	576,795	1,538,635
		PDA Standard	2,111,970	1,686,611
GB Great B...	Mobile Devices	Compact Screen ...	3,245,578	2,703,258
		Large Screen 21	1,545,394	1,367,777
	Notebooks	Notebook Standa...	344,065	1,584,241
		Notebook Standa...	1,514,347	794,799
US USA	Mobile Devices	Easy Hand III	869,800	257,705
		Easy Hand V	800,877	692,075
	Monitors	Ergo Screen	701,598	985,015
		Flat Future	1,659,870	945,975
	Notebooks	Notebook Basic 15	701,598	287,045
		Notebook Basic 17	674,045	253,205
	Mobile Devices	PDA Professional	3,698,583	1,639,153
		PDA Standard	2,053,282	5,392,322
	Monitors	Compact Screen ...	2,322,247	4,777,880
		Large Screen 21	1,978,204	3,931,366
	Notebooks	Notebook Standa...	3,022,778	3,111,174
		Notebook Standa...		



What-If Analysis

Simulate “what-if” scenarios to test possible outcomes and make more confident decisions

- Perform what-if visually with widgets and value driver trees, or within a table
- Simulate from top to bottom or bottom to top
- Simulate questions like:
 - What if you increase discount by 20%?
 - What if you hire more staff?
 - What if costs of goods increased?



Parkland Health and Hospital System

Enhancing Critical Decision-Making in the Emergency Room

4

Weeks to build the COVID-19 Command Center dashboard with SAP Analytics Cloud and SAP HANA

24x7

Real-time insights on ER volumes, bed utilization, and supply inventory

10

Large screen digital displays with SAP Digital Boardroom and near-real-time data for a critical one-glance solution

“Our dashboards using SAP Analytics Cloud powered by SAP HANA have helped our clinical staff at Parkland deliver **better patient outcomes**. By efficiently managing ER volumes, our ED physicians are **serving more** patients each day and ultimately **saving more lives**.”

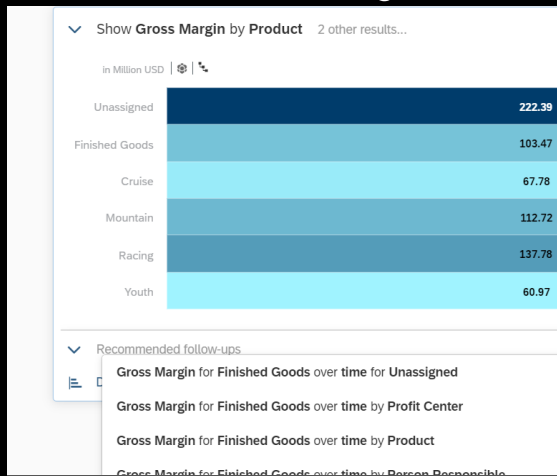
Scott Harrison

VP IT and Chief Data Officer, Parkland Health & Hospital System

Augmented Analytics

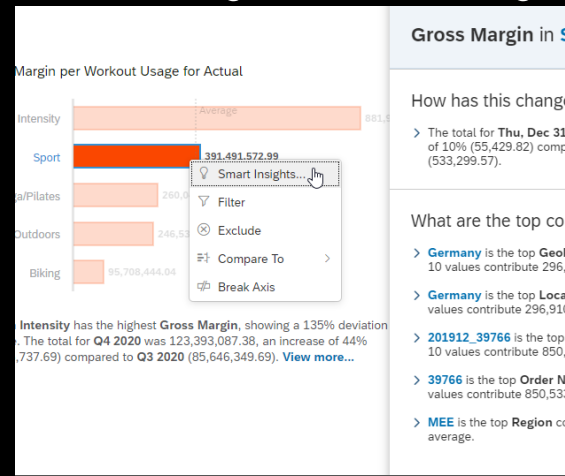
Make smarter and faster decisions with automated insights powered by machine learning

Conversational Search to Insight



Ask questions conversationally and SAP Analytics Cloud finds and visualizes your answers

Automated Insights Smart Insights & Forecasting



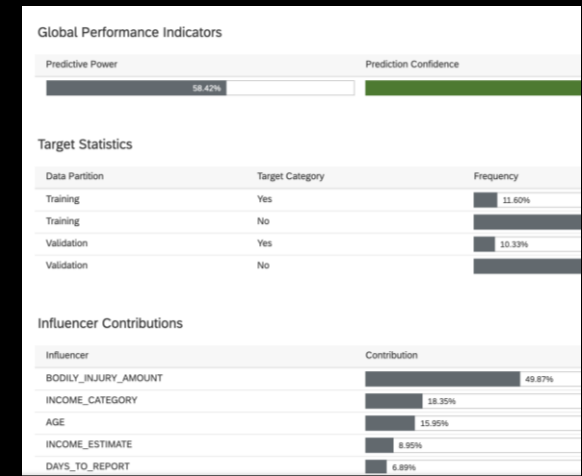
Automatically add forecasts and find top influencers in your data, shown in natural language

Automated Discovery Smart Discovery



Automatically generate stories that reveals trends, relationships, patterns, and outliers in your data

Predictive Analytics Smart Predict



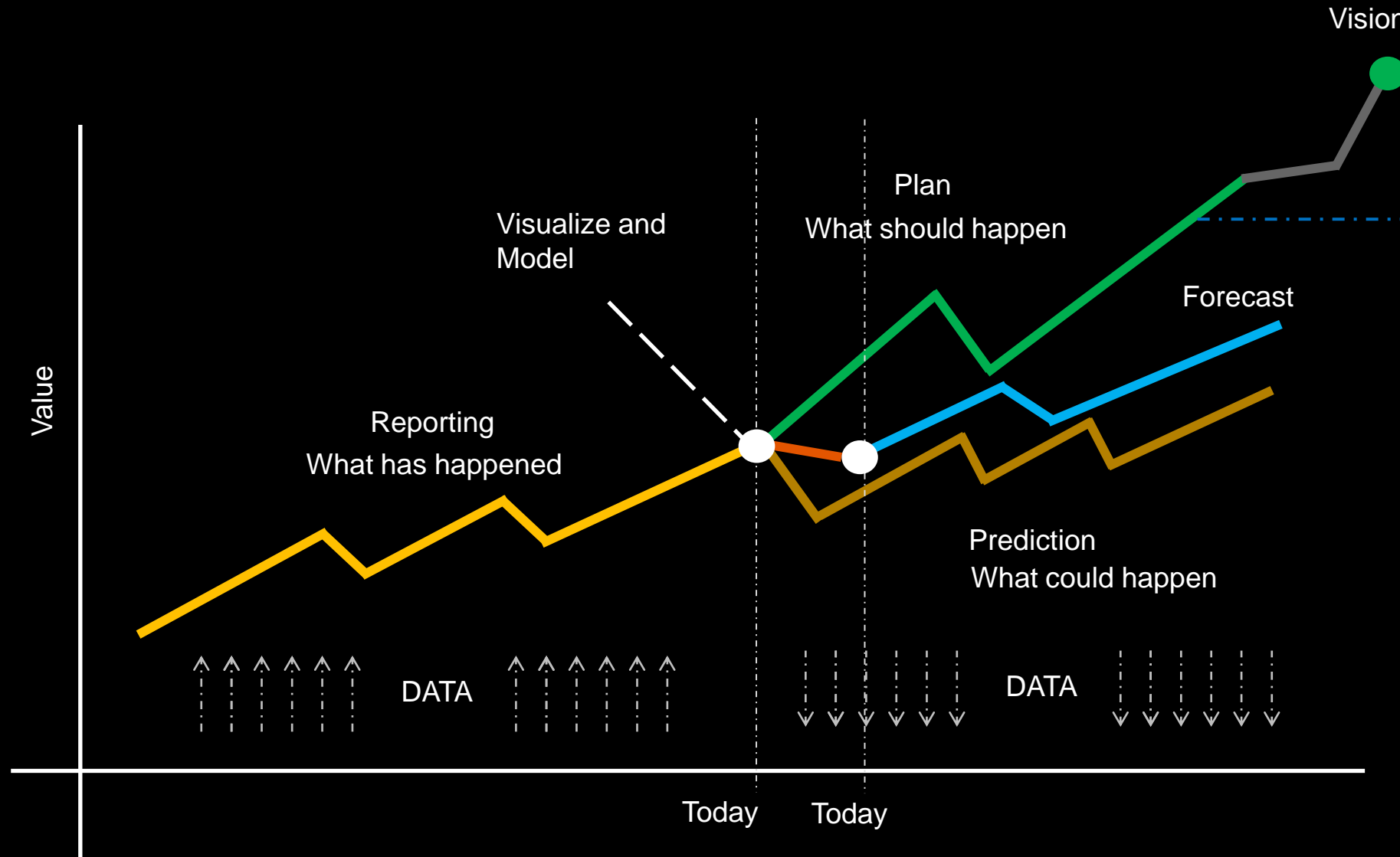
Run regression and classification scenarios, and generate forecasts without data scientists

Information Worker

Citizen Data Scientist



BI, Predictive and Planning – Better Together





EquiRatings

Blurring the Lines of Technology and Tradition with SAP Analytics Cloud

50x

speed of predictive model
development

100

new countries engaged

10

Olympic teams

**“Equestrian sports have been limited in the past—
data is an element to be added to help people make
informed decisions through data.”**

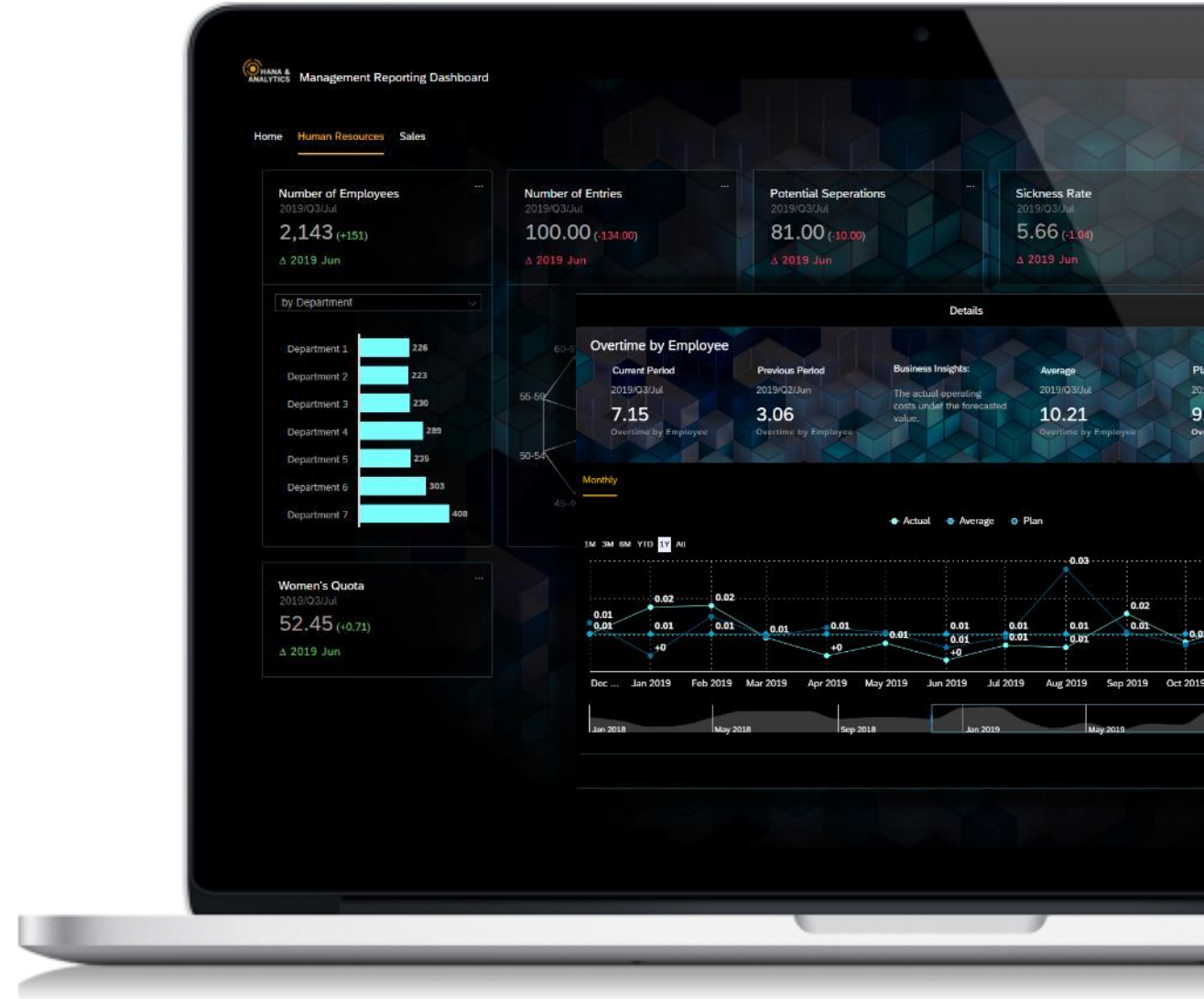
*Sam Watson, EquiRatings
Chief Strategy & Co-Founder*



Analytic Applications

Fulfill unique and advanced use cases and workflows with analytic applications built with Analytics Designer

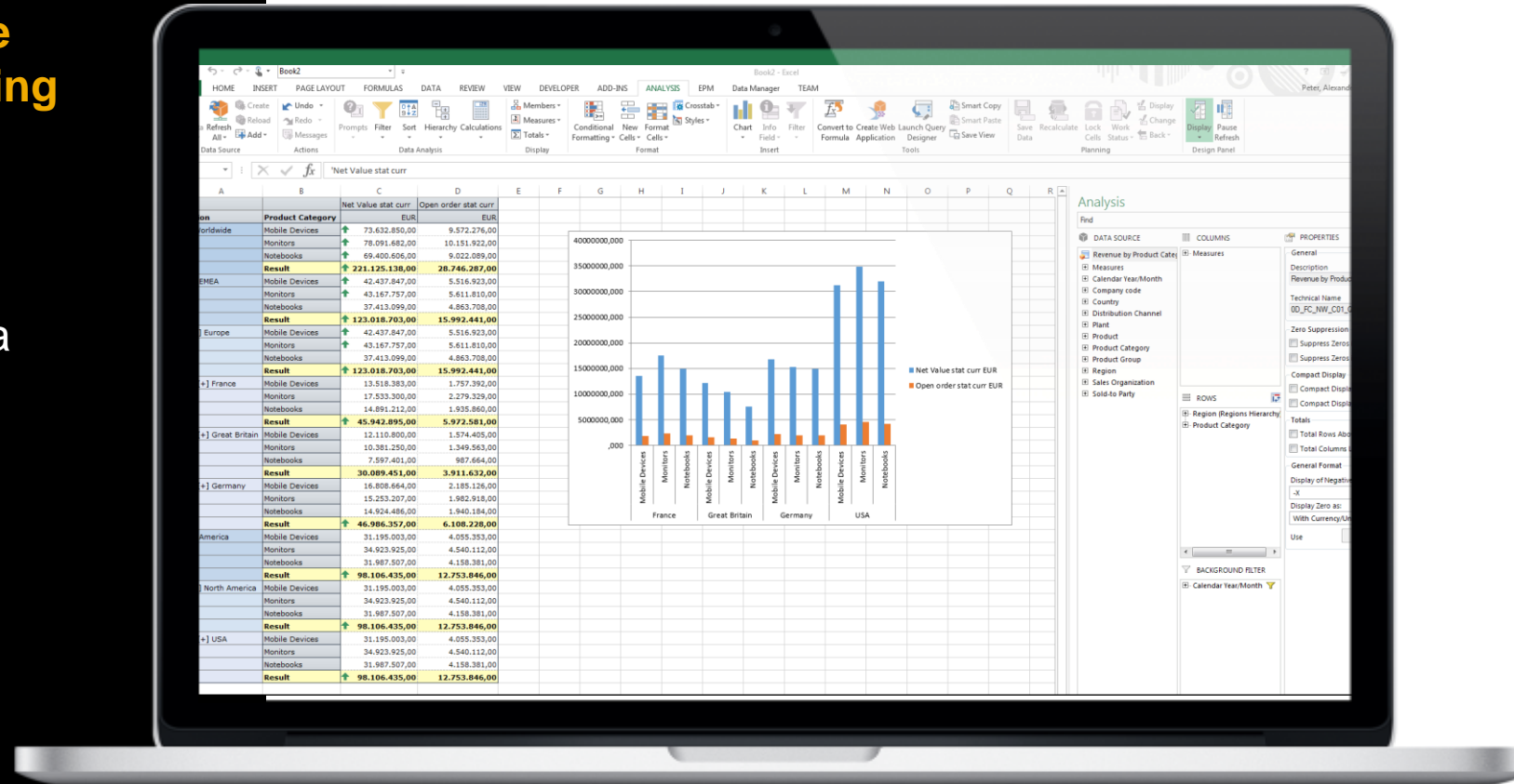
- Develop analytic applications that bring together BI, Planning, and Predictive capabilities
- Start from existing content, reuse user stories widgets, customize, integrate and extend
- Guide the users and adjust the widgets behavior based on their expectations



SAP Analysis for Office

Leverage the familiar Excel interface with SAP Analytics Cloud for reporting and centralized planning

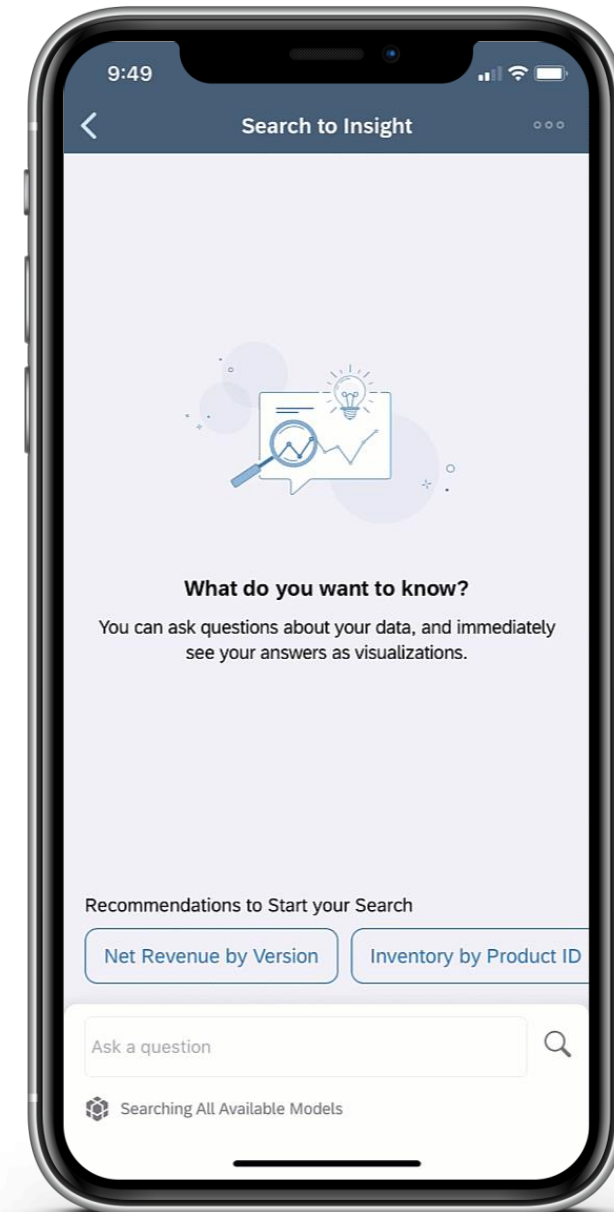
- Design formatted reports in Excel
- Analyze acquired data and live data from BW, BW/4HANA, HANA, and S/4HANA via SAP Analytics Cloud connections
- Available with SAP Analytics Cloud subscription



SAP Analytics Cloud Mobile

Stay informed and connected to your analytics, any time, any place with SAP Analytics Cloud Mobile App

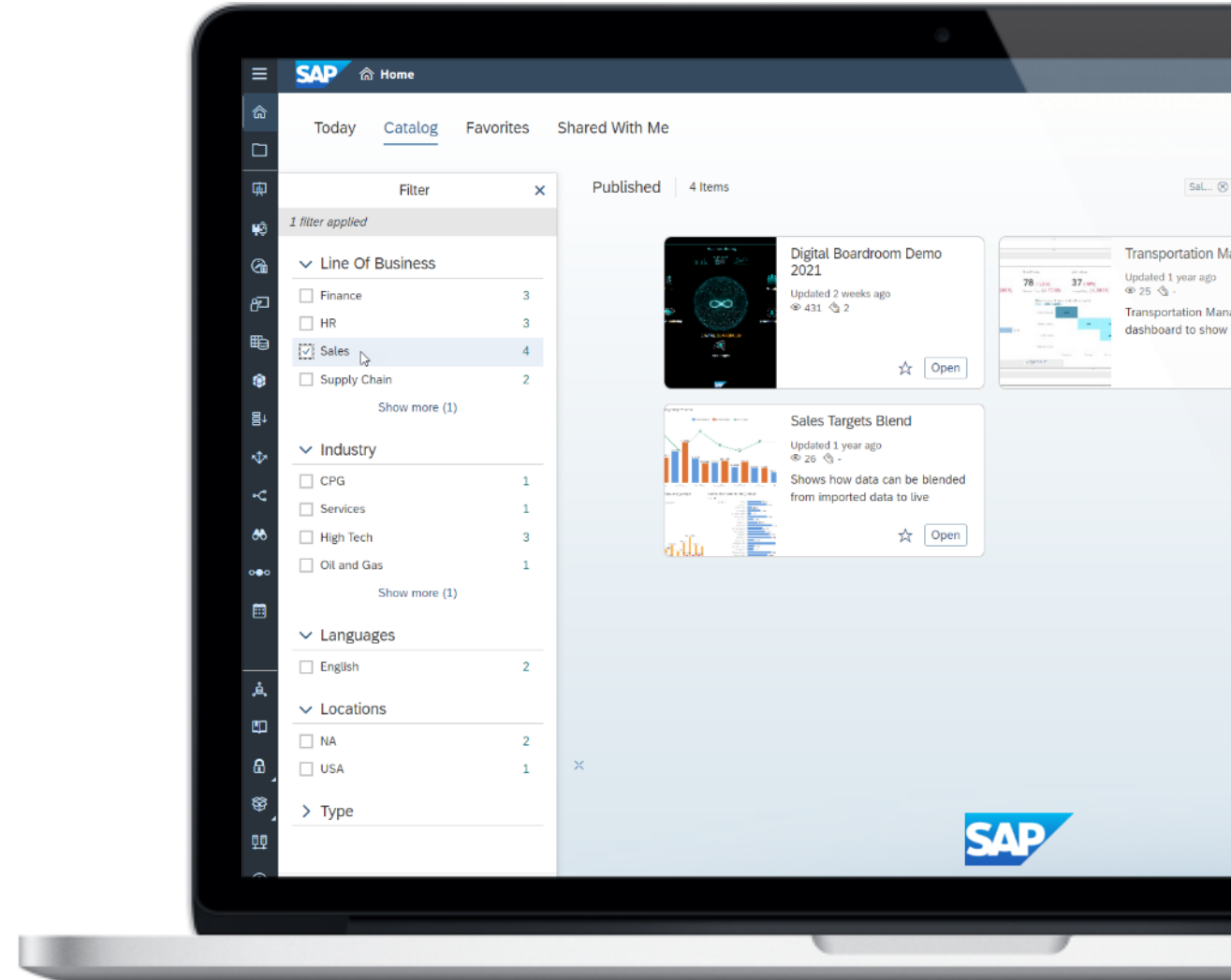
- View your analytics from your iOS and Android devices
- Build stories with responsive layout and view from desktop or device
- Native mobile experience allows you to interact with your content intuitively and with ease
- Supports single-sign-on for easy access to analytics on mobile



Analytics Catalog

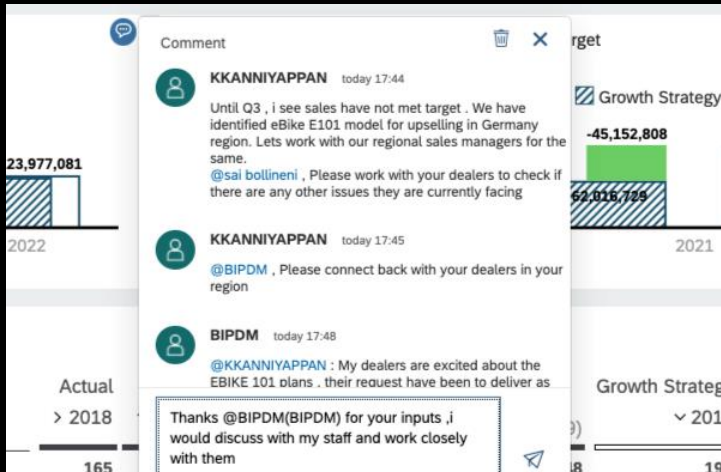
Increase productivity and raise user adoption of key analytics by simplifying access to analytics

- Centralize access to all analytics across your organization
- All analytics including SAP, non-SAP, cloud or on-premise can be added to Analytics Catalog
- Display analytics with consistent business & technical metadata
- Included in all SAP Analytics Cloud licenses



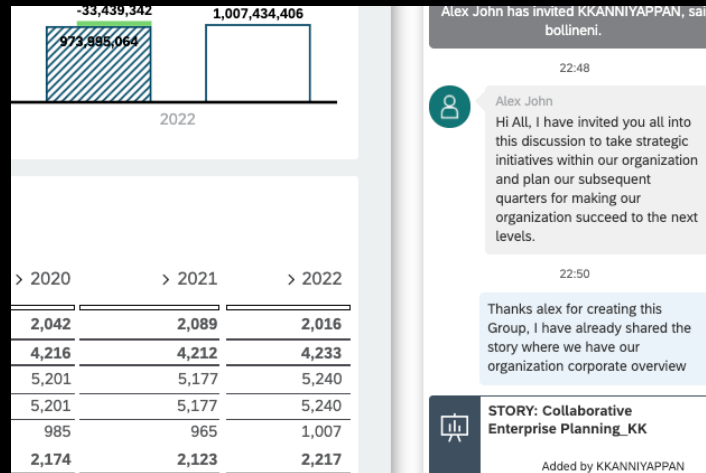
Collaboration

Increase engagement, and accountability with built in collaboration capabilities



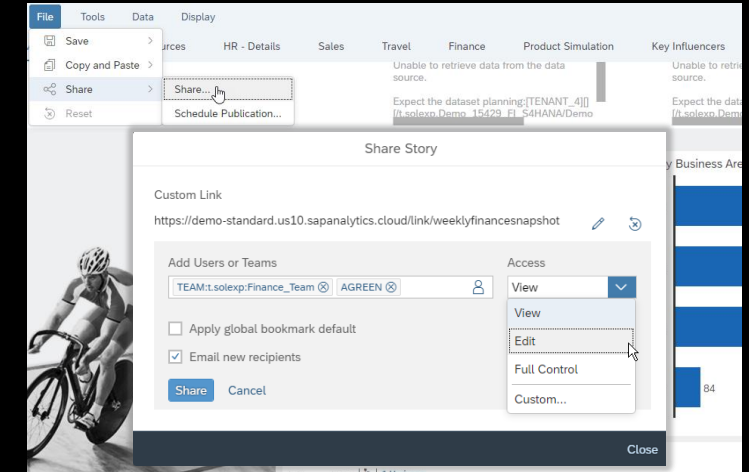
Commenting

Comment on stories, applications and event specific data point table cells. Like, reply, address other users as @UserName



Discussions

Start discussions on your analytics to collaborate with other SAP Analytics Cloud users and teams, on the desktop or on your mobile device.



Sharing

Easily share private or public stories and bookmarks to any SAP Analytics Cloud user or team via a customized link.



SAP Analytics Cloud LoB Embedded Status

Status as of January 2022 – Product Plans are Subject to Change

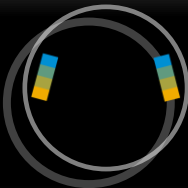


SuccessFactors
HCM Suite

- Core HR
- Talent Mgt
- Commissions

- Learning
- Payroll

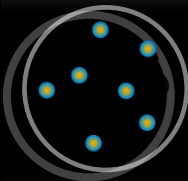
Planned Future
Planned Future



Customer
Experience
aka CX

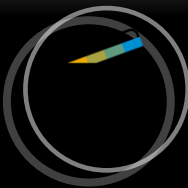
- Marketing
- Sales

- Commerce
- Service



S/4HANA
Cloud

- All Modules



Spend

- Fieldglass*
- Ariba Network (Buyers)

- Concur
- Ariba Network (Suppliers)
- Ariba Apps

GA planned H1 2022
GA Planned Q4 2021
LA/Beta planned Q4 2021



SAP Analytics Cloud

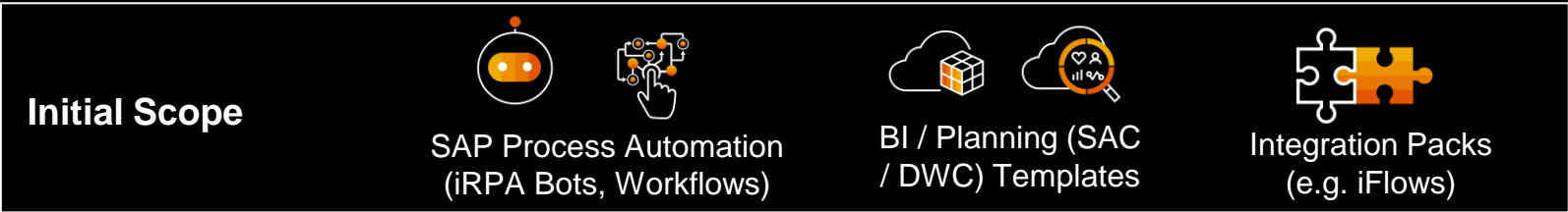
SAC Embedded Status

- Available
- Planned
- Not Planned

*Limited Availability

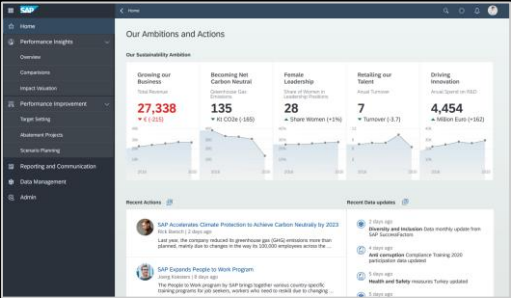
What is Business Content on BTP?

SAP BTP Business Content are **pre-packaged objects/templates** encompassing **best practices** that can be deployed as part of a specific **SAP BTP service**, to **jump start** customer implementations

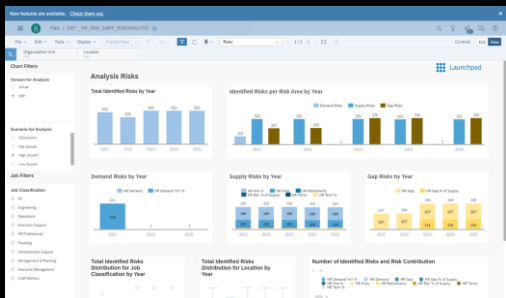


A	B	I	J	K	L
Cost Center Input WUSD					
		Plan-201707	Plan-201708	Plan-201709	Plan-201710
Financials (DE)	* Operating Expense	106,532	-	67,500	184
	▶ Building Expense	-	-	4,551	105
	▶ Depreciation & ...	-	-	9,860	12
	▶ Employee-relat...	106,532	-	27,303	34
	▶ Other Operatin...	-	-	25,787	32
Purch & Store 1 (DE)	* Operating Expense	9,685	-	-	-
	▶ Building Expense	-	-	-	-
	▶ Other Operatin...	9,685	-	-	-
R&D (DE)	* Operating Expense	183	-	-	-
	▶ Other Operatin...	183	-	-	-

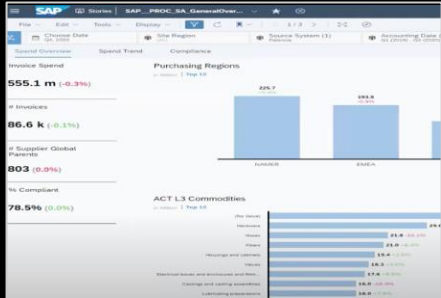
Integrated Financial Planning



Sustainability Control Tower



Workforce Planning

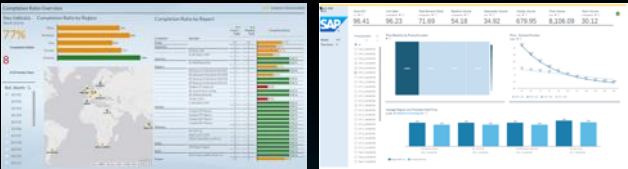


Spend Analysis

*E.g., Financial Planning & Analysis takes **6 Months** to deliver when started from scratch as compared to **2-4 Weeks** when using business content – **6X accelerated time to value***

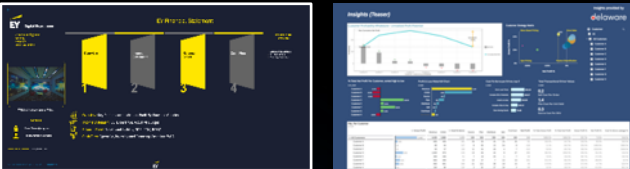
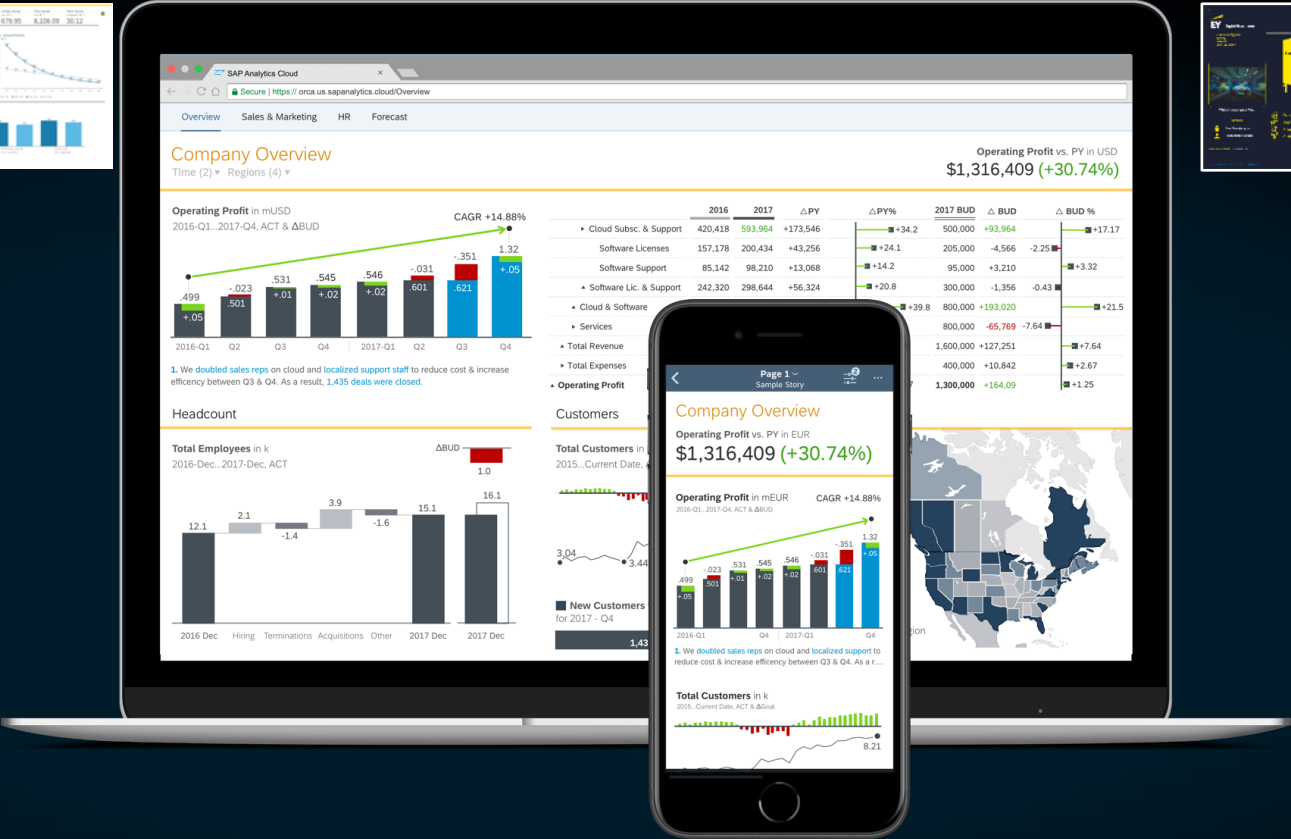
More Info: [SAP Business Content Blog](#) | [SAP API Business Hub](#) | [SAP Analytics Content](#) | [SAP iRPA Store](#)

Enterprise Analytics: 225 Industry and LoB Content packages enabled by SAP Analytics Cloud



•130 Packages by SAP

- SAP S/4HANA
- SAP SFSF
- SAP Concur
- SAP Ariba
- Planning
- etc..



•95 Packages by Partners

- SAP data sources
- Non-SAP data sources

Accelerate your Enterprise Analytics projects with pre-built analytics from SAP and our Partners

This is the current state of planning and may be changed by SAP at any time.

Basler Verkehrs-Betriebe (BVB): Transparent Financial Planning reduces workload for Controllers and strengthens business.

- SAP Analytics Cloud allowed single-year planning to be optimized within months due to pre-defined Business Content for integrated financial planning in SAP S/4HANA including business scenarios enhanced with specific requirements.
- Ability to analyze and plan the profit and loss statement directly in SAP Analytics Cloud and execute actuals to SAP S/4HANA
- Faster insights into the composition of costs and fewer errors due to the elimination of shadow systems.
- Easier interdepartmental coordination and real-time corporate control

> 130 million
passengers
annually

> 15K
planning
objects

> 350
planning
users

*The combination of SAP Analytics Cloud and SAP S/4HANA is a keystone of our **digital finance transformation** and provides the competitive advantage we need to stay innovative.*

Hans-Peter Günter - Controller/ Project Manager BVB



Why SAP Analytics Cloud?

- ▶ **Analyze, predict and plan** all in one unified user experience
- ▶ **Connect live** to cloud and on-premise data sources and break down data silos
- ▶ **Make confident decisions** with automated insights powered by machine learning
- ▶ **Collaborate with ease**; add discussions, comments or share content on desktop or mobile
- ▶ **Innovate rapidly** with new innovations and features automatically added every quarter
- ▶ **Scale flexibly** to support users & enhance capabilities without increasing IT costs
- ▶ **Cloud software-as-a-service** solution fully hosted and maintained by SAP



Outlook on SAC BI future investments



DWC Integration

DWC models as 1st class citizen in SAC, extending federated access to additional sources



Embedded in all SAP Core Apps

Deep embedding of SAC in S/4HANA, C/4HANA, Fieldglass, Ariba, Concur, etc



Enhanced support for Live Sources

Provide the very best live analysis capabilities and greater functional parity for HANA, BW, S4, HANA Cloud



Data Exploration

Data Analyzer as THE one exploration experience with integration into story workflow, catalog & chart support



Performance & Usability

Optimized Story Designer & Analytics Designer, Story Designer Performance Advisor, Lightweight viewer



Enterprise Readiness

Administration Cockpit, Enhanced collaboration with bursting and commenting, Accessibility with Theming & keyboard support

Thank you

[SAP Analytics Cloud](#)

[Visit the Community](#)

[Explore our Roadmap](#)

[Experience for Free](#)

[Get Started](#)

