



# SAP PO to SAP Integration Suite:

## Why and How, Migration Factory

**What is SAP's Integration Strategy?**

# Deep-dive integration strategy

- Integration in the cloud is a key pillar of SAP's strategy, and
- A strategic corporate priority for SAP executive leadership

["Integration Makes All the Difference" – Blog](#)

[Integration strategy paper with road map](#)



**Christian Klein**

CEO and Member of the Executive Board of SAP



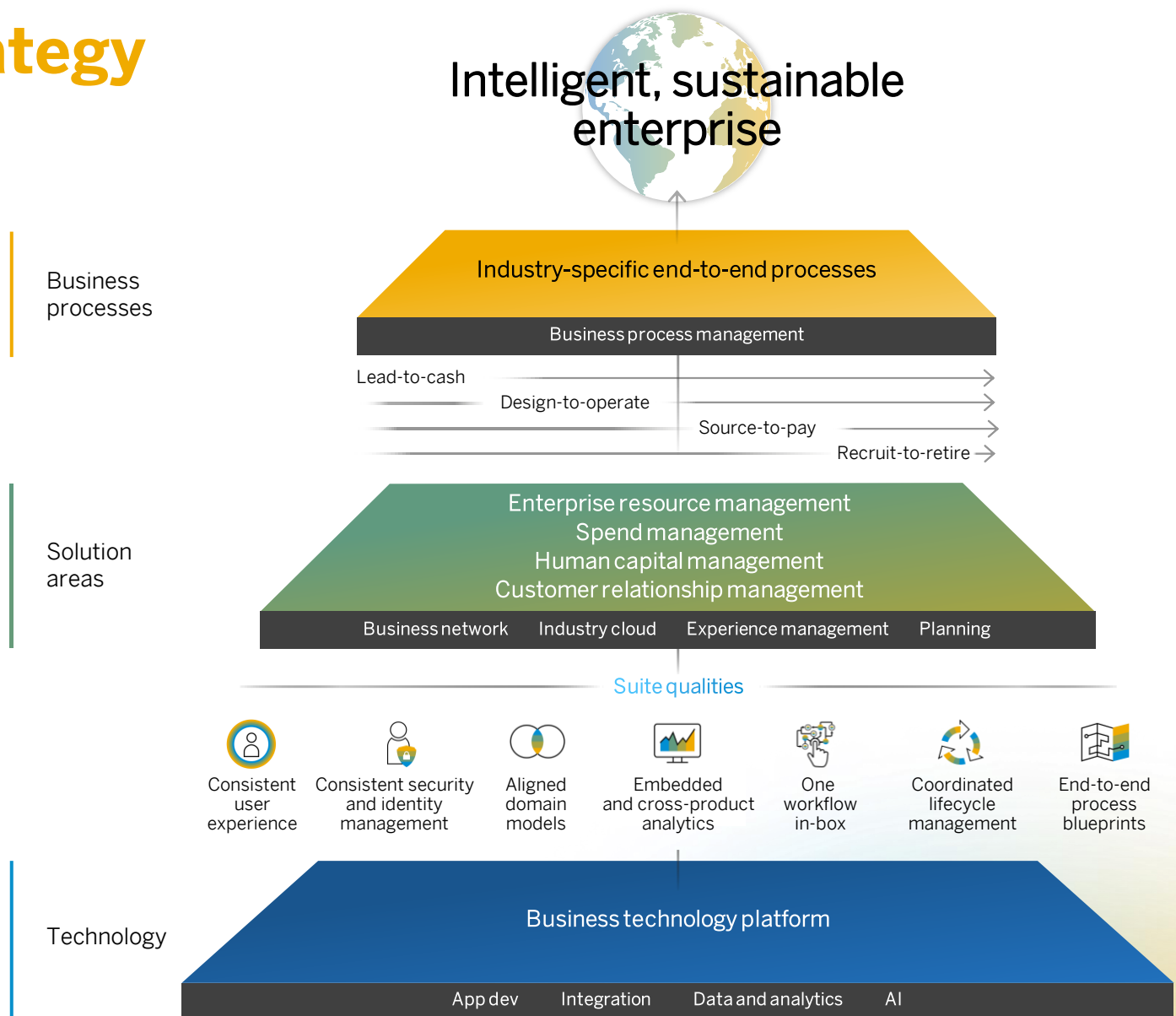
**Jürgen Müller**

CTO and Member of the Executive Board of SAP, Technology & Innovation



**Thomas Saueressig**

Member of the Executive Board of SAP, SAP Product Engineering



# SAP's investment in integration

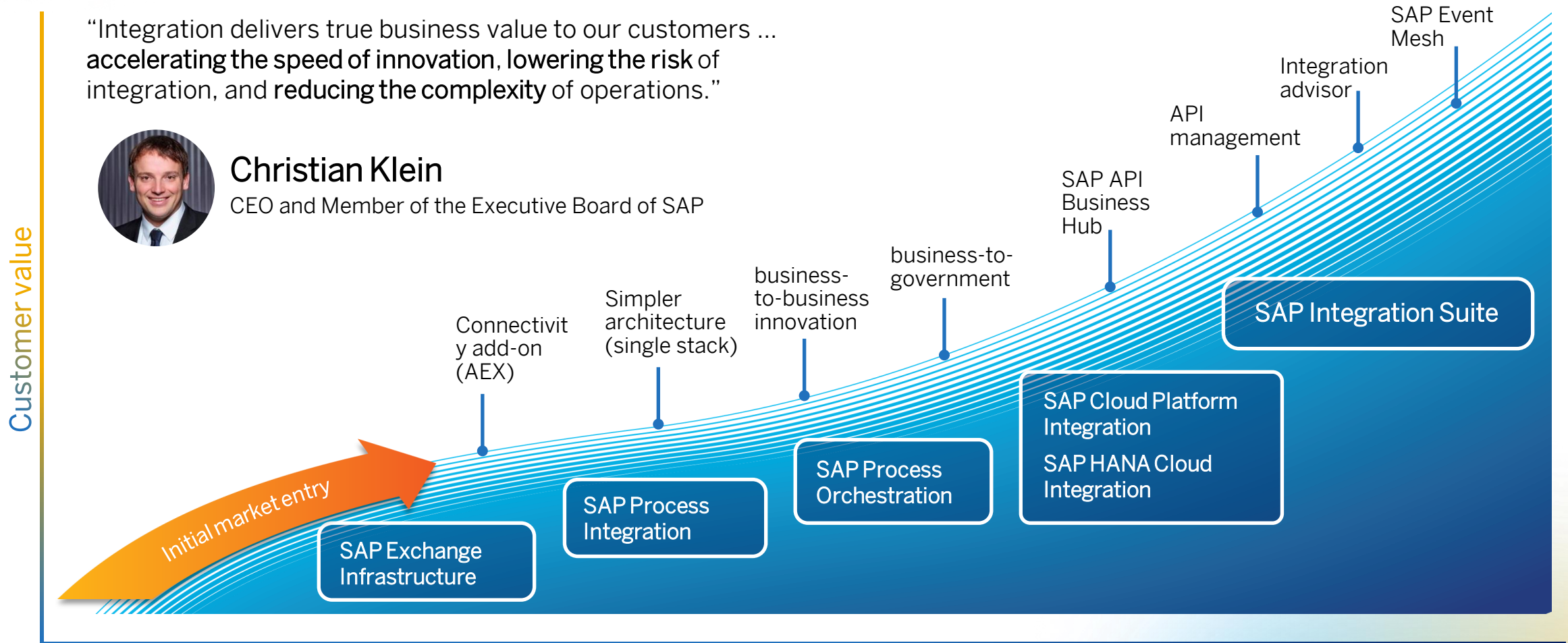
## A history of continuous innovation

“Integration delivers true business value to our customers ... accelerating the speed of innovation, lowering the risk of integration, and reducing the complexity of operations.”



**Christian Klein**

CEO and Member of the Executive Board of SAP



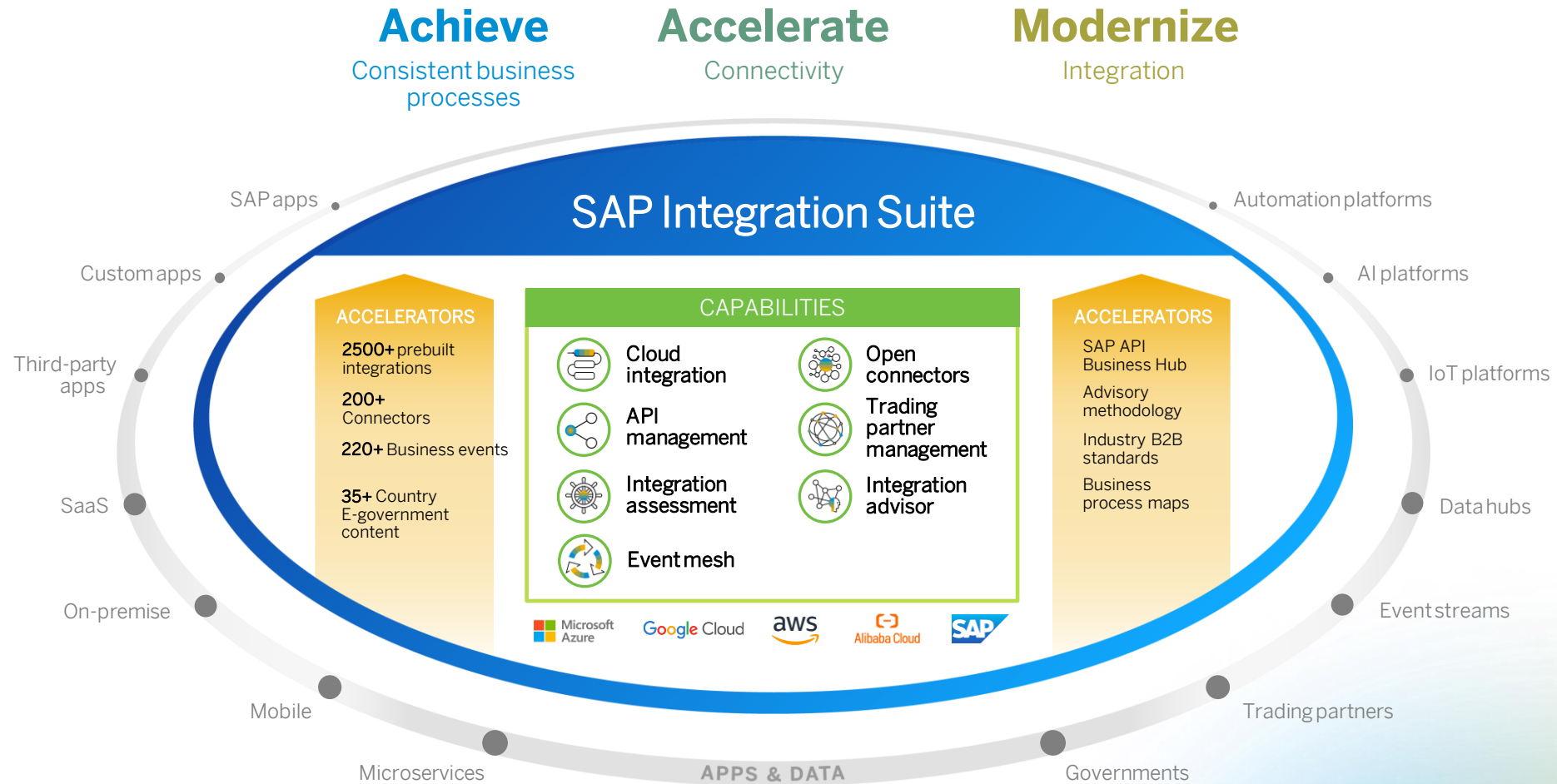
2003

TODAY

© PUBLIC | SAP or an SAP affiliate company. All rights reserved

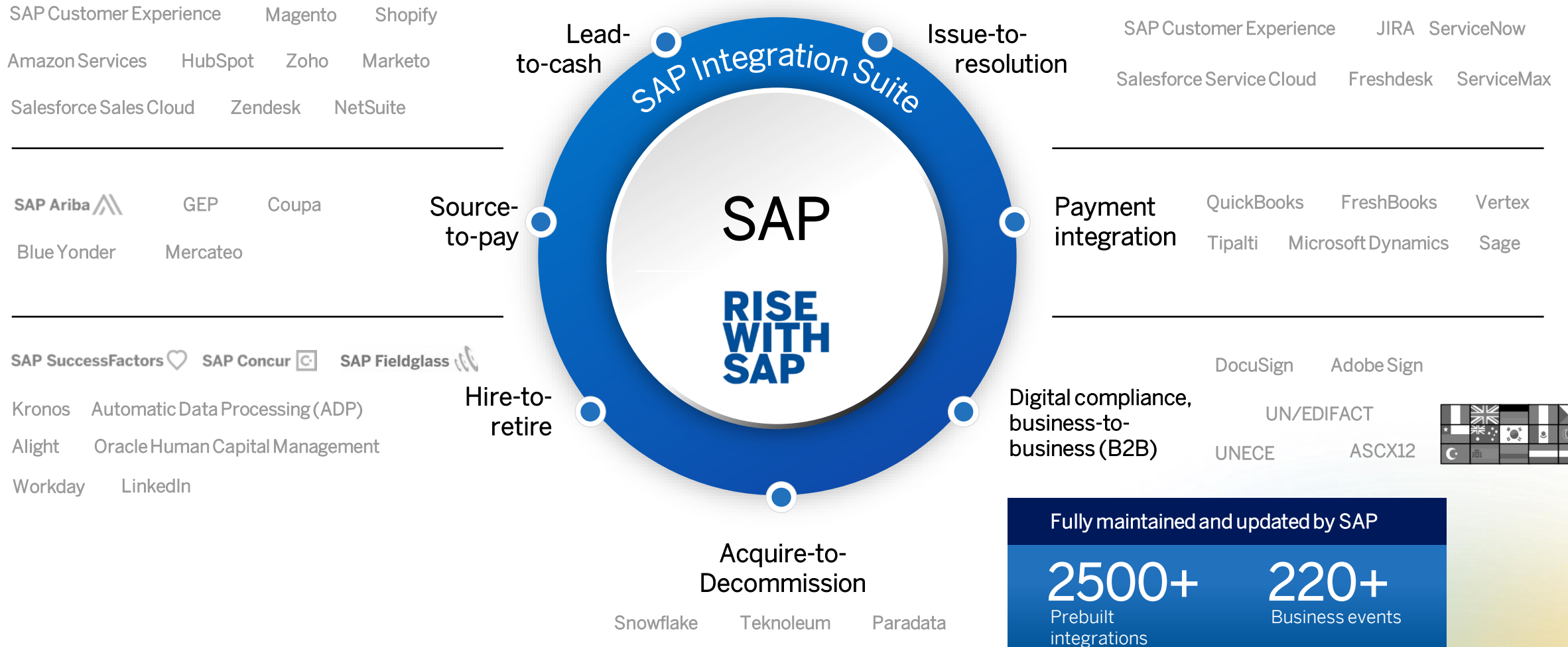
# SAP Integration Suite

Open. Holistic. Enterprise-grade.

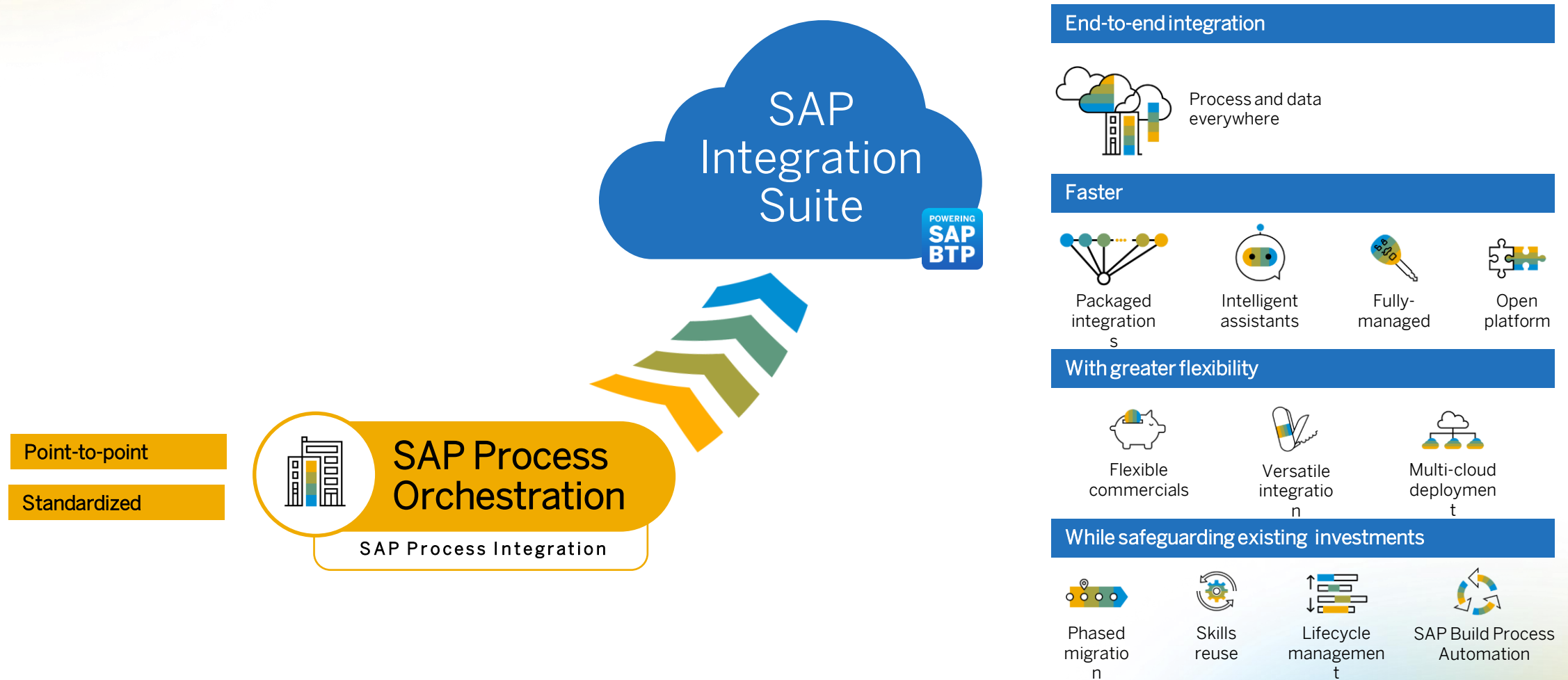




# Achieve end-to-end business processes across SAP and third-party systems



# Modernize integration to power your transformation journey



Achieve end-to-end-process integrations faster at a lower TCO

# Hybrid integration strategy from SAP

SAP continues to support SAP Process Orchestration software to protect investments and support a smooth and safe transition to SAP Integration Suite.

The mainstream maintenance of SAP Process Orchestration 7.5 has been continued until the end of 2027. Extended maintenance can be provided until the end of 2030.

## Recommended actions to customers today:

Move to SAP Process Orchestration 7.5, the long-term supported release as previous versions went out of maintenance at the end of 2020.

Complement it with SAP Integration Suite for agile integrations and leverage the cloud integration runtime within SAP Process Orchestration.

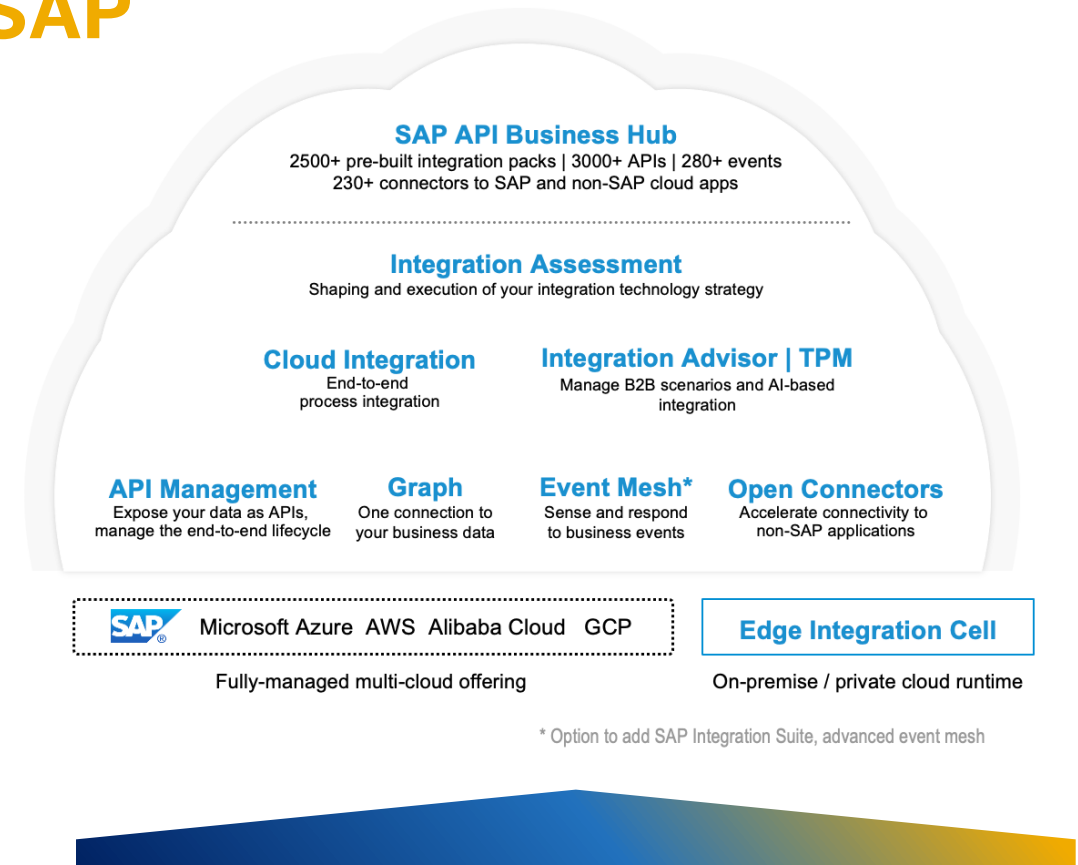




Figure 1 SAP Cloud Platform Integration Suite for hybrid and heterogeneous environment

that are key to a successful transition, including upgrading to SAP NetWeaver 7.5 (if an older release is currently running out of maintenance); building new integrations with SAP Cloud Platform Integration Suite, and following best practices for moving existing integration scenarios to SAP Cloud Platform Integration Suite. It also looks at SAP's roadmap for SAP Process Integration, SAP Process Orchestration, and SAP Cloud Platform Integration Suite to help organizations plan for the journey ahead.

## A Hybrid Integration Platform for Modern Environments

SAP Cloud Platform Integration Suite is an open and enterprise-grade integration platform that runs on multi-cloud environments (see Figure 1). It is SAP's recommended integration platform for simplifying and accelerating integrations for both SAP and third-party integration scenarios. SAP Cloud Platform Integration Suite supports integration in a holistic manner and provides pre-built integration packages to enable accelerated integrations. It supports a range of integrations, including the integration of applications in the cloud and on premise, master data integration, R2B and electronic data interchange (EDI) integration, business-to-government (B2G) integration, data integration and pipelines, event-driven integration, and integration based on applications.

programming interfaces (APIs). It also supports design and runtime governance of APIs and acts as the foundation for process excellence across the value chain.

To safely and successfully transition to SAP Cloud Platform Integration Suite while protecting existing investments in SAP Process Integration and SAP Process Orchestration, we recommend the following three actions:

1. Upgrade to SAP NetWeaver 7.5. With lower versions reaching end of maintenance at the close of 2020, upgrade to the long-term supported release of SAP NetWeaver, which is 7.5.
2. Build new agile integrations with SAP Cloud Platform Integration Suite. Future-proof your hybrid integration strategy by developing new agile integrations – including ground-to-cloud, ground-to-ground, cloud-to-ground, and cloud-to-cloud integrations – using SAP Cloud Platform Integration Suite.
3. Move existing integration scenarios to SAP Cloud Platform Integration Suite. Follow best practices to safely and securely move existing integration scenarios to SAP Cloud Platform Integration Suite.

The following sections walk through the details of these recommended actions.

- 2500+ integration packs for SAP and third-party software
- API-based and event-driven integration patterns
- 200+ connectors to support integration in increasingly heterogenous landscape (technical and application connectors)
- Web-based, easy-to-use development environment and flexible pipeline

Move existing integration scenarios to SAP Integration Suite as part of SAP S/4HANA and the RISE with SAP solution

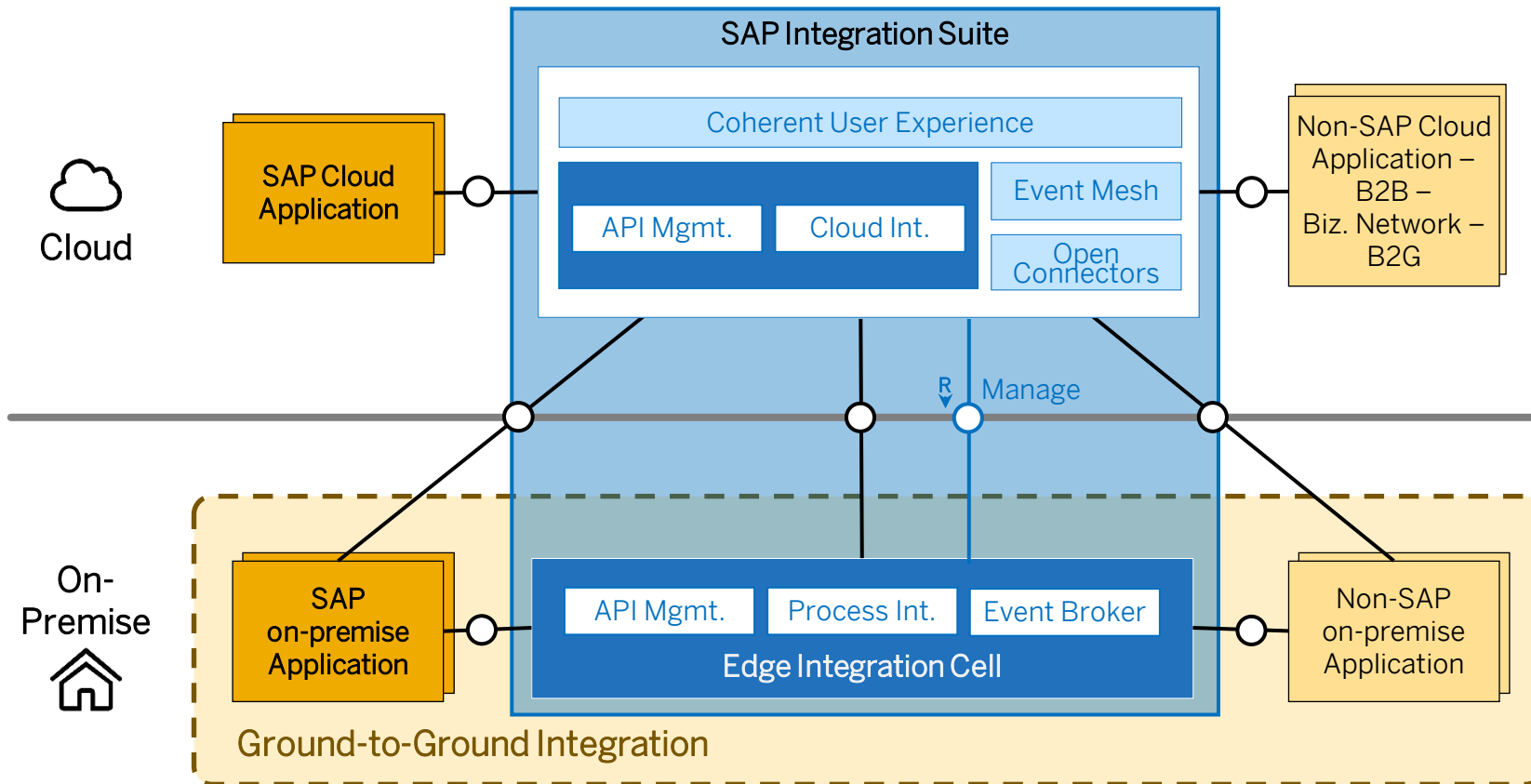
- Move away from custom-developed integrations to standard integrations delivered and maintained by SAP
- Reuse assets: Auto-import of mappings to reduce up to 50% of integration work; other assets with APIs\*
- Get help with migration guidelines and methodology

Use for on-prem-to-on-prem scenarios

- Planned: Integration suite edge integration cell – hybrid deployment of runtime agent

# Next-generation hybrid integration runtime

Extend SAP Integration Suite in customer environments



## Hybrid operations

Installation, system monitoring and software update by customer

Design, configuration and message monitoring in cloud

Remote API's for custom integration in existing on-premise monitoring and operations tooling

## Integration flow execution on-premise

Existing integration flows can be re-used

Add new integration flows for on-premise execution

Add API policies as configurations to integration flows

## API-managed integrations

Full lifecycle of APIs

Expose legacy interfaces as modern API's

Execute API policies & mediations on-premise

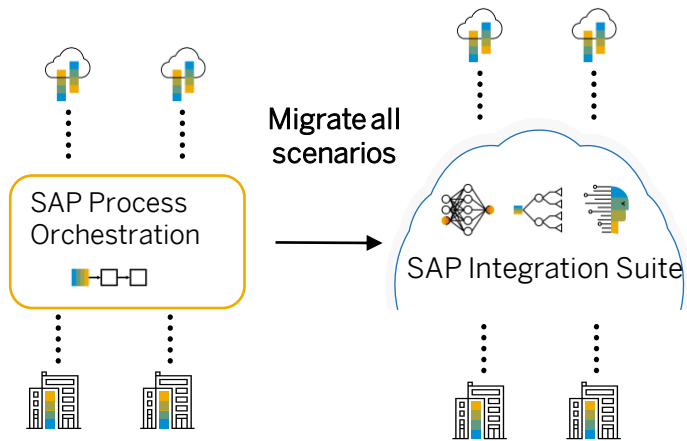
## Event bridge

Expose business events from SAP on-premise applications to SAP Event Mesh and/or third-party event brokers

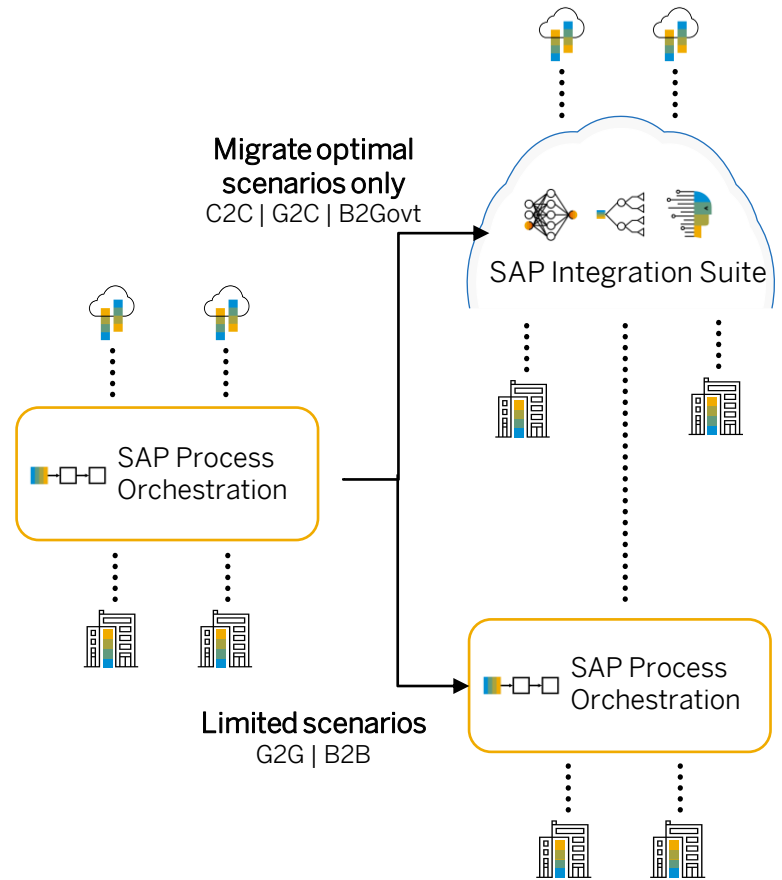
# How we move?

## Transition options to SAP Integration Suite

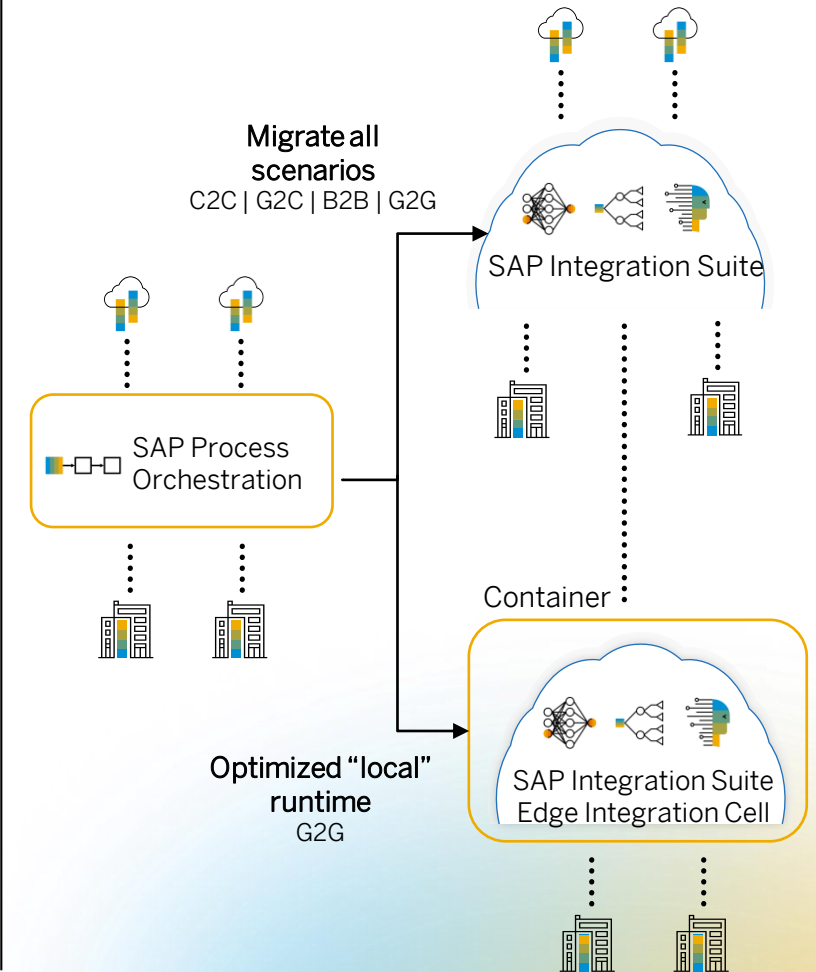
### Option 1 Complete migration



### Option 2 Hybrid migration

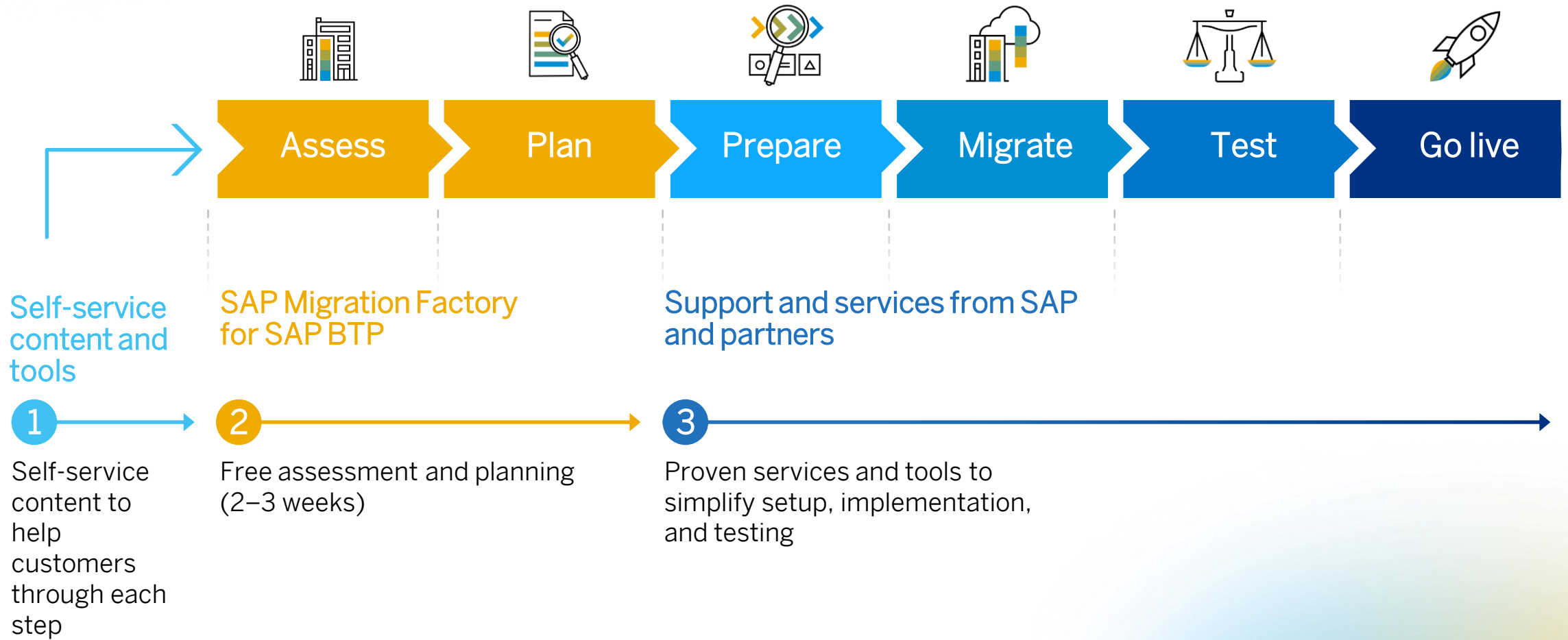


### Future (Beta 2H 2022) Hybrid (No PO)



**What are the tools and services?**

# SAP and partners help customers modernize integration each step of the way.





# Self-service tools as part of the Interface Migration Strategy

## Migration Assessment tool (beta launched in Sept 2022)

- Assess your current SAP Process Integration / SAP Process Orchestration landscape
- Estimate migration effort
- Check for technical showstoppers & provide possible workarounds

## Migration tool (beta launched in Sept 2022)

- Automate the migration based on integration flow templates

## Regression Test Tool

- Partner Solution from Figaf and INT4

## Edge Integration Cell (planned beta by Q4.2022)

- Hybrid Runtime Deployment option for SAP Integration Suite



# Migration assessment tooling from SAP\*

Beta launched in Q3 2022

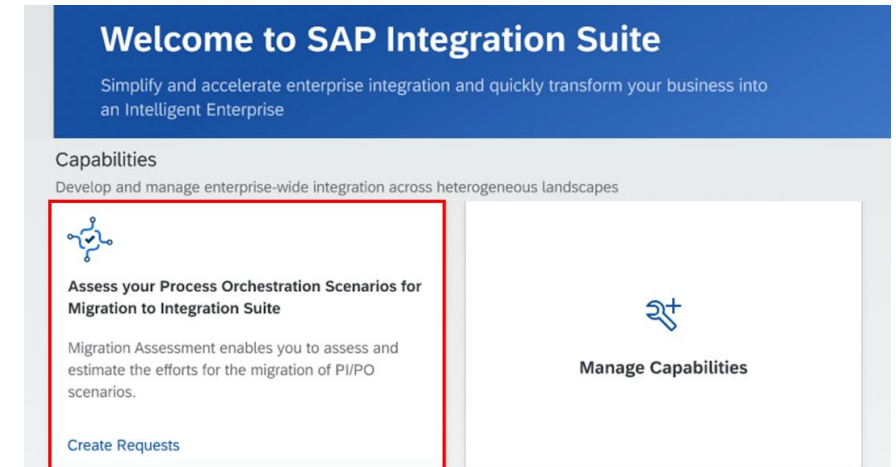
- Is planned as additional capability of SAP Integration Suite
- Automatically analyzes SAP Process Orchestration systems regarding migration to SAP Integration Suite (as-is migration) based on flexible rule framework
- Provides results containing migration status and t-shirt size for migration effort (S/M/L/XL)
- Highlights migration showstoppers and provides possible workarounds
- Has two assessment steps: data extraction (using cloud connector to SAP PO) , scenario evaluation

## Shows in evaluation dashboard:

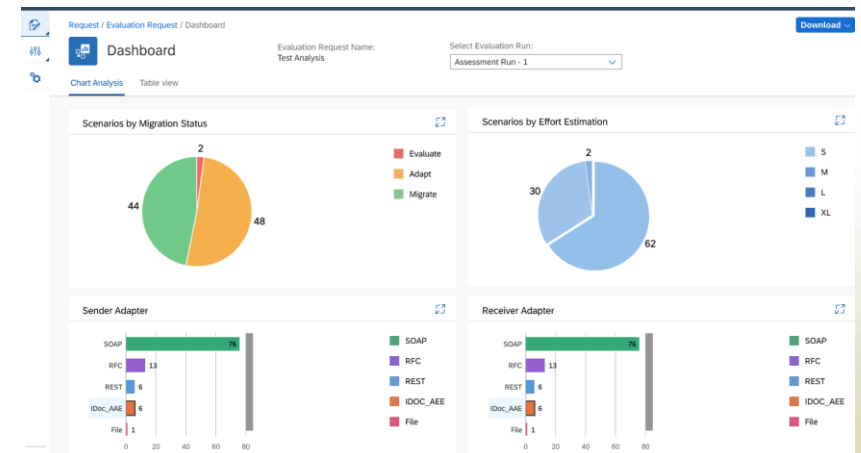
- Migration status
- Effort estimation
- Sender and receiver adapters
- List of integration scenarios

## Export Result:

- PDF Report
- Excel Sheet



(Lab mock-ups – final product may look different)



© PUBLIC | SAP or an SAP affiliate company. All rights reserved

\* Available with SAP Integration Suite, standard and premium editions

# Automated migration tooling from SAP\*

Beta launched in Q4 2022

- Planned as additional capability of SAP Integration Suite
- Scenario migration based on rule-and-template approach
- Many scenarios that can be fully or partially migrated automatically, with remaining interfaces requiring manual effort or rework
- Integration Flow templates represents the integration flow skeleton which is used to migrate the ICO/Integration flow to an integration flow of Cloud Integration
- Automatic framework to identify fitting templates
- More than one template can be applicable for a scenario
- Default Template for the cases where the scenario is not migratable or templates not available for migratable scenarios
- Templates availability will be a gradual process

(Lab mock-ups – final product may look different)

Direction	Component	Source Adapter Type	Target Adapter Type	Channel Name
Sender	SAP ERP	REST	HTTP	Sender_Channel
Receiver	SAP Field Glass	File	SFTP	Receiver_Channel

# Automate integration regression testing

Accelerate your migration to SAP Integration Suite with SAP partner solutions



Available on  
**SAP Store**

## PARTNERS



“**Testing** is a substantial part of the migration effort and it consumes somewhere around **60% to 65% of the overall migration effort.**”<sup>1</sup>

## CAPABILITIES

- Automate regression testing of integration flows
- Complement SAP’s automated assessment & migration tooling
- Available on the SAP Store with **extended free usage period**

## BENEFITS



**Faster** migration at a lower cost

**Higher** testing accuracy

**Reduced** burden on technical and functional teams

**No** business disruption

### <sup>1</sup>Source:

Abhishek Singh, “[How to Successfully Migrate to a New Integration Platform.](#)” Gartner Inc., October 2021.

GARTNER is a registered trademark and service mark of Gartner, Inc. and/or its affiliates in the U.S. and internationally and is used herein with permission. All rights reserved.

# Reduce up to 50% of integration work

## Import and Reuse mapping from ESR

- 1 Required roles to import and export ESR content  
(SAP\_XI\_ADMINISTRATOR or SAP\_XI\_CONTENT\_ORGANIZER)
- 2 Configure your Cloud Connector for the ESR system
- 3 Import and Reuse content from ESR

Content supported:

- Message Mappings
- Operation Mappings
- Service Interfaces

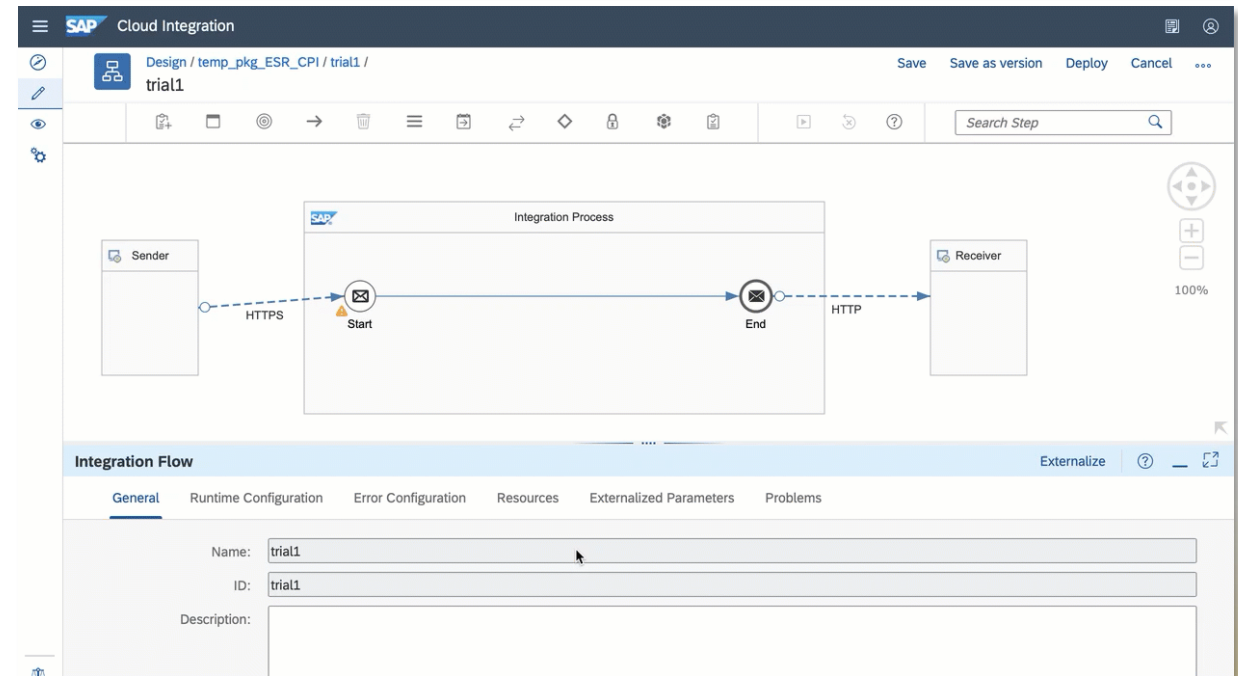
*Note: ESR version 7.3 and onwards is supported.*

[Blog: Importing Message Mapping from ES Repository in SAP Cloud Integration](#)

Troubleshoot: [SAP Note 2681589](#)

Restrictions apply in import capability : [SAP Help Documentation](#)

The screenshot shows the 'ES Repository' configuration page in the SAP Cloud Integration console. The page has a header with the SAP logo and 'Cloud Integration'. Below the header, there are tabs: 'Product Profiles', 'Transport', 'ES Repository' (selected), 'Custom Tags', and 'Malware Scanner'. The main area contains four input fields: 'Name: \*', 'Address: \*', 'Credential Name:', and 'Location ID:'. Each field has a corresponding text input box.





# Best practices for moving existing integration scenarios to SAP Integration Suite

## Guidelines to design enterprise-grade integration flows

- Covering different areas such as applying highest security standards, handling errors, scripting, etc.
- Application specific guidelines (SuccessFactors, API Management)
- Reference integration flows @API Business Hub or directly in Cloud Integration to be deployed with minimum effort
- See [guidelines in documentation](#)

## Guidelines to implement specific integration patterns

- Most common enterprise integration patterns such as content-based routing, aggregator, splitter, etc.
- Exactly-once scenarios
- See [blog series](#)

## Enterprise integration pattern community

- 60+ enterprise integration patterns implemented with Cloud Integration
- [Overview blog](#)



Huge and active community

SAP Help Portal SAP Cloud Integration

Browse by Product SAP Learning Journeys

### SAP Cloud Integration

Cloud English

Create Custom PDF

This document Enter keywords or a product name

Advanced Search

Home / SAP Cloud Integration / Development /

## Integration Flow Design Guidelines

As an integration developer, you need to make sure that you design integration flows in a robust fashion in order to safeguard

Integration Suite Cloud Integration

Discover / Discover (364)

ALL

guideline

11 package(s) found

Integration Flow Design Guidelines - Learn the Basics	Published Version: 3 Vendor: S
... Integration flows to illustrate the design guidelines for modeling integration flows.	
Integration Flow Design Guidelines - Enterprise Integration Patterns	Published Version: 3 Vendor: S
This integration package contains integration flows to illustrate the design of the ...	
Integration Flow Design Guidelines - Scripting Guidelines	Published Version: 3 Vendor: S
... Integration flows to illustrate the design guidelines for scripting. More details can ...	
[DEPRECATED] Cloud Integration - Exemplars	Published Version: 3 Vendor: S
... will find those in our Design Guidelines. Check the description for details.	
SAP S/4HANA Integration with External Tax Calculation Engines	Published Version: 3 Vendor: S
This integration package provides content required to integrate SAP Cloud Integration with ...	
Integration Flow Design Guidelines - Apply Highest Security Standards	Published Version: 3 Vendor: S
... Integration flows to illustrate the design guidelines for applying highest security standards.	
Integration Flow Design Guidelines - Handle Errors Gracefully	Published Version: 3 Vendor: S
... integration flows to illustrate the design guidelines for handling errors. More details ...	
Integration Flow Design Guidelines - Relax Dependencies to External Components	Published Version: 3 Vendor: S
... Integration flows to illustrate the design guidelines for relaxing dependencies to external ...	
Integration Flow Design Guidelines - Run an Integration Flow Under Well-Defined Boundary Conditions	Published Version: 3 Vendor: S
... Integration flows to illustrate the design guidelines for managing resources. More details ...	
Integration Flow Design Guidelines - Use the Partner Directory Appropriately	Published Version: 3 Vendor: S
... integration flows to illustrate the design guidelines for Partner Directory. More details ...	

Show More

# SAP Integration Solution Advisory Methodology


Proven approach to define your enterprise integration strategy

## Highlights

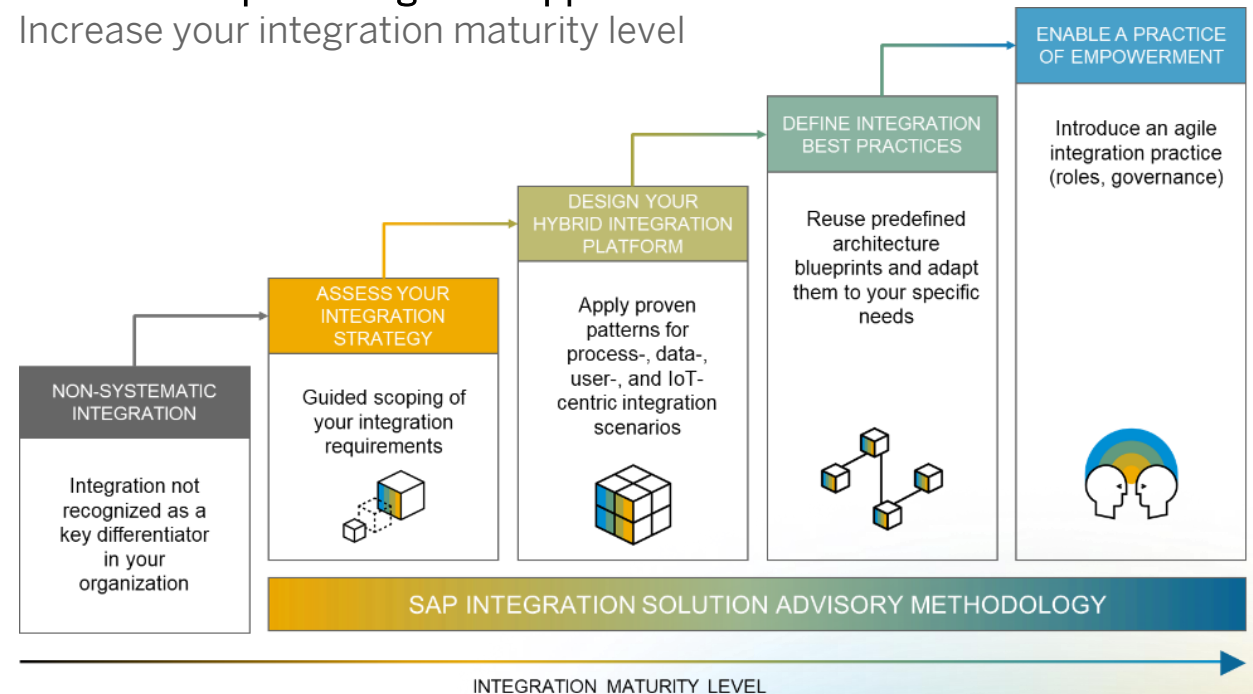
- Integration use-case patterns, architecture blueprints, and best practices
- 2000+ registered customers, partners, and consultants
- Coverage for all integration dimensions in today's hybrid and diverse environments

## Outlook

- Tool support: [Integration Assessment](#) capability as part of SAP Integration Suite

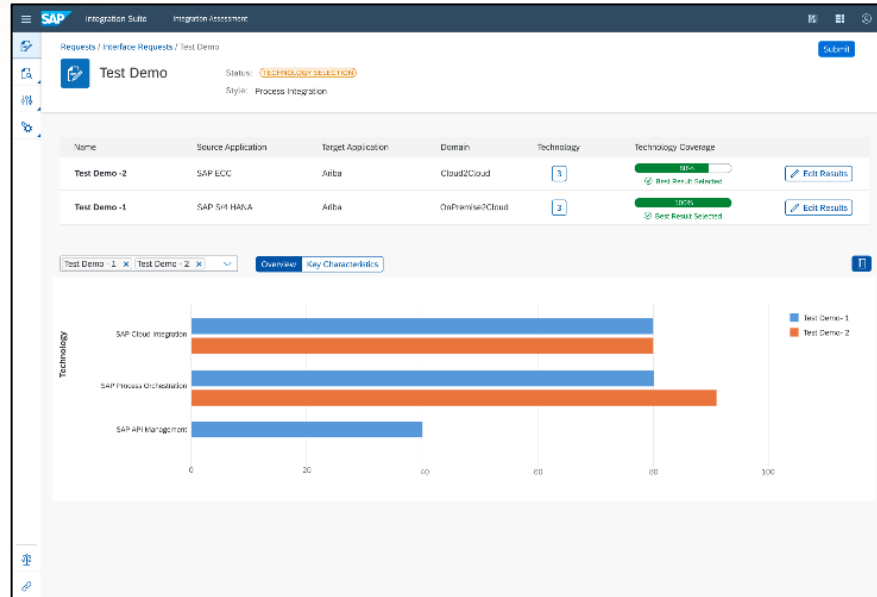
 [sap.com](https://sap.com) | [openSAP](#) | [Integration architecture guide](#)

Holistic enterprise integration approach  
Increase your integration maturity level



# Integration Assessment capability\*

Take a systematic approach to solving common integration challenges with best-practices methodology.



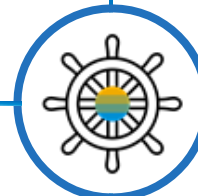
## Shape your integration technology strategy

- Tool-based approach for key parts of the SAP Integration Solution Advisory Methodology
- SAP's integration technology recommendations for a turnkey start
- Coverage for custom recommendations, including third-party applications and technologies



## Introduce integration governance

- Define policies to establish guidelines for the use of integration technologies within an organization
- Determine the most suitable integration technology for a specific integration scenario
- Improve the collaboration between integration architects, integration developers, and business domain experts



## Gain insights into your integration landscape

- Build an inventory of existing integration technologies
- Get an overview of the use of integration technologies across an application landscape
- Benefit from document integration requirements, technology proposal, and selection

# Take a strategic approach to modernizing integration

## Invest in innovation

“Lift-and-shift migrations, or the use of automated migration tools, fail to **capitalize on the rich functionalities and opportunities of a new integration platform.**”

## Automate where it matters

“**Testing** is a substantial part of the migration effort, and it consumes somewhere around **60% to 65% of the overall migration effort.**”

Source:

Abhishek Singh, [“How to Successfully Migrate to a New Integration Platform.”](#) Gartner Inc., October 2021. Gartner is a registered trademark and service mark of Gartner Inc. and/or its affiliates in the United States and internationally and is used herein with permission. All rights reserved.



### Self-service content and tools

- Integration strategy guides
- [Migration guides](#), blogs, videos
- Best practices
- Prebuilt content (api.sap.com)
- Tools for assessment, automated testing, and migration



### SAP Migration Factory for SAP BTP

#### Free assessment and planning

- 2-week to 3-week engagement
- SAP Process Integration and SAP Process Orchestration to SAP Integration Suite
- Cloud integration (neo to Cloud Foundry)
- Other products of SAP BTP (SAP HANA)



### SAP Services and Support

#### **Paid consulting services from SAP**

- Planning service
- Infrastructure setup service
- Implementation service



### Partners

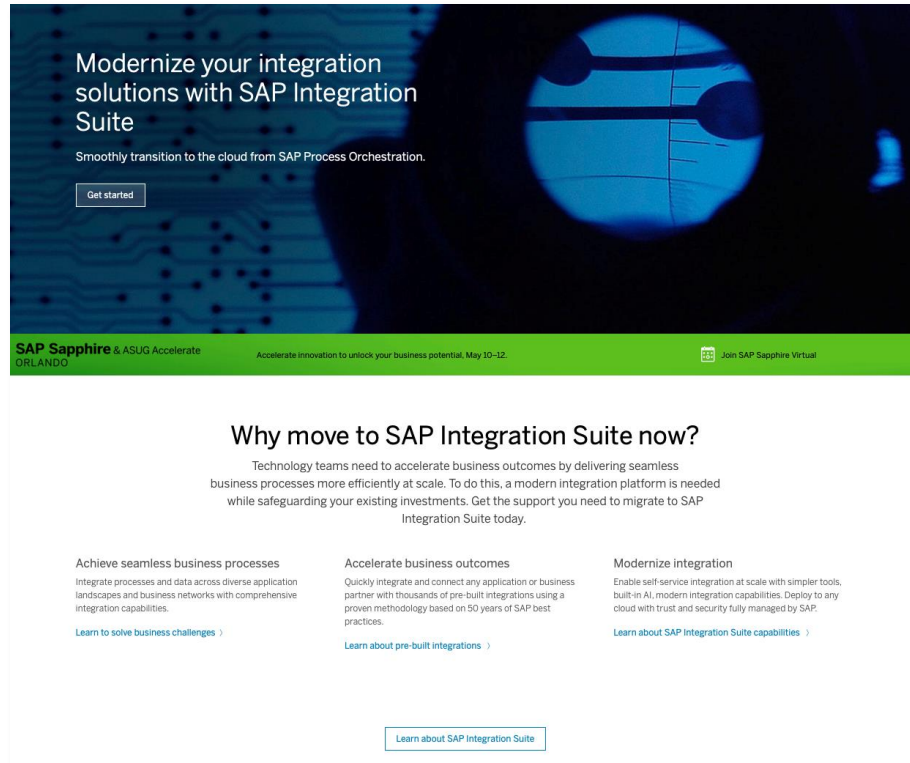
**Many partners available to support migration needs**



**Where can I get more information?**



# Find out more



## [Get support migrating to SAP Integration Suite](#)

Detailed self-service content and programs to support SAP Process Integration & Orchestration customers move to SAP Integration Suite

## Learn about SAP Integration Suite

Check out the [sap.com/integration](http://sap.com/integration) Web site, which has valuable resources for fast-tracking your knowledge of SAP Integration Suite and to help you get the highest quality answers quickly and easily from SAP experts.



### Engage our community

<http://community.sap.com/topics/integration-suite>



### Free tier

[Free tier model for SAP BTP](#)



### Customers

[SAP Integration Suite](#)



### Road map

[SAP Integration Suite](#)

## SAP is here to help.

Contact your local SAP representative

[sap.com/corporate/en/company/office-locations.html](http://sap.com/corporate/en/company/office-locations.html)

**Q & A**