



# ALM Community Call

## January 19, 2022

CXS Customer Communications and Relations, SAP SE

PUBLIC

# Disclaimer

The information in this presentation is confidential and proprietary to SAP and may not be disclosed without the permission of SAP. Except for your obligation to protect confidential information, this presentation is not subject to your license agreement or any other service or subscription agreement with SAP. SAP has no obligation to pursue any course of business outlined in this presentation or any related document, or to develop or release any functionality mentioned therein.

This presentation, or any related document and SAP's strategy and possible future developments, products and or platforms directions and functionality are all subject to change and may be changed by SAP at any time for any reason without notice. The information in this presentation is not a commitment, promise or legal obligation to deliver any material, code or functionality. This presentation is provided without a warranty of any kind, either express or implied, including but not limited to, the implied warranties of merchantability, fitness for a particular purpose, or non-infringement. This presentation is for informational purposes and may not be incorporated into a contract. SAP assumes no responsibility for errors or omissions in this presentation, except if such damages were caused by SAP's intentional or gross negligence.

All forward-looking statements are subject to various risks and uncertainties that could cause actual results to differ materially from expectations. Readers are cautioned not to place undue reliance on these forward-looking statements, which speak only as of their dates, and they should not be relied upon in making purchasing decisions.



# Introduction



# ALM Community Call: Agenda for January 19, 2022

## Focus topic: SAP Focused Run

Welcome and Introduction

ALM Community News

ALM News and Updates

- SAP Solution Manager
- SAP Cloud ALM
- SAP Focused Run



Interactive Poll

Upcoming Events and Webinars

Please use the Q&A tool in Zoom to ask your questions also during the presentation!

## Changes to the ALM Community Call

## We listened to your feedback!

In future calls, we will additionally

- provide first-hand information directly from **SAP Product Support**
- add more customer presentations\*
- share roadmap and planning information of our ALM offerings
- make sure that there is enough time for Q&A



\*Do you have an interesting ALM customer story to share? Reach out to us and become part of the ALM Community Call! Mail us at [sap\\_cxs\\_social\\_media@sap.com](mailto:sap_cxs_social_media@sap.com)!



# Speakers & Background Experts



Ben Schneider



Tonja Kehrer



Tim Steuer



Stefan Lahr



Cay Rademann



John Krakowski Jr.



Evan Stoddard

# The Application Lifecycle Management Product Portfolio of SAP



# The Application Lifecycle Management Product Portfolio of SAP





# ALM Community News



# ALM Community News

The screenshot shows the SAP Community website interface. The top navigation bar includes links for SAP, Community, Topics, Groups, Answers (highlighted with a yellow box), Blogs, Events, Programs, Resources, and What's New. Below the navigation bar, there's a search bar with the text 'Search the SAP Community' and a magnifying glass icon. The main content area displays search results for 'SAP Cloud ALM'. It shows three questions with their titles, authors, and update times. The first question is 'Signavio and Cloud ALM in SAP Cloud ALM Expert Community Call on January 12, 2022' by Leena Nissila. The second is 'Using Cloud ALM Changemanagment in a AMS Project' by Satyabrata Mohanty. The third is 'Delete Project in Cloud ALM' by Tatiana Dolezalova. On the right side, there are filters for Content Types, Question Types, Tags, and Languages.

SAP | Community Topics Groups **Answers** Blogs Events Programs Resources What's New

Home > Community Ask a Question Write a Blog Post ...

Search the SAP Community

Search the SAP Community

Q&A Focused Build for SAP Solution Manager Focused Insights for SAP Solution Manager SAP Cloud ALM Clear Filters

SAP Focused Run SAP Solution Manager

33194 results Sort by: Relevance | Last updated

Question | Leena Nissila | updated an hour ago 1 0  
Signavio and Cloud ALM in SAP Cloud ALM Expert Community Call on January 12, 2022  
SAP Cloud ALM

Question | Satyabrata Mohanty | updated 2 hours ago 0 0  
Using Cloud ALM Changemanagment in a AMS Project  
SAP Cloud ALM

Question | Tatiana Dolezalova | updated 3 hours ago 1 0  
Delete Project in Cloud ALM  
SAP Cloud ALM | SAP Activate

CONTENT TYPES >

QUESTION TYPES >

TAGS  
☐ All Tags >  
☐ Followed Tags >

LANGUAGES >



## Q&A | SAP Community

- Ask questions
- Use tags
- Find answers
- Vote on contributions
- Follow the discussion
- 2.0 h median time to answer

**DEMO**



# Community News

1.

[Join the ALM Community](#)

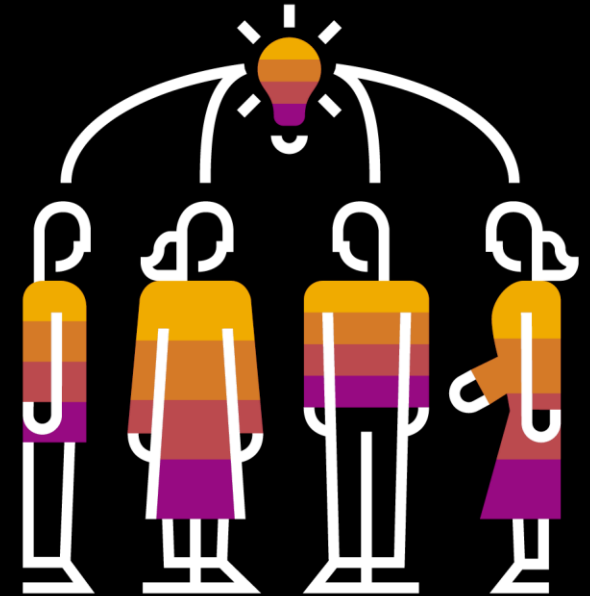
2.

Follow the tags

[SAP Cloud ALM](#), [SAP Solution Manager](#), [SAP Focused Run](#)

3.

Ask your questions to peers and experts!





# ALM News & Updates



# SAP Solution Manager



# What's New in SAP Solution Manager 7.2 SPS14

Lab Preview

## Highlights of planned innovations:

- **Process Management**

- Automatic generation of all used Fiori apps based on real system data in the Executable Library
- Value help when documenting Fiori apps manually



- **Test Suite**

- External test tool synchronization can send execution results to test packages in the Test Suite
- Edit test documents online with any supported browser
- Where-used list in the Test Repository to find where a test script is used

- **Solution Operations**

- Improved management of outages that span over a month's end in Service Availability Management
- Direct navigation from a Job Alert to the managed system
- Job documentation reorganization report enhanced to remove obsolete documents after a retention period

- **Configuration**

- SAP Passport can now be used when connecting to SAP instead of user/password authentication

# SAP Customer Connection for SAP Solution Manager (incl. Focused Build)

**Accepted Requests  
Process Management: 19**

**Accepted Requests  
Test Suite: 21**

**Accepted Requests  
Change and Release Management: 27**

## **Last milestone (November 23<sup>rd</sup>):**

Communication of accepted improvement requests during the selection call.

## **Current activities:**

Development of accepted improvement requests

## **Next milestone (TBD):**

Communication of developed improvement requests during the delivery call.



# SAP Cloud ALM

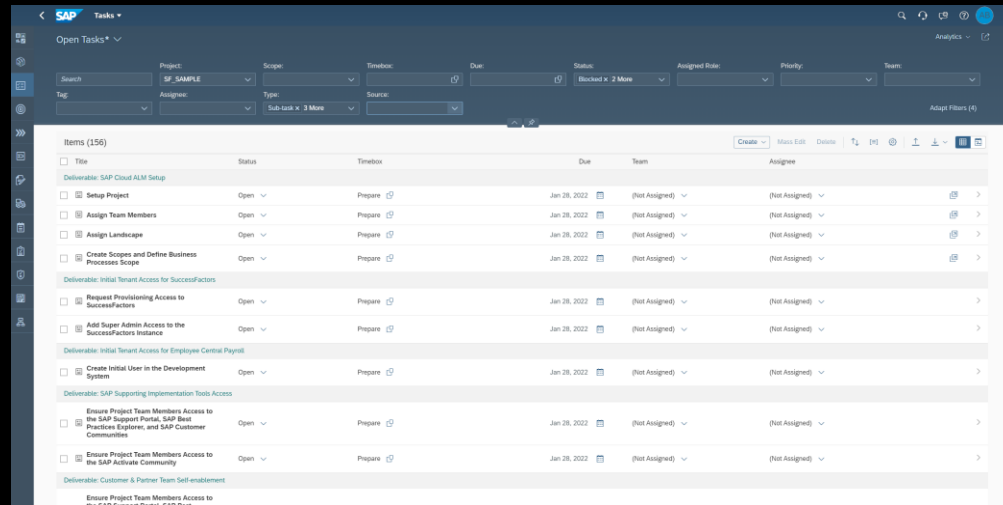


# Implementation Content for SAP Success Factors

Available since December 2021:

## SAP Activate methodology for SuccessFactors

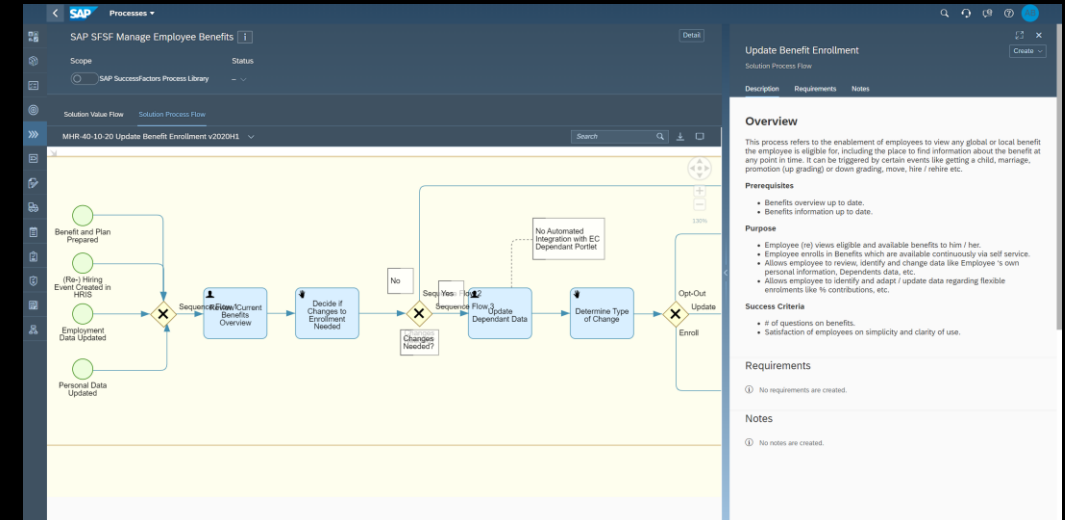
- 156 tasks



Title	Status	Timeline	Due	Team	Assignee
<b>Deliverable: SAP Cloud ALM Setup</b>					
Setup Project	Open	Prepare	Jan 26, 2022	(Not Assigned)	(Not Assigned)
Assign Team Members	Open	Prepare	Jan 26, 2022	(Not Assigned)	(Not Assigned)
Assign Landscape	Open	Prepare	Jan 26, 2022	(Not Assigned)	(Not Assigned)
<b>Deliverable: Initial Tenant Access for SuccessFactors</b>					
Request Provisioning Access to SuccessFactors	Open	Prepare	Jan 26, 2022	(Not Assigned)	(Not Assigned)
Add Super Admin Access to the SuccessFactors Instance	Open	Prepare	Jan 26, 2022	(Not Assigned)	(Not Assigned)
<b>Deliverable: Initial Tenant Access for Employee Central Payroll</b>					
Create Initial User in the Development System	Open	Prepare	Jan 26, 2022	(Not Assigned)	(Not Assigned)
<b>Deliverable: SAP Supporting Implementation Tools Access</b>					
Ensure Project Team Members Access to the SAP Support Portal, SAP Best Practices Explorer, and SAP Customer Communities	Open	Prepare	Jan 26, 2022	(Not Assigned)	(Not Assigned)
Ensure Project Team Members Access to the SAP Activate Community	Open	Prepare	Jan 26, 2022	(Not Assigned)	(Not Assigned)
<b>Deliverable: Customer &amp; Partner Team Self-enablement</b>					
Ensure Project Team Members Access to the SAP Success Portal, SAP Best					

## SAP SuccessFactors process library content

- 12 solution scenarios with 29 solution processes



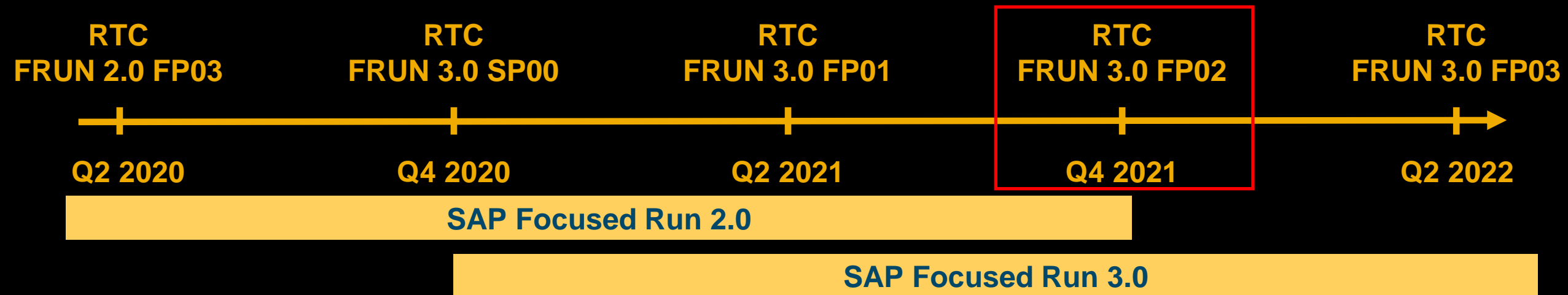
Using the implementation content in SAP Cloud ALM can accelerate SAP SuccessFactors implementations

# SAP Focused Run



# SAP Focused Run – Release Strategy

- **Continuous delivery of new innovations** based on customer feedback
- Keeping functional focus on **application operations for hybrid landscapes**
- **Three year release cycles** with delivery of **two delivery units per year** → **One year overlap** to change to next release
- **Regular technology updates** for ABAP, HANA and SAPUI5 to use latest innovations





# SAP Focused Run – Scope in detail

**Advanced Integration Monitoring** – Focused on correlation of e2e message flows and integration related exceptions

Example

**Advanced User Monitoring** – Focused on end user performance and utilization based on real as well as synthetic user activities

Example

**Advanced Application Management** – Focused on application aspects as monitoring of application healthiness and jobs as well as service availability, IT calendar and work mode management

Example

**Advanced Configuration Monitoring** – Focused on monitoring of configuration & software changes including validation of security policies

**Advanced System Management** – Focused on monitoring of systems, databases, and hosts as well as EarlyWatch Alert, license management and remote service delivery

**IT Infrastructure Monitoring** – Focused on monitoring of technical infrastructure components (no own visibility in this layer)

## Advanced Alert & Event Management

Calculation of specific alerts based on pre-defined thresholds

Unified alert inbox & alert handling procedures

Correlation of alerts to alert clusters to point more efficient to the root cause of an issue

## Advanced Root Cause Analysis

Dedicated RCA capabilities as system analysis, trace analysis and file system browser

Works on real-time raw data as well as aggregated historical data

Formalizes collected analysis knowledge to guided RCA

## Operation Automation

Execution of manual or automated actions triggered by alerts to increase resolution efficiency by time reduction

Automation of regular operations tasks to increase operation efficiency and quality

## Advanced Analytics & Intelligence

Provides flexible dashboards for data coming from different use cases (cross use case analytics)

Uses AI capabilities to derive intelligent decisions

Standardizes open API's for efficient data transfer

Example

# Advanced Integration Monitoring



# Integration and Cloud Monitoring



New features are:

- **New Monitoring content for :**

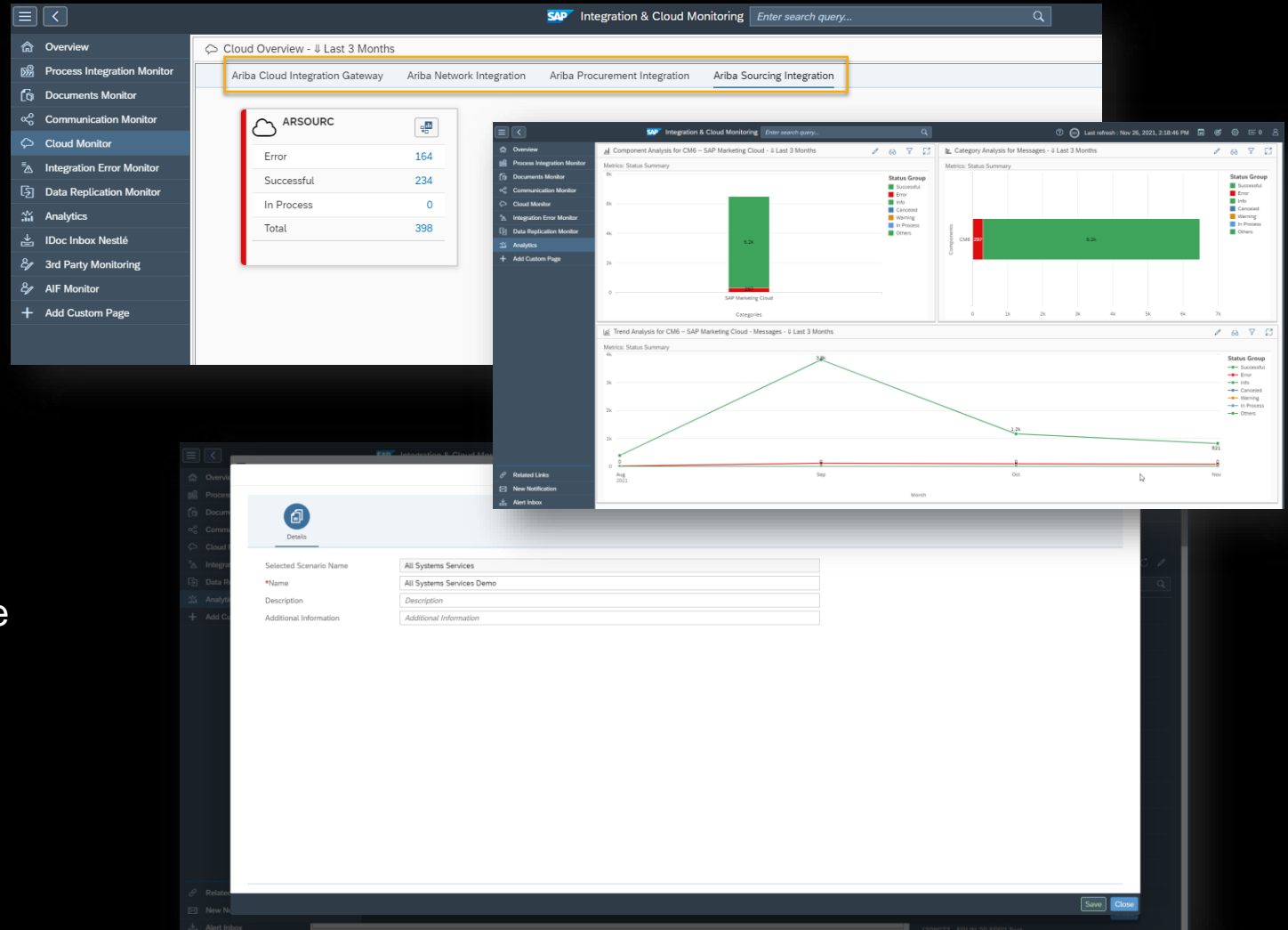
- SAP Ariba
  - SAP Ariba CIG (Cloud Integration Gateway)
  - SAP Ariba Procurement
  - SAP Ariba Sourcing
  - SAP Ariba Network

- **New content for Analytics:**

- SAP Marketing Cloud
- SAP Fieldglass
- New metrics for SAP Cloud Integration Suite

- **New in configuration:**

- Functionality to copy Scenarios





# Advanced User Monitoring





# Real User Monitoring 1/2

Real User  
Monitoring



New features are:

- Additional fields from **statistic records** displayed in **Correlation view** like Top n Table accesses and HANA Metrics (requires ST-PI 7.40 SP16)
- New Request Type **RFCS** for Secure Network Communications (SNC) enabled RFC requests (requires ST-PI 7.40 SP16)

The screenshot displays the SAP Real User Monitoring interface with several overlapping panels:

- Details Panel (Top):** Shows a table of table accesses.

Table Name	Direct Reads	Sequential Reads	Changes	Time (ms)
BALDAT	0	0	632	162
ACCONEXTDIR	0	196	0	104
ACTEMPLATEASSIGN	0	448	0	99

- Request Overview Panel (Bottom):** A table listing various requests with their types and status summaries.

Application/Request Name	Type	Status Summary
SRSM_SEND_AGENT_CONFIG	RFC	[Red bar]
MAI_CLC_TRIGGER_ACC_SERVICES	RFC	[Red bar]
FM_SUM_UPDATE_ROBOT_STATUS	RFC	[Red bar]
/SDF/E2E_EFWKE_DATA_CONNECTOR	RFC	[Red bar]
/SDF/E2E_DISPATCHED_COLLECTOR	RFC	[Red bar]
COF_IQP	RFC	[Red bar]
/SDF/ASR_READ_AGGR_ONE_INST	RFC	[Red bar]
/sap/bc/rest/ajmdataservice/runtime	HTTP	[Red bar]
TASK_VITAL_PERIOD	RFC	[Red bar]
BGRFC_CHECK_SCHEDULERS	RFC	[Red bar]
SUM with FESR on FD4	SAPUI5	[Red bar]
EM_INBOUND_CONNECTOR	Web Dynpro	[Red bar]

- Request Details Panel (Right):** Shows details for request FD4ADM.

**FD4ADM**  
ABAP  
ldclfd4\_FD4\_04

Request Name: MAI\_CLC\_TRIGGER\_ACC\_SERVICES  
Action: SAPMAI\_CLC\_SERVICES  
User Name: FRN\_BTIC\_MAI

Resp. Time (Gross): 12,194 ms  
Proc. Time (Net): 5,956 ms  
CPU Time: 3,250 ms  
DB Time: 2,983 ms  
Wait Time: 1 ms

- Filter Panel (Bottom Right):** Shows filters for the request overview.

Time Range: Inherited

Request Types: RF...

Request Name: [ ]

Ratings: [ ]

User: [ ]

Systems: [ ]

Location Filter: [ ]

User Type: [ ]

Instance Name: [ ]

Transaction ID: [ ]

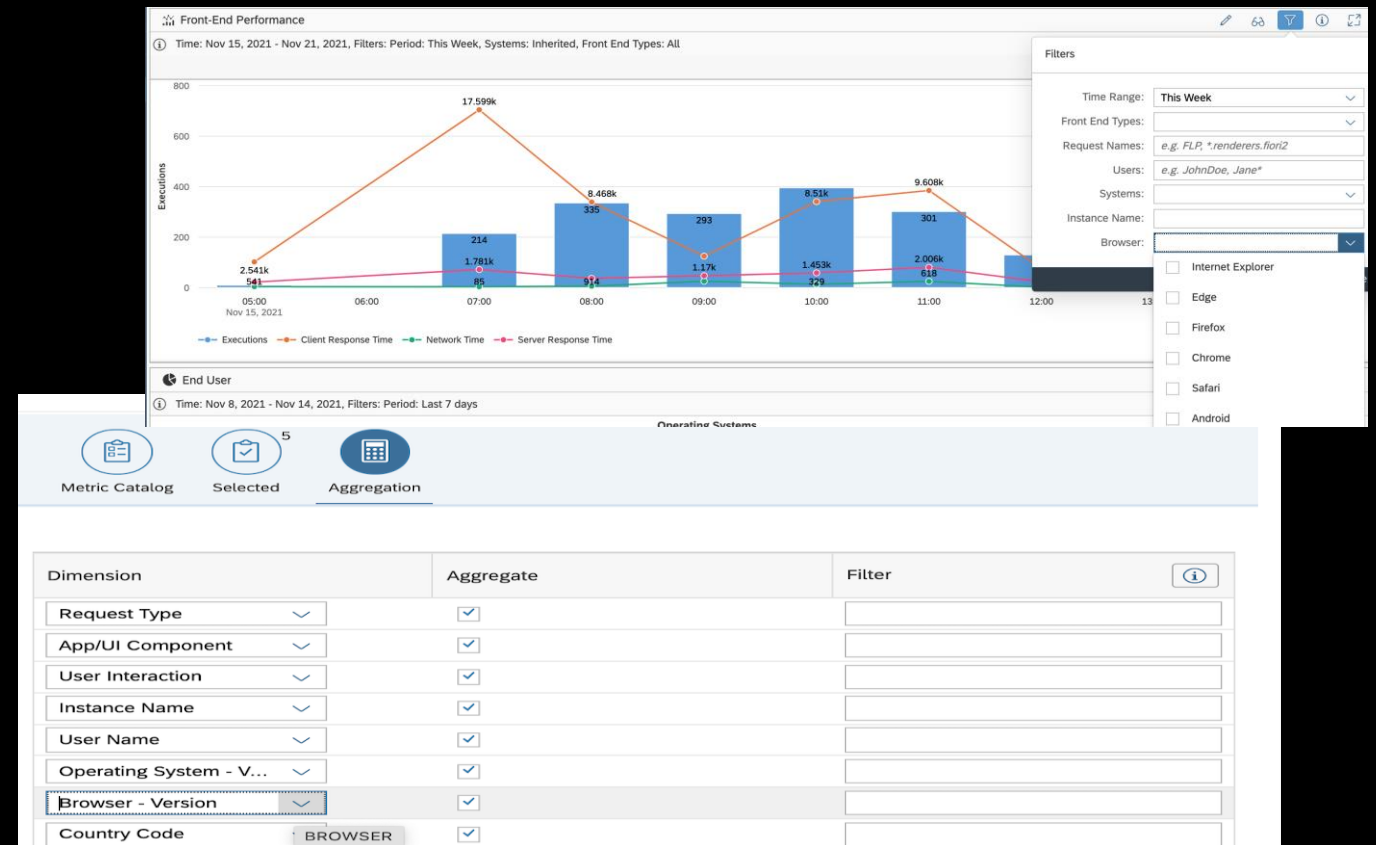
Max. No. of Hits: [ ]

# Real User Monitoring 2/2



New features are:

- Accept metrics from **cloud services** like SAP Integrated Business Planning via **SAP Cloud ALM proxy**
- New Filter in **Front End view** for **Browser types**
- New Filter for **Browser Version** in capability RUM UI Metrics in **Generic View**



# **Demo:** Real User Monitoring



# Synthetic User Monitoring

New features are:

- **Thresholds mass adjustment**, based on previous executions statistics
- **Real User Monitoring integration**:  
For Selenium based scenarios:
  - monitored SAP UI5 applications, correlation of the SUM executions with the RUM metrics (Jump-In to RUM)
- Support of new commands for Selenium scenarios:
  - **Conditional** commands (If, Else If, Else)
  - **Set Speed** command
- Improved **History views** chart:
  - Zooming
  - Executions validity and duration

Adjust Thresholds

Target

\*Adjust thresholds at: Scenario level

\*Select Locations to consider for the statistics calculation: Robot\_Orlando Robot\_Paris

Select all Deselect all

Rules

☒ Adjust Green-to-Yellow thresholds

\*Factor: 110 % of Average value ☐ with a minimum of 1000 ms

☒ Adjust Yellow-to-Red thresholds

\*Factor: 220 % of Average value ☐ with a minimum of 2000 ms

Settings

Consider statistics of the last 2 days

☐ Update only if the Adjusted value is higher than the Current one

☐ Delete all Scenario-on-Location thresholds

Selected scope

Step Name
entrance
searchFRUN
accessExpertPortal
accessSUMpage
backToFRUN

Simulate Cancel





# Advanced Application Management





# Job & Automation Monitoring



**Job & Automation Monitoring** is a new application, designed to offer a unified monitoring for all kind of jobs and automations (e.g. SAP Business Workflow).

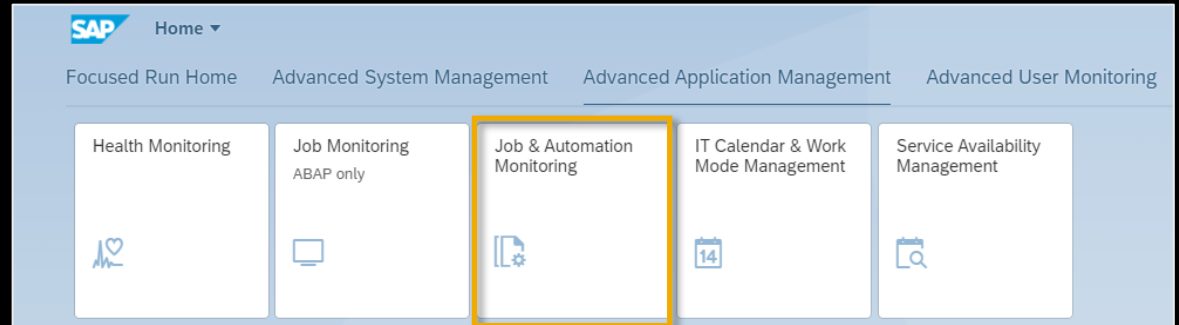
## ❑ With SAP Focused Run 3.0 FP02

- ✓ offers monitoring for ABAP jobs and BW Process Chains
- ✓ covers many features of Job Monitoring (ABAP only) (see next slide).

## ❑ With SAP Focused Run 3.0 FP03

- ✓ will cover all features of Job Monitoring (ABAP only)
- ✓ will offer monitoring for S4/HANA Application Jobs, Intelligent Robotic Process Automation Jobs and further job types
- ✓ will offer job execution data analysis (e.g. for runtime, failure rate ...)

## ❑ With SAP Focused Run 4.0 Job Monitoring (ABAP only) will be retired.



New application, that will replace existing “Job Monitoring (ABAP only)”

# Feature Comparison in SAP Focused Run FP02

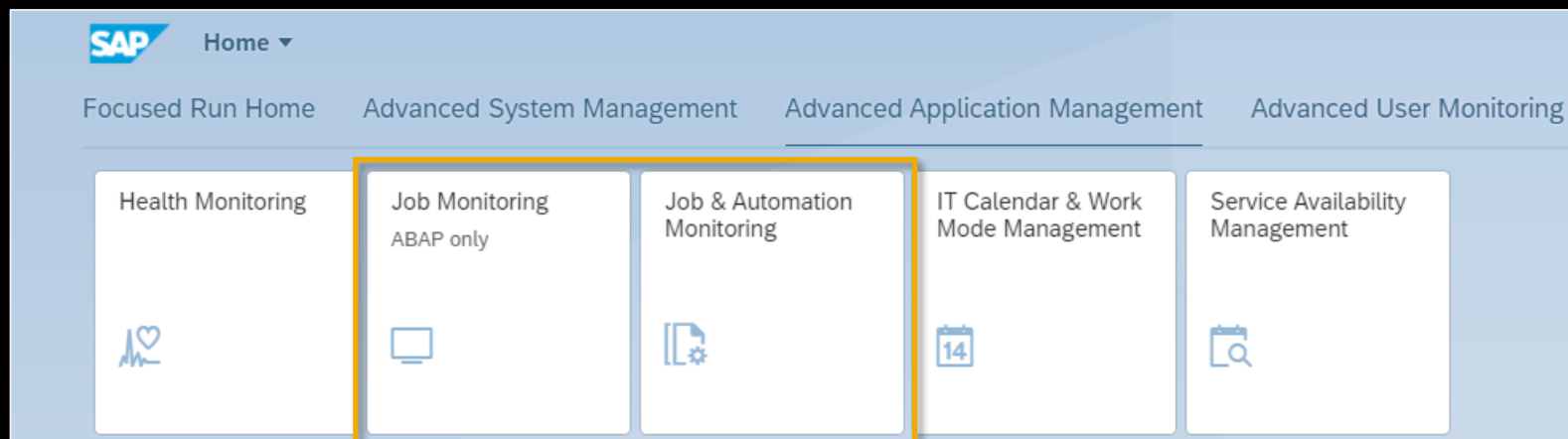
In FP02 **Job & Automation Monitoring** can replace the existing **Job Monitoring (ABAP only)** in many aspects. The table below shall help you understand, if your use case is already covered or if you better wait for FP03. However, please note that no migration of the monitoring configuration is planned.

Capability (as regards ABAP jobs)	Job Monitoring ABAP only	Job & Automation Monitoring
Alert if a job scheduled by Job Repository fails	✓	✓
Alert if a specific job fails or runs too long	✓	✓
Alert if a job writes a <u>specific</u> job log message	✓	✗ FP03*
Alert if a job writes a critical application log message (i.e. warning or error)	✗	✓
Alert if a daily or more frequent job does not run, that shall run	✓	✗ FP03
Alert if a job does run, that shall not run	✓	✗ FP03
Alert only if a job fails several times in a row	✓	✗ FP03
Alert if a job that executes report A fails	✓	✓
Outbound Notification	✓	✓

\* Integration with exception monitoring planned for FP03



# Job & Automation Monitoring – General Comparison



General capability of new application	Job Monitoring ABAP only	Job & Automation Monitoring
Monitoring of all ABAP jobs (including “Standard Jobs”)	✓	✓
Monitoring of all BW Process Chains	✗	✓
Monitoring of further job types (S/4HANA CE Application Jobs, Intelligent RPA Jobs, ...)	✗	✓ FP03
Seamless navigation from central monitor to local monitor for failed job executions	✗	✓
Monitoring of job execution for (specific) application errors (e.g. SLG1 log messages in case of ABAP)	✗	✓
Job execution data analysis (e.g. for runtime, failure rate, deterioration ...)	✗	✓ FP03
Monitoring for SAP NetWeaver Basis Versions (for ABAP Job Monitoring)	7.1 & above (starting ST-PI 700 SP22 & ST-PI 740 SP12)	7.4 & above (starting ST-PI 740 SP16)

# Demo: Job Monitoring





# Advanced Analytics & Intelligence

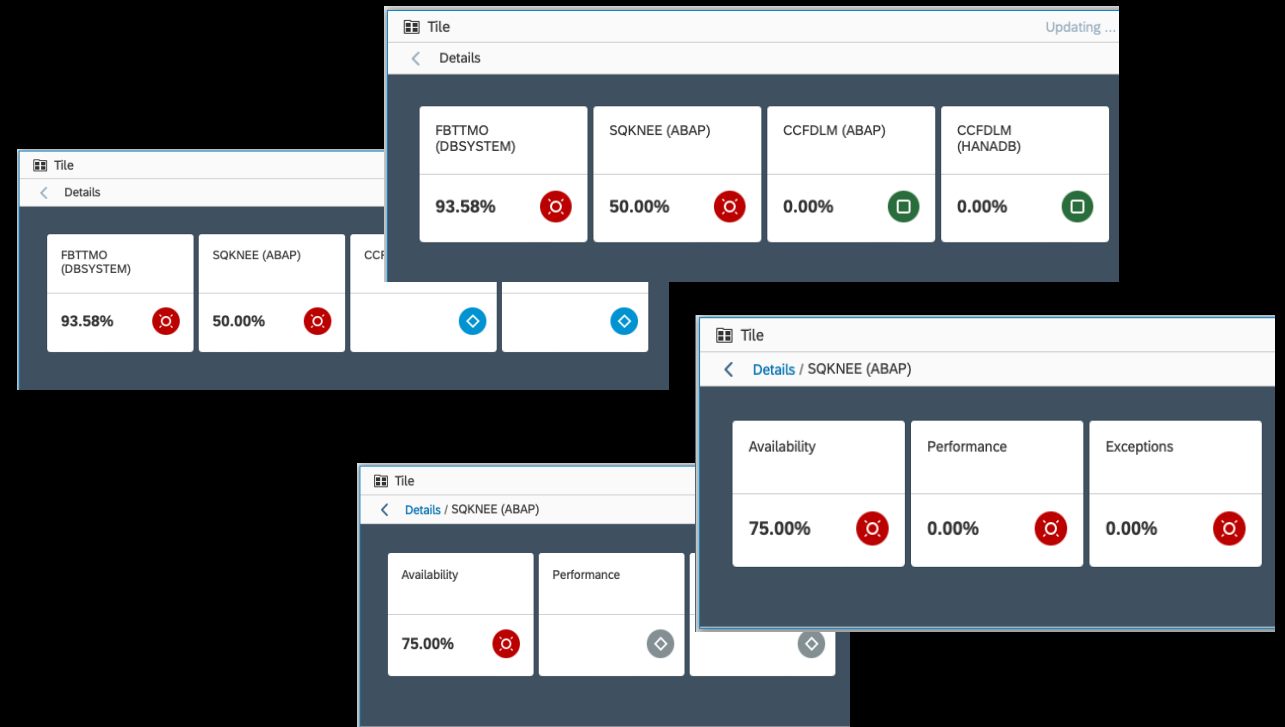
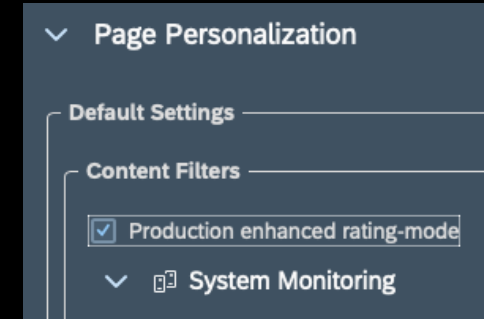
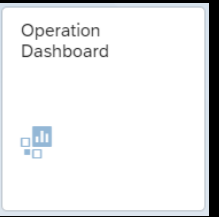




# Operation Dashboard

New Operation Dashboard features are:

- New “**Production enhanced**” rating mode
  - When this option is selected, blue tiles are displayed as green
  - Grey Tiles (grey metrics/alerts) will be rated as red





# Tactical Dashboard

New Tactical Dashboard features are:

- **Latest patch level** for Software Components is displayed in the **Maintenance Scenario**
- **Java Systems** are now fully supported in the **Maintenance Scenario**

Support Packages and Components

Software Component	Version	Patch Level	Latest Available Patch Level
DMIS 2011_1_731	2011_1_731	18	20
PI_BASIS 7.31	731	27	29
SAP ABA 7.31	731	27	29
SAP BASIS 7.31	731	27	29
SAP BW 7.31	731	27	29
SAP NW 7.31 BI CONT ADDON 7.47	747	34	37
ST-A/PI 01T_731	01T_731	03	3
ST-PI 2008_1_710	2008_1_710	23	25

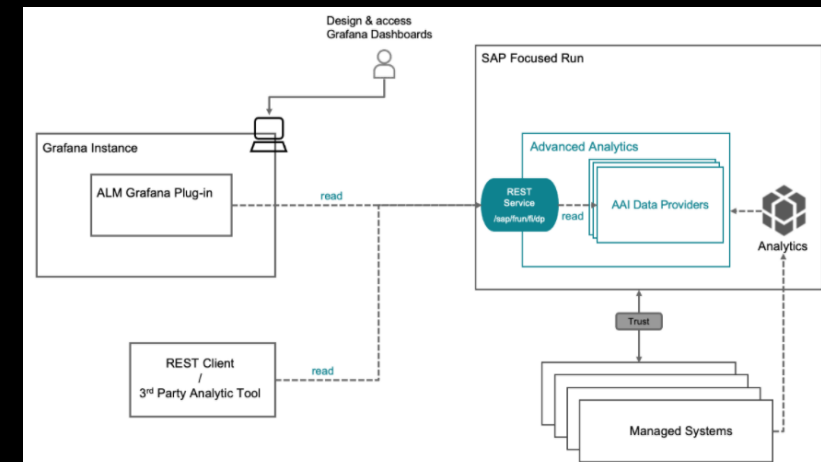
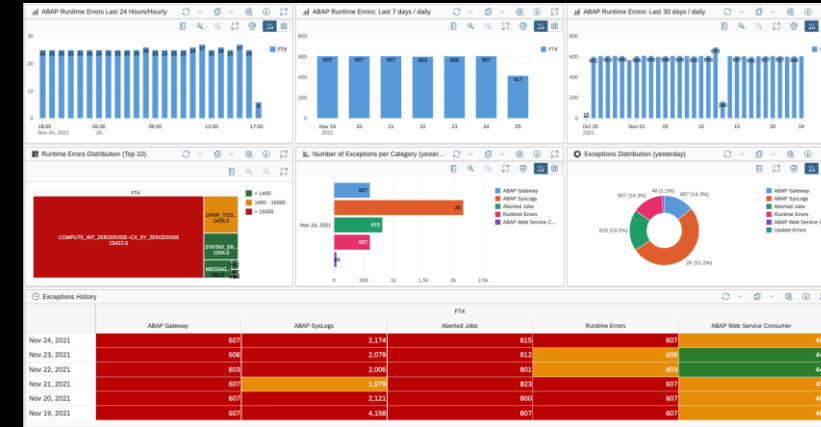
Support Packages and Components

Software Component	Version	Patch Level	Latest Available Patch Level
ADOBE DOCUMENT SERVICES 7.50	7.50	19	22
AJAX RUNTIME 7.50	7.50	19	22
ATS TEST TOOL 7.31	7.31	13	0
BI BASE EXPORT SERVICES 7.50	7.50	19	22
BI BASE FOUNDATION 7.50	7.50	19	22
BI BASE SERVICES 7.50	7.50	19	22
BI INFORM. BROADCASTING 7.50	7.50	19	22
BI REPORTING AND PLANNING 7.50	7.50	19	22
BI UDI 7.50	7.50	19	22
BI WEB APPLICATIONS 7.50	7.50	19	22
BI WEBDYNPRO ALV 7.50	7.50	19	22
CA - INTROSPECT BCI VIA SM 8	8	25	25
COMPOSITION BUILD TOOL 7.50	7.50	19	22
CRM JAVA APPLICATIONS			

# OCC Dashboard (1/3)

New OCC Dashboard features are:

- New **Exception Monitoring** Data Provider to display exceptions for all categories (Runtime, Syslog, Gateway etc)
- New **Scope Selection** tab to dynamically select list of systems based on **LMDB and custom attributes** – Custom attributes are supported using “Saved Views”
- **REST API** to provide external data access -> e.g. **ALM Grafana Plugin** or generic third party analytic tools

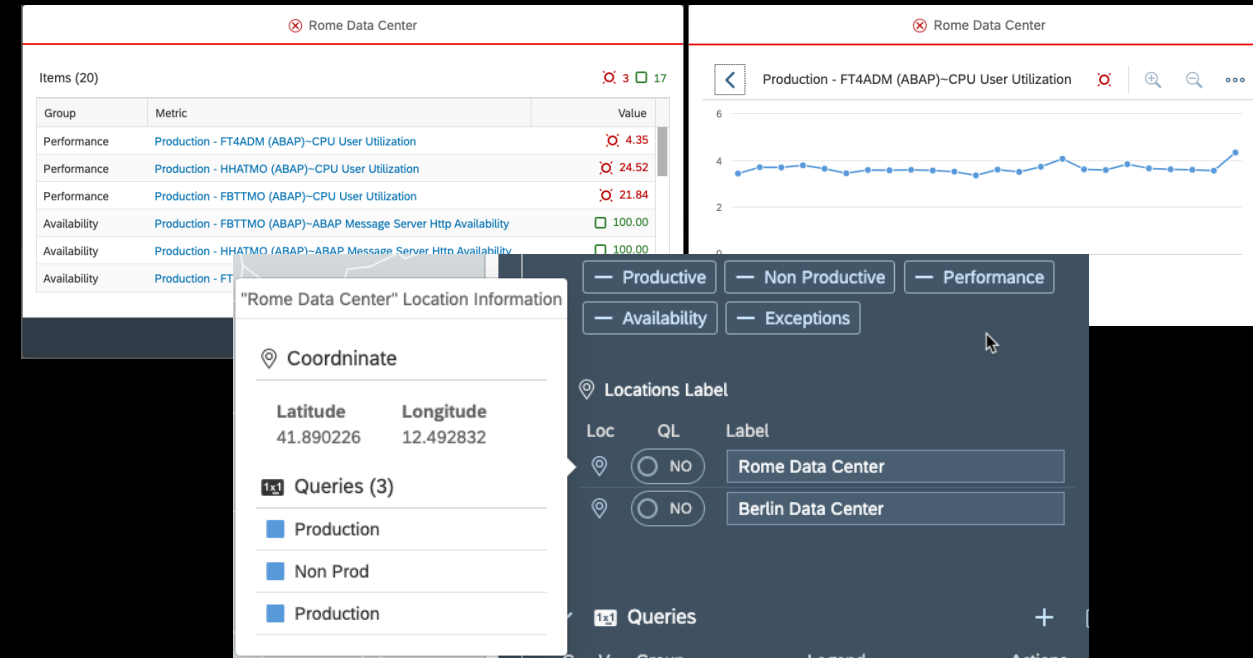
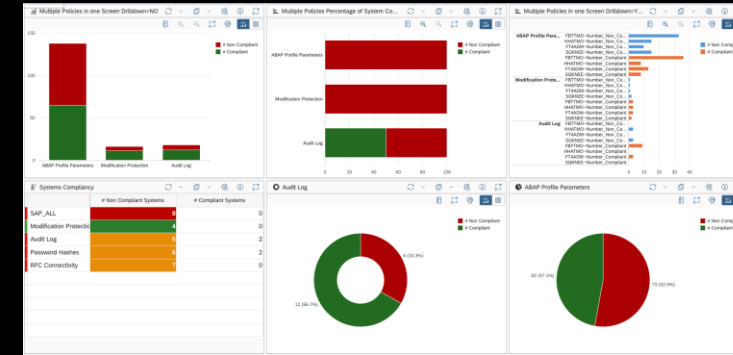


# OCC Dashboard (2/3)

New OCC Dashboard features are:

- Additional metrics for **CSA Data Provider** with system drilldown options
  - Percentage of (non) Compliant Systems
  - Number of (non) Compliant Systems
- Location Grouped Queries in **Analytic Map Renderer** with Jump-in capabilities
- Transpose option for **SLR Table History** renderer
- Hide metrics option for **SLR Table** renderer

OCC Dashboards



# OCC Dashboard (3/3)

New OCC Dashboard features are:

- New metrics for the **Service Availability Management** Data Provider
  - **Availability and SLA** (% and minutes)
  - **Outage List** (with Dynamic Table Renderer)
- Additional KPIs available for **Health Monitoring – Application check** (Limit, Usage and Calculated Rating)

Availability and SLA

	Percentage				Minutes			
	HHATMO-ABAP_THRESHOLD	HHATMO-ABAP_AVAILABILITY	FTACDM-ABAP_THRESHOLD	FTACDM-ABAP_AVAILABILITY	HHATMO-ABAP_THRESHOLD	HHATMO-ABAP_AVAILABILITY	FTACDM-ABAP_THRESHOLD	FTACDM-ABAP_AVAILABILITY
Nov 2021	99.90	92.99	99.80	100.00	42,737.00	40,143.05	42,737.00	43,170.00
Oct 2021	99.90	72.90	99.80	99.99	44,162.00	32,521.62	44,162.00	44,592.93
Sep 2021	99.90	97.23	99.80	100.00	42,737.00	41,979.95	42,737.00	43,167.93
Aug 2021	99.90	99.81	99.80	99.99	44,162.00	44,522.88	44,162.00	44,604.00
Jul 2021	99.90	99.20	99.80	99.94	44,162.00	44,252.93	44,162.00	44,582.00
Jun 2021	99.90	99.72	99.80	100.00	42,737.00	43,048.97	42,737.00	43,170.00
May 2021	99.90	99.85	99.80	97.14	44,162.00	44,544.05	44,162.00	43,332.08
Apr 2021	99.90	99.78	99.80	100.00	42,737.00	43,072.88	42,737.00	43,168.98

Gadget

SYSTEMID	START_TIME	END_TIME	OUTAGE_DURATION	TYPE	STATUS	CATEGORY	REASON	IMPACT	COMMENTS	SOURCE
FTACDM ABAP	Week 50 of 2020	Week 50 of 2020	180	Planned	New	General				Workmode
FTACDM ABAP	Week 51 of 2020	Week 51 of 2020	180	Planned	New	General				Workmode
FTACDM ABAP	Week 51 of 2020	Week 3 of 2021	40380	Unplanned	New	General	Reason	Business Impact for Outage	Other Comments	
FTACDM ABAP	Week 51 of 2020	Week 3 of 2021	40380	Unplanned	New	General	Reason	Business Impact for Outage	Other Comments	
FTACDM ABAP	Week 52 of 2020	Week 52 of 2020	180	Planned	New	General				Workmode
FTACDM ABAP	Week 53 of 2020	Week 53 of 2020	180	Planned	New	General				Workmode
FTACDM ABAP	Week 2 of 2021	Week 2 of 2021	180	Planned	Confirmed	General				Workmode
FTACDM ABAP	Week 3 of 2021	Week 3 of 2021	180	Planned	New	General				Workmode
FTACDM ABAP	Week 3 of 2021	Week 3 of 2021	118	Planned	New	General				Workmode

Application: calm.run

	Value	Limit	cf.memory.usage		Value	Limit	cf.disk.usage	
			Usage %	Rating			Usage %	Rating
Nov 26, 2021	584.04	1,024.00	57.04		192.99	400.00	48.25	
Nov 25, 2021	584.04	1,024.00	57.04		192.99	400.00	48.25	
Nov 24, 2021	584.04	1,024.00	57.04		192.99	400.00	48.25	
Nov 23, 2021	584.04	1,024.00	57.04		192.99	400.00	48.25	
Nov 22, 2021	584.04	1,024.00	57.04		192.99	400.00	48.25	

HTTP

	Certificate Validity			Response Time			Status Code		
	SAP Corporate Portal Page	System FD4 (ABAP)	System FT4 (ABAP)	SAP Corporate Portal Page	System FD4 (ABAP)	System FT4 (ABAP)	SAP Corporate Portal Page	System FD4 (ABAP)	System FT4 (ABAP)
Nov 26, 2021, 15:00	342	193	193	303.00	213.00	201.00	200	200	200
Nov 26, 2021, 14:00	342	193	193	520.00	404.00	394.00	200	200	200
Nov 26, 2021, 13:00	342	193	193	286.00	199.00	153.00	200	200	200
Nov 26, 2021, 12:00	342	193	193	265.00	166.00	146.00	200	200	200
Nov 26, 2021, 11:00	342	193	193	308.00	192.00	178.00	200	200	200
Nov 26, 2021, 10:00	342	193	193	279.00	163.00	142.00	200	200	200
Nov 26, 2021, 09:00	342	193	193	306.00	201.00	176.00	200	200	200
Nov 26, 2021, 08:00	342	193	193	319.00	200.00	187.00	200	200	200



# **Demo:** Advanced Analytics





# Further Information



# SAP Focused Run – Content Roadmap

Currently Available (see details in <a href="#">SAP Focused Run Expert Portal</a> )				Planned	
Integration & Cloud Monitoring	SAP S/4HANA Cloud & PCE SAP S/4HANA & SAP Business Suite SAP Integrated Business Planning SAP Marketing Cloud SAP Sales & Services Cloud SAP SuccessFactors SAP Ariba SAP Concur	SAP Fieldglass SAP Business ByDesign SAP Integration Suite (CI) SAP Cloud Integration for DS SAP BTP NEO (custom) SAP BTP ABAP (custom/SAP) SAP MII SAP Central Finance	SAP PI/PO SAP SLT SAP NetWeaver AS ABAP SAP NetWeaver AS Java SAP AIF (SAP S/4HANA) Microsoft IIS Adobe Document Services	SAP Concur (S/4HANA Add-On) SAP SuccessFactors HXM Suite SAP BTP CF (custom) SAP Analytics Cloud SAP AIF (SAP Business Suite)	SAP Logistics Business Network SAP Data Intelligence SAP Industry Cloud for Automotive
Real User Monitoring	SAP S/4HANA Cloud & PCE SAP S/4HANA & SAP Business Suite SAP Integrated Business Planning	SAP Marketing Cloud SAP Sales & Service Cloud SAP BTP NEO (custom)	SAP NetWeaver AS ABAP SAP NetWeaver AS Java SAP HANA XS Engine	SAP Analytics Cloud SAP BTP CF (custom)	
Health Monitoring	SAP Integration Suite (CI) SAP BTP NEO (custom)	Generic health checks (Availability of HTTP, RFC, Host, TCP/IP; OS scripts, OS processes, and Microsoft Windows services)		SAP S/4HANA Cloud SAP Integrated Business Planning SAP Marketing Cloud SAP Integration Suite (API Mgmt.)	SAP Intelligent RPA SAP BTP CF (custom) SAP BTP ABAP (custom/SAP) SAP HANA Cloud
Job Monitoring	SAP S/4HANA PCE SAP S/4HANA SAP Business Suite	SAP NetWeaver AS ABAP SAP Business Warehouse		SAP S/4HANA Cloud SAP Integrated Business Planning SAP Marketing Cloud	SAP Business Workflow (ABAP) SAP Intelligent RPA SAP BTP ABAP (custom/SAP)
Configuration & Security Analytics	SAP S/4HANA PCE SAP S/4HANA SAP Business Suite SAP Integration Suite (CI) SAP Cloud Connector	SAP Web Dispatcher SAP Host Agent SAP Business Objects SAP NetWeaver AS ABAP SAP NetWeaver AS Java	Databases: SAP HANA, SAP ASE, SAP MAX DB, Oracle, IBM DB6	SAP S/4HANA Cloud SAP Integrated Business Planning SAP Marketing Cloud	SAP HANA Cloud SAP BTP ABAP (custom/SAP) SAP BTP CF including SAP IAS
System Monitoring	SAP NetWeaver AS ABAP SAP NetWeaver AS Java SAP Business Objects SAP Cloud Connector SAP GW & WD	SAP Commerce SAP Convergent Charging SAP Portal Platform SAP PI/PO SAP SLT & DS	SAP MDM & TREX SAP Mobile Platform Apache Tomcat & Microsoft IIS Adobe Document Services Supported OS's / DB's		
System Analysis	SAP NetWeaver AS ABAP SAP NetWeaver AS Java SAP Cloud Connector	SAP Web Dispatcher SAP Business Objects SAP Data Services	Apache Tomcat SAP HANA & SAP ASE Supported OS's		

# Further Information

## **SAP Focused Run Support Portal:**

<https://support.sap.com/en/alm/sap-focused-run.html> -> SAP Focused Run – News with release 3.0 FP02

## **SAP Focused Run Expert Portal:**

<https://support.sap.com/en/alm/sap-focused-run/expert-portal.html> -> Release Notes, Upgrade Guides, ...

## **SAP Community:**

[SAP Focused Run – News with Release 3.0 FP02 | SAP Blogs](#)

## **SAP Focused Run What's New Call**

[Recording of the What's New Call for SAP Focused Run 3.0 FP02](#)



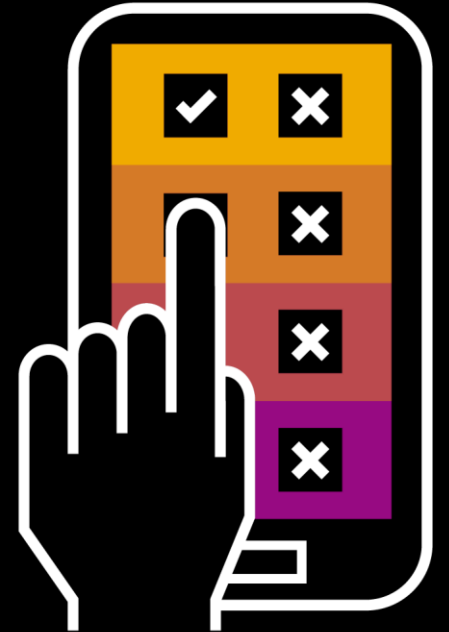
# Poll



# Let's ask some questions!



Please open [www.menti.com](https://www.menti.com)  
and use code 55 38 2  
<https://www.menti.com/cmowqwk1i1>





# Upcoming Events



# ALM Events: Save the date!

What's New in SAP Cloud ALM: **January 19 & 20**

DSAG ALM Thementage 2022: **January 25-26**

ASUG & SAP ALM Summit North America: **February 1-3**

What's New in SAP Solution Manager, Focused Build & Insights:  
**February 8, 9 & 10**

ALM Summit LAC: **March 30 & April 5-6**

DSAG Technologietage: **May 3-4**

DSAG CCOE Forum: **May 31 - June 1**



Find our ALM Events here:  
<https://support.sap.com/alm-events>



# ASUG & SAP ALM Summit NA

## Transformation starts today!

February 1 – 3, 2022 | 100% virtual experience

Learn about transformation to cloud, management of your IT solution on-premise, hybrid or in the cloud, and how to get the most value from your solutions!

- 3 interactive main event days
- 2 pre-event jumpstart sessions
- Lectures, meet-the-expert sessions, deep-dives
- Strategy keynotes

[Click to Register](#)



# Mark your calendar!

The next ALM Community Call will take place on

**February 16, 4pm CET / 10am EST.**

The focus topic of this call will be [SAP Solution Manager](#).

All registered participants will receive an e-mail invite for this call.



# Q&A



# Ask you questions here!

**Please ask your questions!**

Use the Q&A panel in the Zoom webinar to ask your questions.





# Thank you.

Contact information:

Benjamin Schneider, SAP SE  
[sap\\_cxs\\_social\\_media@sap.com](mailto:sap_cxs_social_media@sap.com)