



# ALM Community Call

## May 19, 2021

CXS Customer Communications and Relations, SAP SE

PUBLIC

# Disclaimer

The information in this presentation is confidential and proprietary to SAP and may not be disclosed without the permission of SAP. Except for your obligation to protect confidential information, this presentation is not subject to your license agreement or any other service or subscription agreement with SAP. SAP has no obligation to pursue any course of business outlined in this presentation or any related document, or to develop or release any functionality mentioned therein.

This presentation, or any related document and SAP's strategy and possible future developments, products and or platforms directions and functionality are all subject to change and may be changed by SAP at any time for any reason without notice. The information in this presentation is not a commitment, promise or legal obligation to deliver any material, code or functionality. This presentation is provided without a warranty of any kind, either express or implied, including but not limited to, the implied warranties of merchantability, fitness for a particular purpose, or non-infringement. This presentation is for informational purposes and may not be incorporated into a contract. SAP assumes no responsibility for errors or omissions in this presentation, except if such damages were caused by SAP's intentional or gross negligence.

All forward-looking statements are subject to various risks and uncertainties that could cause actual results to differ materially from expectations. Readers are cautioned not to place undue reliance on these forward-looking statements, which speak only as of their dates, and they should not be relied upon in making purchasing decisions.



# Introduction



# What is the ALM Community Call?

- A monthly call for the whole ALM community
- One focus topic, but news from all ALM areas
- Lots of room for product demos and Q&A with additional experts in the “back” to answer your questions



# ALM Community Call: Agenda for May 19, 2021

## Focus topic: SAP Solution Manager

Welcome and Introduction

ALM Community News

ALM News and Updates

- SAP ES Value Maps
- ALM Consulting

Poll

Upcoming Events and Webinars

Q&A



Please use the Q&A tool in Zoom to ask your questions also during the presentation!

# Speakers & Background Experts



Ben Schneider



Tonja Kehrer



Christoph Bechtloff



Robin Schoenwald



Tim Steuer



Cay Rademann



Evan Stoddard



John Krakowski Jr.



# The Application Lifecycle Management Product Portfolio of SAP



# ALM Community News





# ALM Community News



Technical Articles

**Andreas Heckmann**

April 30, 2021 5 minute read

## The Cloud Mindset: Engineering the Future of the Application Lifecycle

7 Likes 196 Views 0 Comments

By Andreas Heckmann, Executive Vice President & Head of Customer Solution Support and Innovation, SAP Product Engineering, SAP SE

With every new technology innovation, software functionality, and application enhancement, software developers have the power to shape the future. But to keep serving as transformative change agents, they, too, must evolve with a mindset that readily embraces the right tools and processes to continuously improve the cloud application lifecycle.

One of the most rewarding aspects of my job is watching people of various skills and experiences work together to positively change the world. Our software developers bring a level of brilliance, ingenuity, and empathy when creating and delivering the innovations, pace of change, and outcomes that our customers desire.

There's no limit in sight on what our software development teams can produce. However, that fact doesn't mean they shouldn't evolve. Businesses now operate in an environment that is quickly shifting away from traditional on-premise software and toward more modern cloud-based solutions. And as our customers adopt a cloud mindset from their



Technical Articles

**Marco Krapf**

May 2, 2021 3 minute read

## How to monitor the number of IDoc segments (data records) with SAP Solution Manager 7.2

2 Likes 155 Views 0 Comments

### Introduction

Sometimes you want to know whether an IDoc has a minimum number of segments, a maximum number or a value within a defined range (e.g. to make sure that a reasonable number of time records has been transferred).

As the classic IDoc monitoring object is not suitable for this use case, in this blog post I will describe how to easily achieve this with a **Table Entry Counter**.



Product Information

**Susanne Glaenger**

May 6, 2021 2 minute read

## Calculation of SAP EarlyWatch Alert Coverage based on Workspace

1 Like 57 Views 0 Comments

Follow

RSS feed

Liked



The way we consume reporting has changed radically in the last decade. Piles of paper

[The Cloud Mindset: Engineering the Future of the Application Lifecycle](#)

[How to monitor the number of IDoc segments \(data records\) with SAP Solution Manager 7.2](#)

[Calculation of SAP Early Alert Coverage based on Workspace](#)

# Community News

1.

[Join the ALM Community](#)

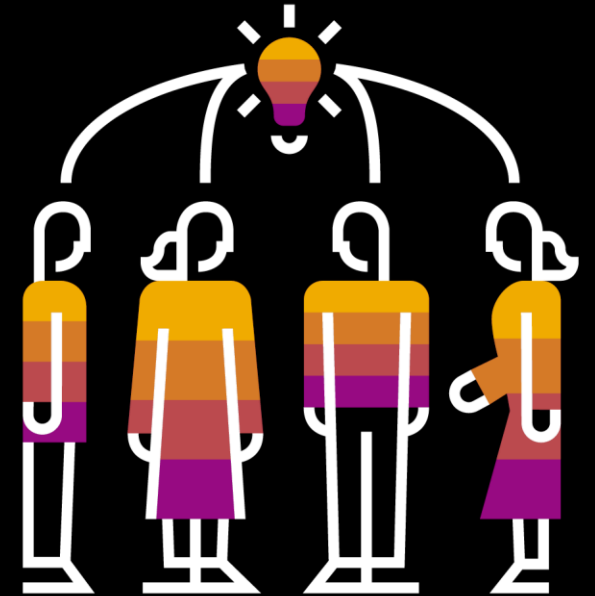
2.

Follow the tags

[SAP Cloud ALM](#), [SAP Solution Manager](#), [SAP Focused Run](#)

3.

Ask your questions to peers and experts!



# ALM News & Updates





# Accelerate Cloud Implementations with SAP Cloud ALM

openSAP – Tue 15<sup>th</sup> June 2021

<https://open.sap.com/courses/calm2>

OPEN FOR  
REGISTRATION

Learn how to Accelerate Cloud Implementations with SAP #CloudALM by registering with the latest #openSAP course

**REGISTER – ENGAGE – ASSIGNMENTS – EXERCISE/PLAY - ACHIEVE**

Product Owners and guest speakers lift the lid and you can explore with them the functionalities of #CloudALM

You will learn about the task-centric implementation approach used in SAP Cloud ALM while also exploring some key features.

**Duration:** 4+1 weeks      **Effort required:** 3-4 hours per week

**Week 1:** SAP Cloud ALM Project Delivery

**Week 2:** Tasks and Business Processes

**Week 3:** Requirements and Testing

**Week 4:** Additional Capabilities and Outlook

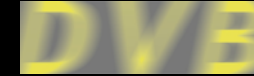
**Week 5:** Exam



**Speakers:** SAP Cloud ALM Product Owners; SAP Guest Speakers

(Demo system available each week to support learning experience)

# Enabling Efficient Test Management with Test Suite and Business Process Change Analyzer Functionality in SAP® Solution Manager



## Before: Challenges and Opportunities

- Streamline and accelerate regression testing processes following support pack and enhancement package upgrades or after major landscape changes such as implementation projects or migrations
- Support efficient planning and management of testing activities, with a structured testing approach
- Comply with internal and external auditing requirements for tests

## Why SAP and Vostura GmbH

- Automated analysis and scoping of testing requirements using business process change analyzer (BPCA) capabilities in SAP® Solution Manager
- Support for the planning and management of tests using test suite capabilities in SAP Solution Manager
- Comprehensive reporting on testing activities
- Deployment support provided by SAP Services and Support and SAP partner Vostura

## After: Value-Driven Results

- Significant reduction in the testing scope as a result of automated analysis of testing needs
- Time freed up for IT and line-of-business staff to spend on more-strategic tasks
- Full traceability of testing procedures, fulfilling auditing requirements
- Ability for the IT team to monitor progress and gain insights into recurring issues
- Establishment of a new testing approach that helps speed up the deployment of new capabilities

“Test suite and business process change analyzer capabilities within SAP Solution Manager **substantially enhanced our testing approaches** by optimizing regression test scopes, improving test status reporting, and helping meet requirements for internal and external audits.”

Konstantinos Jantouris, Vice President OS and IT ■ Finance and Transaction Services (IT), DVB Bank SE

**80%**

Reduction in test scope through automated scoping analysis using BPCA functionality

**60%**

Reduction in the time spent on testing

Featured Partner

**VOSTURA**

**DVB Bank SE**  
Frankfurt am Main, Germany  
[www.dvbbank.com](http://www.dvbbank.com)

**Industry**  
Banking

**Products and Services**  
Financial services  
provider for international  
transport finance

**Employees**  
329

**Featured Solutions and Services**  
SAP Solution Manager and  
SAP Services and Support



# **SAP Enterprise Support Value Maps**

## **Application Lifecycle Management**



# SAP Enterprise Support Value Maps

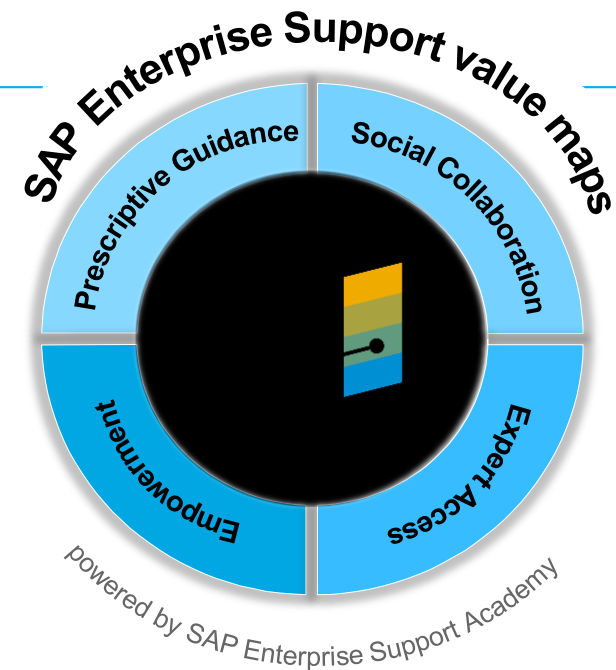
SAP Enterprise Support value maps – an empowerment and support program, which leads you through the knowledge, skills, and services needed to address business challenges and adopt intelligent technologies. Value maps provide direct access to SAP experts, collaboration forums, high-impact learning, and prescriptive guidance, to help you achieve meaningful results and unlock new potential for growth.

## Prescriptive Guidance

Structured content enables guided journey, simplification, and accelerated consumption of needed enablement content across the entire lifecycle.

## Empowerment

Interactive learning formats to empower you with the knowledge and skills for realizing your deployment strategy.








## Social Collaboration

Collaboration forums allow you to get guidance and exchange ideas, and best practices with SAP experts and peers.

## Expert Access

Access to SAP experts and industry peers for professional advice, best practices, business insight, and technology know-how.

## Your Benefits

- |                                                                                                                                                   |                                                                                                                              |                                                                                                                                   |                                                                                                                                         |
|---------------------------------------------------------------------------------------------------------------------------------------------------|------------------------------------------------------------------------------------------------------------------------------|-----------------------------------------------------------------------------------------------------------------------------------|-----------------------------------------------------------------------------------------------------------------------------------------|
|  Advance digital skill level with interactive learning formats |  Maximize the value of your SAP solutions |  Get quick advice form SAP experts and peers |  Access to virtual events with leading specialists |
|  Achieve deployment and Operational goals                      |  Reduce training expenditures             |  Easy access to latest news and releases     |  Record of learning accomplishments                |

## Value Maps

Overview Available Value Maps Customer Quotes Help

# SAP Enterprise Support Value Maps

SAP Enterprise Support Value Maps – an empowerment and support program, which leads you through the knowledge, skills, and services needed to address business challenges and adopt intelligent technologies. Value maps provide direct access to SAP experts, collaboration forums, high-impact learning, and prescriptive guidance, to help you achieve meaningful results and unlock new potential for growth.



### Your Benefits

- ✓ Achieve deployment and operational goals with prescriptive guidance
- ✓ Advance employee skill level with interactive learning formats
- ✓ Maximize the value of your SAP software
- ✓ Reduce training expenditures
- ✓ Access to SAP experts and industry peers for advice and recommendations
- ✓ Stay informed with latest news and releases
- ✓ Attend virtual events with leading specialists
- ✓ Receive a record of learning accomplishments

Contact Us

Request access to SAP Learning Hub, edition for SAP Enterprise Support. If you are already registered you should use 'Access Value Maps' button.

Sign Up

Access SAP Enterprise Support Value Maps Learning Room platform. If you reach the SAP Learning Hub login page, please login and click on [Access Value Maps](#) again.

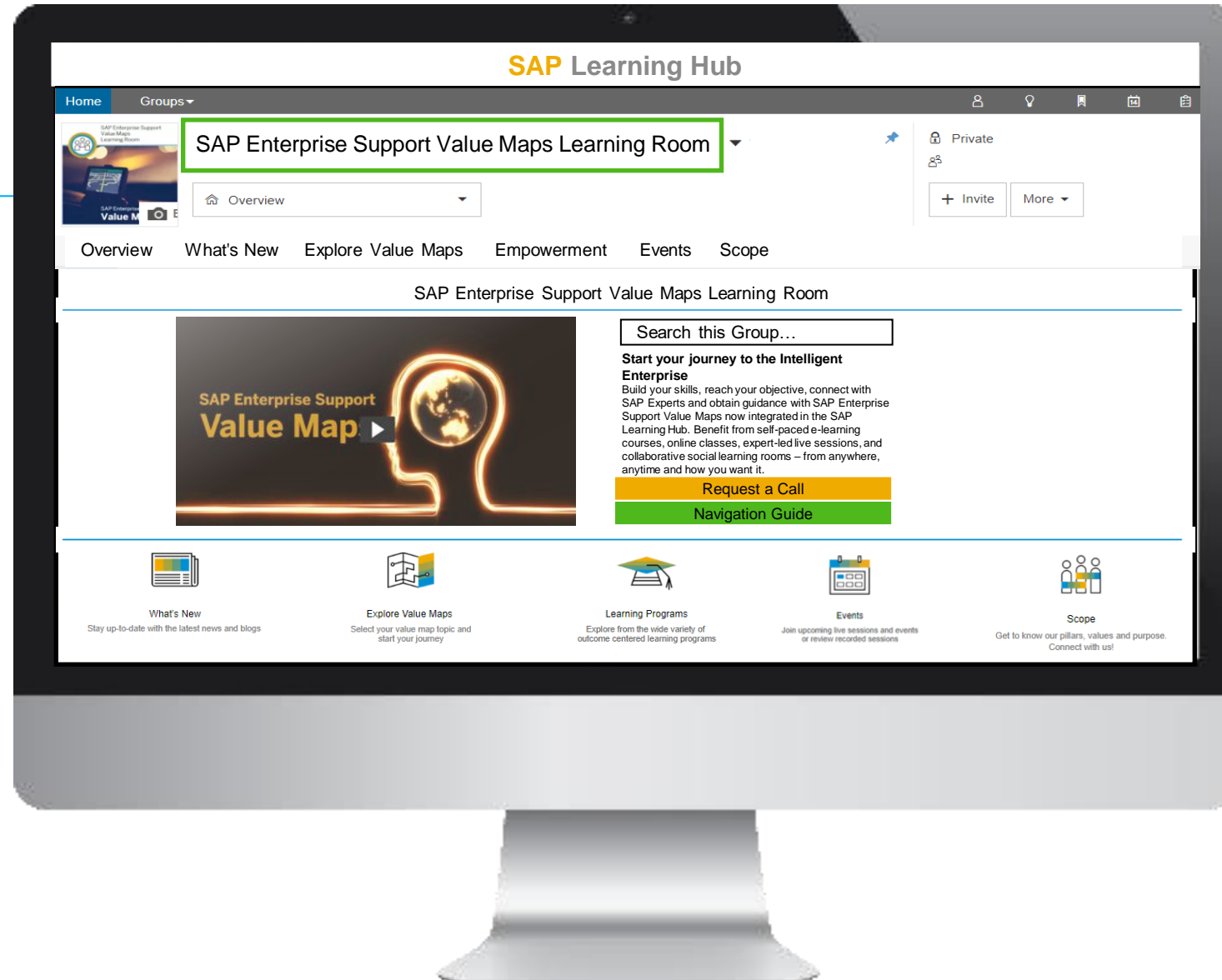
Access Value Maps



# SAP Enterprise Support Value Maps Learning Room



Get started with the main value maps group





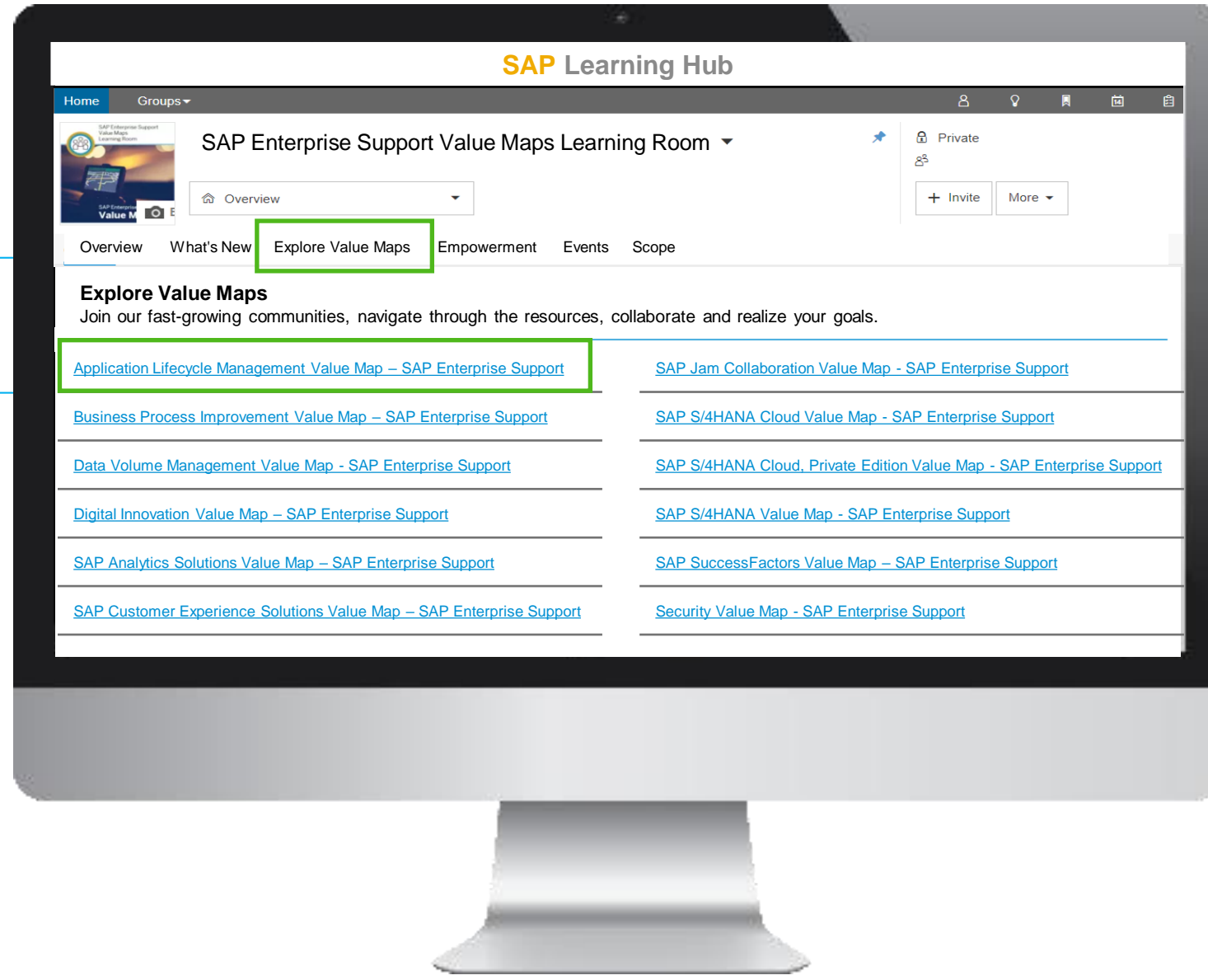
# SAP Enterprise Support Value Maps Learning Room



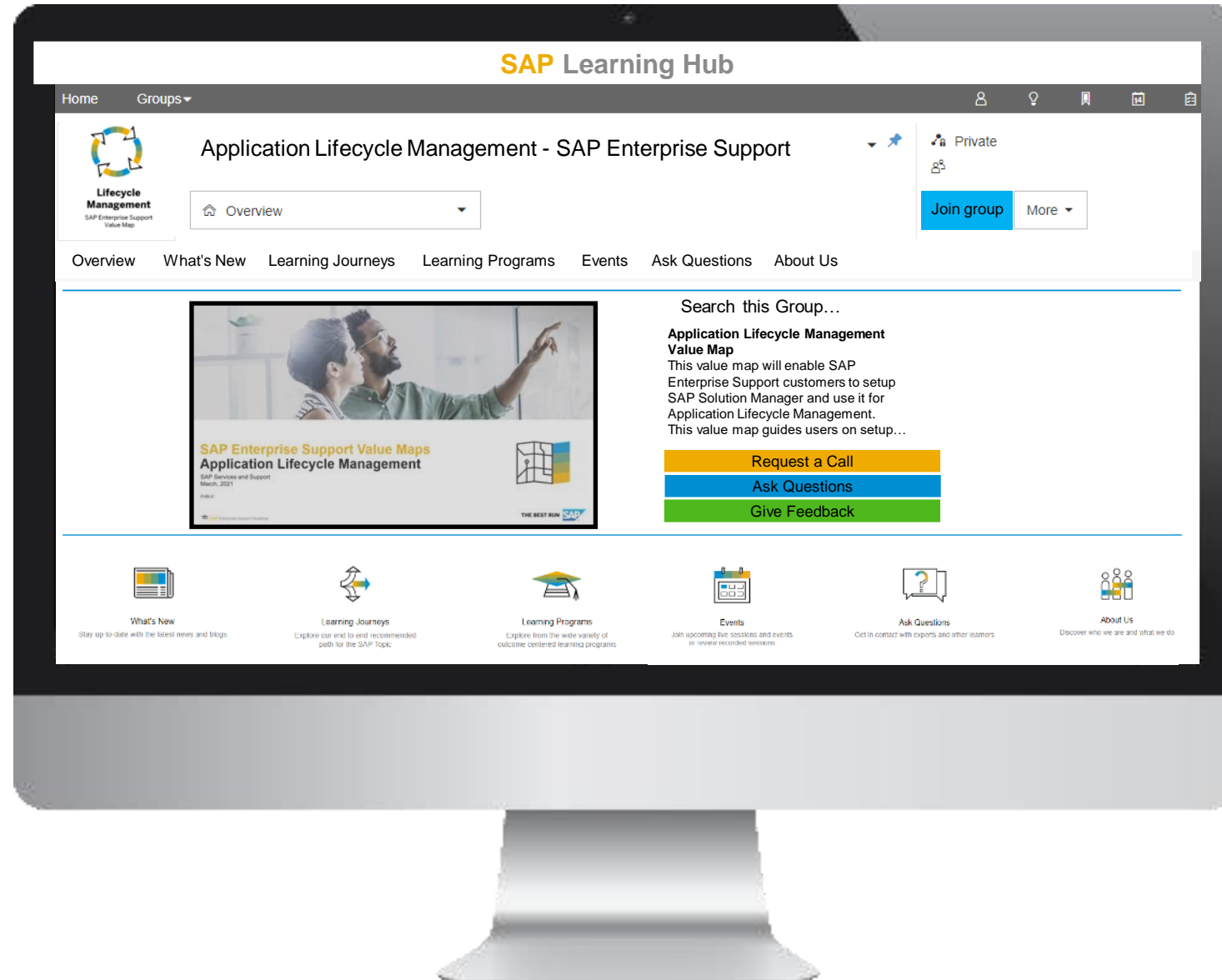
Explore available  
value maps



Select the value map  
of your interest



# SAP Enterprise Support Value Map for Application Lifecycle Management



Join the group to become a member



Request a call to get personalized guidance

**ALM Consulting**  
**Unit HANA ALM, Germany**



# Who we are

## 30 Consultants in Germany

Experts for **Application Lifecycle Management** and **SAP Solution Manager**  
(*coming soon: CALM*)

- Test Management
- Change Management / ITSM
- Process Management / SolDoc / BPMN
- Application Operations
- Development (Test Steps, ChaRM Enhancements)
- Focused Build

# What we do

## Consulting Services

- [support.sap.com/alm-consulting](https://support.sap.com/alm-consulting)

## Global ALM / SAP Solution Manager Community

- [SAP JAM](#)
- Contact: Tobias Meinzer

## Focused Build Experts

- Focused Build Coach Trainer (Adina Suess, Alexander Jaeger)
- Focused Build Stream Lead (Petra Heidler)

## Focused Build

**Focused Build** includes various enhancements for requirements management, project management, test management, change management, release management, and incident management.

- ✓ An integrated, tool-supported methodology to manage requirements and software development in large, **agile projects**
- ✓ Additions for test teams and **test system refresh**
- ✓ **Test Steps** - Manual test case description and execution without MS Word or MS Excel, automatic test case generation, automated test description translation, and much more
- ✓ **Simple IT Request** - the single point of entry for all ITIL processes with an intuitive user interface
- ✓ **Change Request Management** enhancements for complex landscapes (cross landscape distribution, repack, and much more)
- ✓ **Retrofit Automation** and Retrofit for BW
- ✓ **Release Batch Import** to schedule all imports consistently

### Requirements-to-Deploy

With Focused Build, SAP is delivering a seamless tool-based requirements management, project management, test management, and clear-cut collaboration features that allow to orchestrate well as global development teams remotely. This methodology and approach, together with MaxAttention engagements and, since its successful market introduction, a standard implementation method for SAP S/4HANA projects with a high impact.

#### Services

- ✓ Installation and Setup Service
  - ✓ OnePager (EN)
  - ✓ Customer Presentation (EN)
- ✓ QuickStart Service
  - ✓ OnePager (EN)
  - ✓ Customer Presentation (EN)
- ✓ Trainings
- ✓ Focused Build coach

#### Downloads

- ✓ [White Paper](#)



Fix price services

One Pager (with price tag)

Customer presentation

Bestseller

- Test Management Service
- Focused Build Quickstart
- SAP Solution Manager Upgrade Service
- Requirements Management Add-On
- Solution Documentation QuickStart

# Focused Build: One example for our customer support

## Customer:

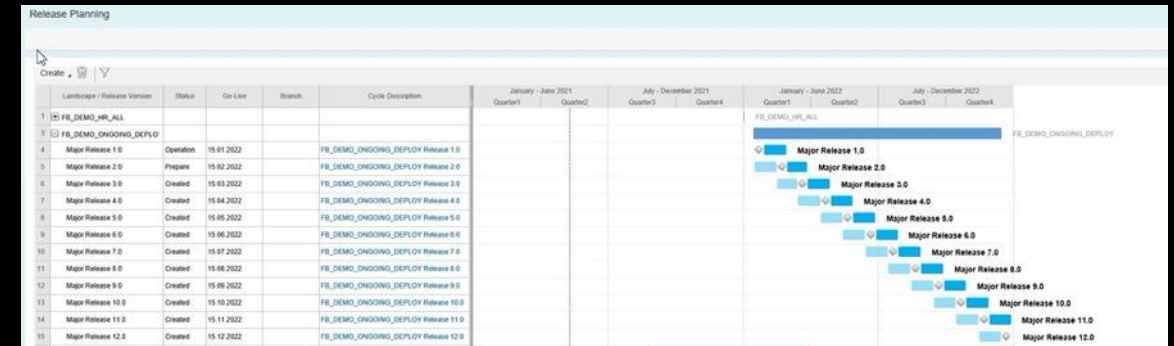
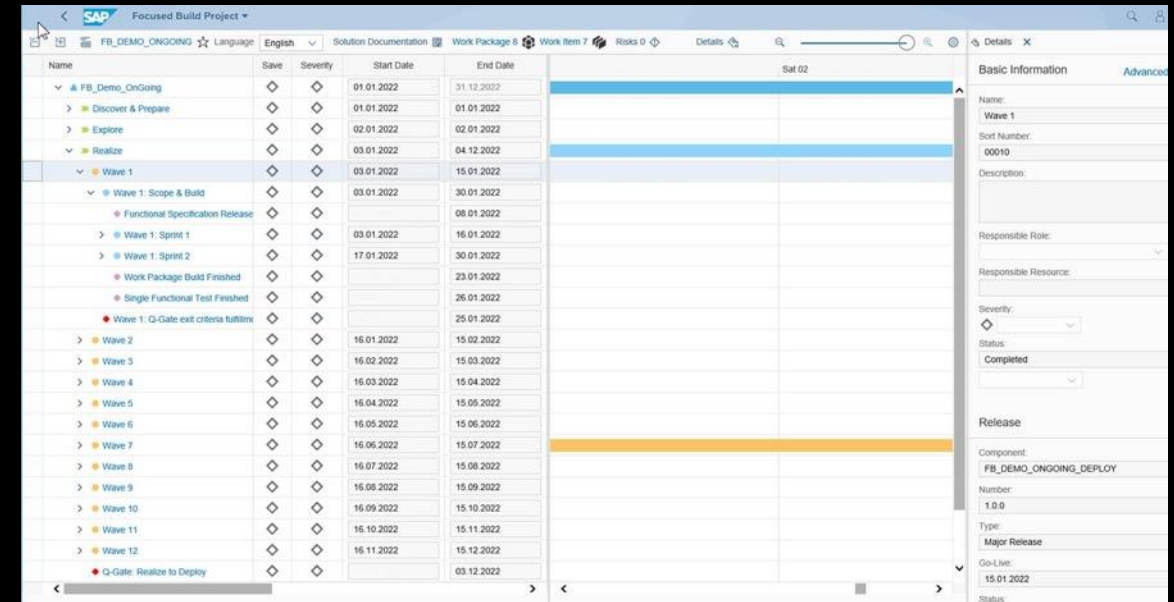
- „Is it possible to use Focused Build for an agile product maintenance? With work packages and work items?“

## Solution (concept):

- Single project with 12 waves, 2 sprints per wave
- Every wave is assigned to a major release
- First project Go-Live: End of may

## More Information

- Visit our KT-Session with Petra Heidler and Stefan Doktor in June
- Exact date and time: [Global ALM / SAP Solution Manager Community JAM Page](#)





# Poll

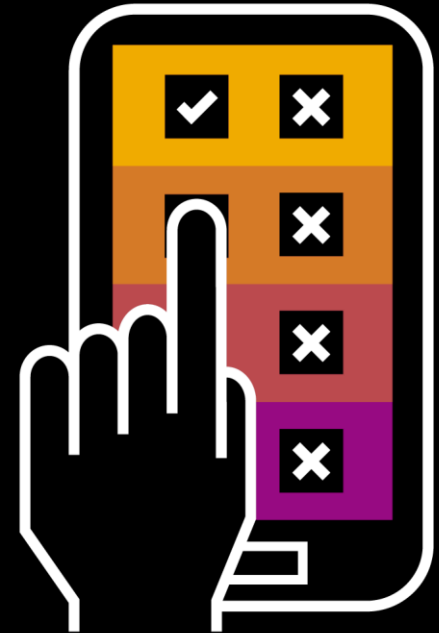




# Let's ask some questions!



Please open <https://www.menti.com>  
and use code **2290 7825**



# Upcoming Events



# Upcoming Events

## What's New Call

- What's New with [SAP Focused Run 3.0 FPS01](#) | June 17<sup>th</sup> 2021, 2:30 PM CEST  
[Register](#)

## ALM Summits

- ALM Summit APJ: July 27 - 31 ([register here](#))
- ALM Summit EMEA: October 19 - 22
- ASUG & ALM Summit NA: December 7 - 9

## ASUGFORWARD

- June 21 - 24 ([learn more here](#))



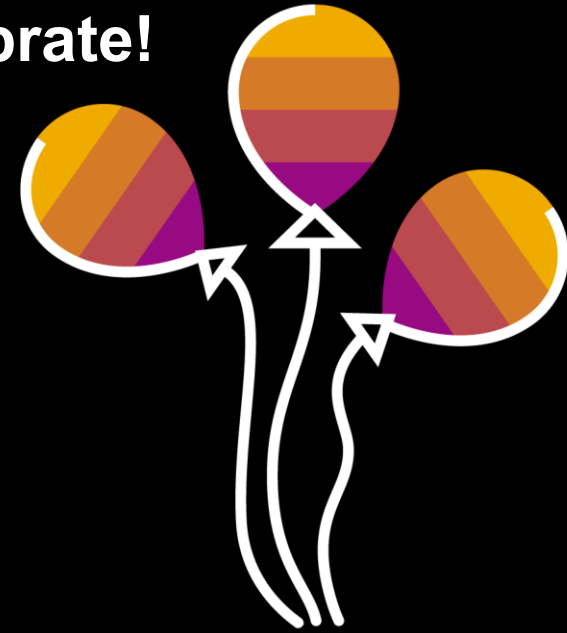
Find all ALM Events here:

<https://support.sap.com/alm-events>

# The ALM Community Call turns one year! Let's celebrate!

The next ALM Community Call will take place on

**June 23, 4pm CEST / 10am EST.**



All registered participants will receive an e-mail invite for this call.



# Q&A



# Questions from the last call

## Flash in SAP Solution Mananger (WEBCUIF)

In SAP Solution Manager Stack there is no possibility to get WEB UIF 748 without changing the CRM Basis.

→ Please check SAP Note 3004670 - Enablement of UI5 Charts in WEBCUIF 747 for support.

# Ask you questions here!

**Please ask your questions!**

Use the Q&A panel in the Zoom webinar to ask your questions.



# Thank you.

Contact information:

Benjamin Schneider, SAP SE

[sap\\_cxs\\_social\\_media@sap.com](mailto:sap_cxs_social_media@sap.com)