



# ALM Community Call

## March 24, 2021

CXS Customer Communications and Relations, SAP SE

PUBLIC

# Disclaimer

The information in this presentation is confidential and proprietary to SAP and may not be disclosed without the permission of SAP. Except for your obligation to protect confidential information, this presentation is not subject to your license agreement or any other service or subscription agreement with SAP. SAP has no obligation to pursue any course of business outlined in this presentation or any related document, or to develop or release any functionality mentioned therein.

This presentation, or any related document and SAP's strategy and possible future developments, products and or platforms directions and functionality are all subject to change and may be changed by SAP at any time for any reason without notice. The information in this presentation is not a commitment, promise or legal obligation to deliver any material, code or functionality. This presentation is provided without a warranty of any kind, either express or implied, including but not limited to, the implied warranties of merchantability, fitness for a particular purpose, or non-infringement. This presentation is for informational purposes and may not be incorporated into a contract. SAP assumes no responsibility for errors or omissions in this presentation, except if such damages were caused by SAP's intentional or gross negligence.

All forward-looking statements are subject to various risks and uncertainties that could cause actual results to differ materially from expectations. Readers are cautioned not to place undue reliance on these forward-looking statements, which speak only as of their dates, and they should not be relied upon in making purchasing decisions.



# Welcome and Introduction



# What is the ALM Community Call?

- A monthly call for the whole ALM community
- One focus topic, but news from all ALM areas
- Lots of room for product demos and Q&A with additional experts in the “back” to answer your questions





A close-up photograph of a lit sparkler against a dark night sky. The sparkler is the central focus, with a bright, intense yellow-white core from which numerous thin, golden-orange sparks radiate outwards in all directions. Some sparks are long and straight, while others are shorter and more clustered. In the lower right corner, another sparkler is partially visible, also lit. The background is dark blue and black, with some out-of-focus light sources visible as soft, glowing circles.

# **Let's Celebrate!**

This call marks the 10. edition  
of the ALM Community Call!

Thanks for joining us, for  
coming back every month, for  
asking great questions, and  
for your feedback!

# ALM Community Call: Agenda for March 24, 2021

## Focus topic: SAP Focused Run

Welcome and Introduction

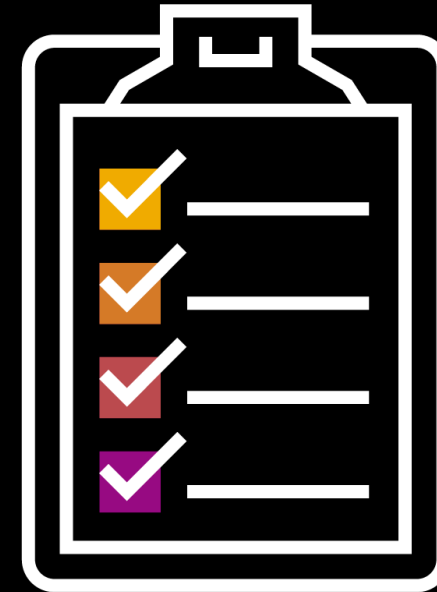
ALM Community News

ALM News and Updates

- SAP Cloud ALM
- SAP Solution Manager
- SAP Focused Run

Poll

Upcoming Events and Webinars



Please use the Q&A tool in Zoom to ask your questions also during the presentation!

# Speakers & Background Experts



Hendrik Müller



Tonja Kehr



Ben Schneider



Tim Steuer



Stefan Lahr



Cay Rademann



Evan Stoddard

# The Application Lifecycle Management Product Portfolio of SAP





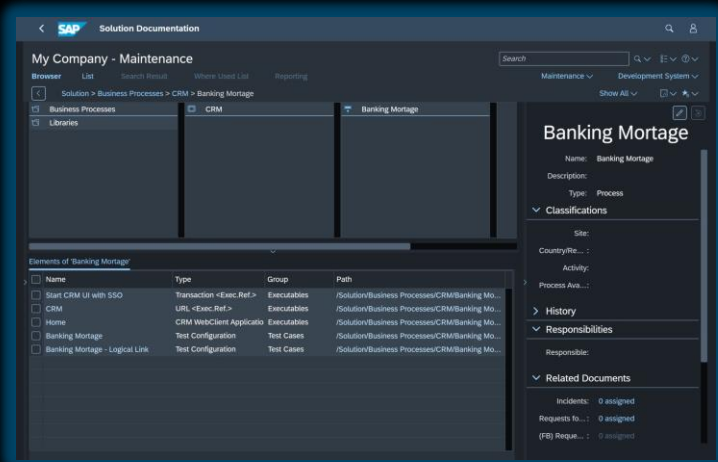
# The Application Lifecycle Management Product Portfolio of SAP



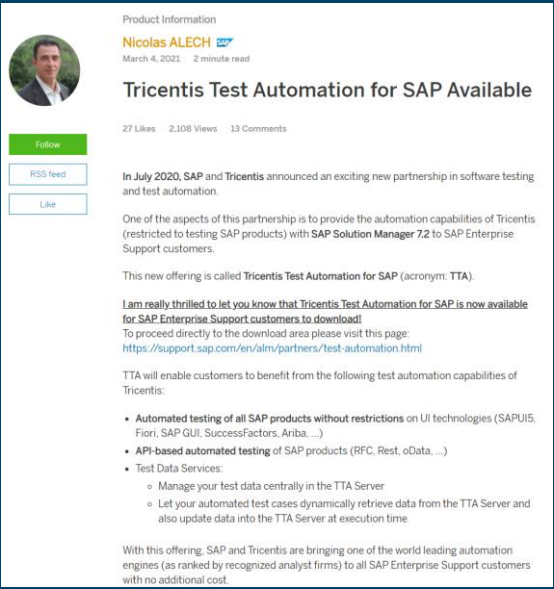
# ALM Community News



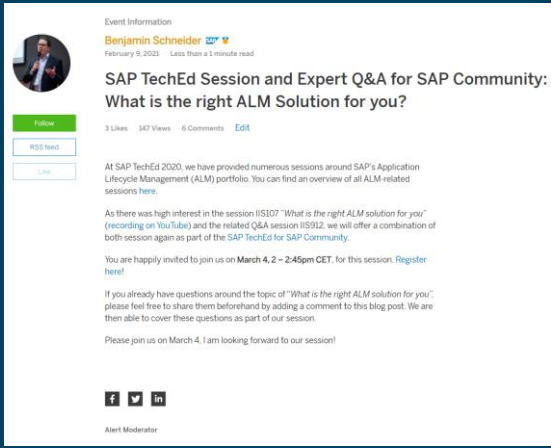
# ALM Community News



Quartz Dark Mode



Tricentis Test Automation for SAP



SAP TechEd for the SAP Community



# Community News

1.

[Join the ALM Community](#)

2.

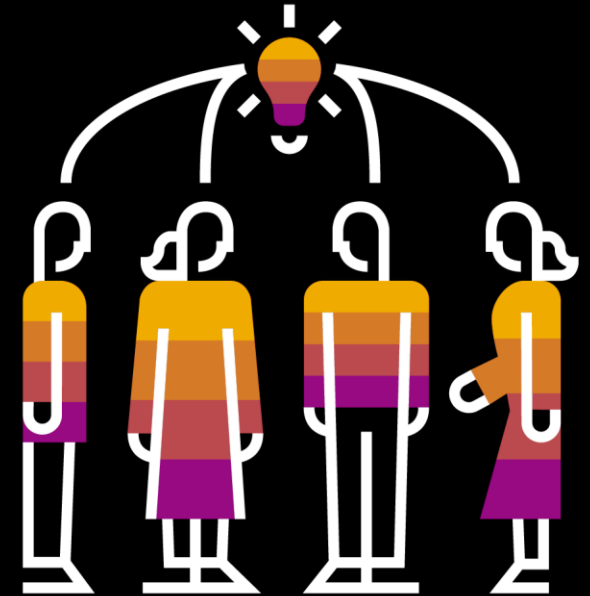
Follow [Tim's To-Do list](#) to find out what's going on in ALM!

3.

Follow the tags [SAP Cloud ALM](#), [SAP Solution Manager](#), [SAP Focused Run](#)

4.

Ask your questions to peers and experts!



# ALM News & Updates





# SAP Cloud ALM





# Video: SAP Cloud ALM In A Minute



[SAP Cloud ALM In A Minute](#)

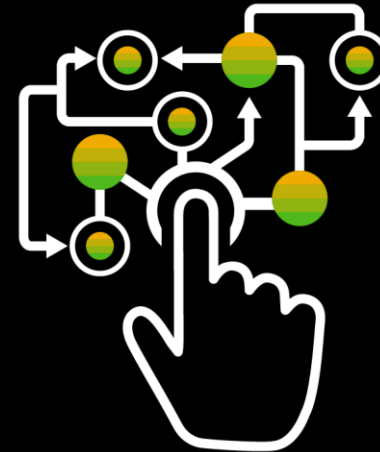
# SAP Cloud ALM for SAP S/4HANA private cloud and SAP Business Suite Implementation

Q1/2021

SAP Activate Roadmap

Task Management

Manual Testing



# SAP Cloud ALM for SAP S/4HANA private cloud and SAP Business Suite Operations

Q1/2021

Integration  
Monitoring



Integration Monitoring for  
**WebServices, AIF, and IDOC**

Business Process  
Monitoring



KPIs for **Lead to Cash, Source  
to Pay, Design to Operate**

Real User  
Monitoring



Tracking of **performance  
and utilization**

Q2/2021

Job Monitoring



**Job & Automation  
Monitoring**

Health Monitoring



**Monitoring system health**



# SAP Solution Manager



# Tricentis Test Automation for SAP Solution Manager Benefits

You get more ...	... Top of the notch Test Automation Engine...	... and lose nothing.
<p>SAP Enterprise Support Customers* get Tricentis Test Automation capabilities for:</p> <ul style="list-style-type: none"><li>■ All <b>SAP Products and UIs</b> without restrictions</li><li>■ <b>API tests</b> for SAP products</li><li>■ Upcoming <b>innovations</b></li></ul>	<p>Tricentis is the test automation company rated as leader by <b>analysts</b>:</p> <ul style="list-style-type: none"><li>■ <b>Modular</b> Approach</li><li>■ High <b>reusability</b></li></ul>	<p>Investments in SAP Solution Manager are fully protected:</p> <ul style="list-style-type: none"><li>■ No functionality is discontinued.</li><li>■ Non-disruptive portfolio offering</li></ul>

# Tricentis Test Automation for SAP Integrated with SAP Solution Manager

## The foundation to test SAP Solutions



SAP Solution Manager Test Suite

Integrated with



Tricentis Test Automation for SAP (TTA)

- Test Planning
  - Test Preparation
  - Test Orchestration & Test Reporting
  - Manual Testing
  - Defect Management
  - Exploratory Testing
  - Integration to test automation
- 
- Automated Test Case Authoring
  - Support for all UIs and APIs in SAP products
  - Test Data Services

### TTA Product and Technology Coverage for Automation

SAP UI5/Fiori

Success Factors

SAP GUI

Ariba

**All Other SAP  
Products**

SAP CRM UI

Concur

API Based  
Automated  
Testing for all  
SAP Products

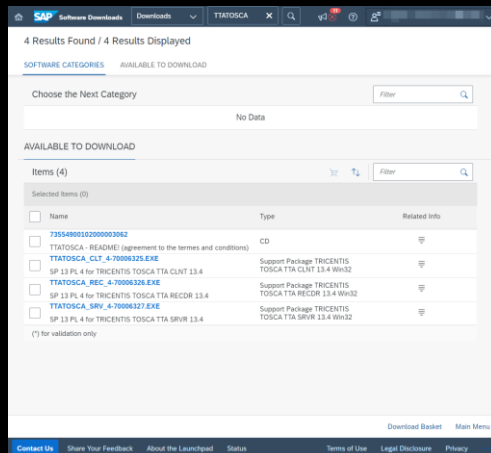
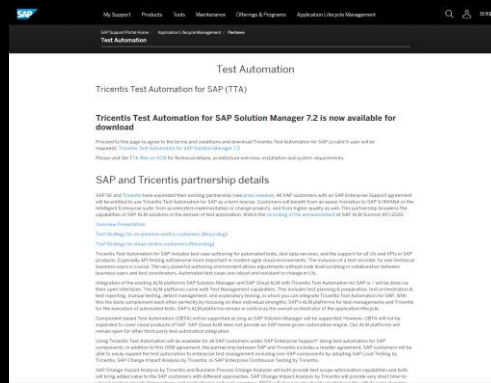
WebDynpro

C4C

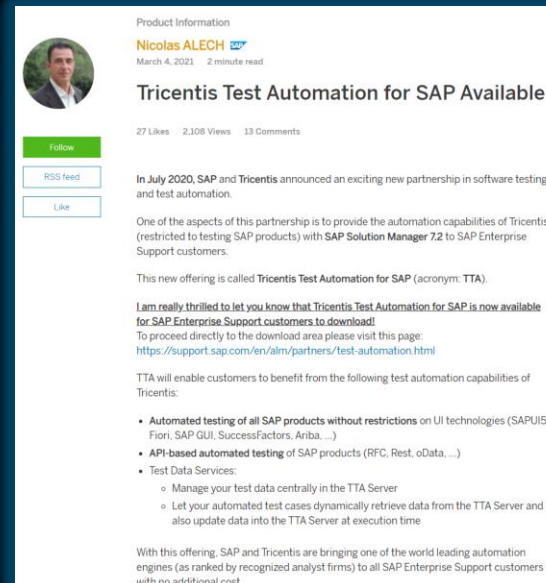


# Tricentis Test Automation for SAP: General Information

## Download



## Blog



## Tricentis Test Automation for SAP

Please post your questions below the blog!

## Webinars

2 upcoming webinars on Tricentis Test Automation for SAP:

- April 14, 8:30am CET
- April 15, 5pm CET

Speaker: Nicolas Alech



# SAP Focused Run

for secure and compliant hybrid operations



# SAP Focused Run: General / Security View

Ensure healthiness of hybrid SAP landscape by monitoring and alerting – Increase operation efficiency by automating operational tasks – Enable root-cause analysis on deep technical level

## General View

- Licensed **On Premise Solution** for **centralized** and highly automated **IT Operation**
- Feature rich and powerful set of **application operations use cases**
- Leverages **SAP HANA** platform
- Customers with **advanced needs**, which go **beyond SAP Solution Manager**



## Security View

- **Configuration Monitoring use case** as part of SAP Focused Run
- Runs **validation content** provided **by SAP Services** or created **by Customer**
- Customers, who request **easy, flexible, and powerful features** for configuration and security analytics

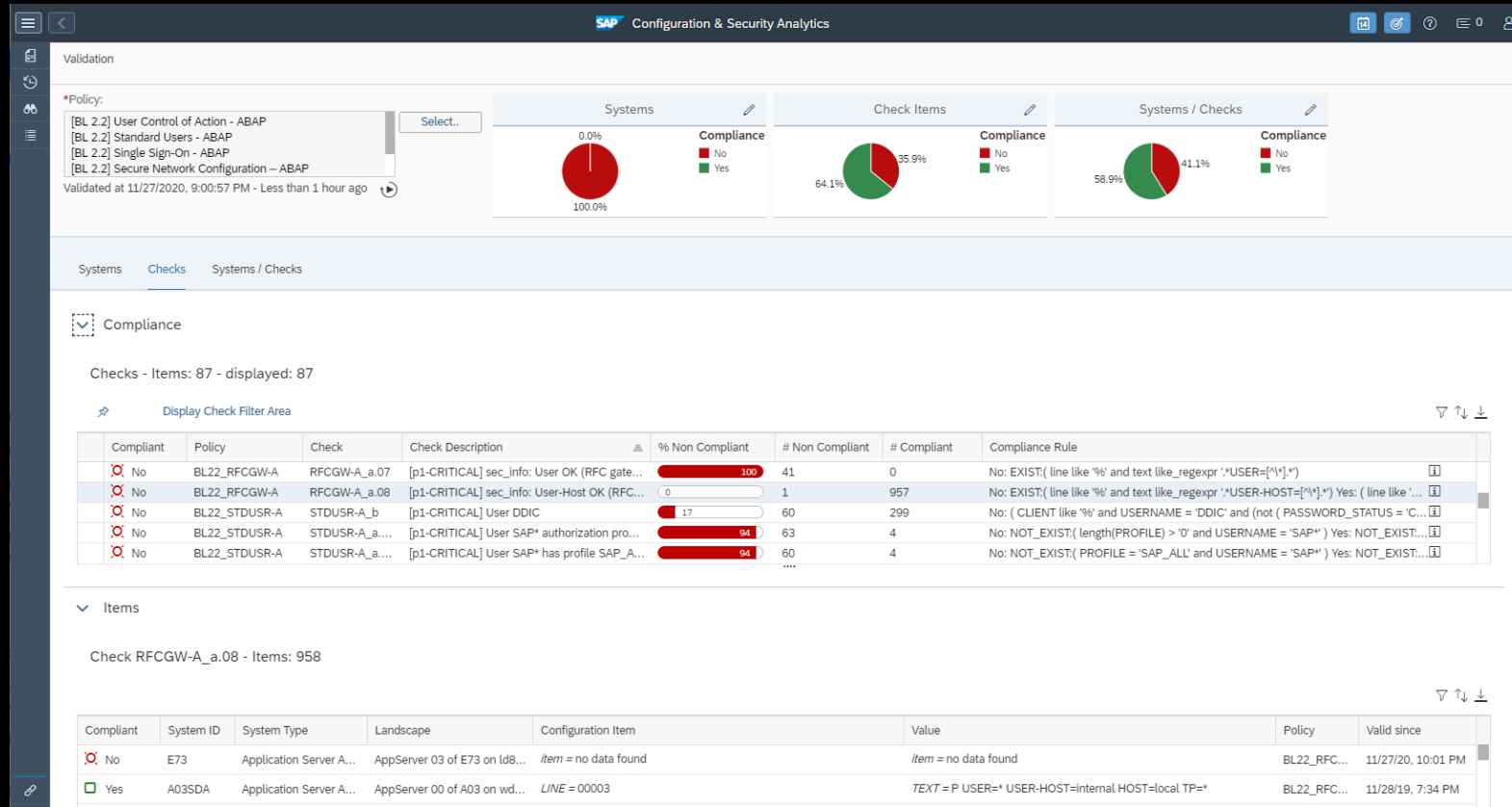
# SAP Focused Run

*for Secure Configuration — ensure Audit Compliance & keep the “doors” and “windows” closed*





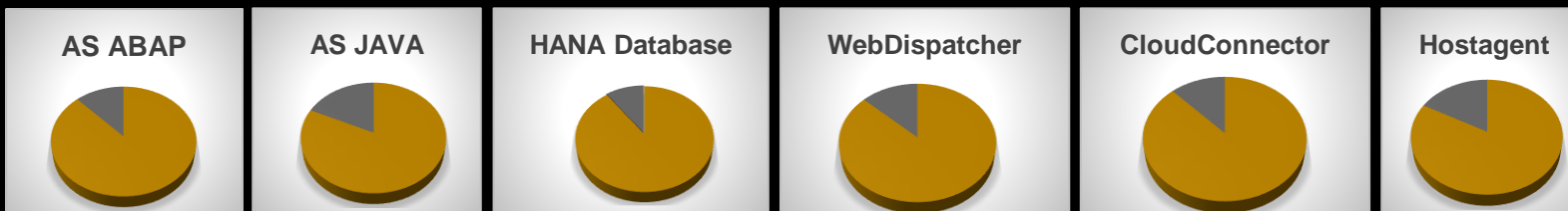
# Get Clean – Establish Baseline Security



**SAP knows SAP best – start your path to baseline security with SAP Security Baseline Template**

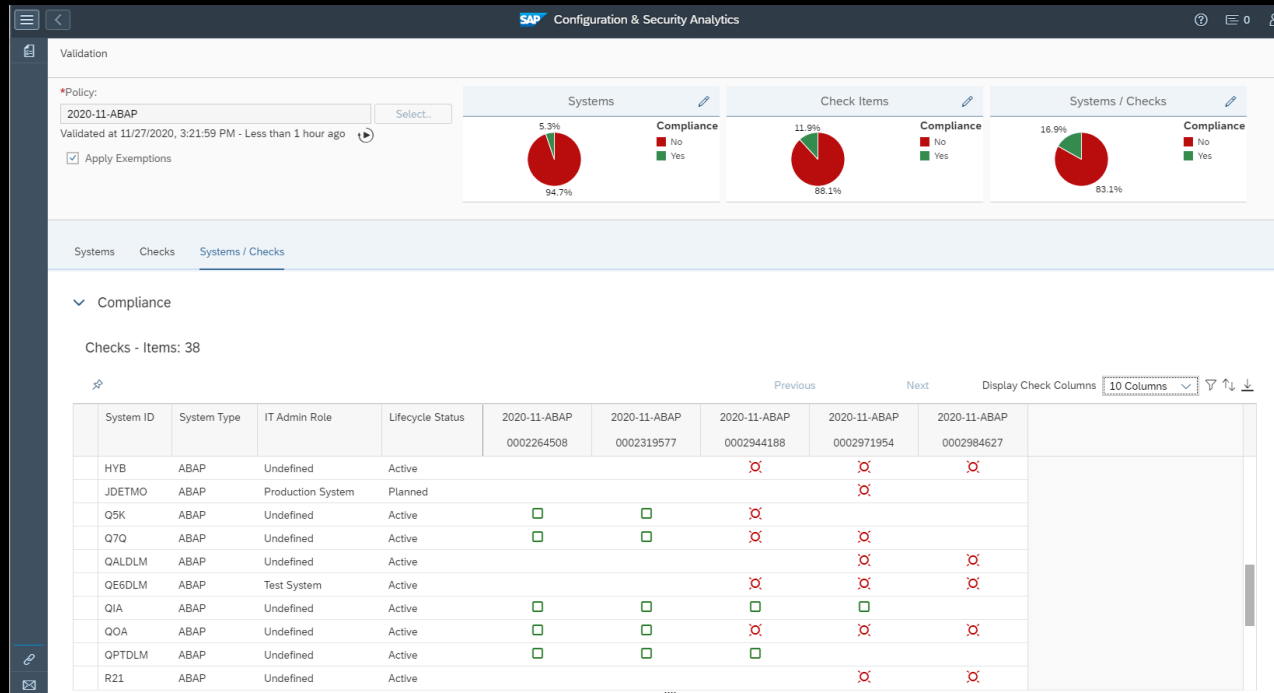
## Focused Run – Benefits:

- ✓ Comprehensive security baseline – relevant for common audit standards
- ✓ 200+ checks, 3 priorities (on Github)
- ✓ Latest S/4HANA security features reflected
- ✓ Includes practical adjustments to rules for old releases with compatibility issues
- ✓ Extensive security data supports many advanced security measures
- ✓ Intelligent validation rules – fully transparent, easily customizable
- ✓ Granular policy definition and multiple policy selection for aggregated results
- ✓ Typical Coverage: 80 - 90 % of customer's security policy (see example)





# Stay Clean – Validating Security Notes Deployment



Compliance

Checks - Items: 5 - displayed: 5

Display Check Filter Area

Compliant	Policy	Check	Check Description	% Non Compliant	# Non Compliant	# Compliant	Compliance Rule
✗ No	2020-11-ABAP	0002984627	[p2-CVSS 8.6] Note 0002984627 missing an...	100	38	0	No: (( ( COMPONENT = 'SAP_UI' and VERSION = '750' and...
✗ No	2020-11-ABAP	0002944188	[p3-CVSS 4.3] Note 0002944188 missing an...	67	20	3	No: (( ( COMPONENT = 'S4CORE' and VERSION = '100' an...
✗ No	2020-11-ABAP	0002264508	[p3-CVSS 5.4] Note 0002264508 missing an...	50	6	6	No: (( ( COMPONENT = 'FI-CA' and VERSION = '600' and lp...
✗ No	2020-11-ABAP	0002319577	[p3-CVSS 5.4] Note 0002319577 missing an...	50	6	6	No: (( ( COMPONENT = 'FI-CA' and VERSION = '600' and lp...
✗ No	2020-11-ABAP	0002971954	[p3-CVSS 6.5] Note 0002971954 missing an...	98	49	1	No: (( ( COMPONENT = 'SAP_BW' and VERSION = '731' an...

**A substantial number of successful attacks starts from vulnerable software**

## Focused Run – Immediate Benefits:

- ✓ Transparency about exposure due to new SAP Security Notes
- ✓ Shortly after SAP Patchday
- ✓ 43 % SNote coverage on average (AS ABAP + Kernel, HANA DB) → 68 % with additional subscription-based service content \*\*\*
- ✓ Software patches and common manual activities
- ✓ Track actual deployment.
- ✓ Use exemptions to toggle between management and operational reporting

## Latest Statistics \*\*\*:

	'20	Jan	Feb	Mar	Apr	May	Jun	Jul	Aug	Sep	Oct	Nov	Dez	Avg
[%]	83	73	33	57	66	70	73	71	76	72	68	80		68

\*\*\* Including content for AS ABAP, AS JAVA, SAP Kernel, SAP HANA and ASE Database, BO BI Platform, SAP Cloud Connector, SAP HostAgent

\*\*\* 2021: 65 % (Jan), 80 % (Feb), 78 % (Mar)

## Guided Procedures

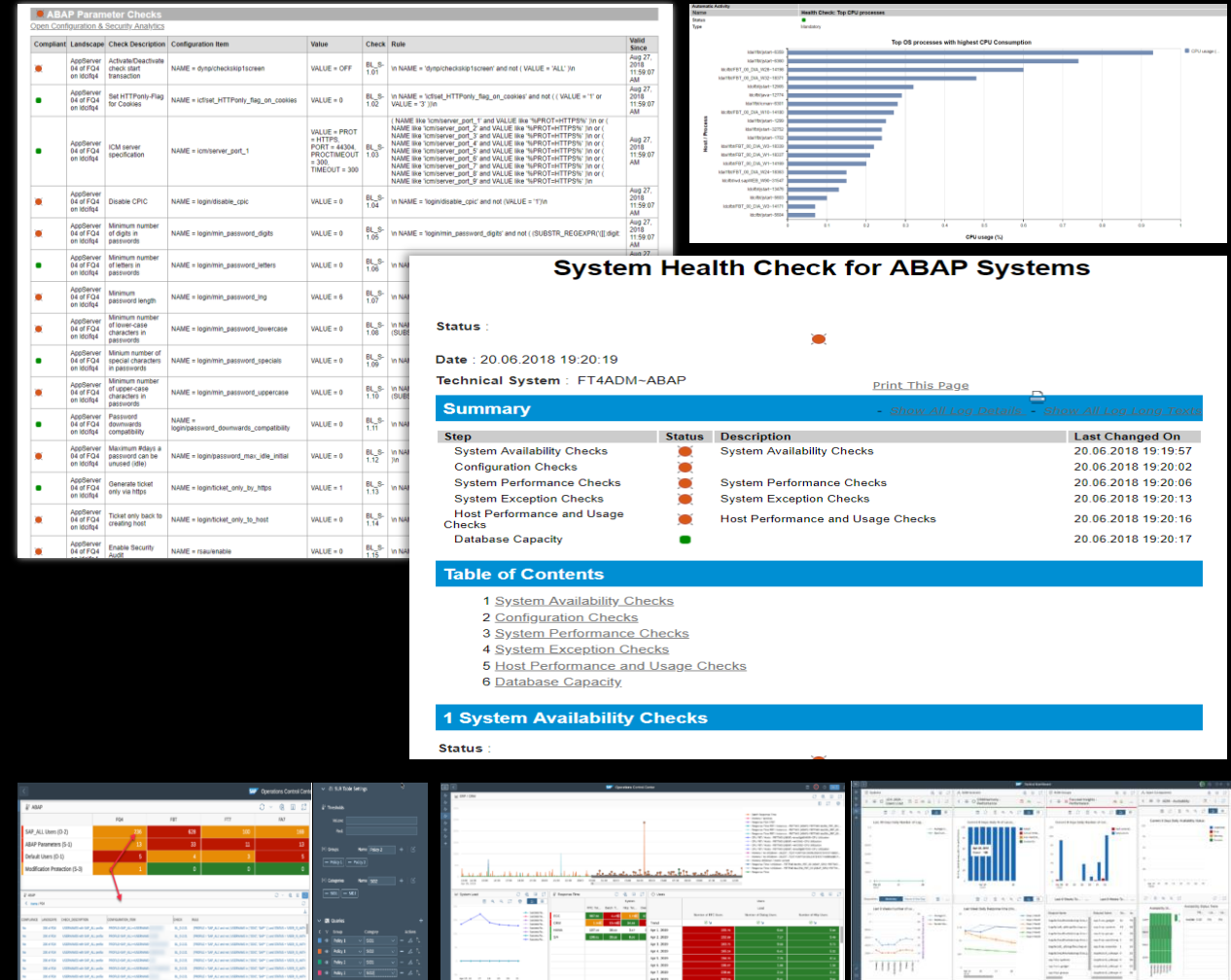
**Schedule** (daily, monthly, ad hoc) the **automatic execution of System Health Checks** based on the SAP Guided Procedure Framework.

The registered recipients will get an **email** which includes the **System Health Check document** in HTML format.

Some examples for included checks:

- **Availability** (System, Instance)
- **ABAP Performance** (Dialog Response time, HTTP Response Time, Long Running Jobs, ...)
- **ABAP Exceptions** (Lock Entries, Short Dumps, ...)
- **OS Level Checks** (Top CPU Processes, File System Free space)
- **HANA Checks** (HANA Space, HANA Used Memory, Database Growth)
- **ASE Checks** (Space, Long Running Transactions, ...)
- **Results from Configuration & Security Analysis**

# OCC Dashboards



# Stay Clean / Keep Running – Alert and Ticket integration

## Purpose: Keep Systems running

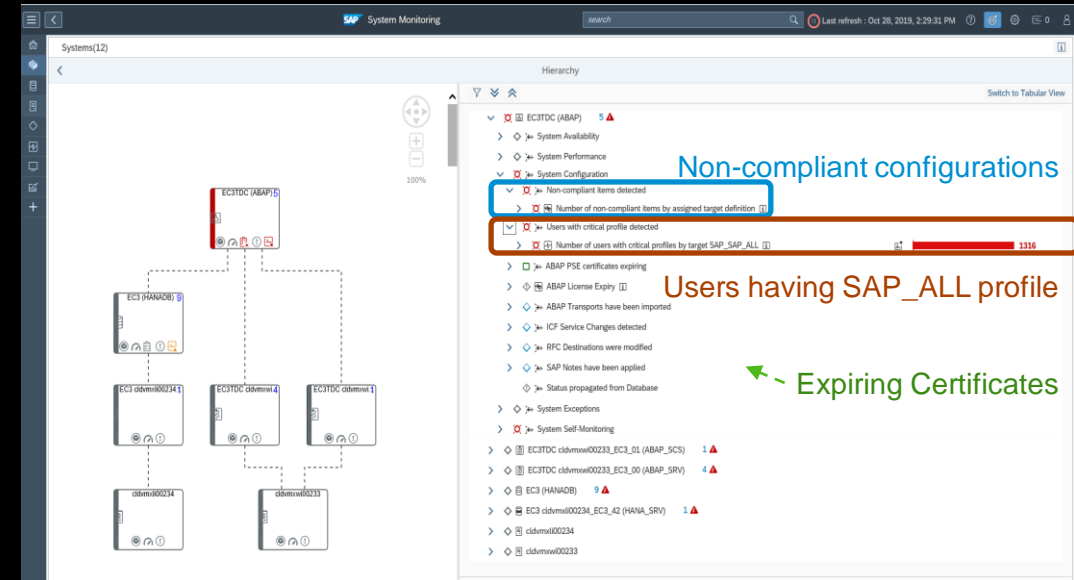
- Processing of **critical operational issues** in a standard alert process, e.g. expiration of certificates, users with SAP\_ALL profile, security configurations with performance impact.
- Standard or Custom metrics and alerts based on CCDB data or CSA validation policy – included in **System Monitoring** Templates
- Plug-in** for integrating custom policies into standard monitoring

## Purpose: Stay clean – avoid degrading compliance status

- Processing of **popping-up non-compliances** in a standard process (independent from System Monitoring)
- Configure compliance related **alerts directly from CSA**, while re-using standard Alert and Event Management
- Configurable aggregation** (System, Config Store, Check or Item)

## Purpose: Trigger continual update

- Trigger deployment of latest SAP recommendations



The screenshot shows the SAP Configuration Validation Alert Management interface. It displays a table of alert definitions for policies. The table has columns for Alert ID, Alert Description, Policy, Aggregation, Type of Scope, S..., Frequency, and Set A... The table lists 13 items, with 12 displayed.

Alert ID	Alert Description	Policy	Aggregation	Type of Scope	S...	Frequency	Set A...
ALERT_ABAP_SECPARAM	Alert on Abap security Parameter	HECQC_ABAP_SEC	Check	System Scope	[1]	Daily	X
ALERT_SAP_ALL_USER	Alert on SAP_ALL users on System	SAP_SAP_ALL	System	All	[1]	Daily	X
ALERT_HANA_PARAMETER	Alert on HANA GC policy	HECQC_HANA_PARAMETER	Store	System Scope	[1]	Daily	X
DEMO_ABAP_CLIENT_066	Description CLIENT 066	ABAP_CLIENT_066	Item	All	[1]	Hourly	X
FAILED_ABAP_TRANSPORTS	Alert for failed ABAP Transports (F...	SAP_FAILED_TRANSPORT	Item	System Scope	[1]	Hourly	X

The screenshot shows the SAP Alerts (2829) interface. It displays a table of alerts, with columns for Alert Category and Name, and Managed Object Type. The table lists several alerts, including ALERT\_ABAP\_SECPARAM - Policy: HECQC\_ABAP\_SEC - Check: 2.90.01b, 2.90.01c, and 2.90.01d.

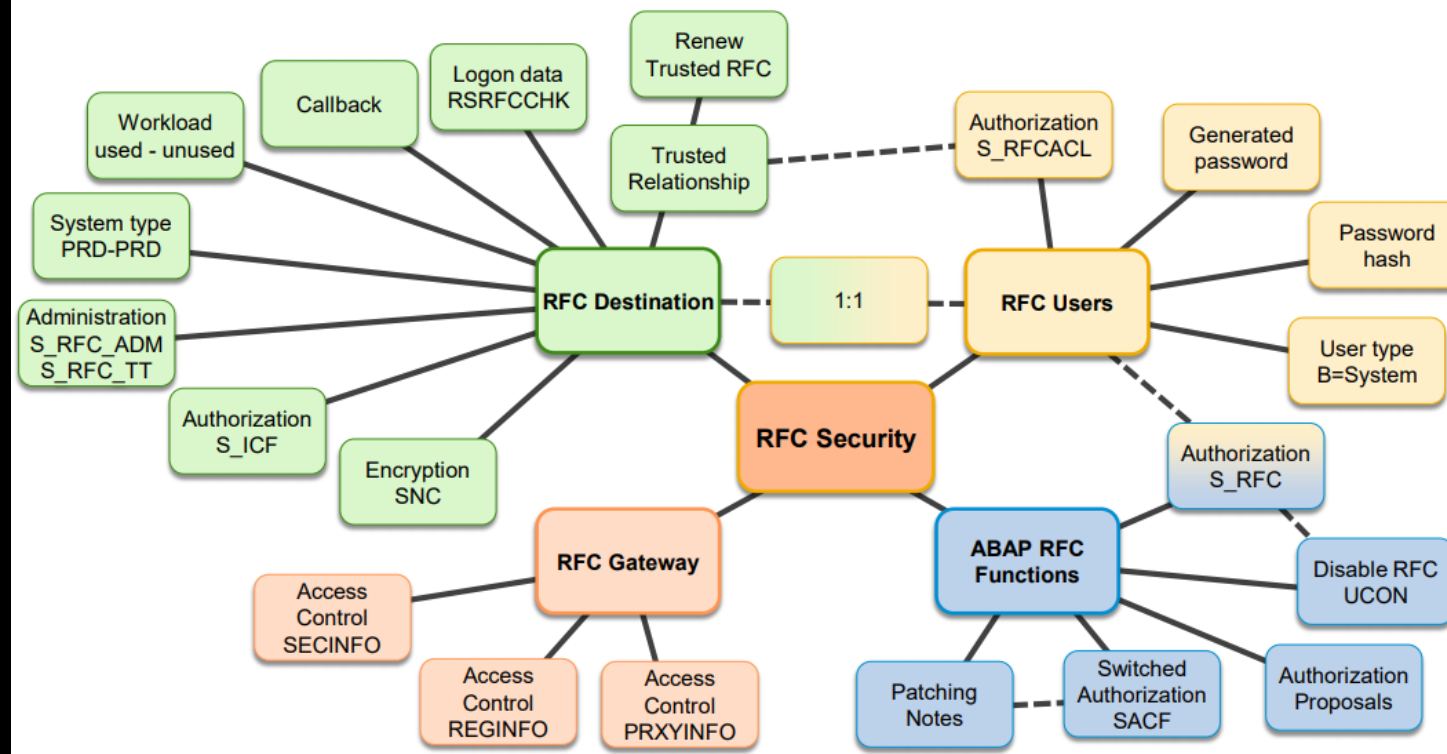
Alert Category and Name	Managed Object Type
ALERT_ABAP_SECPARAM - Policy: HECQC_ABAP_SEC - Check: 2.90.01b	WEFDLM
ALERT_ABAP_SECPARAM - Policy: HECQC_ABAP_SEC - Check: 2.90.01c	E73
ALERT_ABAP_SECPARAM - Policy: HECQC_ABAP_SEC - Check: 2.90.01c	SQH
ALERT_ABAP_SECPARAM - Policy: HECQC_ABAP_SEC - Check: 2.90.01c	HHATMO
ALERT_ABAP_SECPARAM - Policy: HECQC_ABAP_SEC - Check: 2.90.01d	Q5K

# Stay ahead – Track Progress

## Example: RFC Security

*Gather insight that fits exactly to your project needs!*

### RFC integration security aspects covered by SAP Focused Run



#### Focused Run – Immediate Benefits:

- ✓ Comprehensive data – based on Best Practice from SAP Security Services
- ✓ Validate exactly what is relevant and feasible for your project – by creating custom-tailored policies
- ✓ Get additional insight from *Search* across systems and from browsing through data
- ✓ Focus on what may require action: Maintain exemptions for
  - ✓ approved non-comliancies
  - ✓ accepted grace periods
- ✓ Define alerts or distribute reports for triggering changes through standardized processes.
- ✓ Create project-specific dashboard pages.



## Stay ahead – Build your own validation policies

- ✓ Report on what you actually are able and committed to handle

## Parameter Value (ABAP)

```
<checkitem desc="[p3-EXTENDED] Accept insecure RFC-connections  
to SNC-enabled Server" id="NETENC-A_c.02">  
  <compliant> NAME = 'snc/accept_insecure_rfc'  
    and (VALUE = '0' or VALUE = 'U')  
  </compliant>  
  <complianttext/>  
  <noncompliant> NAME = 'snc/accept_insecure_rfc'  
    and not (VALUE = '0' or VALUE = 'U')  
  </noncompliant>  
  <noncomplianttext/>  
</checkitem>
```

ACL content: Line in Message Server sec\_info (ABAP)

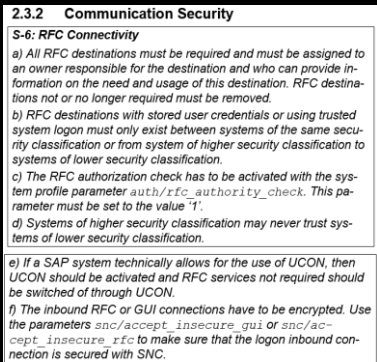
```
<configstore name="MS_SECINFO" name_extended="" sci_id="" system_type="ABAP">
  <checkitem desc="[CRITICAL] Message server acl_info content" id="MSGSRV-A_e">
    <compliant> line like '%' and text like_regexpr 'HOST=[^*]' </compliant>
    <noncompliant> line like '%' and text = 'HOST=*' </noncompliant>
  </checkitem>
</configstore>
```

## Deactivate critical WebService (ABAP)

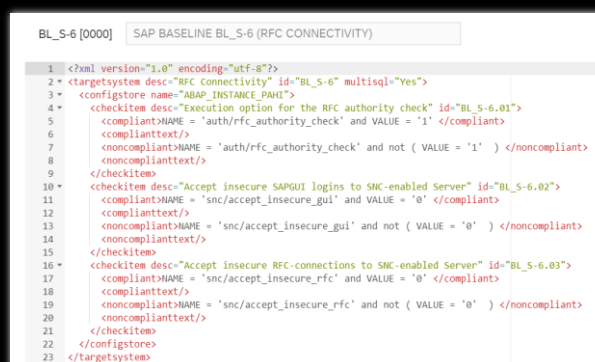
```
<checkitem desc="[p2-STANDARD] Deactivate WebService icf" id="NETCF-A_d.06" operator="not_exist:URL">
  <compliant> ICF_NAME like '%' and URL = '/sap/bc/bsp/sap/icf/' </compliant>
  <complianttext/>
  <noncompliant> ICF_NAME like '%' and URL = '/sap/bc/bsp/sap/icf/' </noncompliant>
  <noncomplianttext/>
</checkitem>
```

## Policy and Check Examples

## 1 Security Policy Document



2 Policy Definition is an XML file



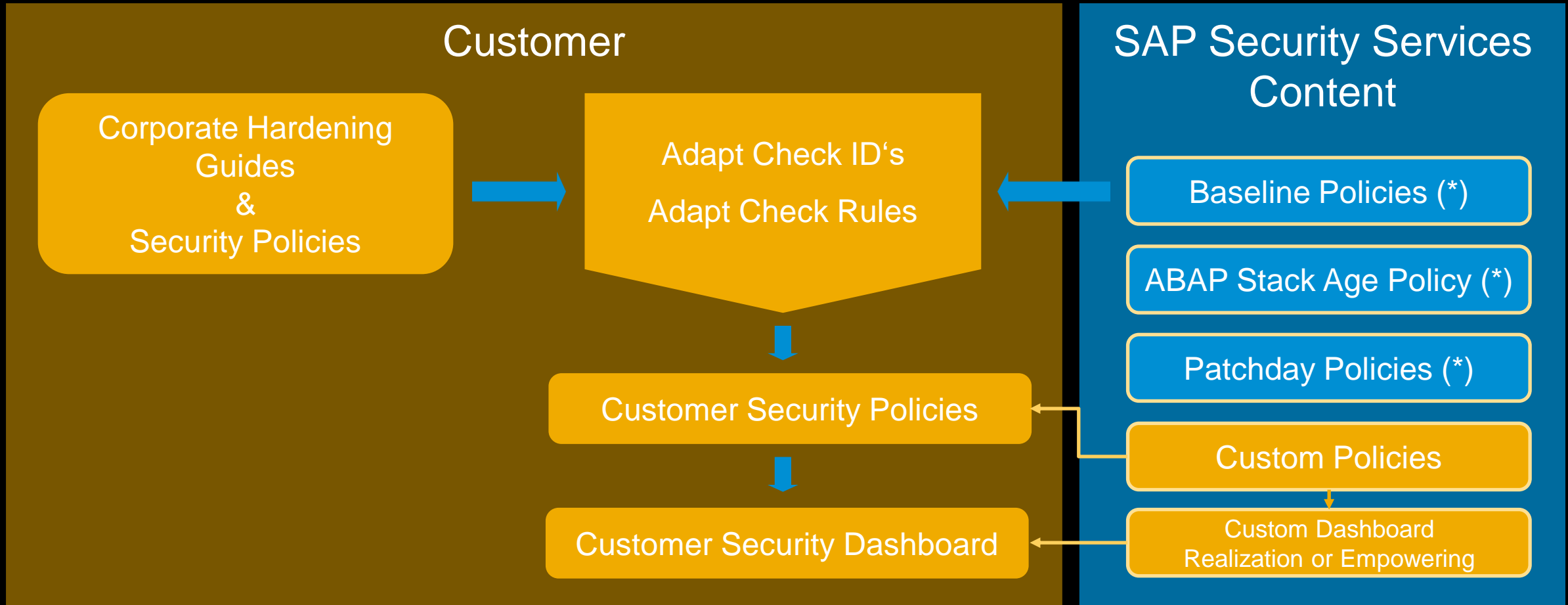
3

## Validation Result

Compliance of systems									
Policy Definition BASELINE SAP POLICY 5-6 (ABAP RFC CONNECTIVITY) (X) (Exemptions applied) - GPTSSC type Application Server ABAP - Items: 4									
<div><div>Value of</div><div>BASELINE SAP POLICY 5-6 (ABAP RFC CONNECTIVITY)</div><div><div>Apply Exemptions</div></div></div>									
<div><div>Compliant</div><div>No</div><div>Not Compliant</div><div>Compliant</div></div>									
Policy Definition BASELINE SAP POLICY 5-6 (ABAP RFC CONNECTIVITY) (X) (Exemptions applied)									
Compliant	No	System	System	System	System	System	System	System	System
Compliant	No	System	System	System	System	System	System	System	System
Compliant	No	System	System	System	System	System	System	System	System
Compliant	No	System	System	System	System	System	System	System	System
Compliant	No	System	System	System	System	System	System	System	System
Compliant	No	System	System	System	System	System	System	System	System
Compliant	No	System	System	System	System	System	System	System	System
Compliant	No	System	System	System	System	System	System	System	System
Compliant	No	System	System	System	System	System	System	System	System
Compliant	No	System	System	System	System	System	System	System	System
Compliant	No	System	System	System	System	System	System	System	System
Compliant	No	System	System	System	System	System	System	System	System
Compliant	No	System	System	System	System	System	System	System	System
Compliant	No	System	System	System	System	System	System	System	System
Compliant	No	System	System	System	System	System	System	System	System
Compliant	No	System	System	System	System	System	System	System	System
Compliant	No	System	System	System	System	System	System	System	System
Compliant	No	System	System	System	System	System	System	System	System
Compliant	No	System	System	System	System	System	System	System	System
Compliant	No	System	System	System	System	System	System	System	System
Compliant	No	System	System	System	System	System	System	System	System
Compliant	No	System	System	System	System	System	System	System	System
Compliant	No	System	System	System	System	System	System	System	System
Compliant	No	System	System	System	System	System	System	System	System
Compliant	No	System	System	System	System	System	System	System	System
Compliant	No	System	System	System	System	System	System	System	System
Compliant	No	System	System	System	System	System	System	System	System
Compliant	No	System	System	System	System	System	System	System	System
Compliant	No	System	System	System	System	System	System	System	System
Compliant	No	System	System	System	System	System	System	System	System
Compliant	No	System	System	System	System	System	System	System	System
Compliant	No	System	System	System	System	System	System	System	System
Compliant	No	System	System	System	System	System	System	System	System
Compliant	No	System	System	System	System	System	System	System	System
Compliant	No	System	System	System	System	System	System	System	System
Compliant	No	System	System	System	System	System	System	System	System
Compliant	No	System	System	System	System	System	System	System	System
Compliant	No	System	System	System	System	System	System	System	System
Compliant	No	System	System	System	System	System	System	System	System
Compliant	No	System	System	System	System	System	System	System	System
Compliant	No	System	System	System	System	System	System	System	System
Compliant	No	System	System	System	System	System	System	System	System
Compliant	No	System	System	System	System	System	System	System	System
Compliant	No	System	System	System	System	System	System	System	System
Compliant	No	System	System	System	System	System	System	System	System
Compliant	No	System	System	System	System	System	System	System	System
Compliant	No	System	System	System	System	System	System	System	System
Compliant	No	System	System	System	System	System	System	System	System
Compliant	No	System	System	System	System	System	System	System	System
Compliant	No	System	System	System	System	System	System	System	System
Compliant	No	System	System	System	System	System	System	System	System
Compliant	No	System	System	System	System	System	System	System	System
Compliant	No	System	System	System	System	System	System	System	System
Compliant	No	System	System	System	System	System	System	System	System
Compliant	No	System	System	System	System	System	System	System	System
Compliant	No	System	System	System	System	System	System	System	System
Compliant	No	System	System	System	System	System	System	System	System
Compliant	No	System	System	System	System	System	System	System	System
Compliant	No	System	System	System	System	System	System	System	System
Compliant	No	System	System	System	System	System	System	System	System
Compliant	No	System	System	System	System	System	System	System	System
Compliant	No	System	System	System	System	System	System	System	System
Compliant	No	System	System	System	System	System	System	System	System
Compliant	No	System	System	System	System	System	System	System	System
Compliant	No	System	System	System	System	System	System	System	System
Compliant	No	System	System	System	System	System	System	System	System
Compliant	No	System	System	System	System	System	System	System	System
Compliant	No	System	System	System	System	System	System	System	System
Compliant	No	System	System	System	System	System	System	System	System
Compliant	No	System	System	System	System	System	System	System	System
Compliant	No	System	System	System	System	System	System	System	System
Compliant	No	System	System	System	System	System	System	System	System
Compliant	No	System	System	System	System	System	System	System	System
Compliant	No	System	System	System	System	System	System	System	System
Compliant	No								

# Basic Adoption Approach

## Define your own policies starting from SAP baseline policies

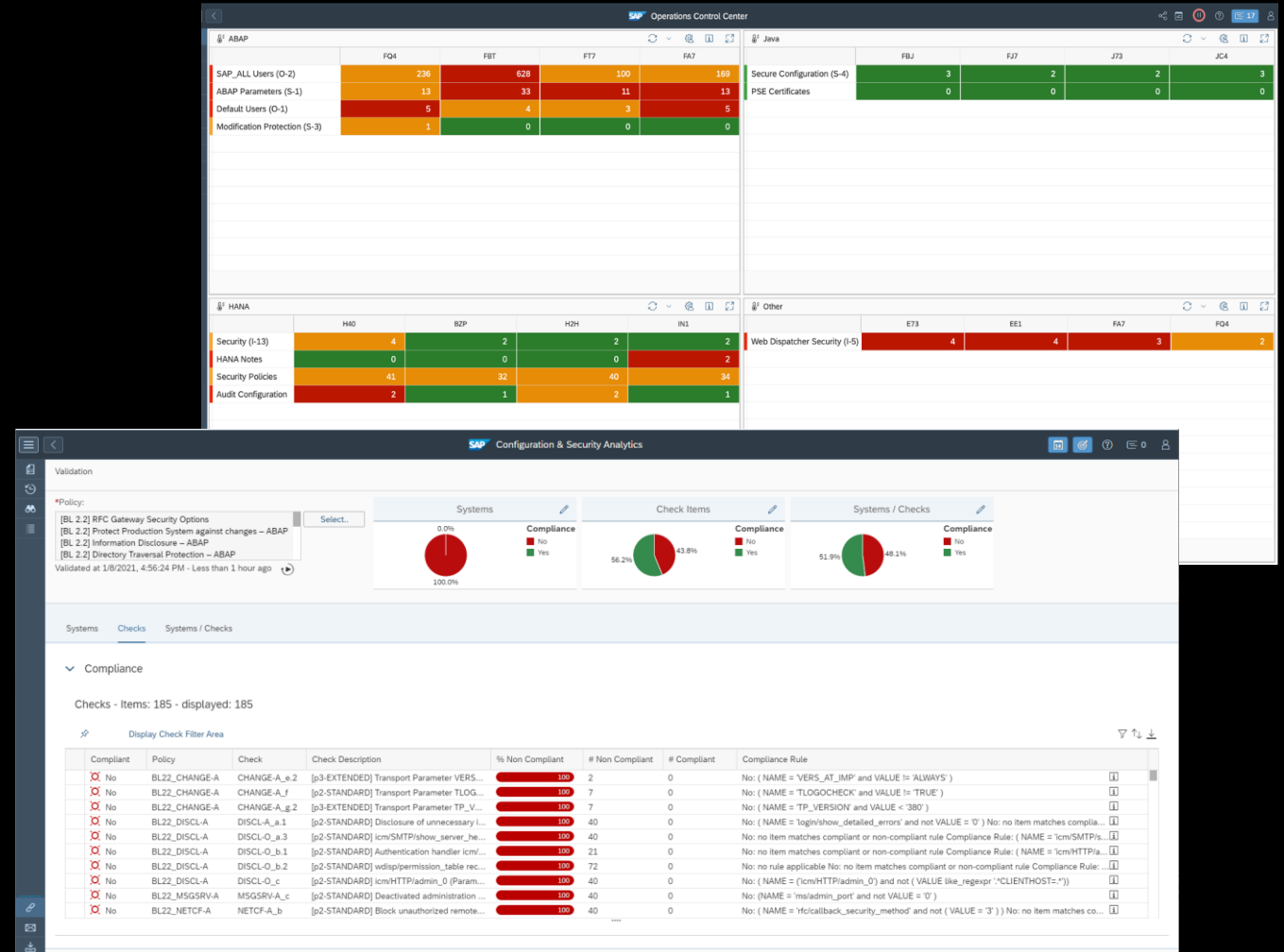


(\*) For the Configuration and Security Analytics in Focused Run the SAP Baseline Policies are available at the GIT:  
<https://github.com/SAP/frun-csa-policies-best-practices/>

# SAP Focused Run Security View – Summary

Ensure secure and compliant operations of hybrid SAP landscape by monitoring and alerting - Increase security efficiency by automating security relevant tasks

- **Effective baseline** of security and compliance measures for hybrid SAP Landscapes.
- Supports **common audit requirements**.
- Supports configuration items at **system, database and operating system level**.
- **Reports and dashboards** are able to accurately reflect **custom-specific contexts**.
- Tight and flexible integration with **Alerting**.
- **Reliable scheduling** and flexible adjustment to **ad-hoc requests**.
- **Extensibility and openness** for integration with custom infrastructures and processes.
- Leverages **latest vendor expertise** and **security updates**.
- **Secure read-only access** to managed systems.



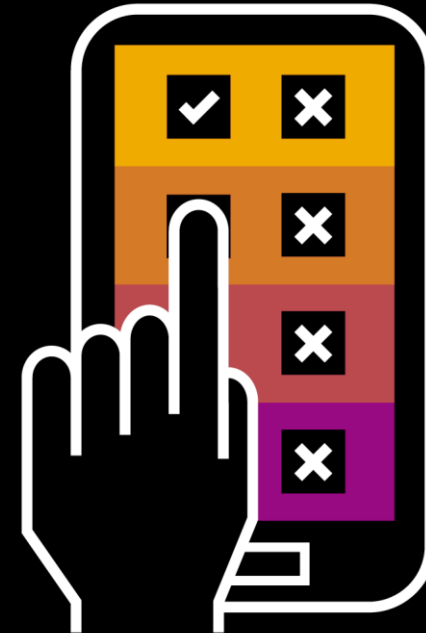


# Poll



# Let's ask some questions!

Please open [www.menti.com](https://www.menti.com)  
and use code **5433 6044**





# Upcoming Events





# Upcoming ALM Events

## ALM Summits

- ALM Summit APJ: End of July 2021
- ALM Summit EMEA: October 19-22, 2021
- ALM Summit NA: December 2021

## Tricentis Webinars

- April 14, 8:30am CET
- April 15, 5pm CET

## What's New in SAP Cloud ALM Q1 Update

[SAP Cloud ALM Implementation Q1 Update:](#)  
April 20, 10:30am CET

[SAP Cloud ALM Operations Q1 Update:](#)  
April 22, 2:30pm CET

Find all ALM Events here:  
<https://support.sap.com/alm-events>

# Mark your calendar!

The next ALM Community Call will take place on

**April 21, 4pm CET / 10am EST.**

The focus topic of this call will be **SAP Cloud ALM.**

All registered participants will receive an e-mail invite for this call.

# Q&A



# Ask you questions here!

**Please ask your questions!**

Use the Q&A panel in the Zoom webinar to ask your questions.





# Thank you.

Contact information:

Benjamin Schneider, SAP SE

[sap\\_cxs\\_social\\_media@sap.com](mailto:sap_cxs_social_media@sap.com)