



# ALM Community Call

## November 25, 2020

CXS Customer Communications and Relations, SAP SE

PUBLIC

# Intro Video

<https://www.youtube.com/watch?v=vzf4PTmzz0A>

# Disclaimer

The information in this presentation is confidential and proprietary to SAP and may not be disclosed without the permission of SAP. Except for your obligation to protect confidential information, this presentation is not subject to your license agreement or any other service or subscription agreement with SAP. SAP has no obligation to pursue any course of business outlined in this presentation or any related document, or to develop or release any functionality mentioned therein.

This presentation, or any related document and SAP's strategy and possible future developments, products and or platforms directions and functionality are all subject to change and may be changed by SAP at any time for any reason without notice. The information in this presentation is not a commitment, promise or legal obligation to deliver any material, code or functionality. This presentation is provided without a warranty of any kind, either express or implied, including but not limited to, the implied warranties of merchantability, fitness for a particular purpose, or non-infringement. This presentation is for informational purposes and may not be incorporated into a contract. SAP assumes no responsibility for errors or omissions in this presentation, except if such damages were caused by SAP's intentional or gross negligence.

All forward-looking statements are subject to various risks and uncertainties that could cause actual results to differ materially from expectations. Readers are cautioned not to place undue reliance on these forward-looking statements, which speak only as of their dates, and they should not be relied upon in making purchasing decisions.



# Welcome and Introduction



# What is the ALM Community Call?

- A monthly call for the whole ALM community
- One focus topic, but news from all ALM areas
- Lots of room for product demos and Q&A with additional experts in the “back” to answer your questions



# ALM Community Call: Agenda for November 25, 2020

## Focus topic: SAP Focused Run

Welcome and Introduction

ALM News and Updates

SAP Focused Run

Upcoming Events and Webinars

Q&A



Please use the Q&A tool in Zoom to ask your questions also during the presentation!

# Speakers & Background Experts



Ben Schneider



Tim Steuer



Stefan Lahr



Heinz Ludwig Wolter



Cay Rademann



Evan Stoddard

# The Application Lifecycle Management Product Portfolio of SAP





# The Application Lifecycle Management Product Portfolio of SAP



# ALM News & Updates



# Community News

Follow [Tim's To-Do list](#) to find out what's going on in ALM!

Follow our Community Tags to stay up to date!

[SAP Cloud ALM](#)

[SAP Solution Manager](#)

[SAP Focused Run](#)



# ALM Summit EMEA recap

## Q&A document

At the ALM Summit EMEA 2020, held virtually from October 6 to 9, many questions were asked in the chat during the keynotes.

We have collected them all, provided answers and published these questions and answers in a document which you can [download](#).

## Session recordings

The session recordings are available in the [event app](#) or in this [playlist on YouTube](#).

The image shows the cover of a document titled "SAP ALM Summit 2020 Questions and Answers". It includes a status date of "November 2020" and a "Table of Contents" with sections for Preamble, Cross-ALM, SAP Solution Manager, SAP Focused Run, and SAP Cloud ALM, each with a corresponding page number.

<b>SAP ALM Summit 2020</b>	
Questions and Answers	
Status: November 2020	
<b>Table of Contents</b>	
<b>PREAMBLE</b> .....	5
<b>CROSS-ALM</b> .....	6
SAP Cloud ALM will support on-premise solutions in the future. How will it differ from SAP Solution Manager? .....	
Last year, SAP BW Process Chain monitoring was on the roadmap. Where is it now? .....	
<b>SAP SOLUTION MANAGER</b> .....	6
Is it planned to upgrade the ABAP stack of Solution Manager? SAP_BASIS 7.40 will soon be at the end of maintenance. ....	
Talking about EXTENDED MAINTENANCE for SAP Solution Manager - Does this mean that SAP Solution Manager will be replaced? .....	
Will it be possible to integrate the Readiness Check with a standard SAP Solution Manager without Focused Build? .....	
Can Change Request Management (ChaRM) and Focused Build co-exist? .....	
What is the correct way to create a process variant in Solution Documentation? Using site or some other mean? .....	
Focused Build integrates the Test Suite of SAP Solution Manager. What about integration with Tricentis? ...	
Is it true that Focused Build does not integrate with any other test tool? We wanted to integrate with HP ALM and were told we cannot integrate. ....	
Do you plan to integrate CBTA with Focused Build? .....	
We have done a comparison of Tricentis LiveCompare and SAP Solution Manager BPCA and SEA. We found not significant benefit for us, especially with semi-dynamic TBOMs and library generation cockpit. ....	
Is there any plan for semi-dynamic TBOM generation for Fiori/UI5 application? .....	
Is it possible to integrate SAP Solution Manager 7.2 Change Request Management into e.g. JIRA via an API? .....	
Are there APIs in SAP Solution Manager to connect to the SAP cloud connector? .....	
<b>SAP FOCUSED RUN</b> .....	8
Why would customers need SAP Focused Run when SAP Cloud ALM also has real user monitoring and single message monitoring? .....	
<b>SAP CLOUD ALM</b> .....	8

THE BEST RUN 

[https://support.sap.com/content/dam/support/en\\_us/library/ssp/alm/QA\\_ALM.pdf](https://support.sap.com/content/dam/support/en_us/library/ssp/alm/QA_ALM.pdf)



# Managing **Hybrid** Solutions

## Best Practices



Customers are looking for advice on how to **manage hybrid solutions**

We have collected **ALM best practices** to be published in a series of five white papers:

- Hybrid Operations
- Monitoring, managing and improving business processes of SAP customers
- Support processes for an Intelligent Enterprise
- Service delivery infrastructure for the Intelligent Enterprise
- Agile implementation and maintenance of SAP Solutions

<https://support.sap.com/en/alm/hybridALM.html>





## ALM Advent Calendar 2020 #ALMADVENT

**It's THIS time of the year again (soon)!**

Starting on **December 1st**, we will open a virtual door each workday on our ALM Advent Calendar, highlighting our most important (and enjoyable!) ALM assets.

You can find the daily door opening on the

[ALM Advent Calendar Blog](#)

or follow #ALMADVENT on Twitter and join the fun!

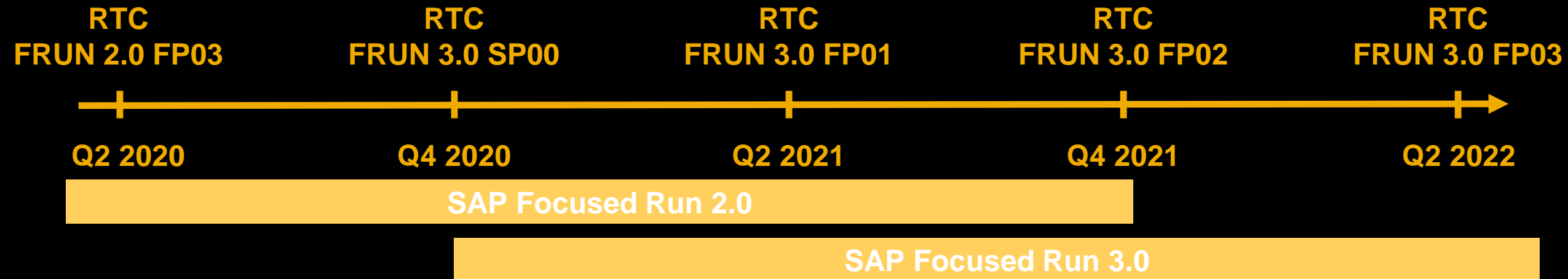


# SAP Focused Run



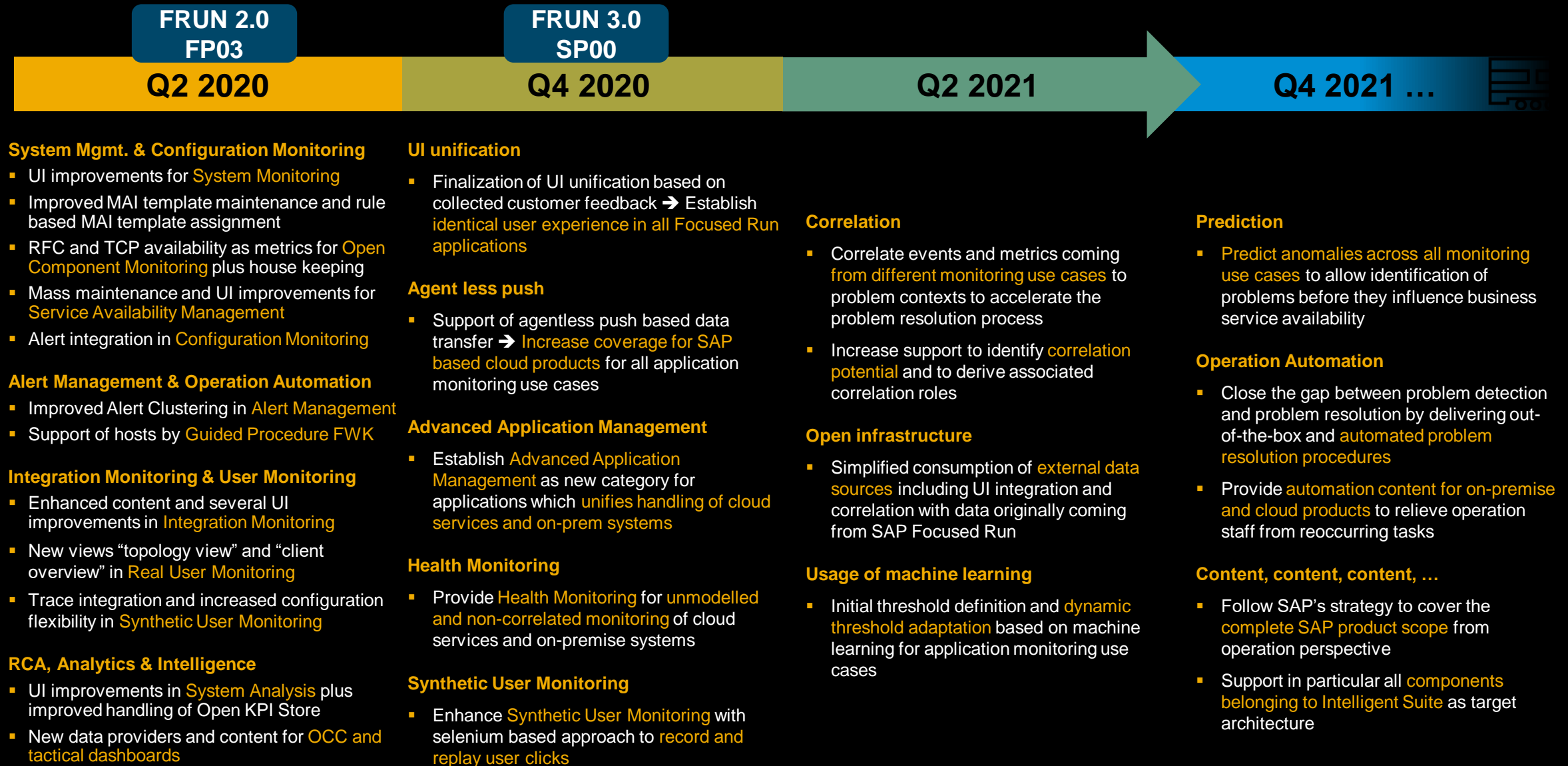
# SAP Focused Run – Release Strategy

- **Continuous delivery of new innovations** based on customer feedback
- Keeping functional focus on **application operations for hybrid landscapes**
- **Three year release cycles** with delivery of **two delivery units per year** → **One year overlap** to change to next release
- **Regular technology updates** for ABAP, HANA and SAPUI5 to use latest innovations





# SAP Focused Run - Roadmap



# SAP Focused Run – Use Cases & High Level Architecture

**Advanced  
Integration  
Monitoring  
(AIM)**

**Advanced  
User  
Monitoring  
(AUM)**

**Advanced  
Application  
Management  
(AAM)**

**Advanced  
Configuration  
Monitoring  
(ACM)**

**Advanced  
System  
Management  
(ASM)**

**Advanced  
Event & Alert  
Management  
(AEM)**

**Advanced  
Root Cause  
Analysis  
(ARA)**

**Advanced  
Analytics &  
Intelligence  
(AAI)**

## SAP Focused Run - Application Foundation

Landscape Management Database

Simple Diagnostic Agent & SAP Host Agent

Monitoring & Alerting Infrastructure

Expert Scheduling Framework

Simple System Integration

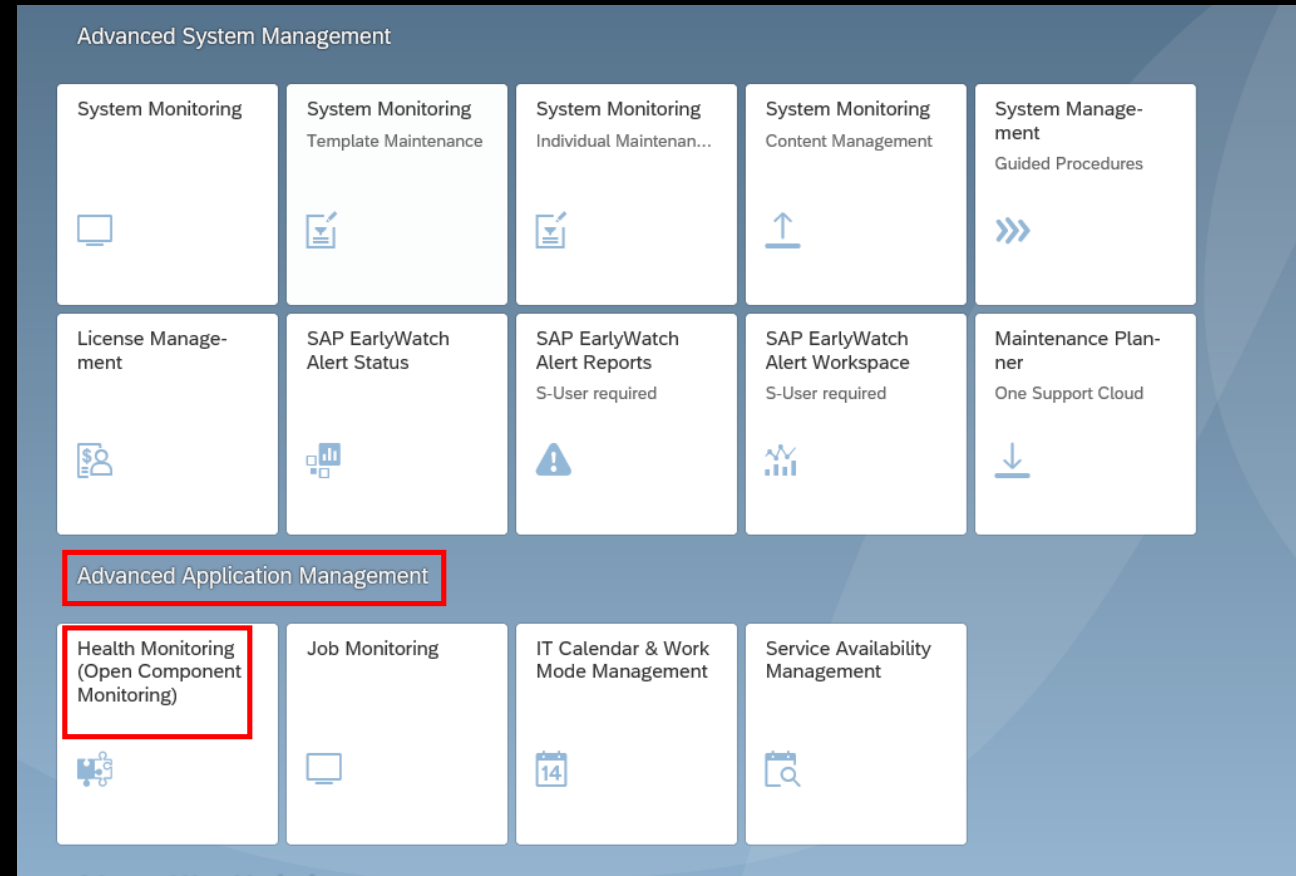
Guided Procedure Framework

**SAP HANA + SAP NetWeaver ABAP + SAPUI5 as Technology Foundation**

# SAP Focused Run Launchpad - New Group Advanced Application Management

New features are:

- New Group: **Advanced Application Management (AAM)** introduced
  - Consists of Health Monitoring, Job Monitoring, IT Calendar & Work Mode Management and Service Availability Management
- **Open Component Monitoring** renamed to **Health Monitoring**
  - Enhanced functionality for monitoring of Applications which are covering **cloud services** as well as **on-premise systems**
  - New page **Application Check Metrics**



# Advanced Application Management



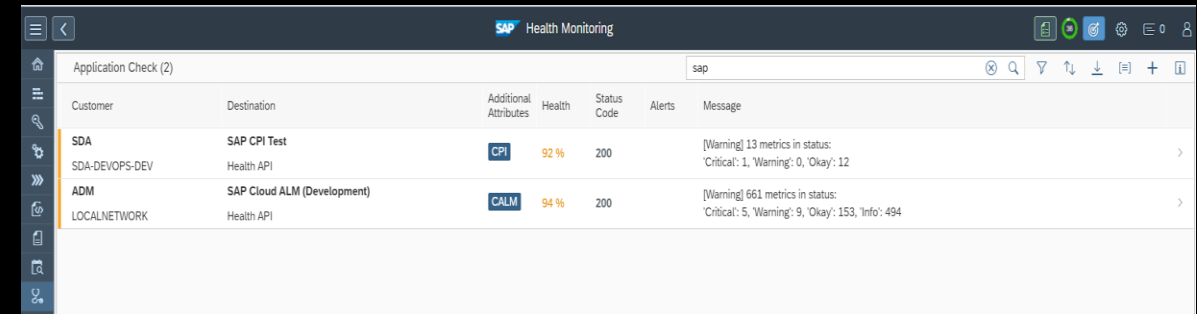


# Health Monitoring

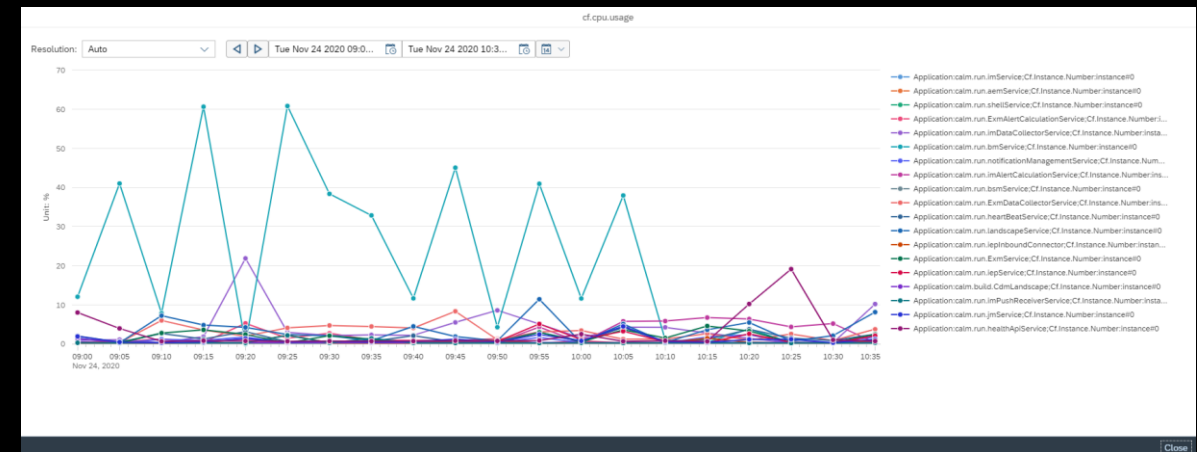
Lab Preview

New features are:

- New tab **Application Check** measure the health of an cloud application based on collected status information and performance metrics.
- The cloud application implements an API. The **HTTP Health API** is called from a data collector running on a Simple Diagnostics Agent in the customer network. The data collector uses the API to extract metrics (key Performance indicators) from the cloud application.
- SAP **public cloud applications** will implement the HTTP Health API step by step



Customer	Destination	Additional Attributes	Health	Status Code	Alerts	Message
SDA	SAP CPI Test	CPI	92 %	200		[Warning] 13 metrics in status: 'Critical': 1, 'Warning': 0, 'Okay': 12
ADM	SAP Cloud ALM (Development)	CALM	94 %	200		[Warning] 661 metrics in status: 'Critical': 5, 'Warning': 9, 'Okay': 153, 'Info': 494



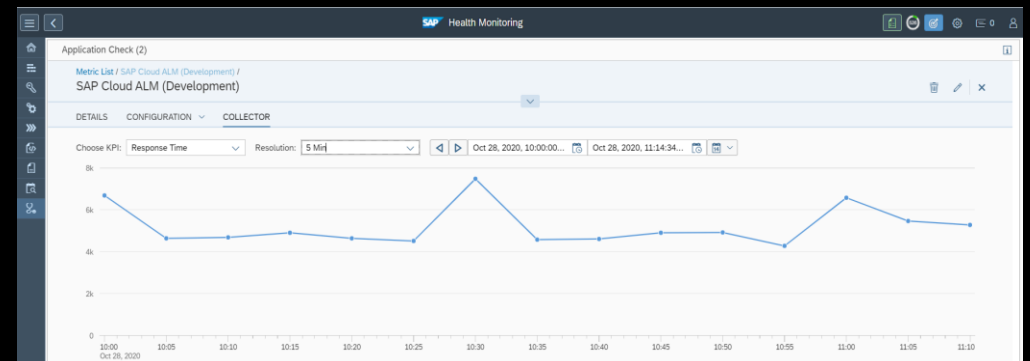
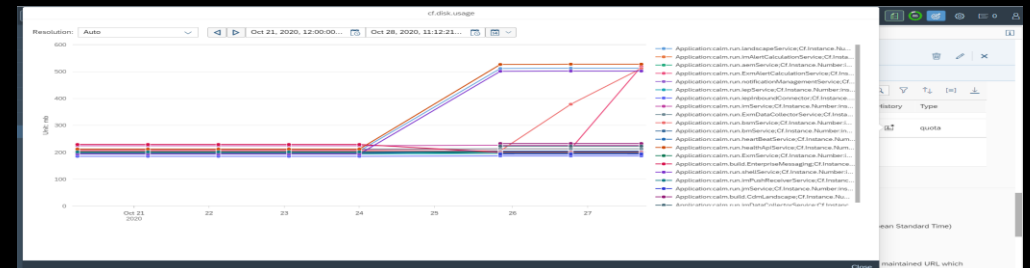
# Health Monitoring

Lab Preview

New **Application Check** UI features are:

- **Details:**
  - Display **actual rating** of a Metric e. g. green, red etc.
  - Display **historical monitoring** data for a Metric
- **Configuration:**
  - Configure a Destination:
    - Specify Parameters for data collection
    - Specify Alert Configuration
    - Specify Threshold Configuration
- **Collector:**
  - Check **collection of monitoring data** for a Destination

Name	Details	Label	Timestamp	Rating	Value	History	Type
actual.health	(1)	Application: calm.run.landscapeService UseCase: LMS	May 31, 2020, 1:21:47 AM		The Microservice is up and running	status	status
CALM.Connectivity.SupportBackbone	(1)	Application: calm.run.landscapeService Landscape OwnerId: af2110af-8a26-4392-ba08-3d3e2b08a03c	Oct 26, 2020, 11:02:09 AM		The connection took the landscape information serv...	status	status
CALM.Endpoints	(1)	Application: calm.run.landscapeService EndpointName: FastGauss_E_01	Oct 26, 2020, 11:02:09 AM	✗	The connection test was not successful for the endpoint...	status	status
CALM.ImportSubscriberServices.Job	(1)	Application: calm.run.landscapeService Landscape OwnerId: af2110af-8a26-4392-ba08-3d3e2b08a03c	Oct 26, 2020, 11:02:09 AM		The daily LIS Import, labeled as 'Landscape_LIS_EveryDay_ca...	status	status
CALM.Microservice.Availability	(1)	Application: calm.run.jndService	Oct 26, 2020, 11:02:11 AM		The Microservice is up and running	status	status



# Health Monitoring



New **Application Check** configuration features are:

- **Alert configuration** for a **Destination**

When Health Monitoring rates a Metric as Critical or Fatal an Alert is created. The Alert configuration defines what will happen when an Alert is created:

- Categorize an Alert by assigning an Alert Category to display Alerts by category in Alert Management application
- Send Notification when Alert is created or closed
- Create Alert for each Metric of a Destination or for each Label of a Metric
- Forward Alerts to external systems (e. g. ticket systems)
- Maintain Alert Rules to restrict the Metrics for which an Alert will be created (e. g. all Metrics with a Metric Name containing 'CALM').

- **Threshold configuration** for a **Metric of a Destination**

Define when a Metric will receive a certain rating e. g. Info (blue), Ok (green), Warning (yellow), Critical (red), Fatal (red).

A screenshot of the "Alert Details" configuration form. It includes fields for "Alert Active" (toggle), "Alert Name" (CALM Metrics on wdfibmd21853 unavailable), "Severity" (4), "Notification Closed" (dropdown), "Alert Category" (Health), "Notification Variant" (dropdown), "Outbound Variant" (dropdown), "Separate by Label" (calm.run.landscapeService), and "Alert Documentation" (Metric containing CALM are unavailable). Below these is the "Alert Rules" section with a rule: "+ Metric Name contains CALM". A "Cancel" button is at the bottom right.A screenshot of the "Threshold Details" configuration form. It includes fields for "Threshold Active" (toggle OFF), "Metric" (CALM.Endpoints), "Threshold Type" (Status), "Measured Rating" (Info, Ok, Warning, Critical, Fatal), "Use delay" (toggle OFF), and "Set to critical (minutes)" (0). A "Cancel" button is at the bottom right.

# Health Monitoring

Lab Preview

New features are:

- **Mass Maintenance for Availability Metrics**

- Create or change several Availability Metrics by performing the following steps:

- 1) Create a csv-file which contains the Metrics and their parameter values. If you omit a parameter value a default value will be used
- 2) Create a variant which contains a mapping between the values in the csv-file and the parameters of the Metric in the Health Monitoring application
- 3) Execute the Mass Maintenance in the Health Monitoring application to create or update the Metrics

**Result:**

1)

```
mhHTTPMetricUpload.csv - Notepad
File Edit Format View Help
mh202010191040, https://www.sap.com
mh202010191041, https://www.google.de
```

2)

Mass Maintenance

\*Select metric type: HTTP Availability  
\*Select variant: TestCase HTTP-Avail  
\*Select csv file: mhHTTPMetricUpload... Browse...  
Test validity for metrics

3)

Mass Maintenance

Planned Metrics				Change Option for selected entries			Skip	Create	Update
<input checked="" type="checkbox"/>	Destination	Customer	Status	Option					
<input checked="" type="checkbox"/>	TestCaseMetric: mh202010191040	LOCALNETWORK	●	Skip Create					
	HTTP Availability								
	Additional Attributes:								
	Connection Parameter:								
<input checked="" type="checkbox"/>	TestCaseMetric: mh202010191041	LOCALNETWORK	●	Skip Create					
	HTTP Availability								
	Additional Attributes:								
	Connection Parameter:								

Execute for Metrics

Mass Maintenance

Changed Metrics		
Destination	Customer	Result
TestCaseMetric: mh202010191040	LOCALNETWORK	CREATED
HTTP Availability		
Additional Attributes:		
Connection Parameter:		
TestCaseMetric: mh202010191041	LOCALNETWORK	CREATED
HTTP Availability		
Additional Attributes:		
Connection Parameter:		

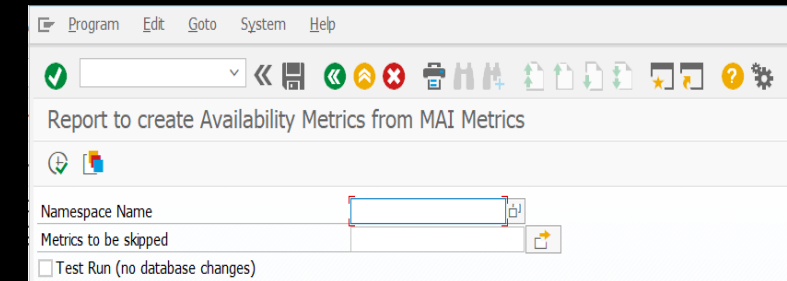
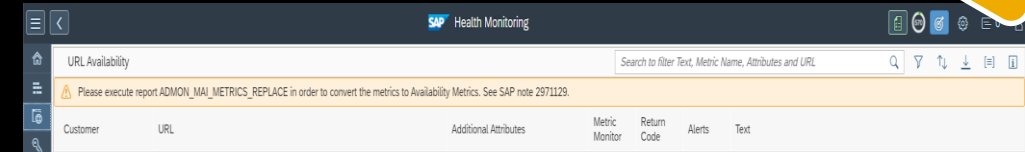


# Health Monitoring

Lab Preview

New features are:

- **Conversion of Metrics of type Host Availability, URL Availability, TCP Port Availability, RFC Availability to Availability Metrics**
  - When you used Metrics of type Host Availability, URL Availability, TCP Port Availability, RFC Availability in FRUN20 and you upgraded your Focused Run system to FRUN30 SP00 then you are notified in the Health Monitoring application to run a report which converts these Metrics to Availability Metrics (see SAP Note 2971129).
  - The conversion of Metrics is required because Availability Metrics offer a greater range of functionality than the 'old' Metrics. When the execution of the report finishes you will find the Metrics you created in FRUN20 in tab 'Availability' in the Health Monitoring application. The tabs which refer to the 'old' Metrics are hidden.



Customer	Destination	Additional Attributes	Availability	Certificate	Response Time	Status Code	Alerts	Message
SDA	MBR - HTTP Availability GREEN	Manu DOMManu	100 % ↑ 17 days 23 hrs		93 ms	200		[OK] URL http://www.sap.com called successfully. It took 93 ms. [Redirect...
SDA-DEVOPS-DEV	HTTP Availability		100 % ↑ 17 days 23 hrs		217 days	392 ms	200	[OK] URL https://postman-echo.com/post called successfully. It took 392 ms.
SDA	MBR - Payload HTTP Availability		100 % ↑ 17 days 23 hrs		83 ms	200		[OK] URL http://www.sap.com called successfully. It took 83 ms. [Redirect...
SDA-DEVOPS-DEV	HTTP Availability		100 % ↑ 17 days 23 hrs					
SDA	mh20200206DefURL Availability		100 % ↑ 17 days 23 hrs					
SDA-DEVOPS-DEV	HTTP Availability		100 % ↑ 17 days 23 hrs					

# Synthetic User Monitoring

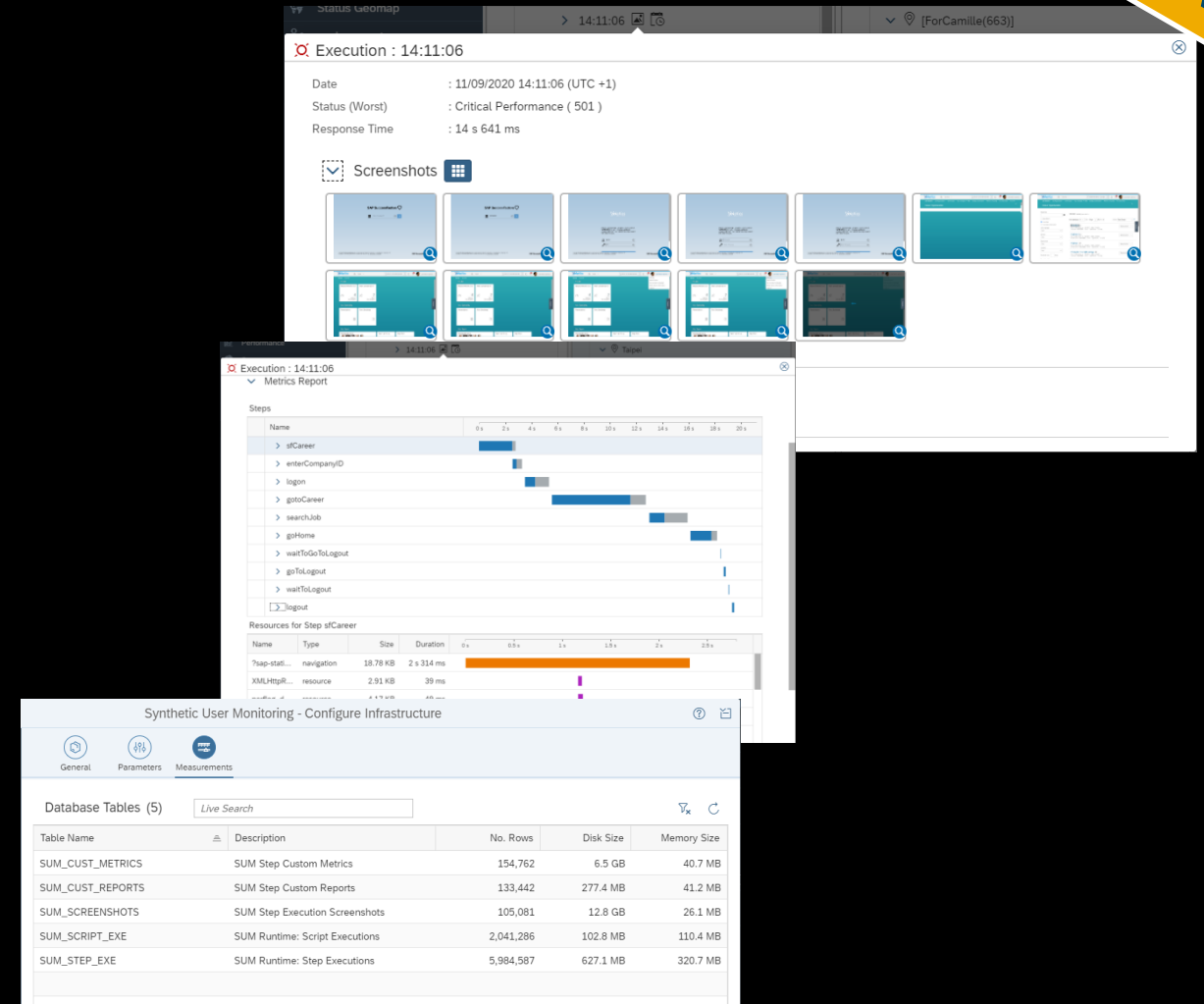


# Synthetic User Monitoring

Lab Preview

New features are:

- Possibility to monitor web-application via **Selenium IDE** script – i.e. considering the client rendering time in the monitoring of the Performance.
- Capture of execution **screenshots** (for Selenium scripts only)
- Capture of **web-browser performance metrics** (for Selenium scripts only)
- Memory consumption of **screenshots** is **configurable** and **transparent** via housekeeping information





# Upcoming Events



# What's New Webinar: SAP Focused Run 3.0 SP00

This event celebrates the launch of SP00 for **SAP Focused Run 3.0**. Learn from our experts about the highlights in this feature-packed release.

**Wednesday, December 9, 2020 2:30 PM - 3:30 PM (UTC+01:00)**

[Register here](#)

IMPORTANT: To access the SAP Learning Hub, edition for SAP Enterprise Support, a [one-time sign up](#) is required.

A valid [S-user](#) is required to attend Expert Webinar sessions.

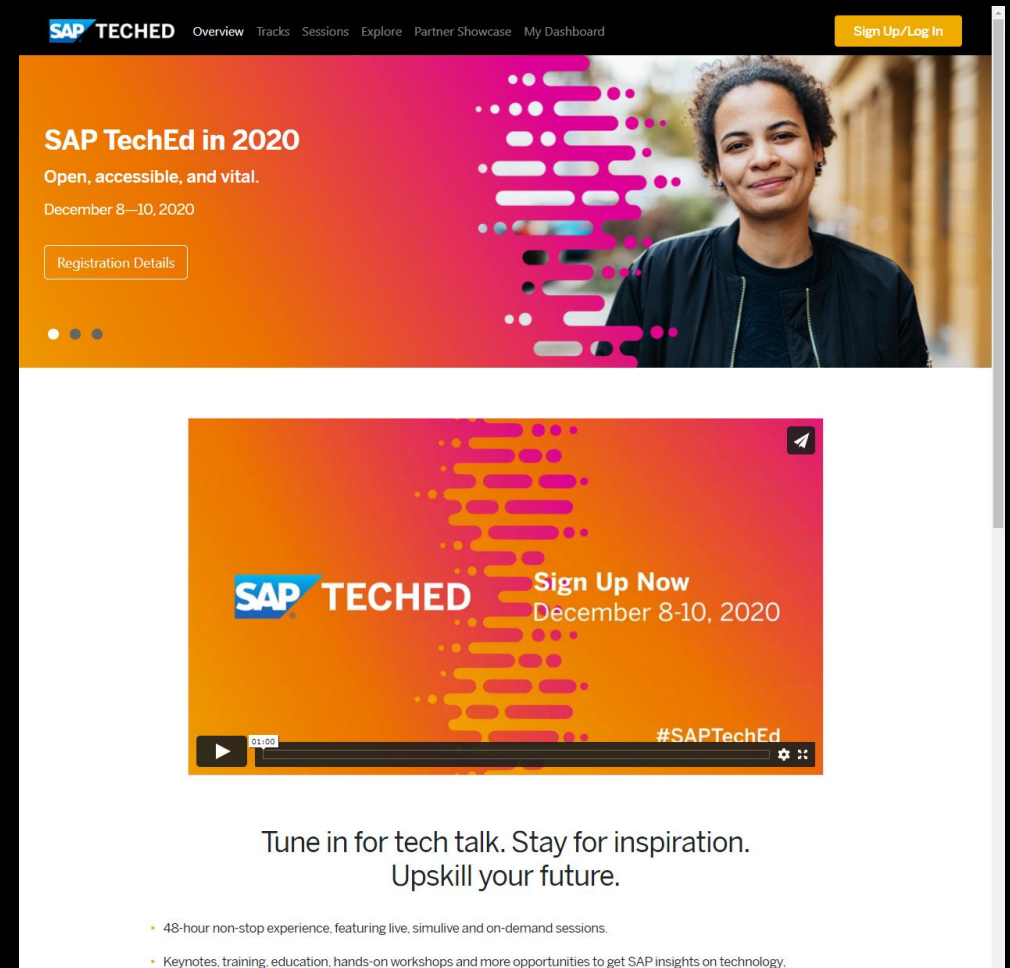
If you have any questions about your scheduled offering, course changes, please contact [SAP ES Academy](#)



# SAP TechEd 2020

Find all ALM-related sessions at SAP TechEd 2020 in [this blog](#).

Register for free and plan your agenda on the [SAP TechEd 2020 website](#)!



The screenshot shows the SAP TechEd 2020 website. The top navigation bar includes the SAP TechEd logo, links for Overview, Tracks, Sessions, Explore, Partner Showcase, and My Dashboard, and a Sign Up/Log In button. The main header features a large orange and pink gradient banner with the text "SAP TechEd in 2020", "Open, accessible, and vital.", and "December 8—10, 2020". A "Registration Details" button is visible. To the right of the text is a photo of a smiling woman. Below the banner is a video player showing a promotional video for SAP TechEd 2020, with the text "Sign Up Now December 8-10, 2020" and the hashtag #SAPTechEd. Below the video player, the text "Tune in for tech talk. Stay for inspiration. Upskill your future." is displayed. At the bottom, there are two bullet points: "48-hour non-stop experience, featuring live, simulative and on-demand sessions." and "Keynotes, training, education, hands-on workshops and more opportunities to get SAP insights on technology."



# Mark your calendar!



The next ALM Community Call will take place on

**December 16, 4pm CET / 10am EST.**

**Special year-end review and outlook session!**

**All registered participants will receive an e-mail invite for this call.**



# Q&A



# Ask you questions here!

**Please ask your questions!**

Use the Q&A panel in the Zoom webinar to ask your questions.





**Happy Thanksgiving!**





# Thank you.

Contact information:

Benjamin Schneider, SAP SE

[sap\\_cxs\\_social\\_media@sap.com](mailto:sap_cxs_social_media@sap.com)