



# The Future of ALM

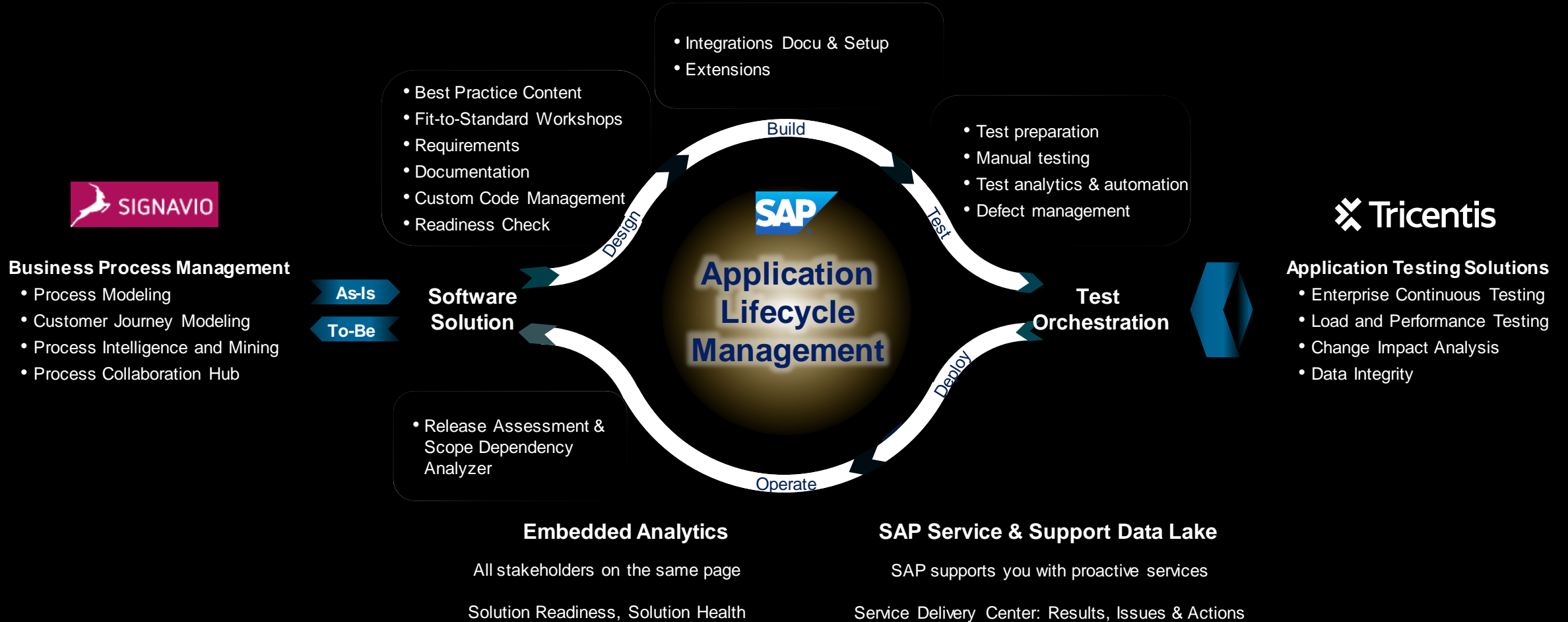
## Business Transformation Suite

Stefanie Kübler, Marc Thier, SAP SE  
May 17, 2022

Public

# Business Transformation Suite Wins

Application Lifecycle Management as integration engine for Business Transformation included in RISE with SAP



**One methodology and tool chain, one process hierarchy, best practices, E2E traceability and proactive support**

Standard

Manage Cards, Data Sync, Manage Projects

Project: S/4HANA Cloud Scope:

Adapt Filters (1)

### Project

Project Status: **On Track**

Overall Task Progress:

Current Phase: **Explore**

Ends on Feb 12, 2022  
Remaining -46 Days

### Project Progress

By Task Completion 5 of 6

Overall Progress 43 %

Explore (Current Phase) 65 %

Realize 14 %

Deploy 0 %

Hypercare 0 %

Run 0 %

### Today

Failed Test Runs 2

Blocked Tasks 3

Overdue Tasks 137

Unassigned Tasks 135

### Upcoming Tasks

4 Assigned to Me, 37 Assigned to My Roles, 158 All Tasks

Assigned to: Me

- Document Initial Configuration Settings for SAP C... Feb 12, 2022 In Progress
- Document Preset Parameters for Manage Your Sol... Feb 12, 2022 In Progress
- Execute Initial Setup of the Quality System via SA... Mar 26, 2022 In Progress
- Financial closing needs to be configured Open

### Upcoming Events

- Phase Deploy Ends Apr 9, 2022
- Milestone Actual Go-Live Apr 10, 2022
- Milestone Planned Go-Live Apr 10, 2022
- Phase Hypercare Ends Apr 20, 2022

### My To-Dos

Today

Overdue Tasks 4

Assigned Tasks 12

Blocked User Stories 0

### Tasks

By Status: Me

### Task Distribution

By Scopes

### Solution Processes per Scope

Scope	Count	Open
HR Germany	27	1
Finance Germany	11	14
Procurement	10	4
Marketing Cloud	6	0
Sales Germany	3	2

### Solution Process Statuses

### Requirements per Workstream

Testing 11 More

### Requirements

By Status

### Features

By Status

### Test Case Preparation

# SAP Cloud ALM References

PUBLIC



**“Task management functionality in the SAP Cloud ALM solution brings the SAP Activate methodology to life and helps us **orchestrate implementations end to end**. It guides the project team with its embedded analytics capabilities and provides the necessary motivation to bring activities to a close. Tightly integrated process and requirements management allows us to extend best practices supported by SAP and adopt solutions with industry-specific demands.”**

Gabriel Schäffer, Project Lead, All for One Group SE




**all for one** Group  
 All for One Group SE  
 Frankfurt, Germany  
[www.afo-one.com](http://www.afo-one.com)

Industry: Professional services  
 Employees: 1,200  
 Revenue: €267 million (2020)

Featured Solutions and Services: SAP Cloud ALM and SAP Activate


THE BEST RUN 

PUBLIC



**“The SAP Cloud ALM solution, which includes built-in guides and best practices, has been a key enabler to accelerate adoption of cloud solutions from SAP. We help our clients leverage the power of SAP Cloud ALM for **complete lifecycle management of multiple cloud solutions**. Our solutions have enabled SAP Cloud ALM to extend across collaboration platforms.”**

Syed Yousuff, Practice Head, Cloud, IT Infrastructure and ALM, Robert Bosch Engineering and Business Solutions Private Limited




**BOSCH**  
 Invented for life

Robert Bosch Engineering and Business Solutions Private Limited  
 Bangalore, India  
[www.rbe.com](http://www.rbe.com)

Industry: Machinery, High tech and professional services  
 Employees: 22,500  
 Revenue: €1 billion

Featured Solutions and Services: SAP Cloud ALM and SAP Service and Support


THE BEST RUN 

PUBLIC



**“Using the SAP Early Adopter Care program for the SAP Cloud ALM solution, we enabled integration monitoring and business process monitoring for SAP S/4HANA Cloud. The initial setup through the configuration of services was extremely fast and simple. SAP Cloud ALM **supports the adoption of a cloud-first strategy within our company**, providing centralized monitoring for cloud and on-premise systems.”**

Frederick-Claud Dimmer, Expert IT SAP Basis and Interfaces, KWS SAAT SE & Co. KGaA



**KWS**


KWS SAAT SE & Co. KGaA  
 Oelde, Germany  
[www.kws.de](http://www.kws.de) (German)

Industry: High products  
 Employees: 1,500  
 Revenue: €1.1 billion

Featured Solutions and Services: SAP Cloud ALM, SAP Early Adopter Care, SAP S/4HANA Cloud, and SAP Service and Support


THE BEST RUN 

PUBLIC



**“The SAP Cloud ALM solution takes a top-down approach and compliments our other tools. The built-in guided help is very intuitive. And with the SAP Early Adopter Care program, we **gain greater flexibility**. We can use SAP Cloud ALM in our own cloud while leveraging expert support from SAP.”**

Peter Moberg, Vice President, Rizing LLC




**RIZING**


Rizing LLC  
 Stamford, Connecticut  
[www.rizing.com](http://www.rizing.com)

Industry: Professional services  
 Employees: 750

Featured Solutions and Services: SAP Cloud ALM, SAP Early Adopter Care, and SAP Service and Support


THE BEST RUN 

PUBLIC



**“SAP Cloud ALM enables us to connect all of our cloud products to better **streamline our daily operations**. It gives us transparency into system status, from both a business and integration-scenario perspective.”**

Chengbo Yu, CIO, Asia Pacific Region, REHAU Polymer China Co. Ltd




**REHAU**

REHAU Polymer China Co. Ltd  
 Taikang, China  
[www.rehaucn.com](http://www.rehaucn.com)

Industry: Mill products  
 Employees: 452  
 Revenue: US\$13.71 million (2019)

Featured Solutions and Services: SAP Cloud ALM solution and SAP Service and Support

THE BEST RUN 

PUBLIC



**“Thanks to **Business Process Monitoring** and **Real User Monitoring** applications enabled in the SAP Cloud ALM solution, we can verify how rollout projects are being adopted, following business KPIs, and see how users are using SAP S/4HANA Cloud, checking the most-used apps. The next step in our road map with SAP Cloud ALM is to leverage **Integration Monitoring** to have a better view on ERP data exchange.”**

Manuel Lozano, Business Support Systems and Business Intelligence Manager, Ezentis



**EZENTIS**

Bariloche, Spain  
[www.ezentis.com](http://www.ezentis.com)

Industry: Telecommunications  
 Employees: 15000  
 Revenue: US\$441 million

Featured Solutions and Services: SAP Cloud ALM and SAP S/4HANA Cloud

THE BEST RUN 

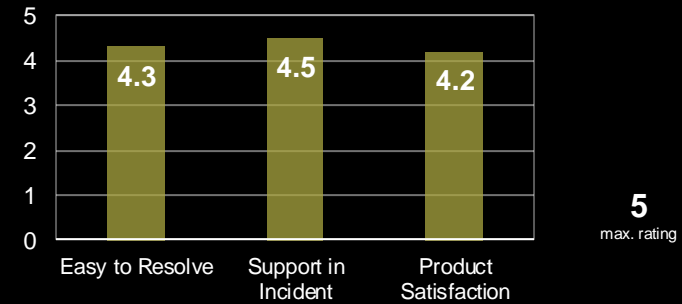
# SAP Solution Manager – Happy customers

## Productive Customers

### All Time High

SAP Solution Manager 7.2: **12.265\***  
 Focused Build & Insights: **1.652\***

## Customer Satisfaction



## Quality (tickets)

Year-over-Year – **19%\***



## Customer Connection 2021

Delivery more than **70%**

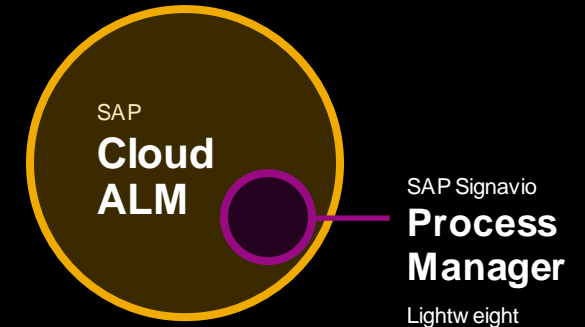
Topics	Qualified	Accepted
Change & Release Management	~80%	~70%
Test Suite	~75%	~65%
Process Management	~70%	~60%
<b>Overall</b>	<b>~75%</b>	<b>~65%</b>

Update in Delivery Call next week

# Integration of SAP Signavio and SAP Cloud ALM



**One process workspace  
One modeling experience**



## Leading SAP tool for managing business processes

### Professional business process modeling

- Full functionalities of SAP Signavio Process Manager with exclusive model types
- Collaboration
- Integration to other Signavio features as process mining, process governance and journey modeling

## Leading SAP tool for implementing & operation SAP solutions

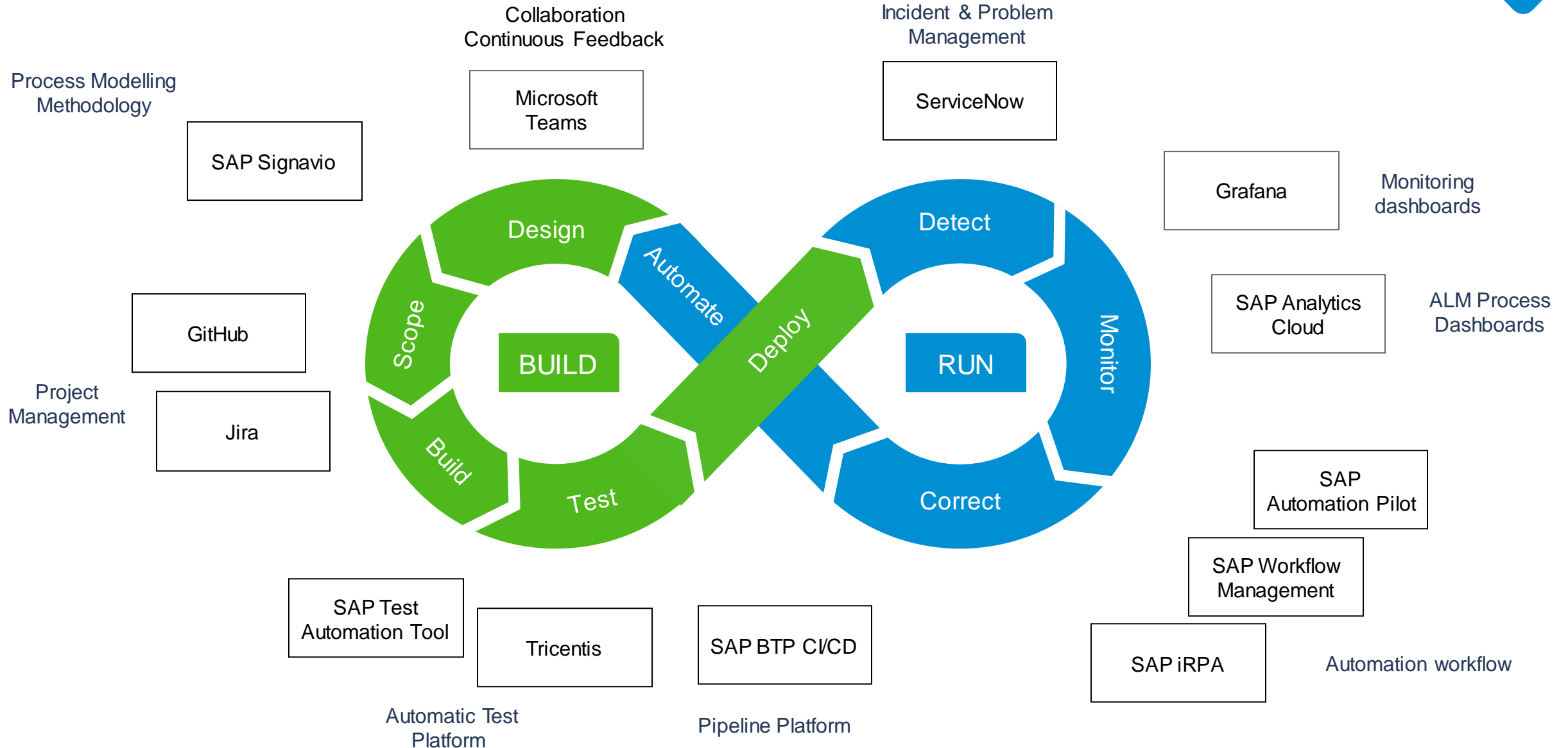
### Built-in modeling editor for

- Solution process modeling & documentation
- Integration to other ALM features as requirements management, project management, test management and others

*Lightweight Process Management in SAP Cloud ALM will be integrated within fair use (detailed usage rights will be communicated on ALM summit)*

# Extensibility Using APIs for SAP Cloud ALM

## Integrated Tools



# Extensibility Using APIs for SAP Cloud ALM

## APIs Catalog

### Current



REST API

#### SAP Cloud ALM Analytics

The SAP Cloud ALM Analytics API is used to unify access to all analytics data produced by SAP Cloud ALM.

Active



REST API

#### SAP Cloud ALM Tasks

Allows to get or create tasks in task management.

Active



REST API

#### SAP Cloud ALM Projects

Allows to get, create, modify or delete projects.

Active



REST API

#### SAP Cloud ALM Test Automation

Allows cloud-based test automation providers to integrate with SAP Cloud ALM

Active

### Planned



REST API

#### SAP Cloud ALM Event Situation

This API is used to update Event Situation linked to an external application. It allows to change the status or to add an addition comment to an existing Alert Situation

In Progress



REST API

#### SAP Cloud ALM Process Scope

The Process Scope API allows to get information and manipulate the SAP Cloud ALM solution process scope.

Planned Q3/Q4



REST API

#### SAP Cloud ALM Test Cases

The SAP Cloud ALM Test Cases API is used to manage and manipulate test cases.

Planned Q4



REST API

#### SAP Cloud ALM Business Services Events

Get events on Business Services like planned maintenances, disruption or downtimes for your cloud services and technical systems..

In Progress



REST API

#### SAP Cloud ALM Resource Changes

Let applications watch for changes to SAP Cloud ALM REST resources by notifying external application.

In Progress



REST API

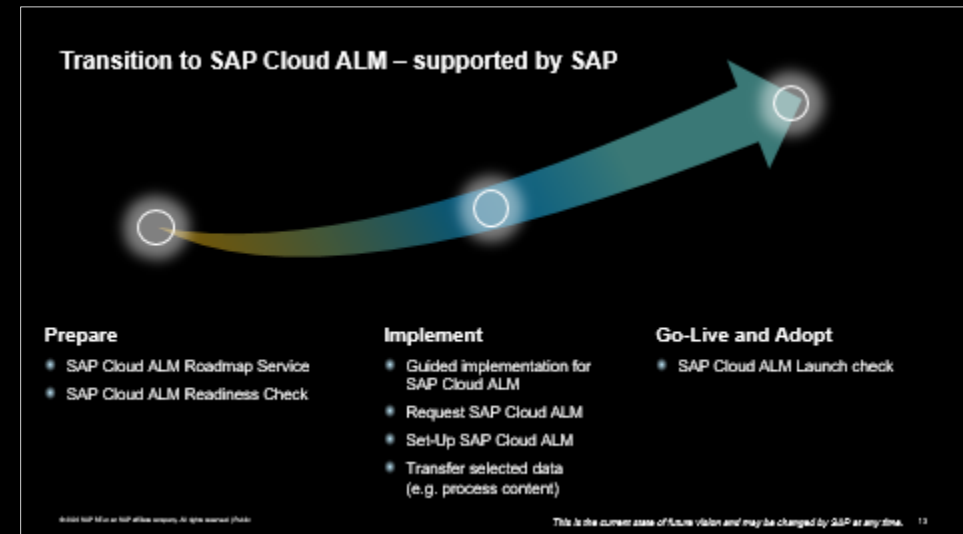
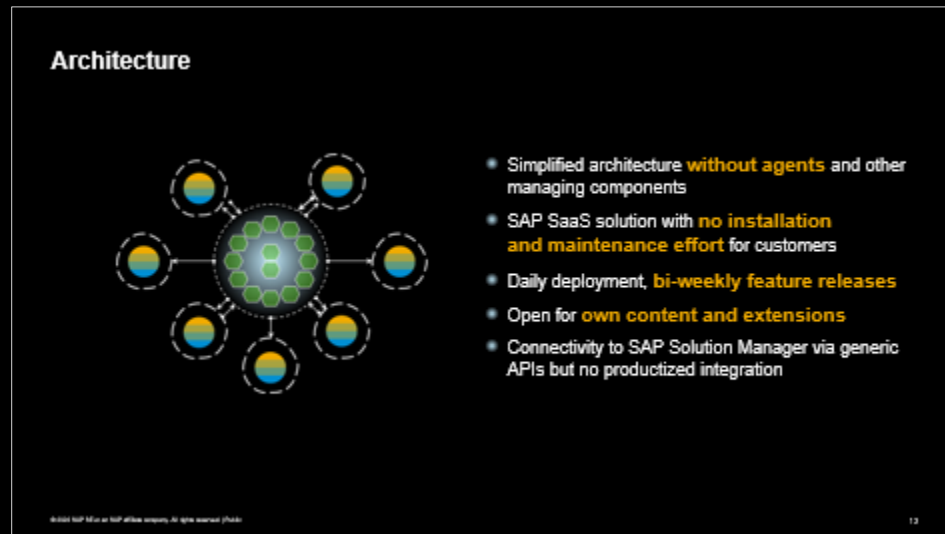
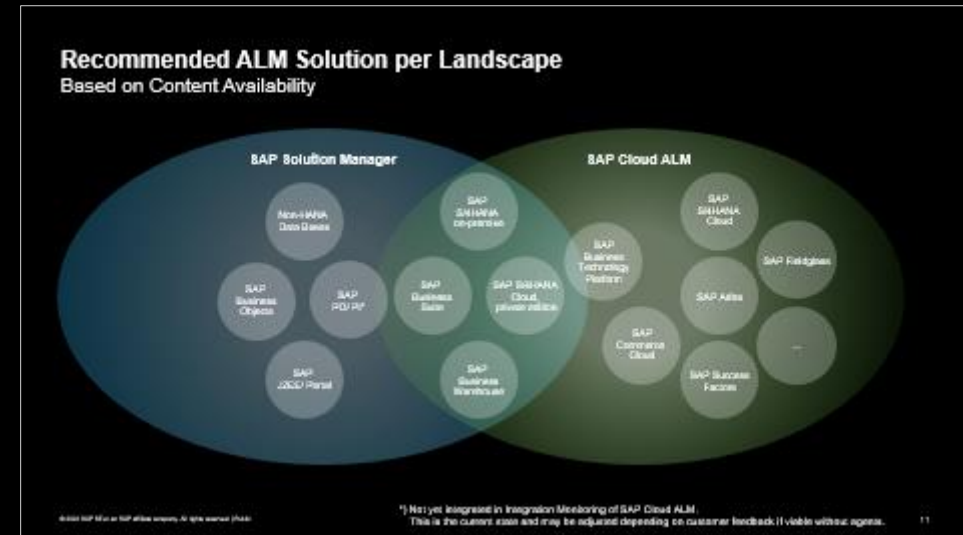
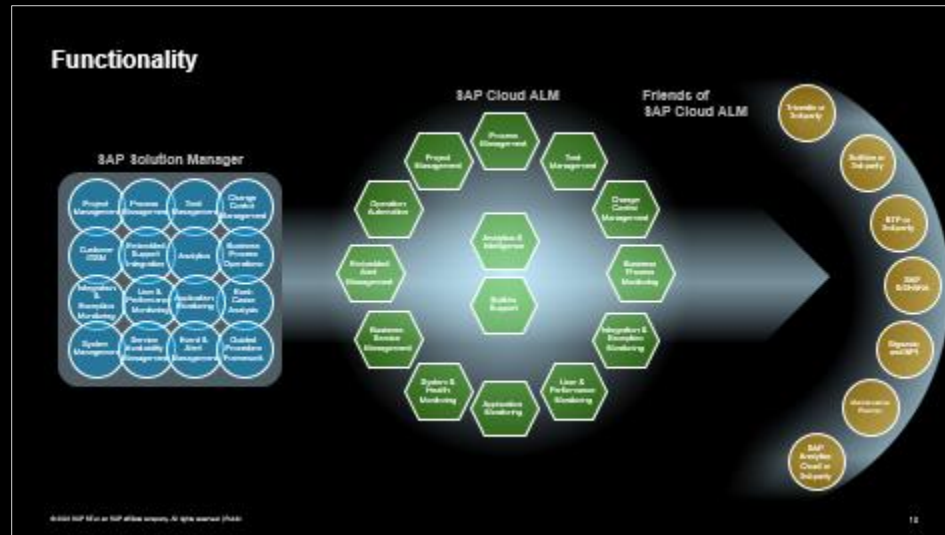
#### SAP Cloud ALM Custom Process

The Custom Process API allows to upload, manipulate, activate SAP Cloud ALM custom solution processes..

Planned Q3/Q4



# Aspects of the transition from SAP Solution Manager to SAP Cloud ALM



# SAP Cloud ALM availability for relevant capabilities in SAP Solution Manager

[Learn More](#)



Available in SAP Cloud ALM	10
On Product Roadmap	18
On Product Vision	12
Available in other SAP Product	5
Not planned in SAP Cloud ALM	5

Implementation Operations

Items (5) [Download](#)

SAP Solution Manager Scenario	SAP Solution Manager Capability	Category	SAP Cloud ALM Scenario	SAP Cloud ALM Capability	Alternative SAP Product	Comments	More details
Project Management	Generic Project Management	Available in SAP Cloud ALM ■ ■ ■ ■ ■ ■ ■ ■ ■ ■	Project Management	Project & Task Management	-	<a href="#">(0)</a>	>
Change Request Management	Digital Signature	On SAP CALM Roadmap ■ ■ ■ ■ ■ ■ ■ ■ ■ ■	Change Management	Feature Transport Management	-	<a href="#">(0)</a>	>
Test Management	Defect Management	On Product Vision ■ ■ ■ ■ ■ ■ ■ ■ ■ ■	Test Management	Not available yet	-	<a href="#">(0)</a>	>
Custom Code Management	Custom Code Library	Available in other SAP Product ■ ■ ■ ■ ■ ■ ■ ■ ■ ■	Not relevant	Not relevant	<a href="#">Custom Code Analytics</a>	<a href="#">(0)</a>	>
Change Request Management	Retrofit	Not planned in SAP Cloud ALM ■ ■ ■ ■ ■ ■ ■ ■ ■ ■	Not relevant	Not relevant	-	<a href="#">(0)</a>	>

Lab Preview

# SAP Cloud ALM availability for relevant capabilities in SAP Solution Manager



Available in SAP Cloud ALM	10
On Product Roadmap	18
On Product Vision	12
Available in other SAP Product	5
Not planned in SAP Cloud ALM	5

Implementation Operations

Items (5) Download

SAP Solution Manager Scenario	SAP Solution Manager Capability	Category	SAP Cloud ALM Scenario	SAP Cloud ALM Capability
Project Management	Generic Project Management	Available in SAP Cloud ALM ■ ■ ■ ■ ■	Project Management	Project & Task Management
Change Request Management	Digital Signature	On SAP CALM Roadmap ■ ■ ■ ■ ■	Change Management	Feature Transport Management
Test Management	Defect Management	On Product Vision ■ ■ ■ ■ ■	Test Management	Not available yet
Custom Code Management	Custom Code Library	Available in other SAP Product ■ ■ ■ ■ ■	Not relevant	Not relevant
Change Request Management	Retrofit	Not planned in SAP Cloud ALM ■ ■ ■ ■ ■	Not relevant	Not relevant

## Equivalent Capabilities in SAP Cloud ALM

Project Management – Generic Project Management

[Details](#) [Product Roadmap](#) [Additional Resources](#) [3rd Party Extensions](#) [Services](#)

With Project Management in SAP Cloud ALM you can manage your project using agile methodologies with Sprints, User Stories and Story Points, consume methodology tasks with accelerators from SAP Activate roadmaps, visualize dependencies in Gantt-Char View, integrate with other project management tools using Open API.  
[More details...](#)

### Product Roadmap

Access the [Roadmap Explorer](#)

### Additional Resources

- Learn more about Project Management in SAP Cloud ALM:
- [Blog Basics of Project Management in SAP Cloud ALM](#)
  - [SAP Cloud ALM for Implementation Expert Portal](#)
- Available transition paths and tools:
- [Transition path and migration for SAP Solution Manager in the SAP Help Portal](#)
  - [Migration tools: Content migration for SAP Cloud ALM](#)

### 3rd Party Extensions

Access the [SAP Store](#) to discover available 3rd Party Extensions

### Services

- The following services and courses are available:
- [EGI for SAP Cloud ALM for Implementation. More details](#)
  - [OpenSAP for SAP Cloud ALM for Implementation. More details](#)



# SAP's ALM Maintenance Strategy

SAP Solution Manager follows the maintenance strategy of the SAP Business Suite. If you need to extend maintenance for SAP Business Suite, extended maintenance for SAP Solution Manager (process management, test suite, change & release management, ITSM) is also included.

SAP Cloud ALM is designed to support ALM for Intelligent, Sustainable Enterprise, including SAP S/4HANA (all deployments).

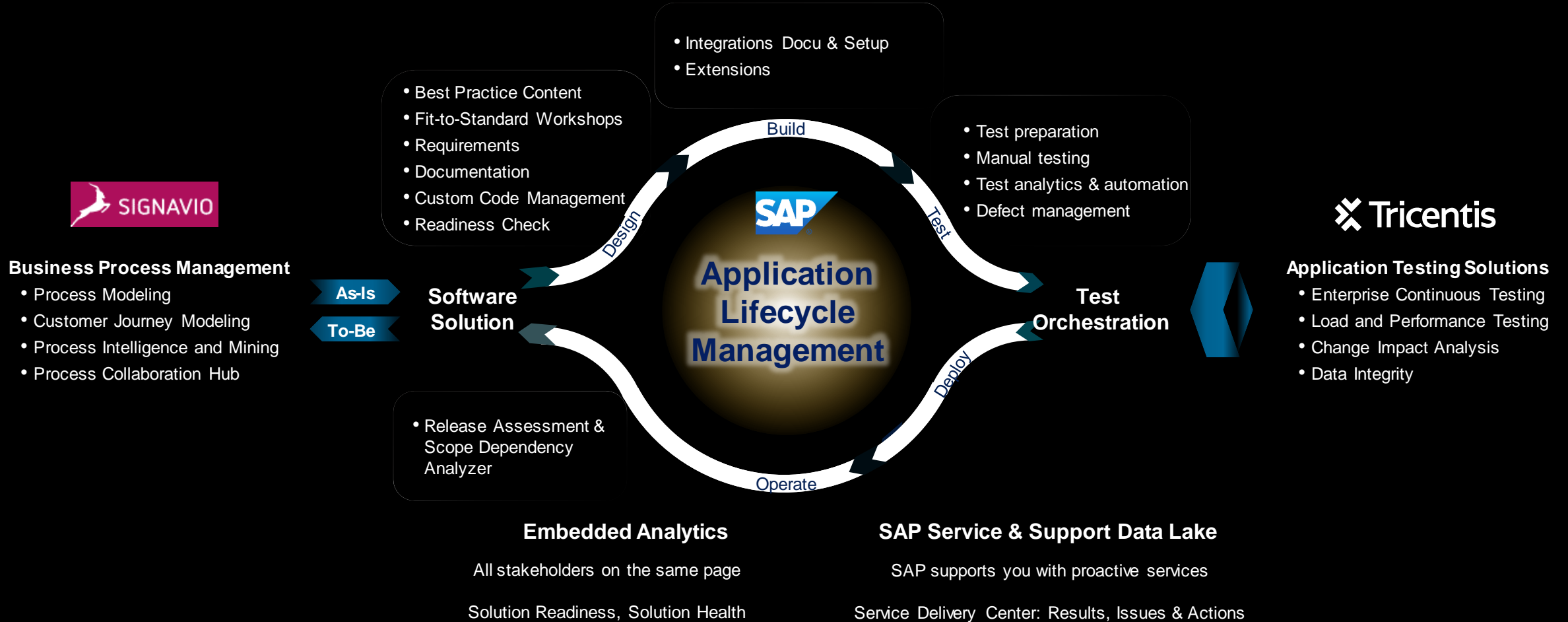
SAP Cloud ALM is attractive for SAP Solution Manager customers: cost of operation and maintenance, functionality, ease of use and adoption, foundational support for today's customer landscape (SAP Business Suite, SAP BW, SAP PI/PO), transition support.

SAP Cloud ALM is the next generation ALM platform for SAP customers. SAP Cloud ALM is an independent new product line and not the successor of SAP Solution Manager.

SAP has not decided about a successor to SAP Solution Manager 7.2. SAP has currently no planning for that. SAP recommends SAP Cloud ALM as go to platform for ALM.

# Business Transformation Suite Wins

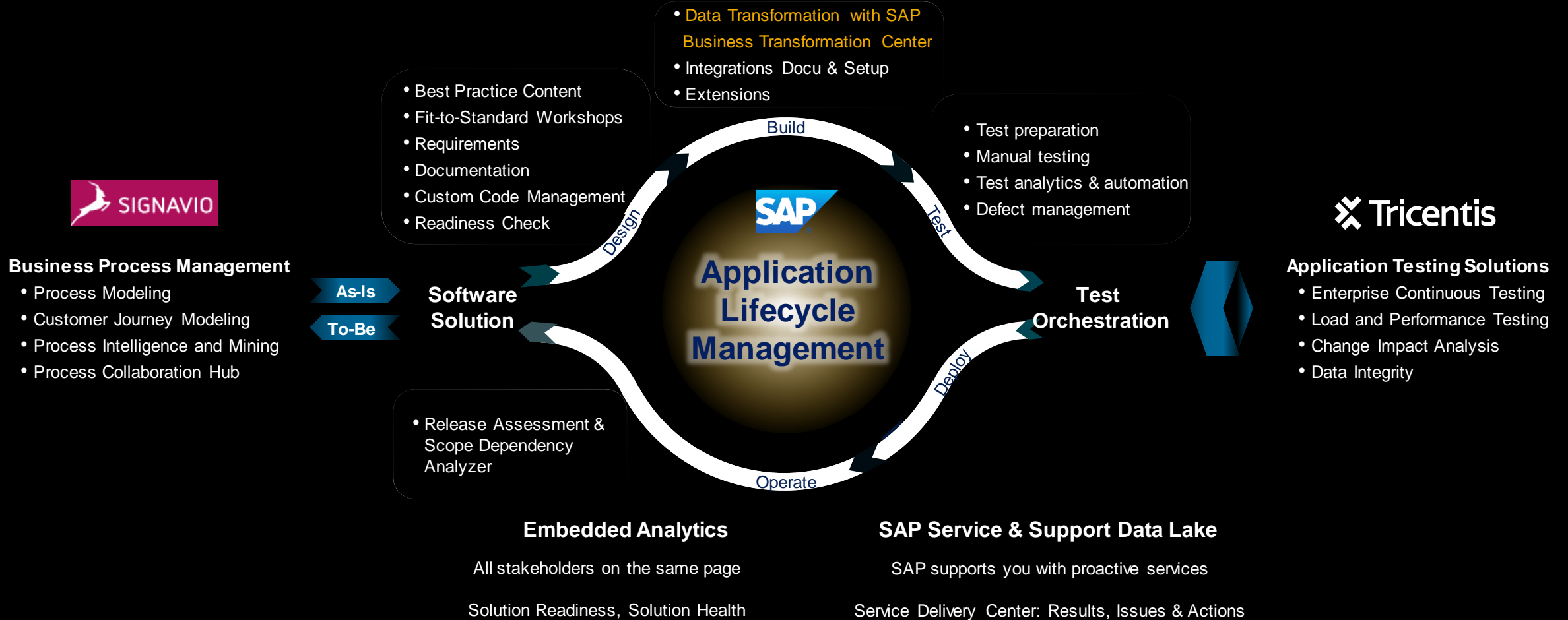
Application Lifecycle Management as integration engine for Business Transformation included in RISE with SAP



**One methodology and tool chain, one process hierarchy, best practices, E2E traceability and proactive support**

# Business Transformation Suite Wins

Application Lifecycle Management as integration engine for Business Transformation included in RISE with SAP



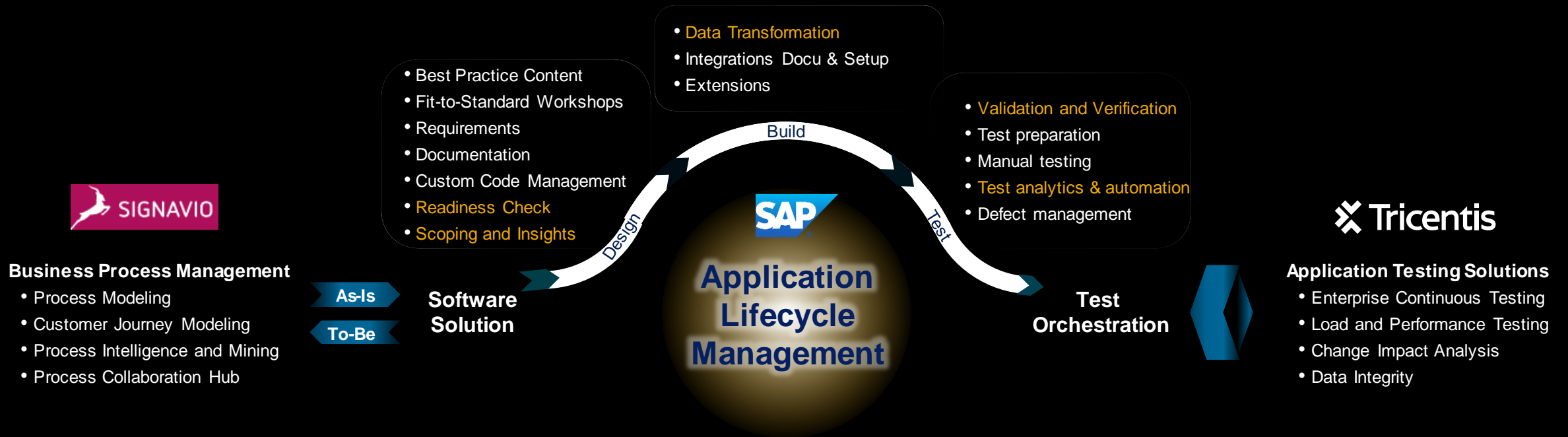
**One methodology and tool chain, one process hierarchy, best practices, E2E traceability and proactive support**

# Business Transformation Suite Wins

Application Lifecycle Management as integration engine for Business Transformation included in RISE with SAP

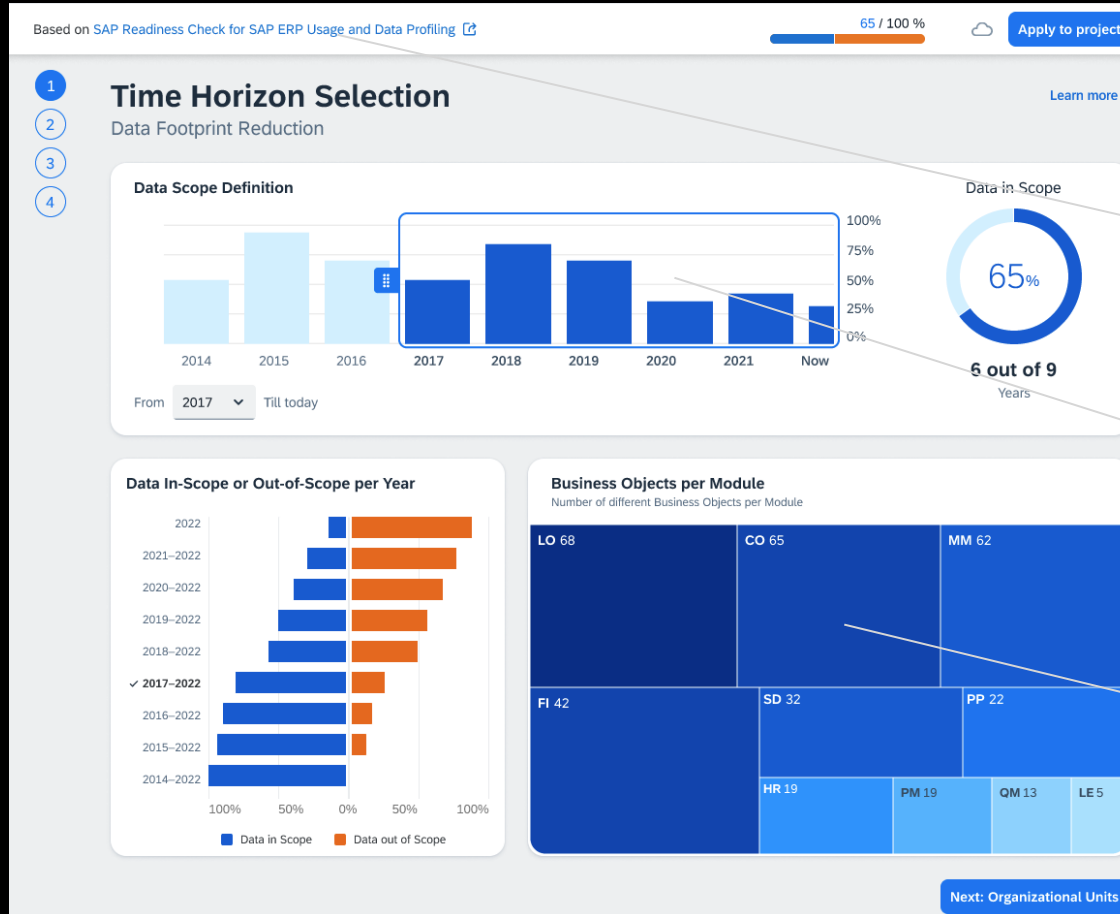
## SAP Business Transformation Center

A Data Driven Transformation Approach



# SAP Business Transformation Center

## Data Driven Approach – Scoping und Insights



Reuse & Integration of existing toolings and data (e.g. Readiness Check)

Educated decisions: Combined data insights & choice

Business object footprint impact



# SAP Business Transformation Center

## Data Driven Approach – Scoping und Insights

Based on SAP Readiness Check for SAP ERP Usage and Data Profiling [🔗](#) 27 / 100 % [Apply to project](#)

### 1 Company Code Selection [Learn more](#)

**Company Code Selection** All (6) In Scope (4) Out of Scope (2)

With Data (5) No Data (1)  [🔍](#) [📄](#) [⚙️](#) [🔼](#) [🔽](#)

Organizational Structure	In Scope	Last Document Date	Data Volume, M	Changed On	Changed By
<b>PremiumTec (1000) Controlling Area</b>					
> PremiumTec GmbH & Co. KG (0001) Company Code · DE	<input checked="" type="checkbox"/>	Jan 15, 2022	2.648 / 3.594	Jan 15, 2022	
> PremiumTec Inc. (0002) Company Code · US	<input checked="" type="checkbox"/>	Jan 15, 2022	2.340 / 3.594	Jan 15, 2022	
> PremiumTec B.V. (0003) Company Code · NL	<input checked="" type="checkbox"/>	Jan 15, 2022	0.560 / 2.593	Jan 15, 2022	SD
> PremiumTec Ltd. (0004) Company Code · GB	<input type="checkbox"/>		0.000 / 0.000	Jan 9, 2022	
> PremiumTec Brasil S/A (0005) Company Code · BR	<input checked="" type="checkbox"/>	Oct 8, 2021	2.648 / 3.594	Jan 9, 2022	CS
> Premium Tec MX S.A. de C.V. (0006) Company Code · MX	<input type="checkbox"/>	Oct 30, 2017	0.000 / 2.593	Jan 9, 2022	SD

Guided Transition Project Flow

Business oriented approach

# SAP Business Transformation Center

## Recommendation and Guidance

**Notifications** ▲ 5 See More (176)

10:24 am, Dec 16, 2021

### Upload Company Code Mapping

The chosen solution pattern requires a provision of a company code mapping value list.

[PR-0128 Global Mapping](#)

[Configurator](#) [Setup](#)

10:24 am, Dec 16, 2021

### New Company Code in Source System

There was a new company code "0010" detected in the source system. Please review company code scoping.

[EX-0132 Scoping](#)

[Configurator](#) [Setup](#)

**Business Objects** All (203) In Scope (66) Out of Scope (137)

Not Defined (203) Comments (9) With Data (104) No Data (28) Search

Module & Object Name	Status	In Scope	Records, M	Jan 15, 2022	Changed On	Changed By
<b>FI – Finance</b>						
▼ <b>Master Data</b>						
Bank	<span style="border: 1px solid gray; padding: 2px;">Not Defined</span>	<input checked="" type="checkbox"/>	2.648 / 3.594		Jan 15, 2022	Olivia Ordenberg
GL Account	<span style="border: 1px solid gray; padding: 2px;">Not Defined</span>	<input checked="" type="checkbox"/>	3.144 / 6.397		Jan 15, 2022	Elliot Doe
SEPA Mandate	<span style="border: 1px solid gray; padding: 2px;">Not Defined</span>	<input type="checkbox"/>			Jan 15, 2022	Olivia Ordenberg
Exchange rate	<span style="border: 1px solid gray; padding: 2px;">Not Defined</span>	<input type="checkbox"/>			Jan 15, 2022	Olivia Ordenberg
Assets	<span style="border: 1px solid gray; padding: 2px;">Not Defined</span>	<input type="checkbox"/>			Jan 15, 2022	Elliot Doe
▼ <b>Transactional data</b>						
Bank account balance	<span style="border: 1px solid gray; padding: 2px;">Not Defined</span>	<input type="checkbox"/>	0.000 / 2.593		Jan 15, 2022	Jan 15, 2022 Elliot Doe
G/L account balance anc	<span style="border: 1px solid gray; padding: 2px;">Not Defined</span>	<input checked="" type="checkbox"/>	2.648 / 3.594		Jan 15, 2022	Jan 15, 2022 Olivia Ordenberg
Historical balance	<span style="border: 1px solid gray; padding: 2px;">Not Defined</span>	<input type="checkbox"/>	2.648 / 3.594		Jan 15, 2022	Jan 15, 2022 Olivia Ordenberg

LO – Logistic

Integrated and event-driven user notifications

Intelligent Guidance with the Option to overwrite (no enforcement)

**Company Code Selection** ✖ 2 suggested [Apply All](#) All (6) In Scope (4) Out of Scope (2)

✖ With Suggestion (2) With Data (5) No Data (1) Search

Organizational Structure	In Scope	Last Document Date	Data Volume, M	Changed On	Changed By
<b>PremiumTec (1000) Controlling Area</b>					
> PremiumTec GmbH & Co. KG (0001) Company Code · DE	<input checked="" type="checkbox"/>	Jan 15, 2022	2.648 / 3.594	Jan 15, 2022	
> PremiumTec Inc. (0002) Company Code · US	<input checked="" type="checkbox"/>	Jan 15, 2022	2.340 / 3.594	Jan 15, 2022	
> PremiumTec B.V. (0003) Company Code · NL	<input checked="" type="checkbox"/>	Jan 15, 2022	0.560 / 2.593	Jan 15, 2022	SD
> PremiumTec Ltd. (0004) Company Code · GB	<input checked="" type="checkbox"/>		0.000 / 0.000	Jan 9, 2022	
> PremiumTec Brasil S/A (0005) Company Code · BR	<input checked="" type="checkbox"/>	Oct 8, 2021	2.648 / 3.594	Jan 9, 2022	CS
> Premium Tec MX S.A. de C.V. (0006) Company Code · MX	<input checked="" type="checkbox"/>	Oct 30, 2017	0.000 / 2.593	Jan 9, 2022	SD

Insight-driven recommendations

# SAP Business Transformation Center

From digital Project Scoping to productive data transformation

The screenshot displays the SAP Business Transformation Center interface. At the top, there are navigation tabs: 'All Tasks (873)', 'My Tasks (6)', 'Timeline', and 'Dashboard'. Below the tabs is a search bar and several filter icons. The main content area is a table titled 'All Tasks (873)' with the following columns: 'Task name', 'Progress Status', 'Start Date', 'Due Date', 'Modified by', 'Modified on', and 'Assigned to'. The table lists various tasks, including 'PR-0000 Prepare' (100% complete), 'PR-0001 Modeling' (100% complete), 'EX-0000 Explore' (100% complete), 'RL-0000 Realize' (34% complete), 'RL-0001 Modeling' (34% complete), 'RL-0002 BO - Material' (0% complete), 'RL-0003 Create Selection Rules' (In Progress), 'RL-0004 Create Transformation Rule' (On Hold), 'RL-0005 Simulate Execution' (Open), 'RL-0006 Run test cycles' (34% complete), 'RL-0007 BO - Material' (0% complete), 'RL-0008 Create Cycle' (In Progress), 'RL-0009 Create Run' (Open), 'RL-0010 Execute Cycle' (Open), 'RL-0011 Validate Cycle' (Open), and 'DP-0000 Deploy' (0% complete). Each task row includes icons for progress, status, and assignment.

Task name	Progress Status	Start Date	Due Date	Modified by	Modified on	Assigned to
> PR-0000 Prepare	✓ 100%	Feb 1, 2022	Feb 1, 2022	Alex Howmart	Dec 21, 2021	D X +3
> PR-0001 Modeling	✓ 100%	Jan 20, 2022	Jan 20, 2022	Alex Howmart	Dec 21, 2021	Developers
> EX-0000 Explore	✓ 100%	Feb 1, 2022	Feb 1, 2022	Alex Howmart	Dec 21, 2021	
▼ RL-0000 Realize	34 of 100%	Feb 1, 2022	Feb 1, 2022	Alex Howmart	Dec 21, 2021	
> RL-0001 Modeling	34 of 100%	Jan 20, 2022	Jan 20, 2022	Alex Howmart	Dec 21, 2021	Developers
> RL-0002 BO - Material		Dec 28, 2022	Jan 20, 2022	Alex Howmart	Dec 21, 2021	
RL-0003 Create Selection Rules	In Progress	Dec 28, 2022	Jan 20, 2022	Alex Howmart	Dec 21, 2021	Elliot Doe
RL-0004 Create Transformation Rule	On Hold	Dec 28, 2022	Jan 20, 2022	Alex Howmart	Dec 21, 2021	Elliot Doe
RL-0005 Simulate Execution	Open	Dec 28, 2022	Jan 20, 2022	Alex Howmart	Dec 21, 2021	Elliot Doe
> RL-0006 Run test cycles	34 of 100%	Jan 20, 2022	Jan 20, 2022	Alex Howmart	Dec 21, 2021	Executors
▼ RL-0007 BO - Material		Dec 28, 2022	Jan 20, 2022	Alex Howmart	Dec 21, 2021	
RL-0008 Create Cycle	In Progress	Dec 7, 2022	Dec 28, 2022	Olivia Ordenberg	Dec 21, 2021	Elliot Doe
RL-0009 Create Run	Open	Dec 28, 2022	Jan 20, 2022	Alex Howmart	Dec 21, 2021	Assign
RL-0010 Execute Cycle	Open	Dec 28, 2022	Jan 20, 2022	Alex Howmart	Dec 21, 2021	Assign
RL-0011 Validate Cycle	Open	Dec 28, 2022	Jan 20, 2022	Alex Howmart	Dec 21, 2021	Assign
> DP-0000 Deploy	0 of 100%	Feb 1, 2022	Feb 1, 2022	Alex Howmart	Dec 21, 2021	D X +3

One realtime platform as single source of truth

Digital Blueprint as documentation for audit and product support

Automation of labour intense activities

# SAP Business Transformation Center

Partner plays

## Guided data migration and transformation

- Streamlined and guided data migration and transformation experience
- One solution - methodology, process, content
- Provided by SAP Support, available for RISE

## Accelerate time-to-market

- Speed up migration and transformation projects
- Reduce planning and execution complexity
- Improve quality by integrated testing
- Ease traceability and governance

## Improve competitiveness

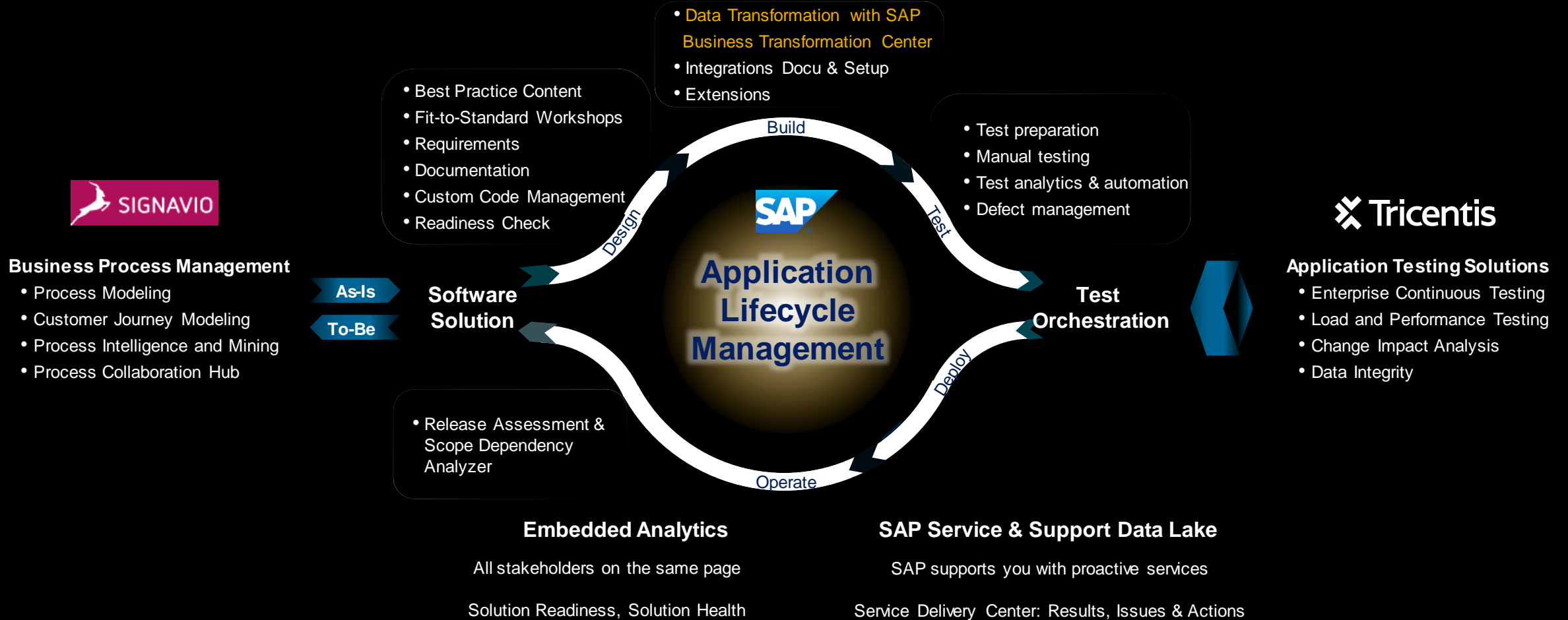
- Lower cost of implementation: time & scalability through qualified consultants
- Higher reliability by solution provisioning by SAP
- Included in SAP support offering

## Business growth opportunity

- Active market development through partner transformation factories
- Complementary partner packages on top
- Focus on adoption including mid market

# Business Transformation Suite Wins

Application Lifecycle Management as integration engine for Business Transformation included in RISE with SAP



**One methodology and tool chain, one process hierarchy, best practices, E2E traceability and proactive support**

# Where do we want to go

The Next Inflection Point | Transforming the way we interact with our customers in the cloud

Be **THE guardian**  
of customer business value  
and happiness for life,  
where our passionate team  
turns every customer  
into a fierce promoter of SAP.

Functional Gaps



Functional Expansions  
via Products

Customer-initiated  
Communication



Continuous Dialogue

Multiple Options



Guided / Prescriptive Methods

Mostly Responsive



Predictive / Self-healing

# SAP Cloud ALM Knowledge Resources

## Get Started

### Open SAP Trainings for SAP Cloud ALM

- [SAP Cloud ALM - in a Nutshell](#)  
Self-paced course, duration 1 week
- [Accelerate Cloud Implementations with SAP Cloud ALM](#)  
Self-paced course, duration 4 weeks
- [Implementing SAP S/4HANA Cloud with SAP Central Business Configuration](#)  
Self-paced course, duration 7 weeks
- [Operating Cloud Centric Solutions with SAP Cloud ALM](#)  
Self-paced course, duration 3 weeks

## Demo Options

- Recorded Demos in ALM Media Center
- Live Demos
  - Internet Demo Systems (public)
  - Private Demo Systems (private)

## Learn how to

### How-to SAP Cloud ALM videos

- [Order and set-up SAP Cloud ALM](#)
- [Learn how to run implementation projects](#)
- [See how to configure and use operations](#)

## Stay connected

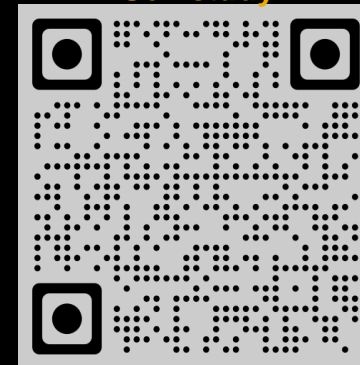
### Learn more

- Join our regular *What's New* webinars on the [SAP Learning Hub](#)

### Stay up-to-date

- [SAP Road Map Explorer](#)
- [What's New](#) section in the SAP Help Portal
- Join our monthly [SAP Cloud ALM Expert Community Call](#)

Self-study



# Thank you.

Contact information:

Stefanie Kuebler, Marc Thier

THE BEST RUN 