



SAP Community Call for ALM – APJ edition

June 27, 2023

SAP ALM Go-to-market APJ, SAP Labs India

PUBLIC

Introduction



SAP Community Call for ALM – APJ edition : Agenda for **June 27, 2023**

Welcome and Introduction

ALM Community News

News from SAP Product Support

Focus topic: **Transition to SAP Cloud ALM**

Interactive Poll

Upcoming Events and Webinars

Q&A



Please use the Q&A tool in Zoom to ask your questions also during the presentation!

Speakers



Suhaib Mohammed



Sonal Kumar

The Application Lifecycle Management Product Portfolio of SAP





ALM Community News



ALM Community News

Product Information

 **Moritz Gysler** 
June 21, 2023 | 4 minute read

Tag Search in SAP Cloud ALM

👍 0 🗨️ 1 🌐 6

[Follow](#)

[Liked](#)

[RSS Feed](#)

In this blog post I'd like to introduce the **new capability to search for tagged objects across projects** in SAP Cloud ALM. By utilizing the search you can find different object types like User Stories and Test Cases which are tagged with the same keyword. The **result list is cross-project** and thus you can get a kind of an **overall work list**.

The blog post is divided into following chapters:

- Prerequisites
- Find your tagged objects
- Work with the result list
- Wrap-Up


Prerequisites

You have used the tag management to have an easy way to find different object types based on a certain keyword / phrase. For further reference you can check the blog posts [New: Tags in SAP Cloud ALM for Implementation](#) by Tonja Kehrer or [Tag Management for Test Cases in SAP Cloud ALM](#) by Reiner Markheiser.

Find your tagged objects

You can use the search field in the Launchpad Shell Bar or all other applications to start a search. Type in a specific tag label as search term and hit the magnifying lens icon to start the search.



The tag label it is the best way to utilize the search but you can enter every search term you want and you get suggestions while typing.



Search All for Tag Label

[Tag Search in SAP Cloud ALM](#)

Technical Articles

 **Xavier DUPEYRAT** 
May 26, 2023 | 1 minute read

SAP ALM API & Integration: Events to External Chat Systems

👍 0 🗨️ 3 🌐 307

[Follow](#)

[Liked](#)

[RSS Feed](#)

In this Series of blog post, we cover different use-cases of **integration** between **SAP Cloud ALM** and external ALM services.

All Integration scenario of SAP Cloud ALM are based on the public APIs listed in the [SAP API Business Hub](#).

Objectives

You want to forward SAP Cloud ALM **monitoring events** to external chat tools to create messages in chat channels.

Prerequisites


Any chat tool can be connected to SAP Cloud ALM using the provided External API Integration capabilities.

Depending on the environment the following integration types have to be distinguished. Check the following [documentation](#) for more information.

- **Integration with Microsoft Teams**
 - SAP Cloud ALM provides a ready-to-use integration with Microsoft Teams including a pre-defined API mapping.
- **Simple Integration with Other Chat Tools**
 - The chat tool must:
 - Expose REST APIs for creating chat messages.
 - Expose an API endpoint accessible from your SAP Cloud ALM BTP sub-account.
 - Support one of the following Authentication protocol described in the following [documentation](#).
 - Support a compatible payload for REST operations. The list of supported mapping rules can be found in the [help.sap.com](#).
- **Complex Integration with Other Chat Tools**
 - If the chat tools do not match the requirements for a simple integration, an integration can still be achieved by using SAP Integration Suite or third-party API Integration HUB platform.

[SAP ALM API & Integration: Events to External Chat Systems](#)

Technical Articles

 **Alexandre Sabatier**
June 1, 2023 | 3 minute read

Integrate SAP Cloud ALM with Slack

👍 0 🗨️ 4 🌐 405

[Follow](#)

[Liked](#)

[RSS Feed](#)

One of the best things about SAP Cloud ALM is how open and flexible the solution is. You can easily integrate it with standard mappings, such as ServiceNow or Microsoft Teams, but also build your own. With the recent release of External Chat Systems events ([see this blog post](#)), customers and partners can now extend SAP Cloud ALM to various chat solutions. The present post will highlight how to do so with Slack, arguably one of the most popular products on the market today.

Event Actions

"Events" are essentially triggers. Whenever SAP Cloud ALM detects an anomaly, such as a failed call on CPI, a high number of dumps in S/4HANA or an unusual peak in late vendor payments on the business side, you have the choice to setup a follow-up action.

The easiest actions would be the automated creation of an alert in CALM itself – the "Create Alert" action – or send an email to a distribution list – the "Send Email To" action. However, most customers already use corporate ticketing solutions, in which case a ticket can be automatically generated in ServiceNow – the "Create Ticket" action.

Another type of action is the "Send Chat Message". This is most likely for events that are critical and require immediate attention, in which case you may want to not only create a ticket but also ping the responsible team on MS Teams, Slack or else.

Slack Webhooks

First you need to create a Slack App. This will allow you to define a custom webhook for SAP Cloud ALM to send data to. The official Slack documentation details the steps very well: <https://api.slack.com/messaging/webhooks>.

After creating the app, navigate to **Incoming Webhooks** and activate the feature. Then click **Add New Webhook to Workspace** to generate the target URL (starting with <https://hooks.slack.com/services/>).

You will need to associate the webhook with a **single channel**. For testing purpose, I'd recommend you create a separate one until you feel comfortable going live with the integration.

Settings

Basic Information
Collaborators
Secret Mode

Activate Incoming Webhooks

Incoming webhooks are a simple way to post messages from external sources into Slack. They make use of normal HTTP requests with a JSON payload, which includes the [JSON API](#).

[Integrate SAP Cloud ALM with Slack](#)

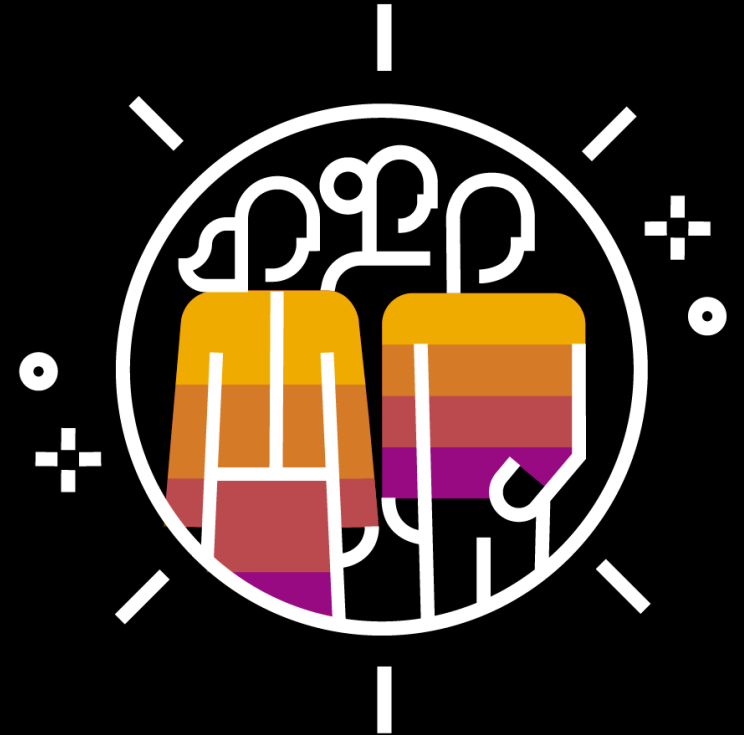
Community News

1. [Join the ALM Community](#)

Follow the tags

2. [SAP Cloud ALM](#), [SAP Solution Manager](#), [SAP Focused Run](#)

3. Ask your questions to peers and experts!

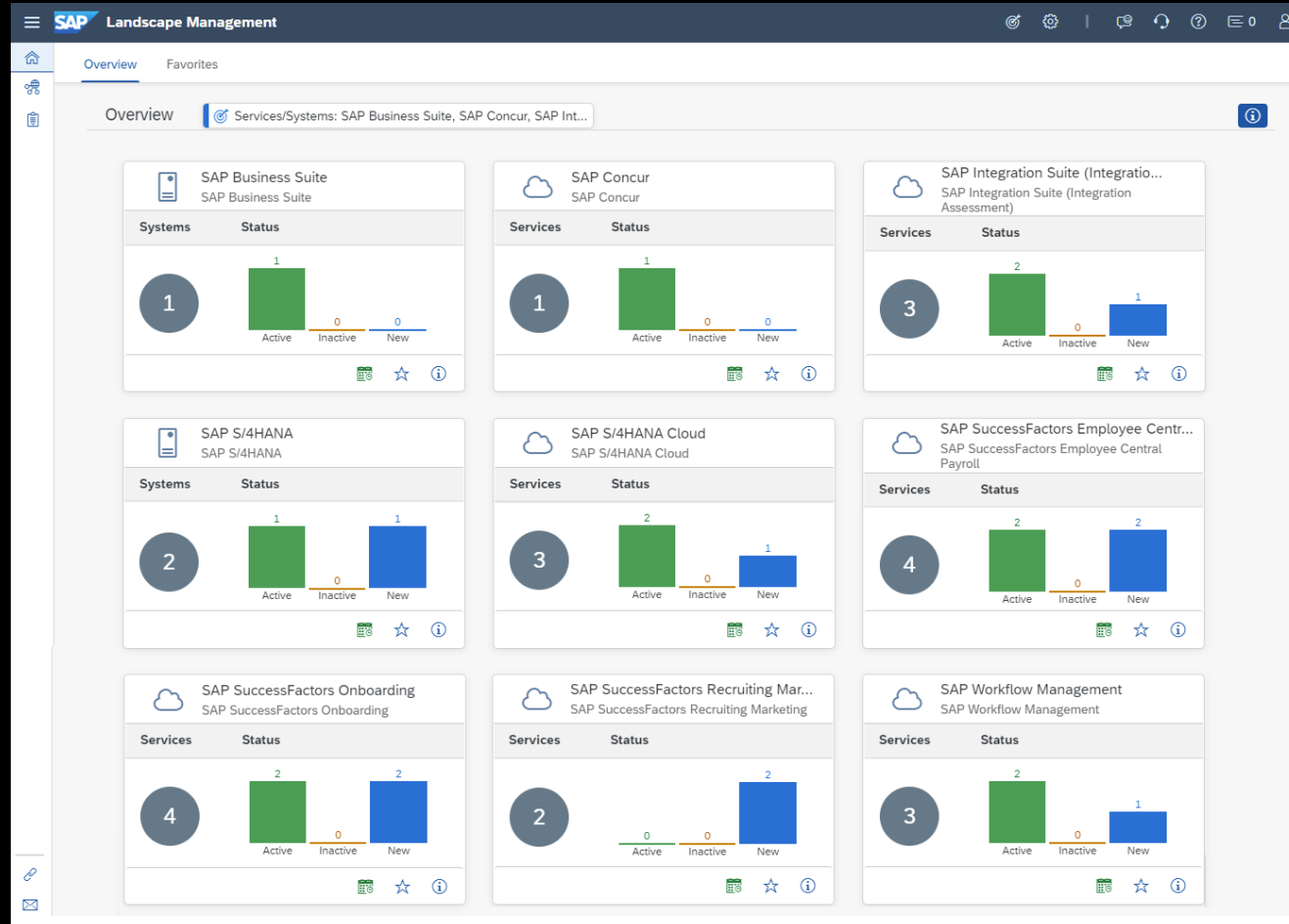


News from SAP Product Support



New UI Update for the Landscape Management Overview:

You can now find all service types that you're managing in SAP Cloud ALM on the new Overview page



New UI Update for the Landscape Management Overview:

To simplify your experience, services and systems are now listed on the same page, under Services & Systems.

The screenshot shows the SAP Landscape Management interface. The header includes the SAP logo and 'Landscape Management'. The main title is 'Services & Systems'. Below the title is a breadcrumb trail: 'Home / SAP Business Suite, SAP Integration Suite (API Management), SAP Integration Suite (Cloud Integration), SAP S/4HANA, SAP S/4HANA Cloud'. The main content area is titled 'Services (160/160)' and features a 'Live Search' input field. To the right of the search field are icons for 'Global Search', 'Add', a dropdown arrow, a filter icon, a sort icon, a list icon, and a refresh icon. The table below has the following columns: Status, Name, Service Type, Customer Name, Role, System Number, and Data Center. The table contains 9 rows of data, each representing a different service instance with its respective status and details.

Status	Name	Service Type	Customer Name	Role	System Number	Data Center
Active	[Redacted]	SAP S/4HANA Cloud	[Redacted]	Development	[Redacted]	Germany: Frankfurt
Active	[Redacted]	SAP S/4HANA	[Redacted]	Test	[Redacted]	Netherlands: Amsterdam
Inactive	[Redacted]	SAP Business Suite	[Redacted]	Production	[Redacted]	Germany: Frankfurt
Active	[Redacted]	SAP S/4HANA Cloud	[Redacted]	Test	[Redacted]	Netherlands: Amsterdam
Active	[Redacted]	SAP Integration Suite	[Redacted]	Production	[Redacted]	Germany: Frankfurt
New	[Redacted]	SAP Integration Suite (Cloud Integration)	[Redacted]	Test	[Redacted]	Netherlands: Amsterdam
Active	[Redacted]	SAP Integration Suite (API Management)	[Redacted]	Production	[Redacted]	Germany: Frankfurt
New	[Redacted]	SAP S/4HANA Cloud	[Redacted]	Test	[Redacted]	Germany: Frankfurt
Active	[Redacted]	SAP S/4HANA	[Redacted]	Test	[Redacted]	Germany: Frankfurt

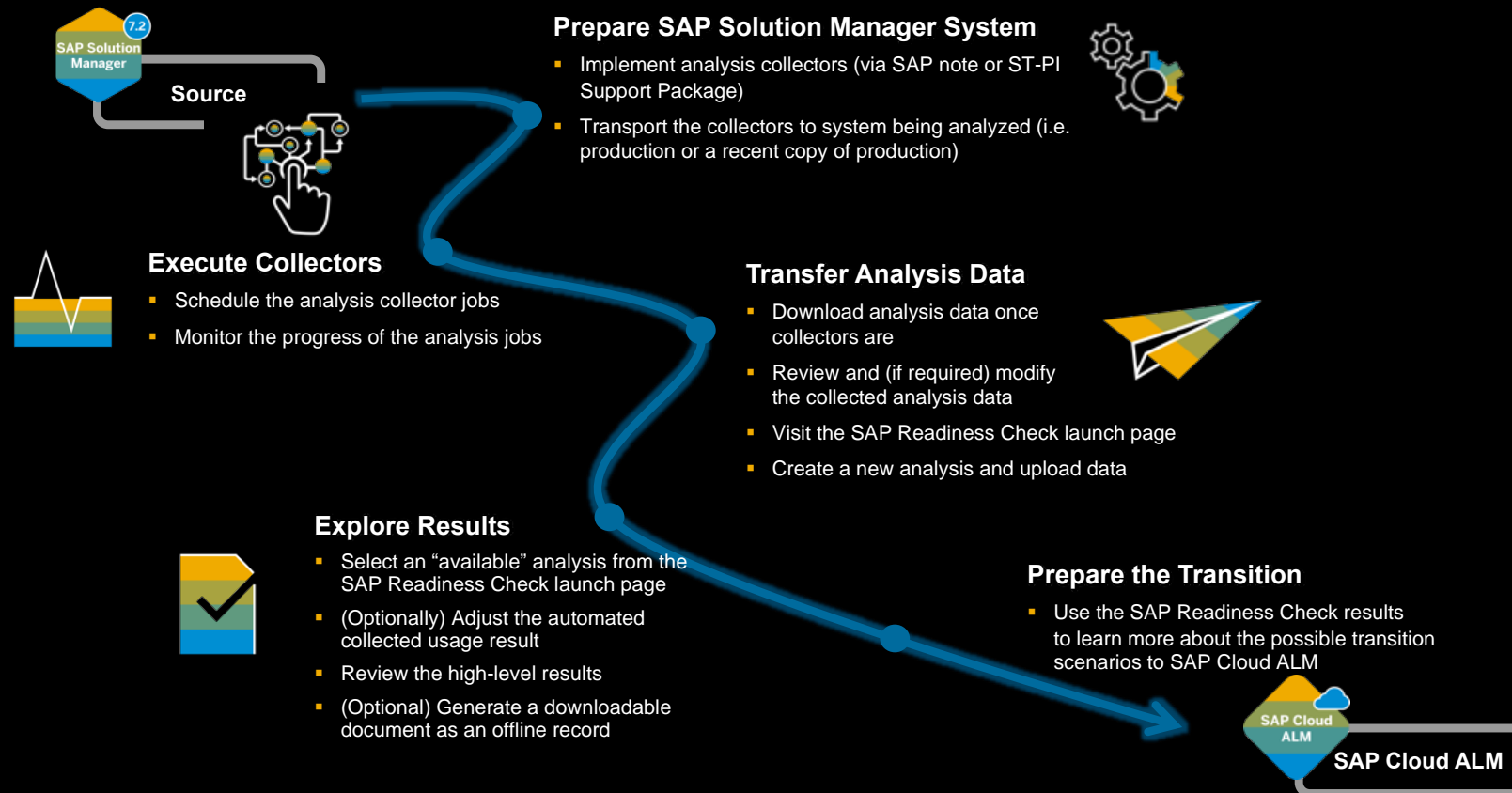
Focus Topic: SAP Readiness Check for SAP Cloud ALM



SAP Readiness Check for SAP Cloud ALM...

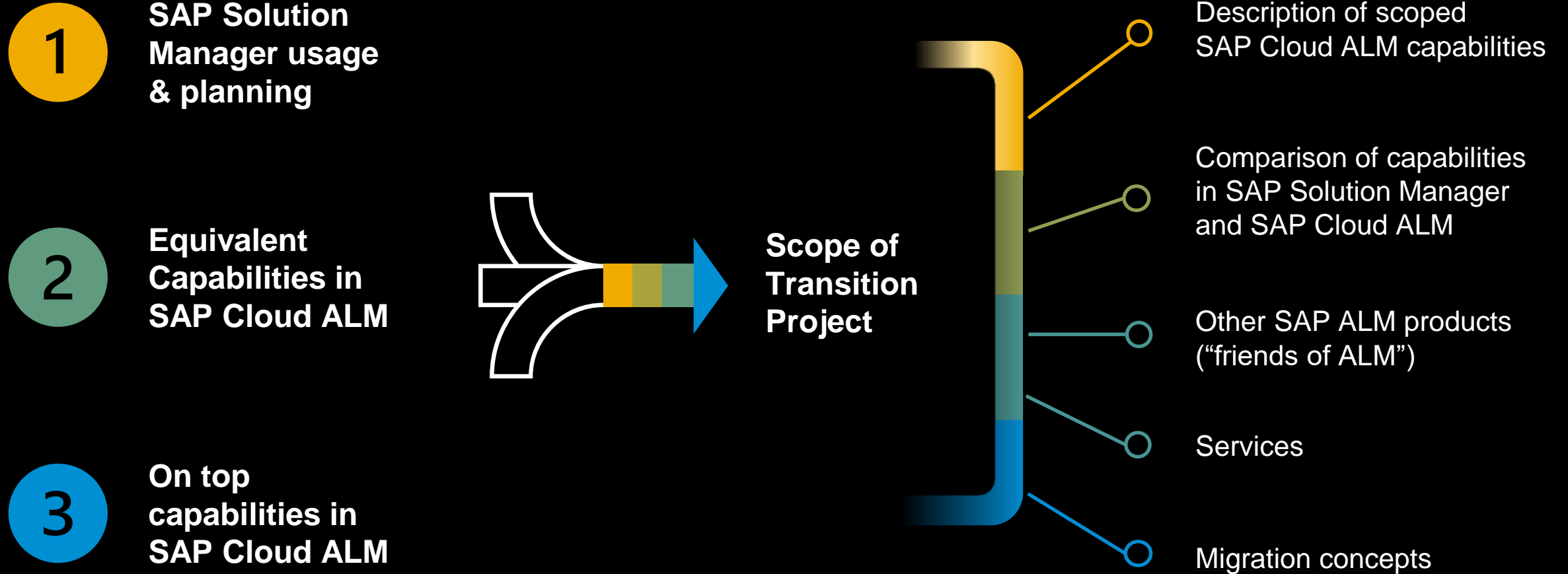
Objectives

Provide a cloud self service to support SAP Solution Manager customers in planning and scoping the transition from SAP Solution Manager to SAP Cloud ALM.

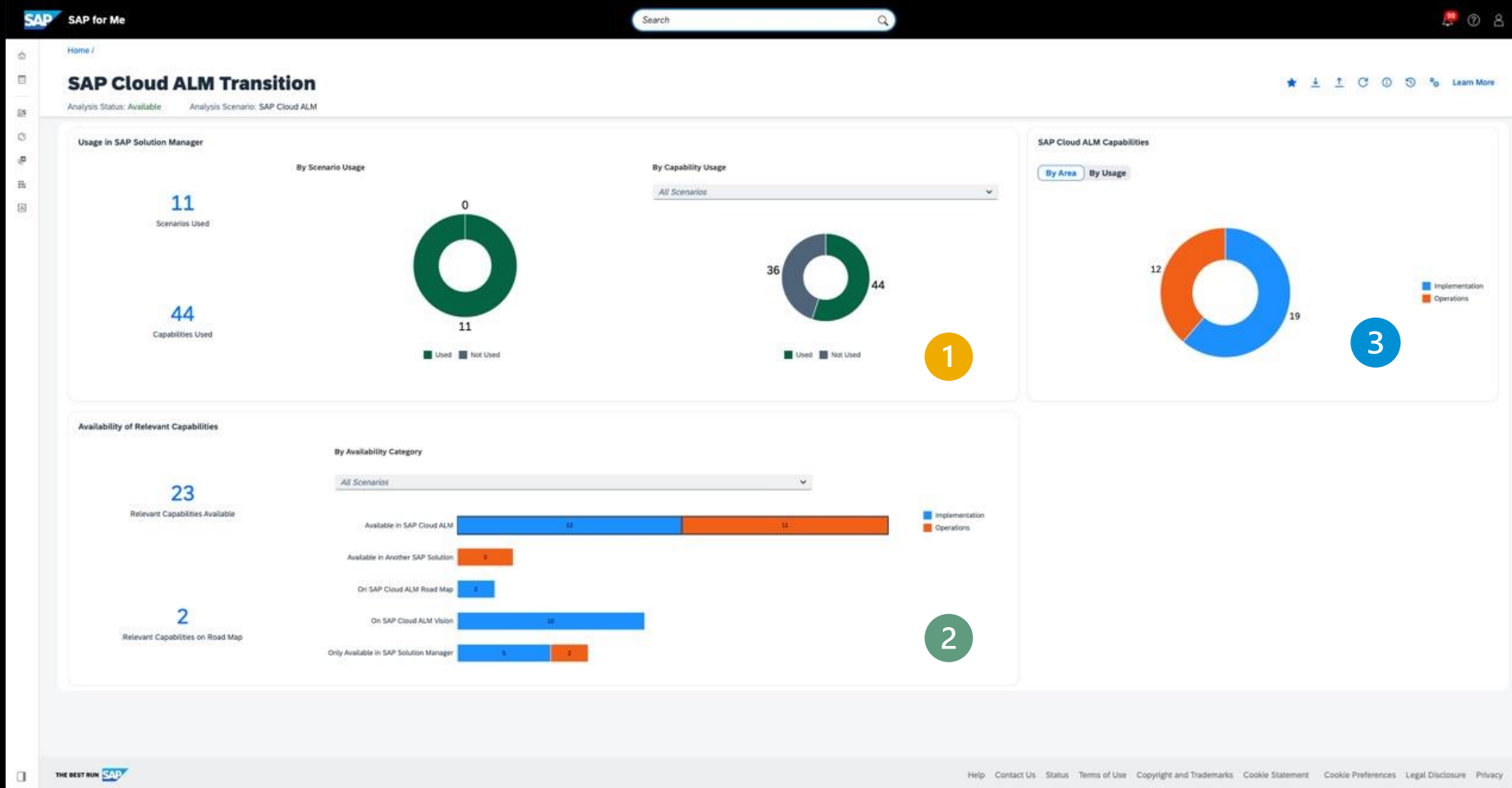


Planning a Transition Project

SAP Readiness Check for SAP Cloud ALM



Summary Dashboard



1 SAP Solution Manager usage & planning

2 Equivalent Capabilities in SAP Cloud ALM

3 Relevant on top capabilities in SAP Cloud ALM

Transition to SAP Cloud ALM: Transition Center in the SAP Support Portal



Transition Center in the SAP Support Portal

Your one-stop spot for all the information around the transition to SAP Cloud ALM!

- General information
- Functional comparison and transition guidance
- Transition recommendations and strategy
- Additional resources, videos and documents

Transition Center

The screenshot shows the SAP Support Portal interface for the 'Transition to SAP Cloud ALM' page. The page header includes the SAP logo and navigation links like 'My Support', 'Products', 'Tools', 'Maintenance', 'Offerings & Programs', and 'ALM'. The breadcrumb trail reads 'SAP Support Portal Home / Application Lifecycle Management / SAP Cloud ALM'. The main title is 'Transition to SAP Cloud ALM', with sub-navigation for 'Strategy Overview', 'Examples', 'Transition Support', and 'Resources'. The main content area features a large heading 'Transition to SAP Cloud ALM' and a sub-heading 'Overview'. The text explains that SAP Solution Manager is in mainstream maintenance until the end of 2027, and SAP Cloud ALM is the Go-to ALM platform for all SAP customers. It provides a one-stop-shop for information and resources for the transition. A video player is embedded, showing a presentation titled 'SAP ALM Summit EMEA 2022 Day... Best Know: SAP Solution Manager Maintenance Strategy and Transition to SAP Cloud ALM' by Marc Thier and Benjamin Schneider. The video player includes a play button and the SAP logo. To the right of the video, there are four bullet points with checkmarks, highlighting key benefits and transition details. At the bottom, a summary statement reads: 'In a nutshell: SAP Cloud ALM is the Go-to ALM platform for all SAP customers.'

SAP Support My Support Products Tools Maintenance Offerings & Programs ALM

SAP Support Portal Home / Application Lifecycle Management / SAP Cloud ALM

Transition to SAP Cloud ALM

Strategy Overview Examples Transition Support Resources

Transition to SAP Cloud ALM

SAP Solution Manager is in mainstream maintenance until the end of 2027. SAP Cloud ALM is the Go-to ALM platform for all SAP customers. SAP recommends to complete the transition to SAP Cloud ALM before this date.

SAP supports our customers with this transition! This page serves as a one-stop-shop for information about and resources for the transition from SAP Solution Manager to SAP Cloud ALM.

You can already move to SAP Cloud ALM for operations and service. Move to SAP Cloud ALM for implementation at your own pace, once the required functionality is ready for you.

There is enough time to prepare and execute this transition. Start now!

Overview

- ✓ SAP Cloud ALM delivers ALM for the Intelligent, Sustainable Enterprise, while offering foundational support for today's customer landscapes.
- ✓ SAP Cloud ALM comes with lower cost of operation and maintenance, is easy to adopt and use, while providing innovative functionality.
- ✓ SAP Solution Manager is in mainstream maintenance until the end of 2027. SAP recommends to complete the transition to SAP Cloud ALM before this date.
- ✓ You can add SAP Focused Run to address advanced operations needs and to manage a significant on-premise footprint.

In a nutshell: SAP Cloud ALM is the Go-to ALM platform for all SAP customers.

Live Demo: Transition Center in the SAP Support Portal

Poll



Upcoming Events



ALM Events: Save the date!

Find all ALM Events here:
<https://support.sap.com/alm-events>

What's New in SAP Cloud ALM Q2/2023: July 26 & 27 ([register here](#))

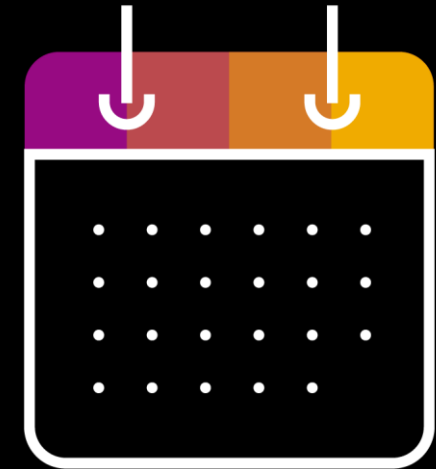
SAP Community Call for SAP Cloud ALM Experts: July 5 ([register here](#))

SAP ALM Summits 2023

- SAP ALM Summit APJ: July 25 - 27 ([register here](#))
- SAP ALM Summit EMEA: October 10 – 13 ([register here](#))

ASUG Events 2023

- ASUG Tech Connect North America: November (date TBD) ([details](#))



SAP ALM Summit APJ 2023

Energize your ALM transformation!

Dates

25th - 27th July 2023

Location

Bengaluru, India

Contact information:

sap.almsummit.apj@sap.com



Stay Updated: ALM Newsletter

Stay updated about the latest news in
Application Lifecycle Management!

Register now for our monthly ALM
newsletter here:

[Register here](#)



Mark your calendar!

The next SAP Community Call for ALM – APJ edition will take place on

August 22, 10 am IST / 12:30 pm SGT.

The focus topic of this call will be “**Business Transformation Suite: SAP Signavio**”

Reminder: **Re-Register yourself** [here](#) to receive e-mail invites for future calls!

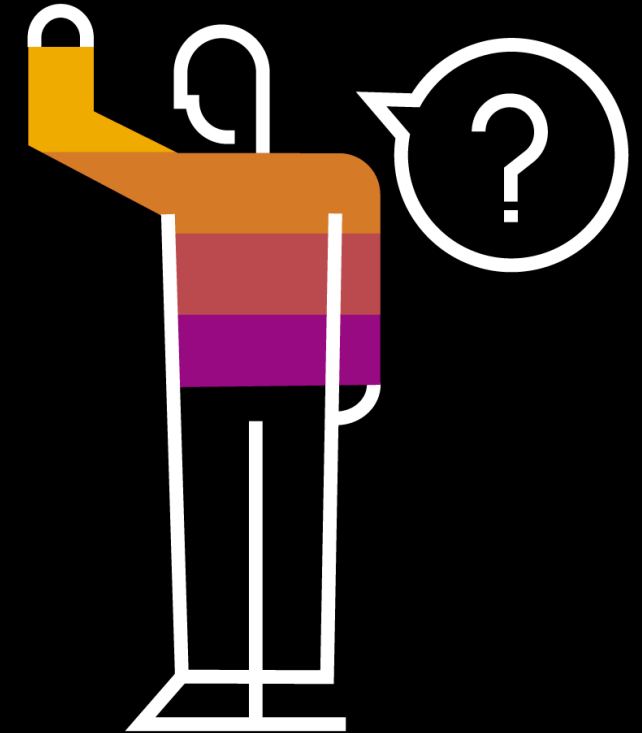
Q&A



Ask you questions here!

Please ask your questions!

Use the Q&A panel in the Zoom webinar to ask your questions.



Thank you.

Contact information:

Suhaib Mohammed, SAP Labs India
sap_alm_apj@sap.com