

SAP Community Call

For SAP Cloud ALM Experts

SAP SE
October 2022

PUBLIC

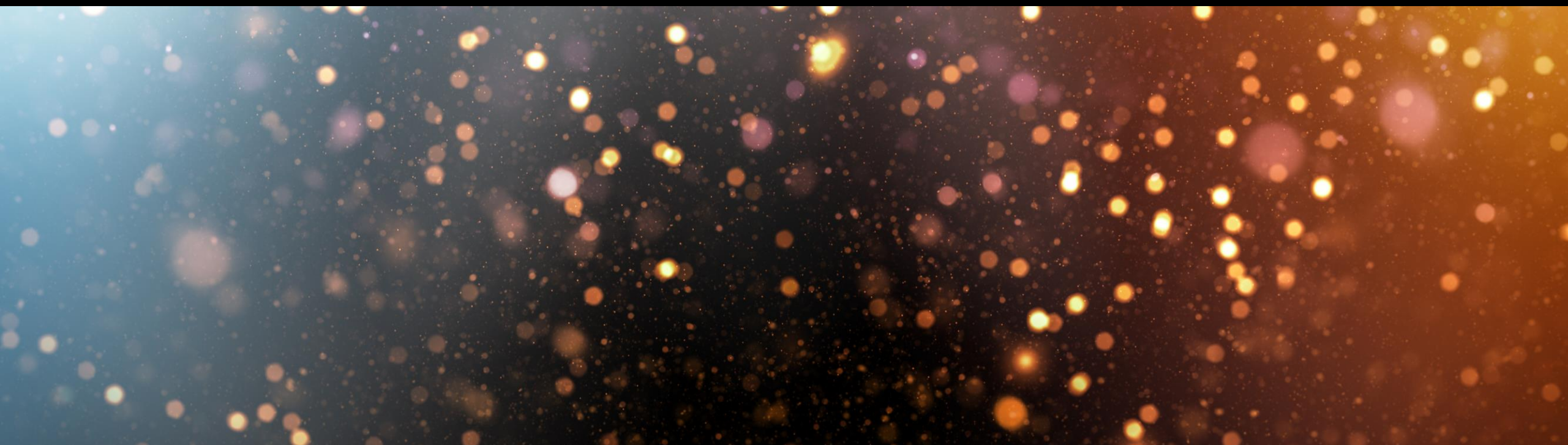
Disclaimer

The information in this presentation is confidential and proprietary to SAP and may not be disclosed without the permission of SAP. Except for your obligation to protect confidential information, this presentation is not subject to your license agreement or any other service or subscription agreement with SAP. SAP has no obligation to pursue any course of business outlined in this presentation or any related document, or to develop or release any functionality mentioned therein.

This presentation, or any related document and SAP's strategy and possible future developments, products and or platforms directions and functionality are all subject to change and may be changed by SAP at any time for any reason without notice. The information in this presentation is not a commitment, promise or legal obligation to deliver any material, code or functionality. This presentation is provided without a warranty of any kind, either express or implied, including but not limited to, the implied warranties of merchantability, fitness for a particular purpose, or non-infringement. This presentation is for informational purposes and may not be incorporated into a contract. SAP assumes no responsibility for errors or omissions in this presentation, except if such damages were caused by SAP's intentional or gross negligence.

All forward-looking statements are subject to various risks and uncertainties that could cause actual results to differ materially from expectations. Readers are cautioned not to place undue reliance on these forward-looking statements, which speak only as of their dates, and they should not be relied upon in making purchasing decisions.

Welcome



SAP Community Call for SAP Cloud ALM Experts | Agenda for **October 5, 2022**

Focus topic: **SAP Cloud ALM for Operations**

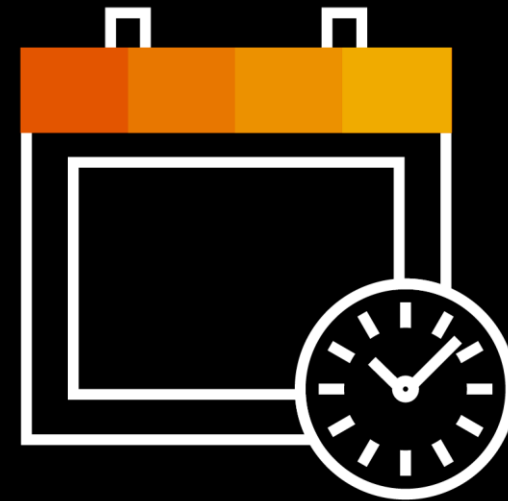
Welcome & about this call

Synthetic User Monitoring

We ask, you answer | Menti poll

Additional Information

You ask, we answer | Q&A



Speakers



Tonja Kehrer



Christophe Garcia



Tim Steuer



Vital Anderhub

About this Call

WHY Build up expert knowledge, share experiences, ask questions

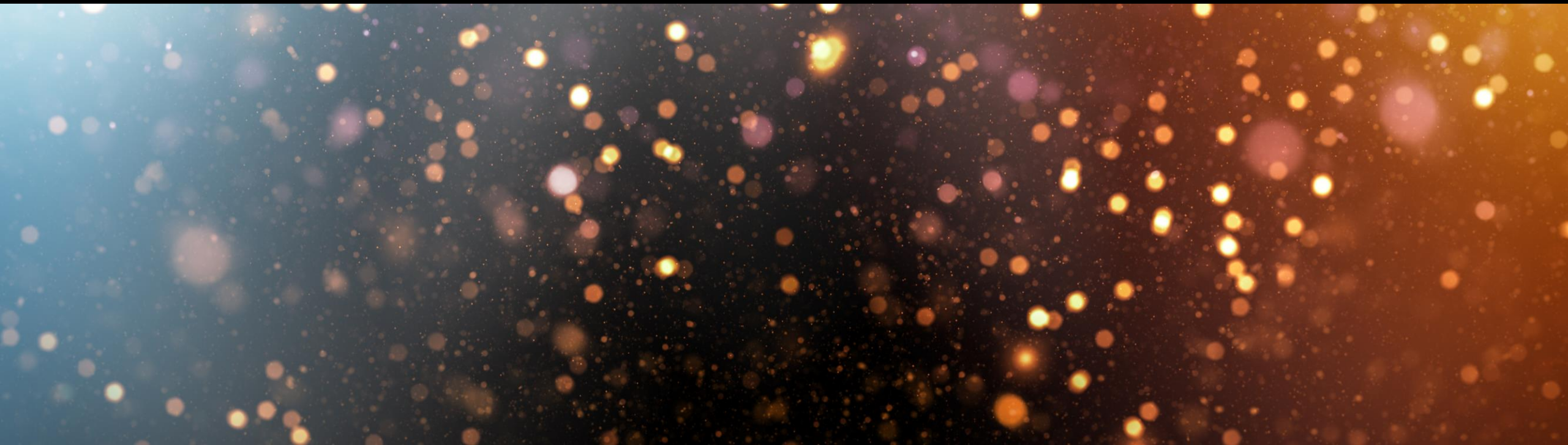
WHEN Monthly webinar series about SAP Cloud ALM

WHAT Concepts, live demos, alternating focus on implementation and operations

WHO Beginners, Experts and anyone interested in SAP Cloud ALM



Synthetic User Monitoring



Synthetic User Monitoring

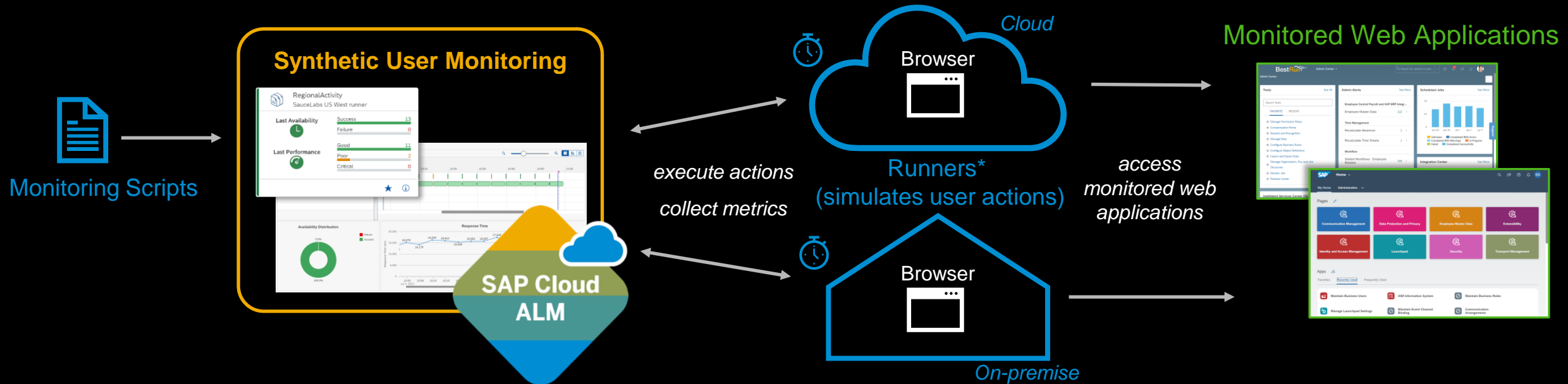
Scope

SAP Cloud ALM Synthetic User Monitoring
is a **24/7 Monitoring solution** to
detect Performance and Availability issues
of **Web Applications** from a
Client-side perspective



Synthetic User Monitoring

Monitor Performance and Availability of web applications from user perspective



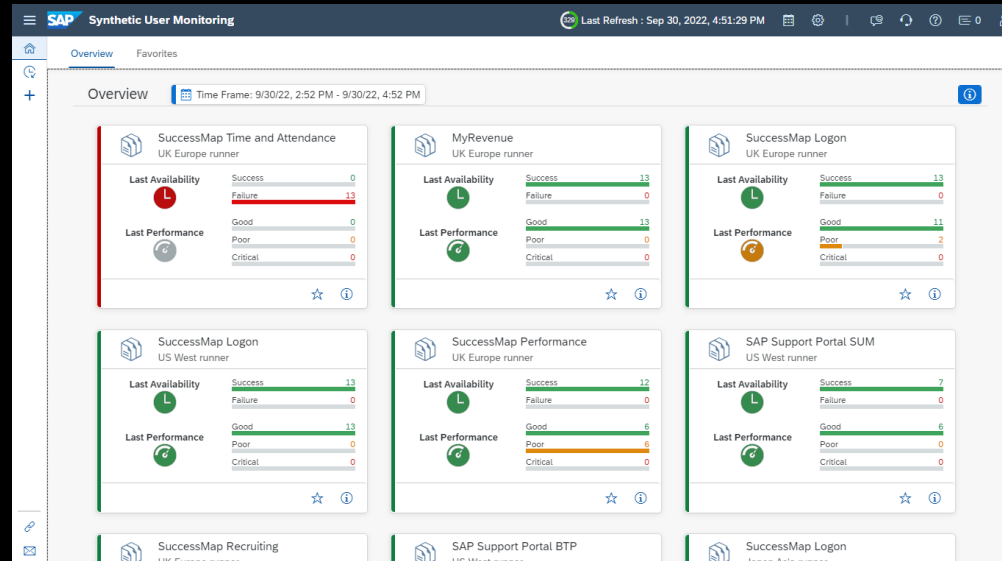
- Monitoring based on custom **Selenium IDE** scripts → supports most of the web applications.
- Regularly executed on **Selenium remote WebDriver infrastructures** (W3C standard).
- **Proactive detection**: 24/7 monitoring enables you detect performance and availability issues early, potentially before the end-users face them.
- **Comparable metrics**: monitoring relies on the **same scenarios being re-executed**. This allows you to **monitor the evolution** of the performance and availability.

Synthetic User Monitoring

How does it look like?



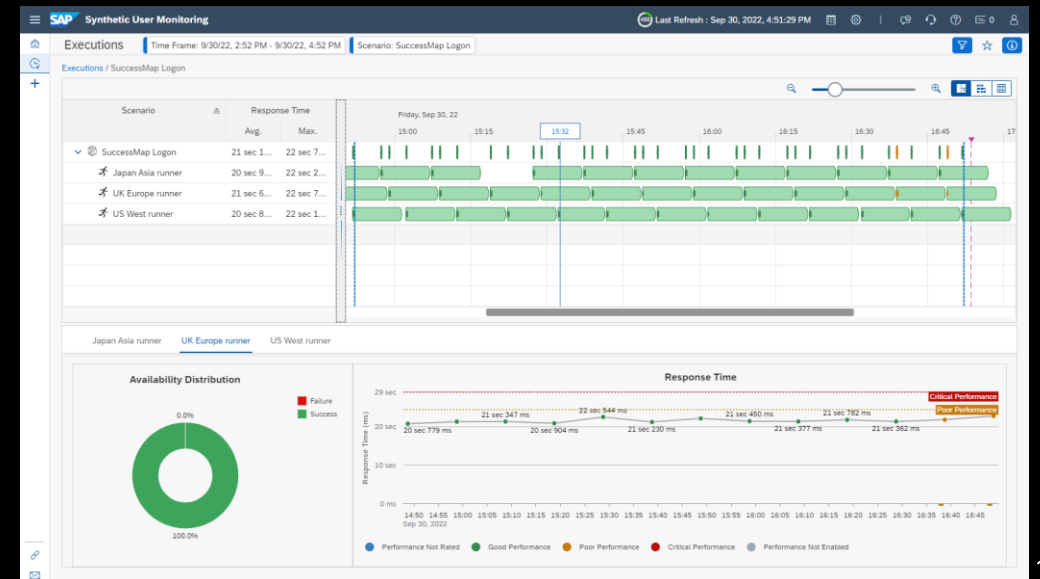
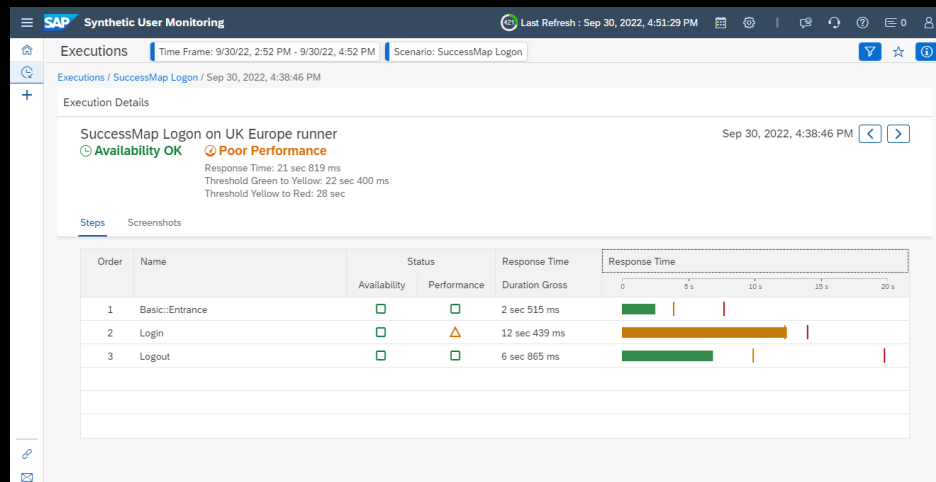
Overview



Scenario executions

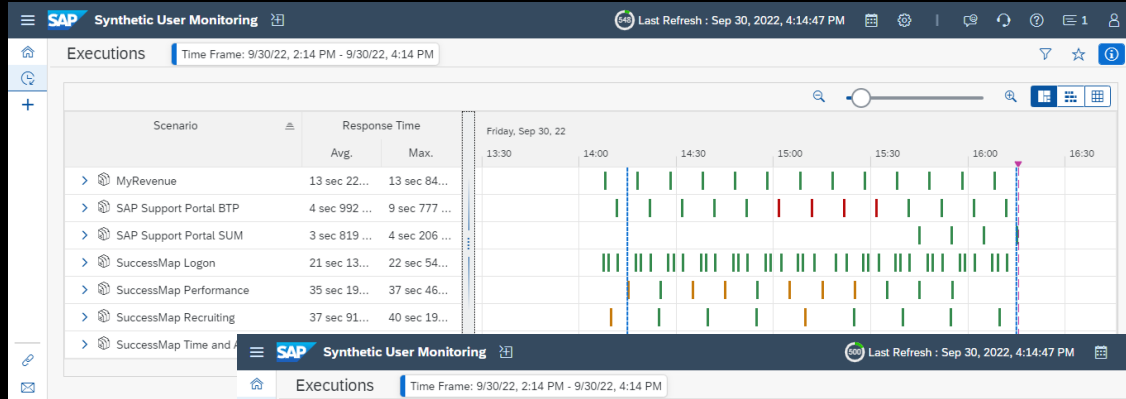


Execution details

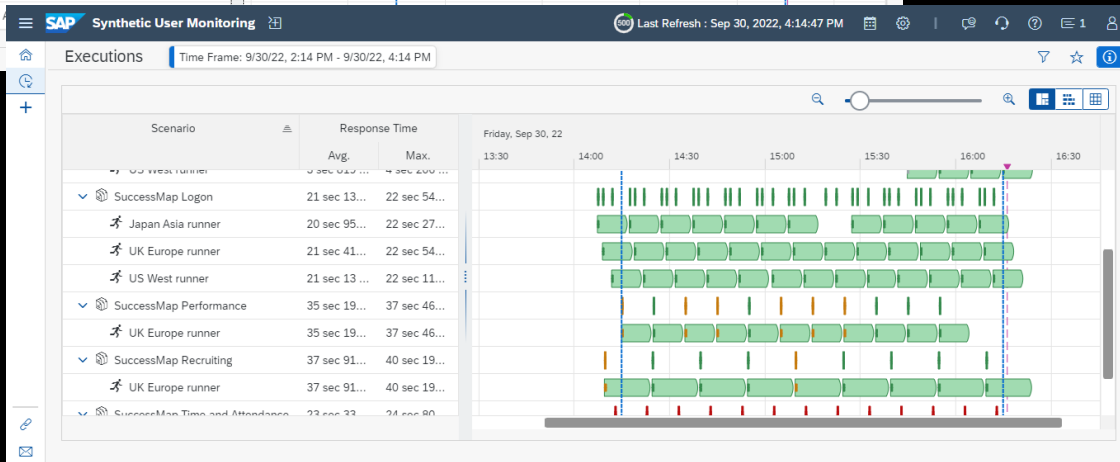


Synthetic User Monitoring

How does it look like?

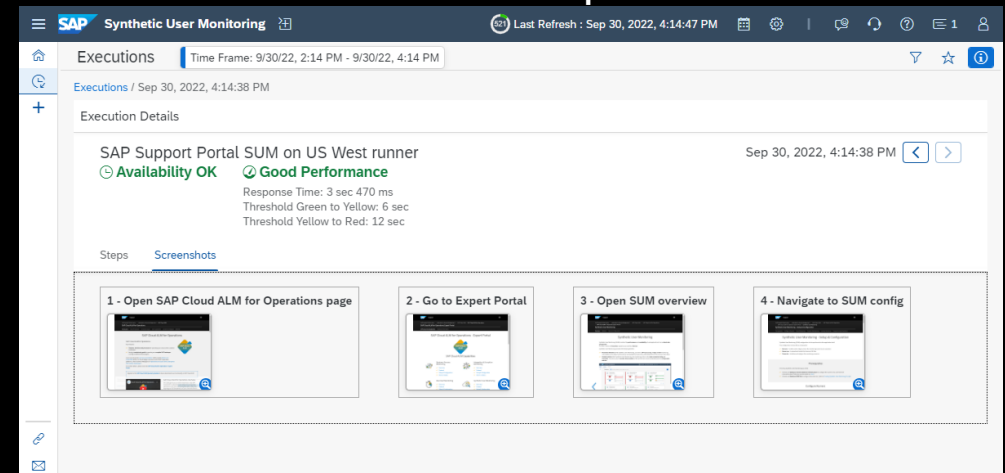


All executions



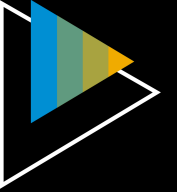
All executions expanded

Captured screenshots



Synthetic User Monitoring

Tell me more about Scenarios and Selenium



Selenium IDE scripts

- A **Selenium IDE (SIDE) script** describes a series of actions (commands) to perform on the browser.
- **Selenium IDE** is an open source tool installed as a plugin in a browser. It offers **recording and replay functions**, as well as an editor to create Selenium IDE (SIDE) scripts.
- You can **annotate** Selenium IDE (SIDE) scripts to **enhance the behavior** of you scenario and introduce Synthetic User Monitoring functionalities like **define steps, variables, set secure content**, and so on.

Resources

- Selenium IDE scripts are represented as **Resources** when uploaded in Synthetic User Monitoring. One resource may contain several scripts.
- Synthetic User Monitoring will **interpret** those Selenium IDE scripts and users can **create Scenarios** out of it.

Scenarios

- A **Scenario** is a combination of a **Resource script** (content) and **Runners** (runtime infrastructures).
- We **measure availability and performance** of a scenario (global or at step level).
- **Performance Thresholds** are defined either at **Scenario** or **Step** levels.
- Thresholds can **automatically be set on first execution**.

Synthetic User Monitoring

Tell me more about Runners

Runners

- A **Runner** can be any **infrastructure/component compatible with Selenium WebDriver** (W3C standard).
- A **Runner** is accessible through an HTTPS URL.
- SAP Cloud ALM does not provide this service.

Examples of deployment

- On premise
 - Standalone Selenium (free)
 - Selenium Grid (free, scalable)
- Cloud
 - Customer owned Selenium standalone or grid hosted in a Cloud environment
 - Consume Selenium services offered by 3rd party providers

Synthetic User Monitoring

What runner deployment shall I use?

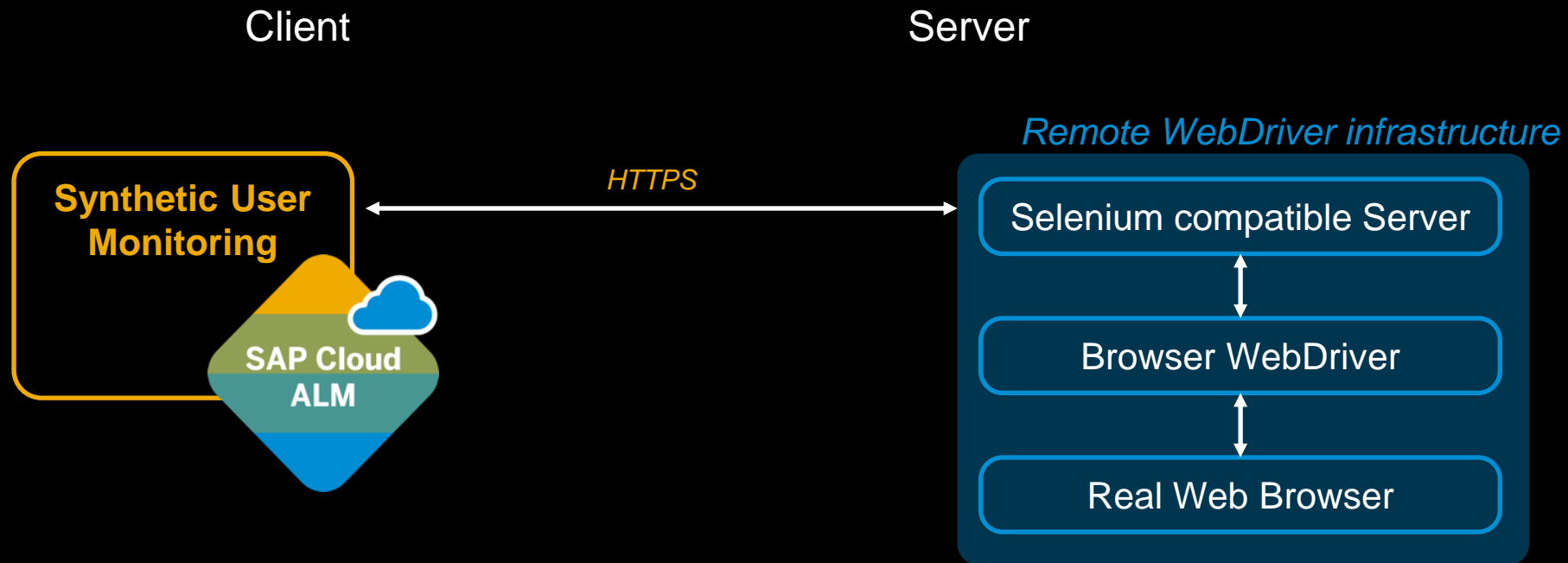
The choice depends on multiple factors like your monitored landscape, infrastructure or subscriptions you may already have in your company environment.

Here are examples of possible options:

		Usually owned, installed and operated by Customer		Owned, installed and operated by 3 rd party provider
Runner		Local / on premise e.g. Selenium Docker or Grid	In a Cloud Service Provider e.g. Selenium Docker	3 rd party Selenium Service Provider
Monitored Application	Runner			
On premise application (private)		❓ only valid option	❓	❓
On premise application visible from internet		❓	❓	❓
Cloud Application		❓	❓	❓

Synthetic User Monitoring

More about remote WebDriver infrastructure



The server listens to the browser actions sent by the client and transfers them to the Web Browser through the Browser WebDriver

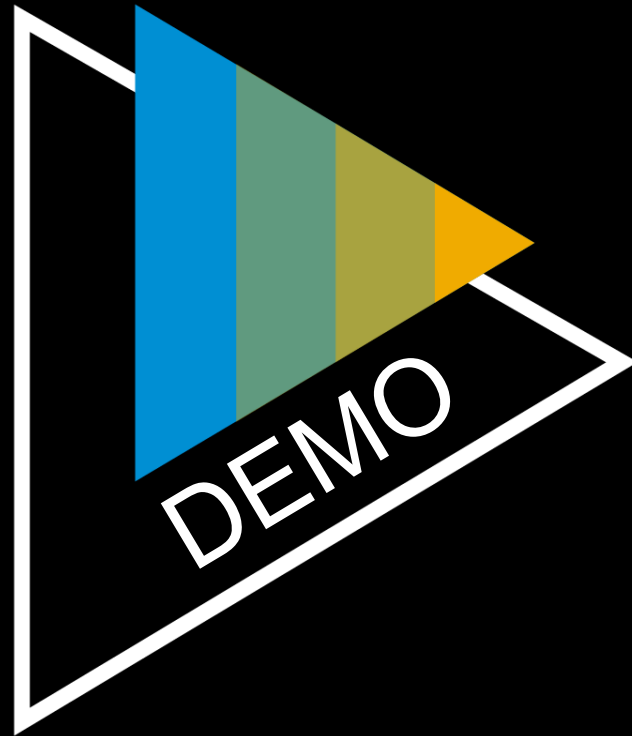
Synthetic User Monitoring

Choose a remote WebDriver infrastructure

- Via a 3rd party service provider
 - This includes the hosting of the infrastructure.
 - Generally provides:
 - Support for different browsers (Chrome, Edge, ...),
 - Parallel executions,
 - Multiple locations, ...
- By deploying an “all-in-one” packages (e.g. a docker image)
 - You are in charge of the hosting (i.e. you decide where to deploy the package: cloud, on-premise).
 - Some packages also support multiple browsers and parallel executions.
- Deployed from custom-assembled elements: Selenium compatible Server, Web Browser, WebDriver
 - You are in charge of the hosting
 - Web Browsers and WebDrivers are executables provided by the browser vendors.
 - Ready to use server exists (Selenium standalone server)
 - Servers also provide support for parallel executions (a.k.a. Grid)

Synthetic User Monitoring

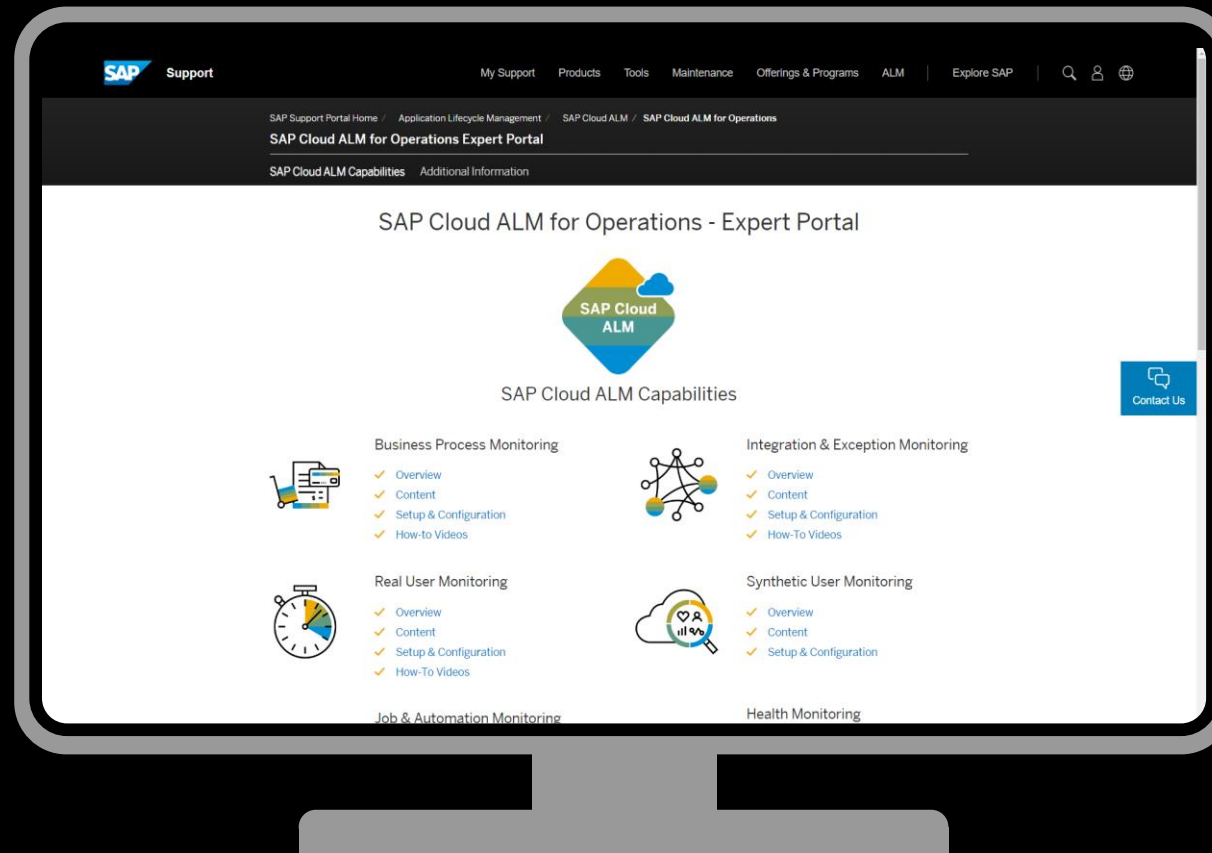
Demo



Synthetic User Monitoring

Additional information

- SAP Cloud ALM for Operations – Expert Portal
(<https://support.sap.com/en/alm/sap-cloud-alm/operations/expert-portal.html>)



Poll



We ask, you answer!

Go to www.menti.com

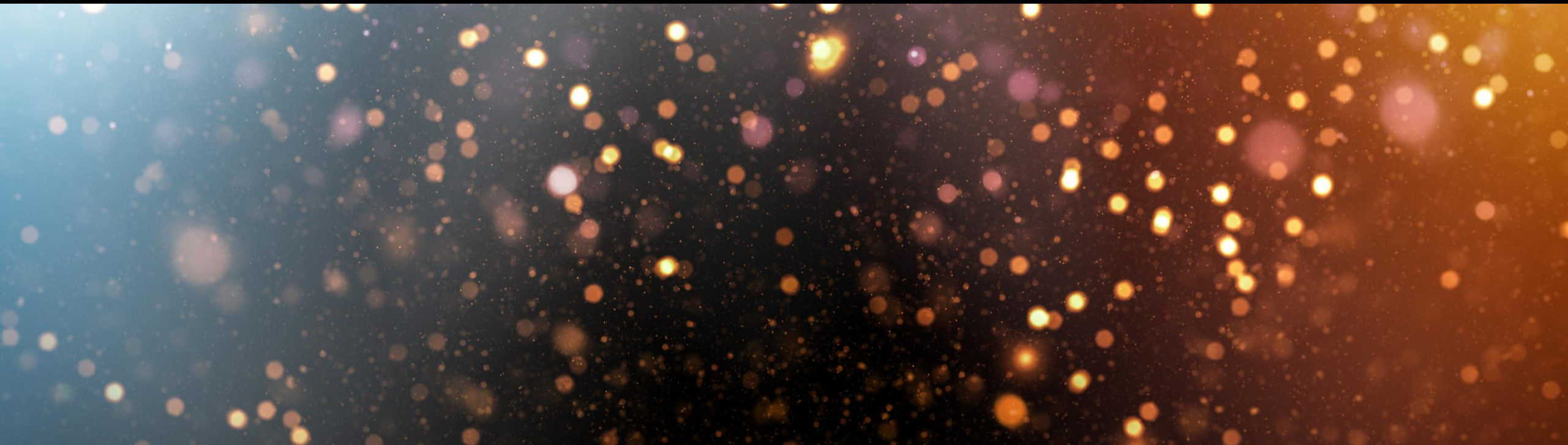
Enter code **5954 9083**

or use the QR code

<https://www.menti.com/alm9kefgds7z>



Additional Information



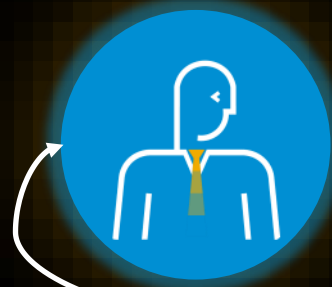
Be a part of SAP Community Call for SAP Cloud ALM Experts



Tonja Kehrer



Megha Nagar



This could be you



Michael Buse



Tim Steuer

SAP Standard Content Overview & News

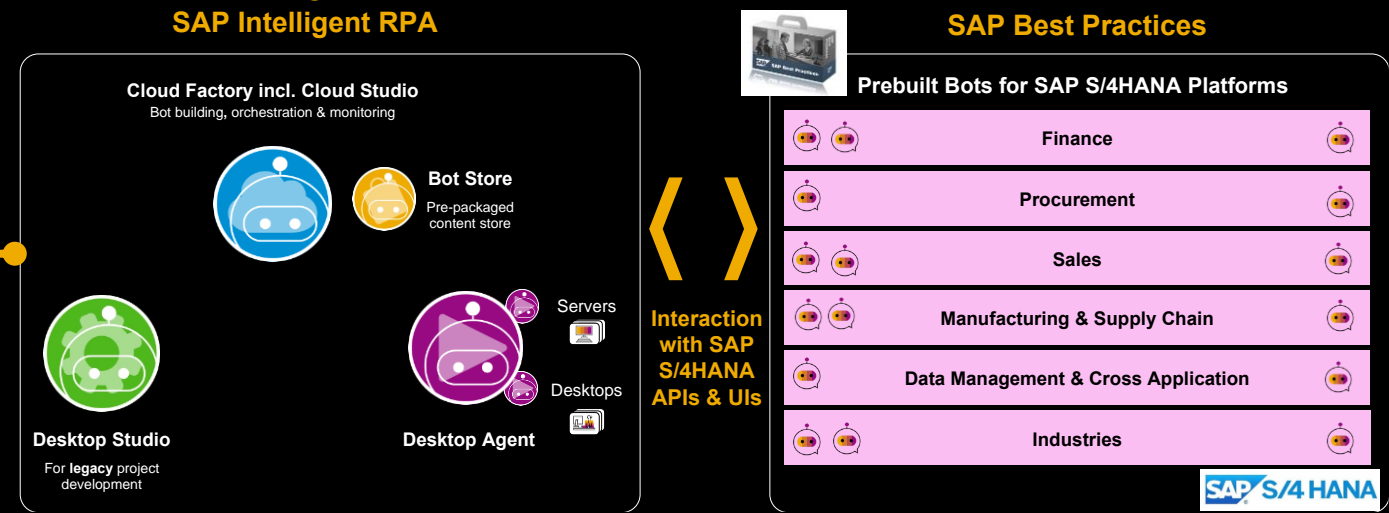
- Pick from following Solution Scenarios
 - SAP Intelligent Suite
 - SAP Best Practices for SAP S/4HANA Cloud
 - SAP Best Practices for SAP S/4HANA On Premise*
 - SAP SuccessFactors
 - SAP Marketing Cloud
 - SAP ARIBA*
 - SAP Public Sector*
 - SAP Integrated Business Planning*
 - **SAP Intelligent Robotic Process Automation (iRPA)**

NEW

- Actions in SAP Cloud ALM
 - Determine Solution Scenario Version
 - Trigger Content Upgrades*
 - Navigate to Additional Assets such as What's new, Websites, Blogs or complementary Excel sheets
 - Make use of accelerators of the package, its scope items, and configuration building blocks

What iRPA Does

- ▶ Automate processes and steps by mimicking the activity of a human operator or end user
- ▶ Utilize existing UI to obtain, process, and enter data and information (e.g. click to open a file on GUI, use a terminal emulator, etc.)
- ▶ Process simple tasks based on business rules which are defined by users in advance
- ▶ Automate high volume/repetitive tasks to allow humans to focus on more complex and/or value-added operations



SAP ALM Summit EMEA

Shape Your Future ALM Strategy!

October 18 to 21, 2022
Manufaktur Mannheim, Germany

Benefit from 4 packed days with 50+ sessions.

Learn from our ALM customers.

Leverage our partners' experience.

Discuss with ALM experts.

Make use of countless networking possibilities.

TICKET PRICE

1.650 € + 19% VAT

[Register here](#)



Gold Sponsor



Silver Sponsor

VOSTURA

NTT Data

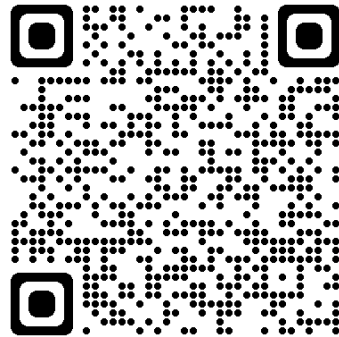
SAP ALM Summit 2022 | NA

Shape your future ALM strategy

Registration is Open!

Join Us in Building a Well-Oiled ALM Strategy

[Register](#)



November 2 - 4, 2022

SAP US Headquarters
Newtown Square, PA



ASUG

SAP[®]

Upcoming Events: Save the date!

SAP ALM Summits 2022:

- **October 18 - 21:** EMEA (in-person) ([register](#))
- **November 2-4:** NA (in-person) ([register](#))

SAP Cloud ALM What's New Quarterly Update:

- **October 27 & 28** ([register](#))



Find all ALM Events here:

<https://support.sap.com/alm-events>

Join us on SAP Community!



Follow the tag [SAP Cloud ALM](#) on SAP Community

Engage with the best and brightest of the software industry

Learn from **blog posts** and **questions and answers**

We will be back!

The next SAP Community Call for SAP Cloud ALM Experts will take place on

November 2nd, 4pm CET | 10am EST

The focus topic of this call will be: **Implementation**

All registered participants will receive an e-mail invite for this call.

Q&A



Thank you.

Contact information:

Tonja Kehrer

cloudalm@sap.com