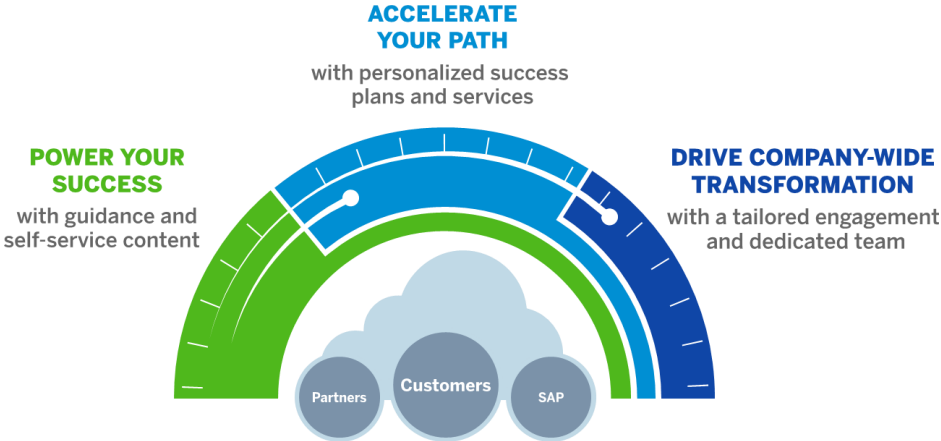




# Don't let data stop your journey to SAP S/4HANA: **Data Management Landscape Transformation**

© 2023 SAP SE or an SAP affiliate company. All rights reserved. | PUBLIC



# Today's Speakers



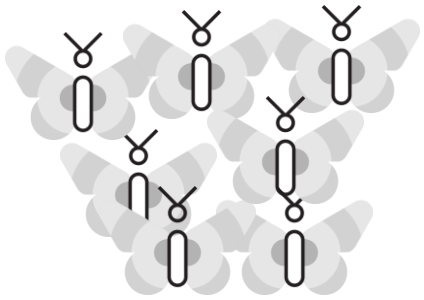
**Andrea Pagliari**

Head of Business Development  
SAP's Cloud Success Services  
EMEA South



**Koustubh Waikar**

Head of Global Customer Engagement  
and EMEA  
Data Management And Landscape  
Transformation  
SAP's Cloud Success Services



Most **innovative** projects

Most **complex** challenges

Most **creative** solutions

SAP Customers  
SAP's Cloud Success Services  
SAP Partners



Privilege



Duty



Witness  
and share



Real-life experiences

Difficulties

Solutions

Methods

Accelerators

Tools



Make SAP  
innovation  
available and easy  
to consume

# 2023 Webinars – H1

Scan for the full  
Webinars Program



January 17 <sup>th</sup>	All Roads Lead to the Cloud: <b>the Four Paths to SAP S/4HANA</b> Private Cloud Edition		SAP S/4HANA
January 31 <sup>st</sup>	Drive Continuous Value with <b>SAP Preferred Success for SAP SuccessFactors</b>		Human Experience Management / Cloud
February 14 <sup>th</sup>	A new way of planning for the <b>SAP SuccessFactors</b> community with <b>Extended Workforce Planning and Analysis (xP&amp;A)</b>		Human Experience Management / Business Technology Platform
March 7 <sup>th</sup>	Drive Continuous Value with <b>SAP Preferred Success for Spend Management</b>		Procurement / Cloud
March 14 <sup>th</sup>	<b>SAP Customer Experience solutions</b> : recipes for success from day one		Customer Experience
March 21 <sup>th</sup>	Your <b>Finance Transformation Roadmap</b> : where to go from your ECC		SAP S/4HANA
March 28 <sup>th</sup>	Don't let data stop your journey to SAP S/4HANA: <b>Data Management Landscape Transformation</b>		SAP S/4HANA
April 4 <sup>th</sup>	Drive Continuous Value with <b>SAP Preferred Success for SAP Business Technology Platform</b>		Business Technology Platform
April 11 <sup>th</sup>	Would you ever <b>start</b> your <b>transformation</b> journey blind? <b>SAP Signavio Process Transformation Suite</b>		SAP Signavio Process Intelligence
April 18 <sup>th</sup>	The Art of Closing with <b>SAP S/4HANA Capabilities</b>		SAP S/4HANA
May 2 <sup>nd</sup>	Build differentiating capabilities with the <b>SAP Business Technology Platform</b>		SAP Business Technology Platform

(cont.d)

# 2023 Webinars – H1 (cont.d)

Scan for the full  
Webinars Program



May 9 <sup>th</sup>	Maximizing value in your continuous <b>SAP Transformations with Premium Engagements</b>		Premium Engagements
May 16 <sup>th</sup>	Deploying <b>SAP S/4HANA Cloud</b> : Everything You Need to Know. Build the future of business with SAP S/4HANA Cloud		SAP S/4HANA
May 23 <sup>rd</sup>	Simplify Your <b>Analytics on SAP S/4HANA</b> in Four Moves!		SAP Business Technology Platform
June 6 <sup>th</sup>	<b>SAP S/4HANA</b> Journey: the perfect moment to <b>rethink</b> your <b>planning</b> platform with <b>SAP Analytics Cloud Planning</b>		SAP Business Technology Platform
June 13 <sup>th</sup>	Quick-start <b>SAP Profitability and Performance Management (PaPM)</b>		SAP S/4HANA
June 20 <sup>th</sup>	Skills of the future and workforce 4.0 <b>with SAP SuccessFactors</b>		Human Experience Management
July 4 <sup>th</sup>	Adopt a Bot: <b>Intelligent Robotic Process Automation (iRPA)</b> for Your Company. iRPA in the context of SAP Process Automation		SAP Business Technology Platform
July 18 <sup>th</sup>	Empowering marketers to drive customer value across all channels with <b>SAP Emarsys Customer Engagement</b>		Customer Experience

# 2023 SAP Training and Adoption Webinars

## H1

**February 8**

### **Empower Your People to Make Business Vision Reality**

We'll show you how to combine traditional project team training with self-paced learning that turns trainees into active participants in your most urgent innovation projects.



[Registration Link](#)

**February 22**

### **Build Core Technical Expertise In-House**

See how to gain fresh ROI from your SAP solutions using the SAP Training and Adoption portfolio



[Registration Link](#)

**March 8**

### **Drive User Adoption with In-the-Moment Learning**

Learn how to improve productivity from day one with embedded learning and simplified training content creation with SAP Enable Now



[Registration Link](#)

**April 26**

### **Make sure your teams get the right training at the right time to ensure ROI and credibility by upskilling to S/4HANA Certifications**

Join our webinar to make sure you get the right SAP training for your move to Cloud. Learn how to update existing EPR Certifications to create credible internal experts.



[Register now](#)

**May 24**

### **Let your users create their own content for learning in the "flow of work"**

Join us for a conversation with a customer and their experience with SAP Enable Now and how they are using it to continue their inflow of work training option.

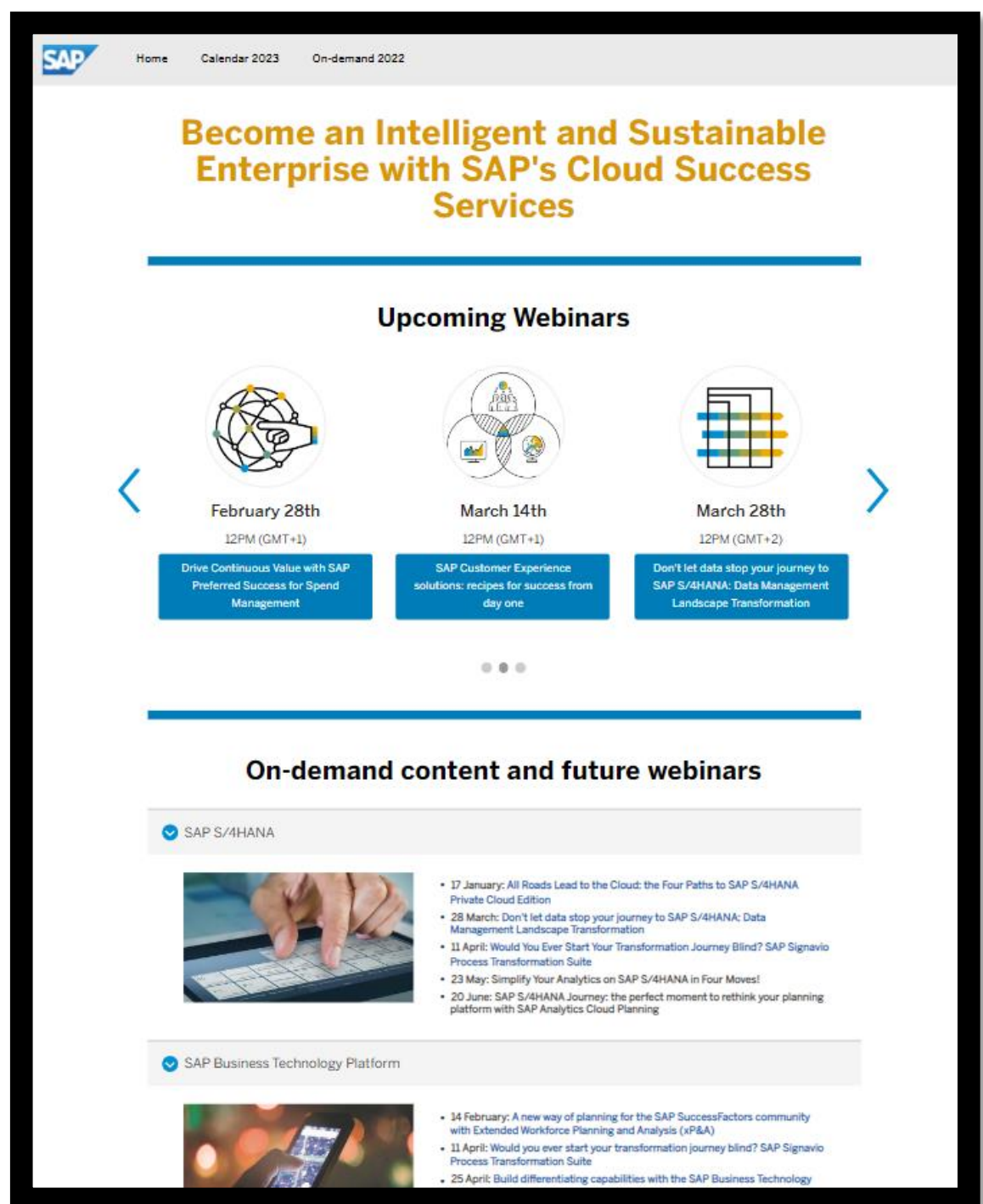


# Full Calendar of Webinars 2023

Scan for the full  
Webinars Program



[Direct Link to Full Calendar](#)



The screenshot shows the SAP webinars page. At the top, there is a navigation bar with 'SAP', 'Home', 'Calendar 2023', and 'On-demand 2022'. The main heading is 'Become an Intelligent and Sustainable Enterprise with SAP's Cloud Success Services'. Below this is a section titled 'Upcoming Webinars' with three cards:

- February 28th**, 12PM (GMT+1): Drive Continuous Value with SAP Preferred Success for Spend Management
- March 14th**, 12PM (GMT+1): SAP Customer Experience solutions: recipes for success from day one
- March 28th**, 12PM (GMT+2): Don't let data stop your journey to SAP S/4HANA: Data Management Landscape Transformation

Below the upcoming webinars is a section for 'On-demand content and future webinars'. It is divided into two categories:

- SAP S/4HANA**
  - 17 January: All Roads Lead to the Cloud: the Four Paths to SAP S/4HANA Private Cloud Edition
  - 28 March: Don't let data stop your journey to SAP S/4HANA: Data Management Landscape Transformation
  - 11 April: Would You Ever Start Your Transformation Journey Blind? SAP Signavio Process Transformation Suite
  - 23 May: Simplify Your Analytics on SAP S/4HANA in Four Moves!
  - 20 June: SAP S/4HANA Journey: the perfect moment to rethink your planning platform with SAP Analytics Cloud Planning
- SAP Business Technology Platform**
  - 14 February: A new way of planning for the SAP SuccessFactors community with Extended Workforce Planning and Analysis (xP&A)
  - 11 April: Would you ever start your transformation journey blind? SAP Signavio Process Transformation Suite
  - 25 April: Build differentiating capabilities with the SAP Business Technology



**Koustubh Waikar**

Head of Global Customer Engagement  
and EMEA  
Data Management And Landscape  
Transformation

SAP's Cloud Success Services

# Don't let data stop your journey to SAP S/4HANA: **Data Management Landscape Transformation**





# Don't let data stop your journey to SAP S/4HANA

## Data Management and Landscape Transformation

March 28 2023

Koustubh Waikar.  
Head of Global Customer Engagement and EMEA.  
Data Management And Landscape Transformation.

# Accelerating transition to S4HANA Private Cloud Edition

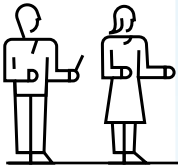
## Questions relating to the management of your data

How to **decide** for the right **transition path**?

How can I **accelerate** transition to S4HANA on PCE

How can I trace and **validate the completeness and correctness of migration** for auditing purpose?

How can I **accelerate** my **M&A and rollout activities** in IT to match my business demands.



How to reflect **business strategy** into data strategy on IT platform? **Architecture** to get value out of data?

How do I manage **process transformations** while moving to the **Intelligent Enterprise**?

How to **improve data accuracy and quality** for analytics and proper business decision making?

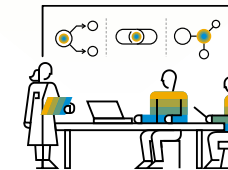
How to ensure data compliance regulations **GDPR**: "**Privacy by design and by default**"?



Prepare Transition



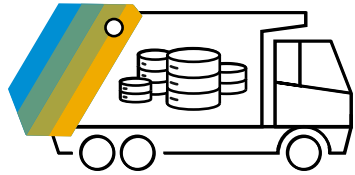
Execute Transition



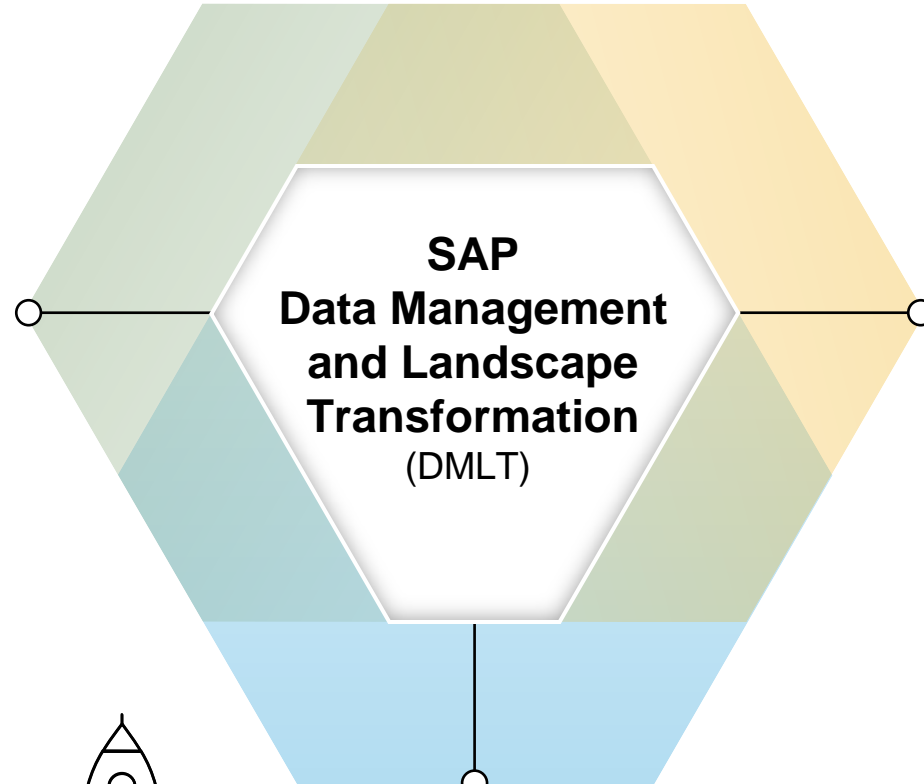
Deliver business value



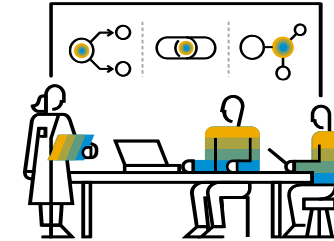
SAP DMLT provides End-to-End data coverage from **advisory**, **architecture** to **design** and **execution**.



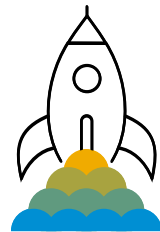
**Data Management**



**SAP  
Data Management  
and Landscape  
Transformation  
(DMLT)**



**System Landscape  
Optimisation**  
for the Intelligent Enterprise



**Transition**  
into the Intelligent Enterprise

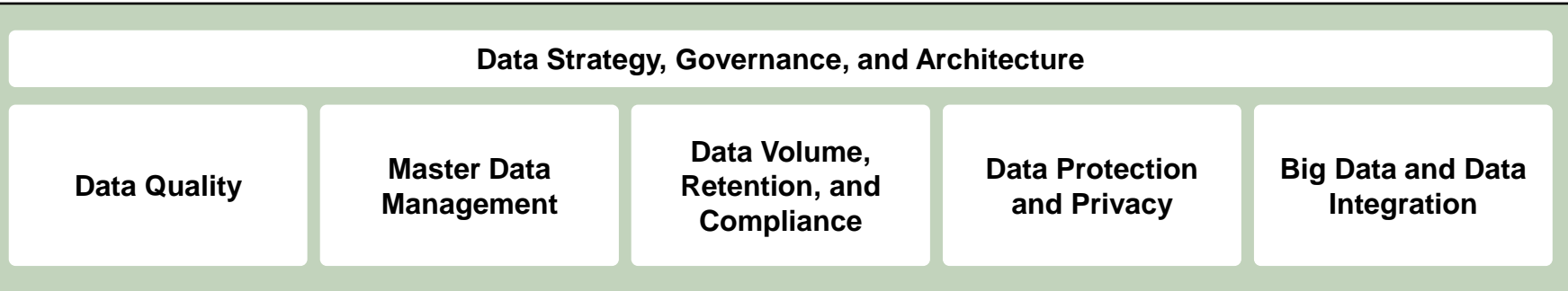


# SAP Service Portfolio for Data Management & Landscape Transformation

Extensive competencies – What we cover?

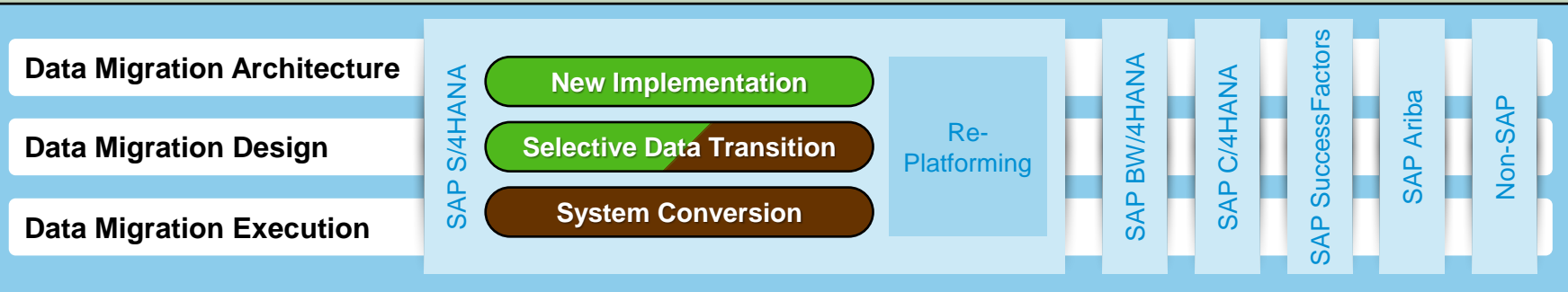
## ○ Advisory for Data Management and Data Migration

### Data Management



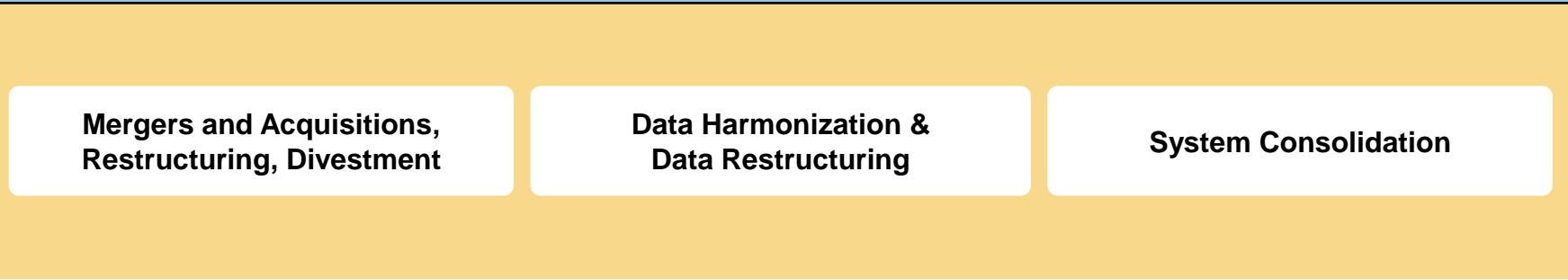
### Transition

into the Intelligent Enterprise



### System Landscape Optimisation

for the Intelligent Enterprise



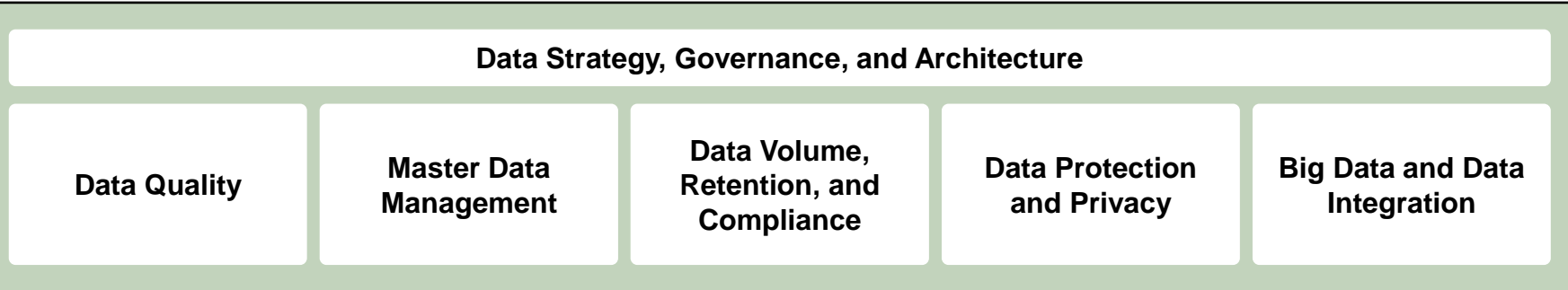


# SAP Service Portfolio for Data Management & Landscape Transformation

Extensive competencies – What we cover?

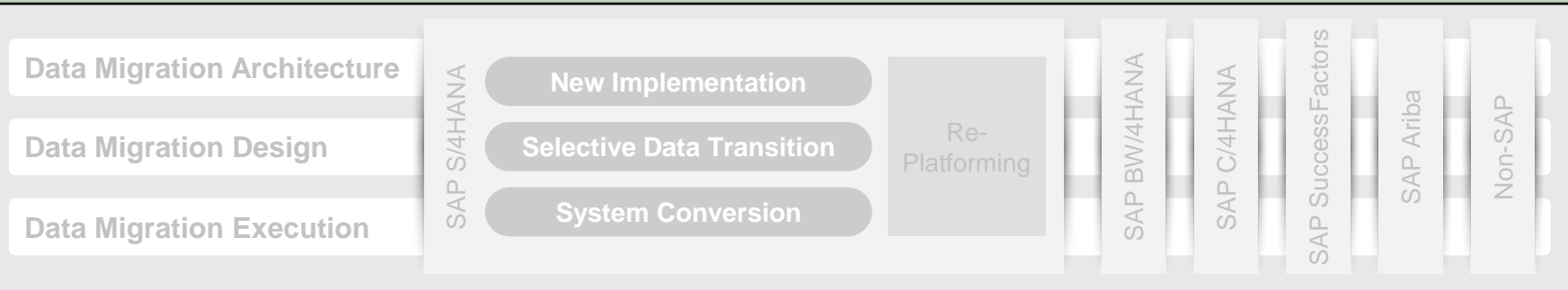
## ○ Advisory for Data Management and Data Migration

### Data Management



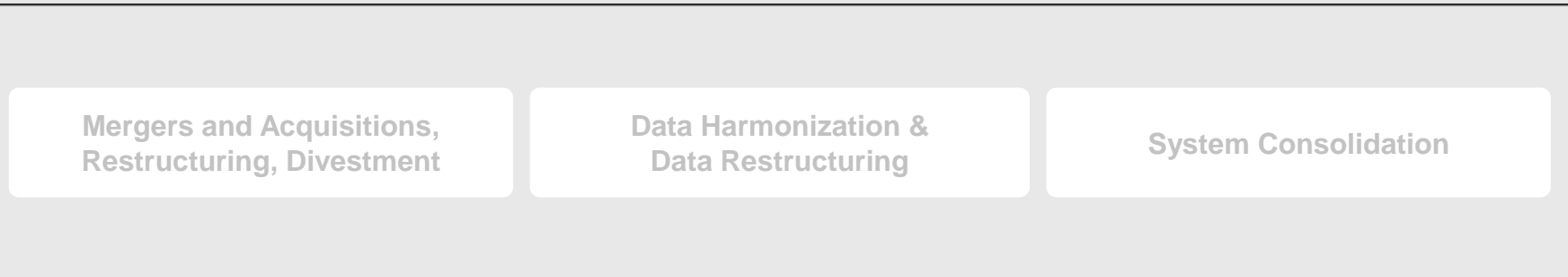
### Transition

into the Intelligent Enterprise



### System Landscape Optimisation

for the Intelligent Enterprise





# SAP DMLT Data Management Wheel – We cover all Data-related topics

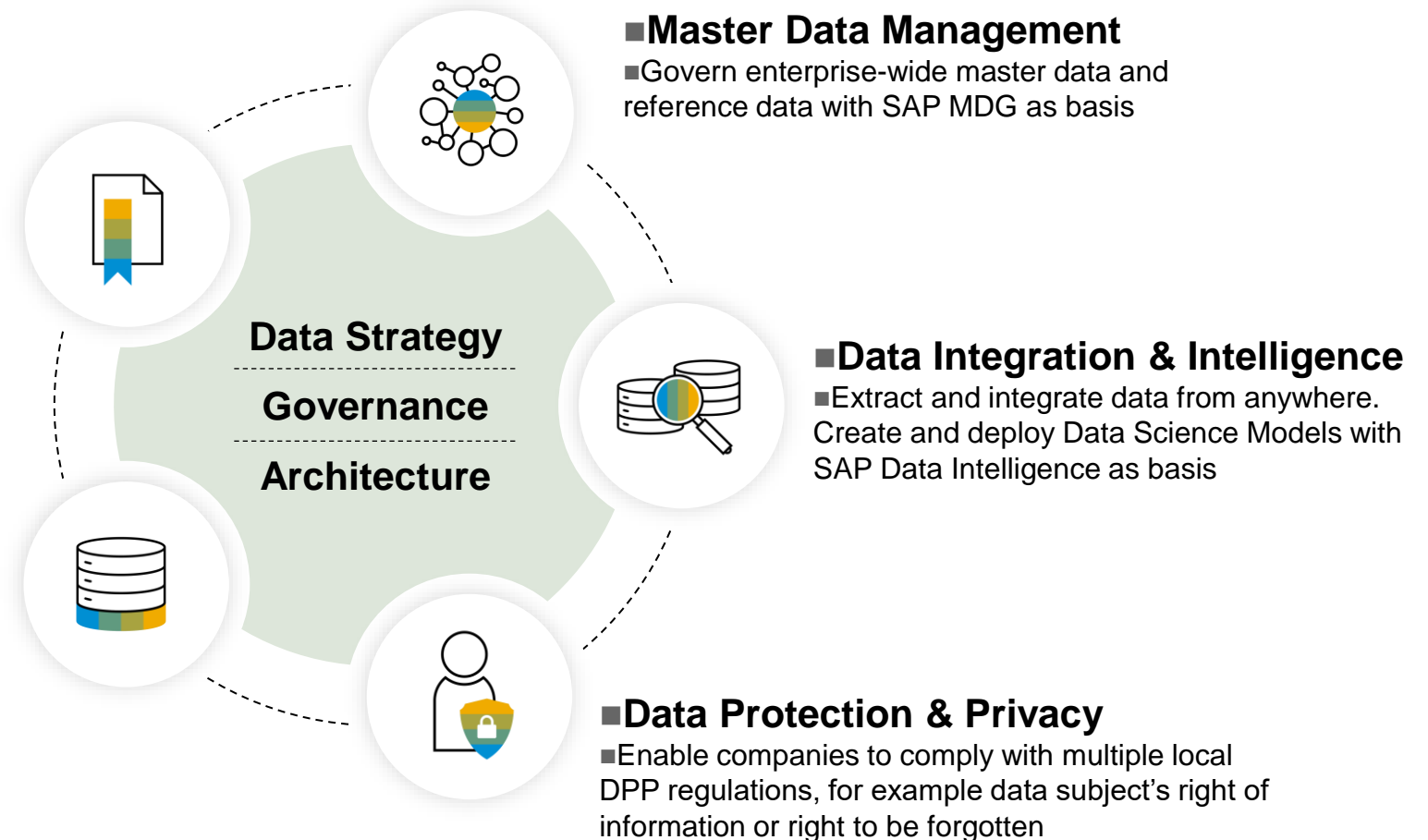
Utilizing the power of SAP standard products **AND** DMLT consulting solutions on top to cover all data-related needs. SAP DMLT provides E2E data coverage from advisory, architecture to design and execution.

## ■ Data Quality

- Cleanse and govern data quality to improve asset information

## ■ Data Volume, Retention, Compliance

- Perform fast data archiving, manage data retention, and system decommissioning with SAP Information Lifecycle Management (ILM) as basis



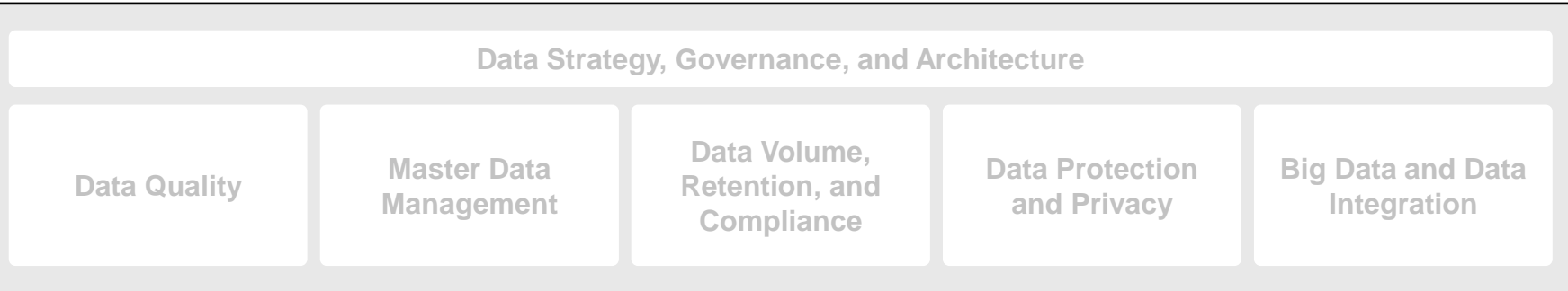


# SAP Service Portfolio for Data Management & Landscape Transformation

Extensive competencies – What we cover?

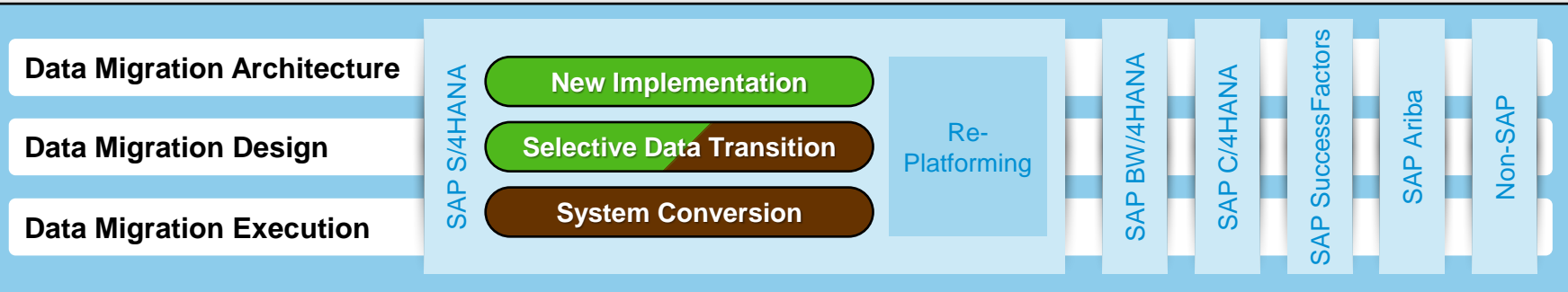
## Advisory for Data Management and Data Migration

### Data Management



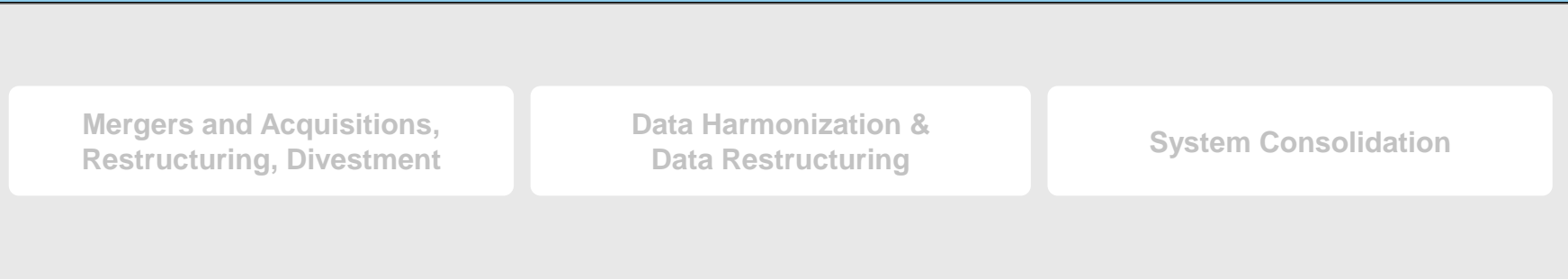
### Transition

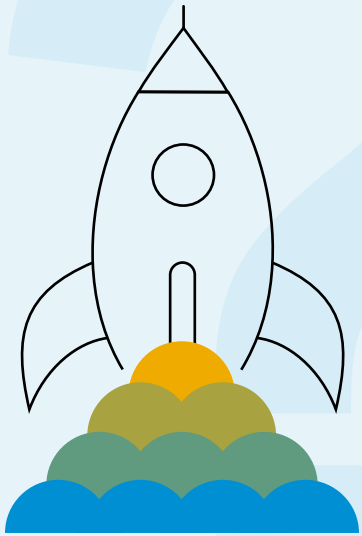
into the Intelligent Enterprise



### System Landscape Optimisation

for the Intelligent Enterprise





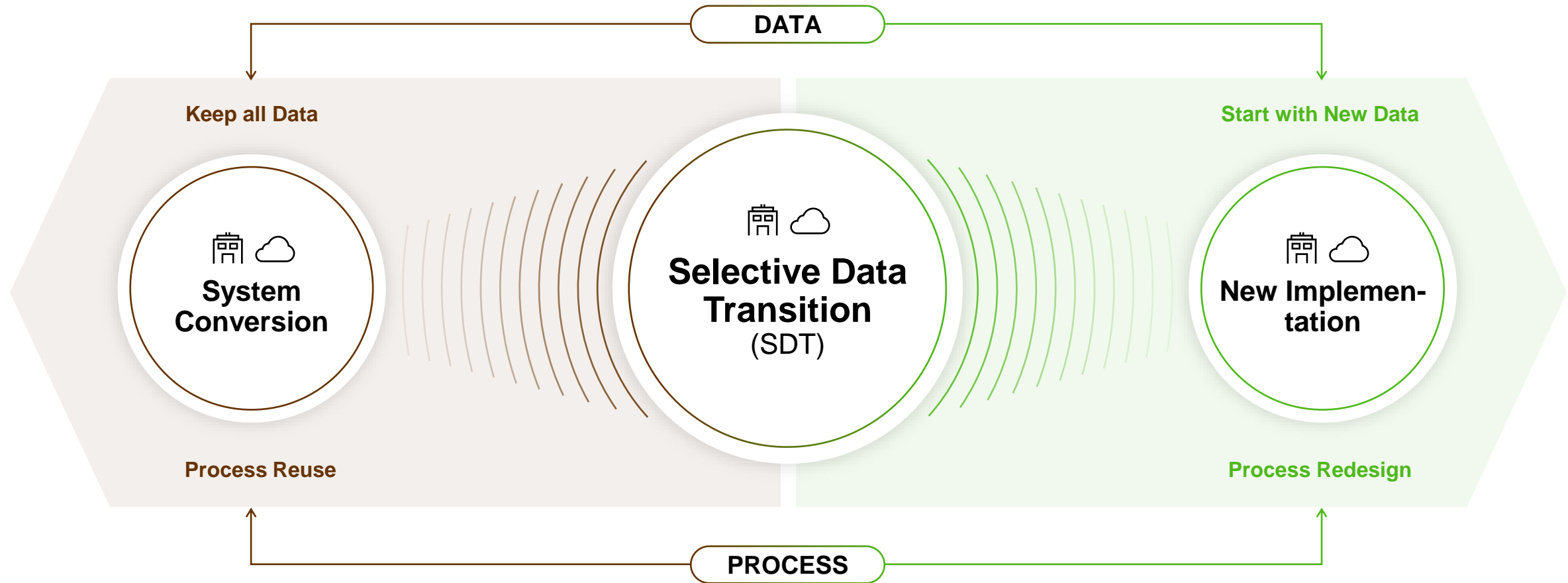
**WHY**  
**TRANSITION**  
**INTO THE INTELLIGENT**  
**ENTERPRISE**  
**and**  
**SELECTIVE DATA**  
**TRANSITION?**

**Our Customers require a solution  
for the transition and adoption of  
their critical business data into  
a future ready platform.**





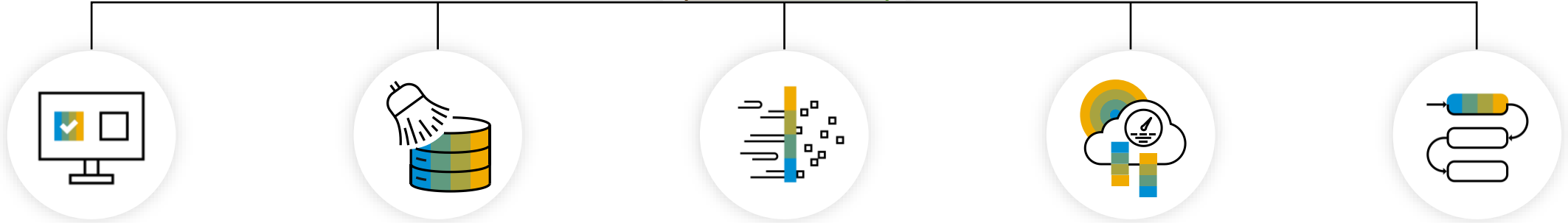
# Setting the context – Selective Data Transition: A 3rd option





# Summary – Why use SDT to move to SAP S/4HANA?

What  
**Selective Data  
Transition**  
offers



## **Selective Innovation**

Adjust processes where innovation matters but not starting from scratch

## **Selective History**

Clean-Up of “grown” SAP Landscapes whilst retaining investments

## **Transformation on-the-fly**

Short Track the Transition by bypassing preparation projects




## **Split, Restructure, Consolidation**

Streamline System environments potentially into the cloud





## **Phased Approach**

Stepwise Transition to SAP S/4HANA while retaining historical data

# Reference Projects by Selective Data Transition

Company	Challenge	Project description
 <p><b>Selective Data Transition (LAC – BR)</b></p>	<p>•Migrated <b>selected company codes</b> from ERP system of 70TB of data to a new S/4HANA system with a <b>Near Zero downtime Approach</b></p>	<ul style="list-style-type: none"> <li>▪ <b>Data base size of 70 TB Data ;</b></li> <li>▪ <b>Migrate 17 company codes</b> from ERP system to a new S/4HANA system with a Near Zero Downtime</li> <li>▪ Use of existing customizing and migration of specific data to speed up realization phase</li> <li>▪ Creation of Target System via Shell Creation. Selective Data Migration of all transactional and master data related to these company codes</li> <li>▪ Some Figures: 1.212 G/L accounts in Balance Sheet; 2 Million Fixed Assets to convert to S/4HANA: New Asset Accounting was not in place so New Asset Accounting needed to be activated during System Conversion ; BSEG table (3.5 billion recs); ACDOCA table (resulting G/L line items): 4.7 billion recs</li> <li>▪ <a href="https://dam.sap.com/mac/download/ap/vi642ET.htm">https://dam.sap.com/mac/download/ap/vi642ET.htm</a></li> </ul>
 <p><b>Selective Data Transition</b></p>	<p>•Migrate to a modern, intelligent ERP system to enable <b>data-driven processes</b>, simplify data structures, and serve as a future digital management platform</p>	<ul style="list-style-type: none"> <li>▪ Decision to adopt SDT after DMLT PoC project to evaluate our migration performance result</li> <li>▪ DMLT full data migration for large 2 systems. For Head quarter and product manufacturing system simultaneously in parallel – biggest one migrated total <b>32 billions rows, 2.0TB HANA with 23 hours</b>, including XPRA conversion.</li> <li>▪ Minimize Downtime with uptime static data migration approach for past years.</li> <li>▪ <b>3 test cycle</b> and Go-live migration for each systems.</li> <li>▪ Customize comparison to validate the missing entries of direct maintained customizing data for the S/4HANA target shell.</li> <li>▪ Database expert support to optimize HANA memory management during data migration.</li> <li>▪ <a href="#">NEC: Getting the Support and Guidance to Streamline a Large-Scale Digital Transformation (sap.com)</a></li> </ul>
 <p><b>Selective Data Transition</b></p>	<p>•Replacement of large legacy system customized over 27 years with more than two million lines of code</p>	<ul style="list-style-type: none"> <li>▪ System Size: <b>~1,75 TB DB6</b>; Shell Conversion from ECC 6.0 EhP5 to SAP S/4HANA 2020</li> <li>▪ Selective table-based migration by organizational units (39 company codes) and by time-slice using OBT &amp; MWB Consulting tools</li> <li>▪ For migration of financial documents and totals A2L (Account-to-Ledger) on-the-fly solution was applied.</li> <li>▪ Transformation from various costing-based Operating Concerns in various controlling areas to one single new Margin Analysis/account-based CO-PA environment in S/4 HANA in one controlling area</li> <li>▪ The data validation solution based on LTVF has been implemented (support the consistency of mapping for accounts and cost elements &amp; compare settings of accounts and cost elements in the target + source</li> <li>▪ 3 Test Cycles + 2 Technical Cycles + Dress Rehearsal + Go-live</li> <li>▪ <a href="https://dam.sap.com/mac/u/a/kvT4bnh.htm?rc=10">https://dam.sap.com/mac/u/a/kvT4bnh.htm?rc=10</a></li> <li>▪ Video: <a href="https://www.youtube.com/watch?v=qFezzorscGU">https://www.youtube.com/watch?v=qFezzorscGU</a></li> </ul>

# Reference Projects by Selective Data Transition

Company	Challenge	Project description
 <p><b>NISSHA</b> Selective Data Transition</p>	<p>Migration to SAP S/4HANA Cloud with an embedded business warehouse and the SAP Access Control application</p>	<ul style="list-style-type: none"> <li>Convert from S4HF1605 to S4H1709 and integrate recent acquired company in SAP ERP application to the same instance of SAP S/4HANA. <i>Integration</i> and adaption from acquired company to their own processes.</li> <li>Hybrid approach posting accounting and LT migration for MM including 12 months history.</li> <li>Company Code Details transfer for each of the plants.</li> <li><a href="https://dam.sap.com/mac/u/a/XwrE8rs.htm?rc=10">https://dam.sap.com/mac/u/a/XwrE8rs.htm?rc=10</a></li> </ul>
 <p><b>JTI</b> Selective Data Transition</p>	<p>Agile Selective Data Transition ECC 6.0 EHP7 to S/4HANA 1709</p>	<ul style="list-style-type: none"> <li>6-Step-Approach</li> <li>Complex migration rules: Split, restrictions, transforming</li> <li>Master Data Freeze Safeguarding by comparing table snapshots for 1.200 tables on daily basis</li> <li>Approx. 1.700 tasks to be executed in around 3 weeks in a 24/7 mode.</li> <li><a href="https://www.sap.com/services/implementation/data-mgmt-landscape-transformation.html?pdf-asset=004884fa-a17d-0010-87a3-c30de2ffd8ff&amp;page=2&amp;source=social-atw-mailto">https://www.sap.com/services/implementation/data-mgmt-landscape-transformation.html?pdf-asset=004884fa-a17d-0010-87a3-c30de2ffd8ff&amp;page=2&amp;source=social-atw-mailto</a></li> </ul>
 <p><b>Cheralui</b> cuesta menos Selective Data Transition</p>	<p>ERP system 32 TB to migrate in a New S/4HANA system to minimize</p>	<ul style="list-style-type: none"> <li>ERP system 32 TB to migrate in a New S/4HANA system to minimize TCO. Use of existing customizing and migration of specific data to speed up realization phase</li> <li>Creation of Target System via Shell Creation. Selective Data Migration of all FI documents for 2019 and all FI open items, all sales and purchasing open items with all corresponding history. Migration of all master data</li> <li><a href="https://www.sap.com/documents/2020/06/b84bf5ac-9f7d-0010-87a3-c30de2ffd8ff.html">https://www.sap.com/documents/2020/06/b84bf5ac-9f7d-0010-87a3-c30de2ffd8ff.html</a></li> </ul>
 <p><b>sappi</b> Selective Data Transition</p>	<p>Convert from S4HF1605 to S4H1709</p>	<ul style="list-style-type: none"> <li>Migration to S/4HANA Cloud Extended Edition (ex-STE) environment (ERP 6.0 EhP7 on HANA in HEC to S/4HANA 1909 FPS01 Extended Edition)</li> <li>Migration with embedded BW and GRC, and integration with ADS, PI, Solution Manager and Central Process Scheduling (CPS)</li> <li>Functional conversion delivered by Functional Conversion factory -Sandbox conversion with full business data, and all conversion preparation and post activities for each test cycles and go-live</li> <li><a href="#">Data Management and IT Landscape Transformation Services   DMLT (sap.com)</a></li> </ul>

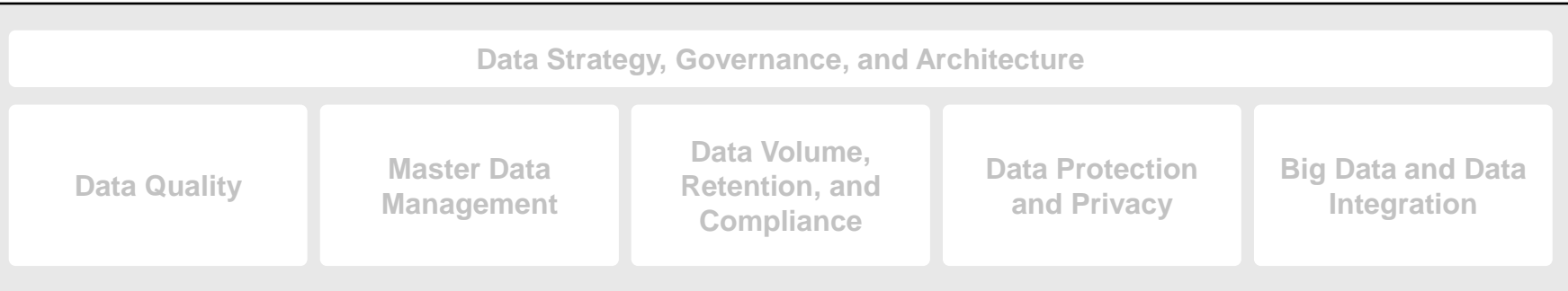


# SAP Service Portfolio for Data Management & Landscape Transformation

## Extensive competencies – What we cover?

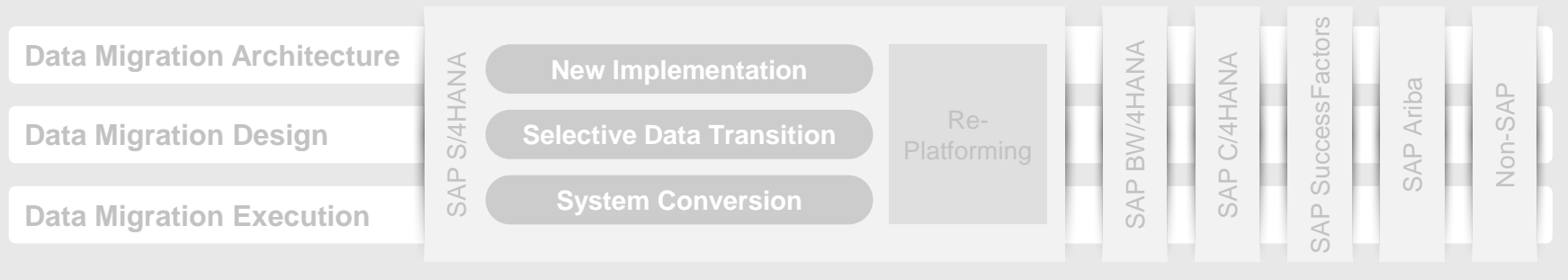
### Advisory for Data Management and Data Migration

#### Data Management



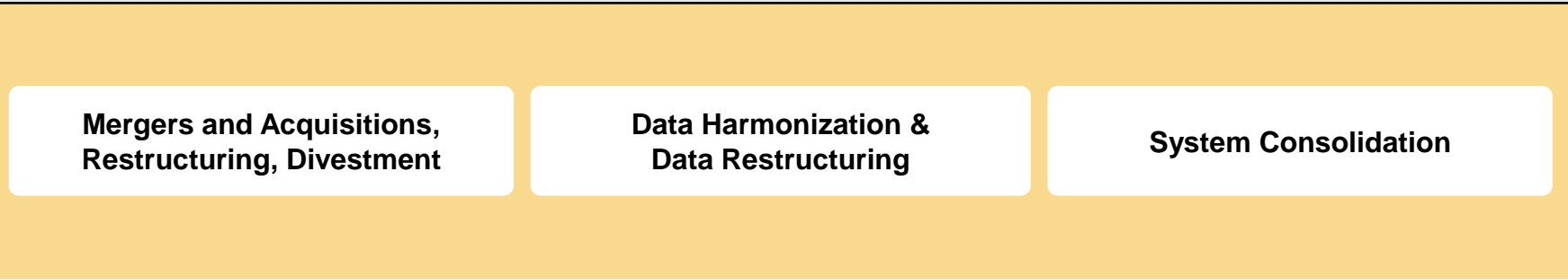
#### Transition

into the Intelligent Enterprise



#### System Landscape Optimisation

for the Intelligent Enterprise





# SLO for the Intelligent Enterprise – What does it mean?

## • Divestiture

### Mergers, Acquisitions and Restructuring

- **Divestment / preparation of a divestment:** separation / carve out of companies or parts of companies
- **Corporate restructuring:** implement Principal Agent Model, merge companies, ...
- Outsourcing of business processes or establishing of shared services
- **Restructuring in controlling:** implement global controlling, ...

## System Landscape Optimisation

## • Consolidations

### System Consolidation

- Reduce the number of SAP systems and productive clients
- **Template roll-out** - Migrate existing SAP and legacy systems into new or existing SAP systems
- Integrate newly acquired business into an already existing landscape

## • Harmonization

### Data Unification and Harmonization

- Simplify (group) closing and reporting procedures, align financial reporting to global standards, ...
- **Harmonize master data:** material, customer, vendor, ...
- Reorganize controlling structures
- Adjust currencies to legal or business requirements

# SAP DMLT Top 5 Services requested by our customers out of 100+ available services

## 1 S/4HANA Migration

---

Selective Data Transition, Data Migration Design and Execution

## 2 Carveout / System Split

---

Company Code Split, delete, merge and / or transfer requirements

## 3 Data Management

---

Managing data privacy needs for GDPR, master data and cleansing

## 4 System Consolidation

---

Consolidation of systems for TCO and / or customer merging of business processes

## 5 Currency Conversions

---

Changing currency due to local laws or business requirements



# DMLT Automation Solution Value Driver – Foster SAP Rise Adoption

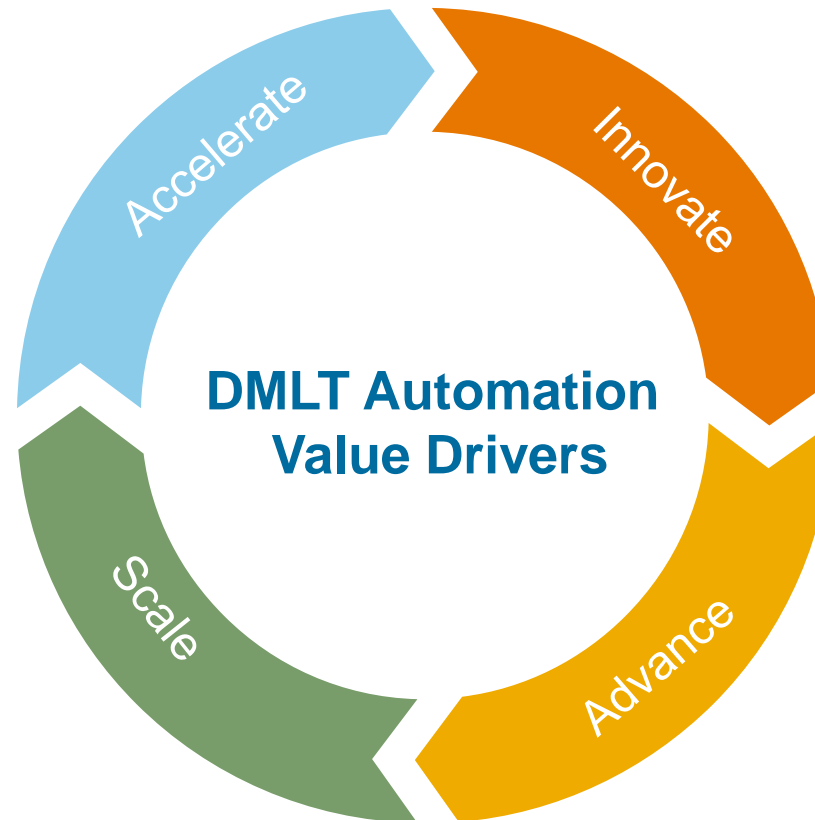
## Accelerate Transition to S4HANA

- On the Fly solutions – New GL Migration, Customer Vendor Integration, GRC Consolidation.
- Business Data Validation.
- ILM and System Decommissioning.

## Standardize and Scale

- Company code delete on S4
- Company code carve-out from S4 to S4

Facilitate Mergers and Divestitures on S4HANA



## Innovate

- Accelerate M&A and roll-out Activities with golden templates to set-up new company code - Company code clone on S4HANA.
- Set-up new project landscape in S4HANA RISE with configuration to get a head start in transformation projects - Shell creation for S4HANA

## Advance Beyond Product Limitations

- Currency Transformations for S4HANA
- OnPrem HCM payroll in SF EC Payroll



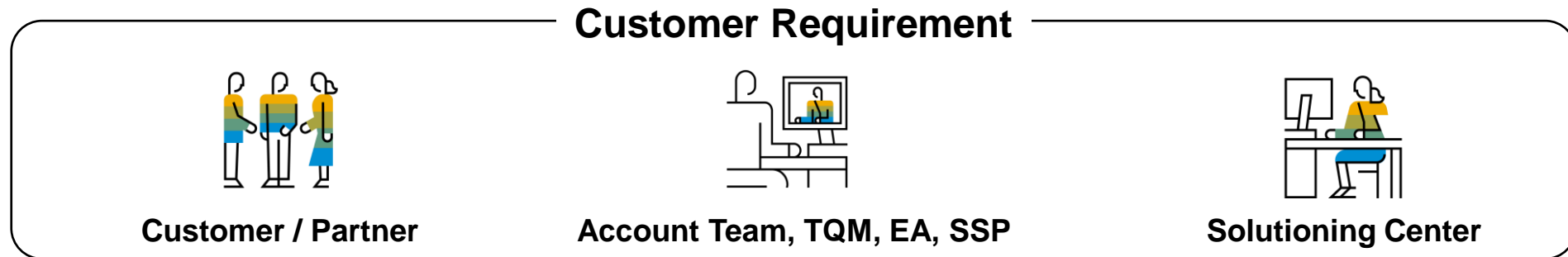
## DMLT Automation Program – Customer View

The DMLT Automation Solutions improve the delivery of services in the customer environment. Depending on customer scenarios DMLT automation solutions:



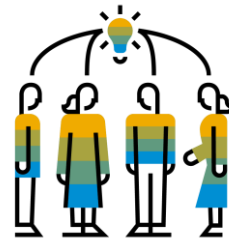
- **Lower** the number of overall projects by combining outcomes / combining projects
- **Reduce** the project runtime
- **Simplify onboarding of SAP Resources**
- **Embed** mandatory prerequisites / pre projects (like Customer Vendor Integration) into the transition project ECC to S4
- **Increase** the quality of the service delivery
- **Mitigate risks** by using automations (Risk impact / Quality)

# How to reach out ?



## Proactive and Holistic Solutioning Engagement Architects

**DMLT Global Customer Engagement Architects**



**400+ Service Experts Globally**

**Contact our DMLT global inbox:**  
[sap\\_dmlt\\_gce@sap.com](mailto:sap_dmlt_gce@sap.com)



# How to reach out ?

**SAP DMLT Global Customer Engagement** [sap\\_dmlt\\_gce@sap.com](mailto:sap_dmlt_gce@sap.com)



## [DMLT overview - DMLT at a Glance](#)

W DMLT <https://www.sap.com/services/implementation/data-mgmt-landscape-transformation.html>



Data unification and harmonization  
Analyze and clean incorrect data from your customers, partners, and products. Unify and standardize your financial and controlling processes.

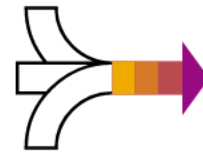
[Read the financials solution brief](#)

[Read the logistics solution brief](#)



Mergers, acquisitions, and restructuring  
Transform SAP data and system landscapes to support mergers, acquisitions, and divestitures – as well as spin-offs and complex organizational restructurings.

[Read the solution brief](#)



Fast-track your transition to SAP with data management and data migration services

DMLT offers a holistic approach for your data-related needs with data quality and data integration services. Connect remotely with our extensive skills, proven tools, and marketplace experience

[Learn more](#)



Information management and governance

Manage and protect your master data – and make performance improvements based on fast, accurate, and complete information.

[Read the solution brief](#)

[View all data compliance industry use cases](#)

# Thank you.



## **Koustubh Waikar**

Head of Global Customer Engagement and EMEA  
Data Management and Landscape Transformation.  
Customer Success, SAP.

E: [koustubh.waikar@sap.com](mailto:koustubh.waikar@sap.com)

<https://webinars.sap.com/mea/sap-services-emea-south-intelligent-enterprise/en/home>

Follow us



[www.sap.com/contactsap](http://www.sap.com/contactsap)

© 2023 SAP SE or an SAP affiliate company. All rights reserved.

No part of this publication may be reproduced or transmitted in any form or for any purpose without the express permission of SAP SE or an SAP affiliate company.

The information contained herein may be changed without prior notice. Some software products marketed by SAP SE and its distributors contain proprietary software components of other software vendors. National product specifications may vary.

These materials are provided by SAP SE or an SAP affiliate company for informational purposes only, without representation or warranty of any kind, and SAP or its affiliated companies shall not be liable for errors or omissions with respect to the materials. The only warranties for SAP or SAP affiliate company products and services are those that are set forth in the express warranty statements accompanying such products and services, if any. Nothing herein should be construed as constituting an additional warranty.

In particular, SAP SE or its affiliated companies have no obligation to pursue any course of business outlined in this document or any related presentation, or to develop or release any functionality mentioned therein. This document, or any related presentation, and SAP SE's or its affiliated companies' strategy and possible future developments, products, and/or platforms, directions, and functionality are all subject to change and may be changed by SAP SE or its affiliated companies at any time for any reason without notice. The information in this document is not a commitment, promise, or legal obligation to deliver any material, code, or functionality. All forward-looking statements are subject to various risks and uncertainties that could cause actual results to differ materially from expectations. Readers are cautioned not to place undue reliance on these forward-looking statements, and they should not be relied upon in making purchasing decisions.

SAP and other SAP products and services mentioned herein as well as their respective logos are trademarks or registered trademarks of SAP SE (or an SAP affiliate company) in Germany and other countries. All other product and service names mentioned are the trademarks of their respective companies.

See [www.sap.com/copyright](http://www.sap.com/copyright) for additional trademark information and notices.

