

# OpenText insights into the Oil and Gas Industry

An SAP Solution Extensions by OpenText newsletter



## In this issue

Explore Forrester's total impact study of Enterprise Asset Management solutions for Asset Intensive Industries [↗](#)

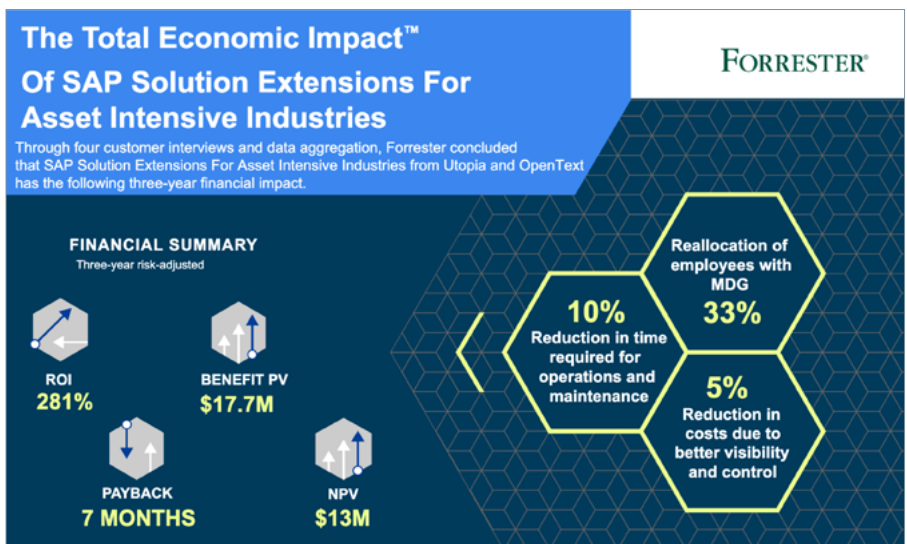
Case Study – Forrester total economic impact study of SAP EAM solution extensions [↗](#)

Boost remote workers productivity with Extended ECM for Office 365 [↗](#)

## Information Management for Asset Intensive Industries

Cameron Brennan

Capital-intensive industries like chemicals are facing rapid changes in supply and demand. These companies often struggle to maximize the value of their asset information to keep their facilities running profitably during any economic condition. Information is often too disorganized and scattered across too many (often competing) solutions to quickly and easily access and find insights. This leads to expensive rework and downtime. Delayed access to information negatively impacts how project, operations, and maintenance teams meet deadlines, work productively, and adhere to compliance requirements – resulting in millions in lost revenue.





According to the Forrester Consulting report “The Total Economic Impact of SAP Solution Extensions for Asset-Intensive Industries,” it’s possible to break through this asset information trap. A unified, enterprise-wide core system of asset information management and master data governance can help capital-intensive organizations set the foundation they need to seize a US\$17.7 million edge spread across the next three years.

[OpenText™ Extended ECM for SAP® Solutions](#) and the add-on for [Capital Projects and Operations](#) allows organizations to connect a wide range of structured and unstructured content and integrate it with their existing SAP deployments. Operations users can quickly search for specific content about equipment, parts, or processes as key data attributes are associated with source engineering and process documents. Providing operations and maintenance employees with an efficient way to find the correct information they need ensures that they spend less time searching and more time on operations tasks. Furthermore, the likelihood that they use incorrect information to perform tasks declines, reducing rework while improving asset uptime revenues

## Bridging the gap between Microsoft and SAP

**Jonathan Beardsley**

As we continually adapt our ways of working more and more we are adopting collaboration solutions like Microsoft Teams and Office 365 to partially replace the physical collaboration we were used to.

By disconnecting the digital workplace from the digital business your organization is at increased risk in a number of ways. New silos of content are being created that are not connected to core business application's in SAP. Capital projects typically have hundreds of thousands of documents created and to ensure compliance, single source of truth it is ideal that the source of creation is not disconnected from the capital projects structures that have been put in place

[OpenText Extended ECM for Office 365®](#) connects the collaboration and creation environments of Microsoft directly to the structured objects with SAP. Users can create, update and collaborate on content safely, in a controlled, secure and managed environment connected directly to the SAP workspaces. This helps to ensure that business continuity is maintained, security is controlled and corporate governance is ensured.

