

SAP Cloud Platform Integration Suite

Monthly Updates – December 2019

Meghna Shishodiya, Vinayak Adkoli, Alexander Bundschuh
Product Management, SAP Cloud Platform Integration Suite

Disclaimer

The information in this presentation is confidential and proprietary to SAP and may not be disclosed without the permission of SAP. Except for your obligation to protect confidential information, this presentation is not subject to your license agreement or any other service or subscription agreement with SAP. SAP has no obligation to pursue any course of business outlined in this presentation or any related document, or to develop or release any functionality mentioned therein.

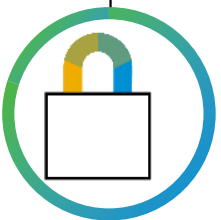
This presentation, or any related document and SAP's strategy and possible future developments, products and or platforms directions and functionality are all subject to change and may be changed by SAP at any time for any reason without notice. The information in this presentation is not a commitment, promise or legal obligation to deliver any material, code or functionality. This presentation is provided without a warranty of any kind, either express or implied, including but not limited to, the implied warranties of merchantability, fitness for a particular purpose, or non-infringement. This presentation is for informational purposes and may not be incorporated into a contract. SAP assumes no responsibility for errors or omissions in this presentation, except if such damages were caused by SAP's intentional or gross negligence.

All forward-looking statements are subject to various risks and uncertainties that could cause actual results to differ materially from expectations. Readers are cautioned not to place undue reliance on these forward-looking statements, which speak only as of their dates, and they should not be relied upon in making purchasing decisions.

Agenda

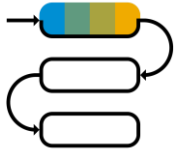


- SAP Cloud Platform Integration
- SAP Cloud Platform API Management & API Business Hub
- SAP Process Orchestration
- SAP Application Interface Framework
- Q&A



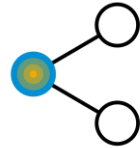
SAP Cloud Platform Integration Suite

A modular iPaaS to connect the Intelligent Enterprise



Cloud Integration

Seamlessly integrate anything, anywhere (A2A/B2B) in real time.



API Management

Expose your data and processes as APIs. Manage E2E life cycle.



Integration Advisor

Accelerate implementation and maintenance of B2B scenarios using machine learning.



API Business Hub

Jump start integration projects with APIs, packaged integration content and adapters.



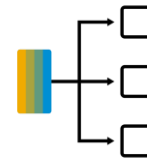
Data Intelligence

Deliver data-driven innovation, unifying enterprise AI and intelligent information management.



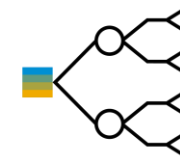
Open Connectors

Accelerate connectivity to 3rd party applications.



Connectivity

Securely access remote services that run on-premise.



Enterprise Messaging

Decouple communication and send messages & events.

What's New!! - SAP Cloud Platform Integration Suite

- What's New Initiative -
 - Newsletter: **First Monday**
 - Webinar: **Last Tuesday**
- One time subscription - no need to register for individual webinars
- Consolidated **Landing page** for all the Suite services – monthly aggregation
- Links to blogs, upcoming events, important news, updates, recordings, etc. for all Suite services in one newsletter

SAP® Cloud Platform **Integration Suite** THE BEST RUN 

August Newsletter - What's New!!

Upcoming **Webinar**

Aug 29: [SAP Cloud Platform Integration Suite – Monthly Update](#)



Connectivity Tests

Perform connectivity test against the Cloud Connector or test connection via the Cloud Connector to the backend.

[Learn how](#)



Self-service enablement

Enable Cloud Integration service on consumption-based commercial model for SAP Cloud Platform via self-service.

[Learn more](#)

Subscribe Now!!

SAP Cloud Platform Integration Suite

A modular iPaaS to connect the Intelligent Enterprise



Seamlessly integrate anything, anywhere (A2A/B2B) in real time.



Expose your data and processes as APIs. Manage E2E life cycle.



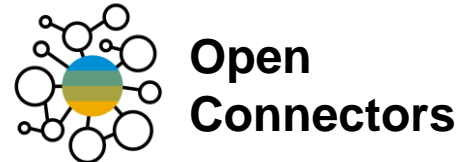
Accelerate implementation and maintenance of B2B scenarios using machine learning.



Jump start integration projects with APIs, packaged integration content and adapters.



Deliver data-driven innovation, unifying enterprise AI and intelligent information management.



Accelerate connectivity to 3rd party applications.

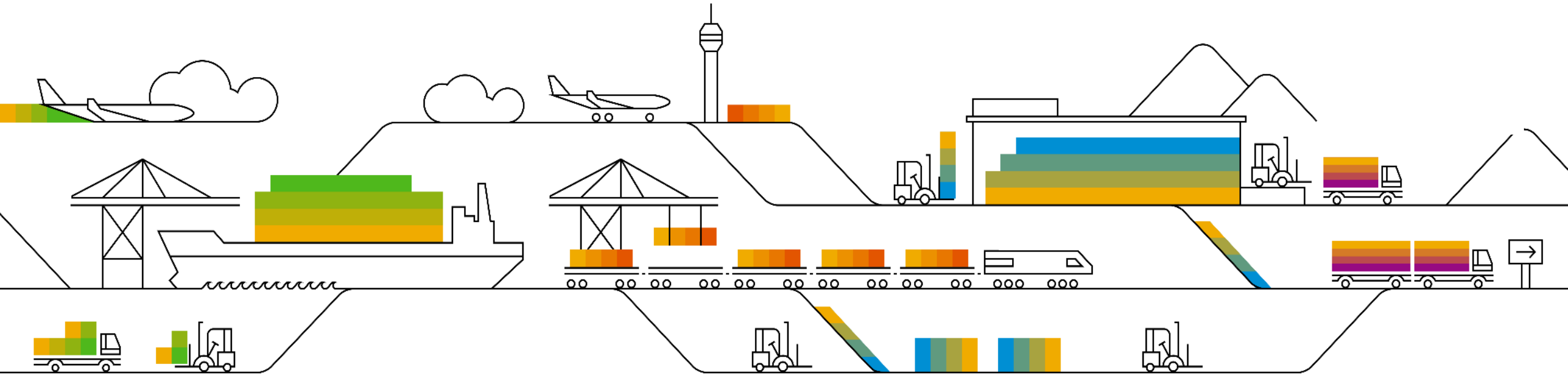


Securely access remote services that run on-premise.



Decouple communication and send messages & events.

SAP Cloud Platform Integration



Agenda



- 2019 Wrap-up
- The future of SAP Cloud Platform Integration



Wrap up

- Trial with self-service enablement
- Multi Cloud availability on AWS and Azure

Commercialization:

- CPEA based pricing with self service
- JMS as à la carte option
- No-touch sales enablement of the Suite service via the SAP store

Connectivity

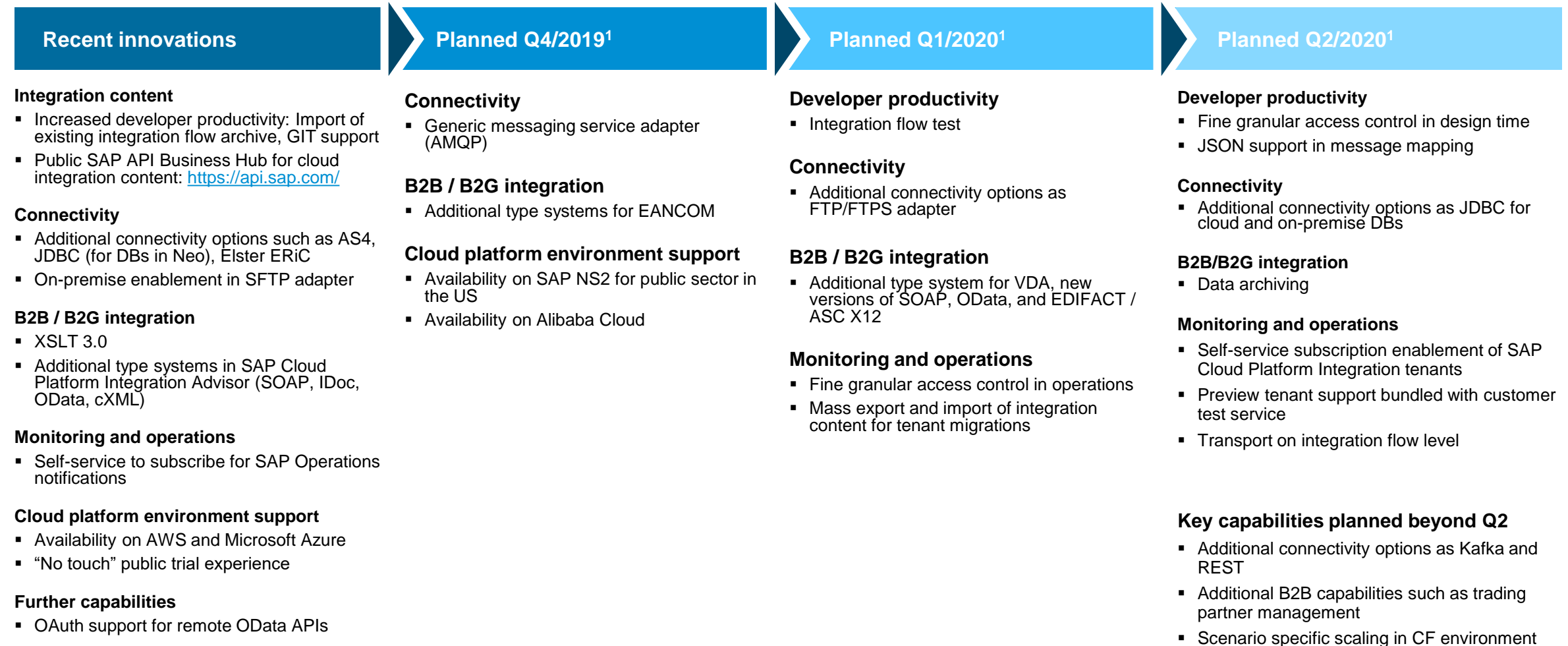
- AMQP - sender and receiver
- Elster receiver adapter
- Open Connector adapter
- AS4
- XI sender adapter – Idempotent Repository
- JMS - Maximum queue capacity 95% of the total queue capacity
- JMS - Self-service – queue quota allocation
- CSRF protection incorporated

Developer productivity

- Transport Management Service released
- Copy-paste adapter configuration
- Autosave/recover unsaved changes – integration flow, scripts
- Context Sensitive help
- Import integration package without overwriting externalized parameters.
- XPath 3.1 and SAXON Enterprise Edition 9.x Support
- Dynamic configuration of process steps and adapter configuration
- Add external reference to WSDL and Schema in Message mapping
- ServiceEndpoints introduced
- Connectivity tests - Cloud Connector

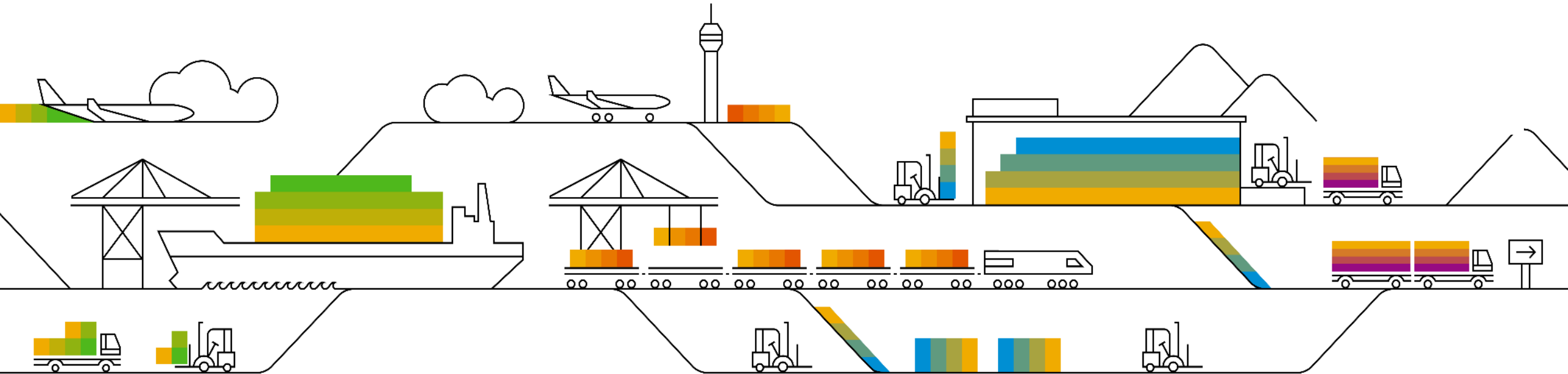
SAP Cloud Platform Integration

Product road map overview



1. This is the current state of planning and may be changed by SAP at any time without notice.

SAP Cloud Platform API Management



Agenda



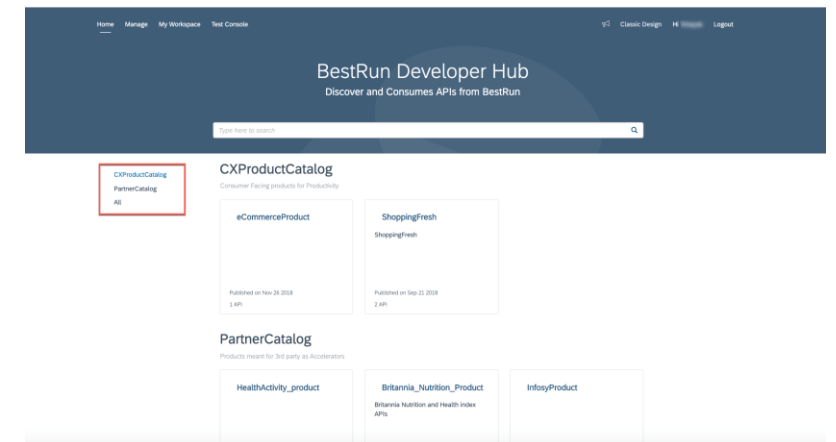
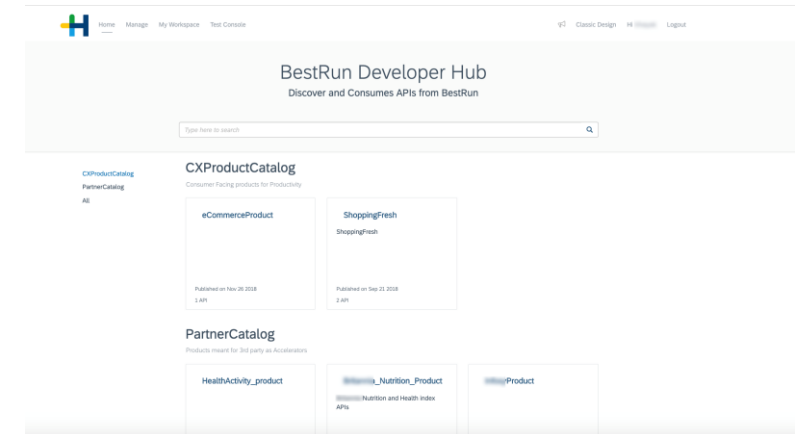
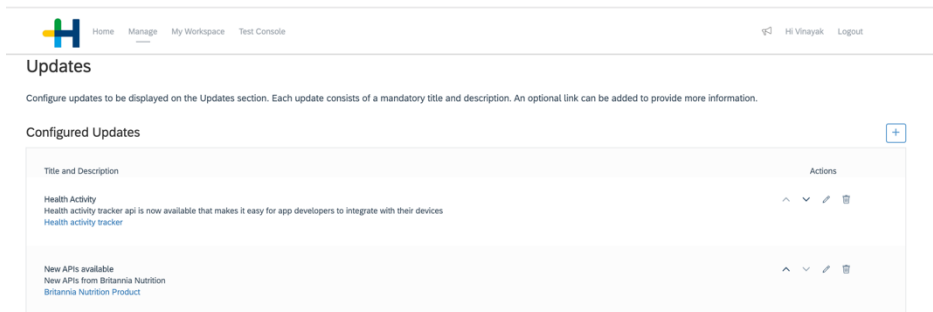
- 2019 Wrap-up
- The roadmap of SAP Cloud Platform API Management



Significant Product enhancements – Developer Portal

Evolved the Developer Portal design into an 'API Business Hub' like design

- Branding and Custom theme support
- Categories to support better navigation
- Configure and Push updates and news snippets



Significant Product enhancements – integration with Open Connectors

Tight Product Integration with SAP Open Connectors in terms of :

- Being able to configure Open Connectors as an API Provider and utilize that during semantic API Creation process

The screenshot shows the 'Add API Provider' configuration page in the SAP API Portal. The provider is named 'OpenConnectorTrial'. The configuration fields are as follows:

- Type:** Open Connectors (dropdown)
- Region:** Europe - Trial (dropdown)
- Host:** api.openconnectors.ext.hanatrial.ondemand.com
- Port:** 443
- Organization Secret:** (password field)
- User Secret:** (password field)

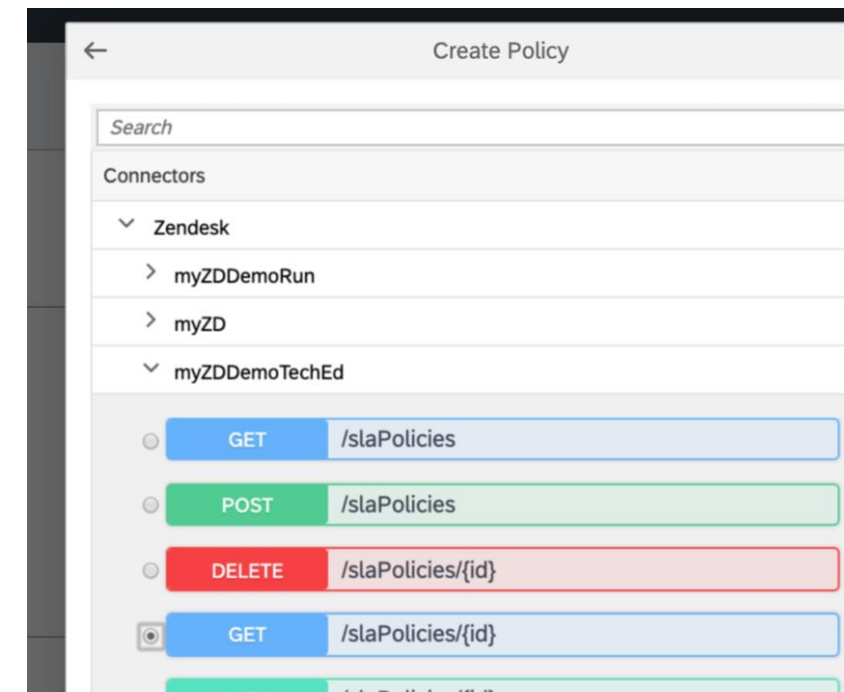
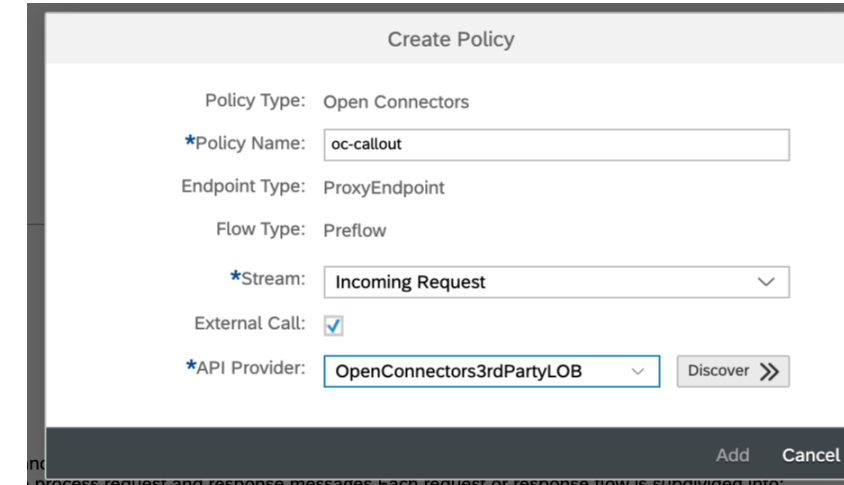
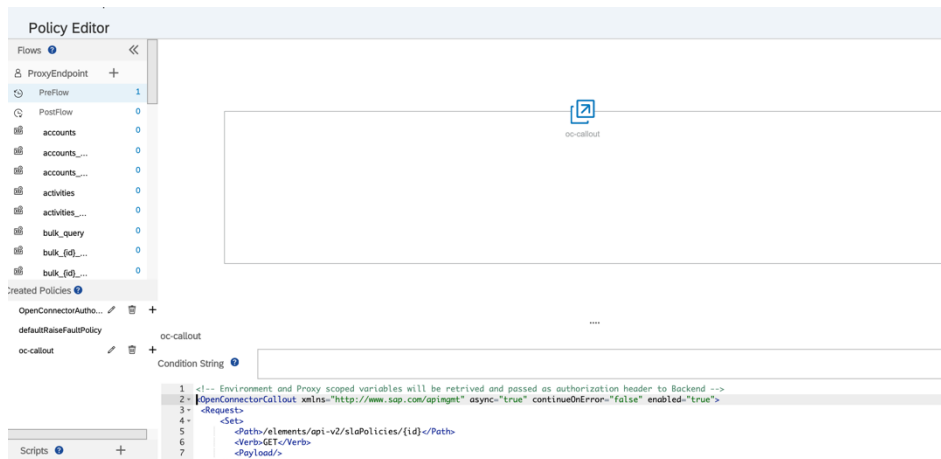
The screenshot shows the 'Create API' dialog in the SAP API Portal. It displays a search bar and a list of providers: Zendesk, HubSpotCRM, and Twilio. Under HubSpotCRM, there are four instances listed:

- myHubDemoRun
- myHubSpotConnector-DEV
- myHubSpot
- myHubSpotTechEd (selected)

Significant Product enhancements – integration with Open Connectors

Tight Product Integration with SAP Open Connectors in terms of :

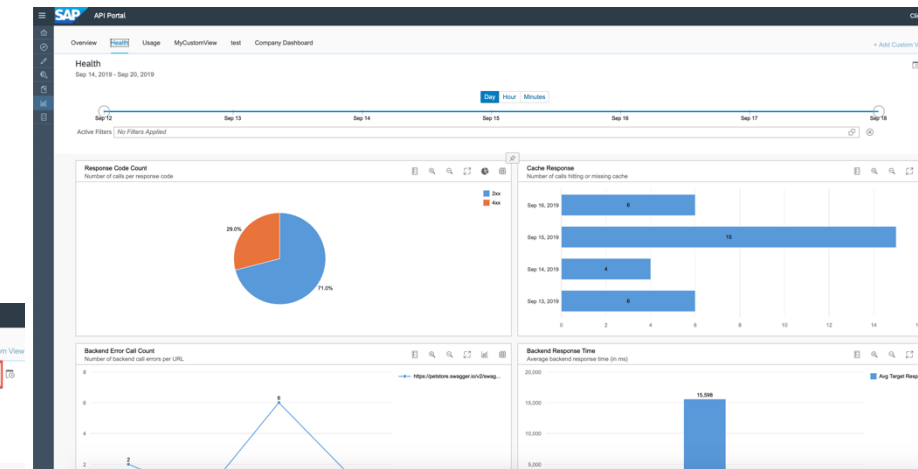
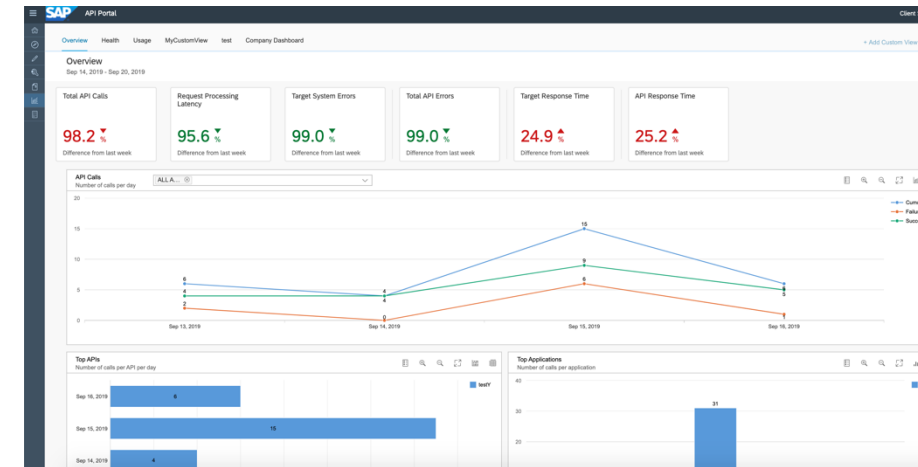
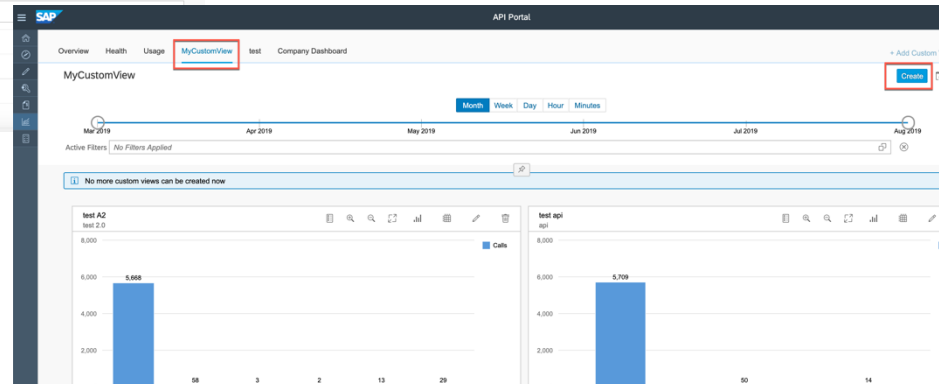
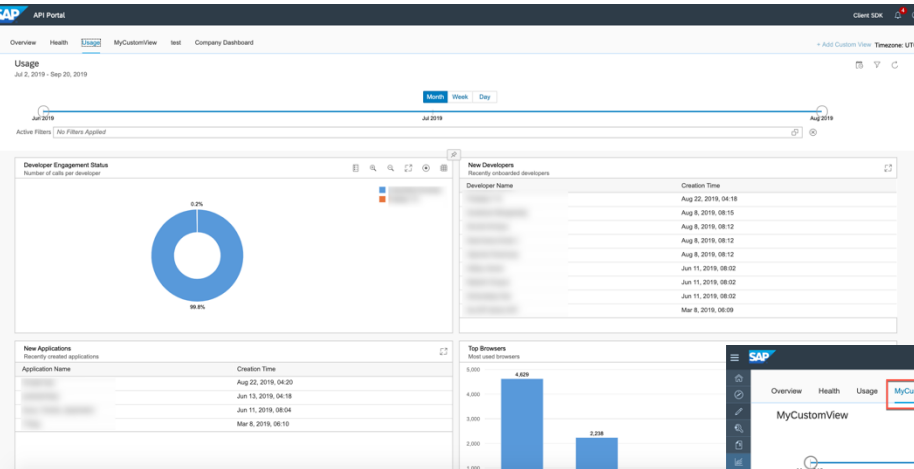
- Being able to configure Open Connectors as an API Provider and utilize the instances during semantic API Creation process
- Ability to natively specify Open Connectors instances as targets for Service Callouts



Significant Product enhancements – Advanced API Analytics

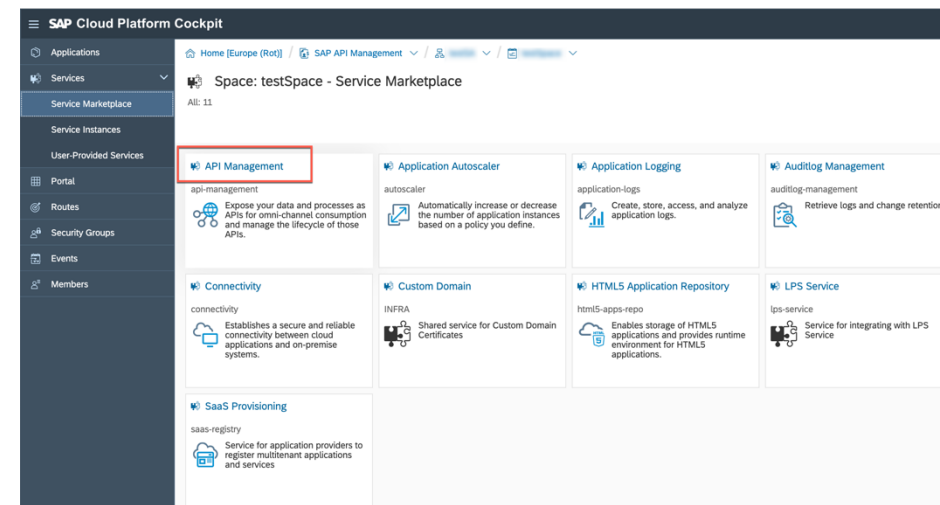
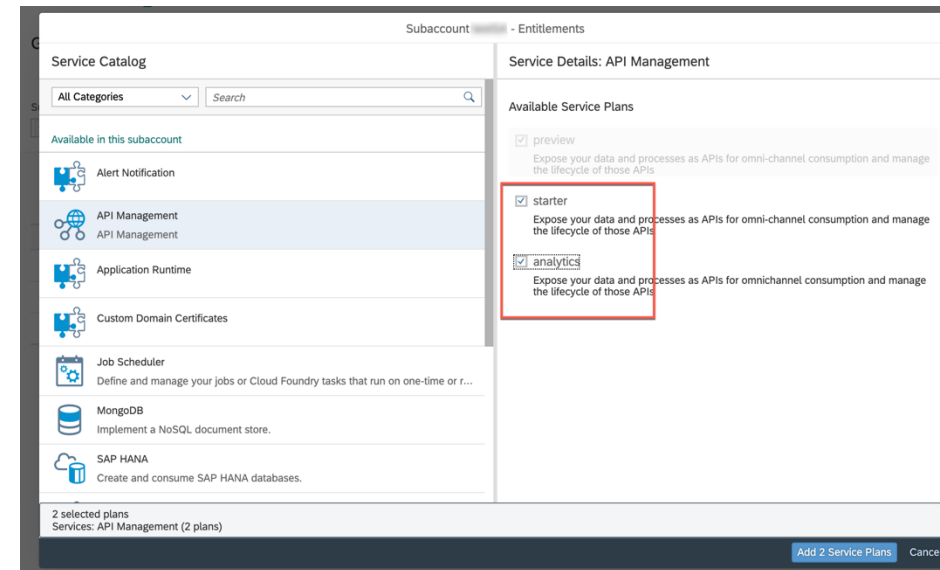
We brought in newer charts and personalized user experience to get Business and Operational insights.

A HANA based Analytics engine makes it possible to get almost real time aggregates



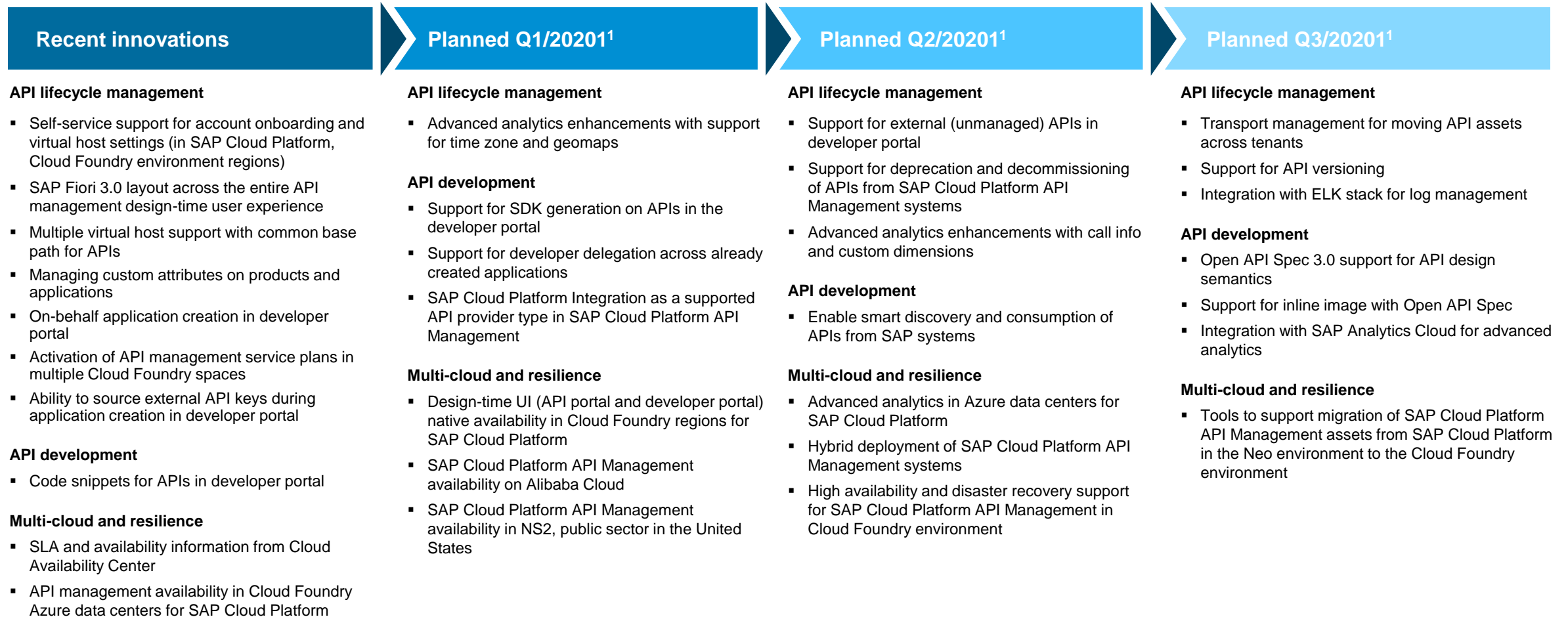
Significant Product enhancements – Multi-cloud support in Cloud Foundry

Activation of API Management tenants in Hyperscaler IaaS platforms (AWS, Azure) from Cloud Foundry accounts via Starter Plan (in addition to the already existing Preview Plan)



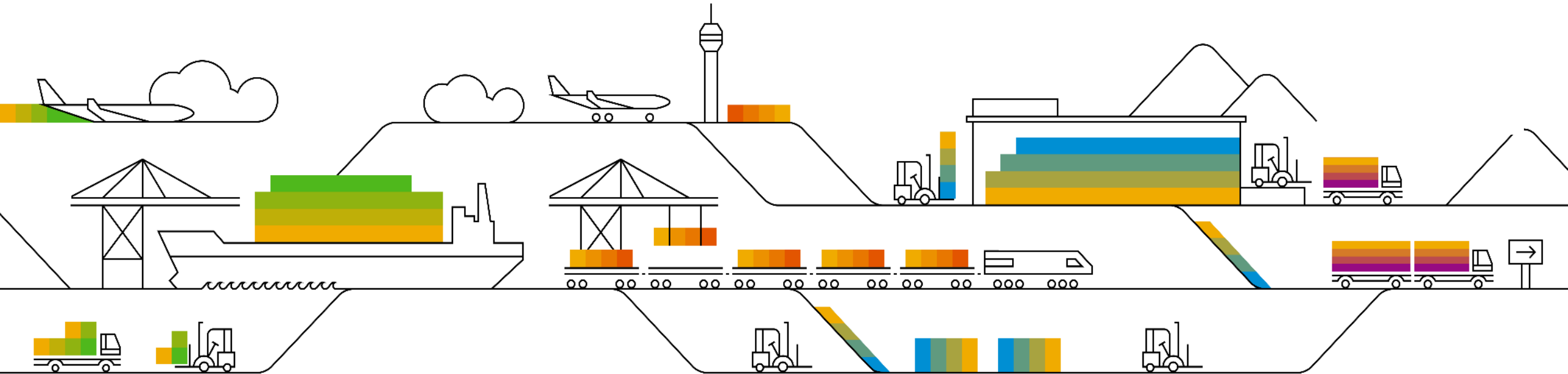
SAP Cloud Platform API Management

Product road map overview – Key innovations



1. This is the current state of planning and may be changed by SAP at any time without notice.

SAP Process Orchestration



SAP Process Orchestration

Upcoming short-term and midterm innovations

SAP Process Orchestration has recently shipped a new test tool that helps our customers automate the testing of their integration scenarios. Using it, they can:

- Reduce business downtime with automated testing for both the migration as well as the regression use case
- Verify that integration scenarios run as before a migration or a system update/upgrade
- Create and maintain test suites and test cases
- Fetch and store test data sets
- Replay messages and verify test results

SAP continues to enhance the feature scope of the test tool with future SP deliveries.



Process Integration Test Tool (PIT) in SAP Process Orchestration

Latest features and outlook

SP15

- Supporting de-central Adapter Engines
- UI for verification completely reworked
- Start run configuration based on test case
- Start verification based on test case

SP16

- Grouping of all jobs belonging to a test run, so called action log
- Automatically define exemptions based on test result
- Definition of test suites incl. test case, test data, and test runs

SP17 Outlook*

- Schedule test runs
- Schedule test runs together with verification jobs
- Save launch configuration on server
- Maintain and schedule test suites in SAPUI5
- Test runs supporting multiple test data

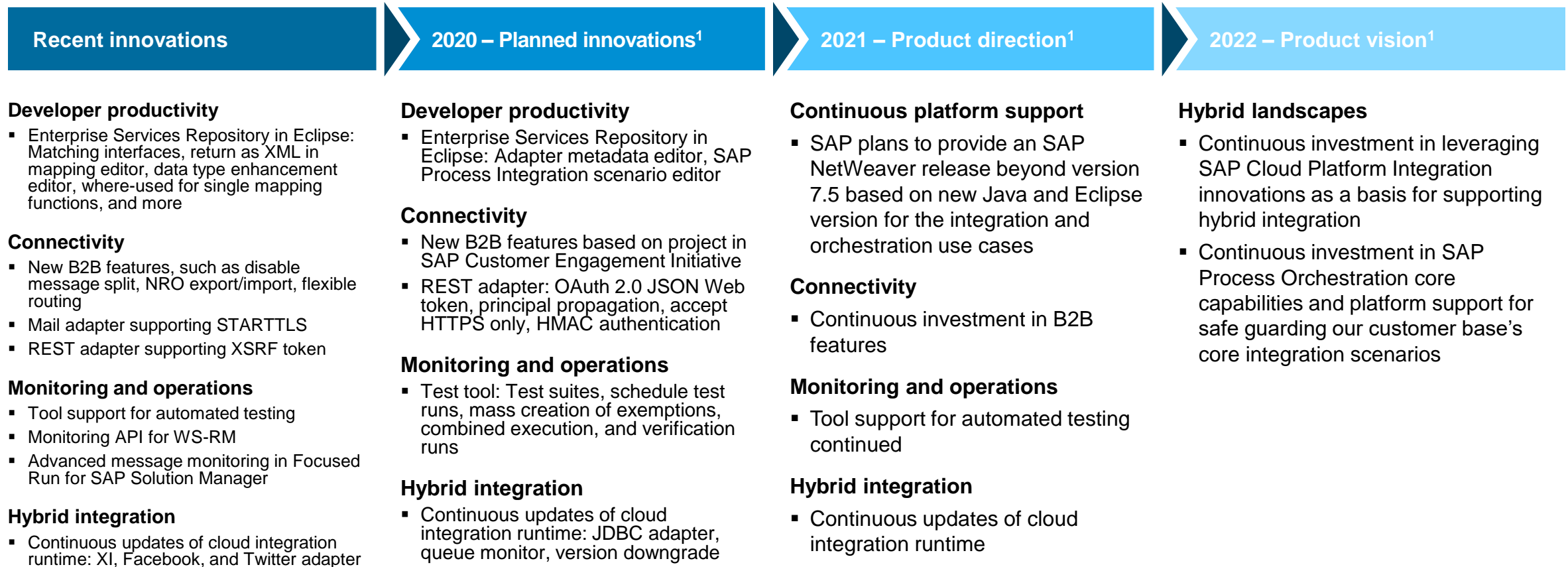
Beyond SP17*

- Read test data automatically from production system
- Read test data from erroneous messages
- Mass creation of exemptions

* This is the current state of planning and may be changed by SAP at any time without notice.

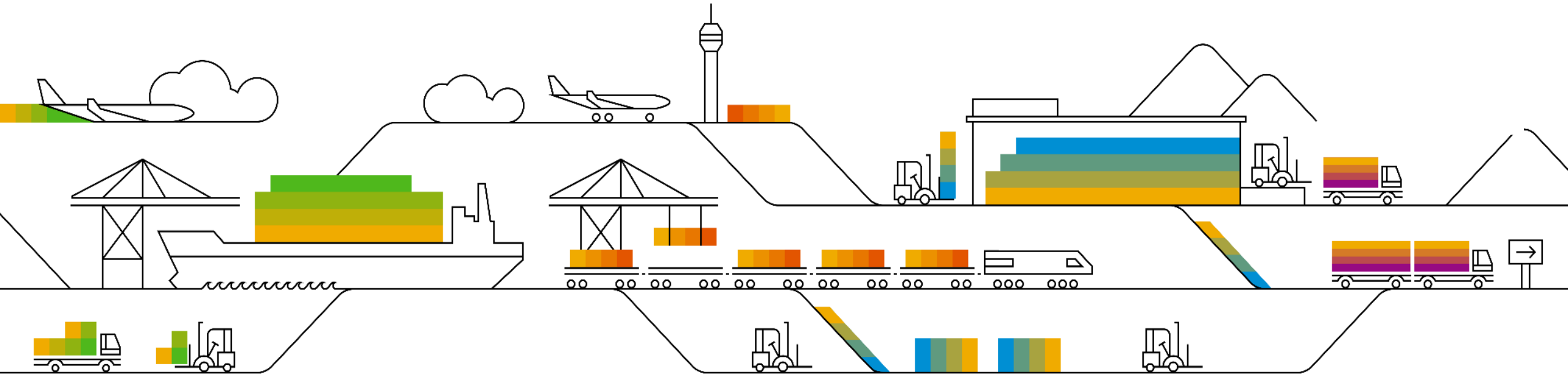
SAP Process Orchestration

Product road map overview – Key innovations



1. This is the current state of planning and may be changed by SAP at any time without notice.

SAP Application Interface Framework



SAP Application Interface Framework

A powerful framework for interface implementation, monitoring, and error handling

Improving governance through interface lifecycle, and providing intuitive and efficient interface monitoring targeted at line-of-business users

Delivery channels

- Integral part of SAP S/4HANA and SAP S/4HANA Cloud
- Shipped as an add-on for SAP Business Suite

Interface implementation (design time)

- Interface implementation mainly through customizing menus
- Easy access to relevant data or functions of the underlying SAP application
- Reuse of interface components (such as checks, mappings, actions)
- Support for variants of interfaces (exceptions or additional steps)
- Independent implementation and testing of interface components and interface variants

Monitoring and error handling (runtime and operations)

- Business user monitoring (power user)
- Customizable authorizations for interface access
- Overview of interface status



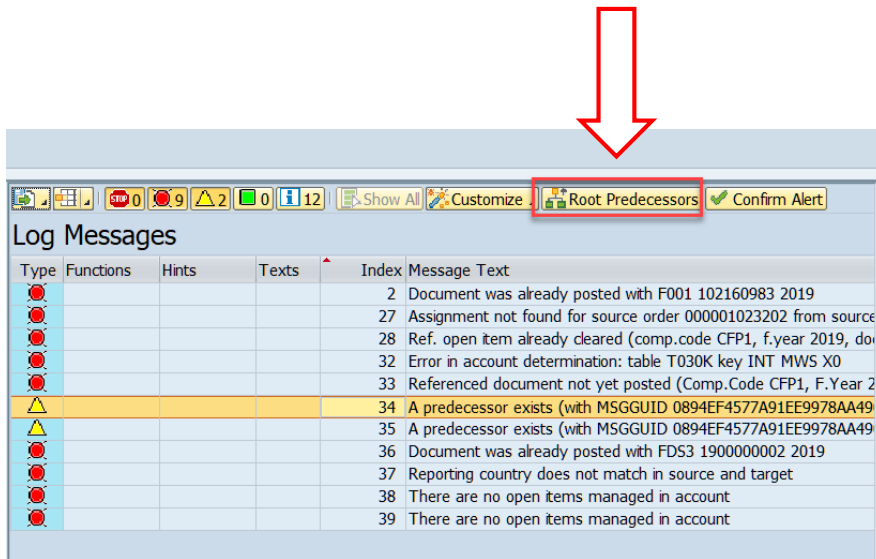
Improvement addressing lots of *In Process* messages

Sub status for *In Process* messages

- In Process
- Waiting to be processed
- Auto reprocessing
- Blocked by predecessor
- Error in job processing

Error Handling (200)			
Technical Mode Icon Help Last Transfer Restrict Alert inbox			
Read Restart Cancel			
Data Messages	Number	Key Fl...	Ke...
SUB_ST Sub Status Testing (17)			
STS_MGR_1/1.0.0 Status Mangement case 1 (2)			
• 1: 02.05.2019 09:26:15	FA163E90372D1EE99B95723AA8781F5D		
• 2: 02.05.2019 09:26:06	FA163E90372D1EE99B957183B886FF5D		
STS_MGR_2/1.0.0 Status Mangement case 2 (1)			
• 3: 02.05.2019 09:28:38	FA163E90372D1EE99B957CDCE27E5F78		
STS_MGR_3/1.0.0 Status Mangement case 3 (5)			
• 4: 02.05.2019 09:29:44	FA163E90372D1EE99B9581B5B1855F79		
• 5: 02.05.2019 09:29:44	FA163E90372D1EE99B9581B5B1857F79		
• 6: 02.05.2019 09:29:44	FA163E90372D1EE99B9581B5B1859F79		
• 7: 02.05.2019 09:29:44	FA163E90372D1EE99B9581B5B185BF79		
• 8: 02.05.2019 09:29:44	FA163E90372D1EE99B9581B5B185DF79		
STS_MGR_4/1.0.0 Status Mangement case 4 (6)			
QUEUE1 (6)		Char20	Char20
• 9: 02.05.2019 09:31:43	FA163E90372D1EE99B958AA71CE45F96	QUEUE1	6
• 10: 02.05.2019 09:31:42	FA163E90372D1EE99B958A85B84C7F96	QUEUE1	2
• 11: 02.05.2019 09:31:42	FA163E90372D1EE99B958A85B84C9F96	QUEUE1	3
• 12: 02.05.2019 09:31:42	FA163E90372D1EE99B958A85B84CBF96	QUEUE1	4
• 13: 02.05.2019 09:31:42	FA163E90372D1EE99B958A85B84CDF96	QUEUE1	5
• 14: 02.05.2019 09:31:41	FA163E90372D1EE99B958A85B84C5F96	QUEUE1	1
STS_MGR_5/1.0.0 Status Mangement case 5 (1)			
• 15: 02.05.2019 09:32:44	FA163E90372D1EE99B958F3AAFBA9F98		
STS_MGR_6/1.0.0 Status Mangement case 6 (1)			
• 16: 02.05.2019 09:33:18	FA163E90372D1EE99B9591AC8EC2FF9A		
STS_MGR_7/1.0.0 Status Mangement case 1 (1)			
• 17: 02.05.2019 09:33:12	FA163E90372D1EE99B9591415323FF9A		

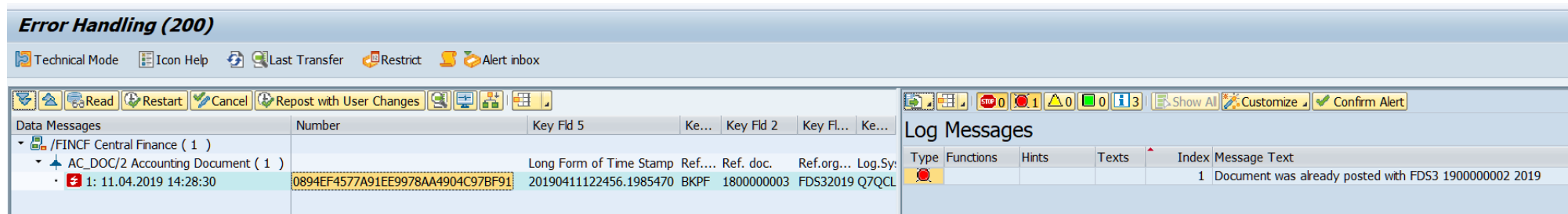
Improvement addressing *blocked* messages



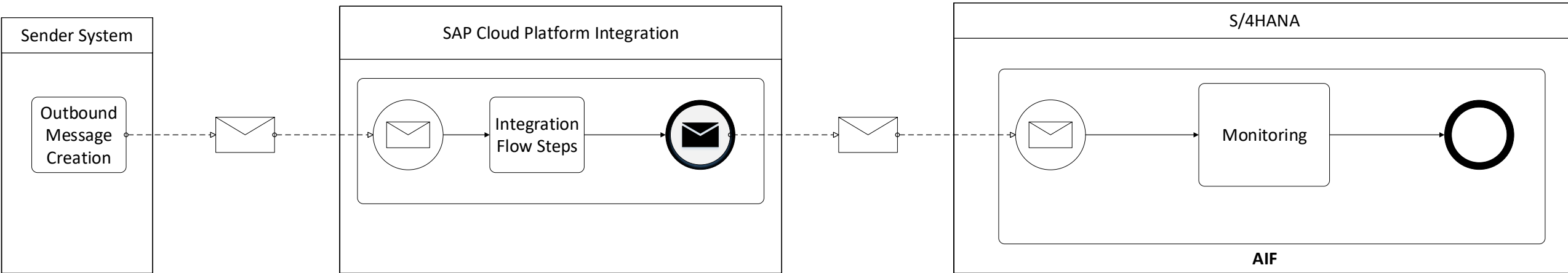
New: Navigate to root predecessor

Action:

- Solve the business error and re-process Message in /AIF/ERR
- In case of “Document already posted” errors, you can cancel such message after double checking
- The successor messages will be automatic triggered and processed



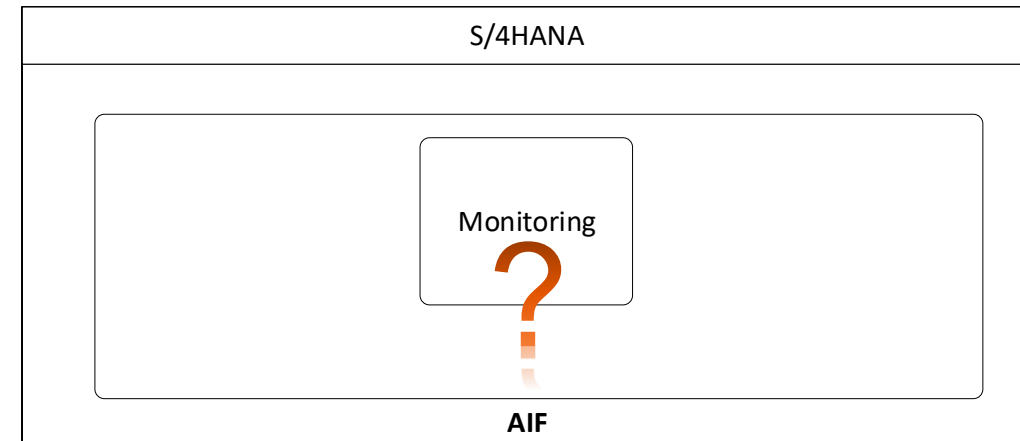
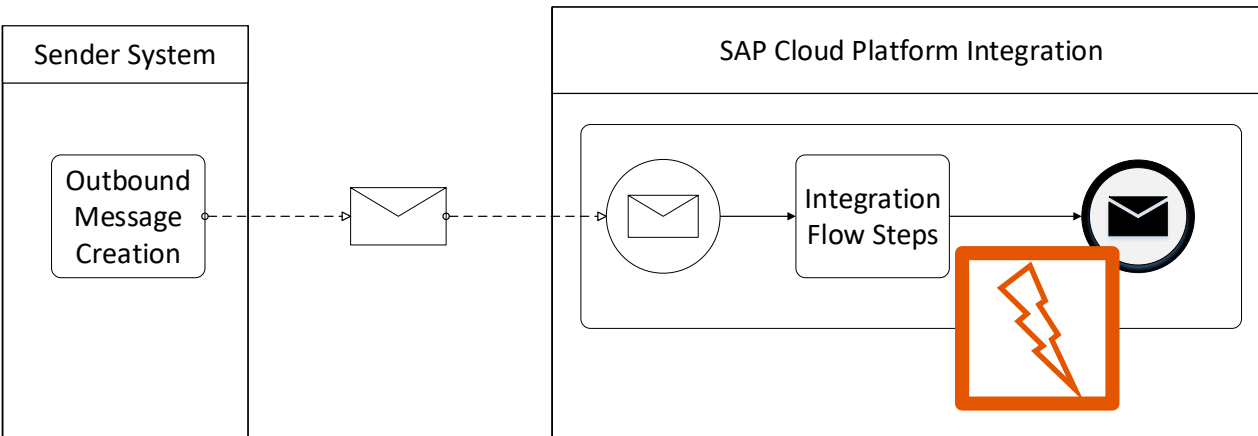
Scenario: SAP CPI is used as middleware to send messages to S/4HANA



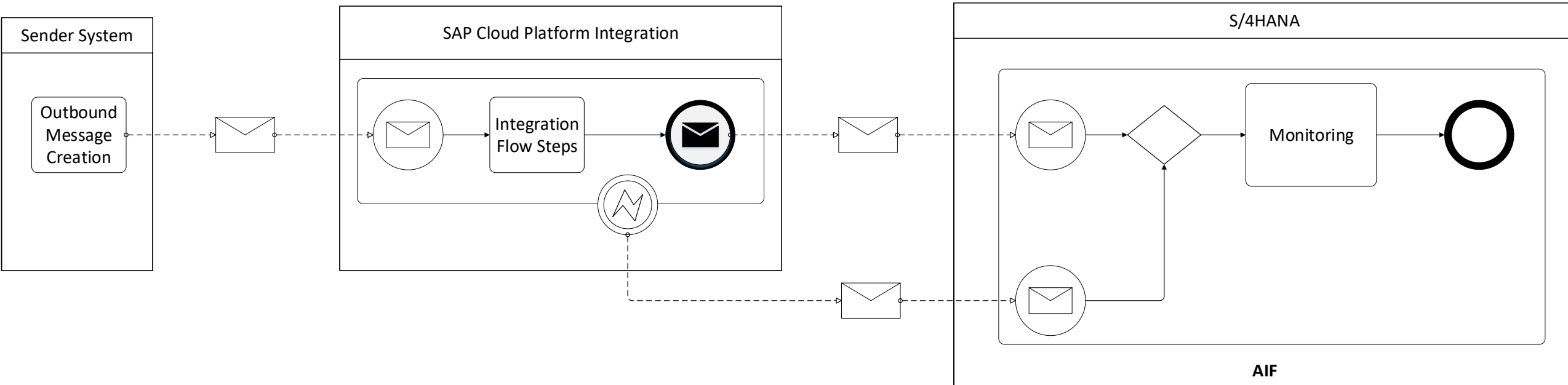
SAP Cloud Platform Integration

- Orchestration of business processes and integration of data in real-time
- Connects cloud applications with other SAP and non-SAP cloud and on-premise apps

Problem: Errors in SAP CPI are not monitored in SAP AIF



Approach: Error Forwarding from SAP CPI to SAP AIF



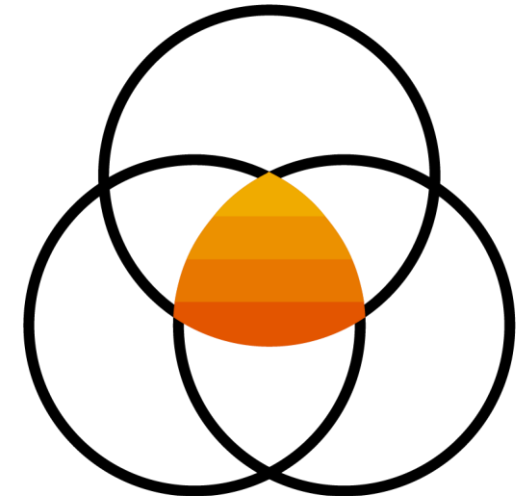
Customer Engagement Initiative Project in 2019

Monitoring and error handling in SAP S/4HANA and SAP S/4HANA Cloud

As SAP Application Interface Framework has become the de facto default monitoring and error handling tool in SAP S/4HANA and SAP S/4HANA Cloud, its adoption is increasing.

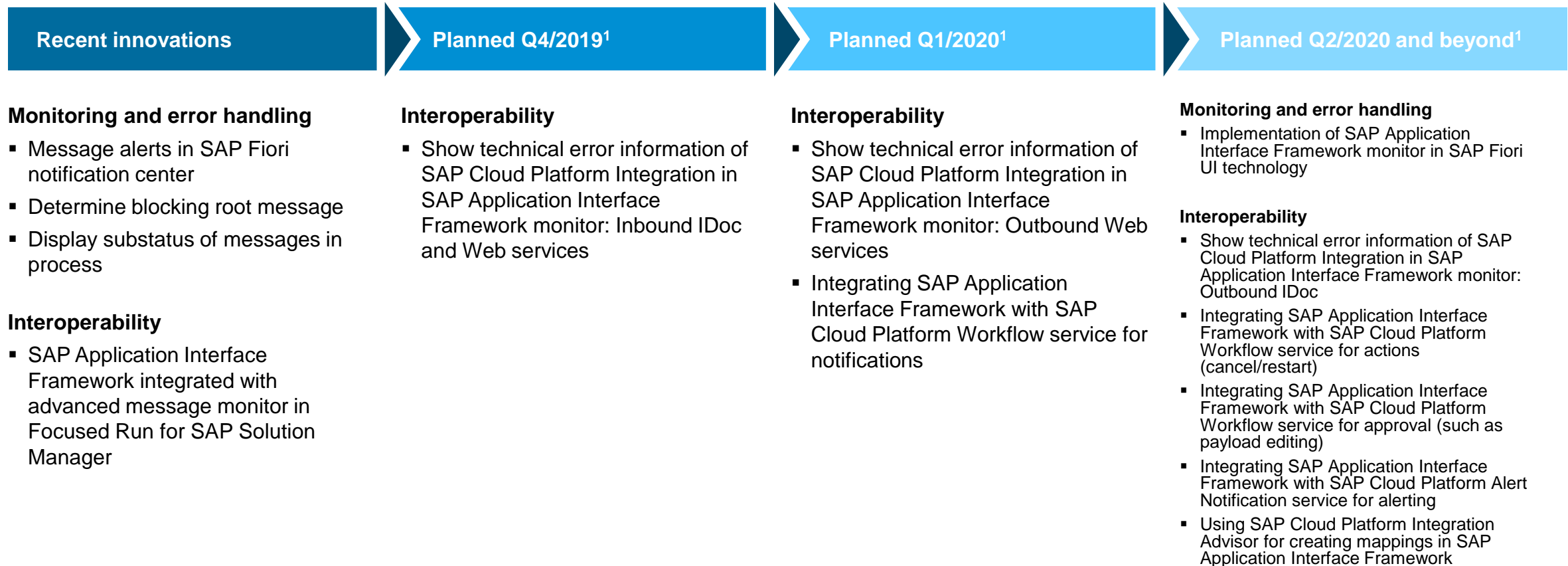
With the growing usage in SAP S/4HANA and SAP S/4HANA Cloud, new requirements towards the framework have come up, and hence SAP plans to invest in the following topic areas:

- Fiori UI for message monitoring incl. monitoring of serialization scenarios
- Fiori UI for customizing & configuration of the application interfaces
- Monitoring in the context of SAP Central Finance
- Interoperability between AIF & SAP Cloud Platform Integration
- Interoperability between AIF & SAP Cloud Platform Workflow Services



SAP Application Interface Framework

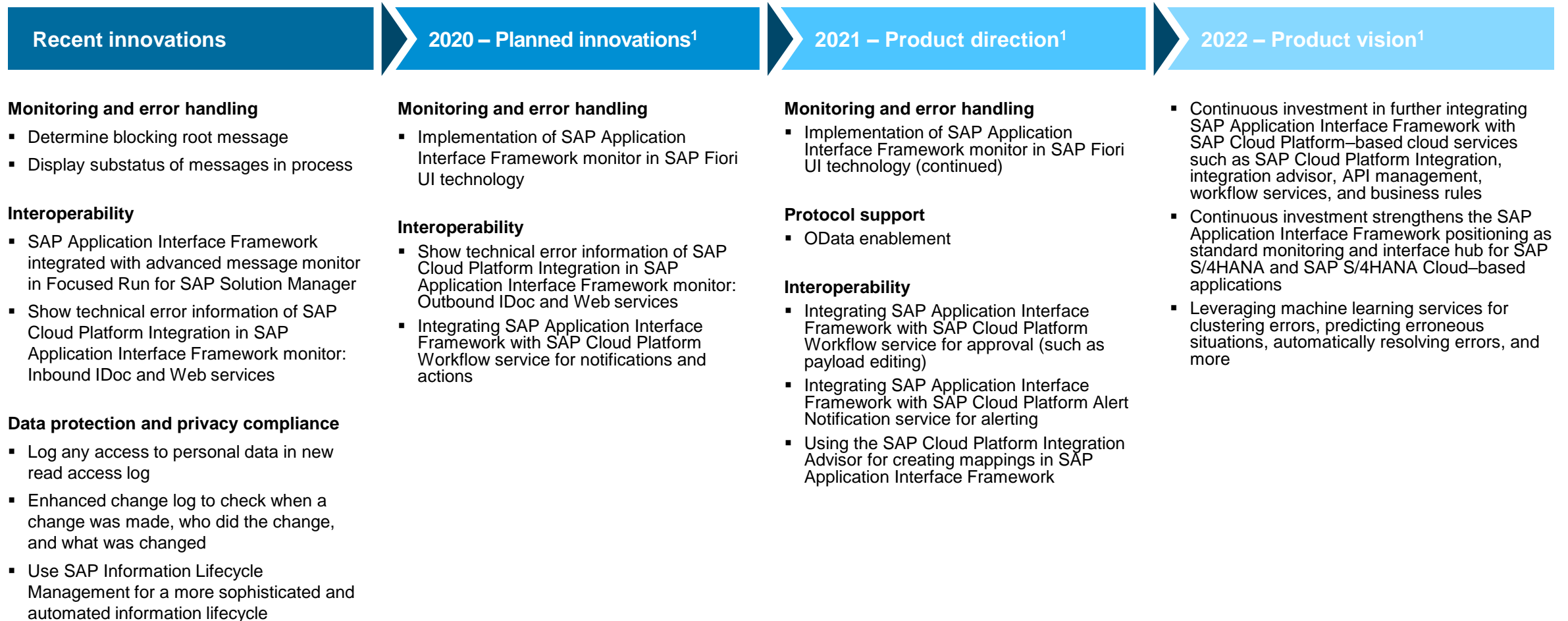
Product road map overview for SAP S/4HANA Cloud



1. This is the current state of planning and may be changed by SAP at any time without notice.

SAP Application Interface Framework

Product road map overview for SAP S/4HANA



1. This is the current state of planning and may be changed by SAP at any time without notice.