



# The Initial Integration Setup of Scenarios in Hybrid Landscapes

## Cloud Integration Automation Service

Stefan Jakobi, Product Manager  
SAP Cloud & Lifecycle Management

PUBLIC

# Disclaimer

The information in this presentation is confidential and proprietary to SAP and may not be disclosed without the permission of SAP. Except for your obligation to protect confidential information, this presentation is not subject to your license agreement or any other service or subscription agreement with SAP. SAP has no obligation to pursue any course of business outlined in this presentation or any related document, or to develop or release any functionality mentioned therein.

This presentation, or any related document and SAP's strategy and possible future developments, products and or platforms directions and functionality are all subject to change and may be changed by SAP at any time for any reason without notice. The information in this presentation is not a commitment, promise or legal obligation to deliver any material, code or functionality. This presentation is provided without a warranty of any kind, either express or implied, including but not limited to, the implied warranties of merchantability, fitness for a particular purpose, or non-infringement. This presentation is for informational purposes and may not be incorporated into a contract. SAP assumes no responsibility for errors or omissions in this presentation, except if such damages were caused by SAP's intentional or gross negligence.

All forward-looking statements are subject to various risks and uncertainties that could cause actual results to differ materially from expectations. Readers are cautioned not to place undue reliance on these forward-looking statements, which speak only as of their dates, and they should not be relied upon in making purchasing decisions.

# Agenda

## Intelligent Enterprise

- Integration is Key

## Business Scenario Employee Central

- SAP SuccessFactors Employee Central Integration to SAP S/4HANA Cloud

## Integration Challenges

- Without and with Cloud Integration Automation Service

## Overview Cloud Integration Automation Service

- Fact Sheet, Building blogs and Step-by-Step

## Demo of Cloud Integration Automation Service

- SAP SuccessFactors Employee Central Integration to SAP S/4HANA Cloud with Cloud Integration Automation Service

## Outlook and Summary

- More automated tasks
- Available Integration Scenarios
- Benefits and Prerequisites
- Links to further Information





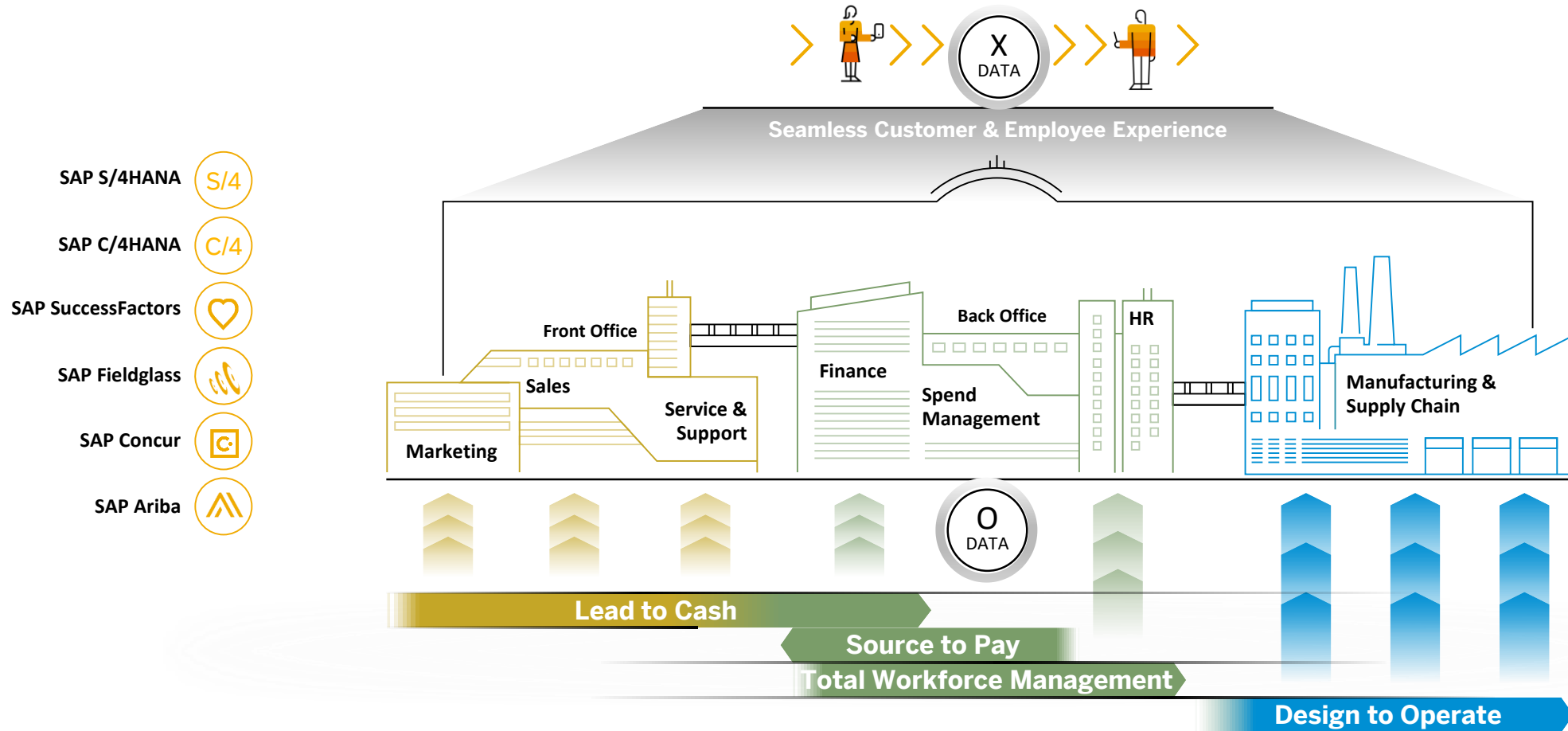
# Intelligent Enterprise

## Integration is Key



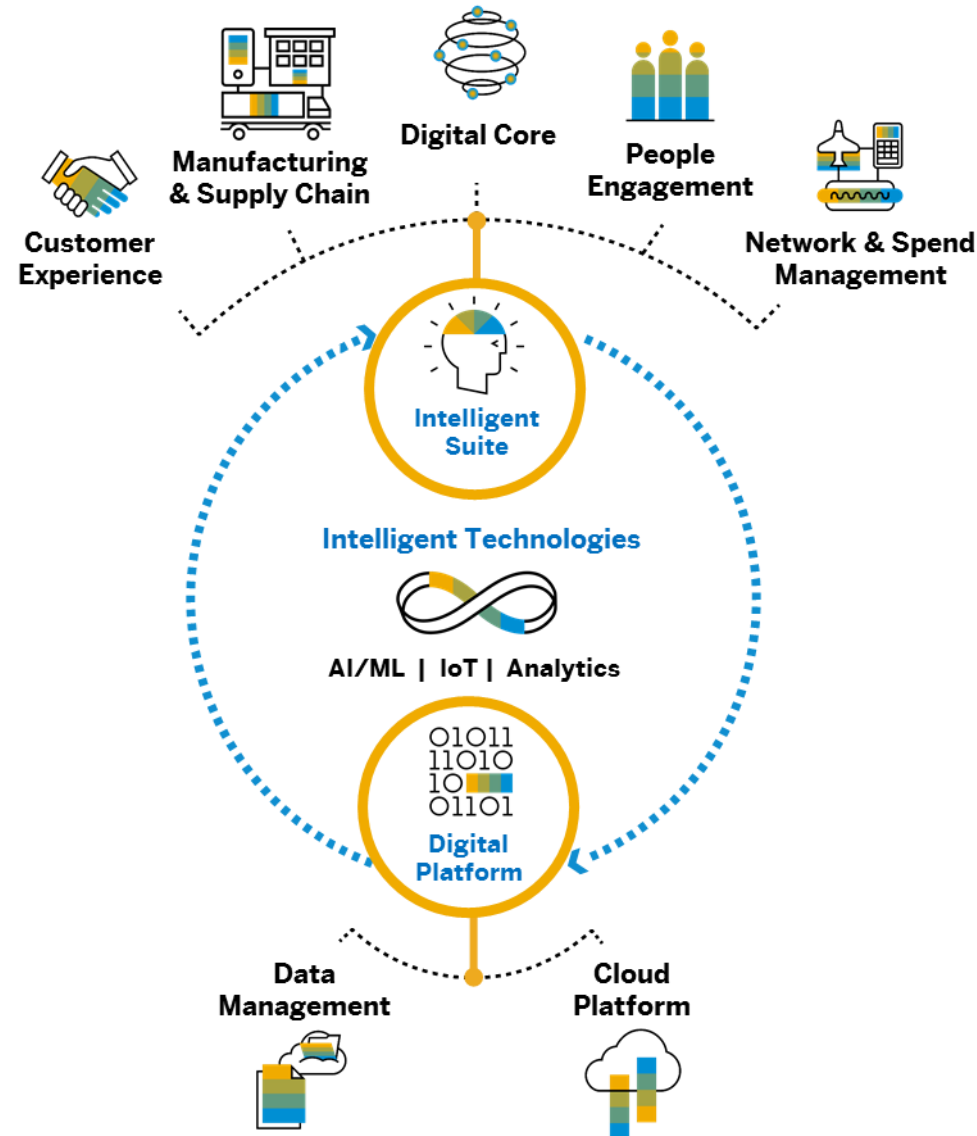
# The Intelligent Enterprise

Integrated **end-to-end business processes** for the entire value chain



# SAP's vision of the Intelligent Enterprise

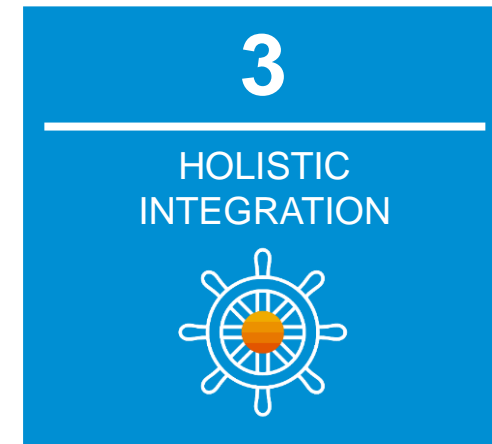
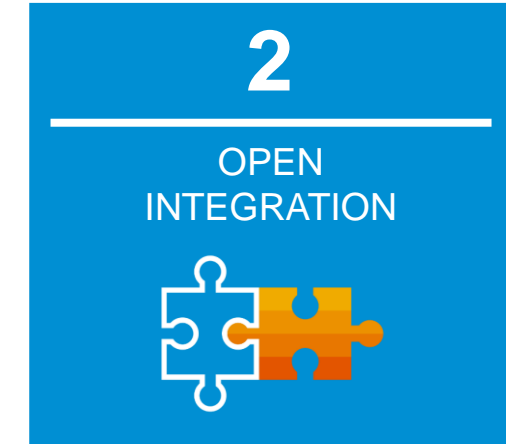
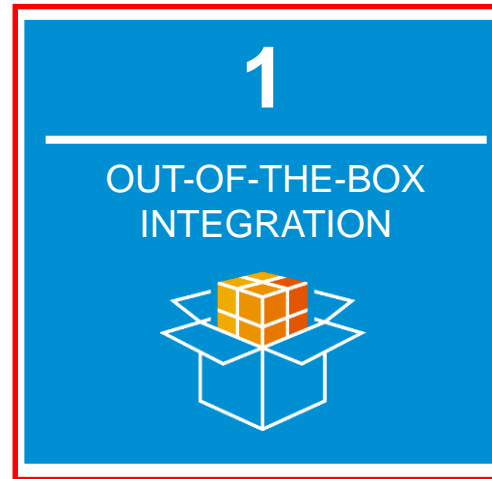
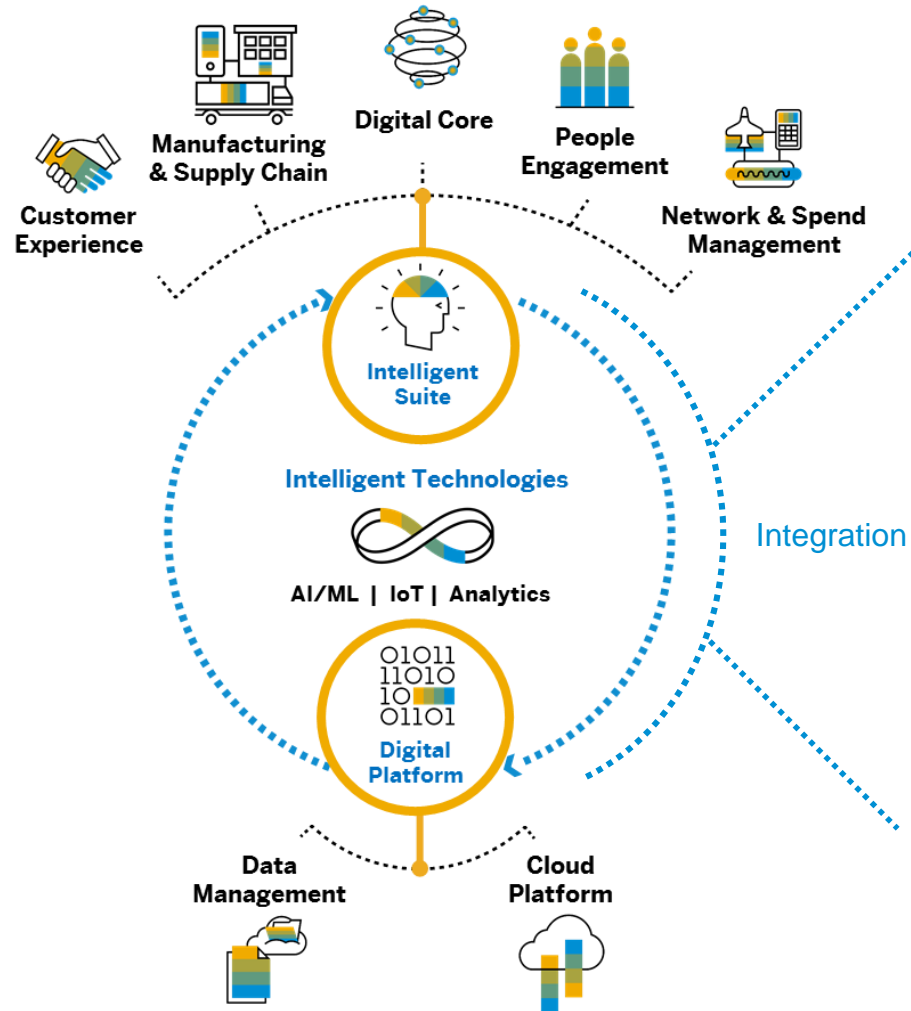
THE INTELLIGENT ENTERPRISE  
features **3 KEY COMPONENTS**:



- 1 Intelligent Suite
- 2 Digital Platform
- 3 Intelligent Technologies

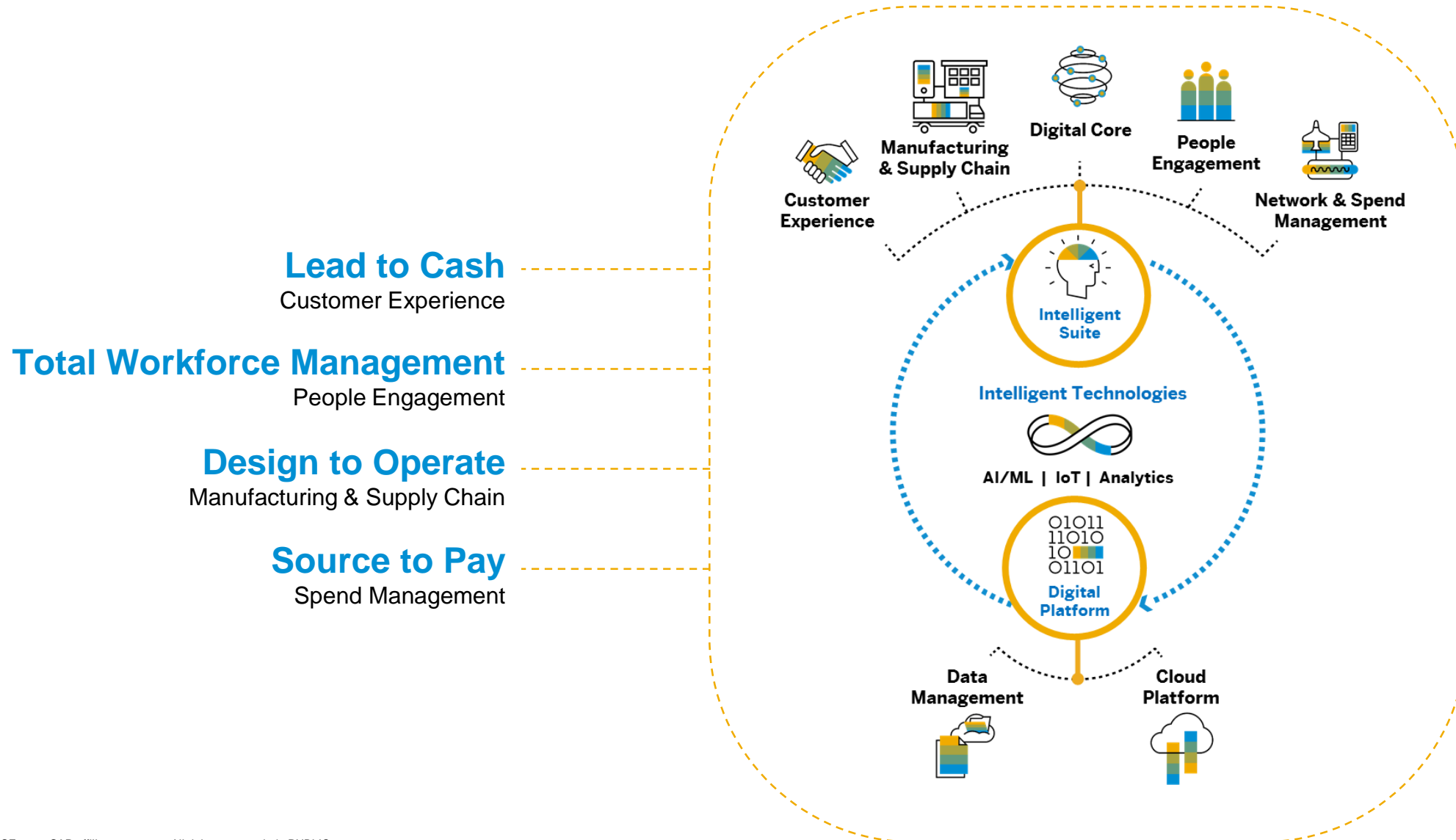
# SAP's integration strategy for the Intelligent Enterprise

Mission: Intelligent Enterprise is an integrated enterprise



# Intelligent Enterprise

## Key End-to-End Processes

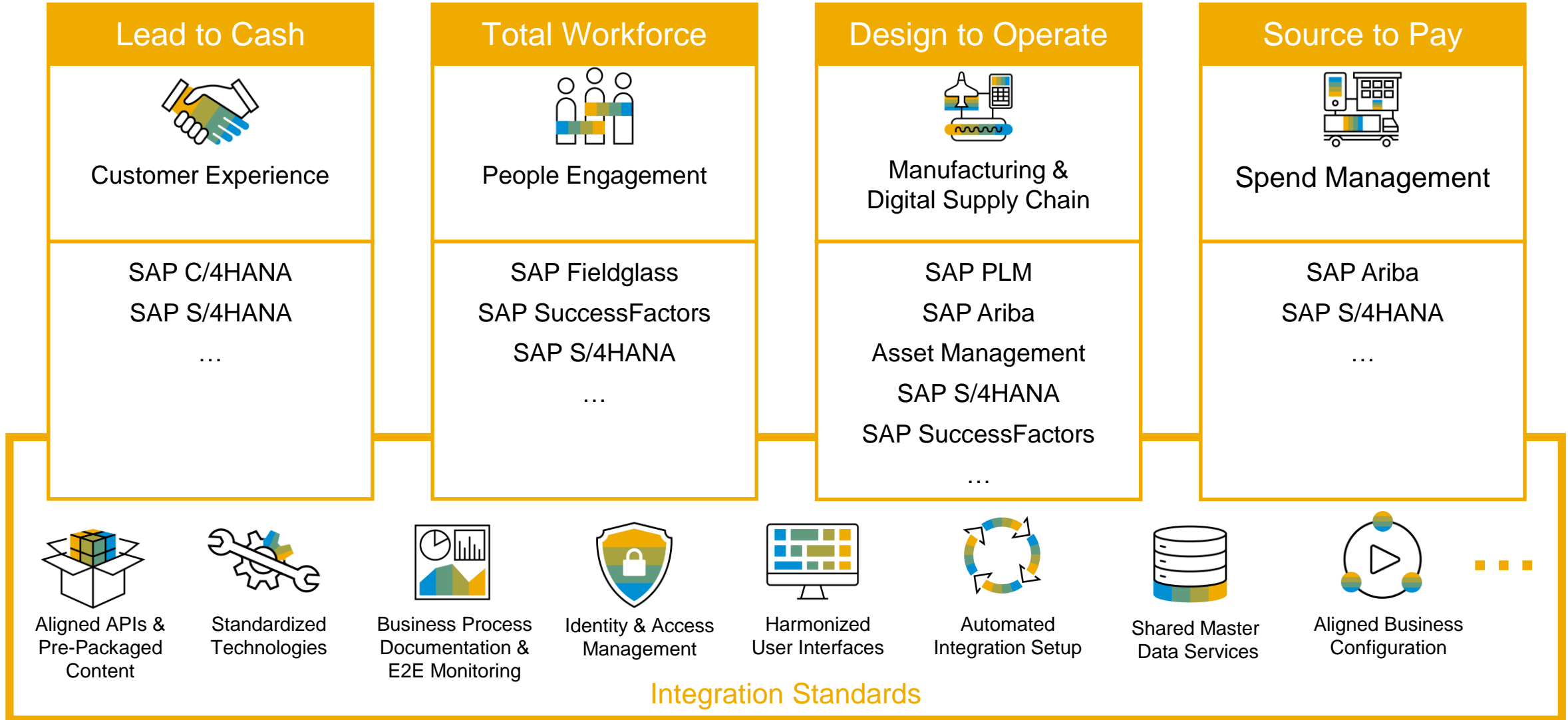




# SAP Integration DNA for the Intelligent Suite

## Stepwise Adoption of Integration Standards Along Key Scenarios

Unified  
Integration



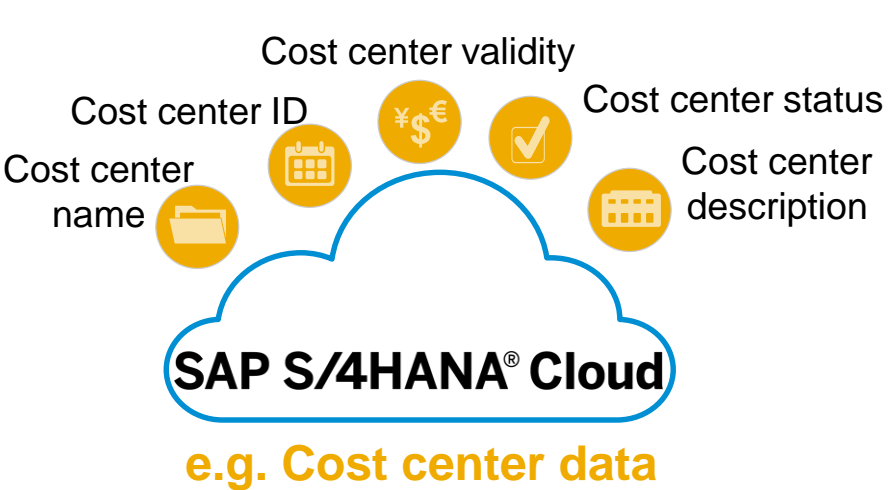
# Business Scenario Employee Central

SAP SuccessFactors Employee Central Integration to SAP S/4HANA Cloud



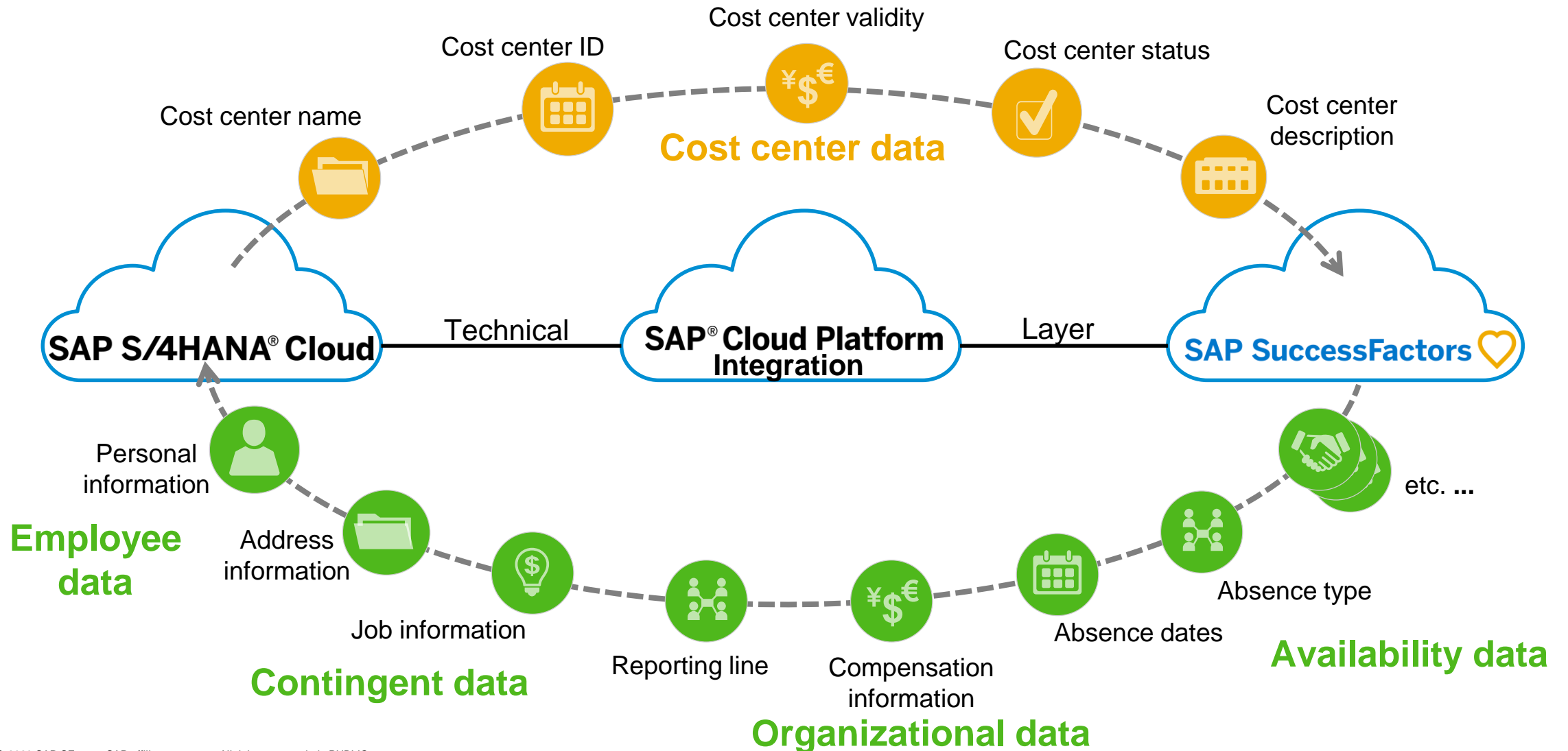
# Example: Business Scenario Employee Central

## SAP SuccessFactors Employee Central Integration to SAP S/4HANA Cloud



# Example: Business Scenario Employee Central

## Sharing of data



# Example: Business Scenario Employee Central

## Cost Center Replication

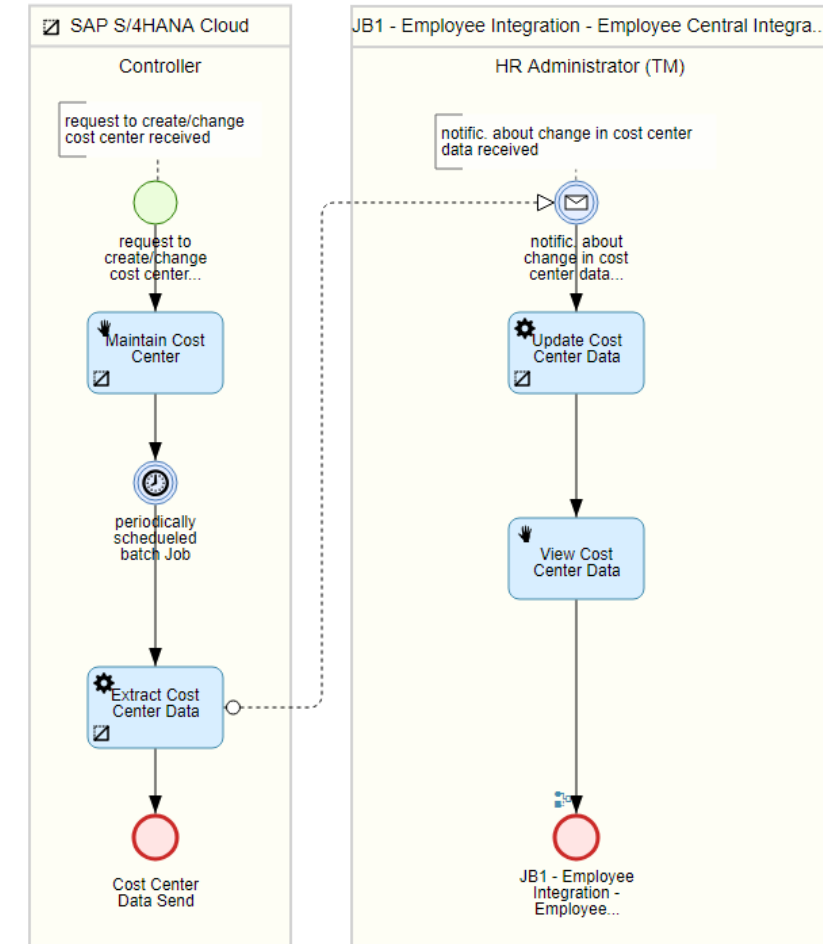
### Other processes (with similar functionality):

- Employee Hiring and Master Data Maintenance
- Employee Termination
- Employee Rehiring and Master Data Maintenance
- Contingent Worker Master Data Maintenance
- Employee Photo Replication
- ...

### Employee Integration - Employee Central Integration (JB1)

This scope item supports the following processes:

#### 01 - Cost Center Replication from SAP S/4HANA to SuccessFactors Employee Central (DRF)



[https://support.sap.com/content/dam/SAAP/Sol\\_Pack/Library/ProcessDiagrams/JB1\\_S4CLD1811\\_Process\\_Overview\\_EN\\_XX.htm](https://support.sap.com/content/dam/SAAP/Sol_Pack/Library/ProcessDiagrams/JB1_S4CLD1811_Process_Overview_EN_XX.htm)



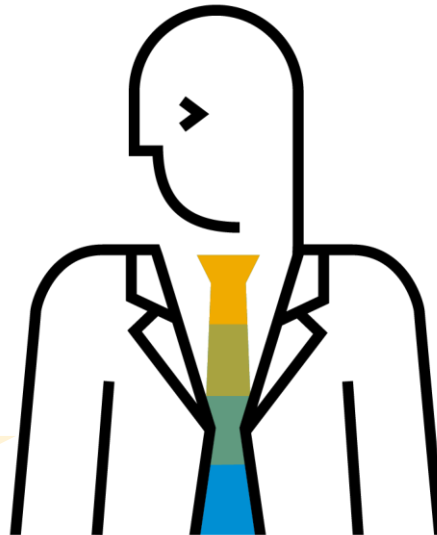
# Integration Challenges

Without and with Cloud Integration Automation Service



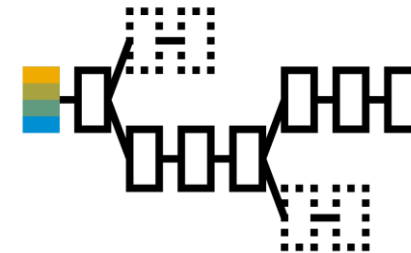
# Integration Challenge

- start in SAP Support Portal
- find the right documentation
- find the right experts and setup a team
- make a plan
- experts work through the documents



## Cloud Integration Automation Service:

- Guided integration workflow
  - partially automated
  - standardized
  - role based
  - integrated



Help SAP Portal: [https://help.sap.com/viewer/p/SAP\\_SUCCESSFACTORS\\_EMPLOYEE\\_CENTRAL\\_INTEGRATION\\_TO\\_SAP\\_BUSINESS\\_SUITE](https://help.sap.com/viewer/p/SAP_SUCCESSFACTORS_EMPLOYEE_CENTRAL_INTEGRATION_TO_SAP_BUSINESS_SUITE)

Set-up guide: [https://support.sap.com/content/dam/SAAP/Sol\\_Pack/Library/Setup/JB1\\_S4CLD1808\\_Set-Up\\_EN\\_XX.pdf](https://support.sap.com/content/dam/SAAP/Sol_Pack/Library/Setup/JB1_S4CLD1808_Set-Up_EN_XX.pdf)



# Overview Cloud Integration Automation Service

## Fact Sheet, Building blogs and Step-by-Step



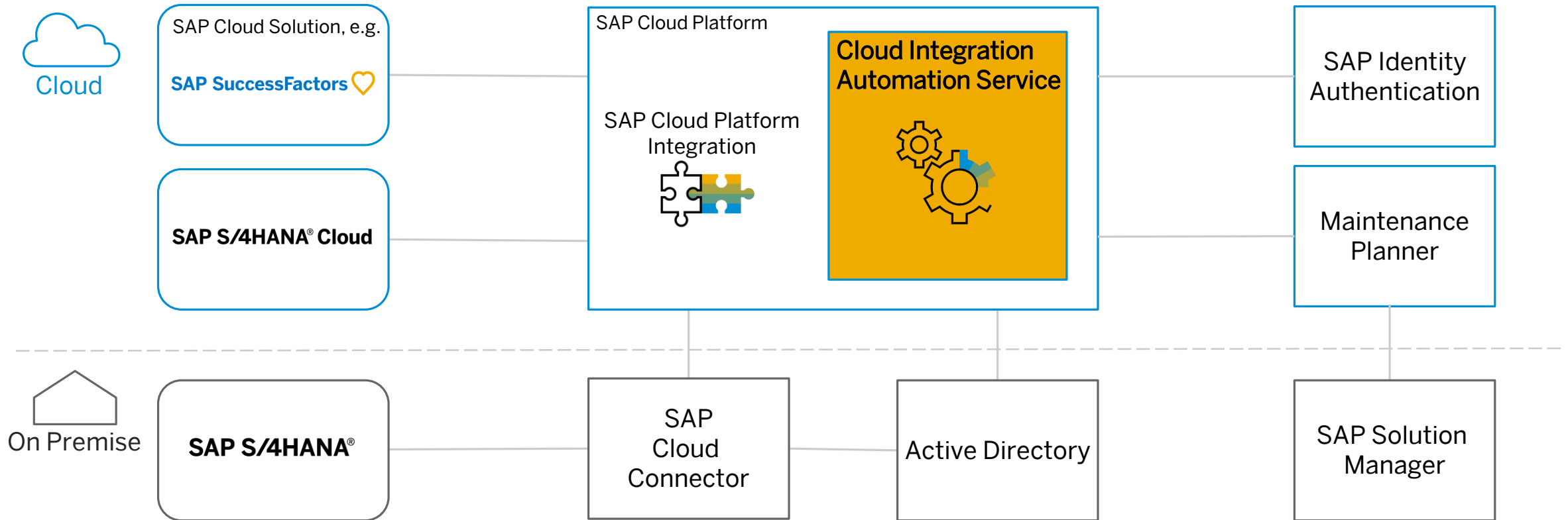
# Cloud Integration Automation Service: Fact Sheet

**Cloud Integration Automation Service** is a framework that provides task based configuration procedures with automation

## Benefits for Customers (and Cloud Providers, Partners, Consultants etc.):

- **Cloud Integration Automation Service** eases the technical configuration → reduce the manual work that comes with it
- It offers role based execution → integration tasks are assigned to the right person based on role assignments
- It offers integrated parameter management → data can be entered once and reused throughout the workflow
- It provides system landscape information → available as drop down list from known customer SAP systems
- It allows traceability of activity → information on who did what steps in the integration

# Cloud Integration Automation Service: Building Blocks





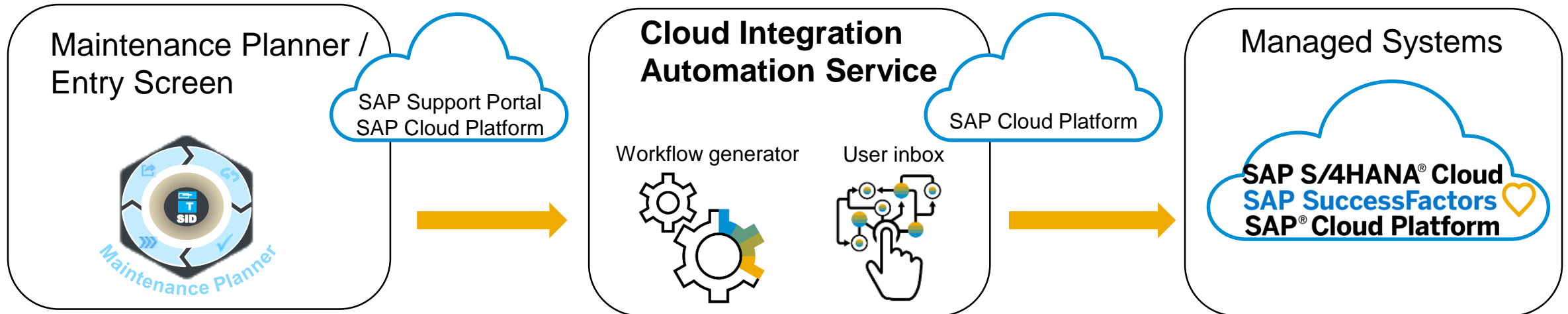
# Cloud Integration Automation Service: Step-by-step

1. In the **Entry Screen**: choose an **integration scenario** and select the **right systems**

2. Use the **Cloud Integration Automation Service** to generate a **role based workflow** with predefined tasks

3. In SAP Cloud Platform workflow: **assign the tasks** to the right experts

4. **Process the tasks** from the workflow in the managed systems



# Demo



## **SAP SuccessFactors Employee Central Integration to SAP S/4HANA Cloud** **with Cloud Integration Automation Service**

# Cloud Integration Automation Service

## Maintenance Planner, Workflow Generation, User Inbox

Start integration scenario in the Maintenance Planner

Explore Systems

Explore System Tracks

Transactions

Transfer system data to generate the workflow

SAP Maintenance Planner

MP\_CIAS\_20180627\_145800 1000528348

Invoke Integration Workflow

Cloud Integration Automation Service

SAP Cloud Platform Account Technical Name: n204a0d0c0

SAP Cloud Platform Account Workflow Users: D021131

CIA Transaction Name: SAP SuccessFactors Employee Central Integration (JB1)

Cloud Integration Scenario Planning Summary

Integration Entity Key	Value
Solution Name	SAP S/4HANA Cloud
Scenario Name	SAP SuccessFactors
Scenario Option Name	SAP SuccessFactors
SAP S/4HANA Cloud	CIA_S4CE (CIA500)
SAP SuccessFactors	CIA_SFSP (CIA502)
SAP Cloud Platform, Integration Services	CIA_SC (CIA503)

Work on the tasks in user inbox

Cloud Integration Automation Service - Scenario Monitoring

SJ\_demo\_Daimler

Scenario Executions (10)

Search
SJ_demo_Daimler
A0000000085
Started By: S0019157881
2018-06-12 09:17:04 UTC
SJ_Test_12_06_2018
A0000000084
Started By: S0019157881
2018-06-12 07:27:15 UTC
SJ_Demo_08_06_2018
A0000000080
Started By: S0019157881
2018-06-08 13:26:25 UTC

Employee Central Integration with S/4HANA Cloud (JB1)

SAP S/4HANA Cloud Integration

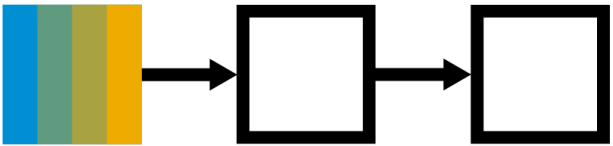
Status: RUNNING

CIA Execution ID: A0000000085

Progress: 10%

Task Details (51)

ID	Task Type	Applicable Target	User Assignment	Completed By	Status
Disclaimer	User Task	Cloud Integration Automation Service	D021131	D021131	Completed
A00001					2018-06-12 09:18:47 UTC
Confirm Landscape Components	User Task	Cloud Integration Automation Service	D021131	D021131	Completed
A00002					2018-06-12 09:19:22 UTC
Assign Users to required Roles	User Task	Cloud Integration Automation Service	D021131	D021131	Completed
A00003					2018-06-12 09:20:13 UTC



Process Overview (review of demo)

# Outlook and Summary

More Automated Tasks

Available Integration Scenarios

Benefits and Prerequisites

Links to further Information



# Demo



**New Automation Steps for upcoming Integration Scenarios**

**Cloud Integration Automation Service**

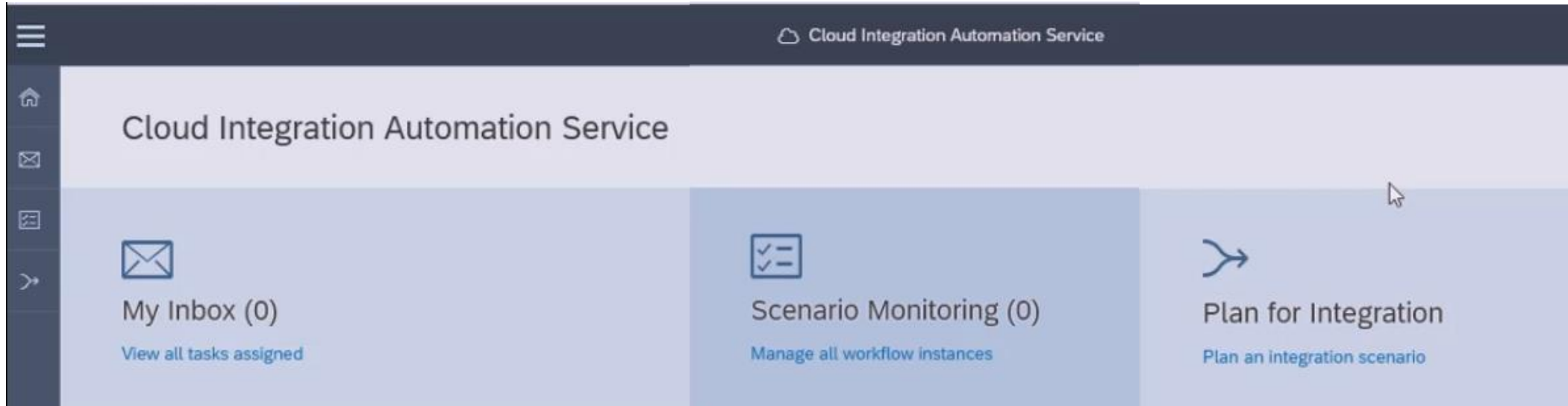


# Cloud Integration Automation Service

New Entry Screen, new User Interface



Entry Screen /  
User Interface



# Cloud Integration Automation Service

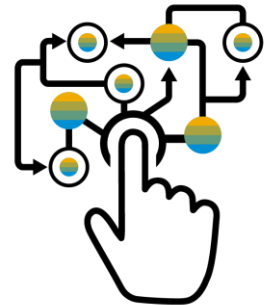
## New Automation capabilities



Stack of screenshots showing automation capabilities:

- Create User Credentials on SAP Cloud Platform
- Create Certificate-to-User Mapping
- Copying Integration Packages
- Configuring iFlows
- iFlow Deployment

The screenshots show various configuration parameters and task instructions for these automation tasks.



Automation Capabilities

# Intelligent Enterprise

## Key End-to-End Processes

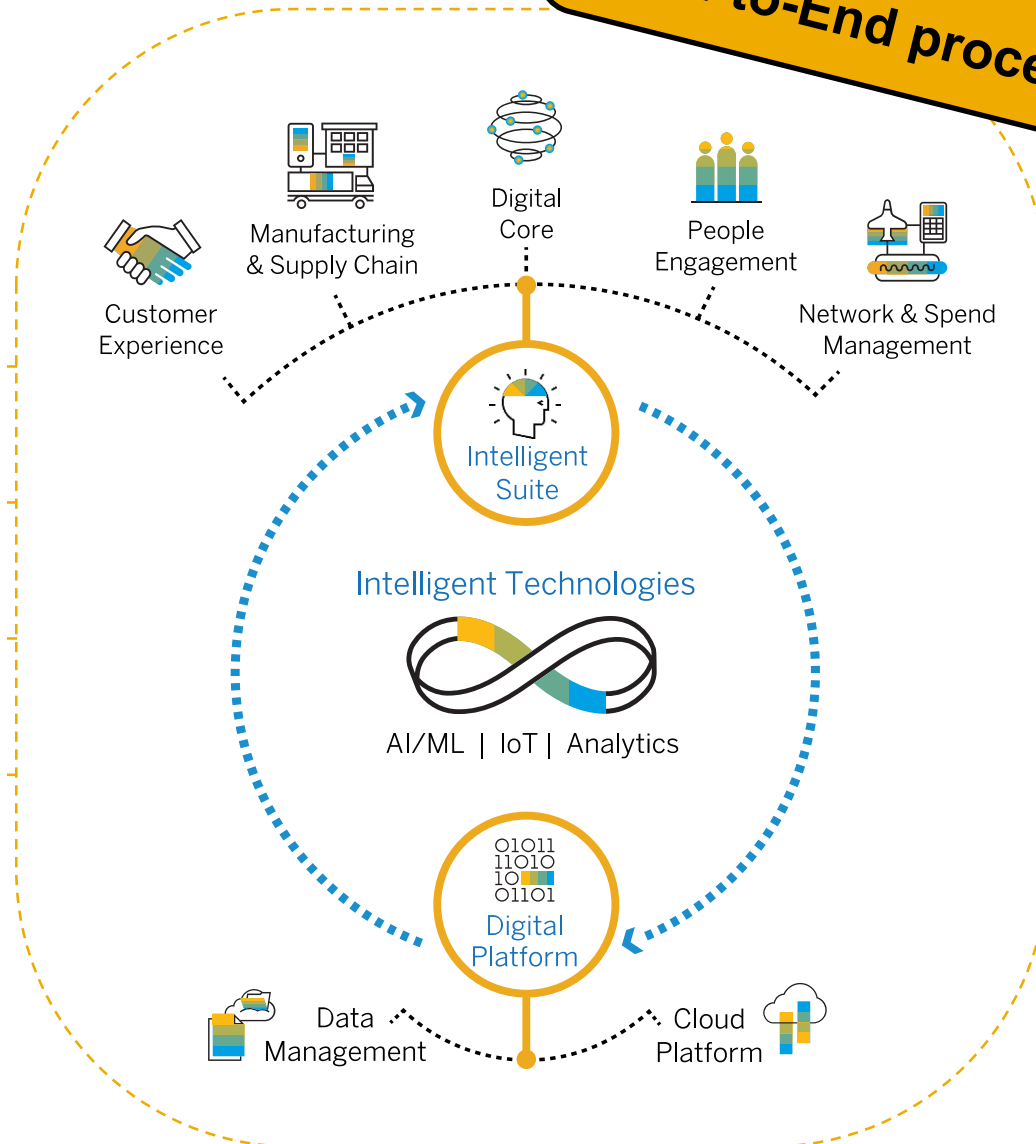
**Goal is to cover the key  
End-to-End processes first**

**Lead to Cash**  
Customer Experience

**Total Workforce Management**  
People Engagement

**Design to Operate**  
Manufacturing & Supply Chain

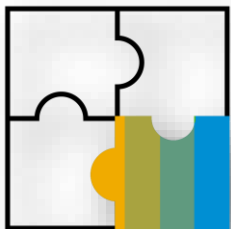
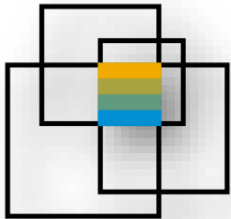
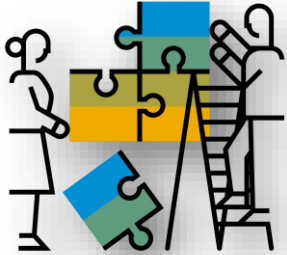
**Source to Pay**  
Spend Management



# Powered by Cloud Integration Automation Service

Available integration scenarios (as of 11/2019)

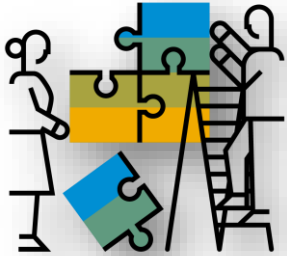
## SAP S/4HANA Cloud Integration Scenarios



1. Automated Dynamic Discounts with SAP Ariba Discount Management (19O)
2. Automated Provisioning via SAP Cloud Identity Access Governance (3AB)
3. Automated Purchase to Pay with SAP Ariba Commerce Automation (J82)
4. Automation of Order-to-Invoice with Ariba Network (4A1)
5. **Automation of Source-to-Pay with Ariba Network (42K)**
6. **B2B Order Fulfilment with SAP Commerce Cloud (2TY)**
7. Collaboration Manufacturing with SAP Digital Manufacturing Cloud (1NX))
8. Contingent Workforce Procurement via SAP Fieldglass (22K)
9. Continuous Control Monitoring with SAP Process Control (2OH)
10. Core HR with SAP SuccessFactors Employee Central (JB1)
11. Credit Agency Integration (1RY)
12. Customer Payments (1S0)
13. Customer Management with SAP Global Trade Services (2U1)
14. Digital Payments (1S2)
15. Digital Payments – Sales (1Z1)
16. External Billing (1Z6)
17. **Financial Master Data for SAP SuccessFactors Employee Central (4AJ)**
18. **Guided Buying Capability with Sap Ariba Buying (2NV)**
19. Guided Buying for Central Procurement with SAP Ariba Buying (3EN)
20. Import Connection setup with SAP Analytics (1YB)
21. Integration of Payment Advice with Buyers and Suppliers (2MB)
22. Integration of Procurement with External Suppliers (2EJ)
23. Integration of Sales with External Buyers (2EL)
24. Key Risk Indicator Monitoring with SAP Risk Management (2U2)
25. Leverage SAP Financial Statement Insights and SAP RealSpend (1KU)
26. Logistics with Third-Party Warehouse Management (1ZQ)
27. Opportunity-to-Order with SAP Cloud for Customer (1VP)
28. Order Management Data Replication to SAP Marketing Cloud (1UG)
29. Payroll Proc. with SAP SuccessFactors Employee Central Payroll (1NL)
30. Restricted Party Screening with SAP Watch List Screening (1WE)
31. Sales Billing with SAP Subscription Billing (2AP)
32. Social Collaboration Integration (1JB)
33. **Sourcing with SAP Ariba Sourcing (4BL)**
34. Supplier Quote Automation with SAP Ariba Commerce Automation (1L2)
35. Third Party Shop Floor Execution – Discrete Industry (3W4)
36. Third Party Shop Floor Execution – Process Industry (4W4)
37. Travel Expense Proc. with SAP Concur Expense Professional (1M1)
38. **Workforce Management with SAP Cloud Platform Services (4AF)**

# Powered by Cloud Integration Automation Service

Available integration scenarios (as of 11/2019)

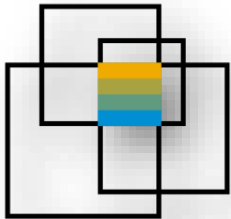


## Hybrid Integration Scenarios

- SAP Fiori Cloud for SAP S/4HANA with reference App
- SAP SuccessFactors Employee Central with SAP S/4HANA On Premise Integration

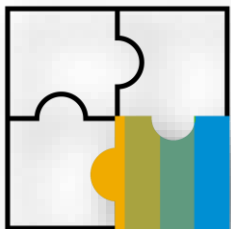
## SAP Cloud Platform ABAP Integration

- SAP Cloud Platform, ABAP Environment: Setup
- SAP Cloud Platform ABAP and SAP S/4HANA Cloud: Integration



## Intelligent Enterprise Scenarios

- Total Workforce Management
  - Financial Master Data for SAP SuccessFactors Employee Central (4AJ)
  - Integration Setup for EC to EC Payroll (15O)
  - Payroll Processing with SAP SuccessFactors Employee Central Payroll (1NL)
  - Workforce Management with SAP Cloud Platform Services (4AF)
- Source to Pay
  - Automation of Source-to-Pay with Ariba Network (42K)
  - Guided Buying Capability with SAP Ariba Buying (2NV)
  - Sourcing with SAP Ariba Sourcing (4BL)
- Lead to Cash
  - B2B Order Fulfilment with SAP Commerce Cloud (2TY)





# Benefits of Cloud Integration Automation Service

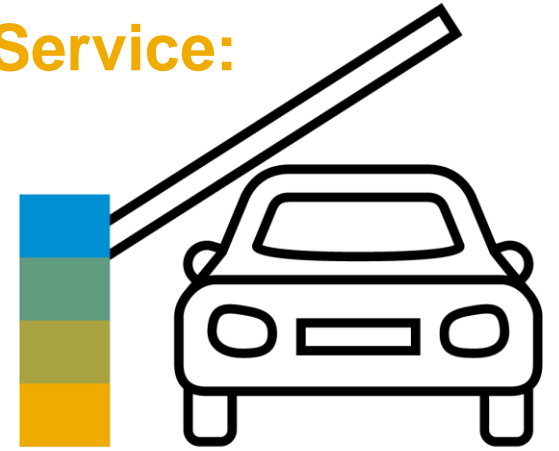
- You get a **unified solution** for the integration of business scenarios from SAP
- The Cloud Integration Automation Service offers
  - **partially automated**
  - **standardized**
  - **role based**
  - **integrated**configuration of SAP integration scenarios
- It provides a **guided workflow** with automated configuration capabilities
- It provides the **latest up-to-date** information for the scenario integration
- It makes use of the **planning- and landscape** information accessible from the **Maintenance Planner**
- It reduces **manual** work for the scenario integration
- It makes sure that the **technical configuration is completed** before the start of business process modelling



## Prerequisite for the usage of **Cloud Integration Automation Service**:

This voluntary service can be used **at no additional fee or license cost**, if you have:

- an **S-User** assigned to the right system IDs to access the Maintenance Planner
- a **SAP Cloud Platform Neo account**, see SAP release Note [2608492](#) or a SAP Cloud Platform Integration account to subscribe to for the Cloud Integration Automation Service
- System instances of **licensed SAP cloud products** that are in scope of this Service



## First Steps to start with **Cloud Integration Automation Service**:

1. Get familiar with the offering by going through the sources that are externally available
2. **Request usage entitlement** via incident on component BC-INS-CIT-RT (SAP Note 2608492)
3. **Setup your SAP Cloud Platform account for Cloud Integration Automation Service** as described in the User Guide on SAP Help Portal
4. Start in the Maintenance Planner with *Plan for Cloud Integration Scenario*

# Further Information on Cloud Integration Automation Service

## External information:

- **Help Portal:** <https://help.sap.com/viewer/p/Cloud%20Integration%20Automation%20Service>
- **SAP Note:** <https://launchpad.support.sap.com/#/notes/2608492>
- **Blog:** <https://blogs.sap.com/2018/05/28/cloud-integration-automation-service-what-is-it/>
- **Blog:** <https://blogs.sap.com/2018/06/08/cloud-integration-automation-service-step-by-step/>
- **Blog:** <https://blogs.sap.com/2018/09/17/new-scenarios-for-cloud-integration-automation-service/>
- **Maintenance Planner:** [https://apps.support.sap.com/sap\(bD1kZSZjPTAwMQ==\)/support/mp/index.html](https://apps.support.sap.com/sap(bD1kZSZjPTAwMQ==)/support/mp/index.html)
- **Activate Roadmap:** [Activate Roadmap](#)
- **Best Practice Explorer:** <https://rapid.sap.com/bp/#/browse/scopeitems/JB1>
- **Support Portal:** <https://support.sap.com/en/tools/software-logistics-tools/sl-for-sap-cloud-platform.html>

## More Blogs that refer to Cloud Integration Automation Service:

- **Simplify your hybrid implementation of SAP Fiori Cloud with SAP S/4HANA 1709 via guided, role based, automated, task-based workflows:** <https://blogs.sap.com/2018/11/11/simplify-your-hybrid-implementation-of-sap-fiori-cloud-with-sap-s4hana-1709-via-guided-role-based-automated-task-based-workflows/#>
- **HR Connectivity in SAP S/4HANA Cloud:** <https://blogs.sap.com/2018/05/31/hr-connectivity-in-sap-s4hana-cloud/>
- **S/4HANA SuccessFactors Integration:** <https://blogs.sap.com/2018/05/02/sap-s4hana-cloud-integration-sap-successfactors-employee-central/>
- **SAP S/4HANA Cloud Integration | SAP Concur** <https://blogs.sap.com/2018/06/18/sap-s4hana-cloud-integration-sap-concur/>
- **Learn about new innovations on integrating with SAP** <https://blogs.sap.com/2019/04/29/learn-about-new-innovations-on-integrating-with-sap/>

# Thank you.

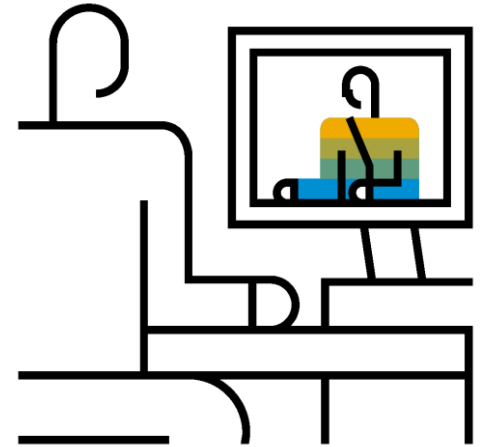
Contact information:

**Stefan Jakobi**

Product Manager  
Cloud & Lifecycle Management  
SAP SE

# Feedback and Questions

[stefan.jakobi@sap.com](mailto:stefan.jakobi@sap.com)





# Appendix



Follow us



[www.sap.com/contactsap](https://www.sap.com/contactsap)

© 2020 SAP SE or an SAP affiliate company. All rights reserved.

No part of this publication may be reproduced or transmitted in any form or for any purpose without the express permission of SAP SE or an SAP affiliate company.

The information contained herein may be changed without prior notice. Some software products marketed by SAP SE and its distributors contain proprietary software components of other software vendors. National product specifications may vary.

These materials are provided by SAP SE or an SAP affiliate company for informational purposes only, without representation or warranty of any kind, and SAP or its affiliated companies shall not be liable for errors or omissions with respect to the materials. The only warranties for SAP or SAP affiliate company products and services are those that are set forth in the express warranty statements accompanying such products and services, if any. Nothing herein should be construed as constituting an additional warranty.

In particular, SAP SE or its affiliated companies have no obligation to pursue any course of business outlined in this document or any related presentation, or to develop or release any functionality mentioned therein. This document, or any related presentation, and SAP SE's or its affiliated companies' strategy and possible future developments, products, and/or platforms, directions, and functionality are all subject to change and may be changed by SAP SE or its affiliated companies at any time for any reason without notice. The information in this document is not a commitment, promise, or legal obligation to deliver any material, code, or functionality. All forward-looking statements are subject to various risks and uncertainties that could cause actual results to differ materially from expectations. Readers are cautioned not to place undue reliance on these forward-looking statements, and they should not be relied upon in making purchasing decisions.

SAP and other SAP products and services mentioned herein as well as their respective logos are trademarks or registered trademarks of SAP SE (or an SAP affiliate company) in Germany and other countries. All other product and service names mentioned are the trademarks of their respective companies.

See [www.sap.com/copyright](https://www.sap.com/copyright) for additional trademark information and notices.