

turning business into Value

**a strategic look on
augmented insights with
SAP Analytics**

Iver van de Zand

Vice President Solution Management Augmented BI

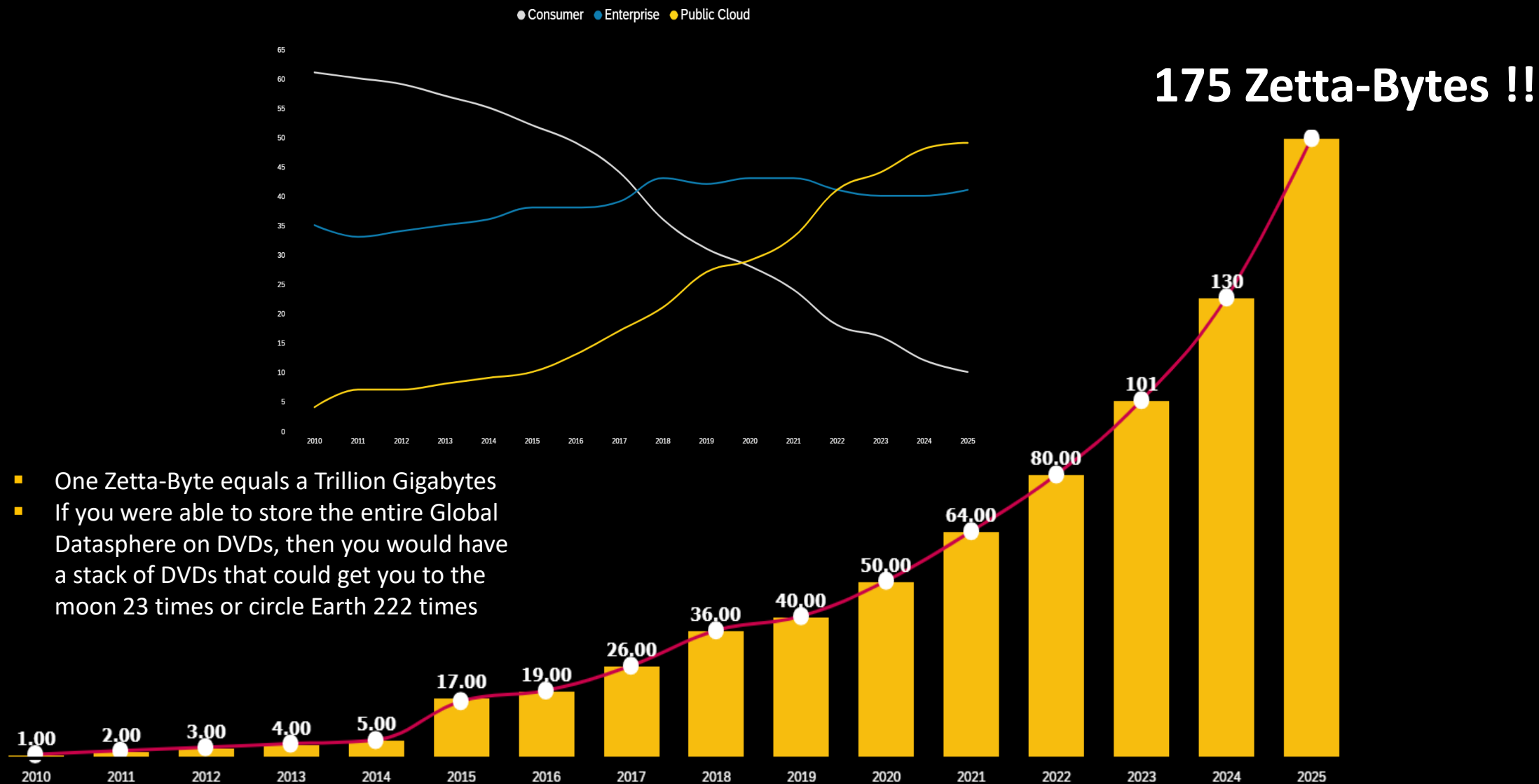
THE BEST RUN



An aerial night photograph of a city, likely New York City, showing a dense grid of streets and buildings illuminated by city lights. The lights reflect on the dark water of the harbor. The image has a dark blue gradient overlay in the top-left corner.

Data & Analytics EVERYWHERE

Global Digitization Data Sphere



TB*

PB



THE DATA VALUE CHAIN

AMOUNT

x

QUALITY

x

USAGE

=

VALUE

Data of any size
In-Memory | Disc | Lake

Data from anywhere
Database | Web | Streams

Data for anyone
BI | Planning | Predictive

Data driven enterprise



SAP HANA Cloud Services

TECHNOLOGIES



SAP HANA Cloud

Manage your data storage, federation, and run powerful applications with the power of SAP HANA in the cloud

Amount



SAP Data Warehouse Cloud

End-to-end data warehouse in the cloud that combines data management processes with advanced analytics

Quality



SAP Analytics Cloud

Analytics technology – business intelligence (BI), planning, and predictive analytics – in a single solution

Usage

Welcome to SAP Data Warehouse Cloud

With SAP Data Warehouse Cloud you'll find the right tools that combine powerful data management capabilities with the broadest, advanced analytics, helping you make confident decisions - all in one, all in the cloud.

Here's how to get started in three steps

1 Create and manage Spaces for your team to work in

[Create Spaces](#) [Learn More](#)

2 Integrate on-premise or cloud sources with the Data Builder

[Build Data](#) [Learn More](#)

3 Bring your data to life by using the powerful Story Builder

[Build a Story](#) [Learn More](#)

[Show Less](#)

Have Feedback or an Idea to Share?

Share your feedback or idea on how to improve SAP Data Warehouse Cloud. Or discuss and vote on other people's ideas in the Community Blog.

[Send Feedback](#)

[View Community Blog](#)

Recent Files

Cube_Sales
Cube_Sales
Last accessed Feb 6, 2020 10:16

ProductCategoryText
ProductCategoryText
Last accessed Feb 6, 2020 10:15

ProductCategories
ProductCategories
Last accessed Feb 6, 2020 10:15

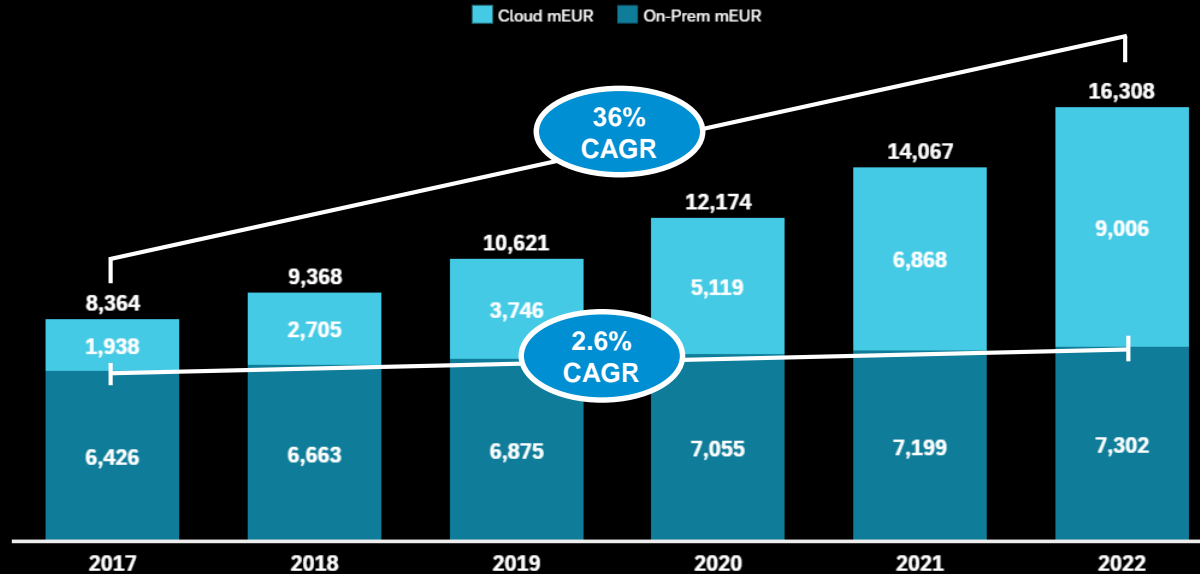
SalesOrders
SalesOrders
Last accessed Feb 6, 2020 10:15

ProductTexts
ProductTexts
Last accessed Feb 6, 2020 10:15

Market Perspective

Overall Market Spend for Analytics

Spend in Millions €



BI market today

Self-Service tools are quickly becoming commoditized and while platforms and reporting are still considered valuable, these capabilities do not drive purchasing decisions

New technologies

Embedded, augmented, and prescriptive analytics have emerged but are still in early stages

New roles and requirements

New market opportunities created by new roles like the Chief Data Officer, the increasing desire for privacy, and the need for corporate agility

Our Opportunity

We see an opportunity to deliver a solution that **enables the digital workforce**, and where **data-driven decision making is expected of everyone**.

Our Position

SAP Analytics Cloud (SAC) has proven to be the **right strategy and vision**, with its stellar market growth. It is by no means to path forward

We will invest in **on-premise, hybrid and reporting** use cases to retain these on-premise customers, and guide them eventually to SAP Analytics Cloud when applicable.



SAP Analytics Cloud Customer Adoption



4200+

Paying Customers



400%

Growth in license adoption



122

Reference Customers

Over 900 Customers went live in 2019



Deliver value realization



AG Real Estate

Using augmented analytics to revitalize customer's experience and increase revenue



Vestas

Delivering supply chain self-service reporting



Delaware

Provide transparency into project to upper management.



Analytics: **Strategy**

One | Simple | Cloud

“SAP Analytics Cloud is the strategic analytics platform for all **SAP business applications** moving forward.”



All Analytics, One Cloud-
Based Platform



Powering the Intelligent
Enterprise Suite



Hybrid Analytics



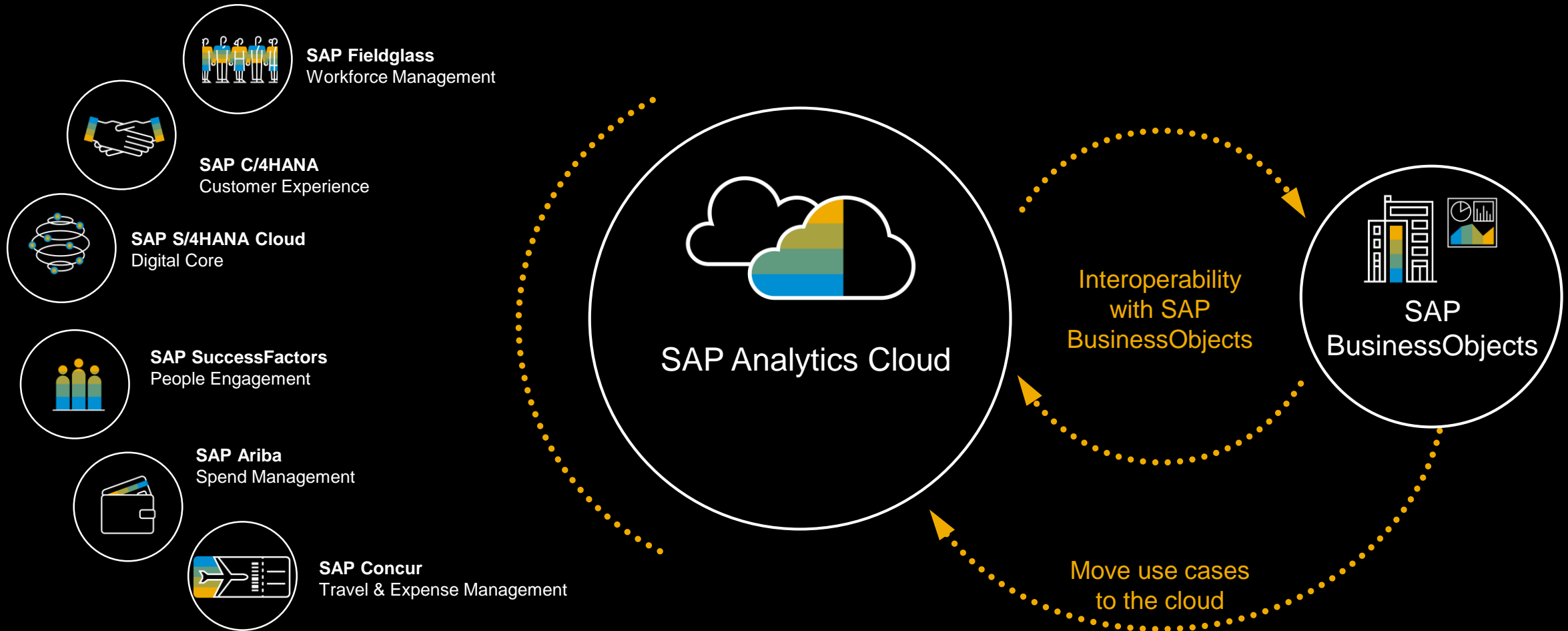
Augmented Analytics



Innovations

Extend Analytics Vision

SAP Analytics Cloud and SAP BusinessObjects Working Together



Winning the end users

Enterprise Reporting

Historical
Static & Linear
Top-down
Costly



Self-Service Analytics

Dynamic
Fast iterations
Distributed



Augmented Analytics

Intelligent
Automated
Predictive



IT

Curated data models and reports operationalized for the enterprise

Analyst

Data & visualization tools for self-service storytelling

Information Workers

Smart search and augmented insights for cost center managers, line managers, finance managers, category managers, branch managers, suppliers, customers, etc.

Data Democratization: Shifting insight to everyone

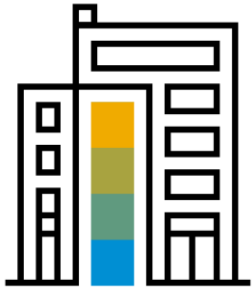
SAP Analytics Portfolio comprises **two key solutions**



SAP Analytics Cloud



If you are looking to take advantage of the benefits of a cloud solution, SAP Analytics Cloud is the strategic analytics platform for all SAP applications.



SAP BusinessObjects BI suite



If you prefer to manage your applications on-premise, SAP BusinessObjects BI Suite is the best and most scalable enterprise reporting solution in the industry.

Many customers use both solutions side by side enabled thru interoperability

SAP Analytics Cloud is **Game Changing**

SMART

Augmented and smart capabilities help you find the most valuable insights at the right moment

FAST & SECURE

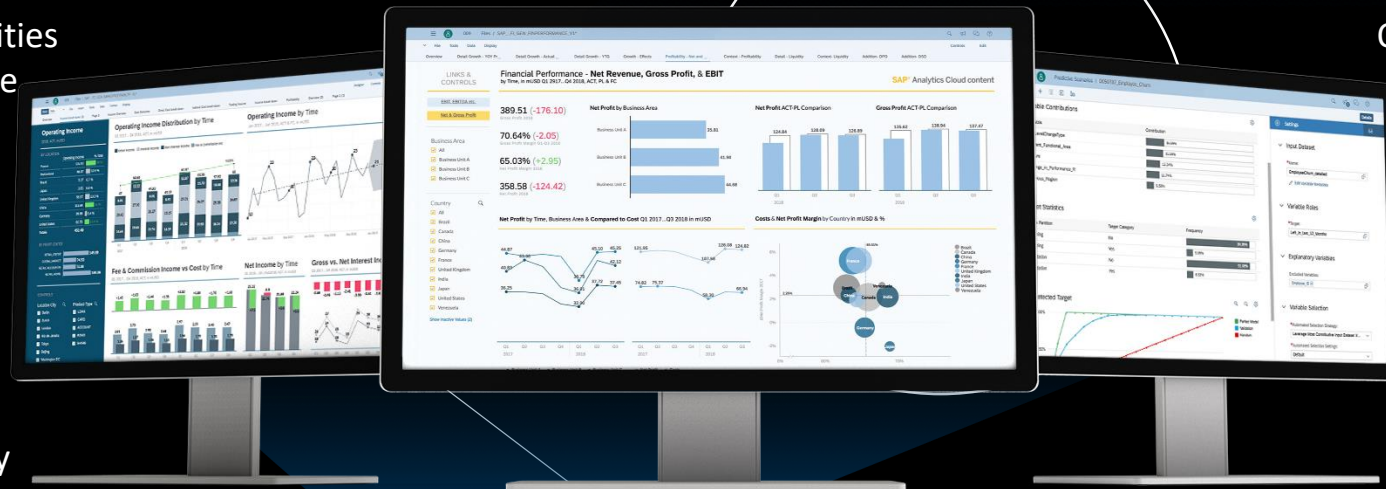
Live and governed connectivity guarantees real-time data access in a secure way

END-TO-END

One solution combining Business Intelligence, Planning and Predictive Analytics to monitor, project and simulate

ENTERPRISE READY

Designed for seamless collaboration with others users and commenting at any moment





Strategy & Investments

Strategy: don't miss out on our SAP BI Statement of Direction

SAP Analytics Business Intelligence, Statement of Direction

EXECUTIVE SUMMARY

The SAP Analytics portfolio includes SAP BusinessObjects BI Suite (including Analysis for Office), SAP Business Planning & Consolidation, as well as SAP Analytics Cloud. We provide solutions for a diverse set of customer environments including on-premise, cloud, mixed and embedded analytics deployments. This paper describes our future direction for our Business Intelligence customers.

SAP Analytics Cloud is our strategic direction and is changing the way our customers run their business to help them understand their data in context to make fast, confident decisions. The integration of Business Intelligence, Enterprise Planning and Augmented Analytics in a single engine allows for a smooth experience and lossless transitions from reporting to simulation to enterprise planning and back again, all augmented by machine learning. SAP Analytics Cloud gives everyone visibility on critical information by providing self-service analytics capabilities that extend to a wider audience than ever before, while delivering on the

true needs for Analytics in the enterprise: scale, security, and corporate data connectivity.


Analytics without context has less value. As part of SAP's Intelligent Enterprise strategy SAP Analytics Cloud will be embedded in SAP's Cloud suite; not only can more users benefit from SAP Analytics Cloud, we also can better meet the precise requirements in each different domain.

As we define the future of SAP Analytics Cloud, we are committed to include a future for our existing SAP BusinessObjects customers. We are delivering major innovations in the coming year with the BI 4.3 release, and will continue to do so through **continued maintenance** until 2027 at a minimum. As more and more customers run both solutions simultaneously, we are proposing more interoperability and are working on defining tools and capabilities to help our customers who want to transition their workloads to the cloud.

[sapanalytics.cloud/blog/](#)
[naged Bookmarks](#)
[PoC](#)
[BDC](#)
[Flori](#)
[HR](#)
[JAM](#)
[Metric](#)
[News](#)
[SAP Dev](#)
[SAP Demo](#)
[SCN](#)
[Search & Read](#)
[Social](#)
[SAP & To check](#)
[HCS](#)
[Smart](#)
[BCC](#)
[Conc](#)
[CRM](#)

SAP Analytics Cloud

[Product](#)
[Solutions](#)
[Plans](#)
[Learning](#)
[Partners](#)

[Log In](#)
[Try it free](#)


CATEGORIES




[All Posts](#)
[Meet the team](#)
[What's New](#)
[Publications](#)
[Insights](#)
[Learning](#)
[News](#)

KEEP IN TOUCH


Subscribe for the latest news, updates, tips and more delivered right to your inbox.

[Subscribe to updates](#)

CONNECT WITH US


Latest Blog Posts



WHAT'S NEW


Get Superior Analytics with the SAP Data Warehouse Cloud Integration

By: Maddle Martin



PUBLICATIONS


Business Intelligence Statement of Direction





LEARNING

Hands-On Tutorial SAP Analytics Cloud, R Visualization

By: Yannick Schaper







Planned Innovations 2020/2021



Agile BI Data Preparation

Agile Data Modelling & Wrangling capabilities for Business Users



Data Exploration

Data Analyzer and Explorer enhancements to provide best in class analysis experience for BW and any other source



Enterprise Reporting

Story scheduling, extended reporting capabilities, additional export functionality (e.g. to PPT)



Mobile

Great mobile experience with Search to Insight, featured Content, alerts and mobile app for Android



SAC embedded in all SAP Core Applications

Deep embedding of SAC in S/4HANA, C/4HANA, Fieldglass, Ariba, Qualtrics etc.



Additional Hyperscaler Support

Support of Azure, GCP, Alibaba



Focus on Hybrid Scenarios

Analytics Catalog, extended Universe connectivity, WebI connectivity to SAC, Analysis for Office integration



Enterprise Readiness

Extending Content life cycle management (ACN), multilingual support, usage monitoring, API's and SDK

Planned Innovations 2020/2021



Predictive Live-Connectivity

Make use of Live Connections for predictions in SAC (Smart Predict, Smart Insights etc.)



Commenting everywhere

Enabling commenting in all BI use cases & enhancing with new widget



Table & Data Entry for planning

Optimized table for large data sets with faster and more flexible data entry



Planning specific – Advanced Calculations

Data Action automation via scheduling and multi actions, business functions, debugging, allocations, validations



Calendar & Process Support for planning

Process dependency support, Data Locking & Story integration, mass user support, process monitoring



Planning specific Modeling Capabilities

Universal Model that better integrates to our LoBs and DWC, enhanced time dimension with week support & additional periods, attribute types



Extending Planning Integrations

Export to SAP BW, Export enhancements for S/4HANA & IBP, Extended integration of Smart Predict results in planning models



Office 365 Add-in

Analyze & Plan with SAP Analytics Cloud models in any Microsoft Office 365 version

All

Stories

Analytic Applications

Digital Boardrooms

Uploaded Files

External Content



SAP BW Live - Generic Demo V4 + Geo (Final Version)
Updated 20 minutes ago

SAC Live BW Access. Generic Demo with many features - e.g....

5 - ☆ ...



PPTX Export Demo
Updated 2 weeks ago

SAC Demo with BW Live Access - PPT Export!

18 - ☆ ...



SAP Digital Boardroom - Sales Demo
Updated 2 weeks ago

SAP Digital Boardroom powered by SAP Analytics Cloud - SAP...

1 - ☆ ...



SAP Digital Boardroom - General Company Overview - 3...
Updated 2 weeks ago

SAP Digital Boardroom powered by SAP Analytics Cloud - Overv...

1 - ☆ ...



SAP BI 4.3 Sneak Preview
Updated 2 weeks ago

SAP BI 4.3 Sneak Preview


- - ☆ ...



SAP Analytics Cloud Analytics Designer - KPI Dashboard
Updated 2 weeks ago

App created with SAC Analytics Designer showing how to organ...


1 - ☆ ...



SAC Predictive Case
Updated 2 weeks ago

Predicted Factory Costs provided by SAC Smart Predict

- - ☆ ...



SAC Analytics Designer App - BestRun Bikes
Updated 2 weeks ago

SAC Analytics Designer App - BestRun Bikes

- - ☆ ...



SAC Analytics Designer - Sales App
Updated 2 weeks ago

Application build with SAP Analytics Cloud Analytics Desig...

- - ☆ ...



SAC - Tread - Combining X Data with O Data
Updated 2 weeks ago

SAC: Tread - Combining X Data with O Data

- - ☆ ...



Qualtrics Digital CX + SAP Commerce Cloud
Updated 2 weeks ago

Qualtrics Digital CX + SAP Commerce Cloud


- - ☆ ...



BestRun Bike
Updated 2 weeks ago

BestRun Bike Demo

- - ☆ ...



COVID-19 Analysis
Updated 4 days ago

COVID-19 analysis. The model is updated daily (morning CET) with the latest data set. Story a...

224 - ☆ ...

Some recent & Upcoming innovations

Analytics Catalog GA QRC Q2



- Not replacing Analytics Hub



Some recent & Upcoming innovations

Scheduling & Publishing GA QRC Q2



- Schedule Publications is only available on Cloud Foundry
- Customers get 5% of total number of users as Publications Per hour = More Users more Publications.
- A minimum of 1 publication per hour is available when the customer has a minimum of 25 SAC BI Licenses.
- Each single publication can be sent to every SAC user email available in the Tenant and for 3 Non SAC users per publication
- Concurrent sessions are counted as users

Customers	No. of Licenses	Number of Publications Per Hour (A)	Number of Publications Per Day (A X 24)
Customer A	25	1	24
Customer B	31	2	48
Customer C	100	5	120
Customer D	101	5	120
Customer E	110	6	144

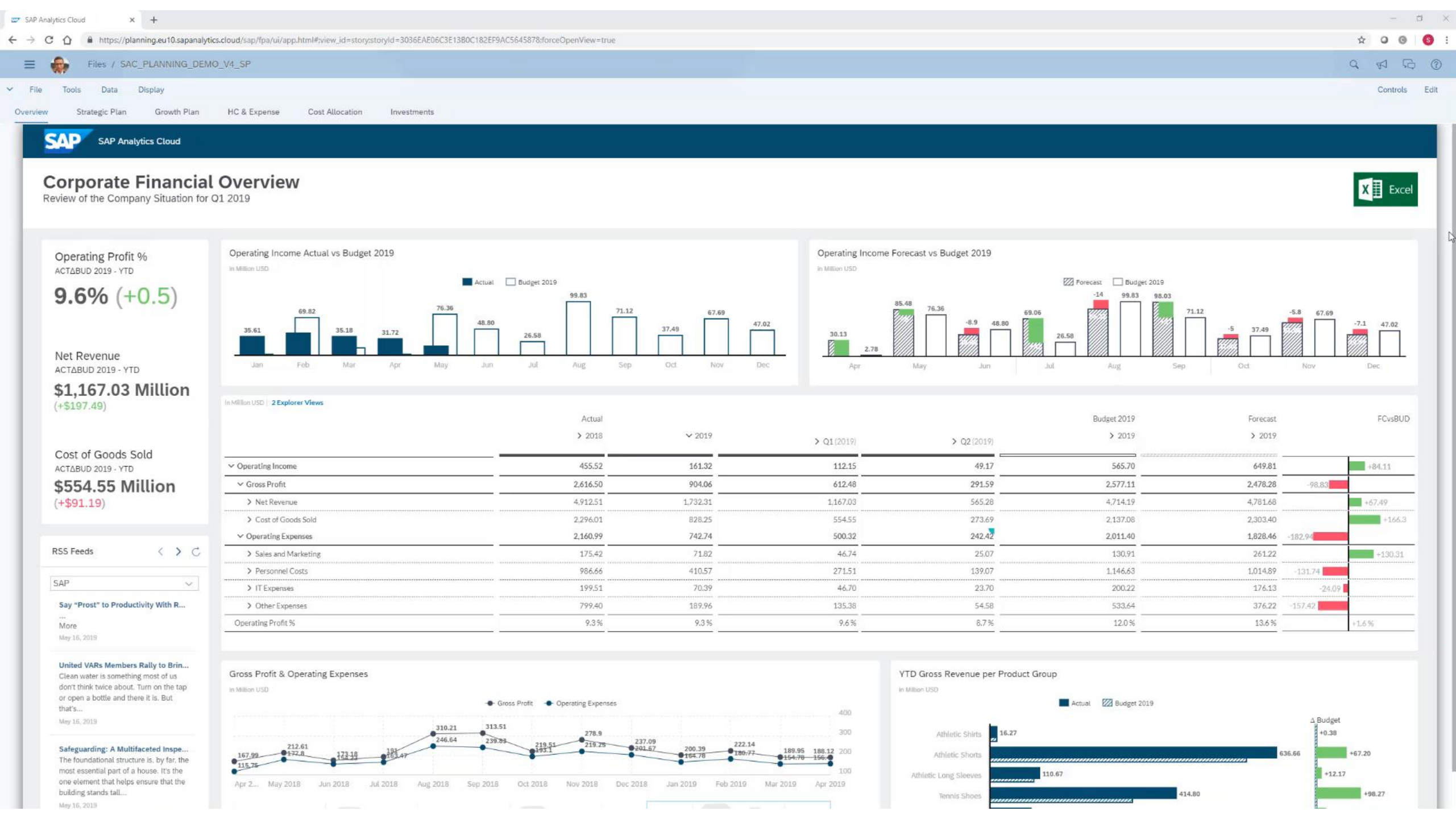
[Back to Slide](#)

30

Some recent & Upcoming innovations

Ms Office in for SAP Analytics Cloud GA QRC Q2





Some recent & **Upcoming** innovations

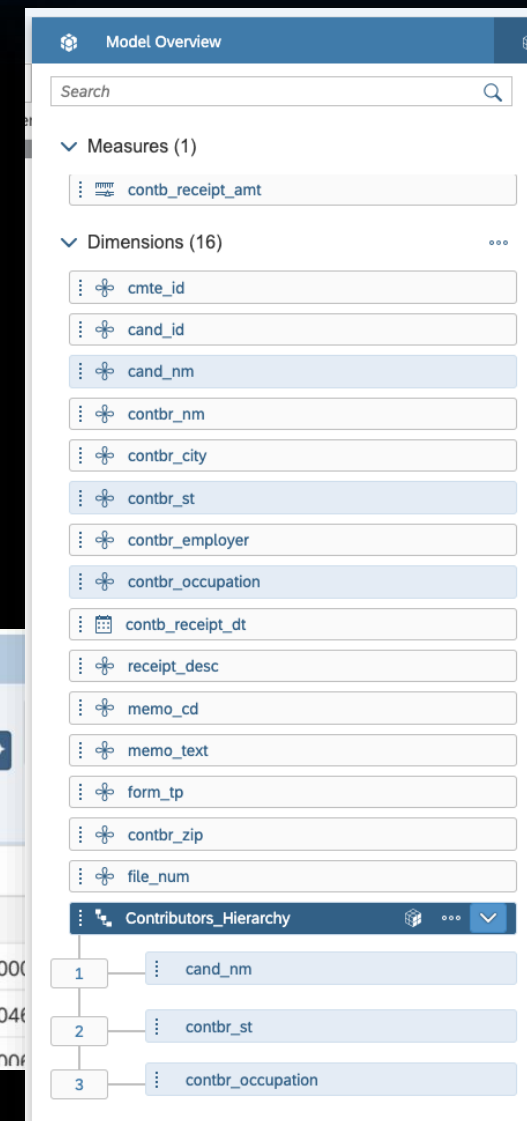
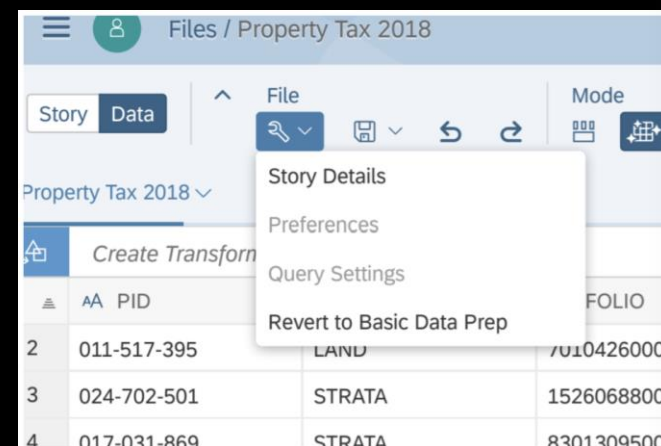
Agile Analytics for SAP Analytics Cloud GA QRC Q3

PLANNED

2020.Q3.QRC

Increase self-service analytics usage by removing constraints when manipulating data, and speeding up the Analytical process

- New workflow for loading and manipulating data from spreadsheets
- Data no longer stored as Star Schema in the back end
- Data held as a “Dataset”, single table
- New experience will be in QRC-Q3 (Wave12)



_HR_Employee_Sa...

Create Transform

	Employee...	First Name	Last Name	Full Name	Gender	Department	Office Re...	Office Co...	Office Loc...	Age
1	i002	Jase	Erni	Jase Erni	Male	Accounting	EMEA	Belgium	Brussels	50.0
2	i003	Marshall	Michal	Marshall Michal	Male	Accounting	EMEA	Belgium	Brussels	50.0
3	i004	Currie	Bertenshaw	Currie Bertenshaw	Male	Accounting	NA	USA	New York City	40.0
4	i006	Cull	Gilhoolie	Cull Gilhoolie	Male	Accounting	EMEA	Belgium	Brussels	50.0
5	i008	Gavan	Brewin	Gavan Brewin	Male	Accounting	EMEA	Belgium	Brussels	50.0
6	i010	Berkeley	Simonson	Berkeley Simonson	Male	Accounting	NA	USA	New York City	40.0
7	i011	Nikolaos	Goad	Nikolaos Goad	Male	Accounting	EMEA	Belgium	Brussels	50.0
8	i013	Ode	Pawlowicz	Ode Pawlowicz	Male	Accounting	EMEA	Belgium	Brussels	50.0
9	i001	Renie	Ginty	Renie Ginty	Female	Accounting	NA	USA	New York City	40.0
10	i005	Winona	Woodsford	Winona Woodsford	Female	Accounting	NA	USA	New York City	40.0
11	i007	Frieda	Helks	Frieda Helks	Female	Accounting	NA	USA	New York City	40.0
12	i009	Adela	Le Merchant	Adela Le Merchant	Female	Accounting	EMEA	Belgium	Brussels	50.0
13	i012	Mariquilla	Kingscote	Mariquilla Kingscot	Female	Accounting	NA	USA	New York City	40.0
14	i014	Gallagher	Rhoades	Gallagher Rhoades	Male	Engineering	NA	USA	Chicago	41.0
15	i015	Killy	Taggart	Killy Taggart	Male	Engineering	NA	USA	Chicago	41.0
16	i017	Nollie	Raycroft	Nollie Raycroft	Male	Engineering	NA	USA	Chicago	41.0
17	i019	Benedetto	Butten	Benedetto Butten	Male	Engineering	NA	USA	Chicago	41.0
18	i021	Ellerey	Thorp	Ellerey Thorp	Male	Engineering	NA	USA	Chicago	41.0
19	i022	Elliot	Pinnington	Elliot Pinnington	Male	Engineering	NA	USA	Chicago	41.0
20	i023	Guillermo	Furmston	Guillermo Furmston	Male	Engineering	NA	USA	Chicago	41.0
21	i024	Sanders	Clere	Sanders Clere	Male	Engineering	NA	USA	Chicago	41.0
22	i026	Phillip	Curryer	Phillip Curryer	Male	Engineering	NA	USA	Chicago	41.0

Details Transform Log

Dataset Overview

_HR_Employee_Salary 172 rows 15 columns

Search

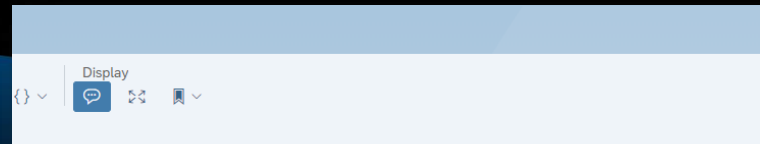
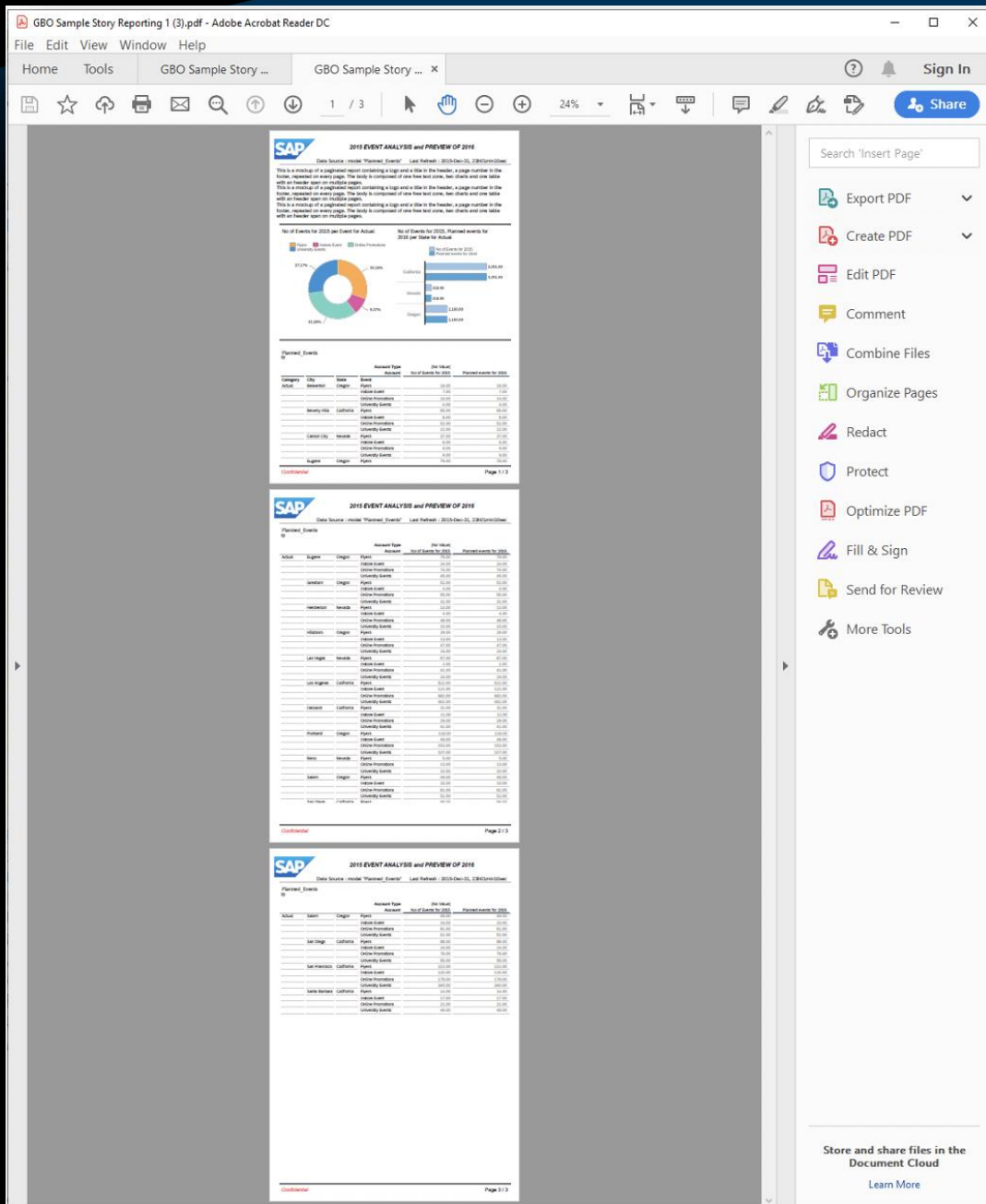
Output Columns

Measures (1)

Age

Dimensions (14)

- Employee ID
- First Name
- Last Name
- Full Name
- Gender
- Department
- Office Region
- Office Country
- Office Location
- Office Geo
- Employment Type
- Position
- Annual Salary
- Count



PLANNED

2020 Q4 QRC



2015 EVENT ANALYSIS and PREVIEW OF 2016

Data Source : model "Planned_Events" Last Refresh : 2015-Dec-31, 23h01min10sec

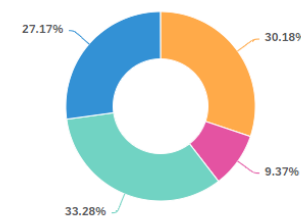
This is a mockup of a paginated report containing a logo and a title in the header, a page number in the footer, repeated on every page. The body is composed of one free text zone, two charts and one table with an header span on multiple pages.

This is a mockup of a paginated report containing a logo and a title in the header, a page number in the footer, repeated on every page. The body is composed of one free text zone, two charts and one table with an header span on multiple pages.

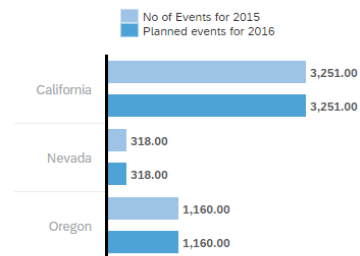
This is a mockup of a paginated report containing a logo and a title in the header, a page number in the footer, repeated on every page. The body is composed of one free text zone, two charts and one table with an header span on multiple pages.

No of Events for 2015 per Event for Actual

Flyers Instore Event Online Promotions
University Events



No of Events for 2015, Planned events for 2016 per State for Actual



Planned_Events

Category	City	State	Event	Account Type	(No Value)	Planned events for 2016
				Account	No of Events for 2015	
Actual	Beaverton	Oregon	Flyers		16.00	16.00
			Instore Event		7.00	7.00
			Online Promotions		14.00	14.00
			University Events		4.00	4.00
	Beverly Hills	California	Flyers		65.00	65.00
			Instore Event		8.00	8.00
			Online Promotions		52.00	52.00
			University Events		22.00	22.00
	Carson City	Nevada	Flyers		37.00	37.00
			Instore Event		6.00	6.00
			Online Promotions		9.00	9.00
			University Events		9.00	9.00
	Eugene	Oregon	Flyers		79.00	79.00

Confidential

Page 1 / 3

SAP Labs Preview

This is the current state of planning and may be changed by SAP at any time



Home



Today Catalog Favorites

Published 9 Items

Filter

Recently added



Search



All

Stories

Analytic Applications

Digital Boardrooms

Uploaded Files

External Content



Overview

Updated 6 hours ago

The following topics have been covered:
Overview...

95



Finance Overview

Updated 3 days ago

The following topics have been covered:Revenue
PlanningStrategic PlanningCa...

32



Profitability Analysis

Updated 5 hours ago

This page gives a detailed
profitability analysis.

135



Internal Purchasing Order

Updated 3 days ago

This story summarizes the recent
purchasing order.

2



Human Resources

Updated 3 days ago

The following topics have been covered:
Human Resource Overview...

38



Vendor Management

Updated 3 days ago

The following topics have been covered:
Vender Management Overview...

34



Sales & Revenue

Updated 3 days ago

The following topics are covered:
Sales Overview
Pipeline...

19



Travel Overview

Updated 3 days ago

The following topics have been covered:
Travel Overview...

33



BestRun Bike Dashboard

Updated 3 days ago

Using SAC, BestRun Bikes
company is able to discover cost
saving and revenue growth opp...

729



3



SAP

SAP On-Premise BI Platform Strategy

For customers who decide to manage applications on-premise, SAP BusinessObjects BI Suite is one of the best and most scalable enterprise reporting solutions in the industry.

SAP continues to invest into the on-premise BI Suite



Ready for the Future

Remove deprecated components, provide new capabilities and integrate to the Intelligent Enterprise



Enterprise Readiness

Enhanced scheduling & publishing frameworks



Hybrid Analytics

Open the Core for the transition to the Cloud. Strong investment into Hybrid scenarios to help customers transition to the cloud



User Experience

State of the art Fiori-Design which will help to increase adoption and consistency



Simplification

Installation and deployment

SAP BusinessObjects BI 4.3

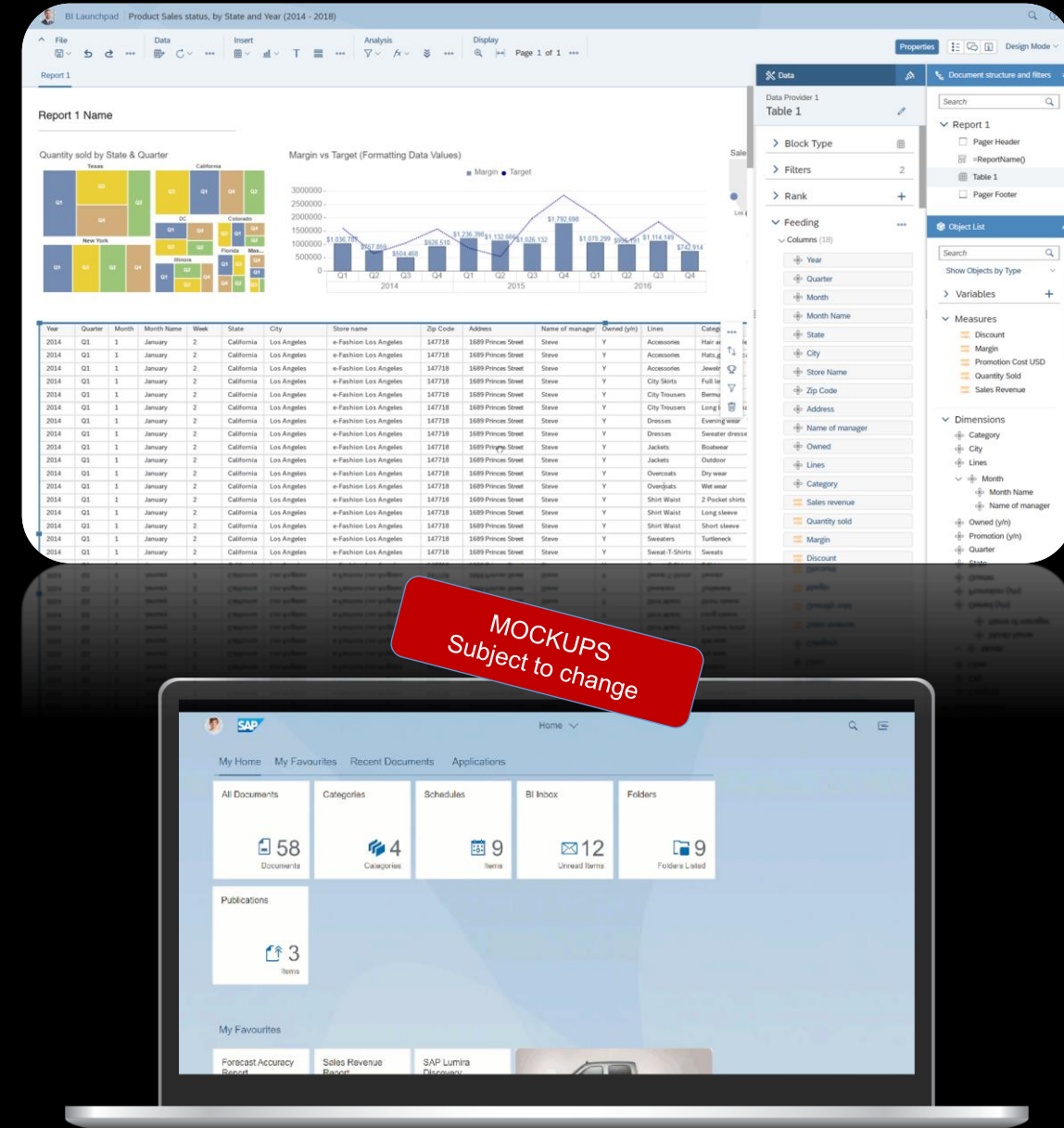
Extend Adoption Through Ease of Use

One Web Intelligence client

- One client for the web and desktop, for viewers and designers
- HTML5 (no Java required anymore), FIORI like
- Touch ready, Light menu bar (no double ribbon) + contextual widget
- New Formatting panel, with immediate result of contextual formatting actions
- New Build (Feeding) panel, for a “trial” experience when authoring and analyzing a report

Lumira Designer

- New Tile Component, Charting Improvements
- Export Enhancements (PDF, Excel)
- Restricted BW Keyfigures
- New Fiori like BI Launchpad**
 - 100% functional and compatible with existing content and authorizations
 - Full functional parity
 - Scheduling / Publication enhancement
 - Updated BI Workspace



Protecting your existing investments

Cloud Extension Policy



CLOUD EXTENSION POLICY

Conversion program to allow partial termination of on-premise maintenance when replaced with a new cloud contract

Reward for loyal customers to benefit from latest innovations in SAP Analytics Cloud



Customers get conversion credit for unused maintenance when purchasing cloud subscription

Savings from a new, less expensive Web Intelligence focused license



Savings can be used to start moving discovery use cases to the cloud

Iver.van.de.zand@sap.com

Find out more about Augmented Analytics

- [SAP Analytics Blog: Steer your Business with Next-Generation Augmented Analytics](#)
- [SAP Analytics Blog: If You Can't Trust a Machine, Then Who Can You Trust?](#)
- [SAP Analytics Blog: Solving Problems with Augmented Analytics vs Traditional Methods](#)
- [SAP Analytics Blog: Smart Discovery: Machine learning for business users](#)

Find out more about SAP Analytics Cloud

- [SAP Analytics Cloud Product Updates and Plan](#)
- [SAP Analytics Blog: Application Design – The other half of the brain](#)
- [SAP Analytics Blog: Design Your SAP Analytics Cloud Stories for an Engaging Experience on Mobile](#)

Find out more about Hybrid Analytics

- [SAP Analytics Cloud Data Connections](#)
- [SAP Cloud Extension Policy](#)
- [What's New with SAP BW/4HANA 2.0](#)

Find out more about Roadmaps

- [SAP Product Roadmaps](#)