



SIG Leads Event - Finance Expert Session

Transform Finance for the Digital Age

March 2021

PUBLIC



Insight and Automation are Driving Finance Transformation

Process and analysis improvements that reduce cost in dynamic business environments



Your hosts today ...



Katharina Reichert

Solution Management
Accounting & Central Finance



Christian Mnich

Solution Management
Treasury & Working Capital



Suraj Shah

Solution Management
Order to Cash & Receivables Mgt.



Kerim Hadzihamzic

Customer Office
Product Engineering - Finance & Risk

Key Value Drivers with SAP for Finance Transformation Success

Strategic, quantifiable and cross enterprise benefits

Value Lever



**Business
Insights**



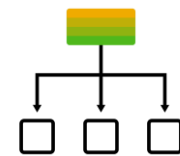
**Working
Capital**



**Cost of
Finance**



**IT
Cost**



**LoB
Integration**

Benefits

**Delivers Agility
and Analytics**

- S** Steer the business
- S** Capitalize on shifting markets trends

**Assurance that
stabilizes the
business**

- S** Automate manual tasks
- S** FTE's spend more time on investment
- Q** Reduce cash management and treasury cost

**Automation in
reporting and
compliance**

- Q** Lower cost of report generation
- Q** Faster financial reporting, forecasting and closing

**Simplification
& efficiency**

- S** Flexible landscape
- S** Agility for dynamic economies
- Q** Reduction in data footprint
- Q** Lower TCO

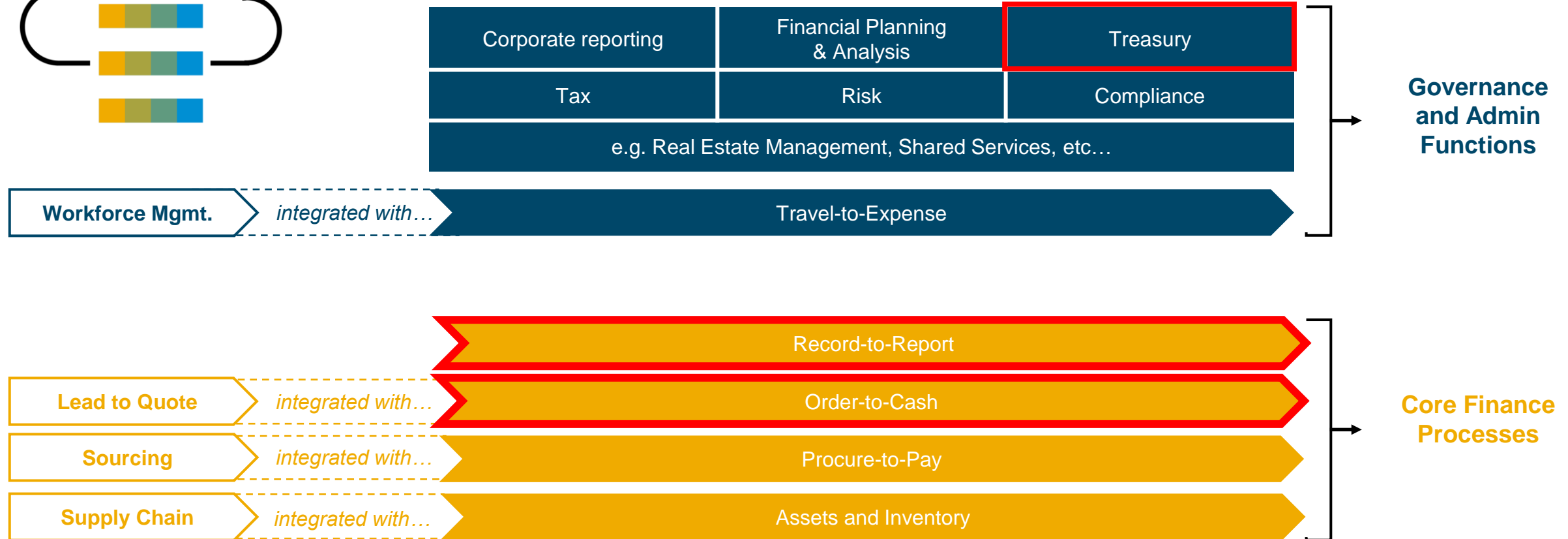
**Better
collaboration**

- S** Stronger stakeholder relationships
 - Vendor negotiation
 - Supply chain optimization
 - Customer service

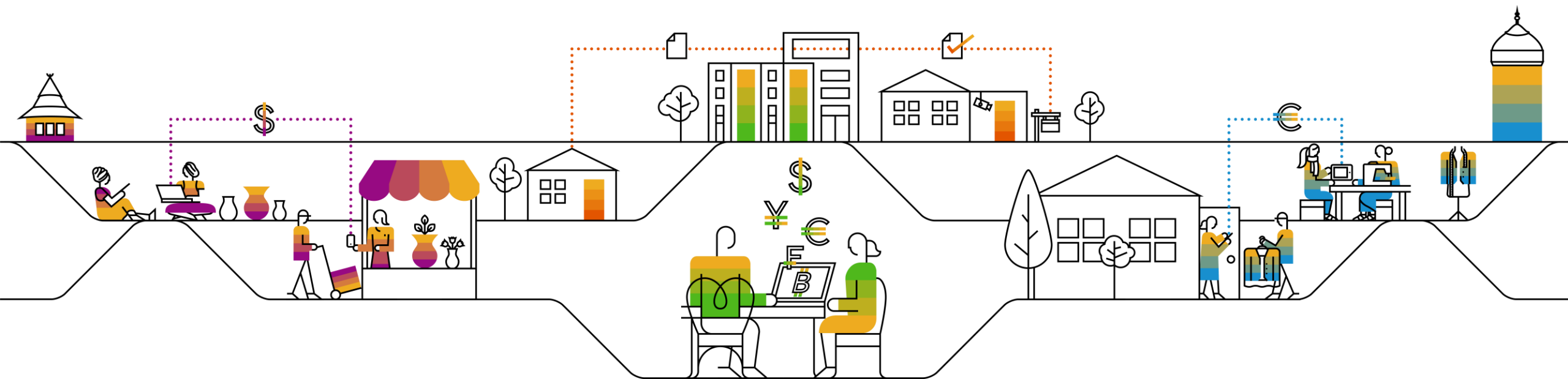
- S** Strategic
- Q** Quantitative Benefit

Complete Intelligent Finance Portfolio on SAP S/4HANA

Functional completeness in the cloud supporting all roles across finance, risk and tax



Record-to Report



Record-to-Report with SAP S/4HANA

Integrating the transactional and analytics world, based on a single source of truth

Finance Mission Control Center



SAP S/4HANA Cloud for Advanced Financial Closing



Orchestrate closing tasks
Execute automation jobs
Manage iRPA bots

BlackLine Solution Extensions, especially for mixed landscapes

SAP Account Substantiation and Automation; SAP Intercompany Financial Hub



Substantiate Balance sheet accounts
Match transactions & analyze variances
Automate journal entries

SAP S/4HANA Group Reporting

Reuse S/4 data model
Collect and validate data
Use powerful consolidation tools and analytics



Accruals Management

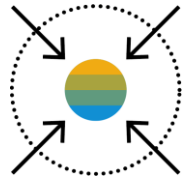
Goods and Invoice Receipt Reconciliation

Revenue Accounting

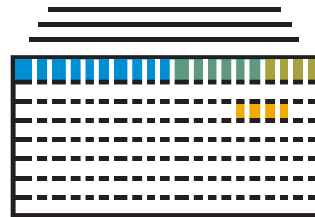
Intercompany Matching and Reconciliation

SAP S/4HANA Intelligent Innovations

Harmonize and standardize multi-system environment



SAP Central Finance



Universal Journal

- Currencies
- Parallel valuations
- Entity, BU, Group level
- Actual, Plan, Prediction, Simulation

SAP S/4HANA

SAP S/4HANA Cloud for advanced financial closing

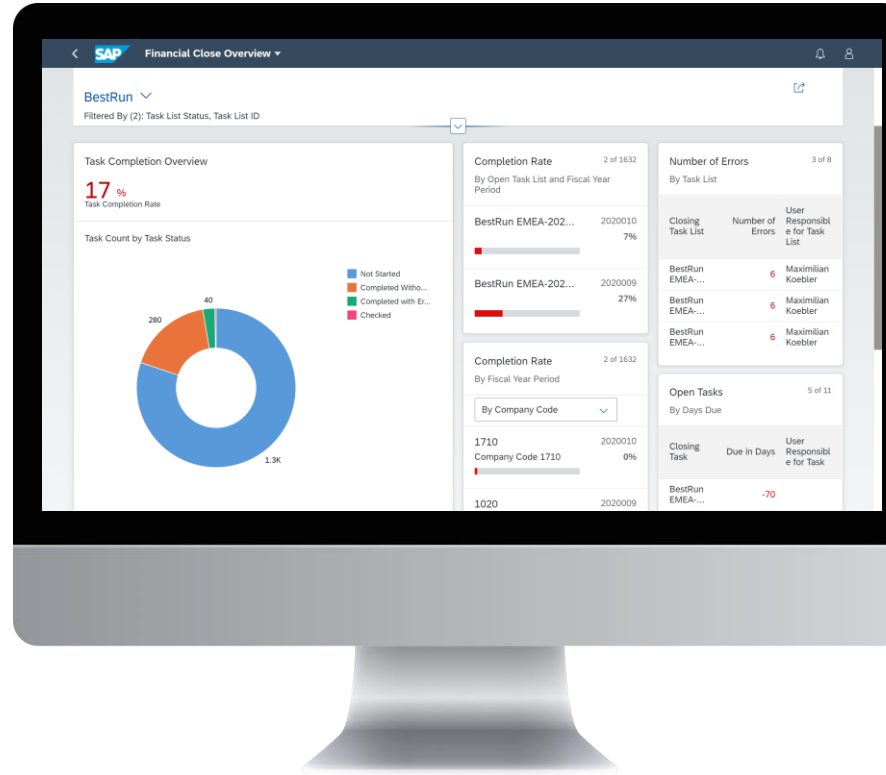
Perfect planning, automation and monitoring

Benefits

Faster Entity Close through improved closing efficiency

Governance and Compliance

Transparency and Insight



Capabilities

Automated closing tasks and workflow-supported intuitive apps for manual tasks
Collaboration, notifications, and escalations

Define a global game plan for the entity close; serialize for multiple org units and closing cycles

Audit trail, logging, documentation

Comprehensive analytics for real-time insight into the closing status

Monitoring for subsidiaries and headquarter

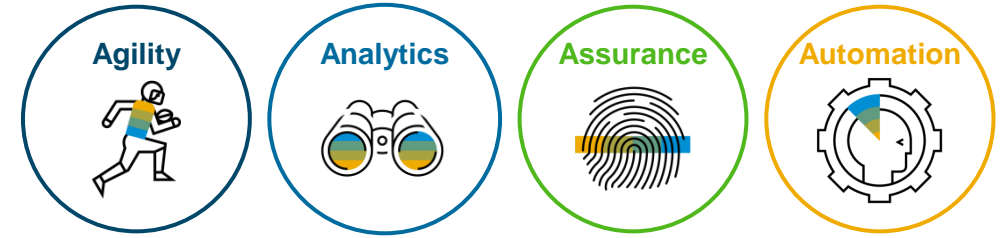
15-25%

Faster Closing cycle – while ensuring high-quality compliant results

Source: SAP Performance Benchmarking

Record-to-Report Optimization

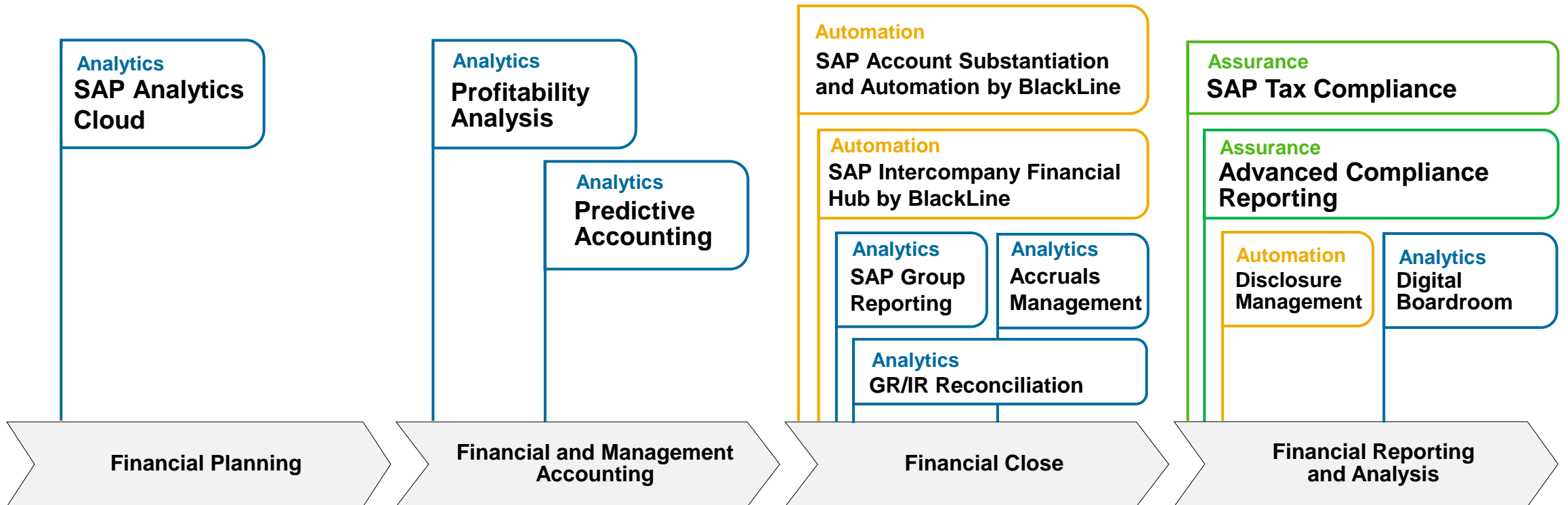
End-to-end process with related SAP capabilities



Automation

SAP S/4HANA for Advanced Financial Closing

Automation and Management across Record-to-Report





SAP S/4HANA Cloud for Advanced Financial Closing

Task template sets increase automation

Task Template Sets

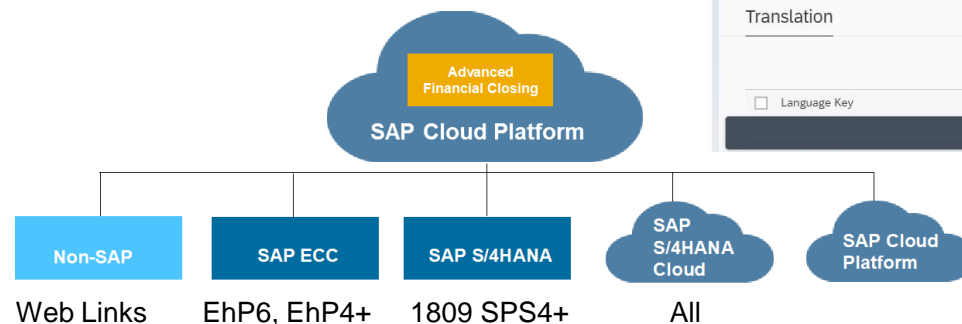
include standard closing steps for:

- General Ledger & Tax
- Payables / Receivables
- Fixed Asset Accounting
- Overhead Accounting
- Inventory Accounting
- Production Accounting
- Sales Accounting

Including all sequencing and dependencies

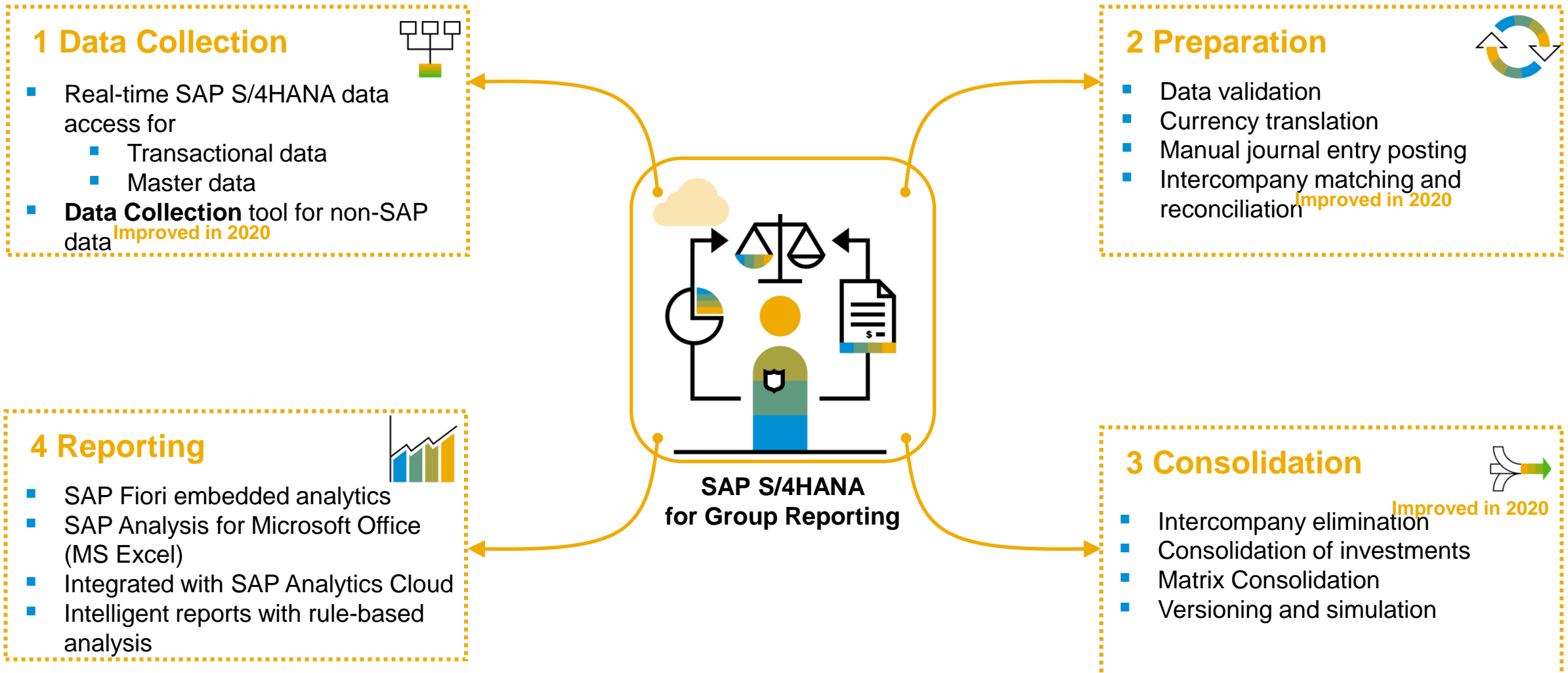
The screenshot displays the 'Define Closing Tasks' interface in SAP S/4HANA Cloud. The main area shows the 'Central Task Template' (0001) with a hierarchy structure. The 'Hierarchy Structure' tab is active, showing a tree view of tasks. The 'Translation' tab is also visible. The right sidebar shows 'Provisions for Doubtful Receivables' and 'Task Schedule' details.

Hierarchy Node	Org. Unit ...	Task Type	PL...	Responsible
0 (1811 Main tst recreated)	Client			
1 (Company Code 1010 -)	Company...			
53 (Provisions for Doubtful Receivables)		Job		
56 (Train the model for the GRIR status...)		FIORI Job		
64 (Define Distribution Rules for AuC)		FIORI Applicati...		
87 (Display Tax Information per Country)		FIORI Applicati...		
103 (Enter Reference Interest Values)		FIORI Applicati...		
177 (Provisions for Doubtful Receivabl...)		Job		
180 (Train the model for the GRIR stat...)		FIORI Job		
188 (Define Distribution Rules for AuC)		FIORI Applicati...		
211 (Display Tax Information per Count...)		FIORI Applicati...		
227 (Enter Reference Interest Values)		FIORI Applicati...		
301 (Provisions for Doubtful Receivabl...)		Job		
304 (Train the model for the GRIR stat...)		FIORI Job		



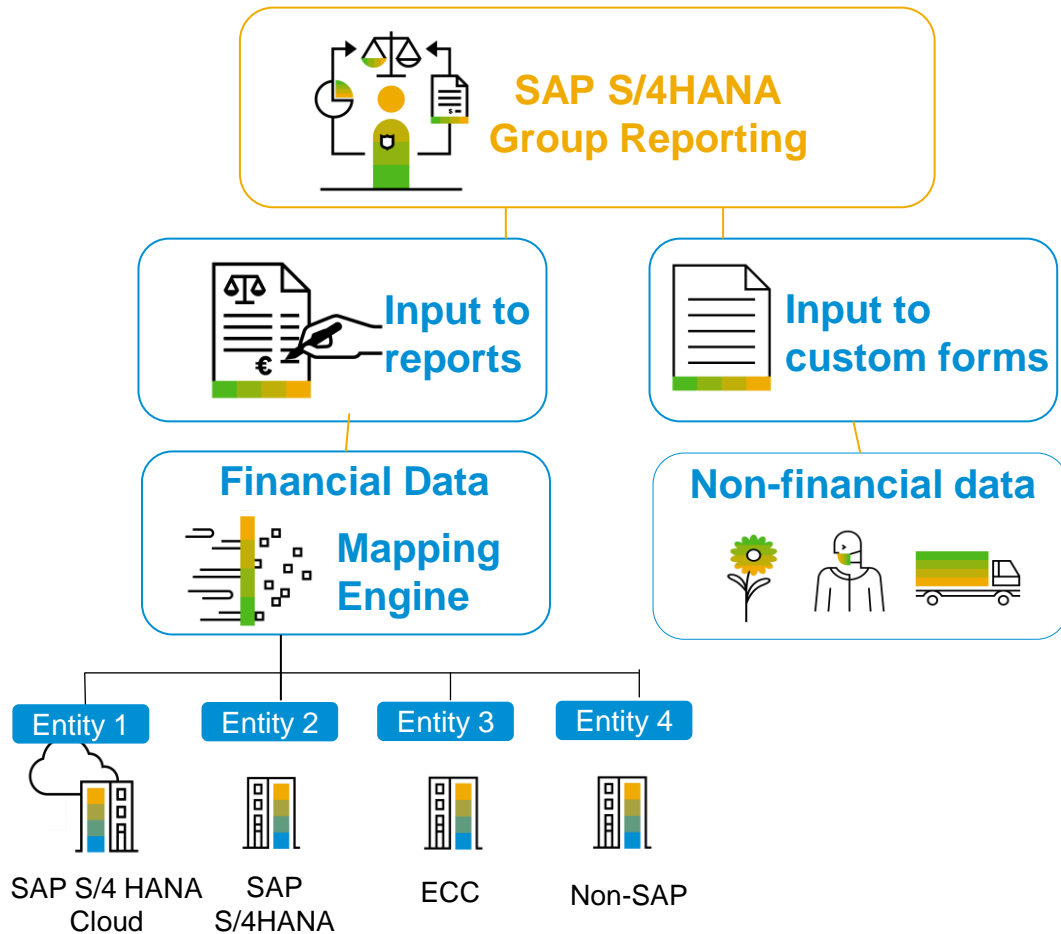
SAP S/4HANA Group Reporting

Leverage on integrated platform and simplify the entire consolidation process



SAP Group Reporting Data Collection

Sophisticated mapping engine enabling further streamline of the consolidation process



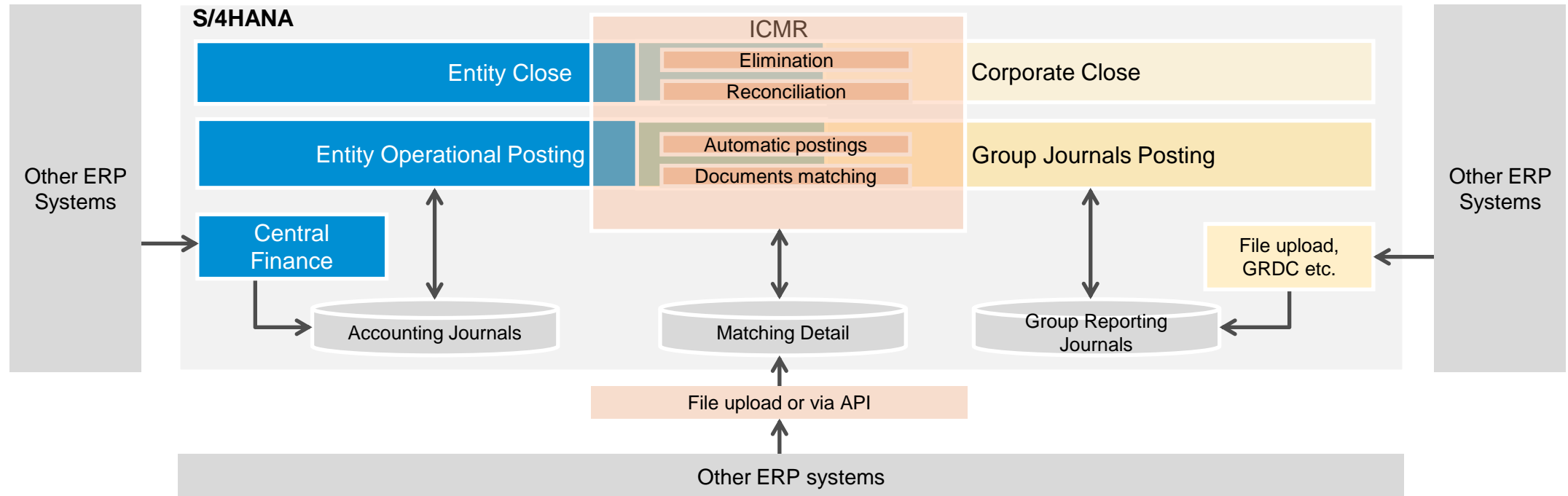
- ✓ Import of local accounting data from non-integrated entities via File or API
- ✓ Non-financial data is input to forms tailored to customer's reporting needs and posted automatically

Recent Improvements

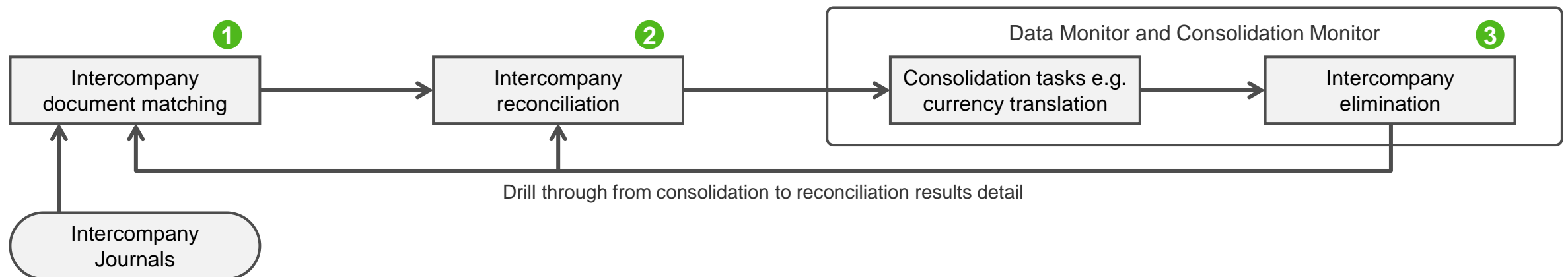
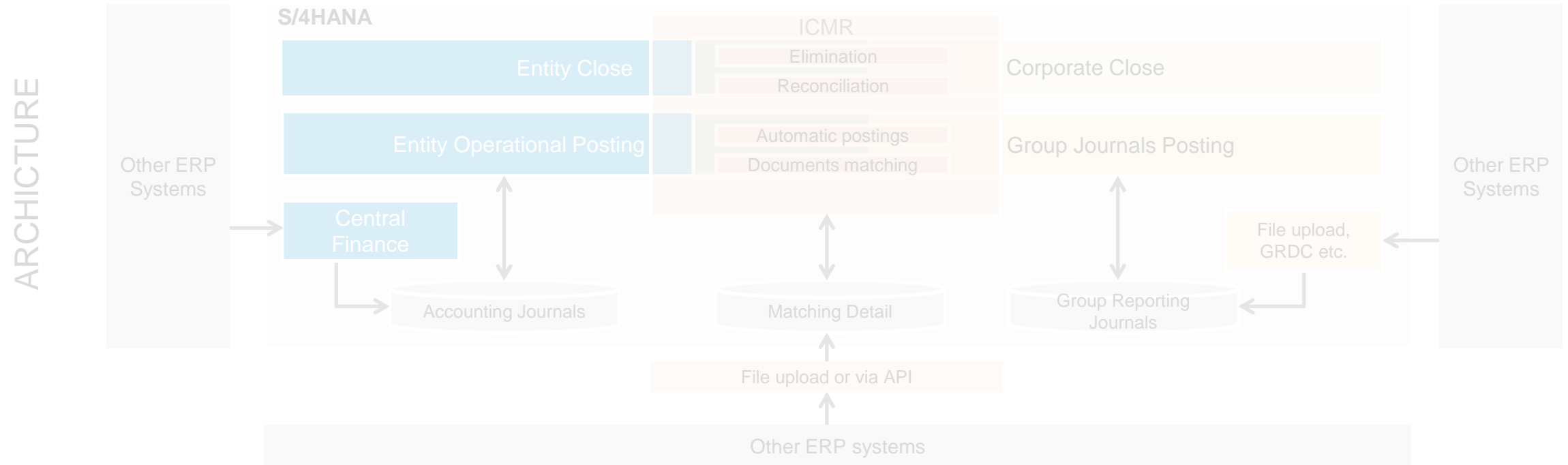
- ✓ Improved Data Mapping from ACDOCA to ACDOCU
- ✓ Improved integration with both S/4HANA on-premise & cloud
- ✓ New UI and improved usability for side-by-side use
- ✓ Consolidation of Investments data entry report
- ✓ New data mapping templates
- ✓ Central Cloud storage for source data mapping files

SAP's improved Intercompany Matching and Reconciliation (ICMR) process

ARCHITECTURE



SAP's improved Intercompany Matching and Reconciliation (ICMR) process



New “manage reconciliation close” process triggers eliminations

Standard*

Reconciliation Case: *
SF001 (Reconciliation Case for accounting model: IC...)

Fiscal Year Period: *
007.2020

Company:

Trading Partner:

Adapt Filters (2)

Items (17)

<input type="checkbox"/> Company	Trading Partner	Difference	Elimination Status	Reconciliation Close Status	
<input type="checkbox"/> 1010 (Company 1010)	1010 (Company 1010)	-493,451.58 USD	Initial	Open	>
<input type="checkbox"/> 1020 (Company 1010)	1010 (Company 1010)	2,781.93 USD	Initial	Open	>
<input type="checkbox"/> 1020 (Company 1010)	1020 (Company 1010)	600.00 USD	Initial	Open	>
<input type="checkbox"/> 1610 (Company 1610)	1610 (Company 1610)	177,683.64 USD	Initial	Open	>
<input type="checkbox"/> 1710 (Company 1710)	1010 (Company 1010)	3,378.75 USD	Initial	Open	>
<input type="checkbox"/> 2110 (Company 2110)	2110 (Company 2110)	-16.12 USD	Initial	Open	>

SF001 (Reconciliation Case for accounting model: IC Trading) : 1010 (IC Trading All AR/AP Relevant Accounts)

Fiscal Year Period: 007.2020

Reconciliation Close Status: **Open**

Reconciliation Overview

Leading Unit	Partner Unit	Difference
Company: 1010 (Company 1010) Data Cutoff At: 24.06.2020, 08:25 Amnt in Global Currency: 0.00 USD	Trading Partner: 1010 (Company 1010) Data Cutoff At: 24.06.2020, 08:25 Amnt in Global Currency: -493,451.58 USD	-493,451.58 USD

Difference Breakdown by Reason Code

Difference Reason Code	Leading Unit Amount	Partner Unit Amount	Difference	Comments
S00 (Data matched without further action)	0.00 USD	-493,966.98 USD		
S10 (Matched within tolerance, comment required)	0.00 USD	793.92 USD		
S13 (Matched within tolerance, with auto-adjustment for variances)	0.00 USD	-278.52 USD		
Total:	0.00 USD	-493,451.58 USD		

Close Reopen

Navigate to details

Printable reconciliation statement

Interunit Reconciliation Statement

Reconciliation Case: SF001 Reconciliation Case for accounting model: IC Trading

Reconciliation Amount Type: Year to Date

Reconciliation Period: 007.2020

Leading Unit	1010	Partner Unit	1010
Description	Company 1010	Description	Company 1010
Data Cutoff Time	Jun 24, 2020 8:25:29 AM	Data Cutoff Time	Jun 24, 2020 8:25:29 AM
Currency	USD	Currency	USD
Amount	0.00	Amount	-493,451.58

Difference Amount: -493,451.58 USD

Difference Breakdown by Reason Code

ID	Difference Reason Code	Currency	Leading Unit	Partner Unit	Difference	Note
S00	Data matched without further action	USD	0.00	-493,966.98	-493,966.98	
S10	Matched within tolerance, comment required	USD	0.00	793.92	793.92	
S13	Matched within tolerance, with auto-adjustment for variances	USD	0.00	-278.52	-278.52	

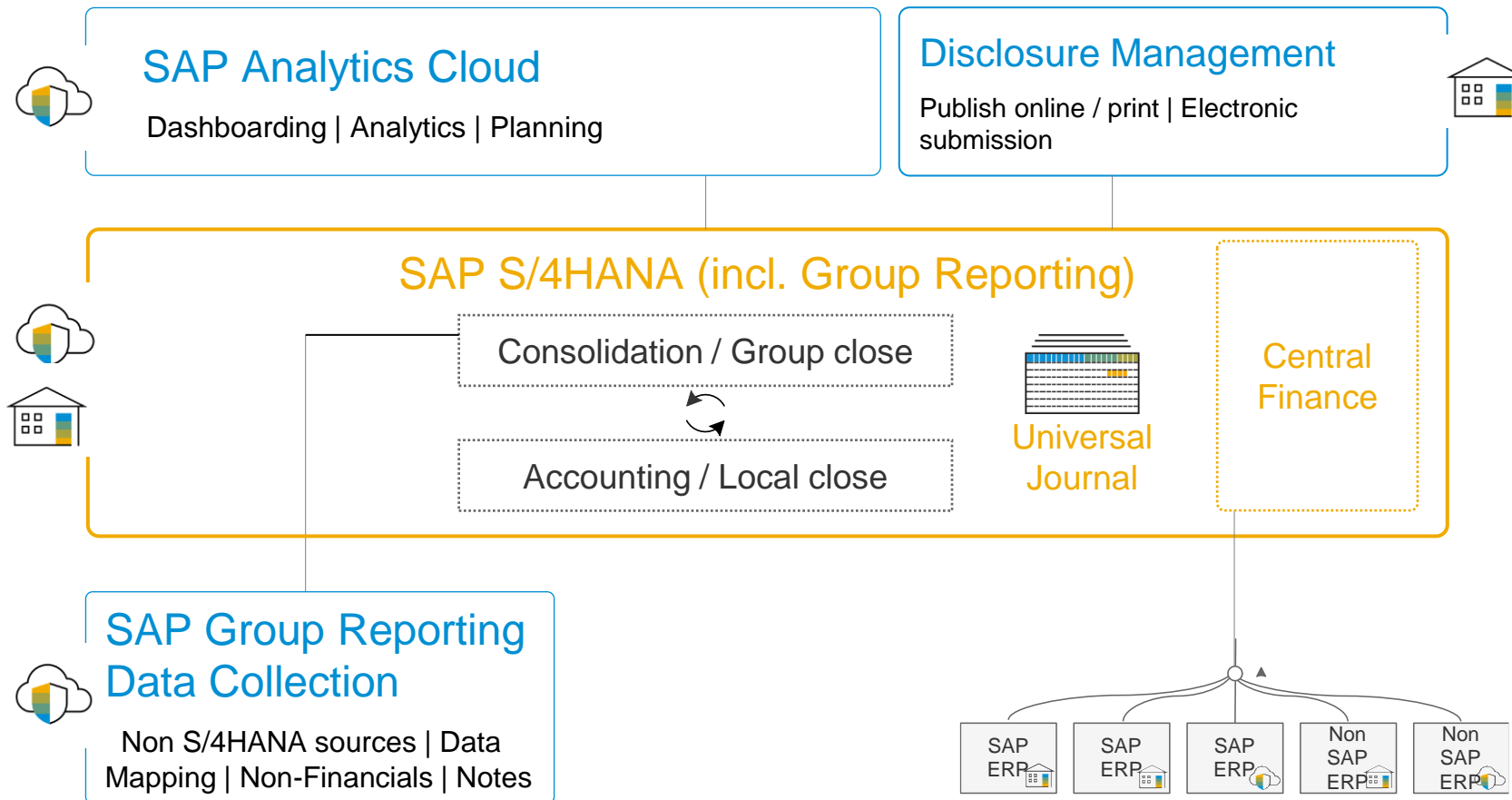
3 Can explain differences by reason code and drill through to line items

1 Close/reopen the reconciliation status for paired units.

2 Trigger approval workflow and print reconciliation statement.

SAP S/4HANA Group Reporting

Group Close Reimagined – Building on Local Close



SAP Disclosure Management

Reduce the time, risk and cost of regulatory disclosures



Improve speed and flexibility

- Accelerate the generation of disclosure statements
- Integrate data for a single view of the organization

Foster collaboration

- Assign disclosure responsibility to distributed teams
- Automate integration and data flow
- Designed for ownership by finance professionals

Create compliance and control

- Produce trusted financial statements In-house
- Support multiple financial and regulatory statements
- Enable creation of XBRL / iXBRL based statements

New in 2020:

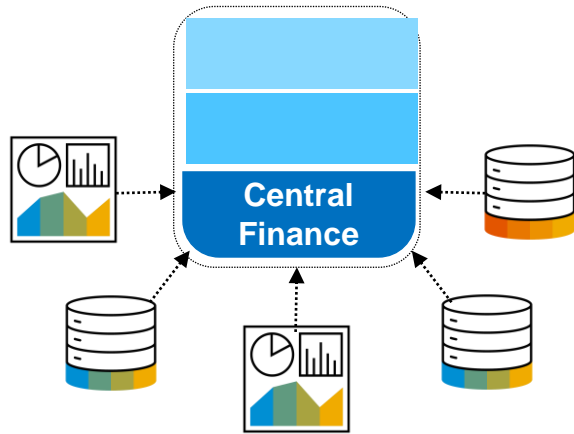
- Import data from **SAP S/4HANA Group Reporting**

The screenshot displays the SAP Disclosure Management web interface. At the top, the user is logged in as 'Martin John (Editor1) Units' with 'New messages 0'. The navigation bar includes tabs for Report, Favorites, Monitoring, Settings, XBRL Factory, Transport, Security, and Administration. Below this, filters for 'Period: The Group 2018' and 'Report: Annual Report' are visible. A secondary navigation bar contains Cockpit, General, Templates, Content refresh, Revisions, History, Configuration, Workflow, and Permissions. The main content area is divided into three sections: a left-hand tree view of the 'Annual Report' structure (including Cover page, Blank page, Contents, CEO Message, Corporate Governance Statement, CSR strategy, Human resources, Research and Development, Financial Statements, Income Statement, Statement of Other Comprehensive Income, and Statement of Financial Position), a central preview pane showing the 'Annual Report' document (Microsoft Word, 2.2 MByte, Revision 3) with buttons for Create, Edit, View, Write Back, Lock, Unlock, and Rollout templates, and a right-hand 'Details' panel showing report type (Document), entity (THE GROUP), ID (142), last modified date (09/24/2019 16:01:42), user (Martin John), and comment (Document generated). Below these sections, a preview of the 'Annual Report Version 41 (i6).DOCX' is shown in 'Compatibility Mode' within a Microsoft Word window. The preview displays a multi-page document with various sections, including 'OUR GOVERNANCE AND RESPONSIBILITY', 'OUR STRATEGY AND FUTURE', 'RESEARCH AND DEVELOPMENT', and 'CONSOLIDATED STATEMENTS OF FINANCIAL POSITION'. The bottom status bar indicates 'Page 1 of 31', 'Words: 6,704', 'English (U.S.)', and the system time '3:03 PM'.



Flexible Approaches to a New System of Record

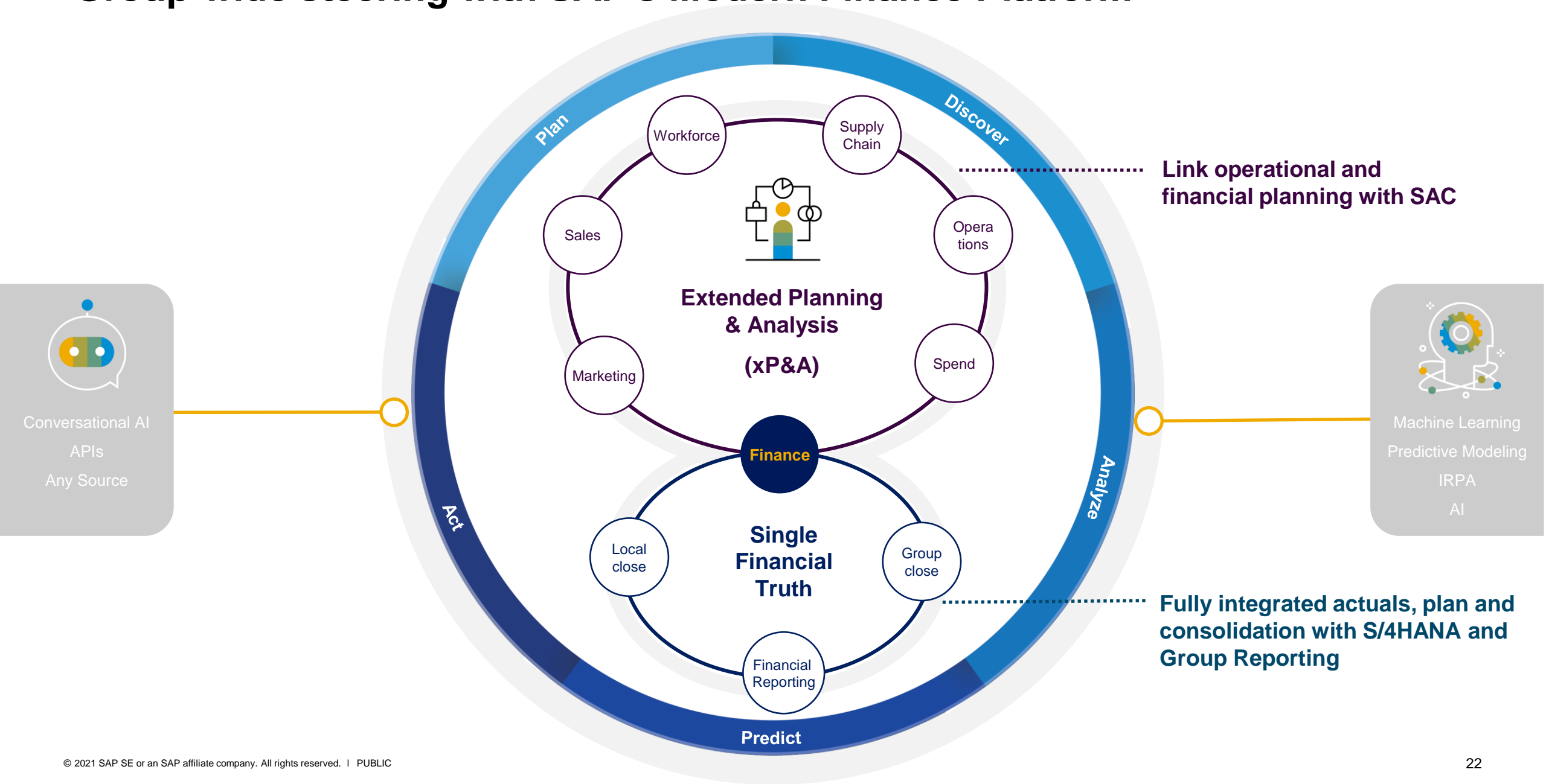
Central Finance helps you adopt finance innovation at your own speed



**Central Finance
Deployment**

- SAP's central finance foundation has become the de-facto approach for enterprises to move from a multi-system landscape to a central S/4HANA instance
- Key updates: S/4HANA OP 2020
 - Magnitude, a integrated set of capabilities for SAP and non-SAP ERP master data harmonization
 - Central Document Splitting
 - Central Budgeting and Availability Control
 - New 3rd Party Interface to reflect changes on financial documents

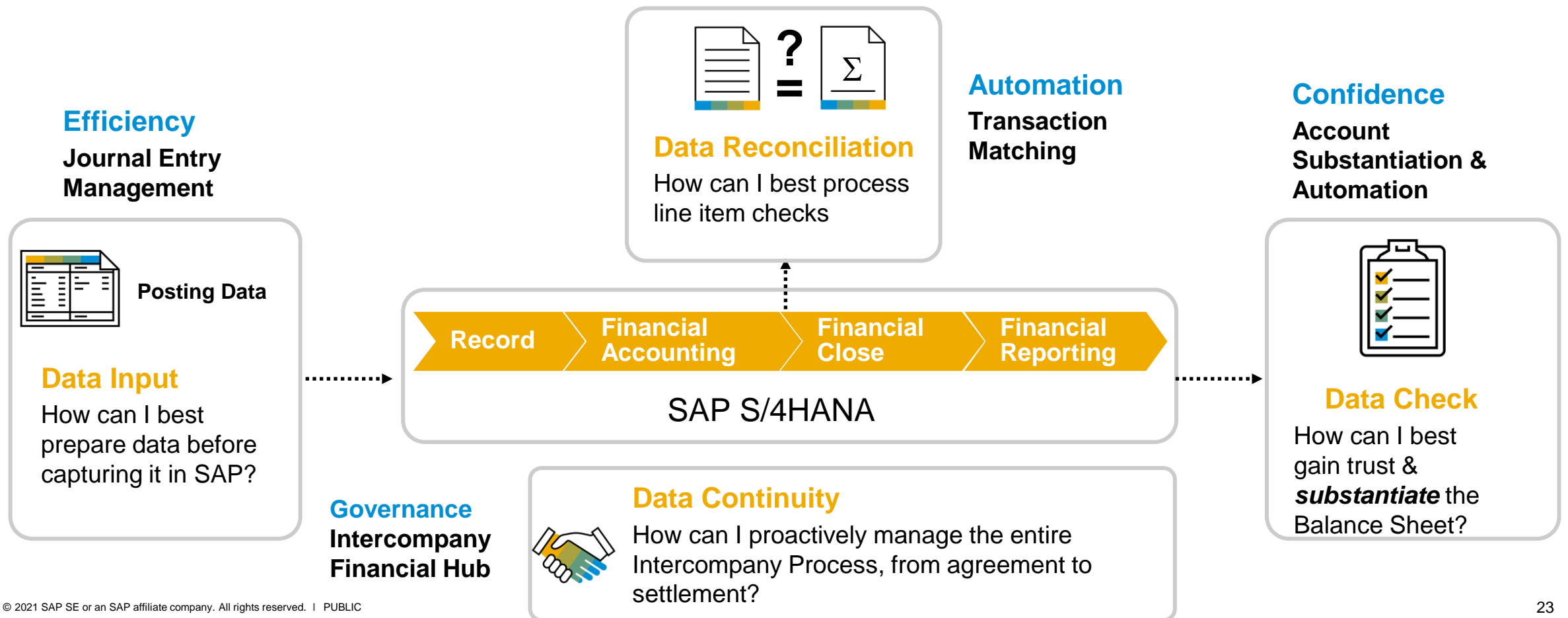
Group-wide steering with SAP's Modern Finance Platform



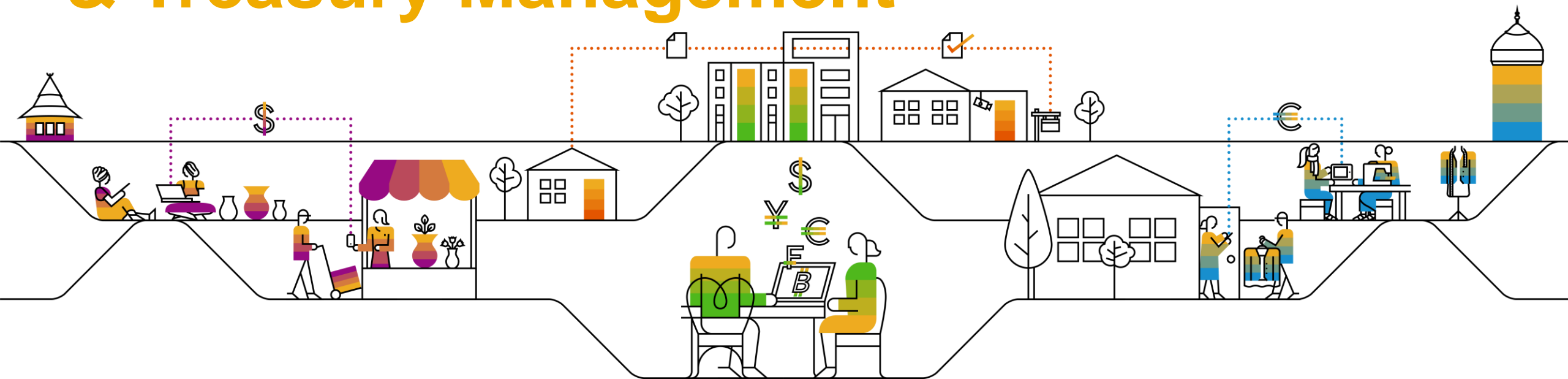
BlackLine complements SAP S/4HANA and other ERP Systems

Delivering added value for a more productive and secure financial close

- Efficiency in Data Input with **Journal Entry Management**
- Advanced Data Processing Automation with **Transaction Matching**
- Confidence in Balance Sheet data with **Account Substantiation & Automation**
- Governance across the end to end **Intercompany** process

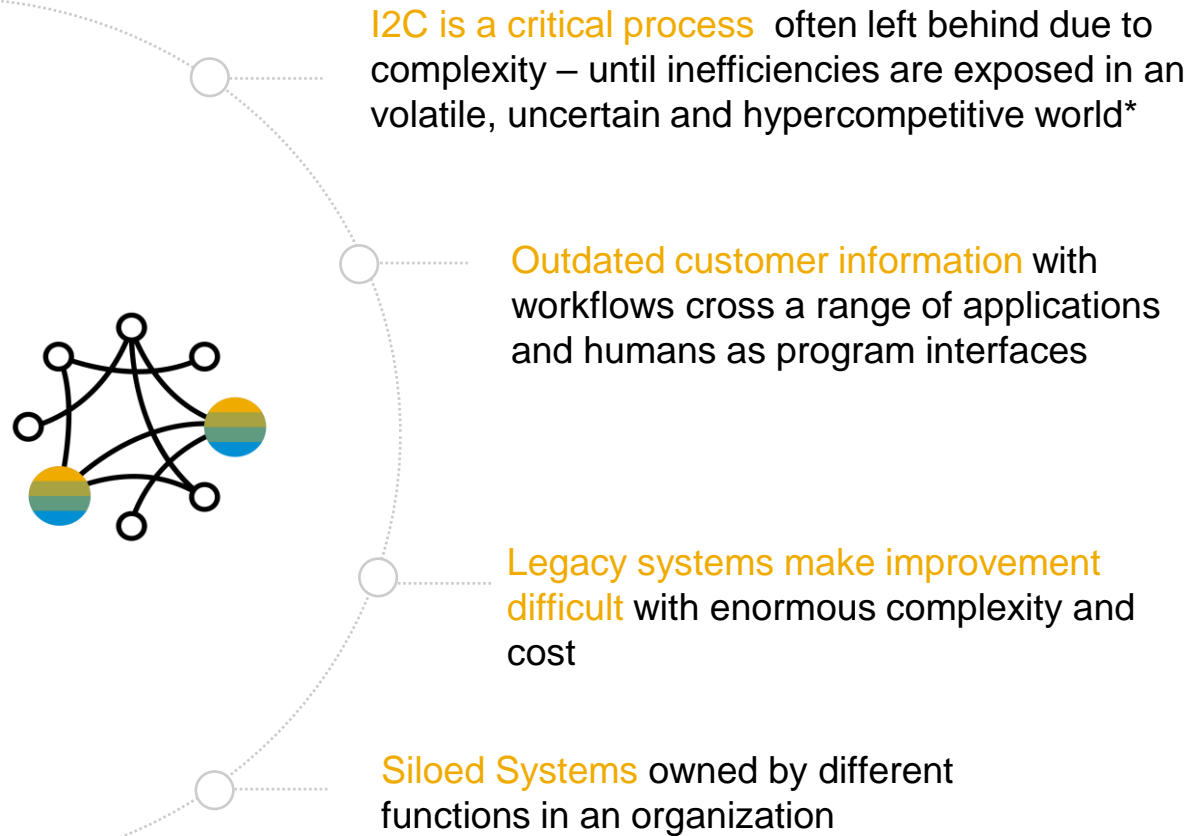


Invoice-to-Cash & Treasury Management

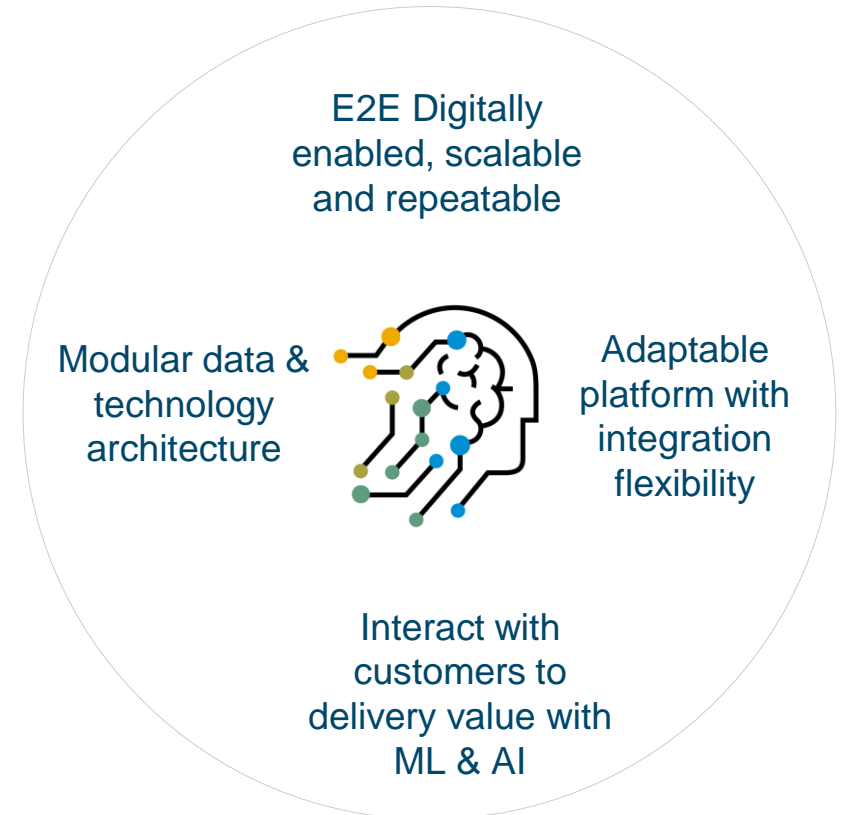


Invoice to Cash – The Future

From siloed systems to digitally enabled platform

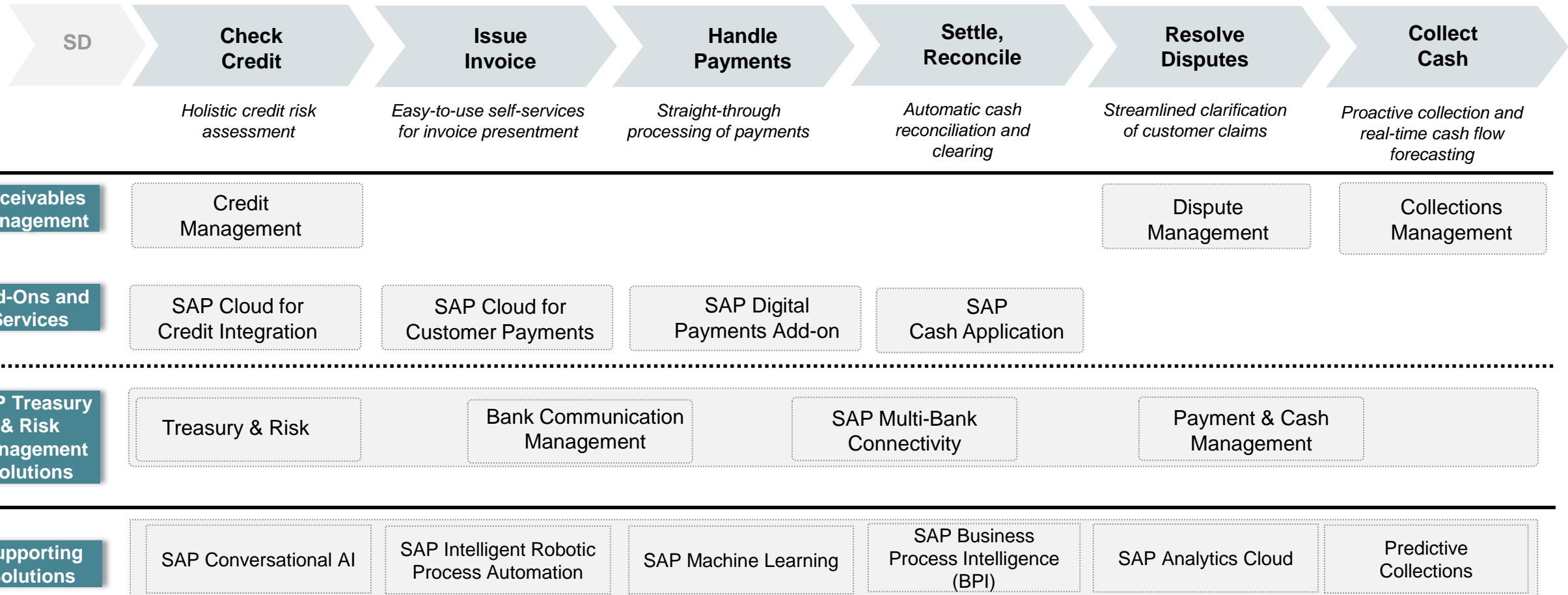


A State-of-the-art I2C platform, digitally enabled processes – modular approach and unleashes the potential of humans and machines



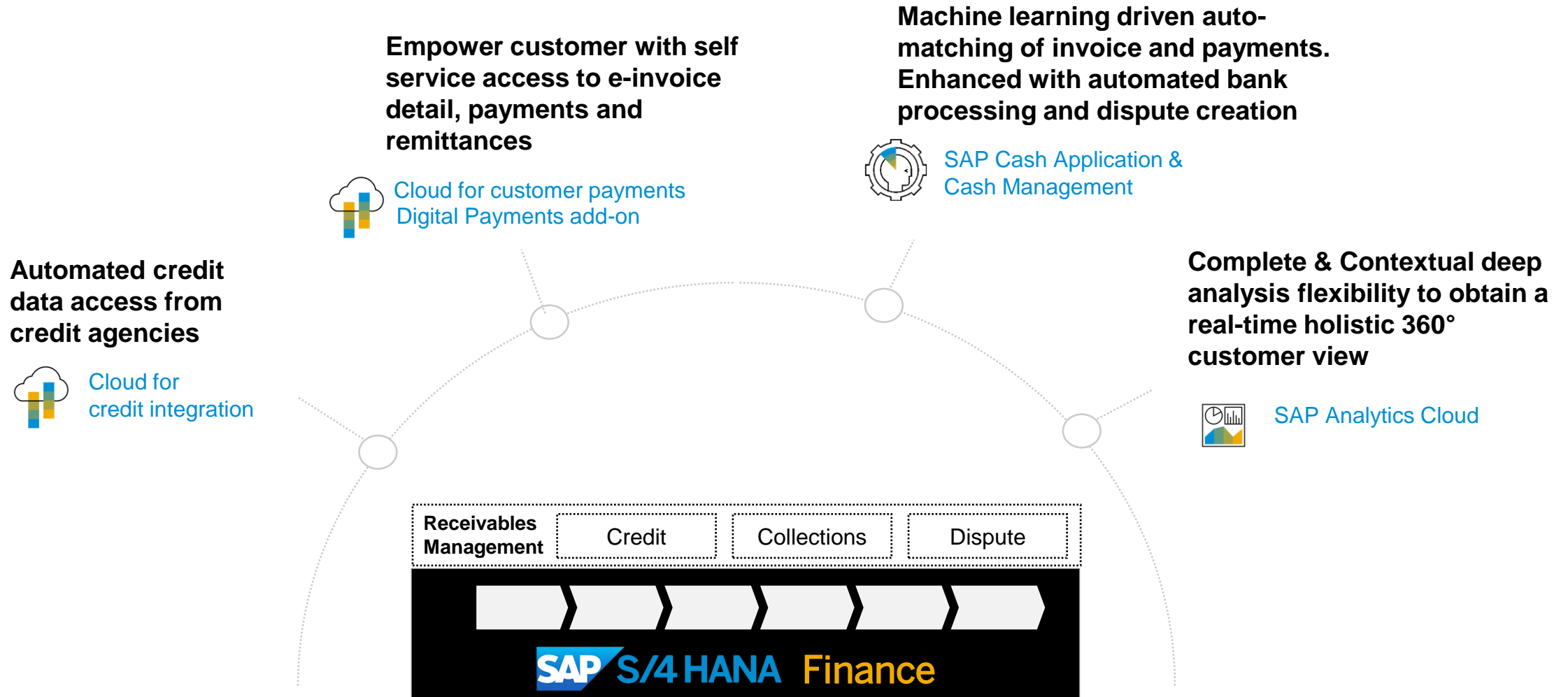
Intelligent Invoice to Cash & Receivables Management

Automation across entire Financial Supply Chain



Enabling a complete digitally enabled Invoice to Cash Platform

Core I2C components with modular extensions



What's New with SAP S/4HANA for Invoice to Cash

Innovation in SAP S/4HANA

Process Receivables

- 360° customer collections overview
- Facilitate inbound / outbound calls

Invoice Items (322)	Standard	Journal Entry	Posting Key	Net Due Date	Original Amount	Open Amount	Paid Amount	Credited Amount	Billing Document	Resubmission Date	Dispute Case	Promise to Pay
90173605	IS	Invoice	12090020 (75)	16,280.00 USD	16,280.00 USD	0.00 USD	0.00 USD	0.00 USD	90173605			
90173627	IS	Invoice	12090020 (75)	8,038.00 USD	8,038.00 USD	0.00 USD	0.00 USD	0.00 USD	90173627			
90173648	IS	Invoice	12090020 (75)	68,736.00 USD	68,736.00 USD	0.00 USD	0.00 USD	0.00 USD	90173648			
90173676	IS	Invoice	12090020 (75)	20,425.00 USD	20,425.00 USD	0.00 USD	0.00 USD	0.00 USD	90173676			
90173657	IS	Invoice	12090020 (75)	9,534.00 USD	9,534.00 USD	0.00 USD	0.00 USD	0.00 USD	90173657			
90173669	IS	Invoice	12090020 (75)	1,330.00 USD	1,330.00 USD	0.00 USD	0.00 USD	0.00 USD	90173669			
90173677	IS	Invoice	12090020 (75)	9,385.00 USD	9,385.00 USD	0.00 USD	0.00 USD	0.00 USD	90173677			
90173682	IS	Invoice	12090020 (75)	17,380.00 USD	17,380.00 USD	0.00 USD	0.00 USD	0.00 USD	90173682			

Manage Dispute Cases

- Manage and edit dispute cases
- Manage customer correspondence

Case ID	Case Title	Customer	Company Code	Disputed Amount	Priority	Reason	Processor	Coordinator	Person Responsible	Status
1000000001	1710001	Domestic US Customer 1	1710	54.00 USD	0007 (Pricing Issue)					10 (New)
1000000002	1710001	Domestic US Customer 1	1710	666.00 USD	0007 (Pricing Issue)		Daniel Jones	Daniel Jones		10 (New)
1000000003	1710001	Domestic US Customer 1	1710	6,000.00 USD	0007 (Pricing Issue)		Daniel Jones	Daniel Jones		10 (New)
1000000004	1710001	Domestic US Customer 1	1710	38.00 USD	0001 (Damaged Goods)		Daniel Jones	Daniel Jones		10 (New)
1000000005	1710001	Domestic US Customer 1	1710	200.00 USD	High	0010 (Wrong product)	Daniel Jones	Daniel Jones		20 (In Process)
1000000006	1710001	Domestic US Customer 1	1710	700.00 USD	0007 (Pricing Issue)		Daniel Jones	Daniel Jones		10 (New)
1000000007	1710001	Domestic US Customer 1	1710	120.00 USD	0008 (Wrong rebate terms)		Daniel Jones	Daniel Jones		10 (New)
1000000008	1710001	Domestic US Customer 1	1710	250.00 USD	0001 (Damaged Goods)		Daniel Jones	Daniel Jones		10 (New)
1000000009	1710001	Domestic US Customer 1	1710	1,000.00 USD	0001 (Damaged Goods)		Daniel Jones	Daniel Jones		10 (New)

Case Overview	Assignments & Agreements	Amounts	Contact Information	Related Objects	Change Protocol	Notes	Attachments
General Data Case Title: - Customer: 17100001 (Domestic US Customer 1) Company Code: 1710 (BeitRun US)	Case Details Category: - Status: 10 (New) Reason: 0007 (Pricing Issue) Escalation Reason: - Root Cause Code: -	Amounts Disputed Amount: 700.00 USD	Assignments & Agreements Process Assignees: - Service Level Agreements: -				

Credit Management

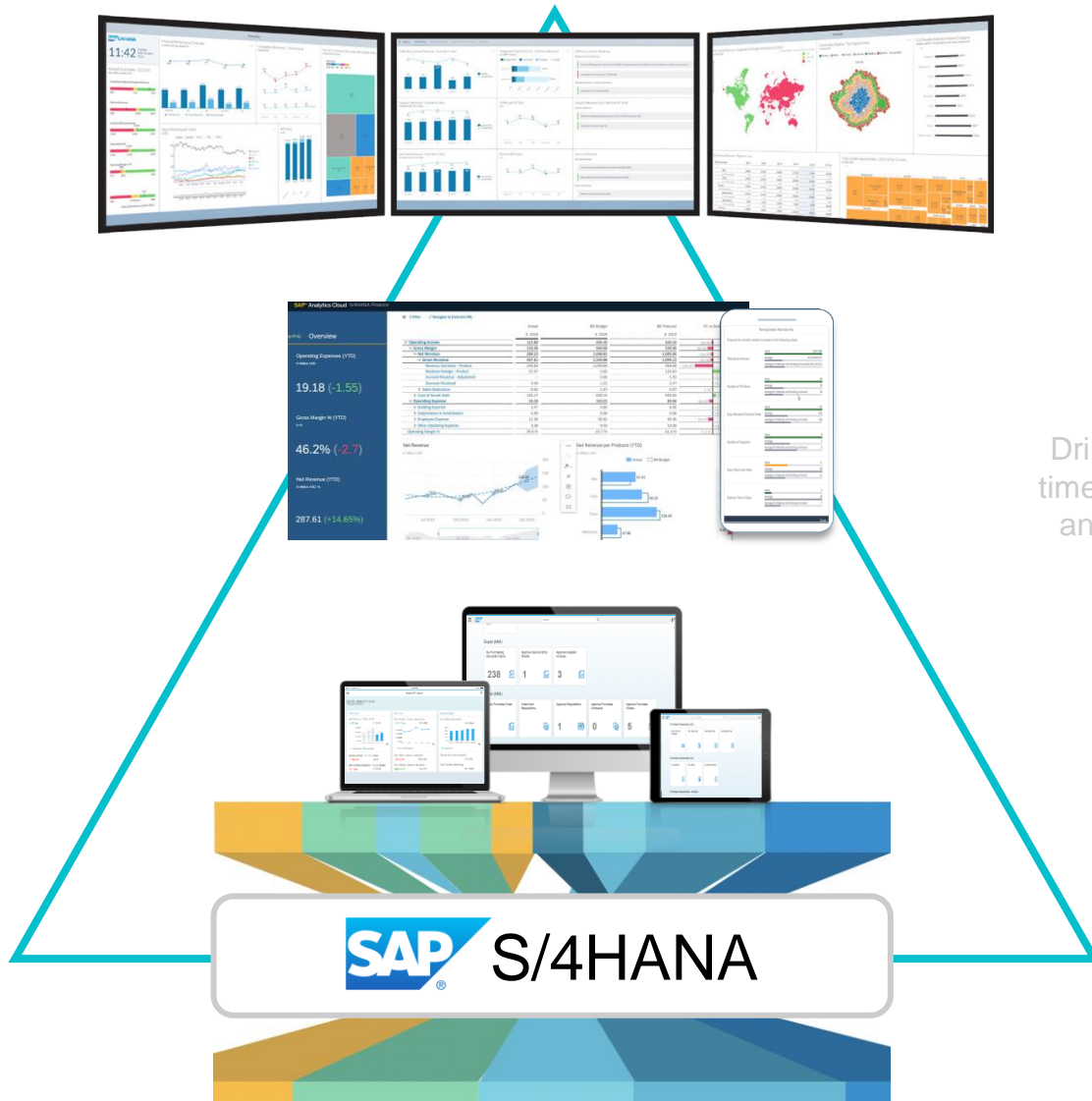
- 360° customer credit
- Display Credit Exposure & Credit Account Data

Sales Area	Overall Status	Overall Blocking Status	Credit Limit Utilization	Net Sales Volume (YTD)	Net Amount
Sales Organization: Dom. Sales Org US (1710) Distribution Channel: Direct Sales (10) Division: Product Division 00 (00)	Not Relevant	Not Blocked	25.88% 55.0M USD	4,107,489.40 USD	0.00 USD

Business Partner	Global Credit Data
Inlandskunde DE 1 Name2 Address: Postfach 24 Nr 122491 Inlandskunde 1 Country: DE (Germany) Utilization %: 25.8	Risk Class: 10 (High Default Risk) Credit Limit: 50,000,000.00 USD Credit Check Rule: 10 (Credit Limit Check Only (Standard)) Credit Insurance: 1 (Corporate)

- Manage Promise to Pay
- Manage Resubmissions
- Manage Collection Contact Persons

Analytics with SAP – Invoice to Cash



SAP Analytics Cloud & Digital Boardroom – BI, Planning and Predictive



- Real time view of business KPI's with advanced and augmented analytics
- Invoice to Cash Analytics with content for Credit Management, Collections Management & Disputes Management

Drill down in real time, analyse data and take action



SAP S/4HANA Analytics

(Process driven analytics – Account Receivables, Cash Management)

- Embedded KPI's to push insight and support decisions
- Analytics content by process with transaction drill through

O2C – End to End Process Automation

Automate Bank Statement Processing

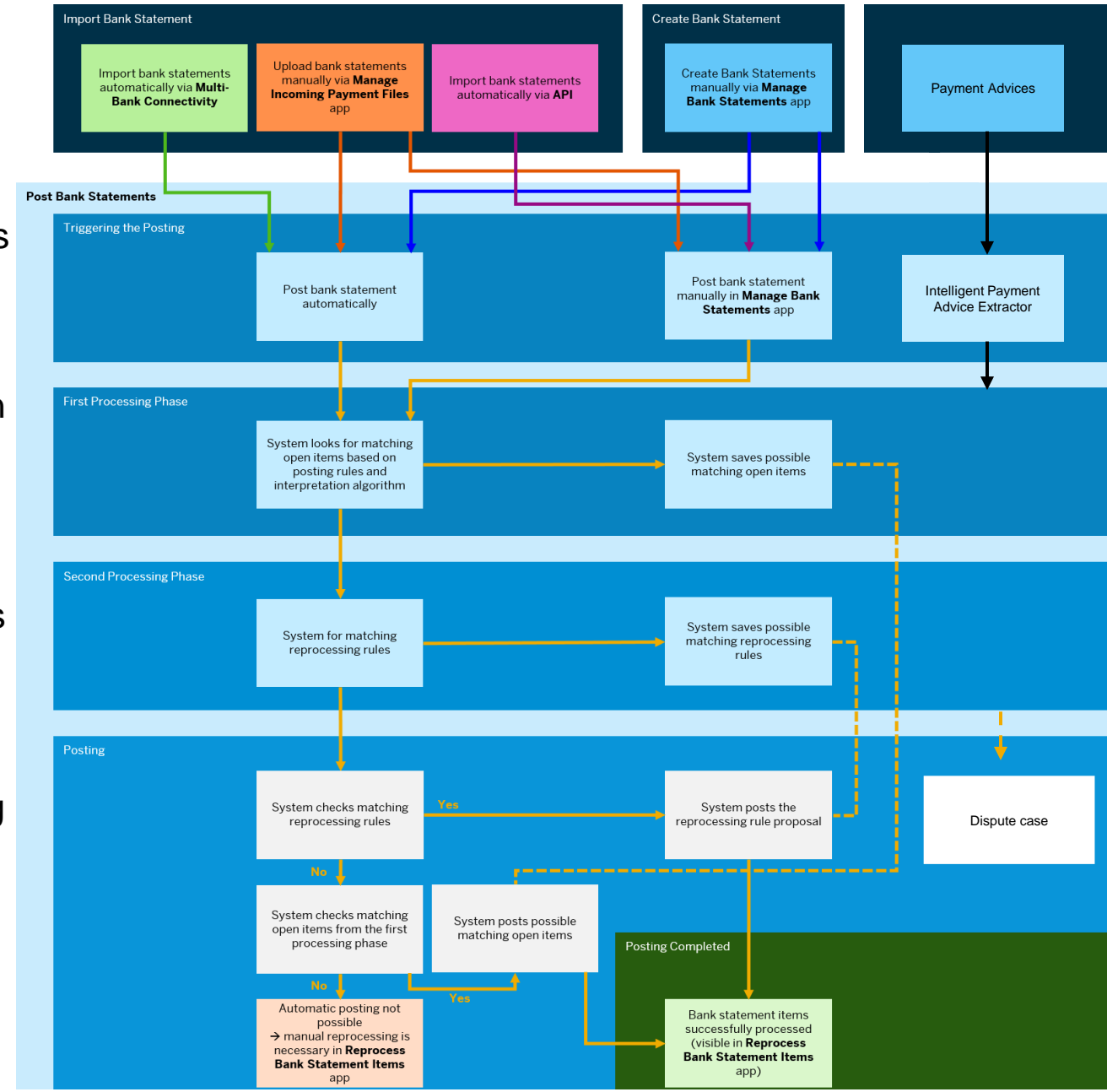
Bank Statement Received on a Regular Basis

Initial Phase – Process Bank Statement based on posting rules and interpretation algorithm

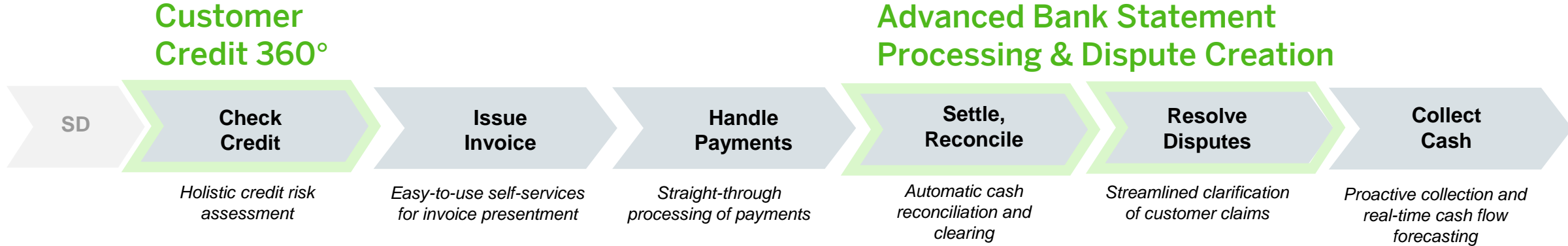
Second Phase – Finds reprocessing rule with conditions applicable to bank statement items

Posting Phase – Performs actions defined in the reprocessing rule and intelligent line item matching e.g GL Postings, AR Postings.

Exception handling – Payment differences automates dispute cases

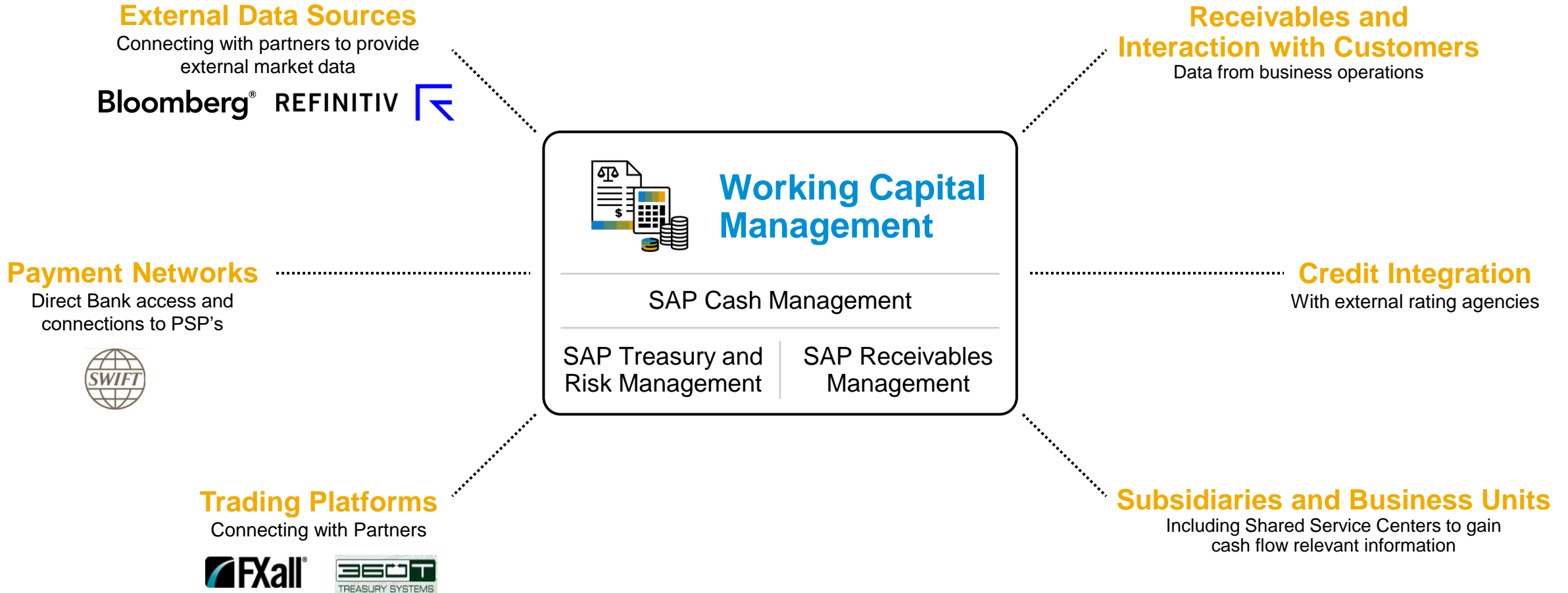


Demo



Manage and Optimize your Working Capital with SAP

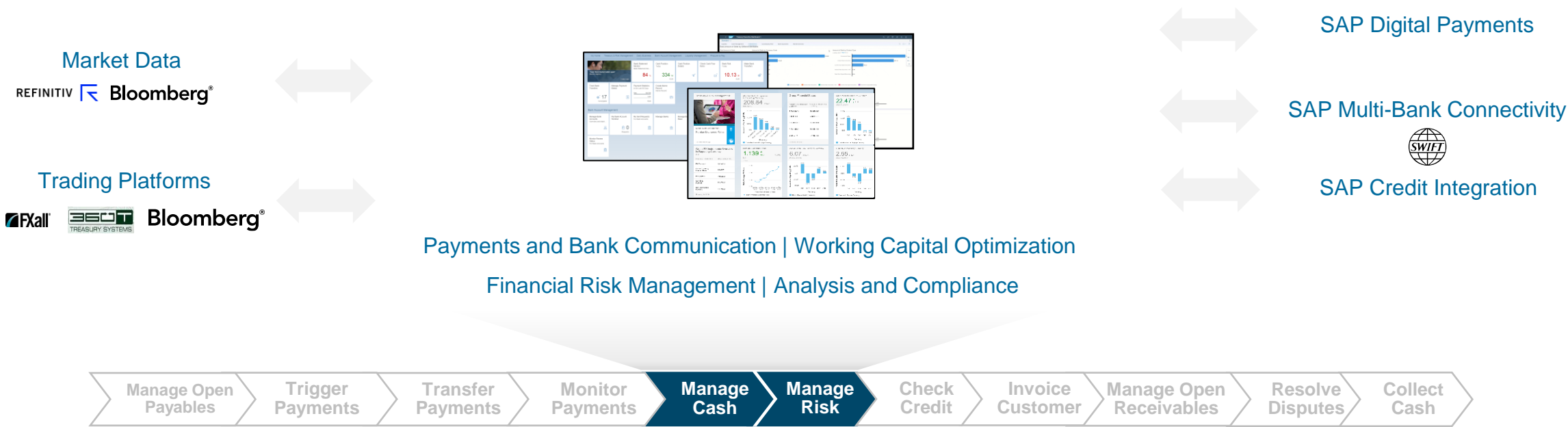
Centralized operations to analyze, act and respond to pressing challenges



SAP Treasury management

Sufficient support of Treasury systems is a key advantage

SAP Treasury Management



Instant cash flow forecasting
to optimize Working Capital
and cash

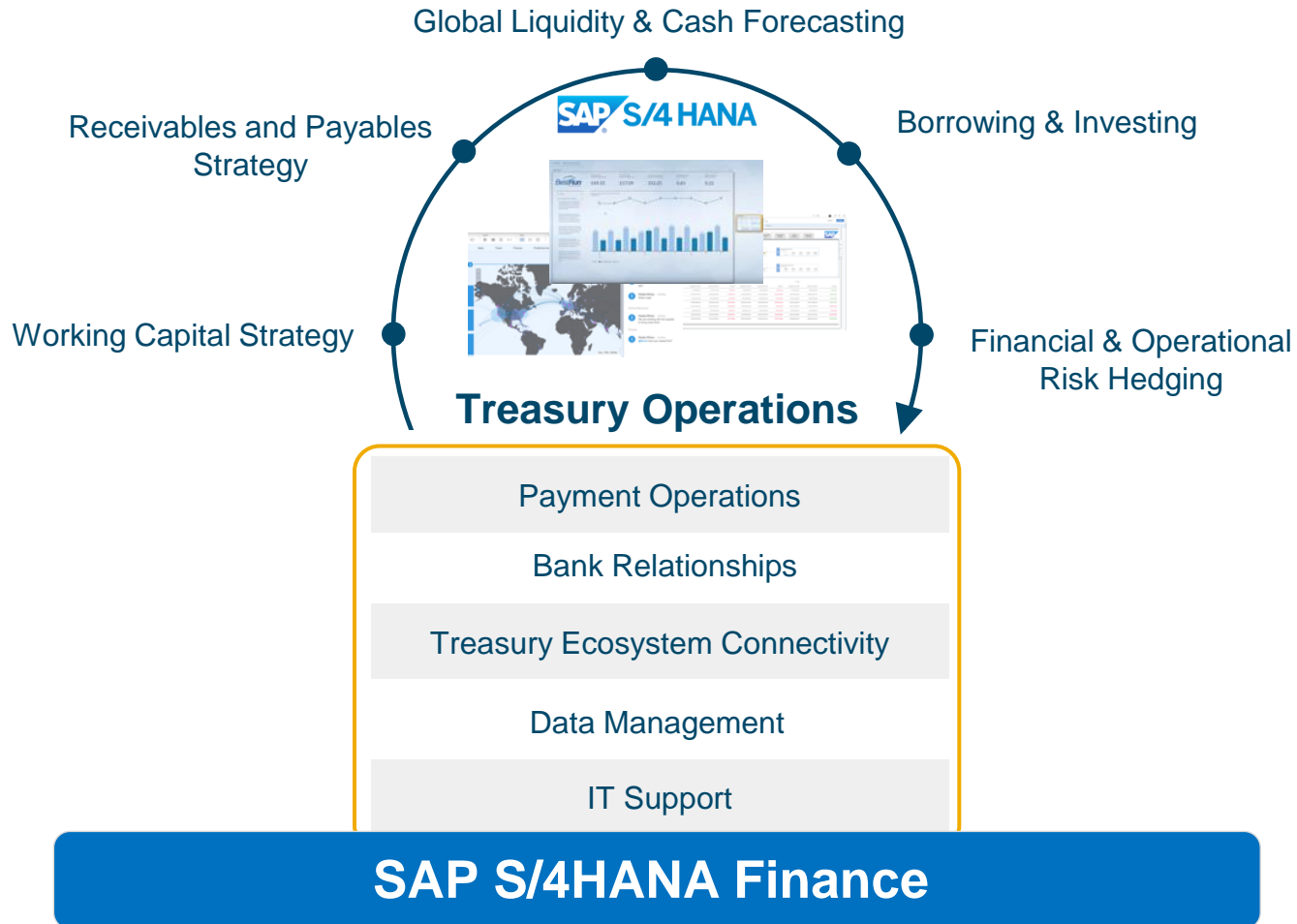
Real-Time banking with
seamless Bank and SWIFT
integration

Automated exposure
determination and Smart
Trading

Analyze and comply
with end-to-end
reporting

From Strategy to Results

An Integrated Treasury & Working Capital Management Platform in the Cloud



Extensive visibility and insights

- On-the-fly analysis using multiple data points
- Management by exception
- Collaboration with stakeholders

Smart processes with automation

- Straight-through processing
- Automated processes
- A foundation for intelligent processes

Business integrity and compliance

- Alerts, monitors and workflow management
- Tight process integration across the enterprise
- Automated controls and monitoring

Cash and Liquidity Management

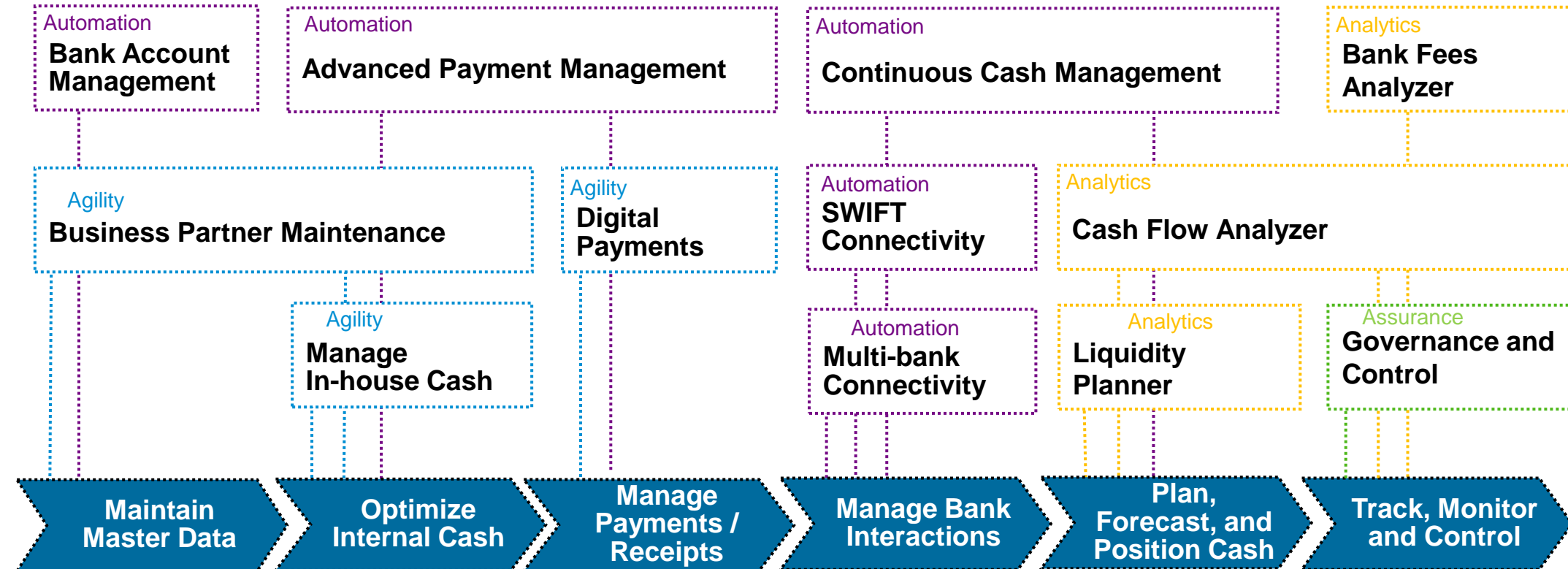
Capability Map on S/4HANA Finance



Automation

Payments and Cash Management on S/4HANA and S/4HANA cloud

Automation and Control of Treasury Operations

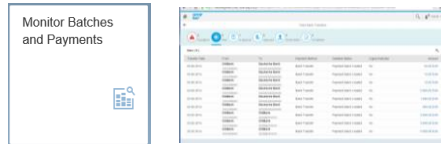


SAP S/4HANA Treasury

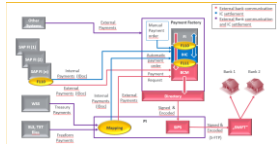
The power of SAP's broad portfolio for the modern Treasurer

Payments & Bank Communication

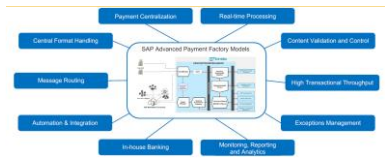
Payment Monitoring and Approvals



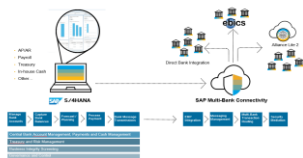
In-House Bank & Payment Factory



Advanced Payment Management



Multi-Bank Connectivity

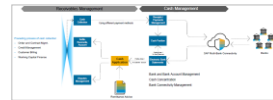


Cash & Liquidity Management

Bank Relationship Management



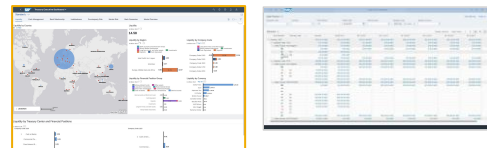
Electronic Bank Statements Cash Application



Cash Position



Cash Flow Forecasting & Liquidity Management



Treasury & Risk Management

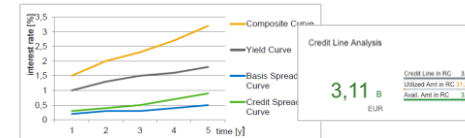
Debt & Investments



Market Data Integration & FX Hedging



Market & Credit Risk

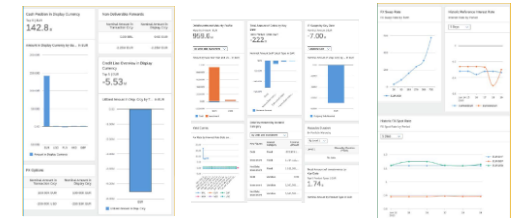


Treasury Accounting

Statutory & Regulatory Reporting

Treasury Analytics and Working Capital Mgmt.

Treasury Analytics



Collections & Dispute Management



Credit Management



Customer Payments

SAP S/4HANA Cash, Payments and Bank Connectivity Solutions

Overview

Effective Bank Relationship Management



Integrated Payments and Bank Connectivity

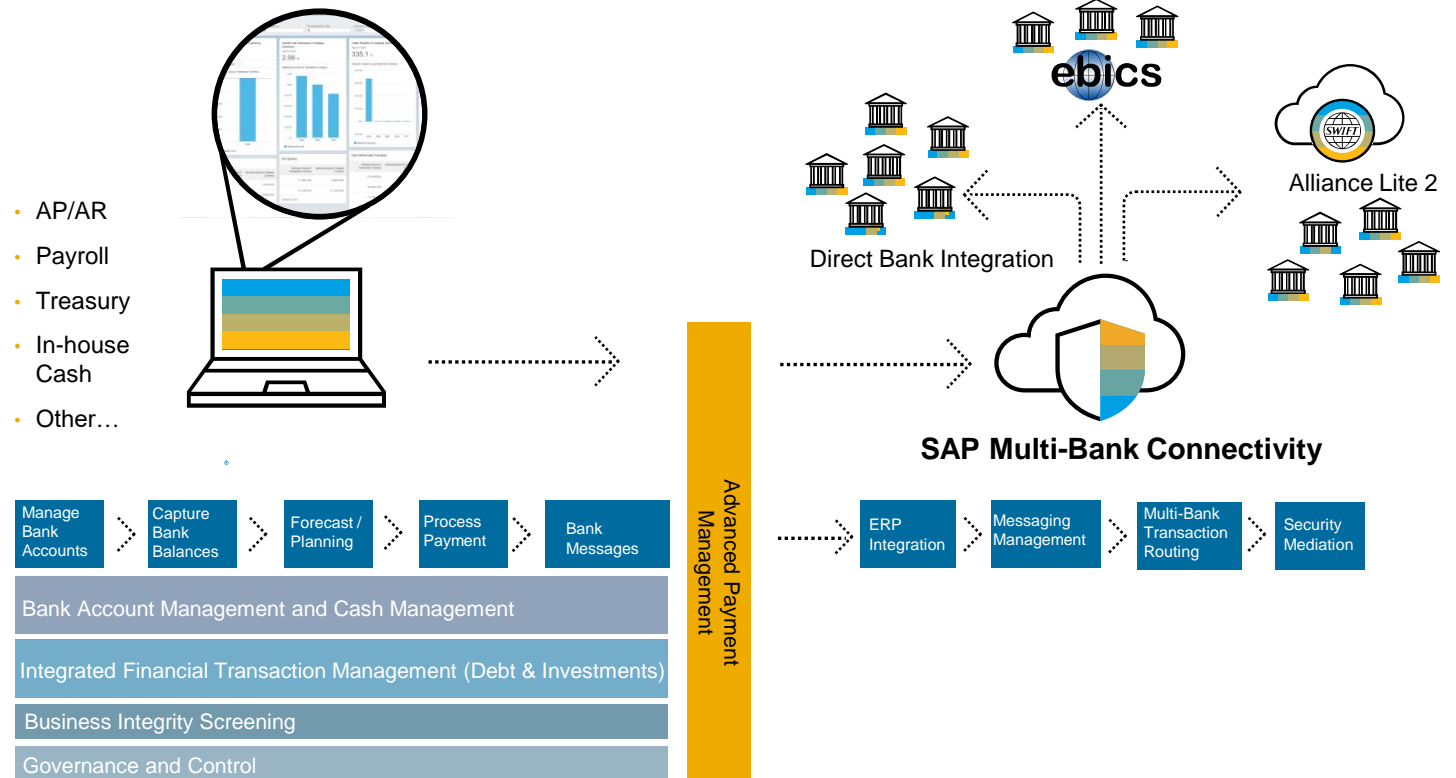


Complete Cash Visibility



Critical Liquidity Decisions

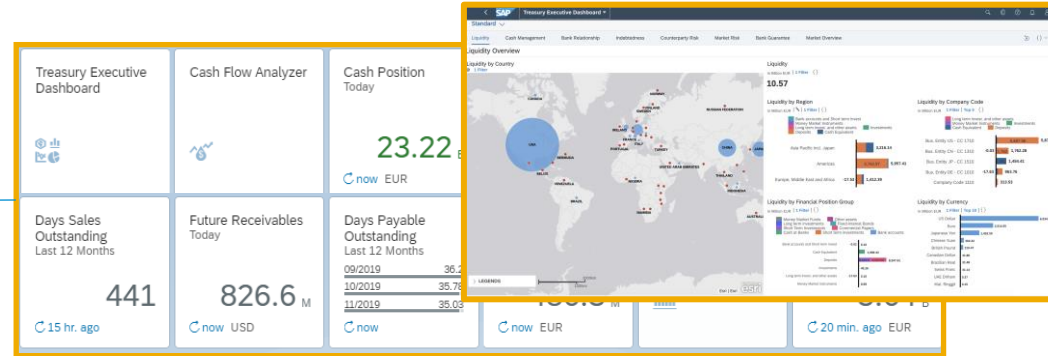
- Review KPIs and execute decisions without switching systems
- Consolidate and view cash flow data from SAP and non-SAP systems on a single Treasury Platform
- Centralize bank account management including overdraft limits, fees and bank risk analysis
- Gain up-to-date financial position through integrated Financial Trade Management applications with standard delivered financial product types
- Run centralized processes for payments and statements
- Improve control and compliance with embedded tools for workflow, monitoring and change tracking



From Daily Cash Operations to Long-term Liquidity Planning

All in One Place

Operational Cash Flow Forecasting & Analysis



- Executive Overview
- Daily Cash Position
- Cash Flow Analyzer
- Treasury Financial Position
- Receivables (DSO)
- Payables (DPO)

Predictive Liquidity Analysis



- Multi-dimensional
- Machine Learning-based Cash Flow Forecasts
- Simulation and Scenario Analysis

Long-term Liquidity Planning

Company Code (1)		Currency (2)		Time (1)		Time (2)	
Company Code 1010		EUR		Oct (2018)		Dec (2018)	
LIQUIDITY PLANNING INPUT		Company Code: Company Code 1010 / Currency: (All)		Calculate Closing			
CURRENCY	COMPANY CODE	LIQUIDITY ITEM	TIME VERSION	Oct (2018)	Oct (2018)	Oct (2018)	Dec (2018)
EUR	1010	Opening		€425,000	€430,124	€421,522	€6,312,238
		Cash received from sales of goods or rendering of services		€76,700	€775,586	€760,074	€76,700
		Refund of tax and fee received		€635	€666	€655	€635
		Other cash received related to operating activities		€9,888	€15,736	€15,421	€9,888
		Cash paid to suppliers for goods and services		€8,365	€6,692	€6,558	€8,365
		Cash paid to employees or on behalf of employees		€1,000	€7,778	€7,622	€1,000
		Tax and fee paid		€3,000	€2,450	€2,352	€3,000
		Other cash paid related to operating activities		€720	€576	€564	€720
		Cash received from disposing fixed assets, intangible assets		€28,503	€102,430	€100,381	€28,503
		Other cash received related to investing activities		€93,270	€74,616	€73,124	€93,270
		Cash paid for buying fixed, intangible assets and others		€11,234	€9,967	€9,907	€11,234
		Other cash paid related to investing activities		€8,884	€7,107	€6,965	€8,884
		Cash received from borrowings		€7,711,245	€7,852,943	€7,499,884	€7,711,245
		Other cash received related to financing activities		—	—	—	—
		Cash paid for debt		—	—	—	—
		Other cash paid related to financing activities		—	—	—	—
		Closing		€6,312,238	€9,085,645	€8,903,930	€18,095,917

- Rolling Liquidity Plan
- Latest reference data for a baseline
- Hierarchy-based aggregation
- Collaboration and tracking

SAP S/4HANA Centralized Payments

Overview

Run Flexible Payments with
Rich Functionality



Execute Integrated
Processes with Automation

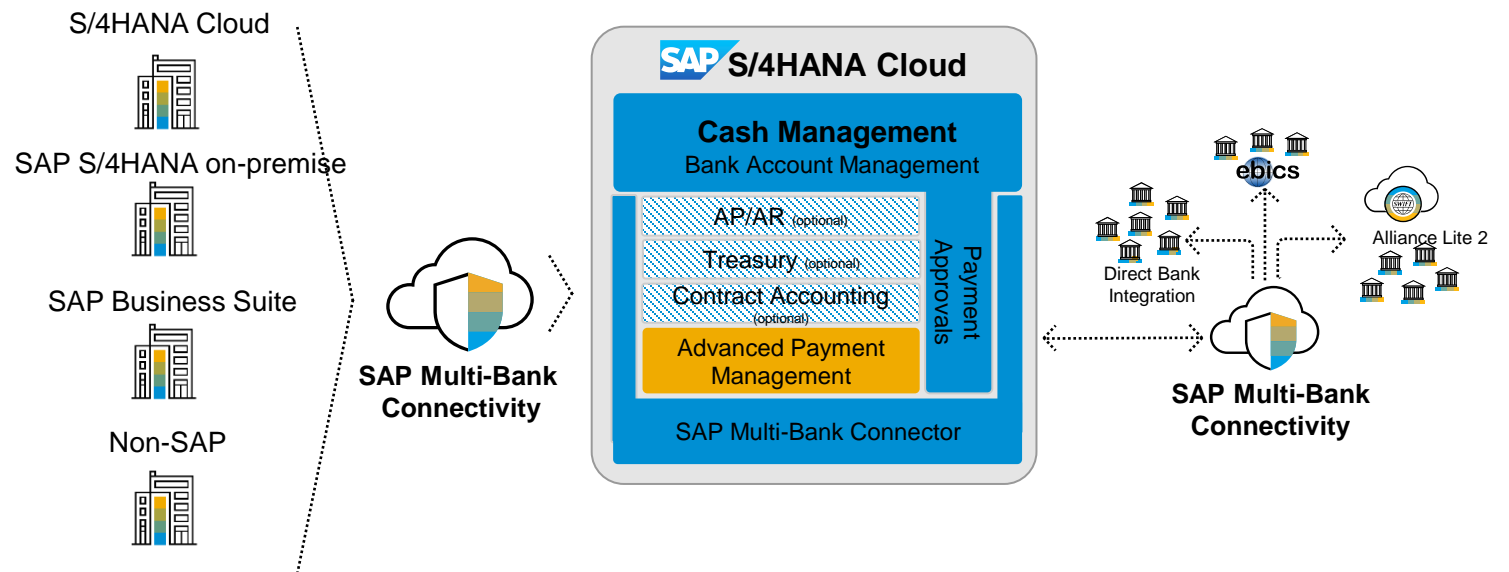


Secured, Transparent and
Controlled Operations



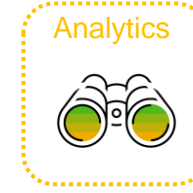
Efficiency with Lower
Operational Risk

- Run **standardized payment processes** for the whole company
- Flexibility** to implement and upgrade payment processes at your own pace
- Mitigate fraud risks** through beneficiary verification against Sanctioned Parties
- Full visibility** of end-to-end payment processes **with built-in exception handling**
- Improve control and compliance** with embedded tools for workflow, monitoring and change tracking
- Handle payments originating from **multiple sources**



Borrowing, Investing and Hedging Risks

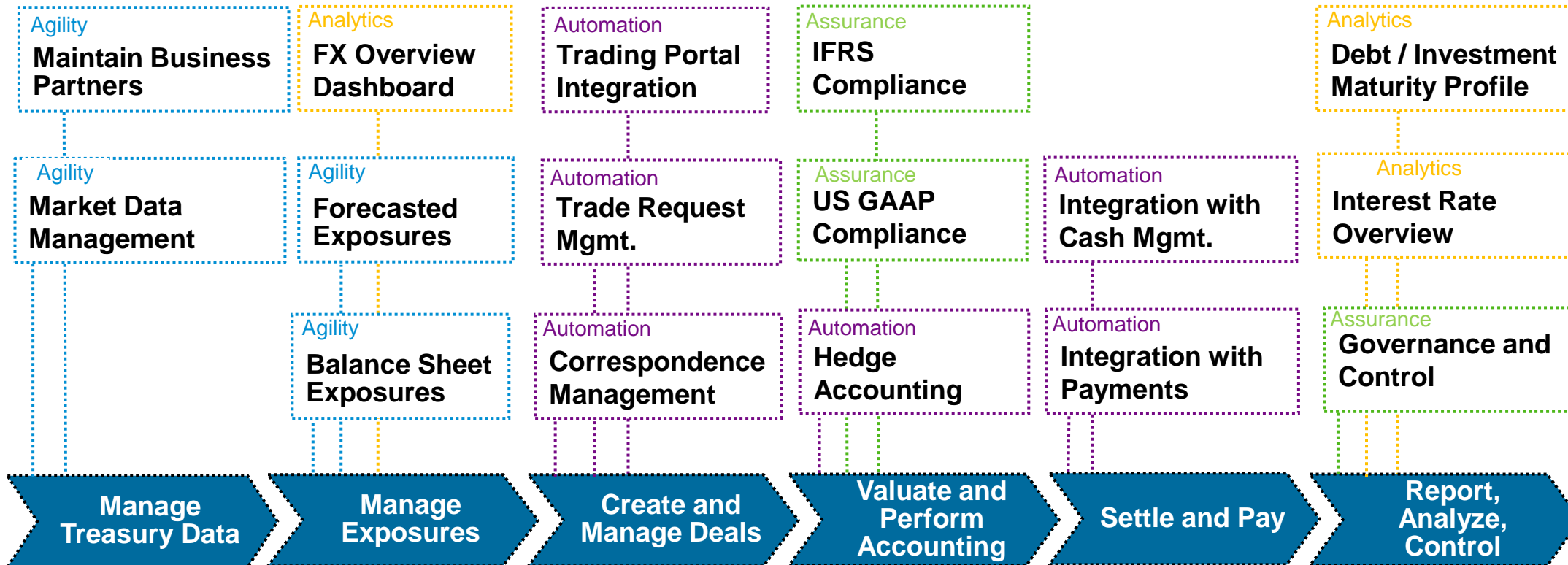
Capability Map on S/4HANA Finance



Automation

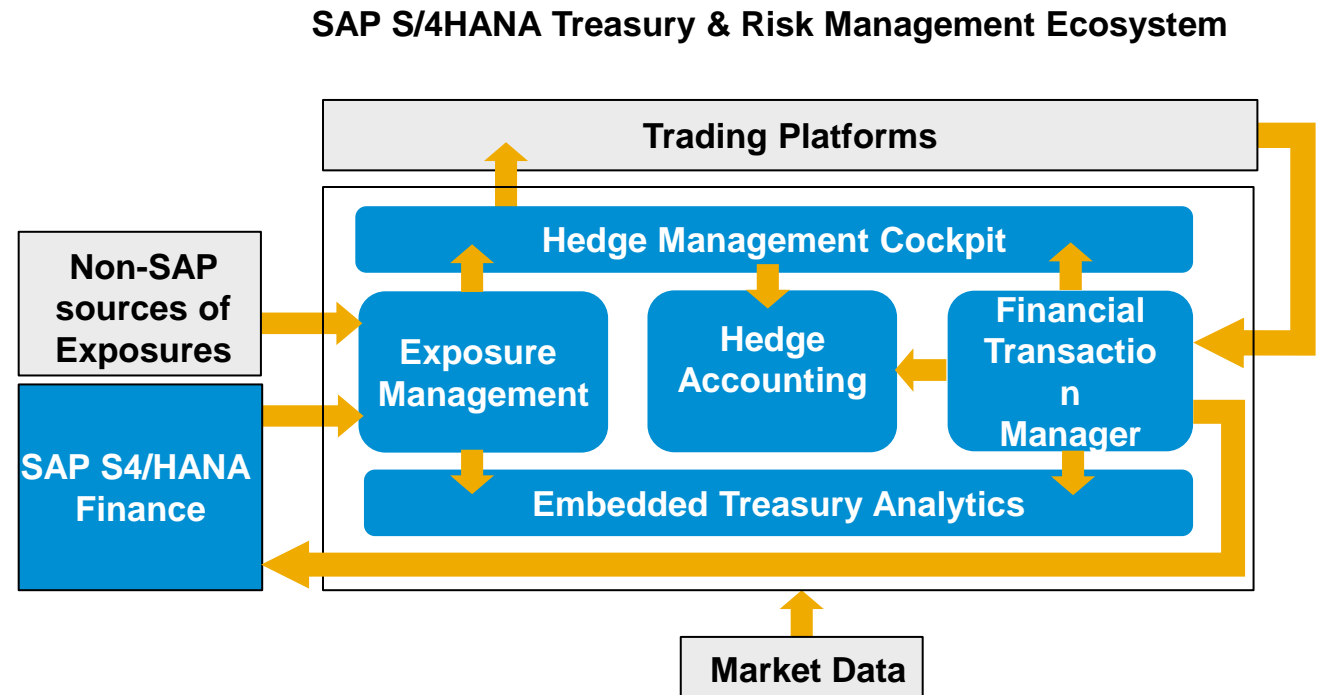
Treasury Risk Management on S/4HANA and S/4HANA cloud

Automation across the entire Financial Transactions and Risk Management Process



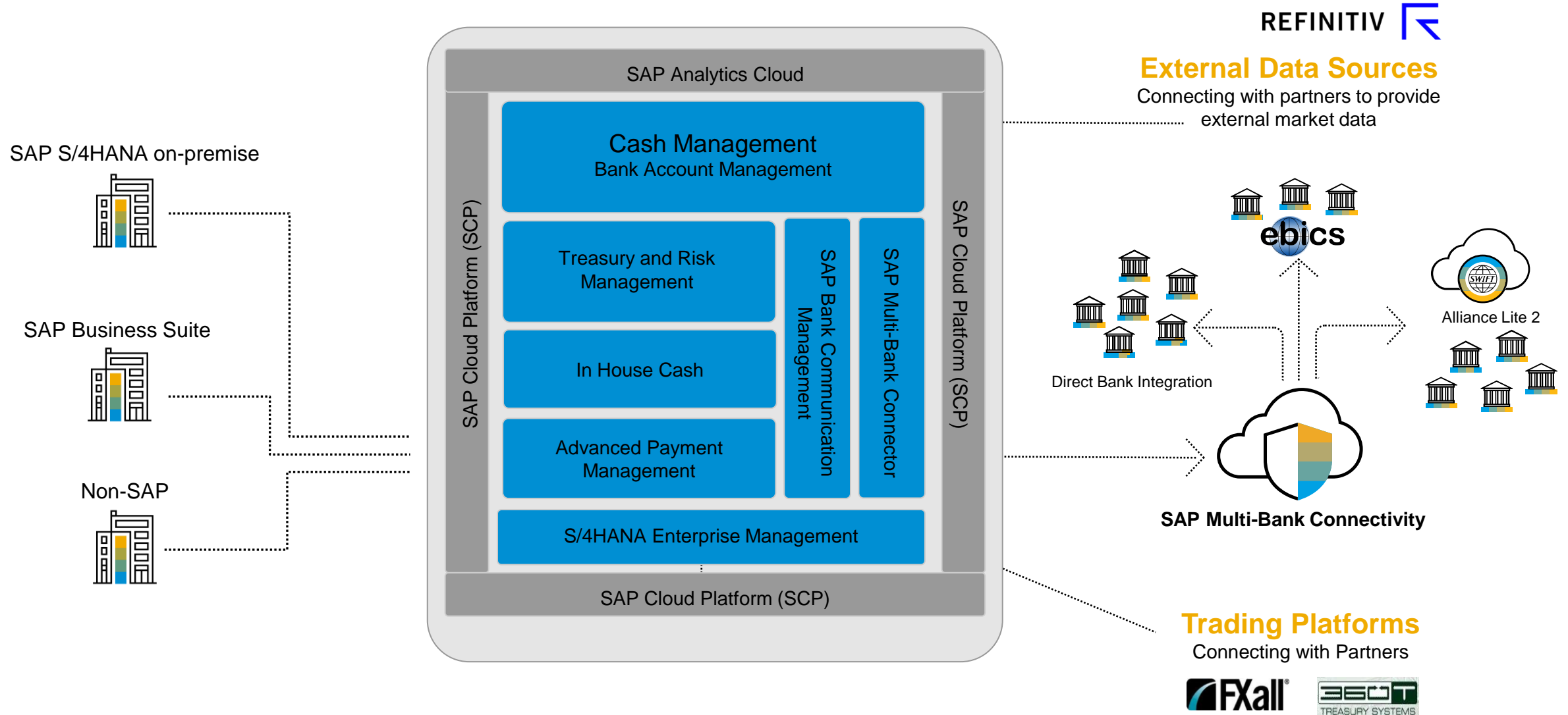
Overview

- On-the-fly analysis with extensive overviews and deep drill-downs
- Realtime views of positions, risks and valuation
- Smart FX trading with standard-delivered automation with trading portals
- Built-in Market Data integration
- End-to-end deal life-cycle management for Debt, investment and risk management transactions
- Large number of preset financial products
- Hedge Accounting for FX Risk with support for IFRS and US GAAP requirements
- Business integrity management through Governance Risk Control (GRC)



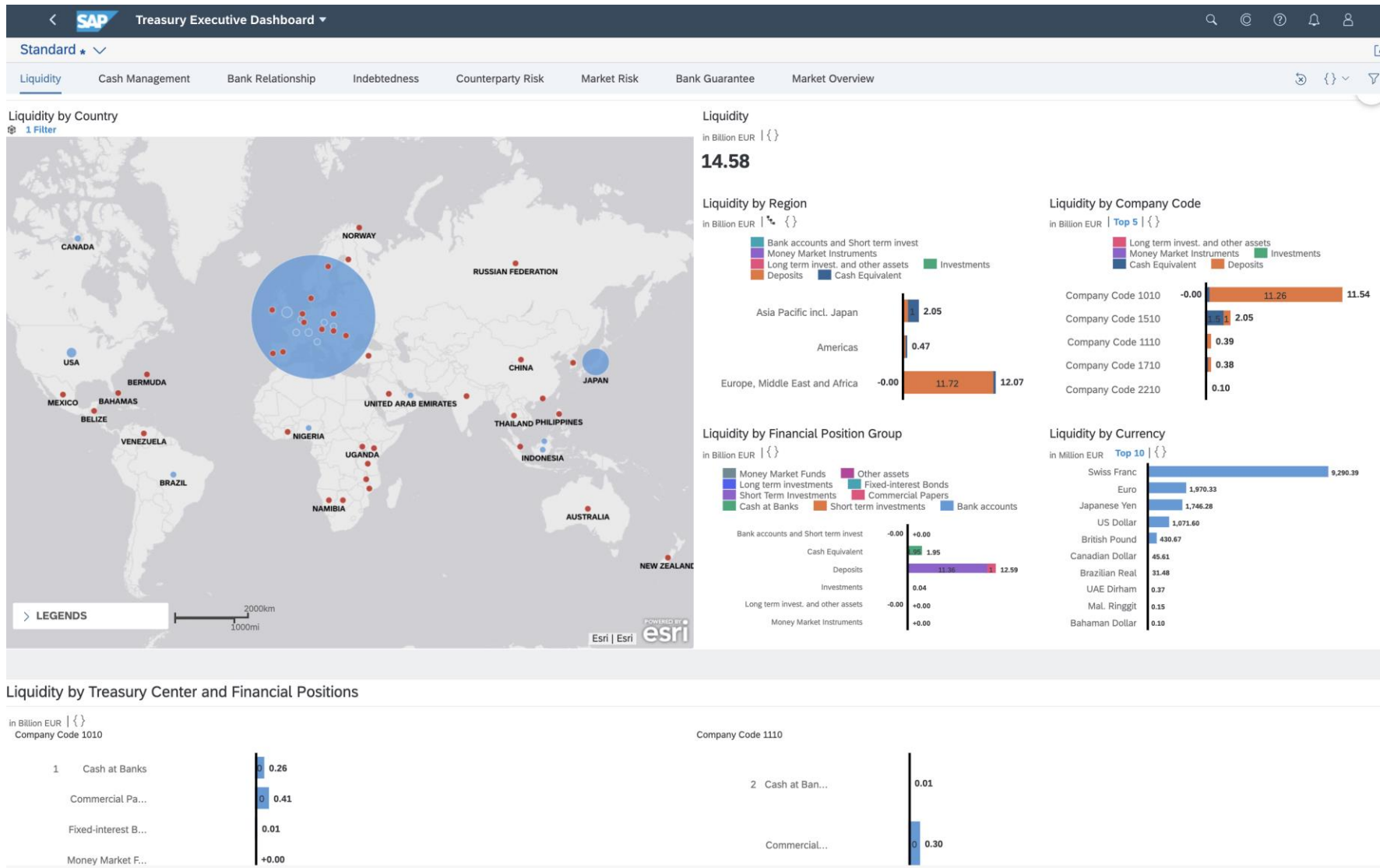
SAP Treasury Workstation

Integration scenarios for SAP S/4HANA



Highlights for SAP S/4HANA for Treasury Management

Executive Analytics Reporting using SAP Analytics Cloud



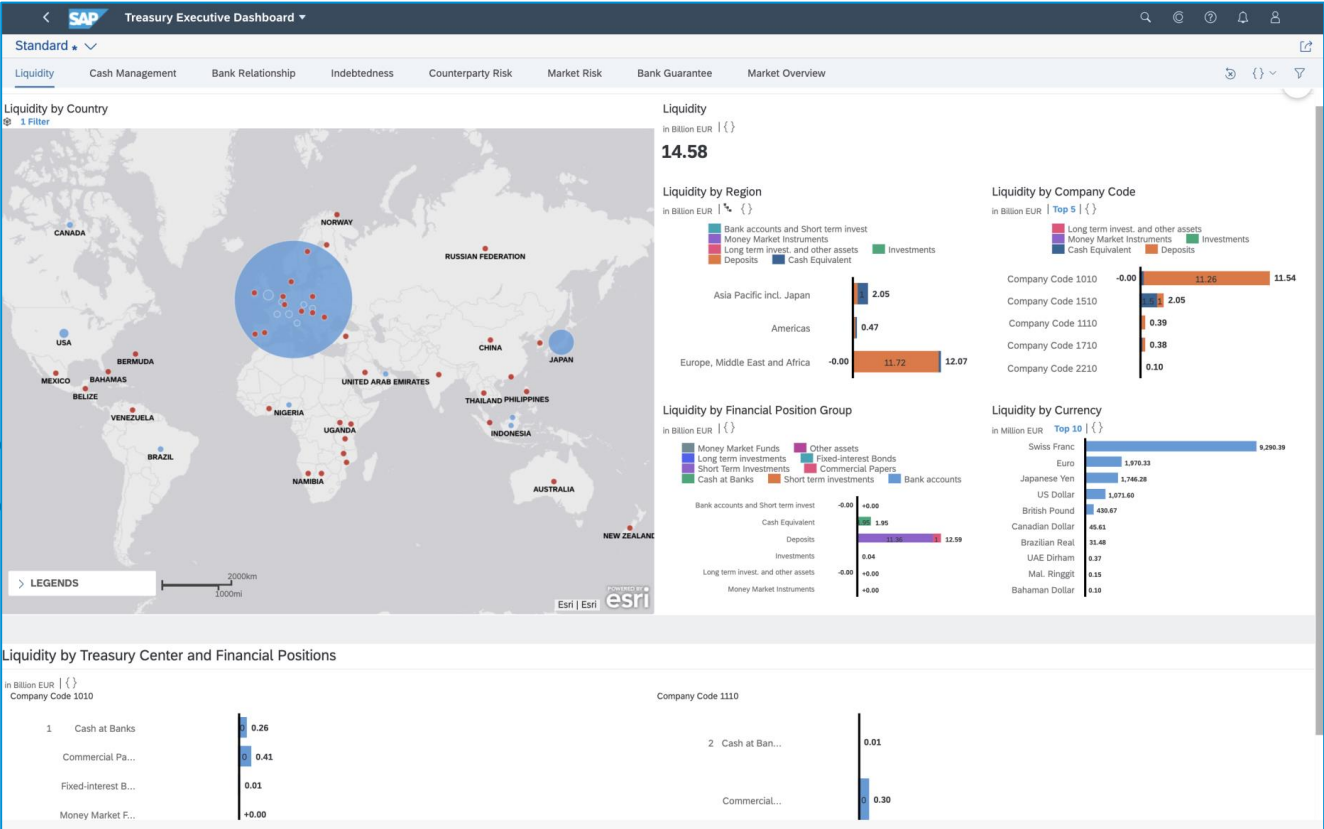
Knowledge at fingertip for stimulus measures to protect businesses

New SAC Executive dash report for Global view of treasury key figures

- Global corporate views for liquidity and Cash management
- Get insight of Bank relationship and the business volume with the different bank groups
- Get insight on Market Data and the market risk
- Ensure sufficient Liquidity by turning Insights into Action
- Drill down from SAC Cockpit to the different Fiori app

Demo

Benefit from
Real-Time Treasury
with
SAP S/4HANA



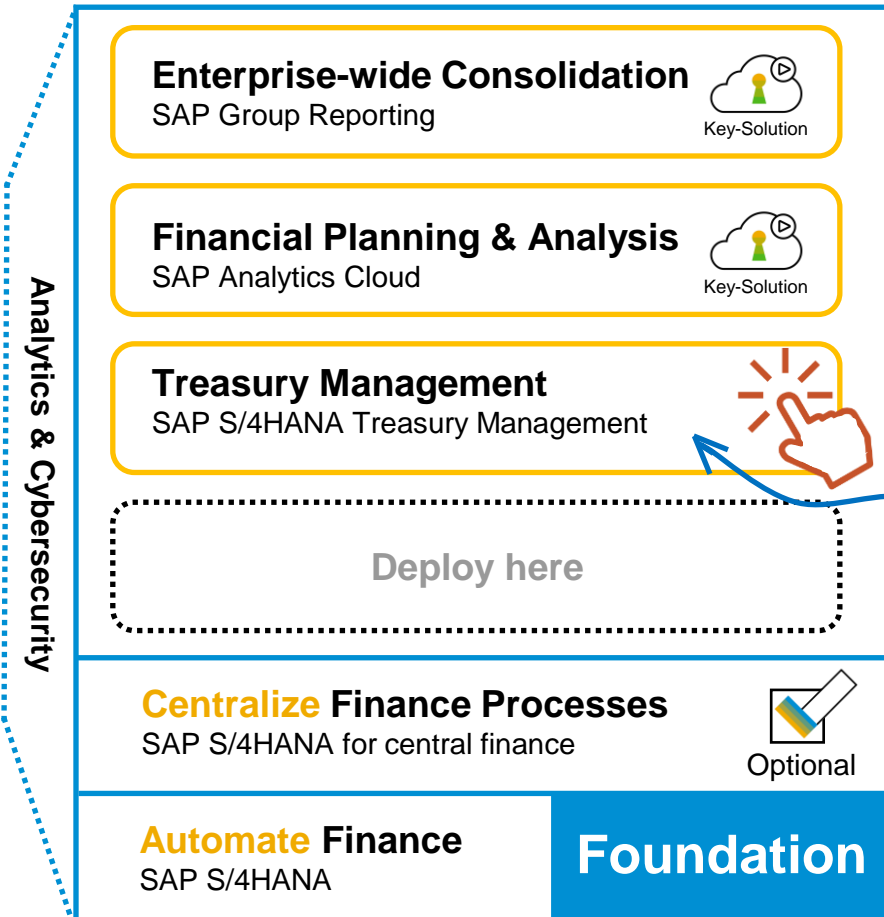
Wrap-Up



Flexibility to choose from a Broad Portfolio to build Your Finance Platform

Single environment for the entire finance transformation deployed at your pace

Design your finance platform:



Choose additional SAP S/4HANA finance capabilities you need:



Move your ERP in the Cloud

SAP S/4HANA Cloud supports multiple scenarios based on customers starting point

Accelerated adoption in the Cloud



RISE with SAP S/4HANA

- Faster access to finance & other innovations
- Seamless onboarding
- Rapid-time-to-value without excessive upfront costs
- Service and Helpdesk included
- Reduced IT footprint
- Flexible landscape allows to change gears as you need
- Only browser required (no local installation)
- Coherent interface across different devices

“We require accelerated time to adoption of new innovations and finance capabilities”

“We plan to move to SAP S/4HANA in the next 12-24 month”

“We started to update our old ECC system to SAP S/4HANA Cloud”

“We moved to SAP S/4HANA Cloud with our first subsidiaries”

“We transformed our non-SAP legacy systems to SAP S/4HANA Cloud”







“I was new to SAP – now we identified how easily we can transform our business”

Building YOUR Intelligent Enterprise

**RISE
WITH
SAP** | Business
Transformation
as a Service

**Comprehensive, intelligent,
customer-specific offering**

Offering components

-  SAP Business Process Intelligence
Discovery Reports
-  Custom Code Analyzer, Readiness
Check, Learning Hub
-  SAP S/4HANA with Deployment Model
of Choice (Public or Private)
-  SAP Business Technology Platform
CPEA Credits
-  SAP Business Network,
Starter Package
-  On Infrastructure Provider of Choice*

Optional components

Additional services by SAP Partners & SAP



Analyze how processes perform, get tailored
recommendations, and benchmark against industry
standards.



Complement, extend and integrate with SAP, partner, or
third-party solutions using the same data model and
business services as SAP applications.



Digitize collaboration with all of your trading partners.



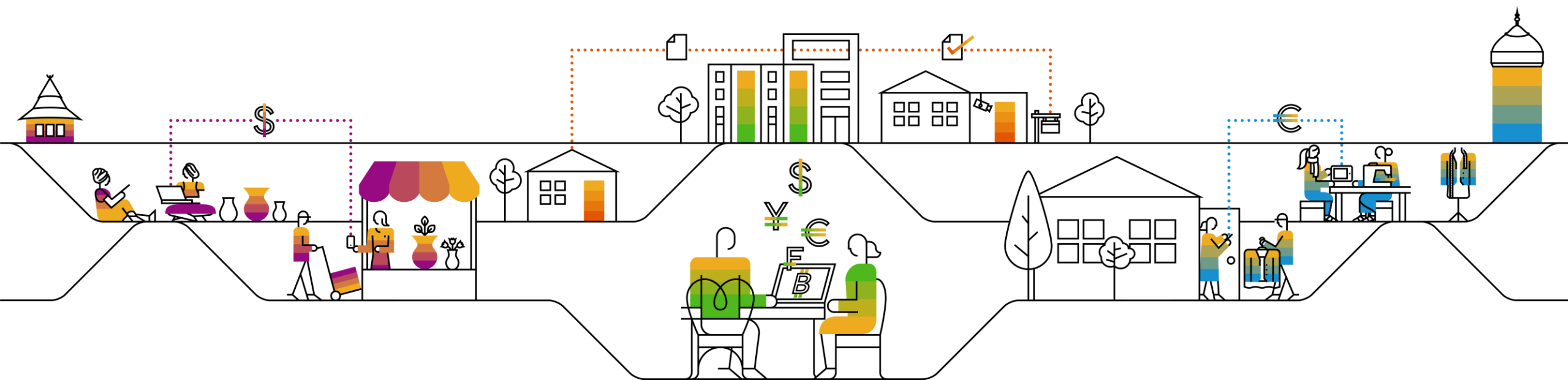
Tools and services from SAP to support your whole journey
that can be augmented by SAP's strong ecosystem

ONE Offer

ONE Contract**

Unmatched TCO

Q & A



Thank you.

Contact information:

Kerim Hadzihamzic

Customer Office
Product Engineering
S/4HANA Finance & Risk

kerim.hadzihamzic@sap.com