

An aerial photograph of a paved road with yellow lane markings, flanked by dense green and yellowing trees. The road runs horizontally across the middle of the frame.

Sustainability Management by SAP

SAP Product Footprint Management

Gunther Rothermel

SVP, Head of SAP S/4HANA Sustainability Management

Nico Wottke

Senior Product Manager, SAP S/4HANA Sustainability Management

30.08.2021

THE BEST RUN



Disclaimer

The information in this presentation is confidential and proprietary to SAP and may not be disclosed without the permission of SAP. Except for your obligation to protect confidential information, this presentation is not subject to your license agreement or any other service or subscription agreement with SAP. SAP has no obligation to pursue any course of business outlined in this presentation or any related document, or to develop or release any functionality mentioned therein.

This presentation, or any related document and SAP's strategy and possible future developments, products and or platforms directions and functionality are all subject to change and may be changed by SAP at any time for any reason without notice. The information in this presentation is not a commitment, promise or legal obligation to deliver any material, code or functionality. This presentation is provided without a warranty of any kind, either express or implied, including but not limited to, the implied warranties of merchantability, fitness for a particular purpose, or non-infringement. This presentation is for informational purposes and may not be incorporated into a contract. SAP assumes no responsibility for errors or omissions in this presentation, except if such damages were caused by SAP's intentional or gross negligence.

All forward-looking statements are subject to various risks and uncertainties that could cause actual results to differ materially from expectations. Readers are cautioned not to place undue reliance on these forward-looking statements, which speak only as of their dates, and they should not be relied upon in making purchasing decisions.

Climate Action

Contribute to a zero carbon economy by reducing your environmental footprint



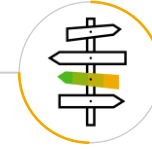
Absolute Facts

- Environmental risks to cause \$120B 'Chain Reaction' for companies by 2026
- Customers want insights on product-level impact. Accountability a must for companies, across all Scope 1,2,3 operations
- Carbon management could deliver \$26T trillion in economic benefits by 2030, generating more than 65 million jobs



We Need to Act Now

- Cross-industry action, enabling business leaders to uncover new business potential, looking beyond the focus of climate pledges
- Empower consumers to make better informed low-carbon decisions
- Unleash the full power of digitalization to improve energy efficiency, enabling the just transition and nature regeneration



What's our Ambition

- Provide corporate and product footprints to reduce carbon emissions across the value chain and exchange data with customers and business partners
- Optimize for CO2: Redesign products, operations and services for sustainability
- Low-carbon governance aligning internal incentives, empowering your organization to take action on zero emissions



Zero Emissions with Climate Action

SAP S/4HANA EHS Environment Management & SAP Product Footprint Management

CORPORATE FOOTPRINT



SAP S/4HANA® EHS: Environment Management *

“Measure, calculate, track and report GHG Emission Inventories to meet corporate reduction goals”

* GHG Inventories is only one use case in SAP S/4HANA EHS



Zero Emissions with
Climate Action

PRODUCT FOOTPRINT



SAP Product Footprint Management

“Calculate product footprints at scale considering the entire product lifecycle for disclosure and internal product optimization”

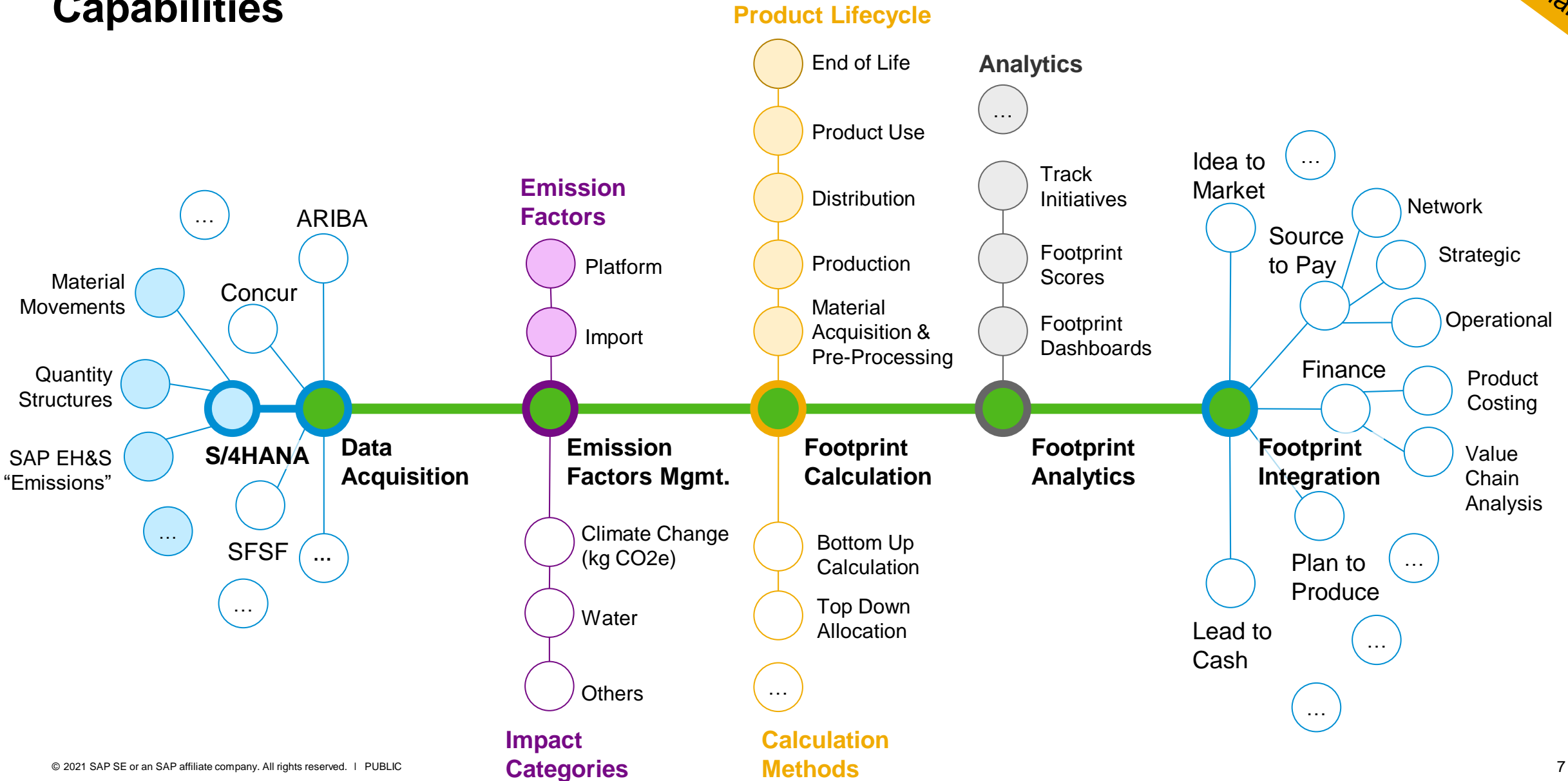
Product Demo



Executing on our Climate Action Strategy



SAP Product Footprint Management Capabilities



SAP Product Footprint Management

Planned Features and Milestones (subject to change)

Published roadmaps in [SAP Road Maps Explorer](#)

GA (2021-Q3)

2021-Q4

2022

Data Acquisition



- Enable integration scenarios for S/4HANA (Material Movements) & Scoping of the extraction of relevant business activity and master data (Plants, Products, Suppliers) [Details [CL](#) | [OP](#)]

- Integration scenarios enhancements for (EHS Emissions, CO cost estimates +)
- API for enhanced master data and business activity replication

- Enhancements for Integration scenarios in S/4HANA – Logistics and Finance (Transport and Delivery)
- Data acquisition from IES Application – Ariba, Concur...
- Integration scenarios enhancements in S/4HANA – Logistics and Finance

Emission Factors Mgmt.



- Import emission factors from lifecycle assessment data [Details]

- Integrate Supplier Emission Factors
- Emission factor lifecycle management

- Enhance emission factor lifecycle management with
- Integration to LCA providers

Footprint Calculation



- Maintain climate change footprint calculation template for purchased products [Details]
- Association of products using emission factors from lifecycle assessment data [Details]
- Enable on demand execution and monitoring of product footprint calculation [Details]
- Check data consistency and quality [Details]

- Calculation for manufactured products, considering scope 3 raw materials
- Top-down allocation for production activities to manufactured products
- Enhanced data quality management
- Improved purchased products calculation (e.g. error handling, bootstrapping)

- Simulation Run / What if scenarios with pre-defined emission factors
- Simulation Run / What if scenarios covering of Downstream Processes (like Use & End of Life Phase (Modelling on PFM or LCA providers))

Footprint Analytics



- Analyze product footprints to gain new insights (API based)
- PFM Content Delivery in Enterprise SAC

- Embedded Analytics for operational footprint management
- Holistic Analytics with SAP Sustainability Control Tower (Enhancements)

Footprint Integration



- S/4HANA: Search and discover footprints (Plant, Material) [Details [CL](#) | [OP](#)]
- S/4HANA: Extend business processes with prod. footprints (Plant, Material) [Details [CL](#) | [OP](#)]

- Footprints (Plant, Material, Supplier)
- First use case in Procurement
- First use case in IBP

- First use case in Finance – Product Costing
- First use case with IES applications (Ariba, Concur...)

Continuous delivery on product innovations

Embedding sustainability into your Supply Chain Planning with SAP Integrated Business Planning

Plant Frankfurt
1010

Production Receipts (1BU): 11.17K
CO2 Total Emission Procurement/Production (kg) : 785.42K

Alerts | Key Figures | Charts

Items (4)

Subscription	Main Key Figure	Main Key Figure Value	Calculation Levels	Refresh Time	Severity	Alert Definition Template
<input type="checkbox"/>	CO2EMISSION TOO HIGH	283,560	Location ID: 1010 Month: 21-Jul	1 second ago	Medium	>
<input type="checkbox"/>	CO2EMISSION TOO HIGH	109,872	Location ID: 1010 Month: 21-Aug	1 second ago	Medium	>
<input type="checkbox"/>	CO2EMISSION TOO HIGH	113,400	Location ID: 1010 Month: 21-Sep	1 second ago	Medium	>
<input type="checkbox"/>	CO2EMISSION TOO HIGH	140,031	Location ID: 1010 Month: 21-Nov	1 second ago	Medium	>

Key Figures

Production Receipts (1BU) & CO2 Total Emission Procurement/Product...

Month	Production Receipts (1BU)	CO2 Total Emission Procurement/Product (kg)
21-Jul	11.17K	283,560
21-Aug	11.17K	109,872
21-Sep	11.17K	113,400
21-Oct	11.17K	71,475
21-Nov	11.17K	140,031
21-Dec	11.17K	67,080

Labs Preview
Subject to Change

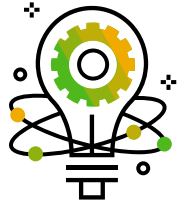
SAP Product Footprint Management enables integration scenarios to collect business activity and master data from SAP business applications such as SAP S/4HANA as primary source for footprint calculation and further integrates the calculated footprints back into the relevant SAP S/4HANA end-to-end processes.

By providing this data-driven approach, SAP is enabling businesses to embed sustainability comprehensively and to gain actionable insights across the entire value chain, supporting the transition to low carbon business processes.

[View Roadmap Explorer](#)

Value Proposition: SAP's 3 Zeros Strategy for Sustainability

A blueprint to integrate sustainability data into business processes across all value chains to drive performance, new products & new markets



Complete the transition to a high-performance Sustainable Intelligent Enterprise by combining operational data mapping with holistic sustainability reporting

Holistic Steering and Reporting



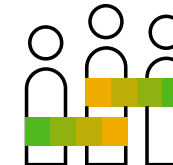
Zero Emissions with **Climate Action**

Generate cost savings by transitioning from "Low to No" carbon across your entire network.



Zero Waste with **Circular Economy**

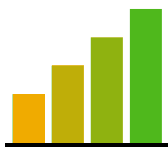
Contribute to a zero-waste world by incorporating resilience and circularity into your supply chains.



Zero Inequality with **Social Responsibility**

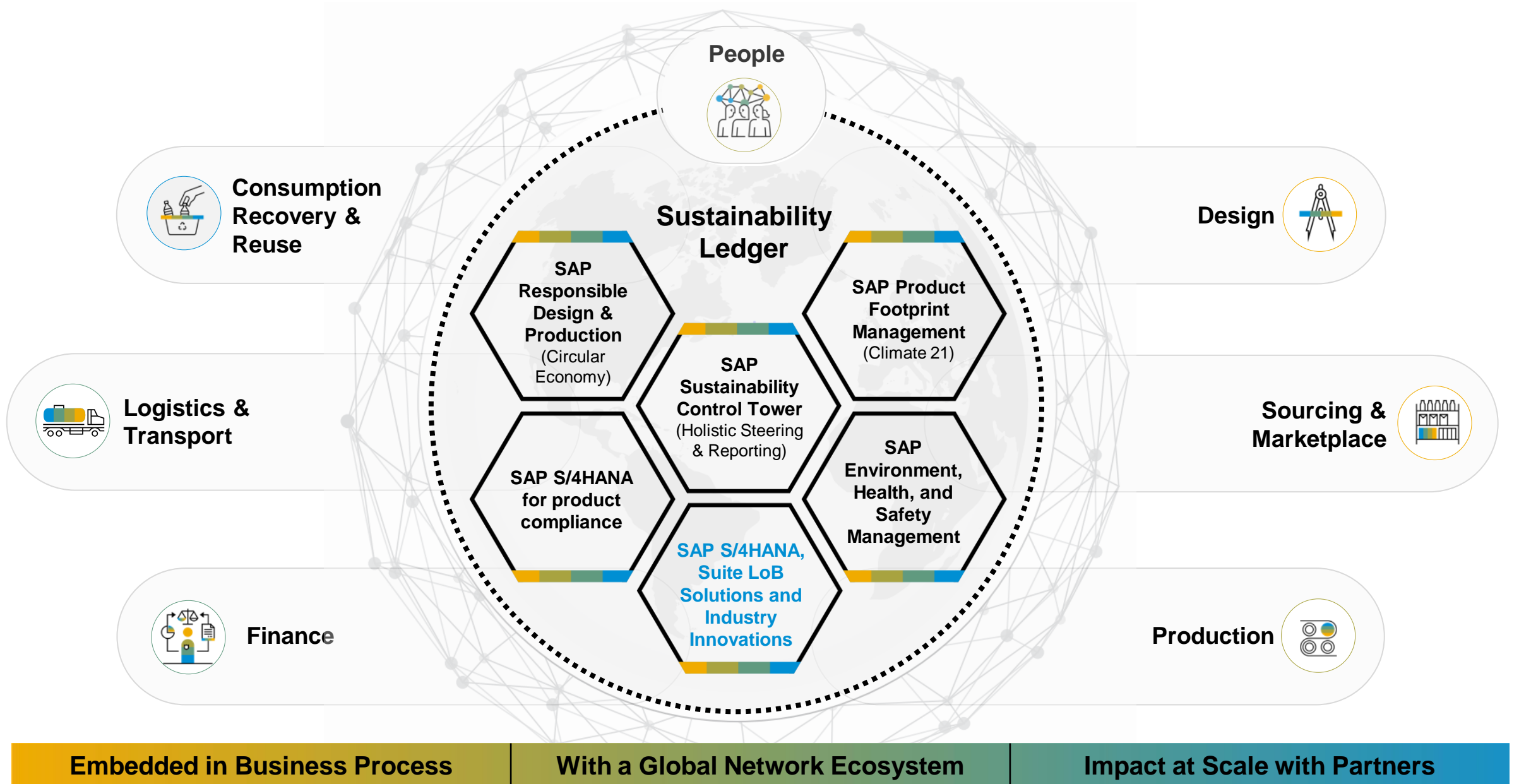
Ensure zero incidents, accidents and harm to communities, people and the environment.

Industry Innovation



Generate additional value by incorporating industry-specific solutions from across our Partner Ecosystem and Industry Cloud

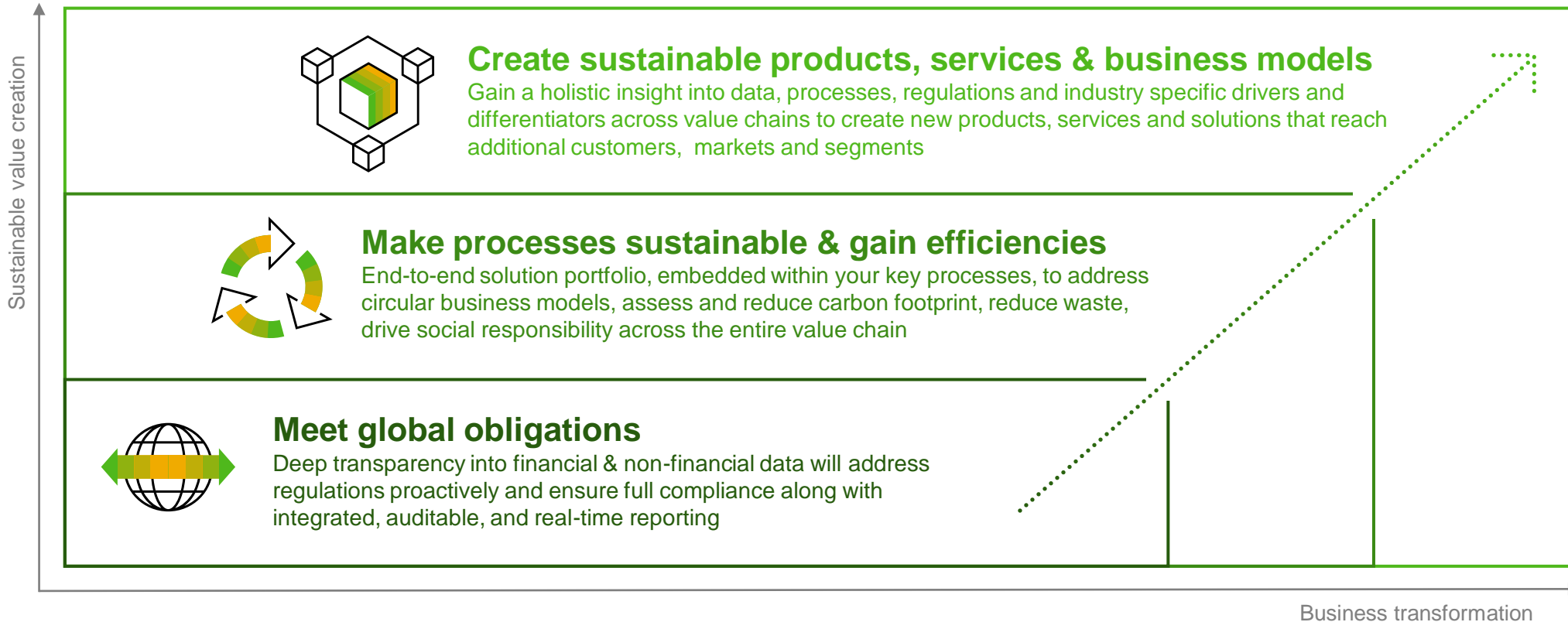
Sustainability Management by SAP: Overview



Our Approach: Embed Sustainability into your Business DNA



Place sustainability front and center. Embed sustainability insights into end-to-end processes extended throughout your business network. This will ensure efficiency gains, social responsibility and compliance, while mitigating risk.



Useful Links



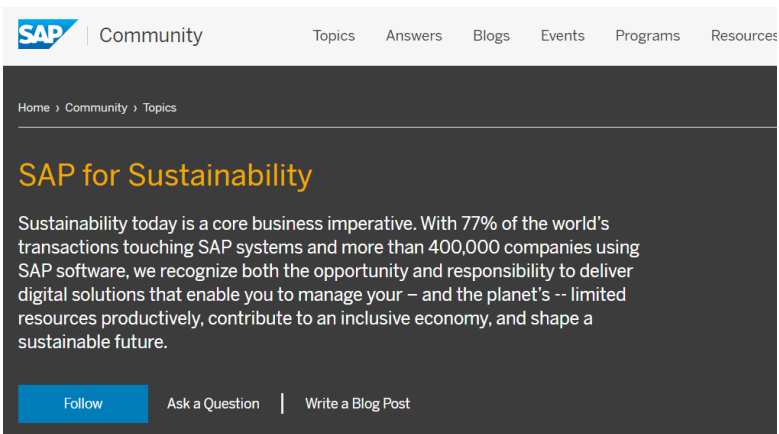
[SAP Purpose and Sustainability](#)
[SAP Solutions for Sustainability](#)



Product Perspective Sessions
[SAP Sustainability Summit | Home](#)



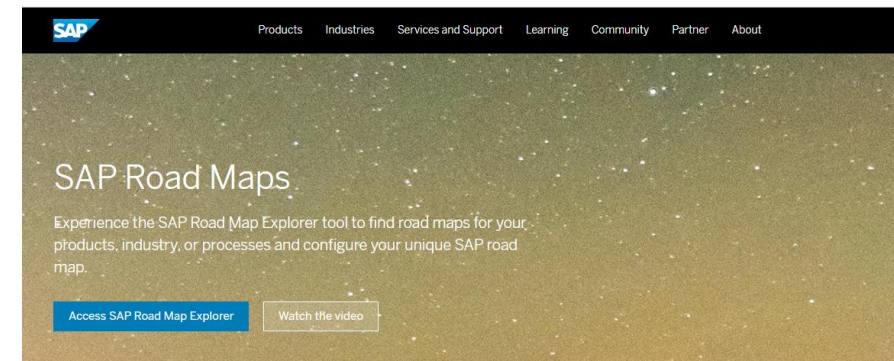
[Business Success with Climate Action](#)
[Helping Business Thrive in a Circular Economy](#)
[SAP Environment, Health, and Safety for Operational Sustainability](#)



[SAP Community | SAP for Sustainability](#)



[SDG Ambition](#)



[SAP Road Map Explorer](#)
[SAP Help Portal](#)

Thank You

