

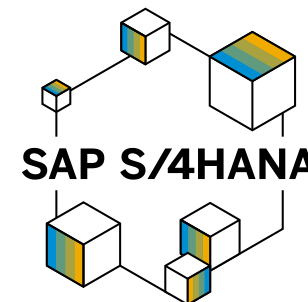


Enterprise Management Layer for SAP S/4HANA

2020 V1.2 (FPS02)

Petra Ohlinger, SAP Product Content Organization
December, 2021

PUBLIC



Disclaimer

The information in this presentation is confidential and proprietary to SAP and may not be disclosed without the permission of SAP. Except for your obligation to protect confidential information, this presentation is not subject to your license agreement or any other service or subscription agreement with SAP. SAP has no obligation to pursue any course of business outlined in this presentation or any related document, or to develop or release any functionality mentioned therein.

This presentation, or any related document and SAP's strategy and possible future developments, products and or platforms directions and functionality are all subject to change and may be changed by SAP at any time for any reason without notice. The information in this presentation is not a commitment, promise or legal obligation to deliver any material, code or functionality. This presentation is provided without a warranty of any kind, either express or implied, including but not limited to, the implied warranties of merchantability, fitness for a particular purpose, or non-infringement. This presentation is for informational purposes and may not be incorporated into a contract. SAP assumes no responsibility for errors or omissions in this presentation, except if such damages were caused by SAP's intentional or gross negligence.

All forward-looking statements are subject to various risks and uncertainties that could cause actual results to differ materially from expectations. Readers are cautioned not to place undue reliance on these forward-looking statements, which speak only as of their dates, and they should not be relied upon in making purchasing decisions.

Agenda

Enterprise Management Layer – Overview

Enterprise Management Layer – Deep Dive

- Standard Scope and Optional Scope
- Enterprise Structure and Corporate Design
- Parallel Accounting
- Documentation

Time to value is key in assuring a successful digital transformation

The Enterprise Management Layer offers a ready-to-run, pre-configured, localized core template based on pre-activated SAP Best Practices for Rise with SAP S/4HANA Cloud, private edition accelerating greenfield implementations

The Challenge

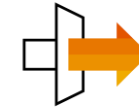
- How to start a transformation journey?
- Missing end-to-end view
- Scattered landscapes
- Managing application lifecycle and functional adoption
- Non-standardized and highly modified processes limit the ability to leverage new innovation
- International footprint and localization challenges
- Missing project documentation for change projects

The Solution

Enterprise Management Layer for SAP S/4HANA

- Pre-defined and pre-configured end-to-end business processes based on SAP Best Practices
- Localization for up to 43 country versions fully harmonized within a corporate setup
- Appliance concept allows for immediate consumption and implementation jump-start – pre-deployed, pre-tested and fully documented
- Cloud-ready deployment methodologies
- Supporting SAP Activate as the default implementation methodology
- Jump-start your “Fit-to-Standard” activities

The Value



End-to-end transformation accelerator for your project



Positive impact on Total Cost of Implementation (TCI) and Total Cost of Ownership (TCO)



Ready to scale through Partner Engagement



Accelerated Time to Innovation

Ready to run for **RISE WITH SAP** | Business Transformation as a Service

Customer Survey by Forrester Research, Inc.

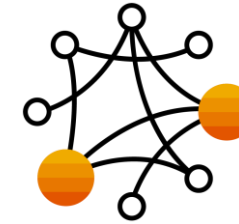
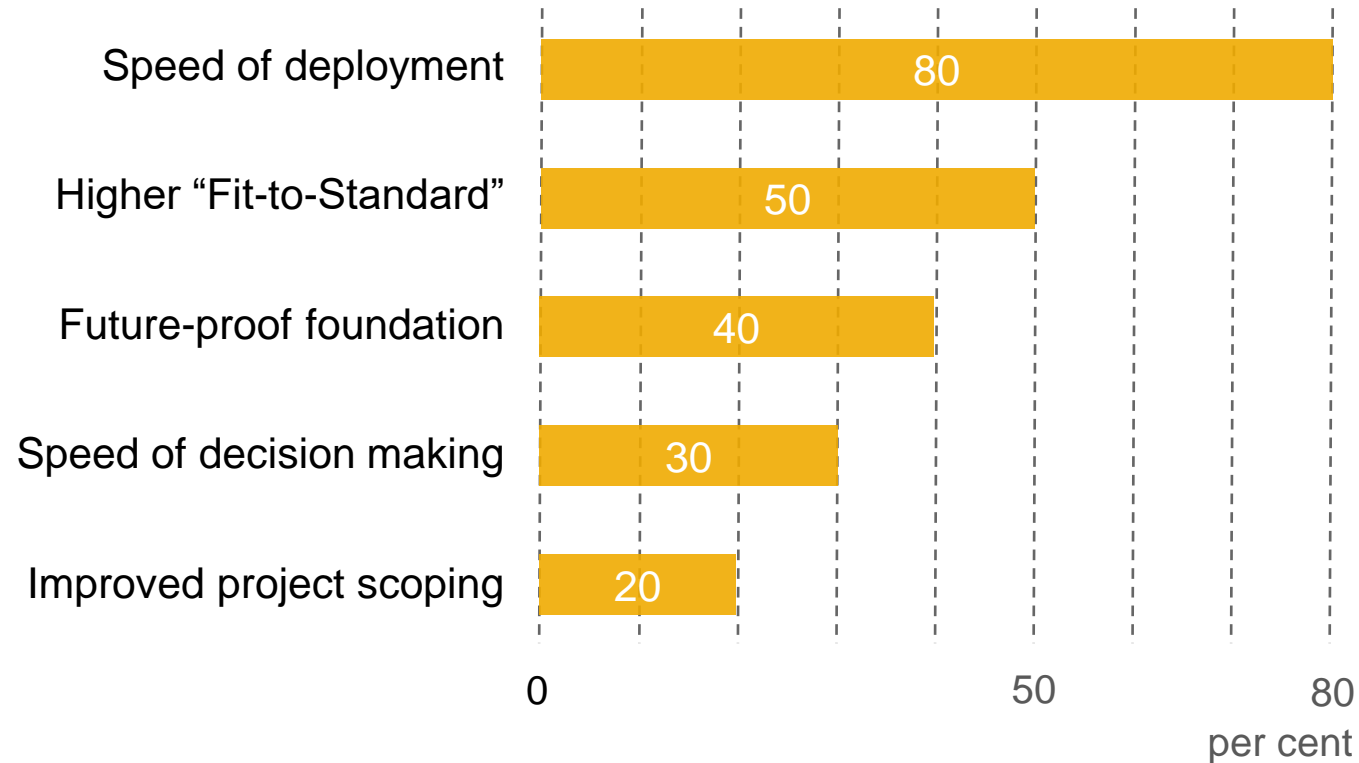
The **enterprise management layer** replaces the **SAP Model Company for Multinational Corporations**

“Which benefits did you observe, using SAP® Model Company?”

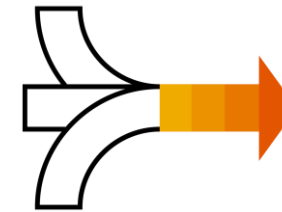


Read the report

Main benefits observed by Early Adopters



Reduced complexity



Business agility



Fast projects



Find out how other customers used the predecessor of **enterprise management layer for SAP S/4HANA**

as their global template to successfully implement SAP S/4HANA.

[Osram](#)

[Continental](#)

[Hewlett Packard Enterprise](#)

[Kellogg's](#)

[Deutz](#)

*Feedback, our customers shared with a leading Research and Advisory Company



Choose Along Use Case and Preferences

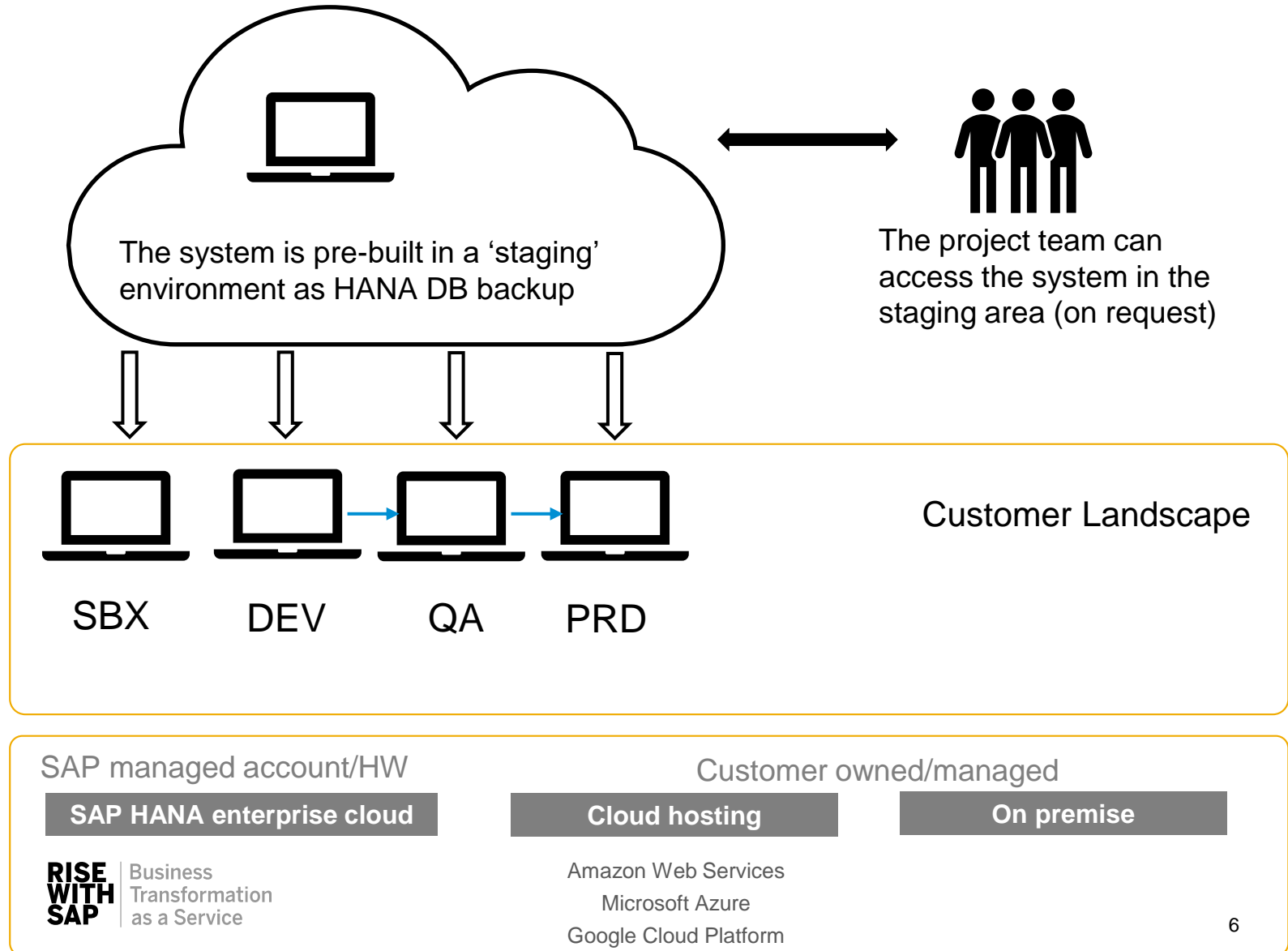
Each system is built per customer requirements (based on questionnaire):

- ✓ Country scope
- ✓ Group currency
- ✓ Fiscal year variant
- ✓ Optional Scope Items

Several clients* are available to jumpstart the project:

Client*	Purpose
010	BI Technical Settings
050	Backup
100	Test / Validation with Fiori Interface
400	Development (no master data)

* Client setup is based on SAP Best Practices “whitelist” approach following the SAP golden rules for cloud



Decreasing Time to Value



up to **90%** savings
with an industry-specific reference
architecture to start from practice
processes modeled



up to **50%** savings
with best-practices processes
configured and documented



up to **30%** savings
with test case template and
operations support templates

Traditional Approach

Prepare

Business
Blueprint

Build & Test

Testing &
Go-live

Template based Approach

Prepare

Explore

Realization

Deploy

up to 30% decrease



More: [SAP Activate](#)

1. Determine which scope items are **relevant** for your project.
2. Test and **evaluate the standard business processes** as described in the test script of each scope item. Make sure to enter the exact data as described in the script.

3. Run **Fit to Standard Workshops**: decide if the standard process can be used.
4. Analyze what needs to be changed

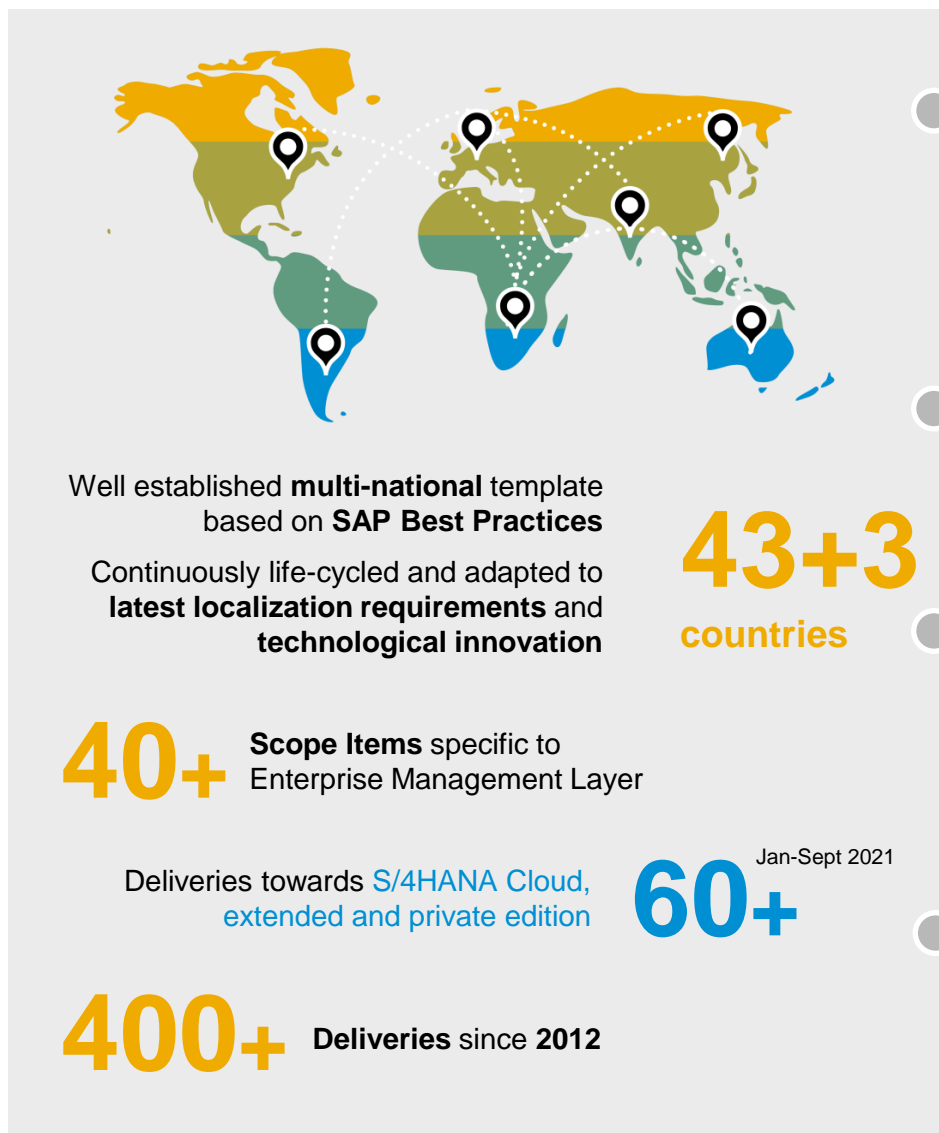
5. Configure the **delta** in the DEV system, on top of the EML configuration (client 400).
6. **Transport** the changes to Quality and Production systems

Please note:

The EML provides all configuration relevant for the preconfigured processes, but not all standard settings from client 000 ('**whitelist**'). They can be copied from client 000 if required.



Enterprise Management Layer in a Nutshell



Business Content

- **43** countries
- Business content based on latest **SAP Best Practices 2020**
- **Standard scope** (not requiring additional licenses nor interfaces)
- Content enhanced for **global operations** and for local requirements
- **25** system languages



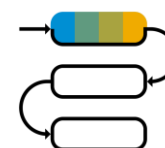
User Interface

Embedded Fiori Applications activated and consumable



Documentation

- **Standard documentation** by SAP Best Practices available as well through Solution Manager
- Additional, enhanced **enterprise management layer specific documentation**



Optional Scope Enhancements

- Activation of **additional standard** SAP Best Practices scope items
- Activation of additional business processes on top of SAP Best Practices

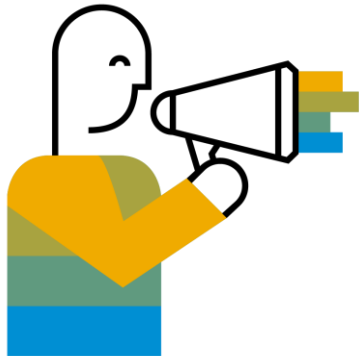


Country and Language Overview



Country Coverage [43]

Australia (AU), Austria (AT), Belgium (BE), Brazil (BR), Canada (CA), China (CN), Czechia (CZ), Denmark (DK), Finland (FI), France (FR), Hong Kong (HK), Germany (DE), Great Britain (GB), Hungary (HU), India (IN), Indonesia (ID), Ireland (IE), Italy (IT), Japan (JP), Korea South (KR), Luxembourg (LU), Malaysia (MY), Mexico (MX), New Zealand (NZ), Netherlands (NL), Norway (NO), Philippines (PH), Poland (PL), Portugal (PT), Romania (RO), Russia (RU), Saudi Arabia (SA), Singapore (SG), Slovakia (SK), Spain (ES), South Africa (ZA), Sweden (SE), Switzerland (CH), Taiwan (TW), Thailand (TH), Turkey (TR), United Arab Emirates (AE), USA (US)



System Languages [25]

Arabic, Czech, Chinese (simplified), Chinese (traditional), Danish, Dutch, English, Finnish, French, German, Hungarian, Italian, Japanese, Korean, Malay, Polish, Portuguese, Romanian, Norwegian, Russian, Slovak, Spanish, Swedish, Thai, Turkish

** Localization reflects standard SAP content based on SAP Best Practices used as the foundation for the enterprise management layer for SAP S/4HANA to accelerate implementations.*

SAP S/4HANA, extended edition is available in 64 Country/Region versions in 39 languages.



Functional Scope

The **enterprise management layer** is based on **SAP Best Practices** (on premise) for SAP S/4HANA 2020.

The **standard scope** includes 160 scope items.

Scope options are available for

- scope items based on SAP Best Practices with additional license requirements
- scope items that are specific to enterprise management layer


Find out more:

[SAP Best Practices](#)

[Enterprise Management Layer](#)

Browse Packages / SAP S/4HANA / On-Premise /

SAP SAP Best Practices for SAP S/4HANA (on premise) USA, SAP S/4HANA 2020



Description:
Accelerate and simplify the path to SAP S/4HANA (on premise) for faster time to value with SAP Best Practices that are tailored specifically to simplify the adoption of SAP S/4HANA.

Version:
USA, SAP S/4HANA 2020

Language:
English

Overview Solution Scope Accelerators Find Out More

Standard Scope

Accounting & Financial Close	Sourcing & Contract Management
Cost Mgt & Profitability Analysis	Supplier Management
Financial Operations	Operational Procurement
Cash Management (Basic)	Inventory
Enterprise Risk & Compliance	Order & Contract Management
Production Operations	Service Operations & Processes
Production Planning	
Maintenance Management	
Quality Management	
Product Engineering	

Scope Options

Advanced Compliance Reporting
Adv. Receivables Management
Adv. Cash Management
Lease Accounting
Group Reporting
Ext. Warehouse Management
Advanced ATP
Ext. Prod. Planning & Scheduling
Advanced Variant Configuration
Enterprise Contract Management



Business Process Scope – Scope Enhancements *[not available in SAP Best Practices]*

Standard Scope: Finance & Localization (always included)

AC01	Parallel Accounting	(Replaces 1GA, 1GB, 1GF)
IC40	Intercompany Reconciliation	(Replaces 40Y)
LOC01	Country-specific functionality (Overview)	<i>Update: Sept 2021</i>
LOC02_DE	Localization Germany: E-Bilanz	
LOC03_EU	VAT Information Exchange System - VIES (European Union)	<i>New: May 2021</i>
LOC04_ES	Bills of Exchange (Spain)	<i>New: May 2021</i>
LOC04_FR	Bills of Exchange (France)	<i>New: May 2021</i>
LOC04_IT	Bills of Exchange (Italy)	<i>New: May 2021</i>
LOC04_AE	Post Dated Cheques (United Arab Emirates)	<i>New: June 2021</i>
LOC04_TR	Post Dated Cheques - Bills of Exchange (Turkey)	<i>New: June 2021</i>
LOC04_JP	Bills of Exchange Receivable (Japan)	<i>New: Sept 2021</i>
LOC05_PT	Mapas Fiscais (Portugal)	<i>New: Sept 2021</i>
LOC06_NL	Chain Liability (Netherlands)	<i>New: June 2021</i>
LOC07_LU	SAF-T (Luxembourg)	<i>New: June 2021</i>
LOC07_NO	SAF-T (Norway)	<i>New: June 2021</i>
LOC08_ES/FR/IT	Pro-rata VAT (Spain, France, Italy)	<i>New: Sept 2021</i>

Standard Scope: Other (always included)

SRV01_DE/US	<i>New: June 2021</i>	Recurring Service
SRV02_DE/US	<i>New: June 2021</i>	Inhouse Repair
E2E01_DE/US	<i>New: Sept 2021</i>	Produce and Sell Standard Products - Inventory Management

Scope Option 04: Advanced Cash Management includes:

CLM01	Advanced Cash Management Test Cycle
CLM02	Cash Concentration

Scope Option 05: Real Estate Management includes:

LA01	Lease-In Accounting
LA02	Lease-Out for Sublease Accounting
LA03	Manage Invoice for Rent

Scope Option 06: Group Reporting includes:

GR01	<i>New: May 2021</i>	Group Reporting – Financial Consolidation integrated with SAP S/4HANA Finance
GR02	<i>New: Sept 2021</i>	Group Reporting - Consolidation of Investments - Actuals Activity-Based

Scope Option 11: Extended Warehouse Management includes:

WM01	<i>New: June 2021</i>	Synchronous Goods Receipts in EWM For External Procurement
WM02	<i>New: Sept 2021</i>	Synchronous Goods Receipts in EWM in Kanban



Business Process Scope – Scope Enhancements *[not available in SAP Best Practices]*

Available as Additional Services:

[VP01] Intercompany Processes (for 2 countries) (on request)

IC21 Sale from Central Stock
 IC22 Sale from Local Stock
 IC23 Intercompany Debit and Credit Memos
 IC31L Lean Returns to Central Stock *(new: June 2021)*
 IC31A Advanced Returns to Central Stock *(new: June 2021)*
 IC32L Lean Returns From Local Stock *(new: June 2021)*
 IC32A Advanced Returns From Local Stock *(new: June 2021)*
 IC40 Intercompany Reconciliation

[VP04] Cross-Plant Stock Transfer *(new: June 2021)* (on request)

SC10 Cross-Plant Stock Transfer with Direct Posting
 SC11 Cross-Plant Stock Transfer with Stock Transport Order

[VP02A] Project System for Accounting (on request)

PS10 Overhead Projects
 (including Statistical Projects and Projects with Revenue)
 PS11 Investment Projects
 PS20 Projects with Fixed Price Billing *(new: Sept 2021)*

[VP02B] Project System: Engineering Project (on request)

PS30 Engineering Project *(new: Sept 2021)*

[VP05] Letter of Credit Management (on request)

TRM10 Letter of Credit Management –
 Integration with Sales Order Management *(new: Sept 2021)*

[VP03] Additional Countries with limited Finance Scope ONLY (on request)

Estonia (EE)
 Latvia (LV)
 Lithuania (LT)

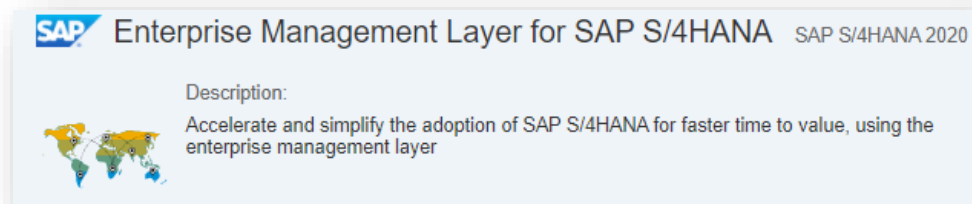
Further Reading



Enterprise Management Layer on [SAP Best Practices Explorer](#)

Overview information and detailed documentation for both flavors:

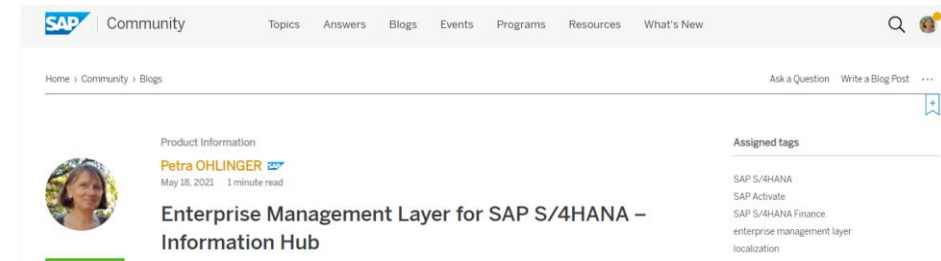
Cloud, extended edition and private cloud edition / on premise deployment



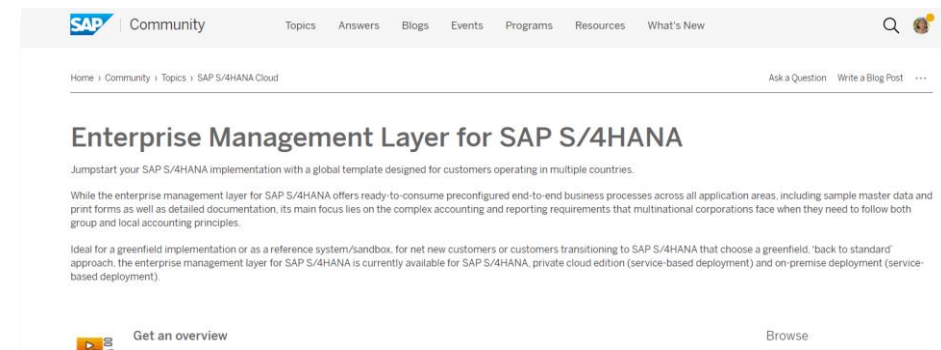
SAP Notes:

- ❑ [3024039 - Enterprise Management Layer for SAP S/4HANA - 2020OP](#)
Additional information and updates
- ❑ [3035880 - Recommendations for greenfield implementations of RISE with SAP S/4HANA Cloud, private edition following a cloud mindset](#)
- ❑ [2921887 - Enterprise management layer for SAP S/4HANA Cloud, extended edition](#)

- ❑ [Blog Series](#): SAP Best Practice Enterprise Management Layer for SAP S/4HANA – Information Hub



- ❑ [Blog](#): Enterprise Management Layer for SAP S/4HANA – the Golden Standard for Best Practices – What's new?
- ❑ Enterprise Management Layer in [SAP Community](#)



- ❑ [SAP Activate Methodology](#) for RISE with SAP S/4HANA Cloud, private edition
- ❑ [Blog](#): Introducing enterprise management layer for S/4HANA Cloud, extended edition



The Enterprise Management Layer in a Nutshell

The Enterprise Management Layer offers a ready-to-run, pre-configured, localized core template based on pre-activated SAP Best Practices on-premise country versions covering 43 countries. Its enhanced global design, developed specifically for multinational corporations, helps you reduce costs, decrease risks, and accelerate adoption during discovery, evaluation and implementation activities.

When to consider



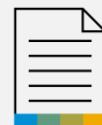
- Support **greenfield customers** but as well **customers transitioning from ECC to S/4HANA**
- "Touch" a **consumable system** for early look & feel
- Explore capabilities** of a comprehensive SAP solution for specific use cases
- Run **Fit-to-Standard** analysis with customers business experts
- Evaluate **comprehensive solution design**
- Leverage an agile, lean and international proven approach to **jump-start implementation**
- Make it tangible for customers business, allow for **hands-on experience from day ONE**
- Address resource bottlenecks in IT and business early and investigate ways to reduce time and effort

What is delivered



Preconfigured solution

- Pre-activated for **up to 43 SAP Best Practices country versions** based on S/4HANA 2020 (on premise)
- Re-designed and enhanced SAP Best Practices to **support multinational corporations**, including localization for all countries
- Available as an appliance: **database backup** (to be imported into the customer landscape)



Business content and accelerators

- Business-process documentation
- Demo and test scripts
- Configuration documents
- How-to guides



Technology

- SAP S/4HANA® 2020
- SAP Fiori® user experiences (embedded)
- Adobe Document Services
- Based on SAP Best Practices whitelist approach for client setup

Business Process Coverage



Supply Chain

- Inventory
- Warehousing

R&D and Engineering

- Product Engineering

Database & Data Management

- Enterprise Information Management

Manufacturing

- Production Engineering
- Production Operations
- Production Planning
- Quality Management

Sourcing and Procurement

- Invoice Management
- Operational Procurement
- Procurement Analytics
- Sourcing & Contract Management
- Supplier Management

Finance

- Accounting & Financial Close
- Cost Management & Profitability Analysis
- Enterprise Risk & Compliance
- Financial Operations
- Treasury Management (basic)

Asset Management

- Maintenance Management

Sales

- Order & Contract Management
- Sales Force Support

Service

- Service Operations & Processes
- Service Master Data & Agreement Management

Service Scope



Service Scope-Options

- Actual Costing
- Advanced Cash Management
- Advanced Compliance Reporting
- Advanced Receivables Management
- Contract and Lease Management
- Group Reporting
- Warehouse Management
- Advanced ATP
- Advanced Variant Configuration
- Extended Production Planning and Scheduling
- Contract Management

Service Scope-Enhancements

- Parallel Accounting
- Localization
- Intercompany Sales and Returns
- Cross-Plant Stock Transfer
- Project System for Accounting and for Engineering Project
- Letter of Credit Management

Agenda

Enterprise Management Layer – Overview

Enterprise Management Layer – Deep Dive

- Standard Scope and Optional Scope
- Enterprise Structure and Corporate Design
- Parallel Accounting
- Documentation



Business Process Scope [standard] - FINANCE

Accounting & Financial Close

1GI	General Ledger Allocation Cycle
1GO	Cash Journal
1ZT	Managing Material Price Changes and Inventory Values
2FD	Accounting for Incoming Sales Orders
2OO	External Tax Audit
2QY	SAP Fiori Analytical Apps for Asset Accounting in Finance
BEI	Period End Closing Plant
BEJ	Inventory Valuation for YearEnd Closing
BF7	Period-End Closing Maintenance Orders
BFH	Asset Under Construction
BGC	SAP Fiori Analytical Apps for G/L Accounting in Finance
J58	Accounting and Financial Close
J62	Asset Accounting
2VB	Purchase Order Accruals
40Y	Intercompany Reconciliation Processing <i>(replaced by IC40)</i>

Scope Items beyond SAP Best Practices:

AC01	Enhanced Parallel Accounting
IC40	Intercompany Reconciliation <i>(replaces 40Y)</i>
LOC01	Country-Specific Functionality
LOC**	Country-Specific Scope Items

Cost Management & Profitability Analysis

1HB	Financial Plan Data Upload from File
2I3	Commitment Management
2QL	One Allocation
34B	Statistical Sales Conditions
BEG	Standard Cost Calculation
BEV	Internal Order Actual
J54	Overhead Cost Accounting
J55	Profitability and Cost Analysis

Enterprise Risk & Compliance

1W8	Legal Control
1WC	Embargo Control
2U3	Customs Tariff Number and Commodity Code
BDT	Intrastat Processing**

AC01 Parallel Accounting replaces

1GA	Accounting and Financial Close Group Ledger IFRS
1GB	Asset Accounting Group Ledger IFRS
1GF	Asset Under Construction Group Ledger IFRS

Financial Operations

19M	Direct Debit
1JT	Lockbox <i>(US, CA)</i>
2JB	SAP Fiori Analytical Apps for Financial Accounting
2PD	Provisioning of Overdue Receivables
2UT	Complementary Invoice – Pricing <i>(BR only)</i>
2UV	Combined Invoice – Goods and Service Items <i>(BR only)</i>
2UW	Delivery of Goods on Behalf of Another Company <i>(BR only)</i>
J59	Accounts Receivable
J60	Accounts Payable
BD6	Basic Credit Management

Treasury Management

BFA	Basic Bank Account Management
BFB	Basic Cash Operations
1EG	Bank Integration with File Interface

Localization reflects standard SAP content based on SAP Best Practices

Note: Not all scope items are available for all countries!

** only for EU 16



Business Process Scope [standard] – MANUFACTURING and ASSET MGMT

Production Engineering

- 3LO Change Manufacturing Bill of Material for Production
- 3LP Mass Change Manufacturing Bill of Material for Production

Production Operations

- 1BM Make to Order Production Semi finished Goods Planning and Assembly
- 1E3 Manufacturing with Kanban Supply into Production
- 2EM Just-In-Time Supply to Customer from Stock
- 2QW Analytics for Production Unit : Plan/Actual Production Cost
- 2UG Make-to-Stock - Process Manufacturing Based on Production Order
- 3L7 Make-to-Stock with Co- and By-Products - Process Manufacturing
- 3OK Make-to-Order Production - Process Manufacturing
- 3UK Inbound Storage Tank Management - Process Manufacturing
- 3UL Make-to-Stock with Silo Material - Process Manufacturing
- 42N Tank Trailer Filling with Residuals
- 4B3 Material Replenishment with Kanban - In-House Production
- 4B4 Material Replenishment with Kanban - Stock Transfer
- BJ5 Make to Stock Production Discrete Manufacturing
- BJE Make to Order Production Finished Goods Sales and Final Assembly
- BJH Make to Stock Production Repetitive Manufacturing
- BJK Production Subcontracting External Processing
- BJN Rework Processing - Stock-Manufactured Material
- BJQ Rework Processing - Work-in-Process
- BMV Subcontracting

Production Planning

- 31L Production Capacity Evaluation
- 3LQ Production Capacity Leveling (requires Live-Cache)
- J44 Material Requirements Planning

Quality Management

- 1E1 Quality Management in Discrete Manufacturing
- 1FM Quality Management in Procurement
- 1MP Quality Management in Sales
- 1MR Quality Management in Stock Handling
- 2F9 Quality Management for Complaints against Suppliers
- 2FA Quality Management for Complaints from Customers
- 2QN Nonconformance Management
- 2QP Quality Management of Internal Problems
- 2V0 SAP Fiori Analytical Apps for Quality Management

Maintenance Management

- BH1 Corrective Maintenance
- BH2 Emergency Maintenance
- BJ2 Preventive Maintenance



Business Process Scope [standard] – ENGINEERING, SALES and SERVICE

Product Engineering

- 1NR Engineering Bill of Material Versions Management
- 1R3 Engineering Bill of Material Change Master Management
- 1R5 Engineering Bill of Material Mass Change
- 22P Manage Documents

Order and Contract Management

- 1B6 Sales Rebate Processing
- 1BS SAP Fiori Analytical Apps for Sales
- 1EZ Credit Memo Processing
- 1F1 Debit Memo Processing
- 1IQ Sales Inquiry
- 1IU Customer Consignment
- 1MC Convergent Billing
- 1MI Delivery Processing without Order Reference
- 1O0 Planning Apps for Sales
- 1Z3 Accelerated Third Party Returns
- 2EQ Sale of Services
- 2ET Sales Order Processing for Non-Stock Material
- 2QS Analytics for Sales: Central Stock with Returns

Order and Contract Management

- 2TT Sales Commissions - External Sales Representative
- 31Q Sales Order Processing for Sales Kits
- 3TE Return Order Processing for Non-Stock Material
- BD3 Sales Processing using Third-Party with Shipping Notification
- BD9 Sell from Stock
- BDA Free of Charge Delivery
- BDD Customer Returns
- BDG Sales Quotation
- BDH Sales Order Entry with One Time Customer
- BDK Sales Processing using ThirdParty without Shipping Notification
- BDN Sales of Non-Stock Item with Order-Specific Procurement
- BDQ Invoice Correction Process with Debit Memo
- BDW Returnables Processing
- BKA Free Goods Processing
- BKJ Sales Order Processing with Customer Down Payment
- BKK Sales Order Fulfillment Monitoring
- BKL Invoice Correction Process with Credit Memo
- BKN Order to Cash Performance Monitoring(Obsolete for Cloud)
- BKP Accelerated Customer Returns
- BKX Sales Order Processing SEPA Direct Debit Handling**
- BKZ Sales Order Processing with Invoice List and Collective Billing
- I9I Sales Contract Management

Sales Force Support

- 41V Presales Management

Service Operations & Processes

- 426 Service Contract Management
- 43B Service Management Overview
- 41W Interaction Center Service Request Management
- 41Z Service Order Management
- 4Q5 Solution Quotation
- SRV01 [Recurring Service](#)
- SRV02 [In-House Repair](#)

E2E Scenarios

- E2E01 [Produce and Sell Standard Products - Inventory Management](#)



Business Process Scope [standard] – SOURCING, PROCUREMENT and SUPPLY CHAIN – CROSS TOPICS

Inventory

- 4LU Physical Inventory - Cycle Counting
- BGG SAP Fiori Analytical Apps for Inventory and Warehouse Management
- BMC Core Inventory Management
- BMK Return to Supplier
- BML Physical Inventory Count and Adjustment

Logistics Material Identification

- 4MM Handling Unit Management

Sourcing & Contract Management

- 1XF Request for Price
- BMD Purchase Contract

Supplier Management

- 19C Activity Management in Procurement
- 19E Supplier Classification and Segmentation
- SL4 Supplier Evaluation and Performance Monitoring

Operational Procurement

- 18J Requisitioning
- 22Z Procurement of Services
- 2LG Supplier Consignment
- 2NX Scheduling Agreement for Subcontracting Procurement
- 2NY Scheduling Agreement for Consignment Procurement
- 2R7 Purchasing Rebate Processing
- 2TW Complementary Procurement Functions
- 2TX Direct Procurement with Inbound Delivery
- 41F Procurement of Pipeline Materials
- BMK Return to Supplier
- BMR Scheduling Agreements in Procurement
- BMY Subcontracting
- BNX Consumable Purchasing
- J45 Procurement of Direct Materials

Procurement Analytics

- 1JI Realtime Reporting and Monitoring for Procurement
- 2QU Purchase Order Visibility and Procurement Spend

Invoice Management

- 2UU Returnable Packaging to Vendor

Database and Data Management

- 1I9 Master Data Catalog for SAP S/4HANA On premise
- 2Q2 Data Migration to SAP S/4HANA from Staging
- BH5 Data Migration to SAP S/4HANA from File

Application Platform and Infrastructure

- 1LQ Output Management *
- 1NJ Responsibility Management
- 1NN Business Event Handling
- 31N Situation Handling

Time Recording

- 1FD Employee Integration SAP S/4 HANA Enablement



Business Process Scope – Scope Options *[based on SAP Best Practices]*

Scope Option	Scope Items	Comment
[00] Standard Scope (mandatory)	All scope items listed as <i>Standard Scope</i> - including customer-specific removal of countries, setup of group currency and fiscal year variant - including system landscape setup with S/4 and embedded Fiori Gateway	[not all scope items available for all countries]
[01] Actual Costing	Actual Costing (33Q)	[no additional software license required] [NOT available for: BR, CZ, SK]
[02] Advanced Compliance Reporting	Advanced Compliance Reporting (1J2)	[NOT available for: HK, NZ]
[03] Advanced Receivables Management	Advanced Credit Management (1QM) Collections and Dispute Management (BFC)	[all countries] [NOT available for: BR]
[04] Advanced Cash Management	Advanced Bank Account Management (J77) Advanced Cash Operations (J78) Bank Fee Management (2O0) Advanced Cash Management Test Cycle (CLM01*) Cash Concentration (CLM02*)	[all countries]
[05] Real Estate Management	Lease-In Accounting (LA01*) [replacing: Lease-In Accounting (1T6) + Lease-In Accounting - Group Ledger IFRS (21P)] Lease-Out Accounting (21Q) Lease-Out for Sublease Accounting (LA02*) [replacing: Lease-Lease-Out for Sublease Accounting - Group Ledger IFRS (2SA) + Lease-Out for Sublease Accounting (2SB)] Service Contract (21R) Manage Invoice for Rent (LA03*)	[NOT available for: BR; availability of scope items varies in countries]
[06] Group Reporting	Group Reporting – Financial Consolidation integrated with SAP S/4HANA Finance (GR01*) <i>(new)</i> Group Reporting - Consolidation of Investments - Actuals Activity-Based (GR02*) <i>(new)</i> Group Reporting - Financial Consolidation (1SG) Group Reporting - Plan Consolidation (28B); Group Reporting - Matrix Consolidation (3LX) Group Account Preparation for Financial Consolidation (3AF)	[all countries] [1SG NOT available for: RU] [3LX NOT available for: BR, PT] [3AF:all countries - no additional software license required]

* Scope Items specific to enterprise management layer

Note: most scope options require additional, dedicated software license!



Business Process Scope – Scope Options *[based on SAP Best Practices]*

Scope Option	Details [included Scope Items]	Comment
[11] Extended Warehouse Management (Embedded)	Basic Warehouse Inbound Processing from Supplier (1FS) Initial Stock Upload for Warehouse (1FU) Physical Inventory in Warehouse (1FW) Replenishment in Warehouse (1FY) Scrapping in Warehouse (1G0) Basic Warehouse Outbound Processing to Customer (1G2) Warehouse Inbound Processing from Supplier with Batch Management (1V5) Warehouse Outbound Processing to Customer with Batch Management (1V7) Basic Warehouse Inbound Processing from Supplier with Quality Management (1V9) Production Integration - Component Consumption and Receipt in Warehouse (1VB) Synchronous Goods Receipts in EWM For External Procurement (WM01*) <i>(new)</i> Synchronous Goods Receipts in EWM Kanban (WM02*) <i>(new)</i>	[no additional software license required] [NOT available for: AT,BR,CZ,DK,FI,ID,IN,KR,MX,NO,PL,PT,RO,RU,SA,SK,TH,TR]
[12] Advanced Warehouse Outbound Processing	Advanced Warehouse Outbound Processing to Customer (1VD)	[NOT available for: AT,BR,CZ,DK,FI,ID,IN,KR,MX,NO,PL,PT,RO,RU,SA,SK,TH,TR]
[13] Decentralized Warehouse Management - Technical Integration	Decentralized EWM - Technical Integration ERP (4UA)	[only DE and US]
[15] Advanced ATP	Advanced Available to Promise Processing (1JW) Basic Available-to-Promise Processing (2LN)	all countries
[21] Extended Production Planning and Scheduling	Demand-Driven Buffer Level Management (1Y2) Demand-Driven Replenishment Planning and Execution (2QI)	[1Y2 NOT available for BR]
[22] Advanced Variant Configuration <i>*additional HANA DB Plug-In required</i>	Make-to-Order Production with Variant Configuration (1YT) Make-to-Stock Production with Variant Configuration (21D) Set up Configurable Bill of Material using Variant Configuration (22T) Procurement of Materials with Variant Configuration (2XU) Make-to-Order Production for Sales Kits with Variant Configuration (4OC) Sales Processing using Third-Party with Variant Configuration (4R6)	[2XU, 4OC NOT available for BR 1YT NOT available for PT 4R6 ONLY available for DE, US]
[23] Enterprise Contract Management	SAP S/4HANA for Enterprise Contract Management (1XV)	[NOT available for: RU]



Enterprise Structure

Operating Concern
A000

Controlling Area
A000

Credit Control Area
1000

A000 global org. units

* Where XX represents the country code number.

Company Code DE
1010

Company Code UK
1110

Company Code FR
1210

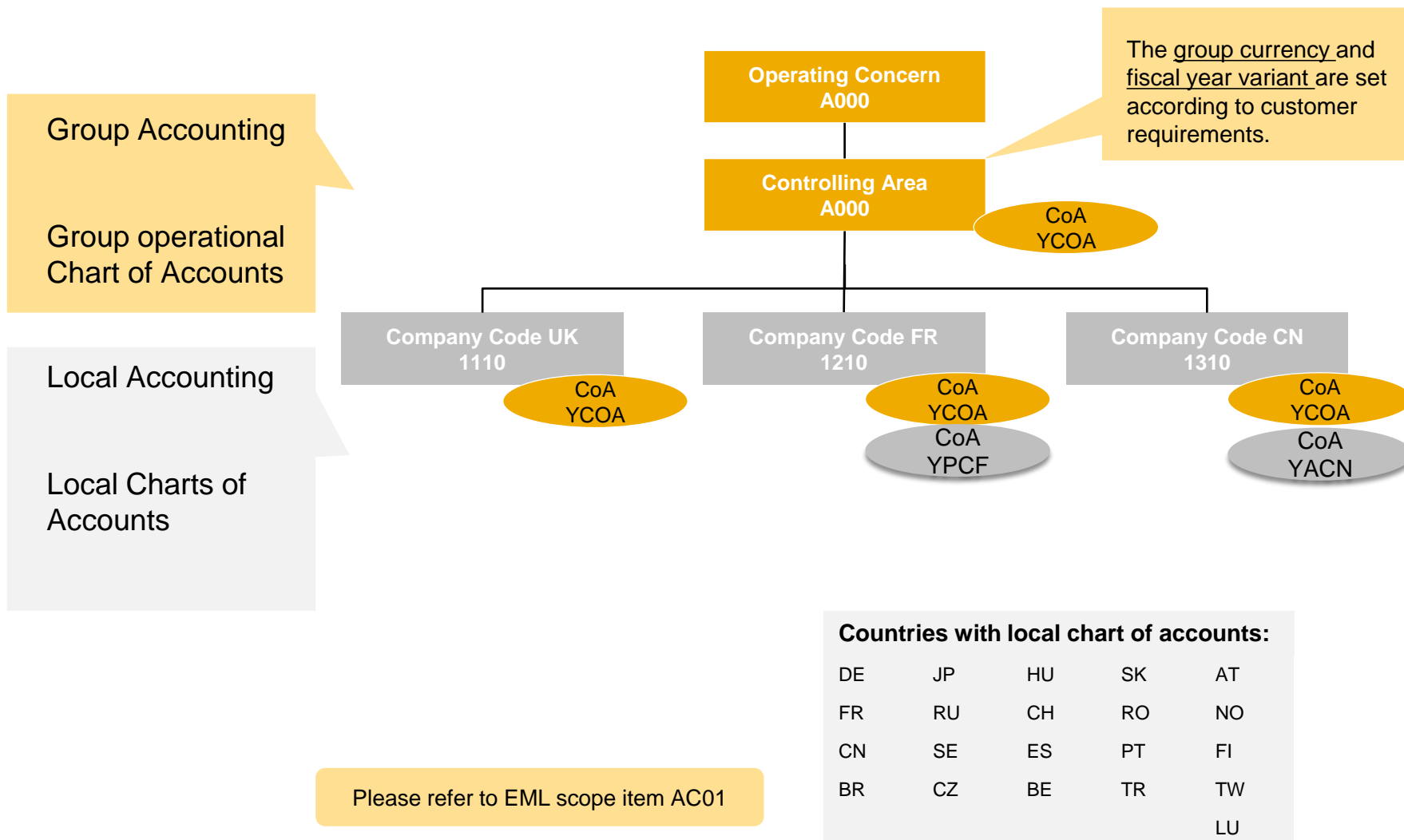
Company Code CN
1310

Company Code [Code]
XX10*

XX *	[Code]	Country	XX *	[Code]	Country	XX *	[Code]	Country	XX *	[Code]	Country
10	DE	Germany	21	HU	Hungary	33	AE	United Arab. Emirates	55	MX	Mexico
11	GB	United Kingdom	22	CH	Switzerland				58	PH	Philippines
12	FR	France	23	IT	Italy	35	PT	Portugal	59	SA	Saudi Arabia
13	CN	China	24	ES	Spain	36	TR	Turkey	61	SG	Singapore
14	BR	Brazil	25	BE	Belgium	37	NL	Netherlands	62	HK	Hong Kong
15	JP	Japan	26	PL	Poland	39	AT	Austria	63	TW	Taiwan
16	RU	Russia	27	SK	Slovakia	42	IE	Ireland	64	ZA	South Africa
17	US	USA	28	RO	Romania	43	KR	South Korea	68	TH	Thailand
18	IN	India	29	CA	Canada	44	NO	Norway	69	NZ	New Zealand
19	SE	Sweden	30	AU	Australia	45	FI	Finland	7K	LU	Luxemburg
20	CZ	Czech Republic	32	DK	Denmark	51	ID	Indonesia			
						54	MY	Malaysia			

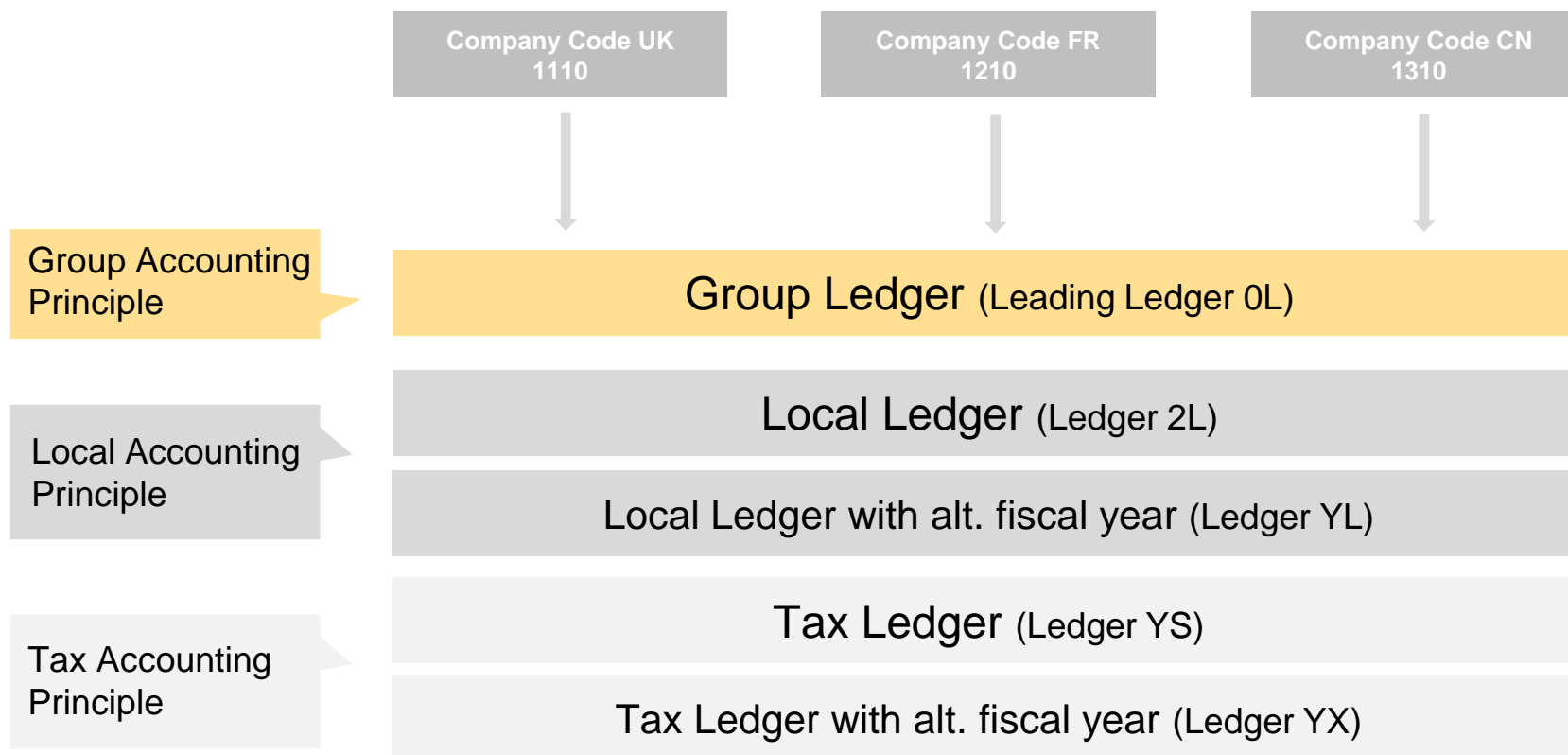


Parallel Accounting and Charts of Accounts





Parallel Accounting and Ledgers



3 accounting principles are available and linked to 5 **ledgers** in order to facilitate reporting according to group and local requirements:

- ✓ Group GAAP
- ✓ Local GAAP
- ✓ Local Tax

In addition to the group's **fiscal year variant**, alternative local fiscal year variants can be assigned on company code level in 2 dedicated local ledgers, for example for India or Japan where the fiscal year starts in April.

Please refer to EML scope item AC01

In addition, 2 **Extension Ledgers** are available:

0C	Management Accounting
0E	Commitment/Order Entry

Enterprise Management Layer	vs. SAP Best Practices
Group GAAP in Ledger 0L	Local GAAP in Ledger 0L
Local GAAP in Ledgers 2L + YL	IFRS in Ledger 2L
Tax GAAP in Ledgers YS + YX	



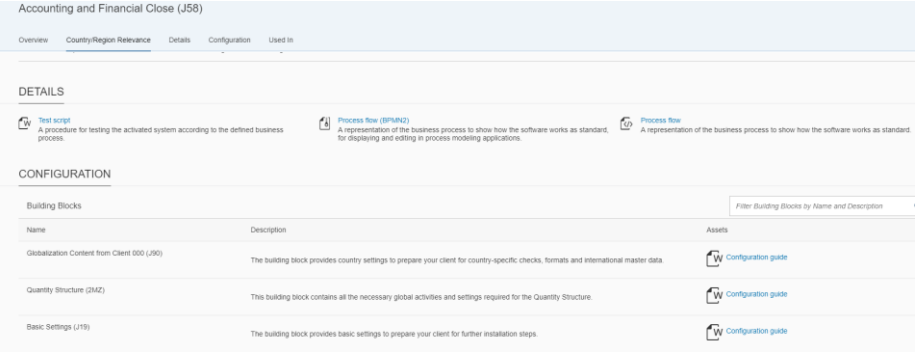
Documentation

The standard SAP Best Practices documentation can be used with the enterprise management layer:

- Overview Documentation
- Accelerators
- Process Flows per scope item
- Test Scripts per scope item

Additional documentation is available for the **enterprise management layer**

Documents	Comment
User Guides for standard scope and optional scope	Provide user guidance for each Best Practices test script / scope item in regards to: <ul style="list-style-type: none">- Introduction to Fiori user interface- Enhanced content in Finance- Additional information related to test scripts, workarounds, troubleshooting, and other important information
Additional Scope and Test Scripts	Additional documentation for standard scope and scope options Additional documentation for service options
Delta Configuration Documentation	Describes configuration and master data changes: <ul style="list-style-type: none">- Delta configuration in Finance specific to the enterprise management layer (ledgers and accounting principles)- Miscellaneous corrections and additional scope





SAP Best Practices Explorer: Documentation Specific to Enterprise Management Layer

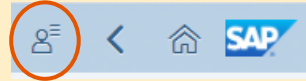
2 sets of documentation on SAP Best Practices Explorer:

[Enterprise Management Layer for SAP S/4 HANA](#)

[SAP Best Practices \(on premise\) 2020](#) (details [here](#))

Tip:

Make sure you are logged in to see full content



SAP Enterprise Management Layer for SAP S/4HANA

Description:
Accelerate and simplify the adoption of SAP S/4HANA Cloud, extend faster time to value, using the enterprise management layer

Overview Accelerators Find Out More

Solution Information

The enterprise management layer is available in two flavors: Multi-Country edition (d...
Both editions cover all major end-to-end business processes by default. Additional s...

ACCELERATORS

General Documents	Implementation
Overview Presentation Overview presentation for enterprise management layer for S/4HANA Cloud, extended edition	Starters Guide Learn about the setup of the enterprise management layer in your system and how to utilize it.
Scope item list A list of the solution scope including country availability of scope items	Documentation Library Detailed documentation and test scripts for the enterprise management layer for SAP S/4HANA Cloud, extended edition

Get the latest information and updates in SAP Notes:

3024039 - Enterprise Management Layer for SAP S/4HANA - 2020OP : Additional Information



SAP Best Practices Explorer: Documentation Specific to Enterprise Management Layer (2)

Browse Packages / SAP S/4HANA / On-Premise /

SAP Enterprise Management Layer for SAP S/4HANA SAP S/4HANA 2020

Description:
Accelerate and simplify the adoption of SAP S/4HANA for faster time to value, using the enterprise management layer

Version:
SAP S/4HANA 2020

Language:
English

Direct link to package:
https://rapid.sap.com/bp/BP_OP_EML

Overview Accelerators Find Out More

> Solution Information

ACCELERATORS

General Documents

- Solution Brief**
Key information about the enterprise management layer for S/4HANA
- Overview Presentation**
Overview presentation of the enterprise management layer for S/4HANA
- Scope Item list**
A list of the solution scope including country availability of scope items

Implementation

- Starters Guide**
Learn about the setup of the ent
- Documentation Library**
Detailed documentation and test

General overview on country and functional scope as well as general topics such as project methodology

Detailed list of scope items and their availability by country

Documentation Library with documentation specific to **enterprise management layer**:

- User Guides with additional information
- Test Scripts for additional functionality
- Configuration Documentation

Enterprise Management Layer for SAP S/4HANA and for SAP S/4HANA Cloud, extended edition Documentation Package in addition to SAP Best Practices 2020 (on premise) documentation			
V1.1-1 for 2020 FP01 - June 2021			
Documentation applies to:	File Name	Description	Comment
Standard Scope			
Test Scripts: General	EML_2020_UserGuide_EN_XX_V1.1.docx	Update: June 2021 User Guide: Must read for standard scope	Mandatory Reading before you start
Test Scripts: Finance & Localization	EML_2020_AC01_BPD_EN_XX_V1.1.docx	Parallel Accounting	Replaces 1GA, 1GB, 1GF
	EML_2020_IC40_BPD_EN_XX_V1.1.docx	Intercompany Reconciliation	Replaces 40Y
	EML_2020_LOC01_BPD_EN_XX_V1.1-2.docx	Update: June 2021 Country-specific functionality (Overview)	Additional documentation and scope
	EML_2020_LOC02_BPD_EN_DE_V1.1.docx	Localization Germany: E-Bilanz	Additional scope item
	EML_2020_LOC03_BPD_EN_EU_V1.1.docx	New: May 2021 VAT Information Exchange System - VIES (European Union)	Additional scope item
	EML_2020_LOC04_BPD_EN_ES_V1.1.docx	New: May 2021 Bills of Exchange (Spain)	Additional scope item
	EML_2020_LOC04_BPD_EN_FR_V1.1.docx	New: May 2021 Bills of Exchange (France)	Additional scope item
	EML_2020_LOC04_BPD_EN_IT_V1.1.docx	New: May 2021 Bills of Exchange (Italy)	Additional scope item
	EML_2020_LOC04_BPD_EN_AE_V1.1.docx	New: June 2021 Post Dated Cheques (United Arab Emirates)	Additional scope item
	EML_2020_LOC04_BPD_EN_TR_V1.1.docx	New: June 2021 Post Dated Cheques - Bills of Exchange (Turkey)	Additional scope item
	EML_2020_LOC06_BPD_EN_NL_V1.1.docx	New: June 2021 Chain Liability (Netherlands)	Additional scope item
	EML_2020_LOC07_BPD_EN_LU_V1.1.docx	New: June 2021 SAF-T (Luxembourg)	Additional scope item
	EML_2020_LOC07_BPD_EN_NO_V1.1.docx	New: June 2021 SAF-T (Norway)	Additional scope item
	EML_2020_SRV01_BPD_EN_DE_V1.1.docx	New: June 2021 Recurring Service (Germany)	Additional scope item
Test Scripts: Service	EML_2020_SRV01_BPD_EN_US_V1.1.docx	New: June 2021 Recurring Service (US)	Additional scope item
	EML_2020_SRV02_BPD_EN_DE_V1.1.docx	New: June 2021 Inhouse Repair (Germany)	Additional scope item
	EML_2020_SRV02_BPD_EN_US_V1.1.docx	New: June 2021 Inhouse Repair (US)	Additional scope item
	EML_2020_SRV01_Process_Overview_EN_V1.1.pdf	New: June 2021 Recurring Service: Overview	Additional scope item
Configuration: General	EML_2020_Delta_ConfigDoc_EN_XX_V1.1-1.docx	Update: June 2021 Configuration in EML, on top of SAP Best Practices	
	EML_2020_HowTo_Client_000_Customizing_EN_XX_V1.docx	Additional Information: copy standard customizing from client 000	
Scope Options			
Scope Options: all	EML_2020_UserGuide_OptionalScope_EN_XX_V1.0.docx	User Guide: Must read for optional scope	
Cash Management	EML_2020_CLM01_BPD_EN_XX_V1.0.docx	Test Cycle for Advanced Cash Management	Additional documentation
	EML_2020_CLM02_BPD_EN_XX_V1.0.docx	Cash Concentration	Additional scope item



Enterprise Management Layer versus SAP Best Practices

FAQs



Content enhanced for **Parallel Accounting**
(group/local/tax reporting)

Enhanced **localization** content

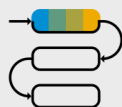
covering local reporting and business requirements in

43 countries

+ 3 countries

Localized, with smaller footprint in Finance and Controlling

Additional service scope items such as Intercompany Processes



Overall enhanced content and documentation covering all LoBs

as of March 2021

Is **parallel accounting** possible for group and local GAAP?

- Yes – **group GAAP** is the **leading** accounting principle, 2 accounting principles for **local and tax requirements**. The leading ledger is used for group, 2 ledgers for local and 2 ledgers for tax GAAP
- In **SAP Best Practices**, **local GAAP is the leading accounting principle**, IFRS for parallel accounting. One leading/local ledger and 1 ledger for IFRS reporting

Can we have **parallel currencies**?

- Yes - the **group** currency is customer-specific. The **local** currencies are predefined per country.

Can we have different **fiscal year variants** for group and local GAAP?

- Yes – the **group** FYV is customer-specific. **Local** FYVs are set in shadow local and tax ledgers, e.g. for IN or JP. (Both options are not available in SAP Best Practices)

Can the scope be **extended**?

- Yes, with **EML-specific** additional scope items that are not available with SAP BP
- With add'l scope items from **SAP Best Practices**
- **Industry-specific** scope items are under development
- Customer-specific, manual scope extensions during the project (IMG)*.

Which **software licenses** are required?

- **Core license** for the standard scope. License-relevant scope options can be activated on request.

Are **Fiori Applications** enabled?

- Yes - **embedded** in the S/4HANA system.

* **Note:** Standard settings from client 000 are not available due to whitelist approach, but can be copied from client 000.

Thank you.

Contact information:

SAP Product Content Organization

[SAP Product Content - Enterprise Mgmt Layer](#) (SAP internal)



RISE with SAP

acceleration for business transformation with EML

Vasyl Glynyanyj
Value Advisor Expert, Manufacturing & Automotive

8th & 9th December 2021

PUBLIC

RISE with SAP is... SAP approach to assisting businesses in their transformation



Disclaimer

The information in this presentation is confidential and proprietary to SAP and may not be disclosed without the permission of SAP. Except for your obligation to protect confidential information, this presentation is not subject to your license agreement or any other service or subscription agreement with SAP. SAP has no obligation to pursue any course of business outlined in this presentation or any related document, or to develop or release any functionality mentioned therein.

This presentation, or any related document and SAP's strategy and possible future developments, products and or platforms directions and functionality are all subject to change and may be changed by SAP at any time for any reason without notice. The information in this presentation is not a commitment, promise or legal obligation to deliver any material, code or functionality. This presentation is provided without a warranty of any kind, either express or implied, including but not limited to, the implied warranties of merchantability, fitness for a particular purpose, or non-infringement. This presentation is for informational purposes and may not be incorporated into a contract. SAP assumes no responsibility for errors or omissions in this presentation, except if such damages were caused by SAP's intentional or gross negligence.

All forward-looking statements are subject to various risks and uncertainties that could cause actual results to differ materially from expectations. Readers are cautioned not to place undue reliance on these forward-looking statements, which speak only as of their dates, and they should not be relied upon in making purchasing decisions.

RISE with SAP – A new Way of Working

Unique start

Customer Journey

Ultimate goal

SAP ECC customers

*SAP S/4HANA
On-premise customers*

New customers

**RISE
WITH
SAP**

Business
Transformation
as a Service

*Accelerated ROI and
Business Outcomes*

*Agile, Modern and
Modular ERP Landscape*

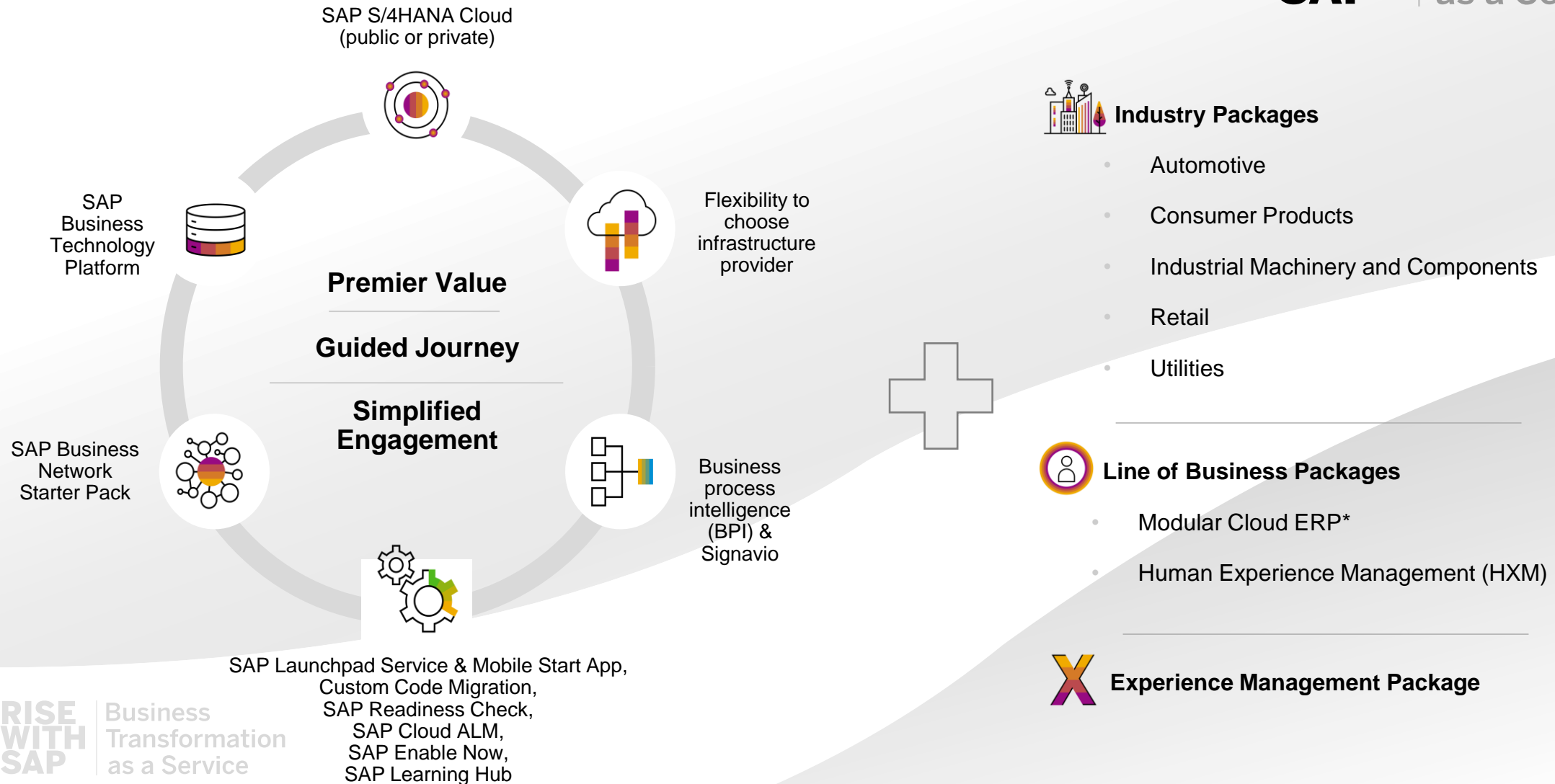
Continuous Innovation

RISE with SAP brings together what you need to transform your business in the way that works best for you – regardless of your point of departure or how fast you want to move.

**RISE
WITH
SAP** | Business
Transformation
as a Service

Building YOUR Intelligent Enterprise

**RISE
WITH
SAP** | Business
Transformation
as a Service



**RISE
WITH
SAP** | Business
Transformation
as a Service

Start Your RISE Journey

Scoping and Best Practices



The **Digital Discovery Assessment** and **SAP Best Practices Explorer** allows you to capture:



Scope Definition, e.g. select from the available business capabilities and add any additional requirements identified during your discovery.



SAP Best Practices, While designing your To-Be business processes select from best practices or **Enterprise Management Layer**.



Localization and Legal entities, e.g. the relevant countries (and number of legal entities) applicable to the opportunity.



Integration Requirements, e.g. including SAP and non-SAP systems.

Time to value is key in assuring a successful **digital transformation**

The Enterprise Management Layer offers a **ready-to-run, pre-configured**, localized core template based on pre-activated **SAP Best Practices** for Rise with SAP S/4HANA Cloud, private edition accelerating greenfield implementations

The Challenge

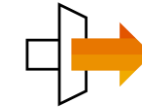
- How to start a transformation journey?
- Missing end-to-end view
- Scattered landscapes
- Managing application lifecycle and functional adoption
- Non-standardized and highly modified processes limit the ability to leverage new innovation
- International footprint and localization challenges
- Missing project documentation for change projects

The Solution

Enterprise Management Layer for SAP S/4HANA

- Pre-defined and pre-configured end-to-end business processes based on SAP Best Practices
- Localization for up to 43 country versions fully harmonized within a corporate setup
- Appliance concept allows for immediate consumption and implementation jump-start – pre-deployed, pre-tested and fully documented
- Cloud-ready deployment methodologies
- Supporting SAP Activate as the default implementation methodology
- Jump-start your “Fit-to-Standard” activities

The Value



End-to-end transformation accelerator for your project



Positive impact on Total Cost of Implementation (TCI) and Total Cost of Ownership (TCO)



Ready to scale through Partner Engagement



Accelerated Time to Innovation

Ready to run for **RISE WITH SAP** | Business Transformation as a Service

Thank you.

Contact information:

Vasyl Glynyanyj
Value Advisor Expert

Vasyl.Glynyanyj@sap.com

+49 151 6783 4062

Follow us



www.sap.com/contactsap

© 2020 SAP SE or an SAP affiliate company. All rights reserved.

No part of this publication may be reproduced or transmitted in any form or for any purpose without the express permission of SAP SE or an SAP affiliate company.

The information contained herein may be changed without prior notice. Some software products marketed by SAP SE and its distributors contain proprietary software components of other software vendors. National product specifications may vary.

These materials are provided by SAP SE or an SAP affiliate company for informational purposes only, without representation or warranty of any kind, and SAP or its affiliated companies shall not be liable for errors or omissions with respect to the materials. The only warranties for SAP or SAP affiliate company products and services are those that are set forth in the express warranty statements accompanying such products and services, if any. Nothing herein should be construed as constituting an additional warranty.

In particular, SAP SE or its affiliated companies have no obligation to pursue any course of business outlined in this document or any related presentation, or to develop or release any functionality mentioned therein. This document, or any related presentation, and SAP SE's or its affiliated companies' strategy and possible future developments, products, and/or platforms, directions, and functionality are all subject to change and may be changed by SAP SE or its affiliated companies at any time for any reason without notice. The information in this document is not a commitment, promise, or legal obligation to deliver any material, code, or functionality. All forward-looking statements are subject to various risks and uncertainties that could cause actual results to differ materially from expectations. Readers are cautioned not to place undue reliance on these forward-looking statements, and they should not be relied upon in making purchasing decisions.

SAP and other SAP products and services mentioned herein as well as their respective logos are trademarks or registered trademarks of SAP SE (or an SAP affiliate company) in Germany and other countries. All other product and service names mentioned are the trademarks of their respective companies.

See www.sap.com/copyright for additional trademark information and notices.



S/4HANA for DEUTZ China

IT Implementation Project
as a part of DEUTZ China Strategy Project



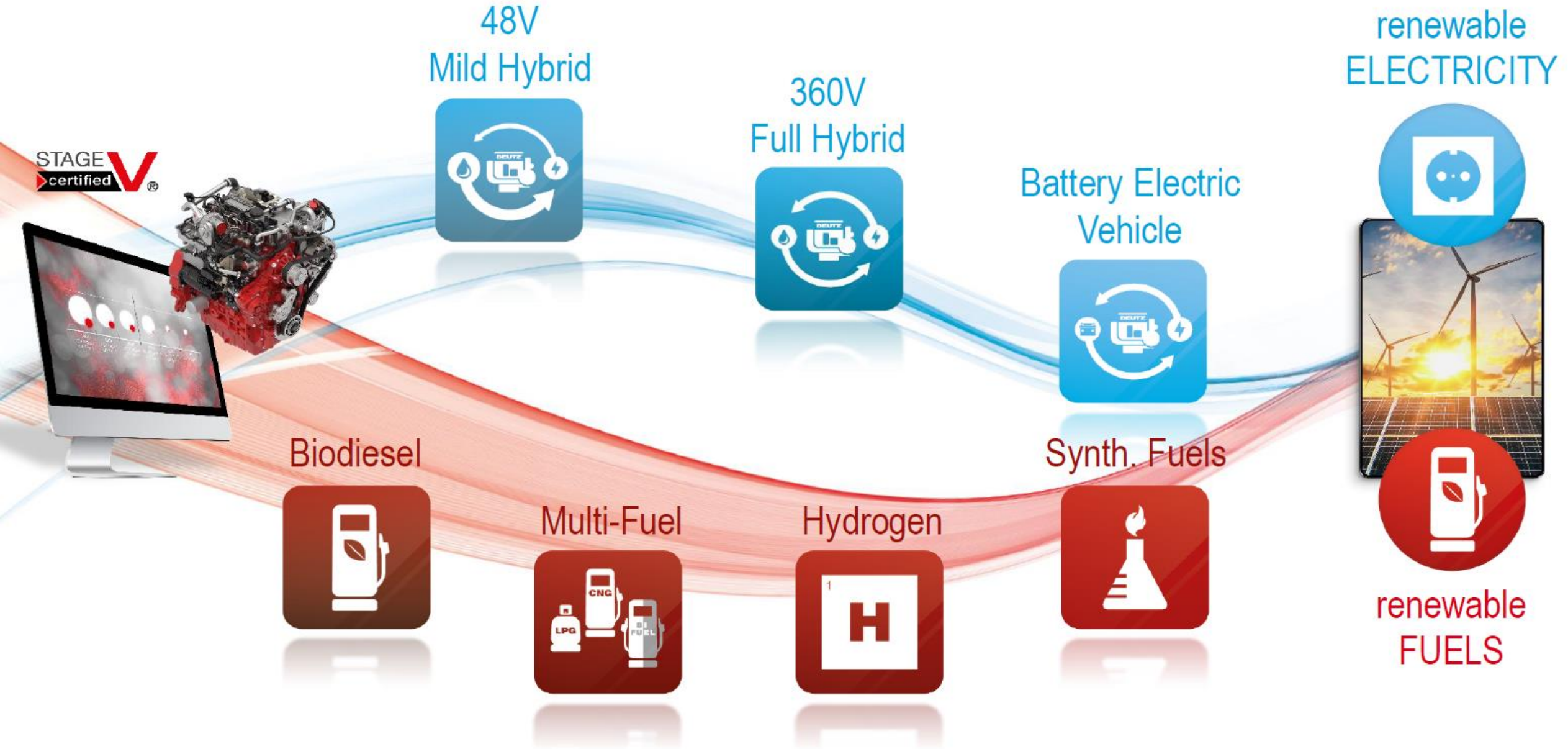
DEUTZ IT / Samy Nassif Makki

DEUTZ AG, a publicly traded company headquartered in Cologne, Germany, is one of the world's leading manufacturers of innovative drive systems. Its core competencies are the development, production, distribution, and servicing of diesel, gas, and electric drive systems for professional applications. It offers a broad range of engines delivering up to 620 kW that are used in construction equipment, agricultural machinery, material handling equipment, stationary equipment, commercial vehicles, rail vehicles, and other applications. DEUTZ has around 4,600 employees worldwide and over 800 sales and service partners in more than 130 countries. It generated revenue of almost €1.3 billion in 2020.

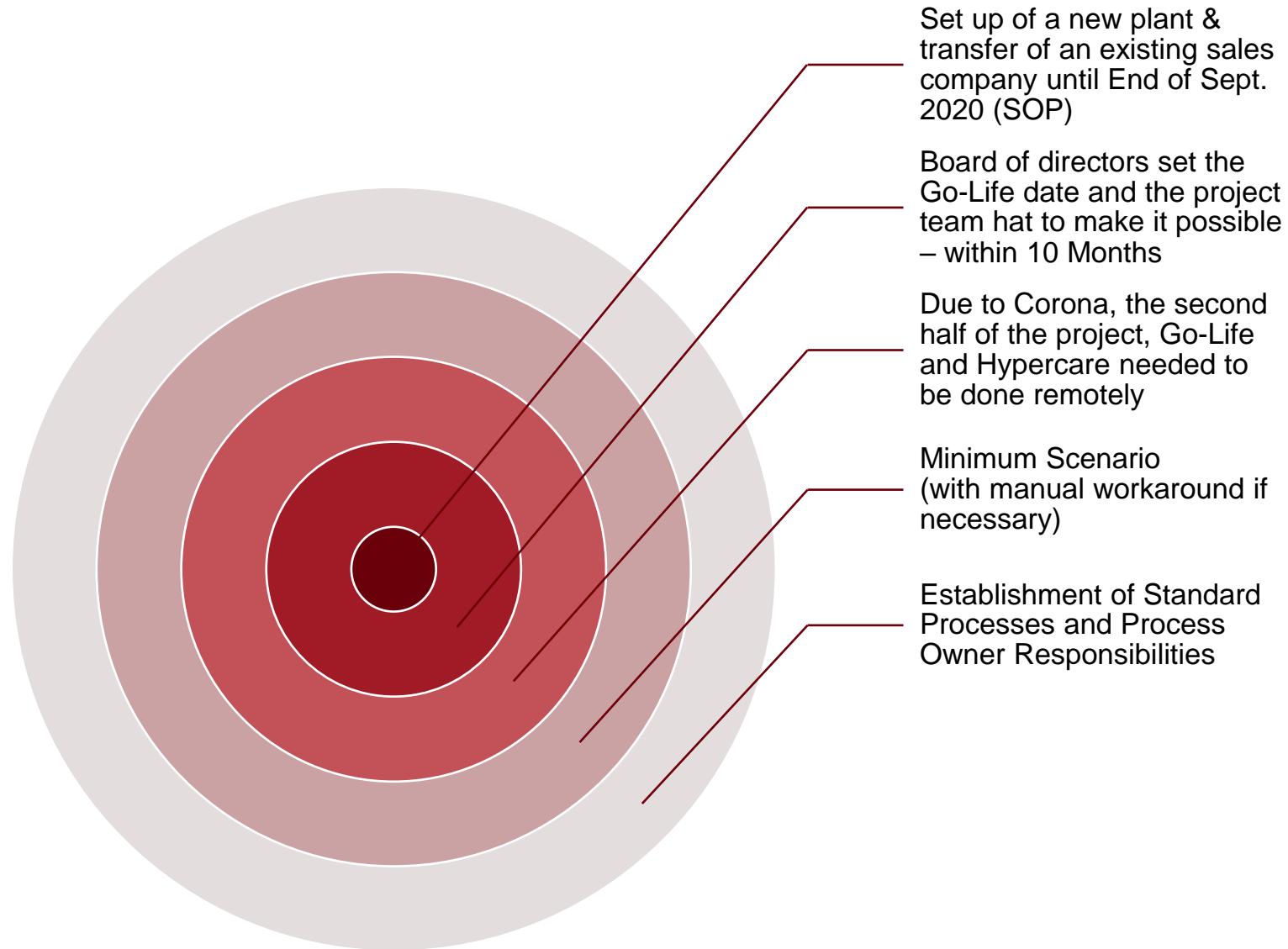
Further information is available at www.deutz.com.



DEUTZ: Advanced Drive Systems for clean Power



Project Challenges



Why do we need a SAP Model Company?

Time to value is key in assuring a successful digital transformation



THE challenge

Long and costly implementation times

Line-of-business (LoB) and industry-specific know-how recognized as a need, not a nice to have

Fast-changing business challenges requiring a flexible solution

THE solution

SAP Model Company service to deliver **preconfigured, end-to-end SAP reference solutions**

Tailored to an industry or line of business with **end-to-end business processes**

Enriched with real life experience, delivered as an **engineered service**

THE outcome

Accelerated innovation adoption and simplification of the digital transformation



Transform to SAP S/4HANA



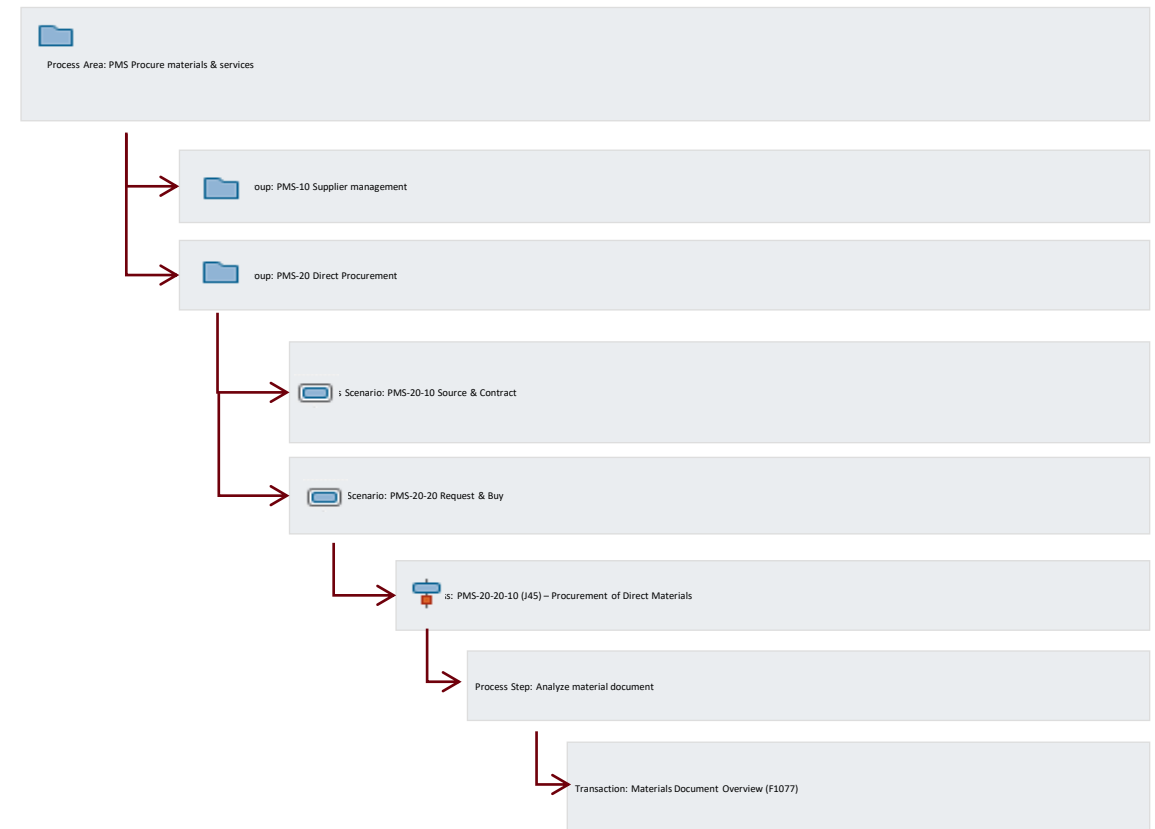
Accelerate implementation for faster time to value



Adopt early and fast, and free up resources for innovation

Configuration and How-to guides, test and demo scripts, implementation tools

- Implementation documentation
- Implementation tools
- User Guides
- Training material and How-to guides
- Configuration Guides and Executables
- Test scripts
- Demo scripts



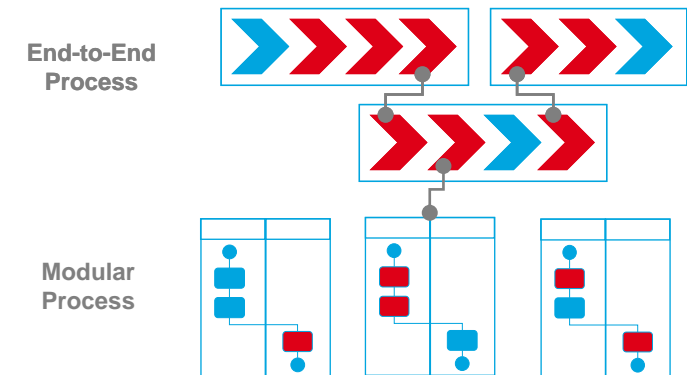
Building Block

Preconfigured End-to-End Processes



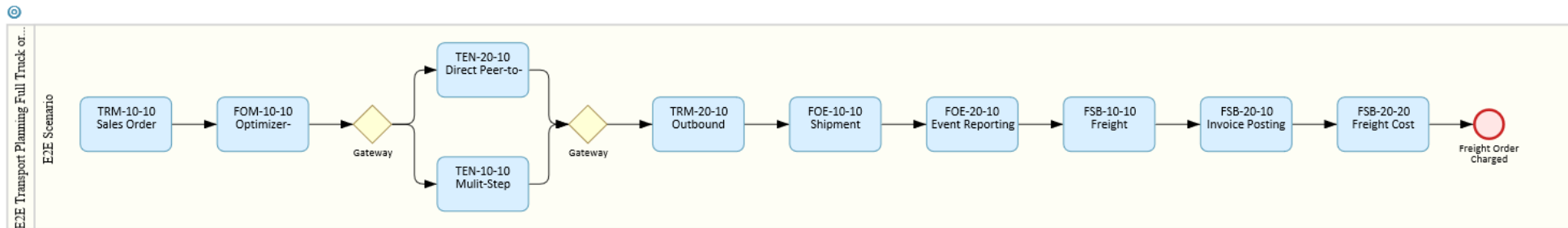
Available as a ready to run appliance, including all applications, configuration, sample data

- End-to-end business scenarios containing modular processes already configured in SAP Software
- Process hierarchies
- Role oriented process diagrams



Example:

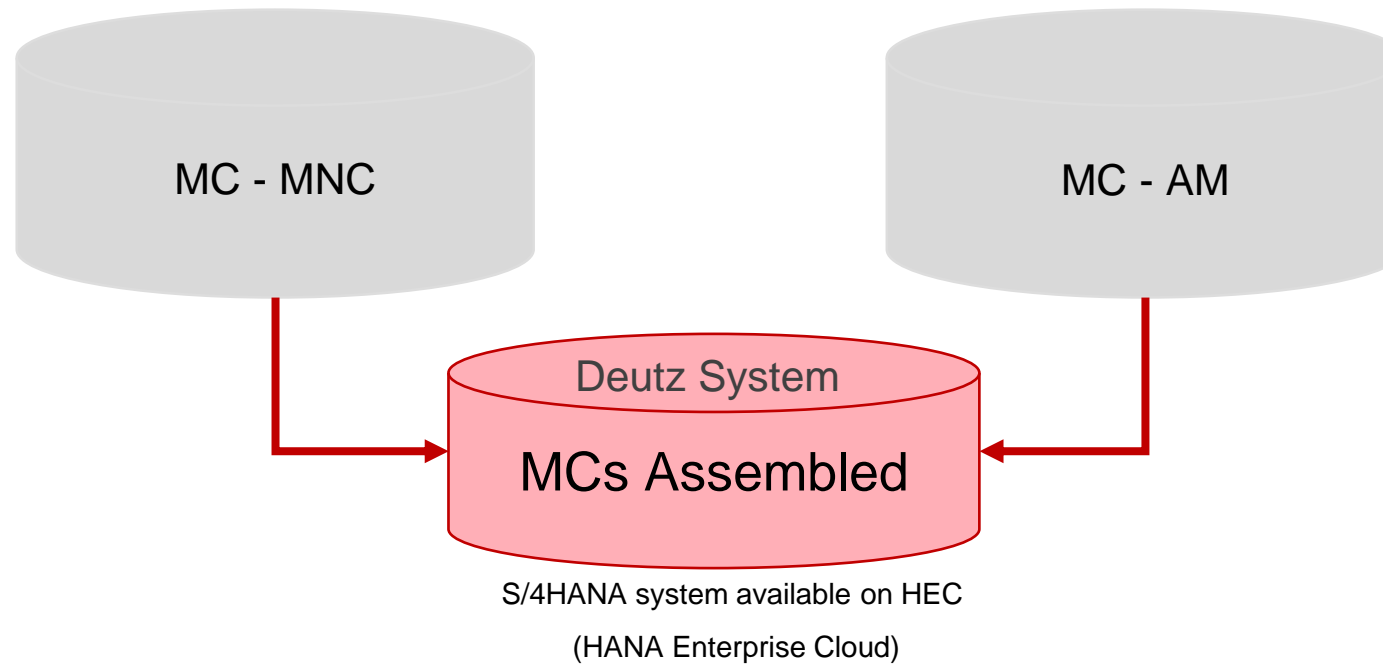
E2E Transport Planning Full Truck or Less Truck Load



Solution Scope



- Two SAP Modell Companies assembled in one SAP system
 - Multi National Corporations (MNC)
 - Automotive (AM)

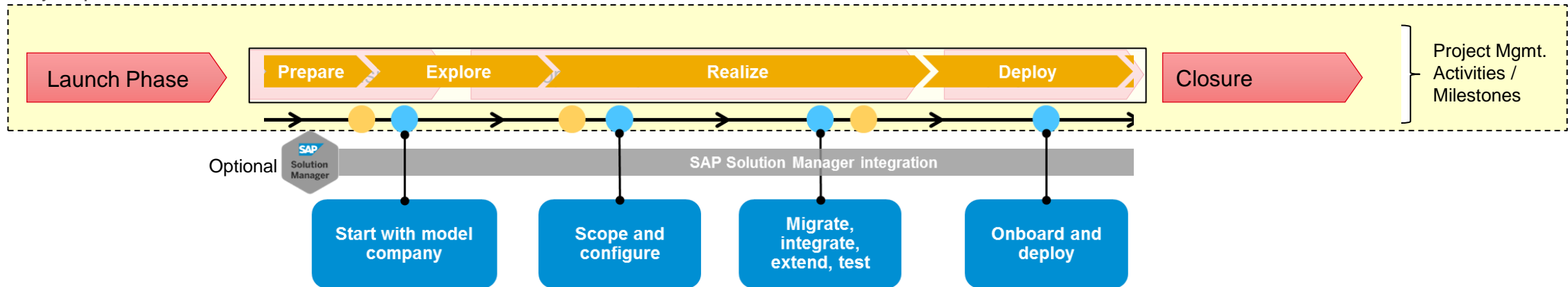


Implementation approach using SAP Model Company



- The approach to use the SAP model company as part of SAP Activate Methodology to speed up the project implementation and reduce the project time/effort.
- SAP Model Company will help us to ensure being close to SAP standard

Project phases:



Best Practice Explorer

Right Information in the right place



SAP Best Practices for SAP S/4HANA (on premise) - 1809

Standard Solution – SAP Best Practices Explorer



Browse Packages / SAP S/4HANA / On-Premise /

SAP SAP Best Practices for SAP S/4HANA (on premise) Germany, SAP S/4HANA 1809

Description:
Accelerate and simplify the path to SAP S/4HANA (on premise) for faster time to value with SAP Best Practices that are tailored specifically to simplify the adoption of SAP S/4HANA.

Version :
Germany, SAP S/4HANA 1809

Language:
English

Overview Solution Scope Accelerators Find Out More

You can display the full list of all available Scope Items per country by switching to 'Show Scope Item List'

Filter Scope Items by Name and Description

Line of Business

Select your country of choice

You will find the individual Scope Items under 'Solution Scope'

Finance

Achieve excellence in financial management & accounting with regulatory compliance and improved margins. Achieve instantaneous financial insight at any time, from anywhere using best practices and machine learning automation, in place of excel.

Accounting

In the default view all Scope Items are grouped by Line of Business, e.g. Finance -> Accounting

receivables and accounts payables in real-



Accounting and Financial Close (J58)

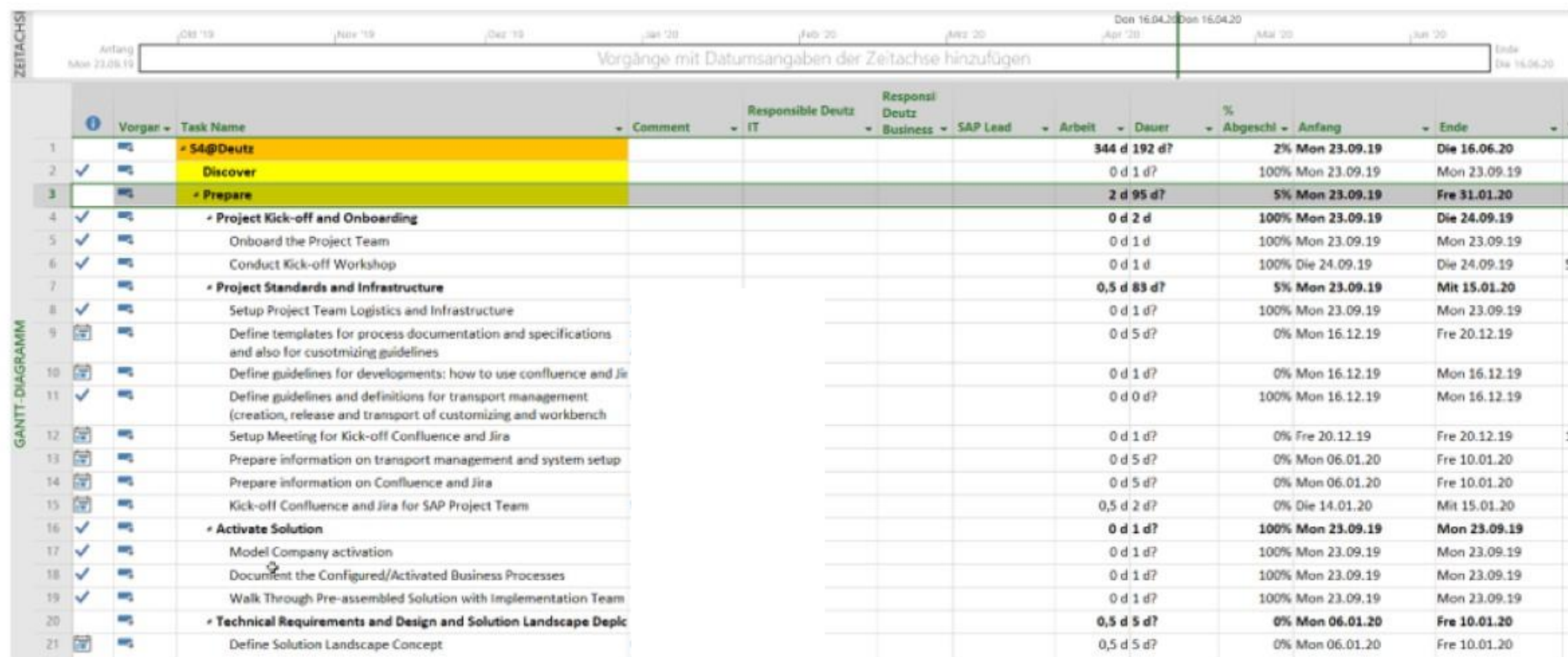
This scope item provides a comprehensive overview of external accounting and accounts.

General project approach & project plan

Classic Waterfall project planning with agile elements



- Application of MS-Project and planning in Waterfall structures – accompanied by weekly huddle meetings similar to “Sprint” meetings



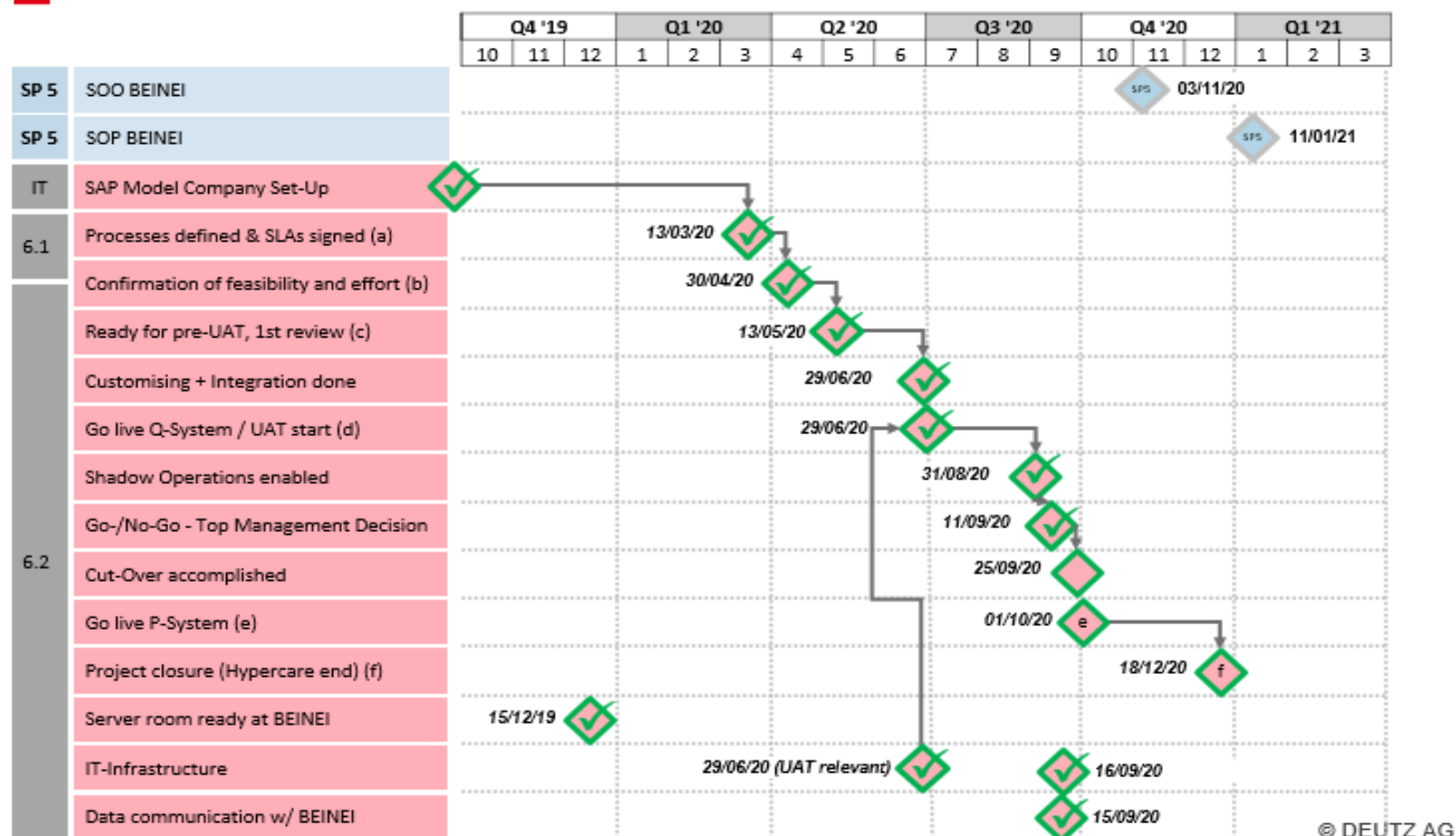
General project approach & project plan

Classic Waterfall project planning with agile elements



6. China Council of China Strategy DEUTZ AG

3.2 - Status Implementation Use Case 1: IT & Processes - Project Plan



Open-Topic List & Open-Topic List escalation via “Steckbrief”

Open Topic List



- All questions arising concerning processes and the implementation are organized in a single document for the whole team with

- Description
- Responsibilities
- Due dates
- Decisions & Remarks
- Etc.




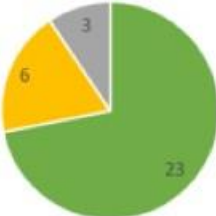

due Date	Gap raised by	Backlog Description	Comment	Process Owner (PO)	Deutz IT responsible person	Status	Must have / Nice to have?	To be clarified by whom?	Proposed Solution	Alternative Solution
04.03.2020		Repacking - What if you need to add something to a package?	Input from: After-Sales - referring to their current Processes in Cologne -> To be clarified by business area whether it will be applied in China, too?			Done	nice to have		if applicable: We will receive the goods with SAP-Standard GR-process and then it is a manual decision, if follow-up steps are required. a) Internal follow up process via VAG-Order b) External follow up process via Subcontractor order Best-before-date and production-date information is handled via batch management. If DEUTZ needs this information at goods receipt, batch-management needs to be implemented. If automatic information transmission is required, this depends on agreements with suppliers to add the information to the ASN.	1. We have to repack at goods receipt 2. We have a process for the spare (Subcontractor in Cologne, but it is the project beginning in China. This added later - Subcontracting process)
04.03.2020		At Goods-reception it might be required to add a Best-before-date and/or a production-date to the received goods. How does this work and can it be automated?	Input from: After-Sales batch not required (Ritterhaus)			Done	nice to have			It is not needed at the beginning of China but in the future should be in 2. Deutz Cologne will be in the biggest supplier of Deutz China; AG towards Deutz China for each delivery suppliers AXA not in scope for start
04.03.2020		Print label: Product label is needed	Same GAP ID as at point 232			Done	must have		Label printing: by standard SAP settings	We have to implement similar design currently in Deutz AG.
04.03.2020		How should quality material be treated? It is put away in blocked storage until it is inspected. QM material is to be put away according to the putaway strategy. After the goods inward, the products are inspected. It is standard at SAP	After workshop between Quality and EWM in 18.02.2020 it was decided: 1. The goods receipt process will be done till putaway in the warehouse, if Q wants to check a sample, the stock can be blocked in Q stock and pick 1 piece of the materials to be checked. 2. Some of the materials will be blocked directly to Q stock, after Q check if everything is ok will be released to Unrestricted Stock.			Done	must have		1. There is a QM-Workshop coming up to clarify specific QM-questions. 2. QM-related Materials should be placed from GR-Zone to a QM-clarification-bin. There (by repacking) a sample/probe can be extracted. Afterwards the Stock can be put-away into the warehouse. - of course it is possible to place the HU into the warehouse first and move it to the qualification bin at a later stage.	
04.03.2020		Advanced Shipping Notification Web platform is needed in China - connection with SAP and AXA QA -> AXA -> S/4 HANA	Input from: Mr. Rausch & Mr. Thiehoff			On Hold	nice to have		At start: Single supplier of DSH will be DAG -> therefore we will not need AXA from scratch. It is to be checked, whether we can connect DAG R/3 with DSH S/4 in order to create EGR's	Solution not found yet: Step 1: Clarification if AXA is S/4/HANA Step 2: Clarification of interface req Step 3: Estimation of interface-effort Step 4: Discussion/Decision with/to

Open-Topic List & Open-Topic List escalation via “Steckbrief”

How to include the SVP's?

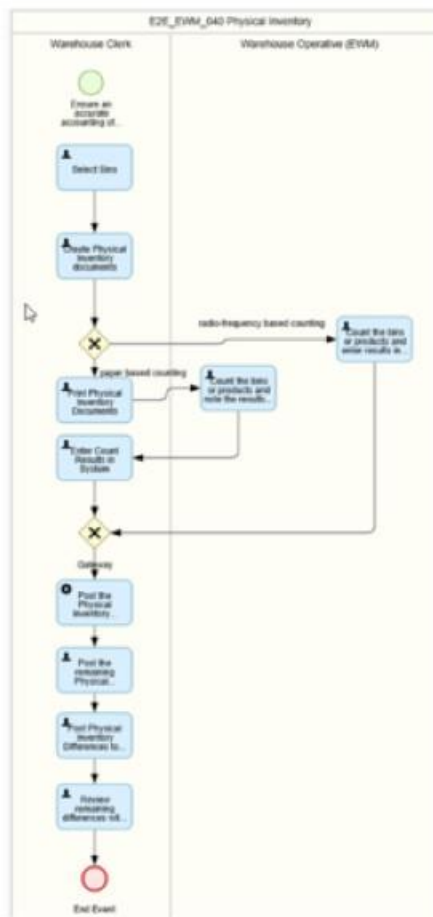


- When time is getting short and pressure rises, the SVP's asked to be informed about the open topics in their division in order to ensure timely finalization – so if needed, they get a specified document on a weekly basis

Responsible	Department:-																											
Description:																												
Process as of CW 21		<div><p>Total of 32</p><ul style="list-style-type: none">■ Done■ In Process■ On Hold</div>				<div><p>Comparison to last week</p><table border="1"><thead><tr><th>Category</th><th>CW 21</th><th>CW 22</th></tr></thead><tbody><tr><td>Done</td><td>23</td><td>23</td></tr><tr><td>In Process</td><td>6</td><td>5</td></tr><tr><td>On Hold</td><td>3</td><td>3</td></tr><tr><td>Overdue</td><td>0</td><td>1</td></tr></tbody></table></div>				Category	CW 21	CW 22	Done	23	23	In Process	6	5	On Hold	3	3	Overdue	0	1				
Category	CW 21	CW 22																										
Done	23	23																										
In Process	6	5																										
On Hold	3	3																										
Overdue	0	1																										
Tasks	IT Responsible	Business Unit Responsible	March				April	May		June	tba																	
			04.03.2020	06.03.2020	11.03.2020	31.03.2020	16.04.2020	08.05.2020	29.05.2020	01.06.2020																		
by settlement characteristics could be inherited									In Process																			
all Materials must have the correct profit center alignments									In Process																			
must be filled in Transaction KE4UF for combination Plant / Material type									In Process																			
SD Conditions must be connected to CO-PA value fields									In Process																			

Process documentation and Service Level Agreements

All processes of the BPML are documented



1 Purpose

The process begins with the generation of the required inventory count sheets. Materials can be blocked here for posting during the physical inventory. Once the inventory sheets are printed out, the actual physical inventory count is realized for the given materials. The count result is entered in the system and discrepancies in the system quantities are reviewed. The inventory may be recounted until final counts are accepted and inventory differences are posted.

This document provides a detailed procedure for testing this scope item after solution activation, reflecting the predefined scope of the solution. Each process step, report, or item is covered in its own section, providing the system interactions (test steps) in a table view. Steps that are not in scope of the process but are needed for testing are marked accordingly. Project-specific steps must be added.

2 Prerequisites

This section summarizes all the prerequisites for conducting the test in terms of systems, users, master data, organizational data, other test data and business conditions.

3 System Access

System	Details
System	Accessible via SAP Fiori launchpad. Your system administrator provides you with the URL to access the various apps assigned to your role.

4 Roles

Assign the following business roles to your individual test users.

The following roles are provided as example roles from SAP. You can use these as templates to create your own roles.

Business Role	Business Role ID as Delivered by SAP	Log On
Inventory Manager	SAP_BR_INVENTORY_MANAGER	
Warehouse Clerk	SAP_BR_WAREHOUSE_CLERK	

For more information about business roles, refer to *Assigning business roles to a user* in the [Administration Guide to Implementation of SAP S/4HANA with SAP Best Practices](#).

Customizing documentation

The customizing is documented in CONFLUENCE



- CONFLUENCE always displays the current customizing status – changes (after Go-Life) are documented with JIRA and connected to CONFLUENCE

01. Definition of Groups

Erstellt von

☒ NICHT BEGONNEN
☐ IN BEARBEITUNG
☐ DEFINITION ABGESCHLOSSEN
☐ KLÄRUNGSBEDARF

Autor:

Business Process Owner:

JIRA-Task:

Inhaltsangabe der CUSTOMIZING-Einstellung

01. Define Storage Type Groups

[Edit Document](#)

Warehouse Number	St. Type Group	Description	Stock Removal Rule	Putaway Rules	Check Max. Stor. Type Qty	Type of Max. Qty
8110	SFIF	Strict FIFO	FIFO			
8130	GSFP	Small Quantities [<] sorted by FIFO	ZSFP			
8130	ZKIT	Outbound Delivery of KIT	FIFO			

Current project and outlook



- The follow-up S/4 project is at DEUTZ Italy
- DEUTZ chose to build ab a template/blueprint based on the SAP Model company
 - Step by step from simple to complex
 - By transferring DEUTZ affiliate companies (27) first and switch the central company last due to its high complexity
- DEUTZ needed to establish a process oriented structure and responsibilities first (ongoing)
- The overall project time was 12 month in China and likewise planned for Italy
 - Expected to be reduced with the advancement of the template

Disclaimer



Alle Zahlenangaben in dieser Präsentation beziehen sich auf fortgeführte Aktivitäten, sofern nichts anderes angegeben ist.

Die Angaben in diesem Dokument beruhen auf den zum Erstellungszeitpunkt zur Verfügung stehenden Informationen. Insoweit besteht das Risiko und die Unsicherheit, dass tatsächliche Ergebnisse von vorausschauenden Aussagen abweichen. Zu solchen Abweichungen können Veränderungen der politischen, wirtschaftlichen und geschäftlichen Rahmenbedingungen, Verringerungen des technologischen Vorsprungs von DEUTZ Produkten und Verschiebungen der Wettbewerbssituation, Einflüsse von Zins- und Währungsentwicklungen, Preisentwicklungen bei Zulieferteilen sowie sonstige zum Erstellungszeitpunkt dieses Dokuments nicht erkannte Risiken und Unwägbarkeiten führen.

Eine Korrektur dieses Dokuments im Hinblick auf vorausschauende Aussagen erfolgt nicht.