



Reik Boettner

SAP SE, Senior Program Manager at “SAP One Movement” & “SAP S/4HANA Movement”

Join the SAP One Movement On Your Terms and Your Timeline

20.04.2021

Disclaimer

The information in this presentation is confidential and proprietary to SAP and may not be disclosed without the permission of SAP. Except for your obligation to protect confidential information, this presentation is not subject to your license agreement or any other service or subscription agreement with SAP. SAP has no obligation to pursue any course of business outlined in this presentation or any related document, or to develop or release any functionality mentioned therein.

This presentation, or any related document and SAP's strategy and possible future developments, products and or platforms directions and functionality are all subject to change and may be changed by SAP at any time for any reason without notice. The information in this presentation is not a commitment, promise or legal obligation to deliver any material, code or functionality. This presentation is provided without a warranty of any kind, either express or implied, including but not limited to, the implied warranties of merchantability, fitness for a particular purpose, or non-infringement. This presentation is for informational purposes and may not be incorporated into a contract. SAP assumes no responsibility for errors or omissions in this presentation, except if such damages were caused by SAP's intentional or gross negligence.

All forward-looking statements are subject to various risks and uncertainties that could cause actual results to differ materially from expectations. Readers are cautioned not to place undue reliance on these forward-looking statements, which speak only as of their dates, and they should not be relied upon in making purchasing decisions.

Five top reasons why to move to SAP S/4HANA now

You cannot afford to wait. These are the top five realities:

1 Innovate before competitors

3 Champion cost savings

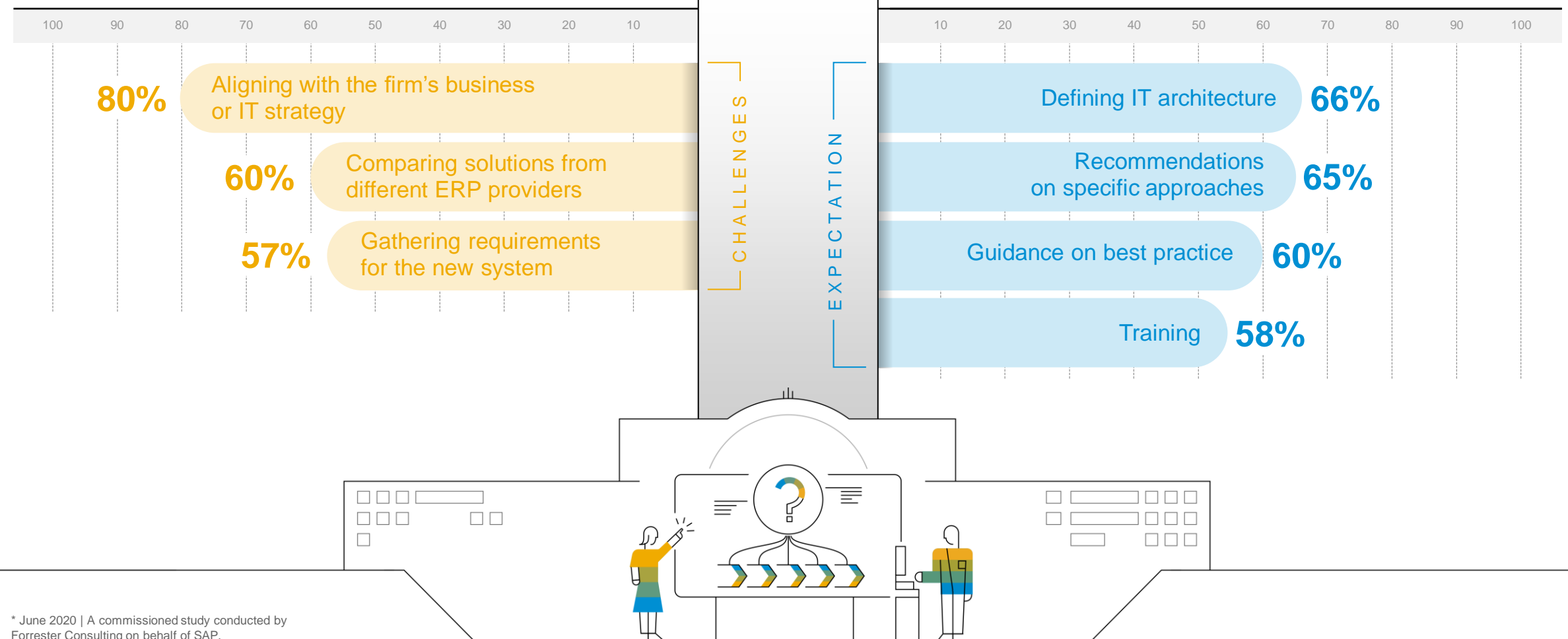
5 Grow with modern cloud ERP

2 Run in uncertainty

4 Pivot at market speed

What are our customers' challenges and what do they expect from us?

Common ERP challenges*



* June 2020 | A commissioned study conducted by Forrester Consulting on behalf of SAP.

We stand committed not to leave any customer behind on their journey to the intelligent enterprise.

What

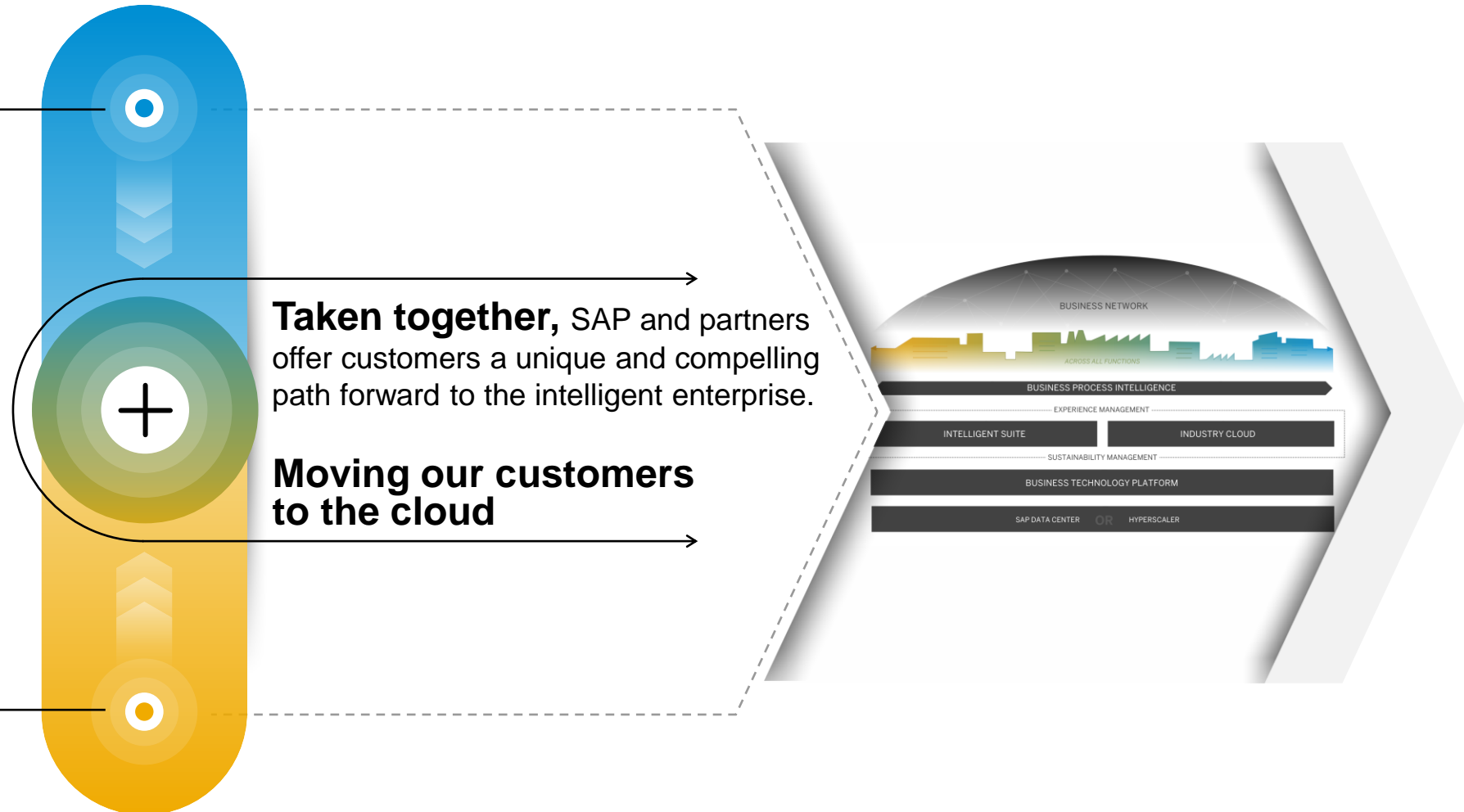
RISE with SAP

Is a single-priced offering that bundles together capabilities and services to deliver business transformation as a service with key components (cloud solutions, platform, tools).

Is an initiative that complements the RISE with SAP package by offering tailored guidance and expertise for a migration from legacy systems to the intelligent enterprise.

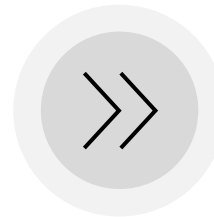
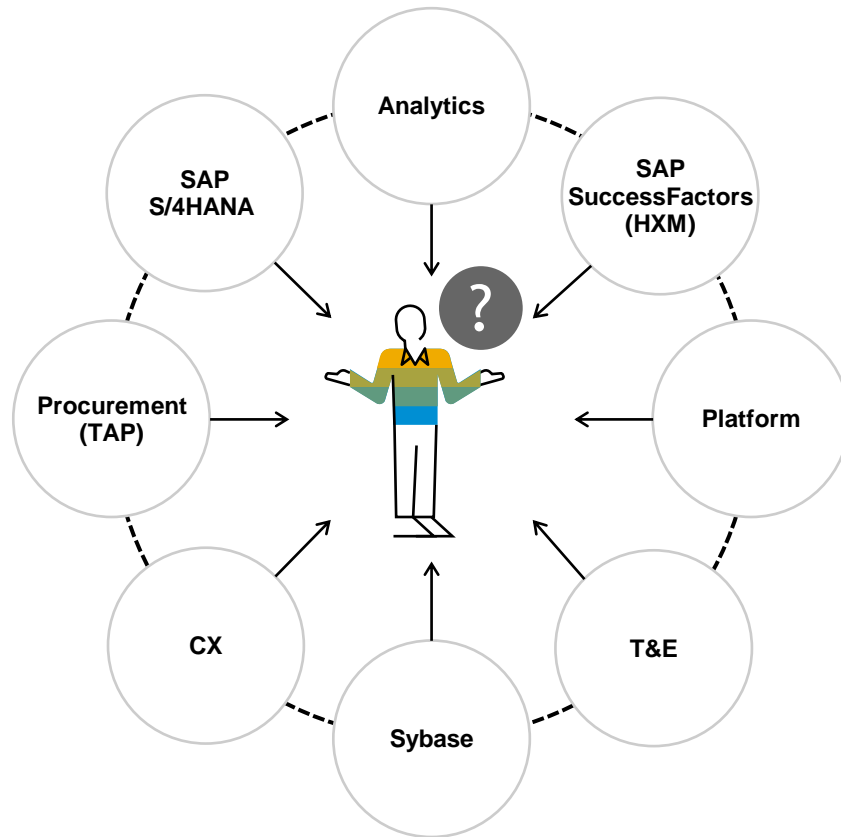
SAP One Movement

Why and how

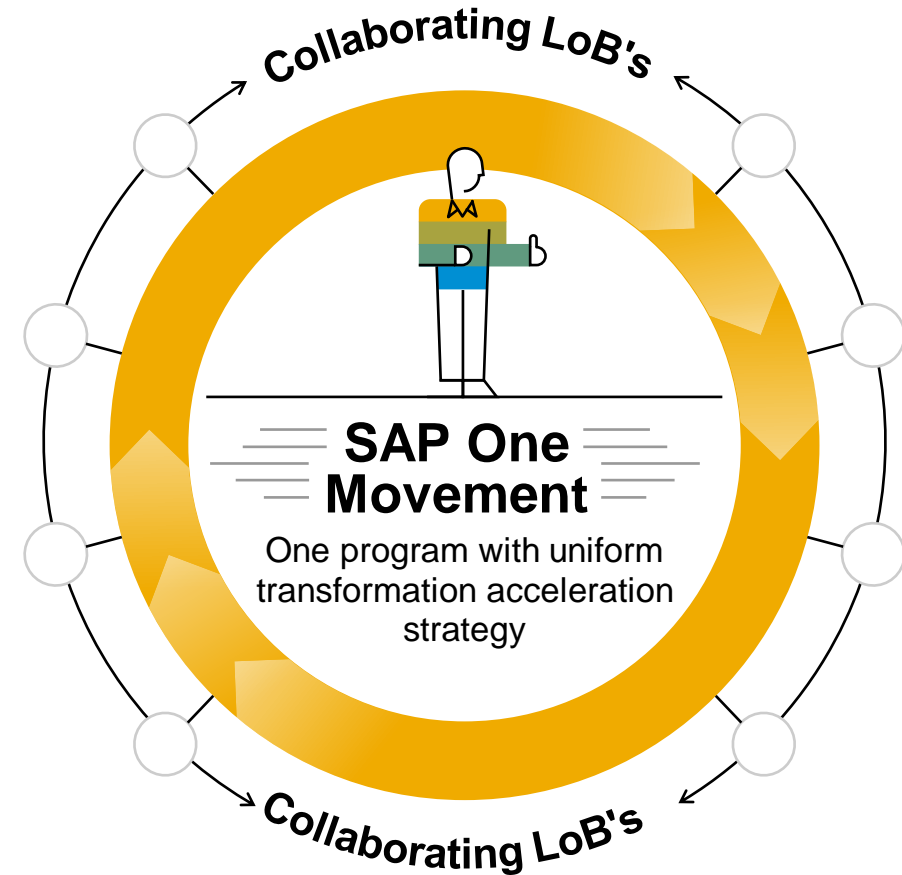


SAP One Movement extends success to other SAP Moves...

Today



Tomorrow



SAP One Movement initiative

What

The RISE with SAP package

Applications
**SAP S/4HANA
Cloud**

Platform
**SAP Business
Technology
Platform**
(CPEA credits)

Network
**SAP Business
Network**
(starter package)

Infrastructure
**Provider of
choice**

Business process intelligence
with business process redesign

Tools and training
for migration, optimization,
and innovation

Services, assets, and additional tools from SAP and partners

**Align on vision
and strategy**

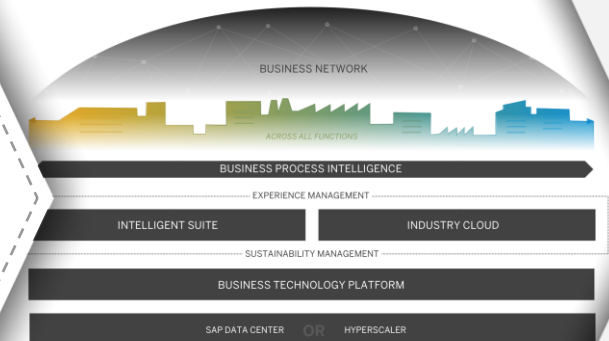
**Build
the case**

**Plan the path
forward**

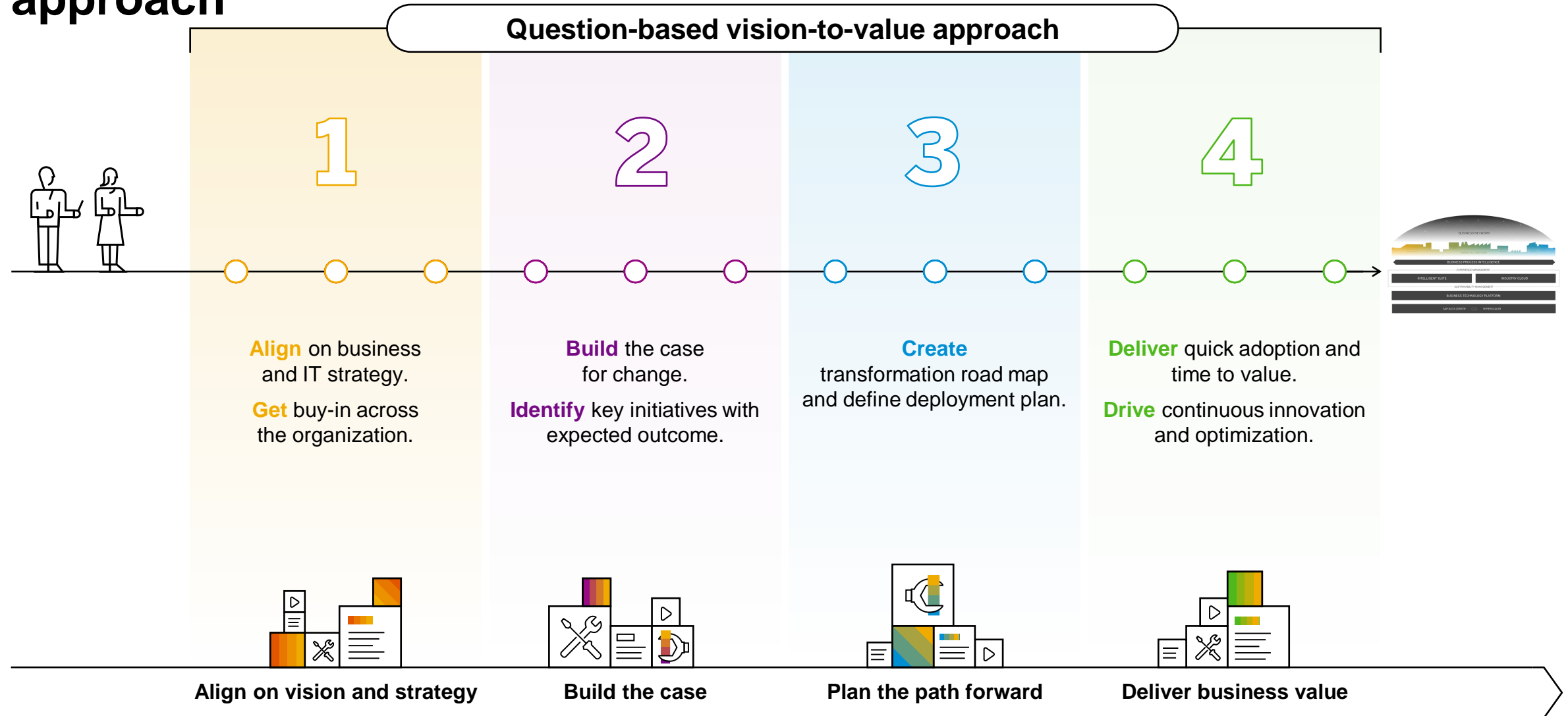
**Deliver business
value**

SAP One Movement

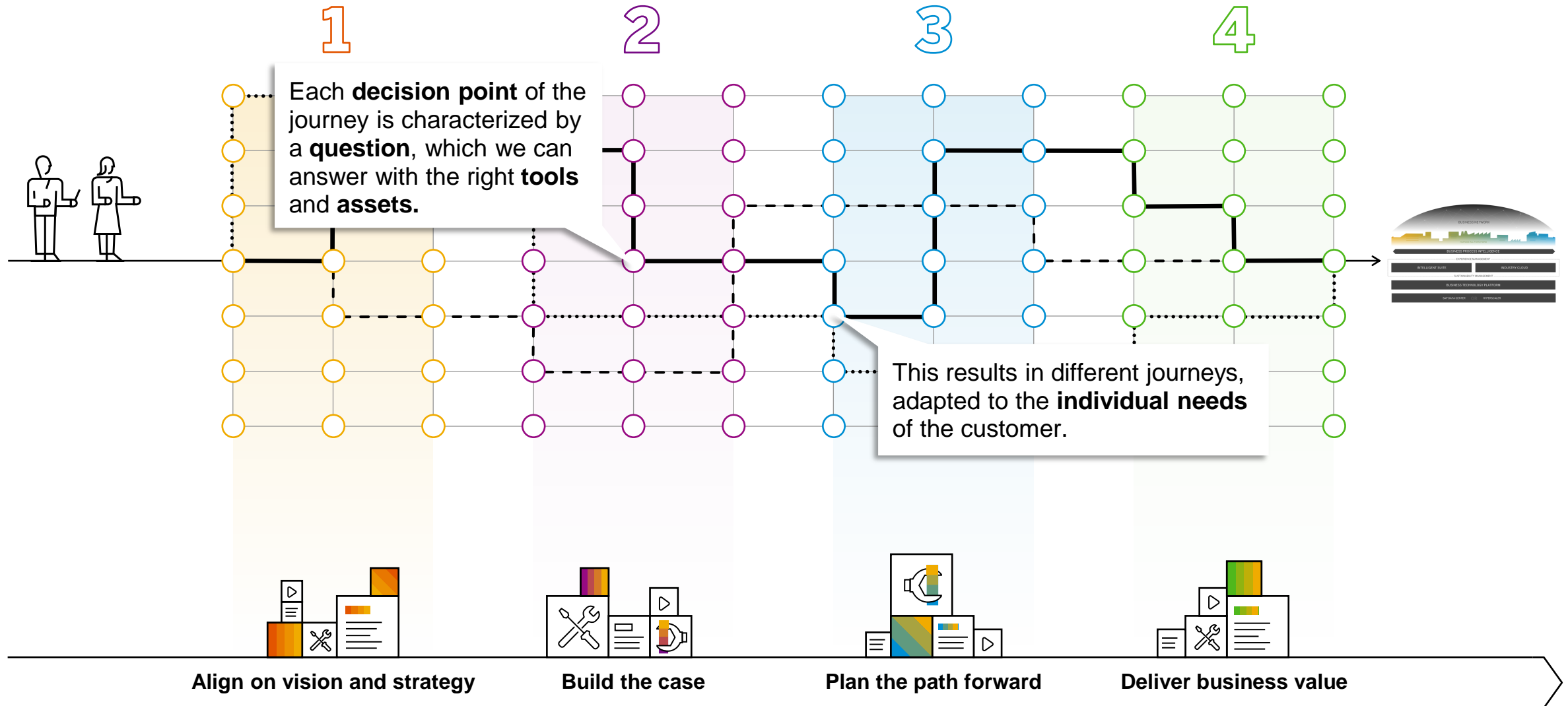
Why and how



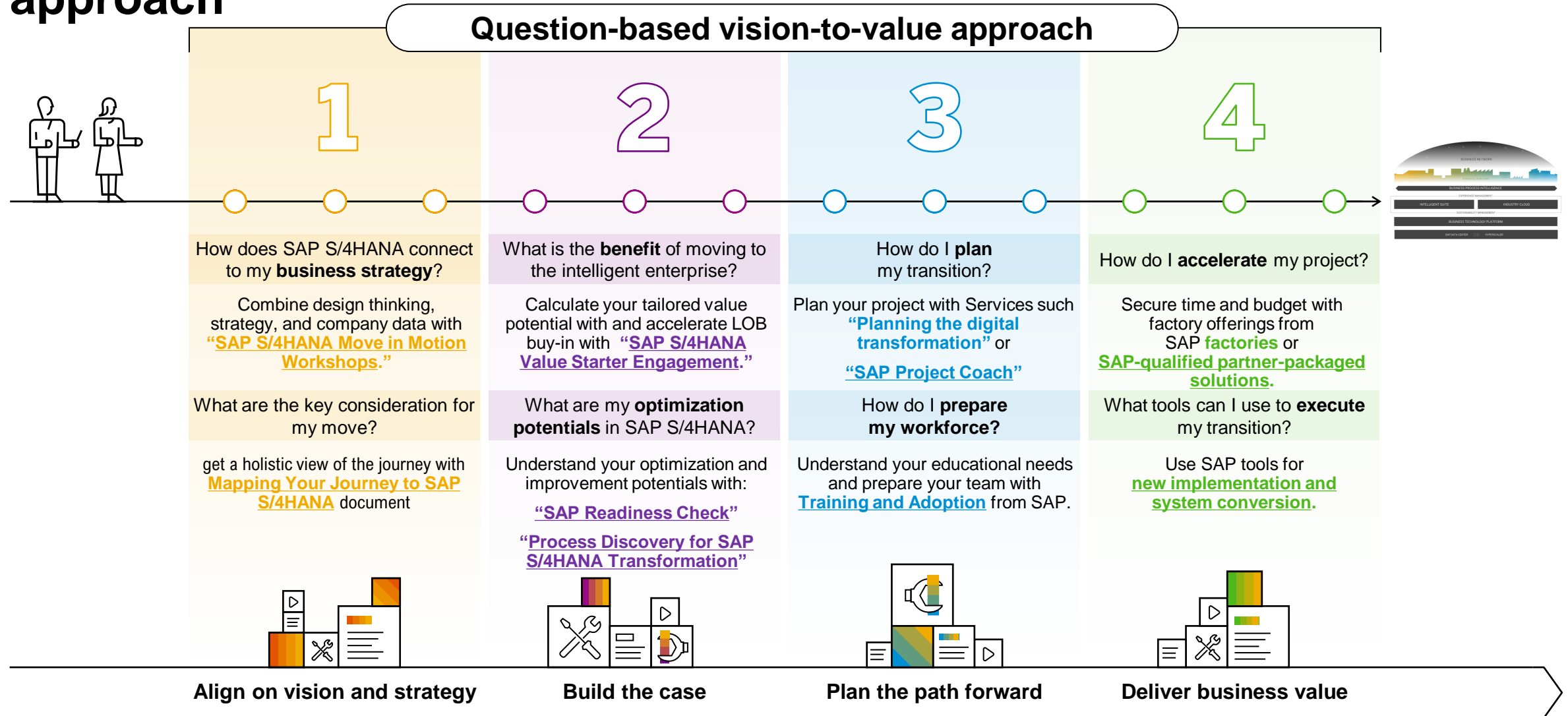
SAP One Movement uses the question-based vision-to-value approach



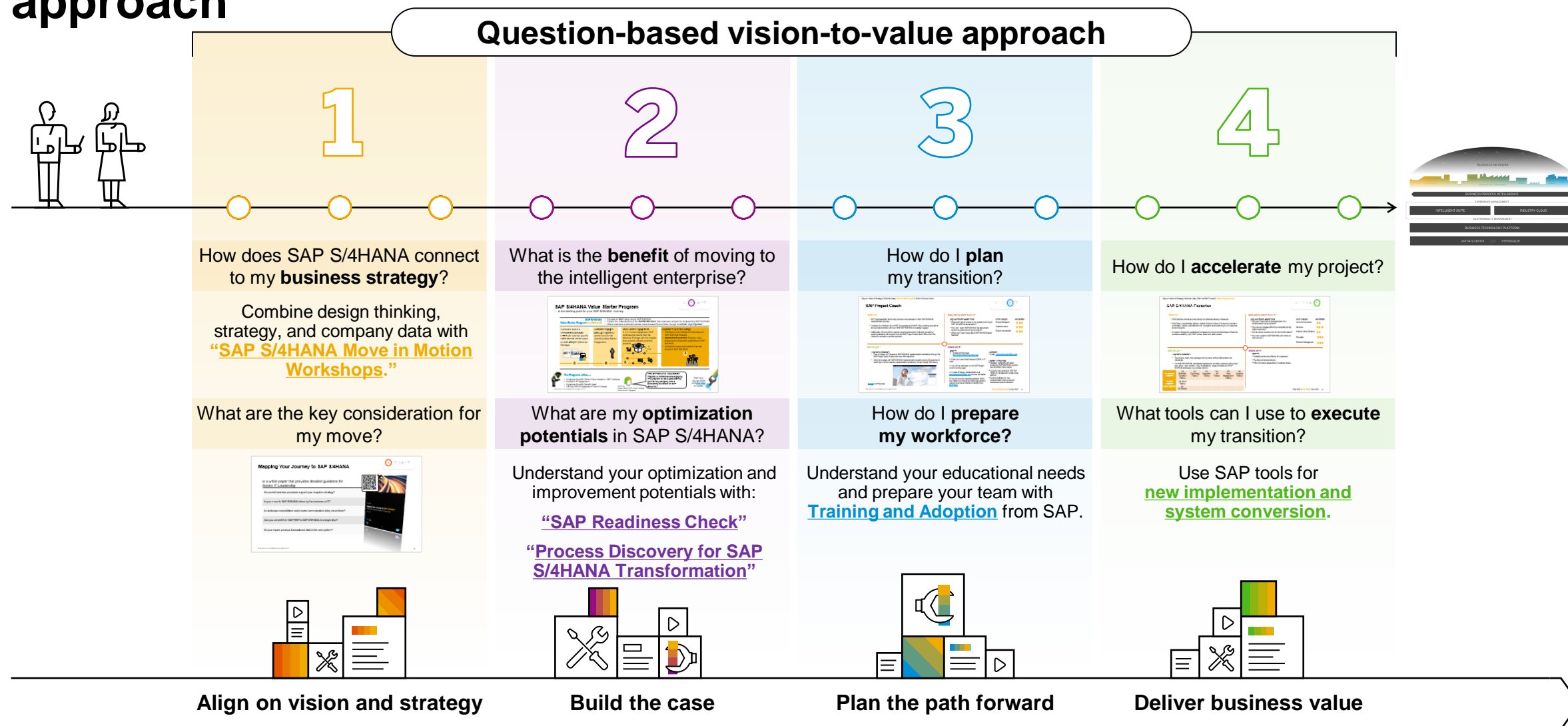
Focusing on individual journeys to the intelligent enterprise



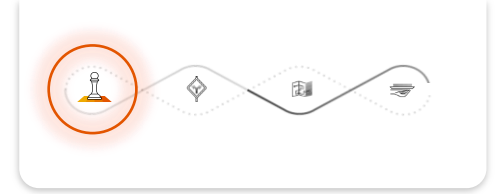
SAP One Movement uses the question-based vision-to-value approach



SAP One Movement uses the question-based vision-to-value approach



Mapping Your Journey to SAP S/4HANA



is a white paper that provides detailed guidance for Senior IT Leadership

Do current business processes support your long-term strategy?

Is your move to SAP S/4HANA driven by the business or IT?

Is landscape consolidation and process harmonization a key value driver?

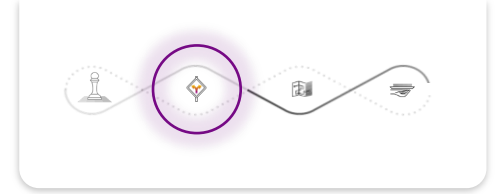
Can you convert from SAP ERP to SAP S/4HANA in a single step?

Do you require previous transactional data in the new system?



SAP S/4HANA Value Starter Program

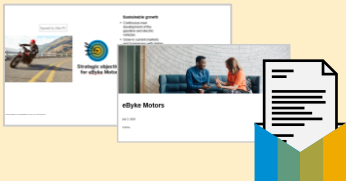
... is the starting point for your SAP S/4HANA Journey



SAP S/4HANA Value Starter Program in a Nutshell

- Focuses on **WHY** move now to SAP S/4HANA
- Fosters the understanding of the **incremental value** that customers will gain by implementing SAP S/4HANA
- Offers customers a tailored business value focused Point-of-View through an **outside-in perspective**

Customers receive a **Personalized Welcome Letter** with customer-specific **Point of View Teaser** based on **360° Analysis** (Welcome Package)



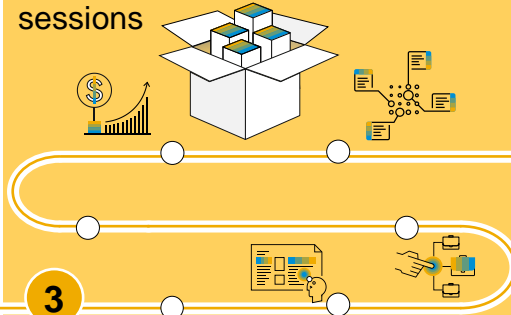
1

Customer engages with SAP Experts to set the focus for the upcoming Value Starter Engagement



2

Value Starter Engagement in a 3 x ½ day engagement SAP combines the results from the Welcome Package with the insights from remotely offered workshop sessions



3

Outcome = Case for Change

- Priorities for the Intelligent Enterprise and SAP S/4HANA Strategy
- **Improvement potential** linked to value drivers and incremental capabilities of SAP S/4HANA
- Individual incremental possible financial benefit of SAP S/4HANA

4



The Programs offers...

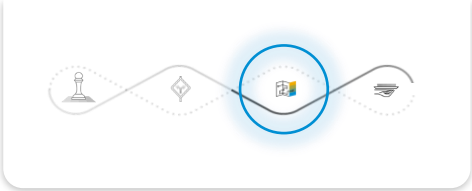
- Customer-Specific Point of View based on 360° Analyses
- Guided 1:1 Engagement
- Customer-Specific Benefit Case
- 1.5 Day Effort Engagement Free of Charge



Jean Ong
Supply Chain & SAP Project Manager,
Home Control, Singapore

"The SAP S/4HANA Value Starter Program is informative and engaging. This program will be a good starting point for any company who is considering to embark on SAP S/4HANA."

Start Your Journey NOW and [click here](#) to register



SAP Project Coach

What is it?

- 24*7 Implementation tool to help partners and customers in their SAP S/4HANA implementation journey
- Consists of a Chatbot built on SAP Conversational AI (SAP CAI) providing resolutions during implementation with over 1800 SAP S/4HANA knowledge nuggets
- Additionally, this tool offers customer project teams option of directly scheduling coaching sessions with experts from the SAP Project Coach Back Office when the Chatbot is not able to provide a solution

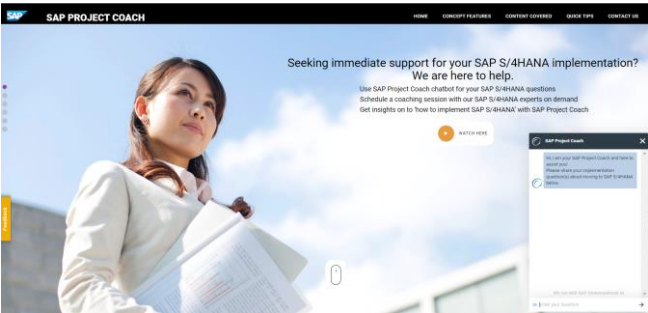
Why | When | Where to use it?

Key Questions Addressed	User Groups	Relevance
■ Where do I get an answer to my questions during an SAP S/4HANA implementation?	Project Managers	★ ★ ★
■ How can I reach SAP S/4HANA implementation experts to guide me during my project?	Customer team	★ ★ ★
■ Where can I learn more about SAP S/4HANA latest features?	Project Consultants	★ ★ ★

What do I get?

Expected outcomes

- Free of charge 24*7 access to SAP S/4HANA implementation assistance through the SAP Project coach chatbot with over 1800 solutions
- Option to engage with SAP S/4HANA implementation experts across 10 domains for coaching on how to resolve implementation situations (bought through SAP store)



[Access](#) Landing page

How to use it?

Access

1. Access landing page : <https://projectcoach.services.sap>
2. Enter your userid and password (S/D/I or P user)
3. You will be redirected to the SAP Project Coach Landing page
4. In case of issues, please email us at sapprojectcoach@sap.com and we can assist
5. You can buy the coaching sessions within the chatbot by clicking the hamburger symbol next to input box of chatbot or directly from [SAP Store](#)

Contacts

- Email : sapprojectcoach@sap.com

Update Frequency

- Updated fortnightly with latest content on SAP S/4HANA currently has S/4HANA 2020 content
- Currently has content for SAP S/4 HANA on premise and private cloud editions
- Content available for new implementation and conversion scenarios across 10 domains



SAP S/4HANA Factories

What is it?

- IDG Factories provide services through an advanced delivery framework.
- IDG Factory Industrialised delivery models (Factory Delivery Framework) provide a predictable, reliable, cost effective and consistent service delivery to our customers across the globe
- A common framework, established processes and robust methodologies of factories provides scalability, high CSAT scores, faster and better results.

Why | When | Where to use it?

Key Questions Addressed

- How can ‘Total Cost of Implementation’ of a transformation being reduced?
- How can we increase efficiency and quality during project execution?
- How to reduce business risk for the transformation?
- How can I switch to SAP S/4HANA with minimum time and risk ?

User Groups

Account Executives	★ ★
Services	★ ★ ★
Industry Value Advisors	★ ★
Pre-sales	★ ★ ★
Solution Management	★ ★ ★

Relevance

What do I get?

Expected outcomes

- Fixed scope, fixed price packages having clearly defined deliverables and milestones
- Our SAP S/4HANA lite and detailed assessment provides customers with project plan, effort , cost, duration , risks & mitigations , target architecture of SAP S/4HANA landscape (op-premise /Cloud)

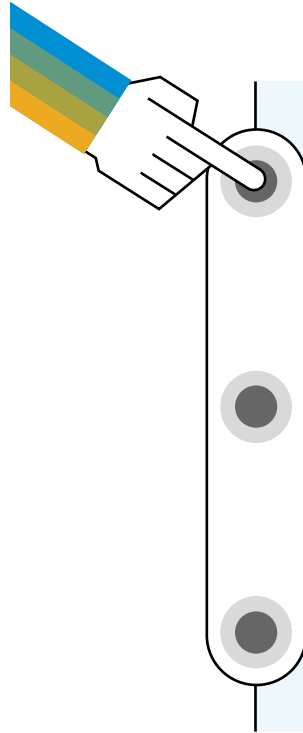
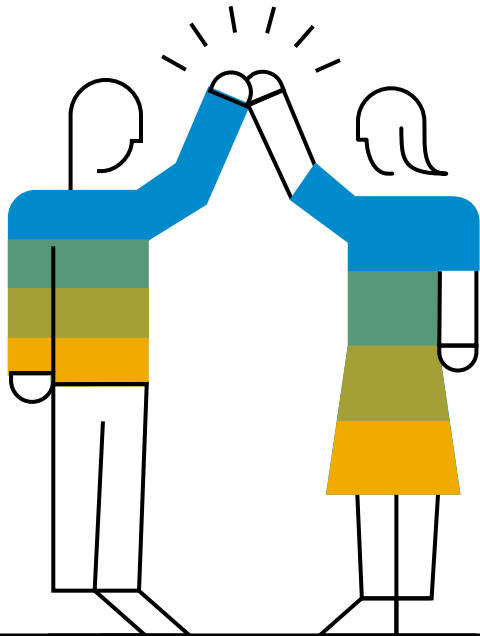
How to use it?

Access

- Available as Service Offering for Customers
- Flexible and remote delivery
- Effort & Duration depending on customer scope

1.S/4HANA Factories	1.1 S/4HANA Transition Factory	1.2. Technology Factory	1.3. Integration Factory	1.4. UX Factory	1.5. Data Management Factory	1.6. Analytics Factory
2.Cloud Factories	2.1.Cloud Factory					
3.CX Factories	3.1. CX Factory					

Let's MOVE together



Visit the [SAP S/4HANA Movement](#) web site.



Explore your [Learning Journey](#) today.
[Discover SAP S/4HANA Movement](#) on Open SAP



Contact us with s4move@sap.com.



Thank you.

Q&A

+ Feedback

Follow us



www.sap.com/contactsap

© 2021 SAP SE or an SAP affiliate company. All rights reserved.

No part of this publication may be reproduced or transmitted in any form or for any purpose without the express permission of SAP SE or an SAP affiliate company.

The information contained herein may be changed without prior notice. Some software products marketed by SAP SE and its distributors contain proprietary software components of other software vendors. National product specifications may vary.

These materials are provided by SAP SE or an SAP affiliate company for informational purposes only, without representation or warranty of any kind, and SAP or its affiliated companies shall not be liable for errors or omissions with respect to the materials. The only warranties for SAP or SAP affiliate company products and services are those that are set forth in the express warranty statements accompanying such products and services, if any. Nothing herein should be construed as constituting an additional warranty.

In particular, SAP SE or its affiliated companies have no obligation to pursue any course of business outlined in this document or any related presentation, or to develop or release any functionality mentioned therein. This document, or any related presentation, and SAP SE's or its affiliated companies' strategy and possible future developments, products, and/or platforms, directions, and functionality are all subject to change and may be changed by SAP SE or its affiliated companies at any time for any reason without notice. The information in this document is not a commitment, promise, or legal obligation to deliver any material, code, or functionality. All forward-looking statements are subject to various risks and uncertainties that could cause actual results to differ materially from expectations. Readers are cautioned not to place undue reliance on these forward-looking statements, and they should not be relied upon in making purchasing decisions.

SAP and other SAP products and services mentioned herein as well as their respective logos are trademarks or registered trademarks of SAP SE (or an SAP affiliate company) in Germany and other countries. All other product and service names mentioned are the trademarks of their respective companies.

See www.sap.com/trademark for additional trademark information and notices.