



# **SAP's Intelligent Enterprise strategy**

## **... it's all about adoption**

Carsten Puschke | Dir. Prod. Mgmt. Intelligent Enterprise & BTP Foundation, Technology & Innovation | SAP SE

EXTERNAL



# Disclaimer

The information in this presentation is confidential and proprietary to SAP and may not be disclosed without the permission of SAP. Except for your obligation to protect confidential information, this presentation is not subject to your license agreement or any other service or subscription agreement with SAP. SAP has no obligation to pursue any course of business outlined in this presentation or any related document, or to develop or release any functionality mentioned therein.

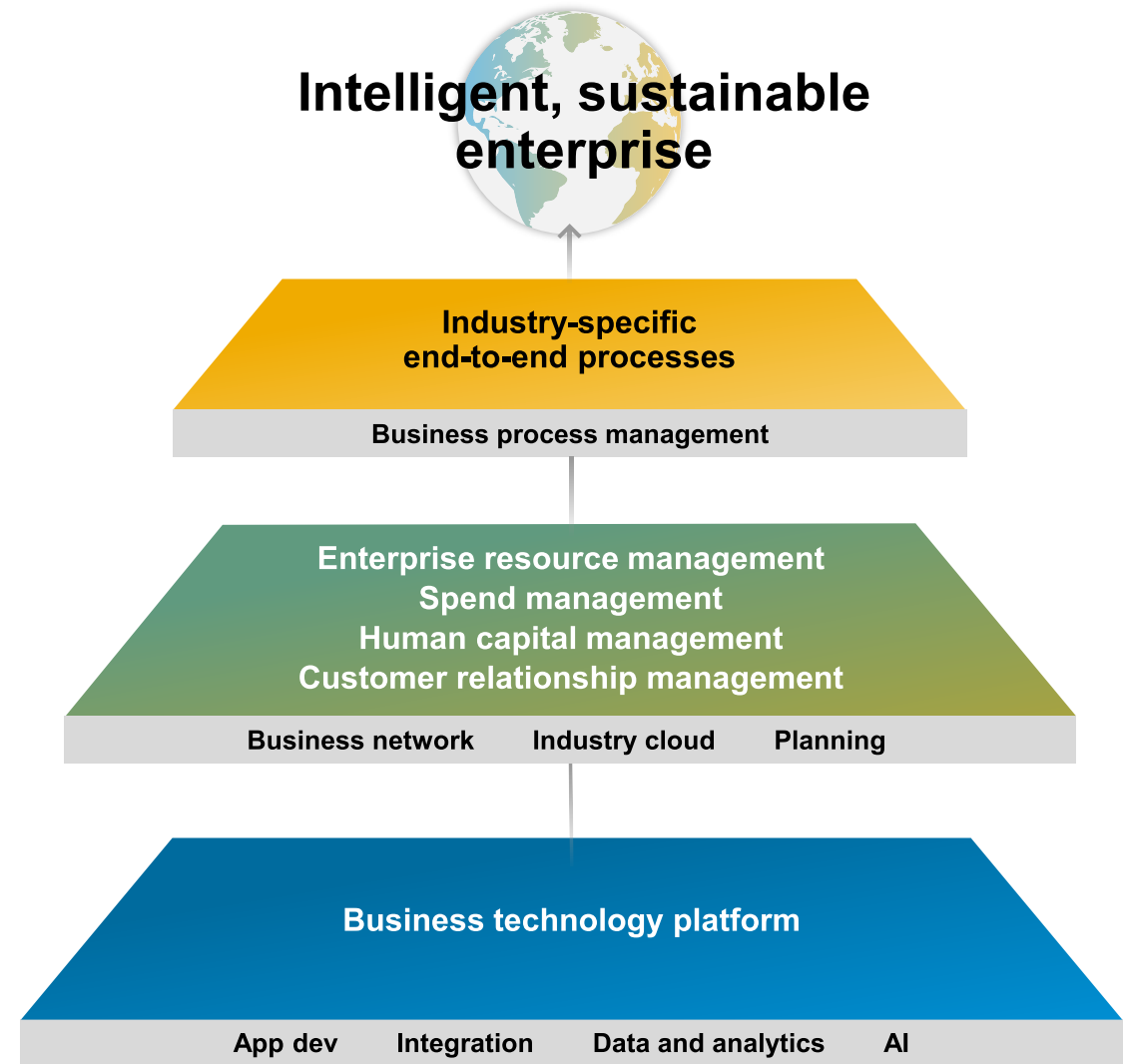
This presentation, or any related document and SAP's strategy and possible future developments, products and or platforms directions and functionality are all subject to change and may be changed by SAP at any time for any reason without notice. The information in this presentation is not a commitment, promise or legal obligation to deliver any material, code or functionality. This presentation is provided without a warranty of any kind, either express or implied, including but not limited to, the implied warranties of merchantability, fitness for a particular purpose, or non-infringement. This presentation is for informational purposes and may not be incorporated into a contract. SAP assumes no responsibility for errors or omissions in this presentation, except if such damages were caused by SAP's intentional or gross negligence.

All forward-looking statements are subject to various risks and uncertainties that could cause actual results to differ materially from expectations. Readers are cautioned not to place undue reliance on these forward-looking statements, which speak only as of their dates, and they should not be relied upon in making purchasing decisions.



# Our Strategy

Enable every enterprise  
to become an **intelligent,  
sustainable enterprise**

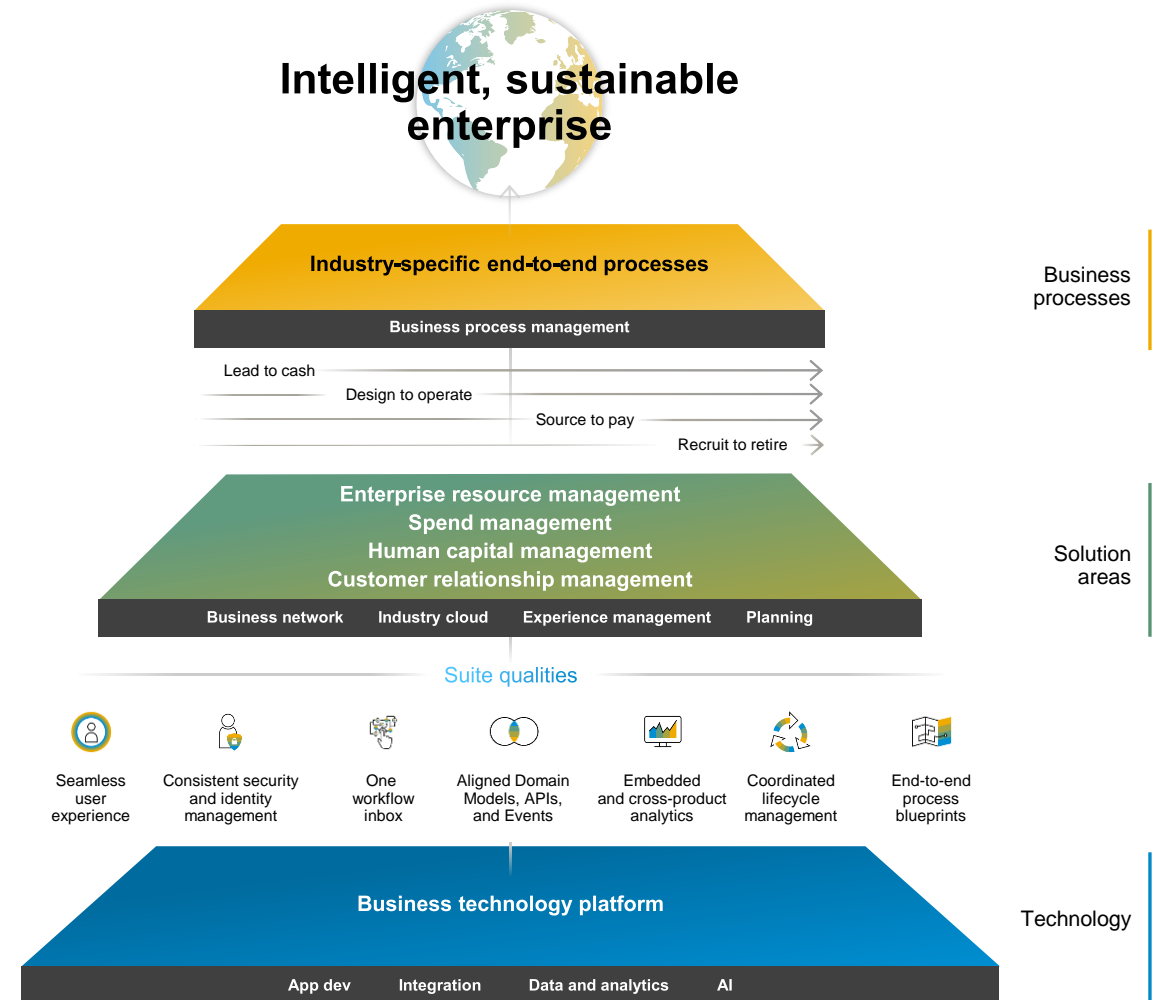


# SAP's Integration Plan in the Cloud – Deep Dive Integration Strategy

SAP provides the advanced technologies and services to ensure integrated end-to-end business processes across SAP, partner, and third-party applications

The **business technology platform** provides the critical integration capabilities to ensure connected end-to-end business processes across SAP and third-party applications

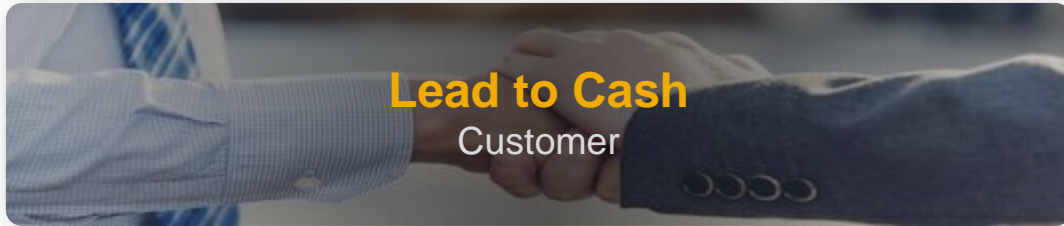
Out of the box '**suite qualities**' facilitate a consistent experience across applications with unified security, workflow, data semantics, user interface, lifecycle management, and process architectures.





# End-to-End Business Processes

# Integrated End-to-End **Core Business Processes**



Cover the entire business process from initial contact with a prospective customer, to order fulfillment and service delivery, driving revenue opportunity and optimizing the experience along the entire customer journey.



Encompass the entire lifecycle ranging from design to planning, manufacturing, delivery, and finally operations. Leverage the interoperable and modular framework of SAP Digital Supply Chain solutions to run a resilient and sustainable supply chain.



Optimize, simplify, and effectively manage all spend processes and spend categories to drive business outcomes – facilitating the transition from digital to autonomous procurement with lower TCO and leveraging the collective intelligence and network effect of the marketplace.

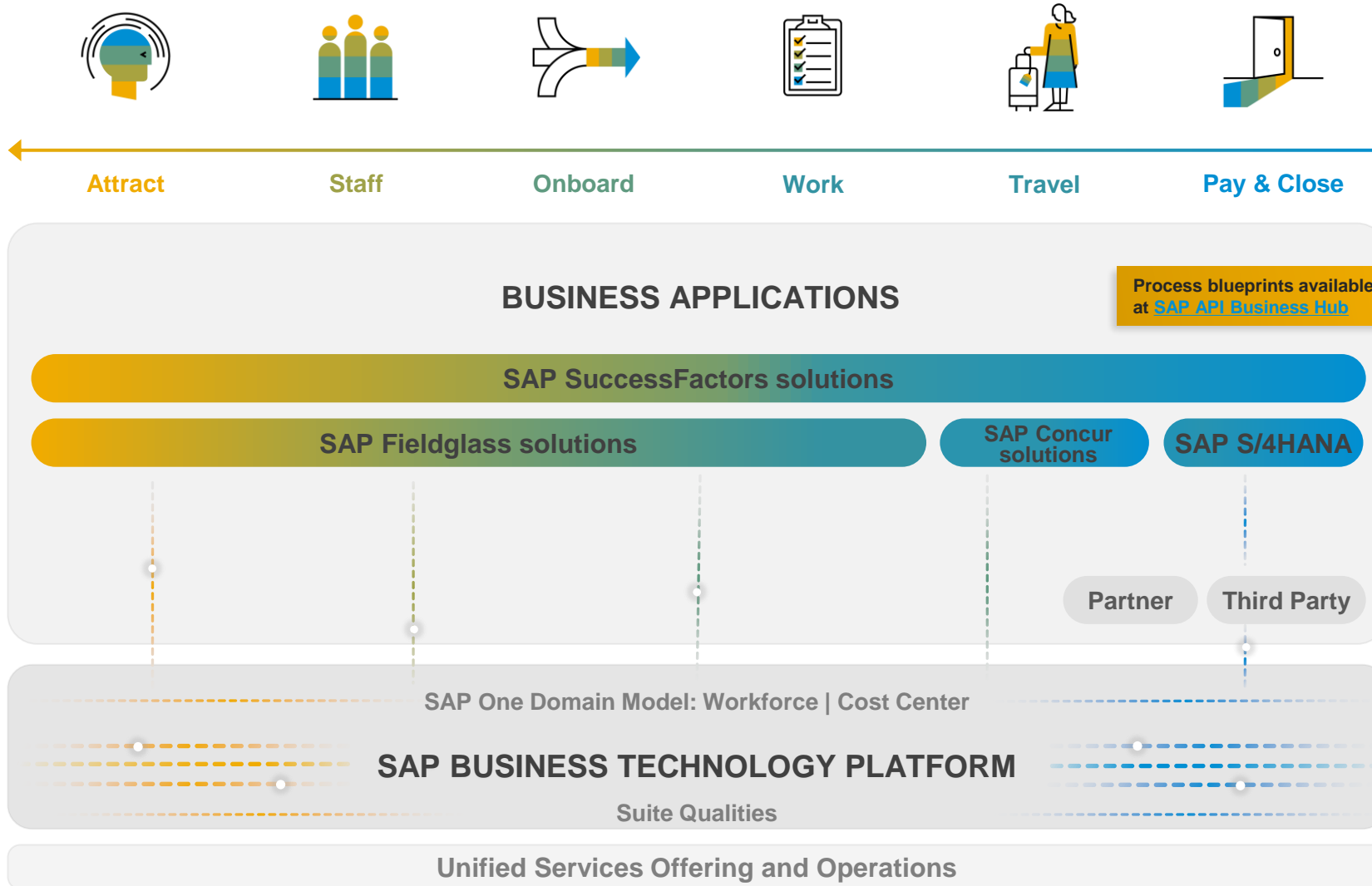


Understand, manage, and optimize all aspects of workforce (employees and external workers) in line with business objectives, and with clear financial impact – facilitating exceptional workforce experience and business transformation.

A woman with long dark hair, wearing a black beret and a black coat, is walking on a city street. She is holding a red coffee cup with a white lid in her right hand and a smartphone in her left hand. She is also carrying a blue shopping bag with white polka dots. The background is a blurred city street with buildings and other people.

How can I **attract and retain** the best employees and external workers?

# Integrated **Recruit to Retire** Process



## 30% Reduction

in recruitment time – [FRoSTA AG](#)

## 90% Increase

in operational excellence, with a significant reduction of administrative tasks – [Power International Holding](#)

- ✓ Build and operate a transparent organization
- ✓ Reduce time to hire
- ✓ Ensure compliance with legal regulations
- ✓ Ensure a secure and viable workforce
- ✓ Transforming travel and expense management with SAP Concur
- ✓ Make talent decisions proactively



# Suite Qualities

# Suite Qualities – Consistent Experience Along End-to-End Key Processes

*Implemented across end-to-end business processes delivered by the SAP Business Technology Platform to unify user experience, security, workflow inboxes, data semantics, analytics, lifecycle management, and process architectures.*



## Seamless User Experience

Improve the daily work experience of end users with a common look for all SAP solutions across the intelligent enterprise.

Enabled by: [SAP Fiori](#), [SAP Launchpad service](#) on SAP BTP



## Consistent Security & Identity Mgmt.

Reduce manual administration efforts for user management and identity provisioning and enable a seamless login process to avoid work disruption.

Enabled by: [SAP Cloud Identity Services](#) on SAP BTP



## Aligned Domain Models, APIs & Events

Simplify the exchange of business objects and improve data consistency by using one semantically aligned domain model across all end-to-end business processes.

Enabled by: [SAP One Domain Model](#), [SAP Master Data Integration service](#) on SAP BTP



## Embedded Analytics Across Solutions

Make quick and confident decisions by relying on comprehensive analytical insights, based on secure live access to your business data.

Enabled by: [SAP Analytics Cloud](#)



## One Workflow Inbox

Complete business tasks proactively through a unified view of pending tasks across SAP solutions in both mobile and desktop environments.

Enabled by: [SAP Task Center](#) on SAP BTP and [SAP Mobile Start](#)



## End-to-End Process Blueprints

Reduce planning effort for implementation projects and support architecture decisions by leveraging process blueprints following the industry reference architecture standard.

Enabled by: [SAP API Business Hub](#)

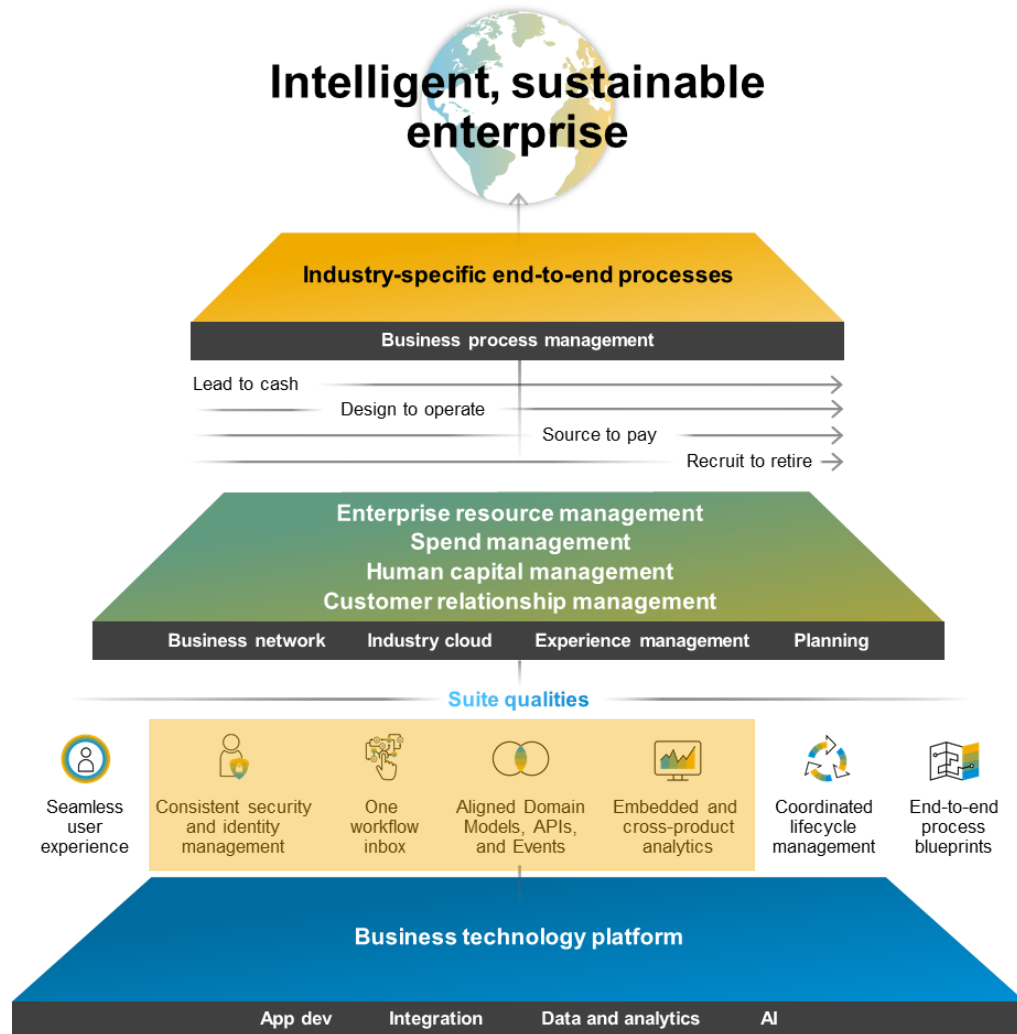


## Coordinated Lifecycle Mgmt.

Accelerate implementation projects and reduce manual integration configuration effort with harmonized provisioning, setup and operations, and monitoring solutions.

Enabled by: [SAP for Me](#), [SAP CALM](#)

# Fundamental BTP Services for the **Integrated Intelligent Enterprise**



- Identity Authentication Service
- SAP Cloud Integration
- Embedded SAP Analytics Cloud
- SAP Master Data Integration
- SAP Task Center Service
- SAP Workflow Management

**Adoption of combined BTP Services** indicates customer journey towards **Intelligent Enterprise scenarios**

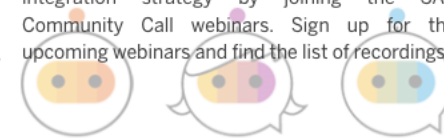
## SAP Integration Strategy

Welcome to the community home about the SAP Integration Strategy in the context of the intelligent enterprise. Discover SAP's holistic integration approach, which covers both technology and business processes delivering a significant value to your business. Learn all about suite qualities which facilitate a seamless out-of-the-box integration of SAP's intelligent suite along defined end-to-end business processes.

[✓ Following](#)[Ask a Question](#)[Write a Blog Post](#)[Topic Resources](#)[Community Content](#)

### Webinar Calendar

Deeply dive into the building blocks of SAP's integration strategy by joining the SAP Community Call webinars. Sign up for the upcoming webinars and find the list of recordings



## Featured Content



### New Blog Post Series around SAP Event Mesh cloud service available for you

To help other developers/customers get an understanding of various concepts involved in SAP Event Mesh service, we are starting with a series comprising of multiple technical how-to-guides.

With this overview [blog post](#) by [Ayush Kumar](#) and [Vipul Khullar](#) you get a perfect start into the topic.

The first 2 deep dive blogs are already available for you:



### SAP Integration Experience - Provide feedback on the functional and architectural aspects of intelligent enterprise scenarios

SAP Integration Experience Feedback provides you the opportunity to experience intelligent enterprise scenarios and suite qualities on an integrated SAP landscape.

[Entire project list](#)

Featured Projects (as of June 13th)



### SAP Community Calls for the Intelligent Enterprise

Deeply dive into the building blocks of SAP's integration strategy by joining the SAP Community Calls.

[Check in to our SAP Community Youtube Channel for the upcoming webinars:](#)

Quickly access our last SAP Community Call:

- [Explore the new Integration Assessment Capability within](#)

### Search community content



### Must reads / visits

[Intelligent Enterprises Are Integrated Enterprises \(whitepaper\)](#)

[SAP Discovery Center - Implement your use cases on SAP Business Technology Platform](#)

### End-to-End Business Processes

[Business Process Reference Architectures in the SAP API Business Hub](#)

[Recruit to Retire - Configuration](#)

[Lead to Cash - Configuration](#)

[Source to Pay - Configuration](#)

[Design to Operate - Overview](#)

[Core Technologies & Best Practices](#)

# SAP COMMUNITY CALLS

## Delivering on the Promise of the Intelligent, Sustainable Enterprise – Powered by SAP Business Technology Platform

July 13, 2022 | 08:00 AM (EST) / 02:00 PM (CET)



**Steffen Pietsch**

Vice President, Head of  
SAP BTP Product  
Management, SAP SE



**Phil Loewen**

Global Head of Cross Product  
Strategy & Product  
Management, SAP SE


THE BEST RUN







Recap

## Key Resource


Community

Topics
Groups
Answers
Blogs
Events
Programs
Resources
What's New

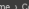



Home
Community
Topics

Ask a Question
Write a Blog Post
...

## SAP Integration Strategy

Welcome to the community home about the SAP Integration Strategy in the context of the intelligent enterprise. Discover SAP's holistic integration approach, which covers both technology and business processes delivering a significant value to your business. Learn all about suite qualities which facilitate a seamless out-of-the-box integration of SAP's intelligent suite along defined end-to-end business processes.


Following

Ask a Question


Write a Blog Post

Topic Resources

Community Content

### Webinar Calendar

Deeply dive into the building blocks of SAP's integration strategy by joining the SAP Community Call webinars. Sign up for the upcoming webinars and find the list of recordings



## Featured Content

New Blog Post Series around  
SAP Event Mesh cloud  
service available for you

To help other developers/customers get an understanding of various concepts involved in SAP Event Mesh service, we are starting with a series comprising of multiple technical how-to-guides.

With this overview [blog post](#) by [Ayush Kumar](#) and [Vipul Khullar](#) you get a perfect start into the topic.

The first 2 deep dive blogs are already available for you:



**SAP Integration Experience -**  
Provide feedback on the  
functional and architectural  
aspects of intelligent  
enterprise scenarios

SAP Integration Experience Feedback provides you the opportunity to experience intelligent enterprise scenarios and suite qualities on an integrated SAP landscape.

[Entire project list](#)

### Featured Projects (as of June 13th)

## SAP Community Calls for the Intelligent Enterprise

Deeply dive into the building blocks of SAP's integration strategy by joining the SAP Community Calls.

Check in to our SAP Community Youtube Channel for the upcoming webinars:

Quickly access our last SAP  
Community Call:

- Explore the new Integration Assessment Capability within

Search community content

Search 

Must reads / visits

Intelligent Enterprises Are Integrated Enterprises (whitepaper)

SAP Discovery Center - Implement your use cases on SAP Business Technology Platform

### End-to-End Business Processes

## Business Process Reference Architectures in the SAP API Business Hub

Recruit to Retire - Configuration

## Lead to Cash - Configuration

Source to Pay - Configuration

## Design to Operate - Overview

## Core Technologies & Best Practices

<https://community.sap.com/topics/integration-strategy>



# Thank you.

Contact Information

Carsten Puschke

[carsten.puschke@sap.com](mailto:carsten.puschke@sap.com)



THE BEST RUN 

Follow us



[www.sap.com/contactsap](https://www.sap.com/contactsap)

© 2022 SAP SE or an SAP affiliate company. All rights reserved.

No part of this publication may be reproduced or transmitted in any form or for any purpose without the express permission of SAP SE or an SAP affiliate company.

The information contained herein may be changed without prior notice. Some software products marketed by SAP SE and its distributors contain proprietary software components of other software vendors. National product specifications may vary.

These materials are provided by SAP SE or an SAP affiliate company for informational purposes only, without representation or warranty of any kind, and SAP or its affiliated companies shall not be liable for errors or omissions with respect to the materials. The only warranties for SAP or SAP affiliate company products and services are those that are set forth in the express warranty statements accompanying such products and services, if any. Nothing herein should be construed as constituting an additional warranty.

In particular, SAP SE or its affiliated companies have no obligation to pursue any course of business outlined in this document or any related presentation, or to develop or release any functionality mentioned therein. This document, or any related presentation, and SAP SE's or its affiliated companies' strategy and possible future developments, products, and/or platforms, directions, and functionality are all subject to change and may be changed by SAP SE or its affiliated companies at any time for any reason without notice. The information in this document is not a commitment, promise, or legal obligation to deliver any material, code, or functionality. All forward-looking statements are subject to various risks and uncertainties that could cause actual results to differ materially from expectations. Readers are cautioned not to place undue reliance on these forward-looking statements, and they should not be relied upon in making purchasing decisions.

SAP and other SAP products and services mentioned herein as well as their respective logos are trademarks or registered trademarks of SAP SE (or an SAP affiliate company) in Germany and other countries. All other product and service names mentioned are the trademarks of their respective companies.

See [www.sap.com/copyright](https://www.sap.com/copyright) for additional trademark information and notices.