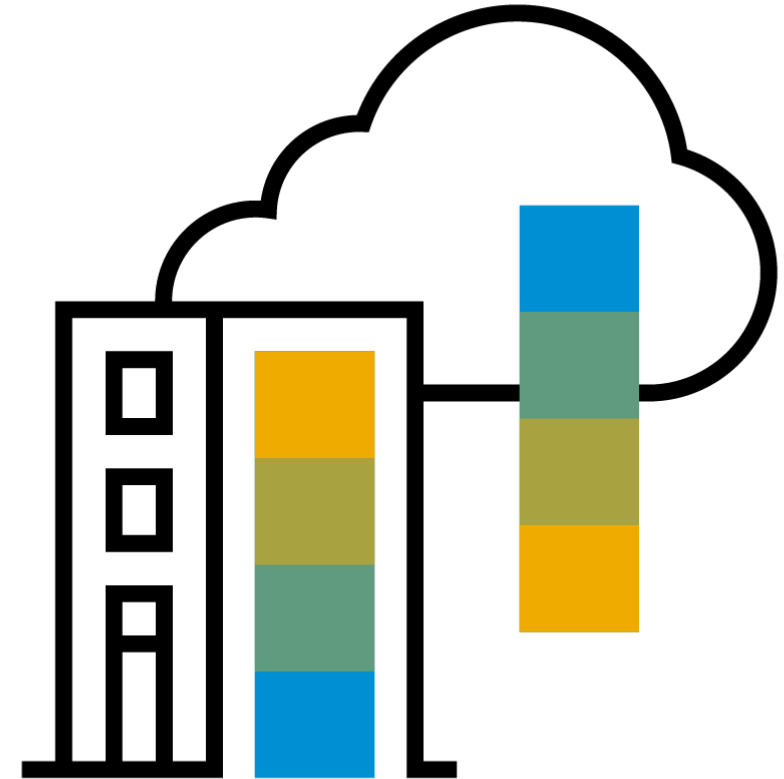


Software Update Manager Overview and Scenarios

Dr. Boris Rubarth, SAP SE
Learning Session for SAP User Groups
September 2022

Public



Disclaimer

The information in this presentation is confidential and proprietary to SAP and may not be disclosed without the permission of SAP. Except for your obligation to protect confidential information, this presentation is not subject to your license agreement or any other service or subscription agreement with SAP. SAP has no obligation to pursue any course of business outlined in this presentation or any related document, or to develop or release any functionality mentioned therein.

This presentation, or any related document and SAP's strategy and possible future developments, products and or platforms directions and functionality are all subject to change and may be changed by SAP at any time for any reason without notice. The information in this presentation is not a commitment, promise or legal obligation to deliver any material, code or functionality. This presentation is provided without a warranty of any kind, either express or implied, including but not limited to, the implied warranties of merchantability, fitness for a particular purpose, or non-infringement. This presentation is for informational purposes and may not be incorporated into a contract. SAP assumes no responsibility for errors or omissions in this presentation, except if such damages were caused by SAP's intentional or gross negligence.

All forward-looking statements are subject to various risks and uncertainties that could cause actual results to differ materially from expectations. Readers are cautioned not to place undue reliance on these forward-looking statements, which speak only as of their dates, and they should not be relied upon in making purchasing decisions.

Agenda Software Update Manager (SUM)

What is SUM used for?

- Which kind of systems? What kind of activities?

How do I use SUM?

- How do I get it, how do I start it, what to configure?

What else to consider about SUM?

- Further topics and information sources

What is SUM used for?

Software maintenance & Software Update Manager

Software Update Manager (SUM)

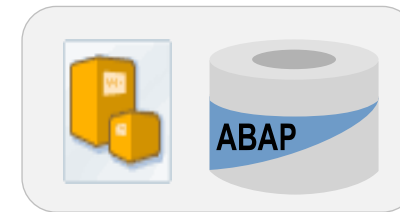
- ✓ is *the* tool for system maintenance
- ✓ reduces effort, update process runtime, and system downtime
- ✓ is constantly improved and enhanced

What is SUM used for?

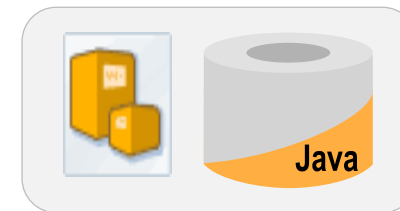
SUM is the tool: **system types**

System maintenance for all systems based on ABAP and/or Java:

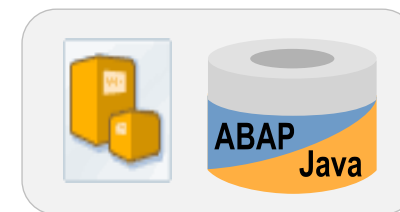
➤ Application Server ABAP



➤ Application Server Java



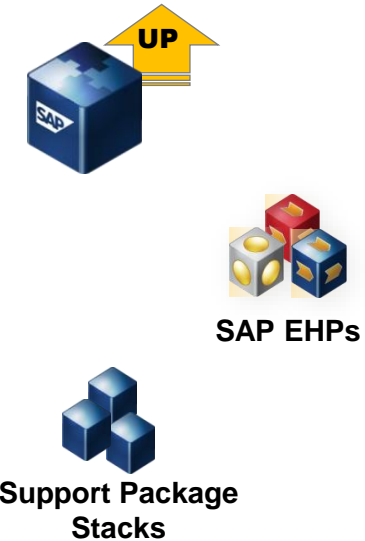
➤ Dual-stack system
(AS ABAP & AS JAVA, same System-ID)



What is SUM used for?

SUM is the tool: **system maintenance scenarios**

- **Maintenance:** System Upgrade, Update, SPs, Java Patches
- **Migration of database:** Database Migration Option (DMO)
- **System Conversion** to SAP S/4HANA
- **Customer Transport** Integration



What is SUM used for?

SUM is the tool: **system maintenance tools and features**

- **DOO**: Deployment Optimization Option (AS Java: 7.1 -> 7.3+)
Un-deploy unnecessary Java components during upgrade, e.g. ADS
- **CISI**: Correction of Installed Software Information
Adapting Software Information in system, based on a correction in Maintenance Planner
- **Benchmarking Tool**: Check the migration rate for DMO
Run only migration part of DMO on parts of source database to check migration rate
- **Prerequisite Check Extended**: check source system prior to a System Conversion
Check for major blockers and list them
- **Table Comparison**: Compare table content during heterogenous System Copy (SWPM)
Check table content of source and target database

What is SUM used for?

Compare SNOTE, TCI, SPAM/SAINT, SUM

For an ABAP system, you can

- Use Transaction **SNOTE** to apply SAP Notes
- Apply Transport-based Correction Instructions (**TCI**)
- Use transaction **SPAM/SAINT** to apply SPs, SP stacks
- Use **SUM** to apply SPs, SP stacks (and much more)

See SAP Note [1803986](#) for a comparison of SUM versus SPAM/SAINT

Agenda Software Update Manager (SUM)

What is SUM used for?

- Which kind of systems? What kind of activities?

How do I use SUM?

- How do I get it, how do I start it, what to configure?

What else to consider about SUM?

- Further topics and information sources

How do I use SUM?

Availability

The Software Update Manager is available since 2011

- as part of the “Software Logistics Toolset 1.0”
- in the download list of the Maintenance Planner
- frequently updated (approx. 3 times a year)
- **Available since 05/2022** (as part of SL Toolset 1.0 SPS 35):
 - SUM 1.1 SP 00
 - SUM 2.0 SP 14
- SAP Support Portal page on SUM explains the SUM versions, see <https://support.sap.com/en/tools/software-logistics-tools/software-update-manager.html>

SAP Service Marketplace

support.sap.com/sltoolset

SAP Note on SL Toolset

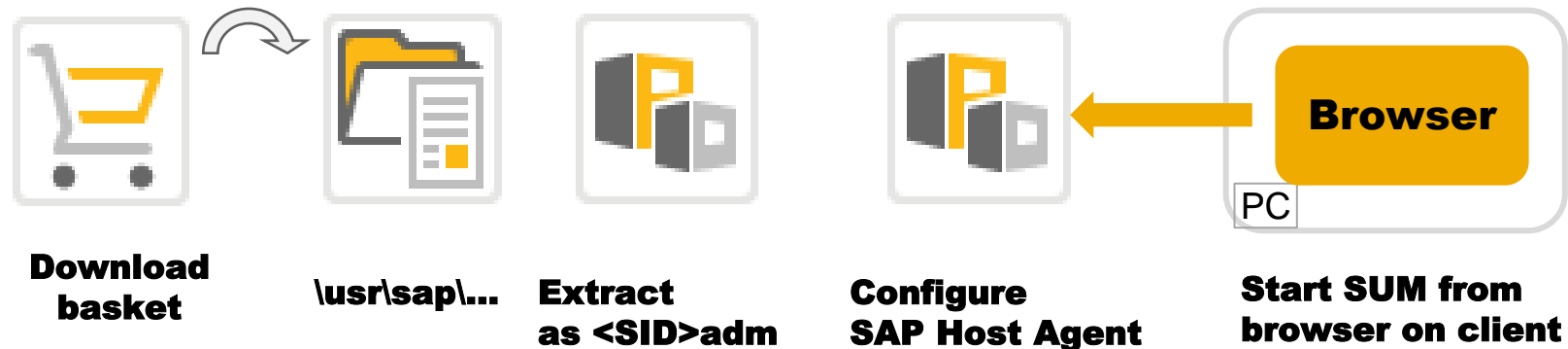
[SAP Note 1563579](https://support.sap.com/notes/1563579)

How do I use SUM?

Starting the Software Update Manager on host

The Software Update Manager

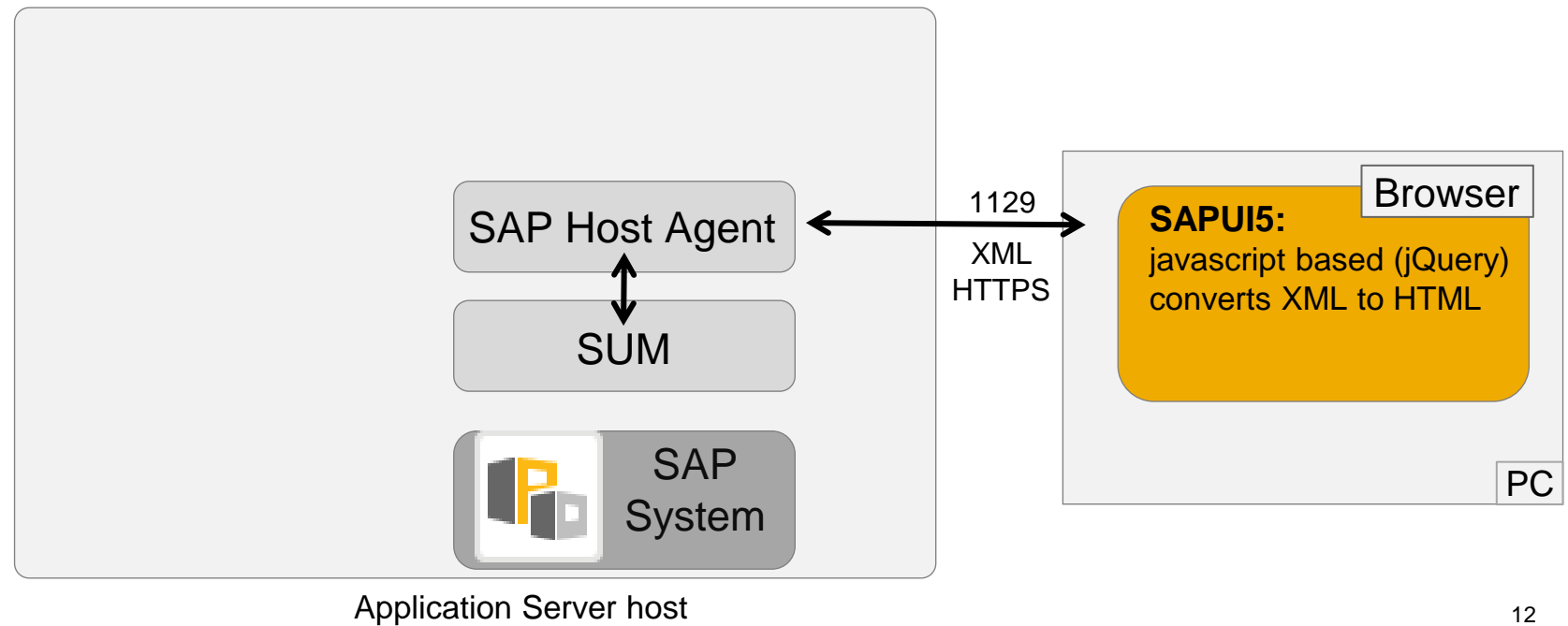
- is delivered as an archive
- is to be extracted on the *Primary Application Server* host (PAS, formerly known as Central Instance CI)
- can be extracted on an *Additional Application Server* host (AAS; for conditions, see respective SUM release SAP Note)



How do I use SUM?

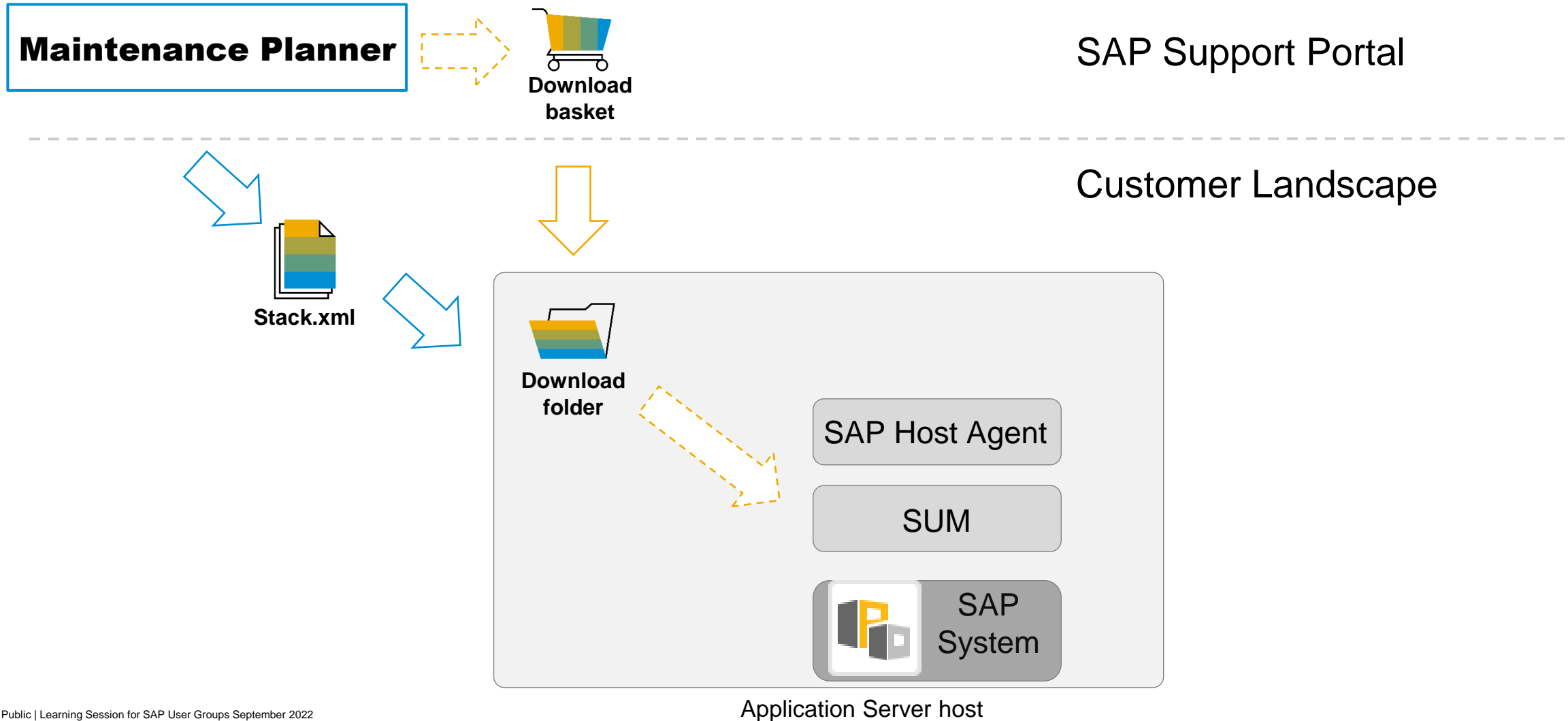
Communication between UI and SUM

Customer Landscape



How do I use SUM?

Download archives to Application Server Host

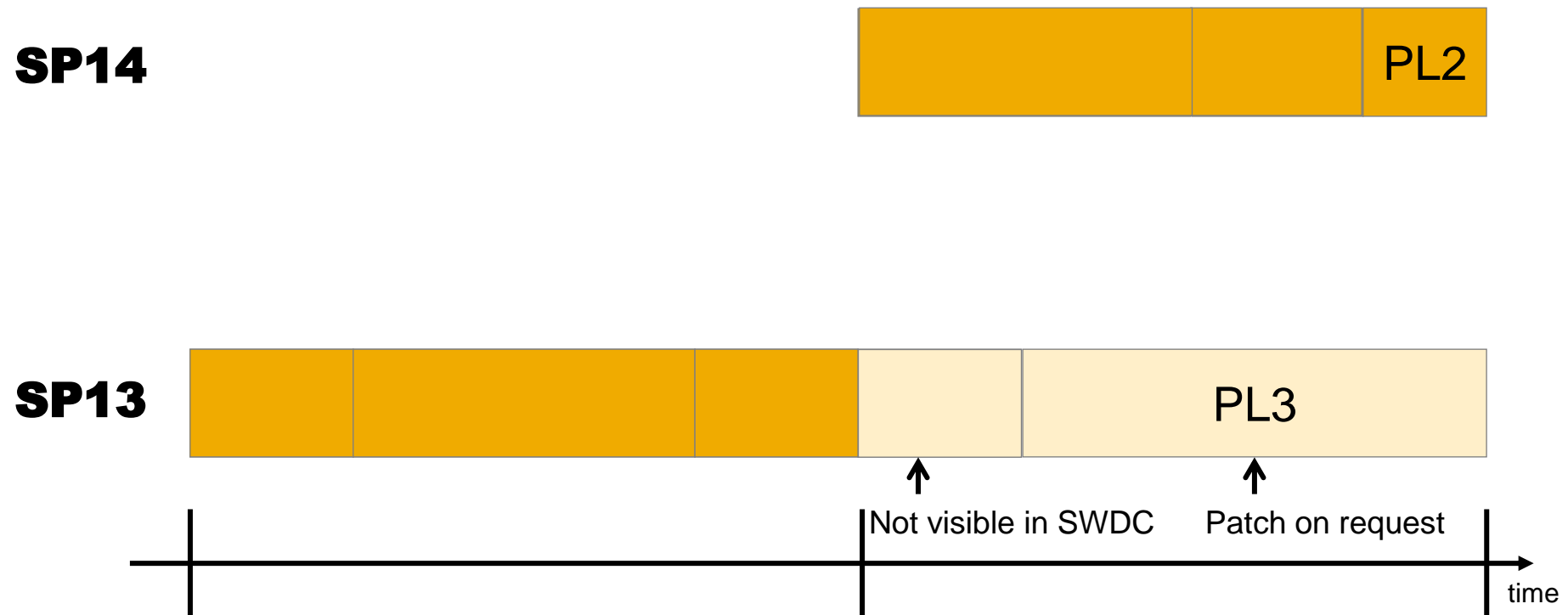


How do I use SUM?

SUM SP Versions and Patches – Example: SUM 2.0

You do not *have* to use the latest SUM SP-Version

but our recommendation is to use the latest Patch-Level (PL) of a SUM SP-Version



How do I use SUM?

SUM 2.0 User Interface (UI)

SAP DMS Software Update Manager 2.0 SP14 (PL0) 205.4 GB FREE Tasklist Logs Breakpoints Help

Get Roadmap

0% - Process is in a dialog

Current Phase: MOD_SELROADMAP/SELECT_ROADMAP
Started at: 2022-02-17 11:17:49

Welcome to the Software Update Manager

[SAP Note 3112322](#) and all further SAP Notes mentioned in it, such as the database-specific SAP Notes, contain important information about the Software Update Manager. Read the current version before you start the preparatory activities and check the SAP Note again for changes before you start the procedure.

Specify the Scenario Category

Scenario using Stack Configuration File i

Enter a valid name and path to the stack configuration file:

*Stack file

No Stack Configuration File required for scenario i

Back Next

Agenda Software Update Manager (SUM)

What is SUM used for?

- Which kind of systems? What kind of activities?

How do I use SUM?

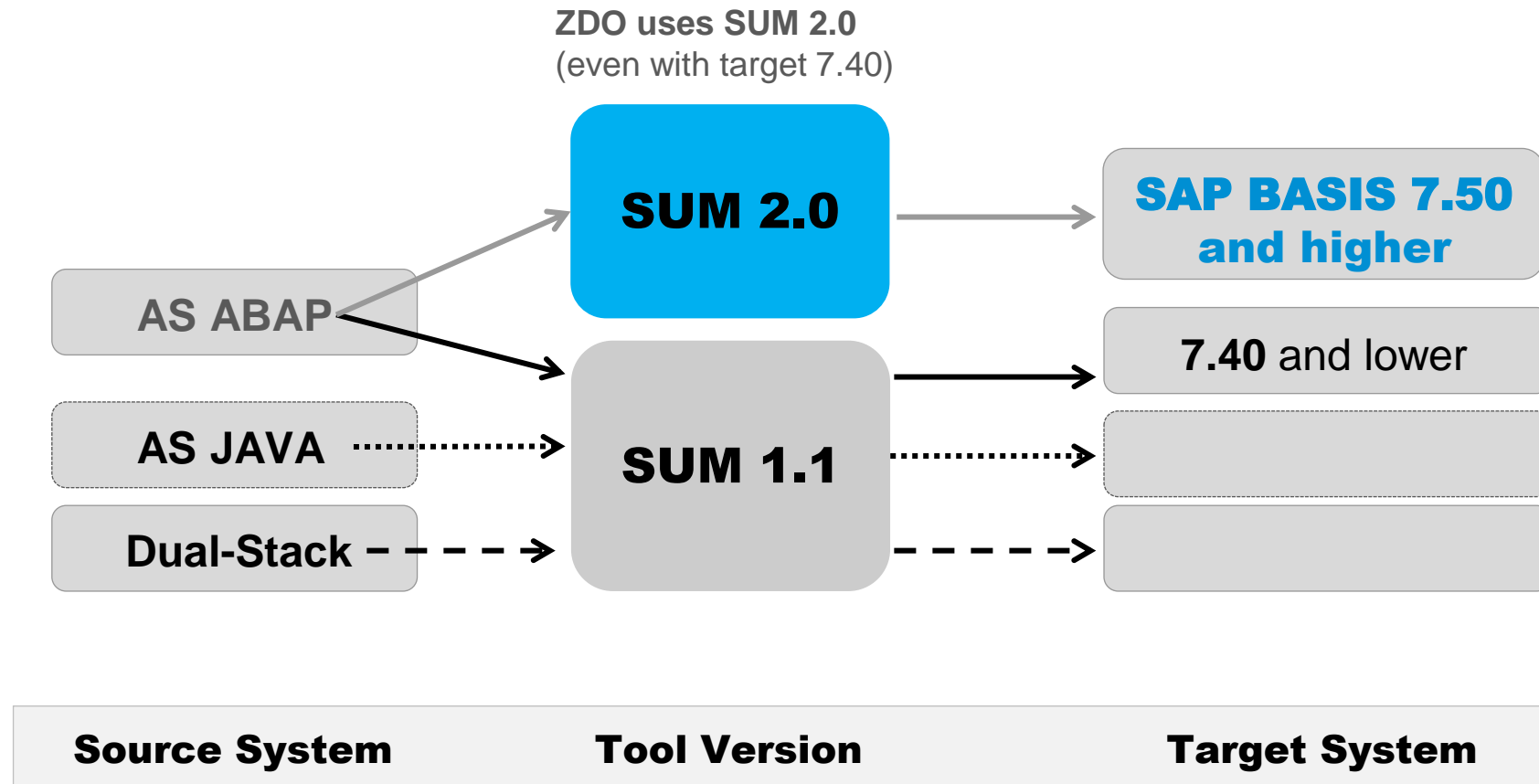
- How do I get it, how do I start it, what to configure?

What else to consider about SUM?

- Further topics and information sources

What else to consider about SUM?

The difference between SUM 1.1 and SUM 2.0



Further Information

Software Update Manager

- Central SAP Note on SUM 1.1 SP 00: [SAP Note 3108485](#)
- Central SAP Note on SUM 2.0 SP 14: [SAP Note 3112322](#)
- SAP Community Blog Post: [SUM: Introducing the Tool for Software Maintenance](#)
- SUM news with SL Toolset 1.0 SPS 35:
<https://support.sap.com/en/tools/software-logistics-tools/sltoolset-news-sps35.html>

The Software Logistics Toolset

- Central SAP Note for SL Toolset: [SAP Note 1563579](#)
- SAP Support Portal quick link: <http://support.sap.com/sltoolset>
- SAP Community Blog Post: [Delivery Channel for Software Logistics Tools – Software Logistics Toolset 1.0](#)

Thank you.

Contact information:

Boris.Rubarth@sap.com



Follow us



www.sap.com/contactsap

© 2022 SAP SE or an SAP affiliate company. All rights reserved.

No part of this publication may be reproduced or transmitted in any form or for any purpose without the express permission of SAP SE or an SAP affiliate company.

The information contained herein may be changed without prior notice. Some software products marketed by SAP SE and its distributors contain proprietary software components of other software vendors. National product specifications may vary.

These materials are provided by SAP SE or an SAP affiliate company for informational purposes only, without representation or warranty of any kind, and SAP or its affiliated companies shall not be liable for errors or omissions with respect to the materials. The only warranties for SAP or SAP affiliate company products and services are those that are set forth in the express warranty statements accompanying such products and services, if any. Nothing herein should be construed as constituting an additional warranty.

In particular, SAP SE or its affiliated companies have no obligation to pursue any course of business outlined in this document or any related presentation, or to develop or release any functionality mentioned therein. This document, or any related presentation, and SAP SE's or its affiliated companies' strategy and possible future developments, products, and/or platforms, directions, and functionality are all subject to change and may be changed by SAP SE or its affiliated companies at any time for any reason without notice. The information in this document is not a commitment, promise, or legal obligation to deliver any material, code, or functionality. All forward-looking statements are subject to various risks and uncertainties that could cause actual results to differ materially from expectations. Readers are cautioned not to place undue reliance on these forward-looking statements, and they should not be relied upon in making purchasing decisions.

SAP and other SAP products and services mentioned herein as well as their respective logos are trademarks or registered trademarks of SAP SE (or an SAP affiliate company) in Germany and other countries. All other product and service names mentioned are the trademarks of their respective companies.

See www.sap.com/copyright for additional trademark information and notices.