

# SAP Integration Suite

## Monthly Updates – November 2022

Product Management Team & Guests, SAP Integration Suite

# Disclaimer

The information in this presentation is confidential and proprietary to SAP and may not be disclosed without the permission of SAP. Except for your obligation to protect confidential information, this presentation is not subject to your license agreement or any other service or subscription agreement with SAP. SAP has no obligation to pursue any course of business outlined in this presentation or any related document, or to develop or release any functionality mentioned therein.

This presentation, or any related document and SAP's strategy and possible future developments, products and or platforms directions and functionality are all subject to change and may be changed by SAP at any time for any reason without notice. The information in this presentation is not a commitment, promise or legal obligation to deliver any material, code or functionality. This presentation is provided without a warranty of any kind, either express or implied, including but not limited to, the implied warranties of merchantability, fitness for a particular purpose, or non-infringement. This presentation is for informational purposes and may not be incorporated into a contract. SAP assumes no responsibility for errors or omissions in this presentation, except if such damages were caused by SAP's intentional or gross negligence.

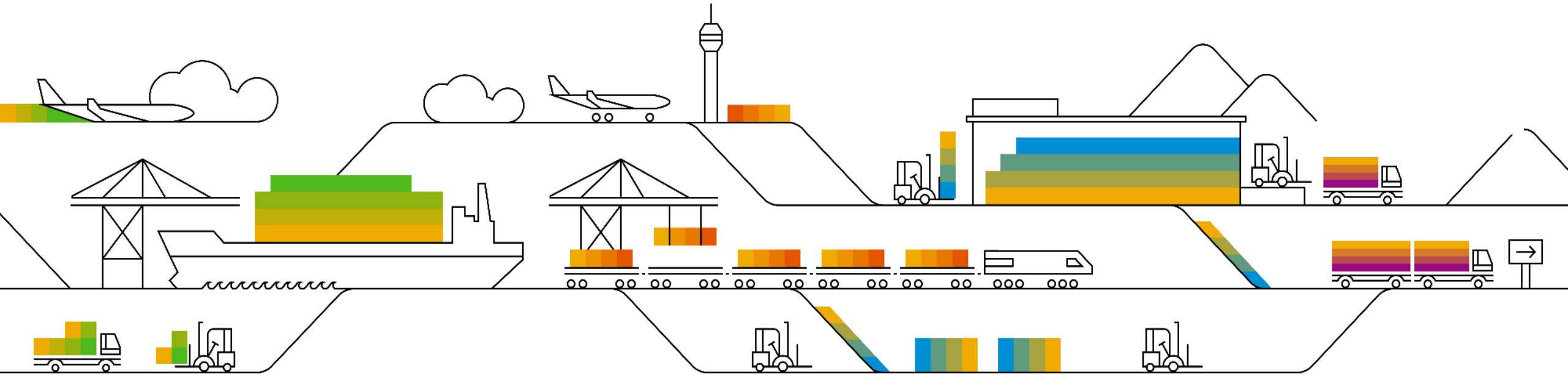
All forward-looking statements are subject to various risks and uncertainties that could cause actual results to differ materially from expectations. Readers are cautioned not to place undue reliance on these forward-looking statements, which speak only as of their dates, and they should not be relied upon in making purchasing decisions.

# Agenda

- Cloud Integration – Sunny
- New DC Mission: Synchronize Account Data Between SAP S/4HANA and Third-Party CRM - Swati



# Cloud Integration



# SOAP (SOAP 1.x) Receiver Adapter Enhancements

- You can now activate the keep-alive functionality to signal to the server that the connection should remain open even after the initial request/response sequence.
- You can now select OAuth 2.0 SAML Bearer Assertion Grant as an authentication option for SOAP (SOAP 1.x) Receiver Adapter when connecting to target system type SuccessFactors. This authentication method can only be used with **Target System Type SuccessFactors** and **User ID Key Pair Common Name (CN)**.

See: [Configure the SOAP \(SOAP 1.x\) Receiver Adapter](#)

# Dynamically assign message-mapping artifacts to message-mapping flow step

You can now dynamically assign message mapping artifacts using a header or property, or via a partner directory. This way, you can execute different message mappings from a single integration flow.

This is available from version 1.3 and onwards of the message mapping flow step.

See: [Creating Message Mapping As A Flow Step](#)

# Handle Invalid XML Characters in XML Modifier

You can now configure how to handle invalid XML characters in the XML Modifier step.

With this, you can now handle XML documents containing characters that are not valid in XML version 1.0/1.1. Depending on the XML version of the source message, the adapter checks the characters against the respective range allowed.

You can choose between the following options:

- **None:** No removal or substitution of invalid XML characters.
- **Remove:** Invalid characters are removed.
- **Substitute:** Invalid characters are substituted by #.

See: [Define XML Modifier](#)

# Improvements for OAuth2 Client Credentials Artifact

New fields are introduced to leverage shared secret between services.

The following two improvements are addressed:

1. To pass form-urlencoded content type scope is enabled.
2. There is an option now to add custom key-value pair i.e. OAuth resource and audience info.

See: [Deploying an OAuth2 Client Credentials Artifact](#)



# TLS Connectivity Tests: Option to Add Root Certificate to Keystore

During a TLS connectivity test, you can now add a root certificate directly to the keystore.

Only available if the root certificate is part of the certificate chain. If the server doesn't return the root certificate during the test call, the user needs to provide a fitting root certificate manually.

See: [TLS Connectivity Tests](#)

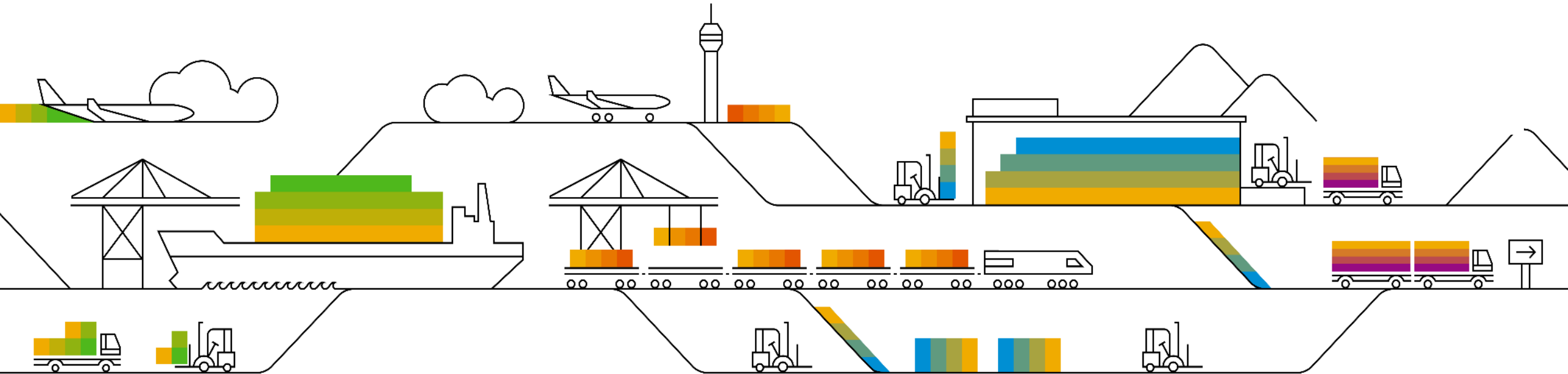
## Other Updates

- On configuring AS2 receiver channel for the **Request-Reply** integration flow element, the AS2 receiver adapter version 1.8 and above will set the exchange header **Sap\_AS2MessageID** with originalMessageID.  
See: [Configure the AS2 Receiver Adapter](#)
- Client Certificate is now available as an authentication type from version 1.10 and onwards of the OData V4 receiver adapter.  
See: [Configure the OData V4 Receiver Adapter](#)
- A new entry **ExecutedMapping** is added to the message processing log that indicates which message mapping artifact was executed.  
See: [Message Processing Log - Text View](#)
- Support for a public API to publish the status of the connection to integration flow monitoring for ADK sender integration adapters.  
See: [Enabling Connection Status for Integration Flow](#)

## Other Updates

- You can now use up to 4096 characters for your secure parameter in Cloud Foundry.  
See: [Deploying a Secure Parameter Artifact](#)
- There were issues with Content Enricher where it was enriching the content of an original message with unexpected content that wasn't defined as part of the content enrich strategy. The issue is fixed with the 1.2 version of Content Enricher.
- There's a new tutorial available on **developers.sap.com** describing how to set up inbound authentication for API clients calling the Cloud Integration OData API.  
See: [Tutorial: Set Up Inbound OAuth Client Credentials Grant Authentication for API Clients with SAP-Generated Certificate](#)

# New Discovery Center Mission

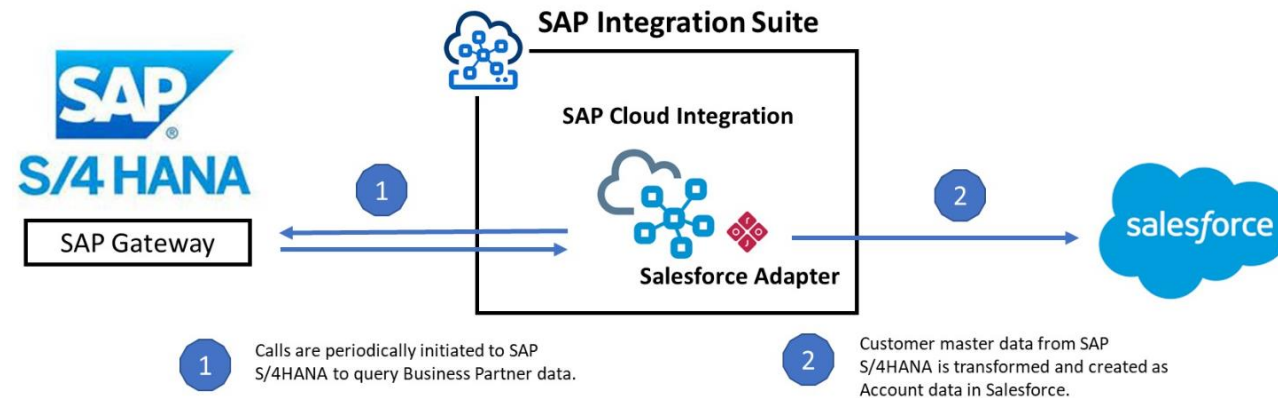


# SAP Missions with Discovery Center

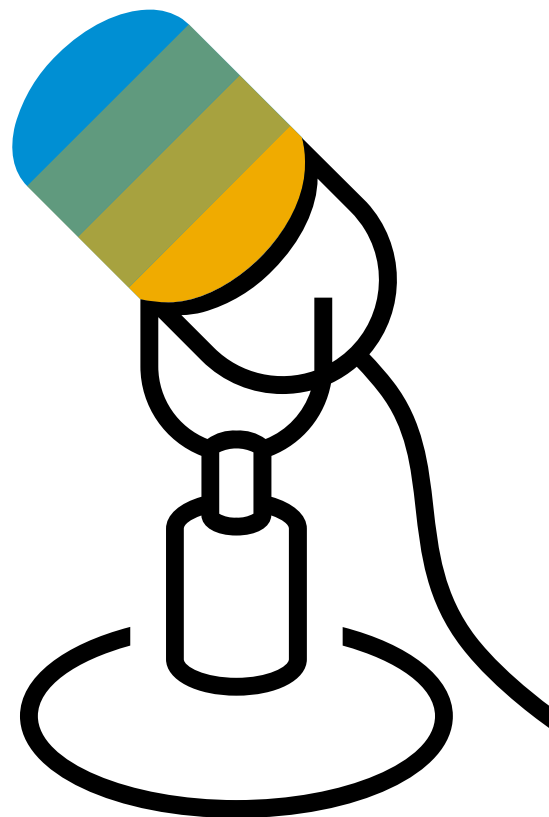
## What

## Why

Synchronize Account Data Between SAP S/4HANA and Third-Party CRM : [Link](#).



**Q & A**



**Thank you.**

Follow us



[www.sap.com/contactsap](http://www.sap.com/contactsap)

© 2022 SAP SE or an SAP affiliate company. All rights reserved.

No part of this publication may be reproduced or transmitted in any form or for any purpose without the express permission of SAP SE or an SAP affiliate company.

The information contained herein may be changed without prior notice. Some software products marketed by SAP SE and its distributors contain proprietary software components of other software vendors. National product specifications may vary.

These materials are provided by SAP SE or an SAP affiliate company for informational purposes only, without representation or warranty of any kind, and SAP or its affiliated companies shall not be liable for errors or omissions with respect to the materials. The only warranties for SAP or SAP affiliate company products and services are those that are set forth in the express warranty statements accompanying such products and services, if any. Nothing herein should be construed as constituting an additional warranty.

In particular, SAP SE or its affiliated companies have no obligation to pursue any course of business outlined in this document or any related presentation, or to develop or release any functionality mentioned therein. This document, or any related presentation, and SAP SE's or its affiliated companies' strategy and possible future developments, products, and/or platforms, directions, and functionality are all subject to change and may be changed by SAP SE or its affiliated companies at any time for any reason without notice. The information in this document is not a commitment, promise, or legal obligation to deliver any material, code, or functionality. All forward-looking statements are subject to various risks and uncertainties that could cause actual results to differ materially from expectations. Readers are cautioned not to place undue reliance on these forward-looking statements, and they should not be relied upon in making purchasing decisions.

SAP and other SAP products and services mentioned herein as well as their respective logos are trademarks or registered trademarks of SAP SE (or an SAP affiliate company) in Germany and other countries. All other product and service names mentioned are the trademarks of their respective companies.

See [www.sap.com/copyright](http://www.sap.com/copyright) for additional trademark information and notices.

