

SAP Integration Suite

Monthly Updates – May 2023

Product Management Team & Guests, SAP Integration Suite

Disclaimer

The information in this presentation is confidential and proprietary to SAP and may not be disclosed without the permission of SAP. Except for your obligation to protect confidential information, this presentation is not subject to your license agreement or any other service or subscription agreement with SAP. SAP has no obligation to pursue any course of business outlined in this presentation or any related document, or to develop or release any functionality mentioned therein.

This presentation, or any related document and SAP's strategy and possible future developments, products and or platforms directions and functionality are all subject to change and may be changed by SAP at any time for any reason without notice. The information in this presentation is not a commitment, promise or legal obligation to deliver any material, code or functionality. This presentation is provided without a warranty of any kind, either express or implied, including but not limited to, the implied warranties of merchantability, fitness for a particular purpose, or non-infringement. This presentation is for informational purposes and may not be incorporated into a contract. SAP assumes no responsibility for errors or omissions in this presentation, except if such damages were caused by SAP's intentional or gross negligence.

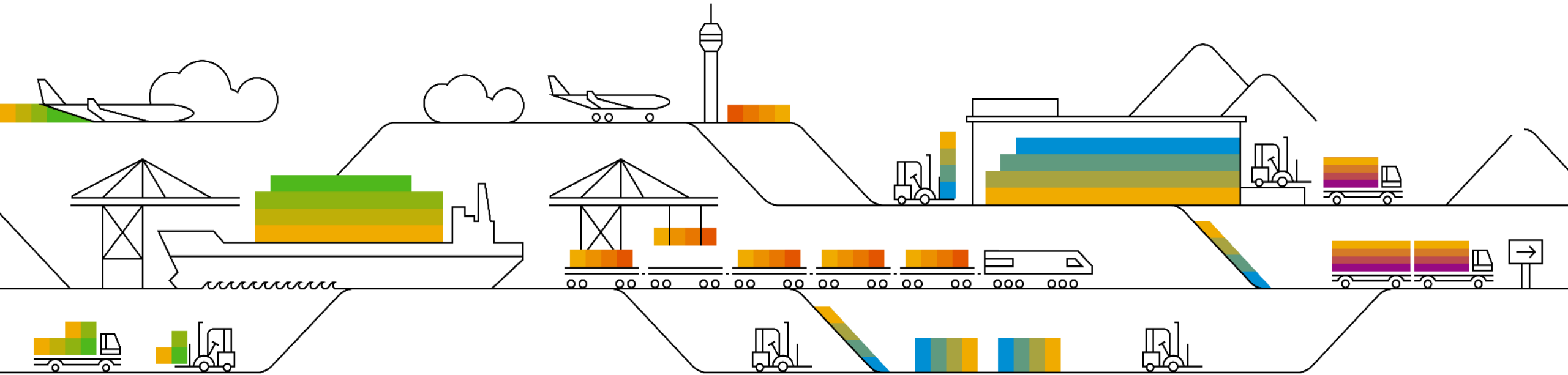
All forward-looking statements are subject to various risks and uncertainties that could cause actual results to differ materially from expectations. Readers are cautioned not to place undue reliance on these forward-looking statements, which speak only as of their dates, and they should not be relied upon in making purchasing decisions.

Agenda

- Business Accelerator hub– Aaditya (5')
- PI/PO migration – Alex (15')
- Upgrade to new version of third- party connectors – Annemarie (10')



Integration Suite



Latest migration assessment features

Migration Assessment

- New rules added
- Improved system settings

SAP Process Orchestration Systems

System Name	Description
J2E	J2E

System Overview

System Name: * J2E

Description: J2E

Integration Directory

Address: * http://po75oncalfromalex:50000

User ID: * pidemo

Password: * *****

Rules

Get an overview of the rules that define the effort estimation and learn how they're construed.

Rule	Description	Factset	Type	Version
SenderSOAPMessageProtocol	Determine which message protocol is used	SenderMessageProtocolFactSet	ValueMatchRule	>
SenderJDBCdriver	Determine which JDBC driver is used	SenderJDBCdriverFactSet	ValueMatchRule	>
SenderFileTransportProtocol	Determine if Adapter uses NFS as transport protocol	SenderFileTransportProtocolFactSet	ValueMatchRule	>
SenderFileAdvSelection	Determine whether advanced file selection mode is in use	SenderAdvancedFileSelectionFactSet	ValueMatchRule	>
SenderCustomAdapterModuleCount	Count the number of distinct custom adapter modules in sender channels	SenderCustomAdapterModuleFactSet	RangeFilterRule	>
SenderAdapterType	Determine the type of Sender Adapter	SenderAdapterTypeFactSet	ValueMatchRule	>
SenderAdapterQoS	Determine the Quality of Service required for the sender adapter	SenderAdapterQoSFactSet	ValueMatchRule	>
SenderAdapterModulePresence	Determine which adapter modules are present in the sender channel	SenderAdapterModuleFactSet	ValueMatchRule	>
ReceiverJDBCdriver	Determine which JDBC driver is used	ReceiverJDBCdriverFactSet	ValueMatchRule	>
ReceiverFileTransportProtocol	Determine if Adapter uses NFS as transport protocol	ReceiverFileTransportProtocolFactSet	ValueMatchRule	>
ReceiverCustomAdapterModuleCount	Count the number of distinct custom adapter modules in receiver channels	ReceiverCustomAdapterModuleFactSet	RangeFilterRule	>
ReceiverAdapterType	Determine the type of Receiver Adapter	ReceiverAdapterTypeFactSet	ValueMatchRule	>
ReceiverAdapterQoS	Determine the Quality of Service required for the receiver adapter	ReceiverAdapterQoSFactSet	ValueMatchRule	>
ReceiverAdapterModulePresence	Determine which Adapter Modules are present in the receiver channel	ReceiverAdapterModuleFactSet	ValueMatchRule	>
OMStepCount	Count the number of steps in the Operation Mapping	OMStepCountFactSet	RangeRule	>
OMPParametersCount	Count the numbers of parameters used in Operation Mapping	OMPParametersCountFactSet	RangeSumRule	>

Latest migration tool features

Migration Tool

- Summary page
- Further adapters supported: XI, JDBC, RFC
- Externalized parameters supported
- New and improved migration templates

✔ Success

PO artifact is migrated successfully to Integration Flow "soap_to_rest". Mapping resources from the source PO Artifact are copied.

Channel Mappings

The table below depicts the equivalent sender and receiver adapters created in the integration flow.

Direction	Component	Source Adapter Type	Target Adapter Type	Channel Name
Sender	BC_PIMAS_Sender	SOAP	SOAP	CC_SOAP_BE_Sender
Receiver	BC_PIMAS_Receiver	REST	HTTP	CC_REST_BE_Employee_Receiver

Next Steps

Check the newly created integration flow for any missing steps and configurations before deployment. For example,

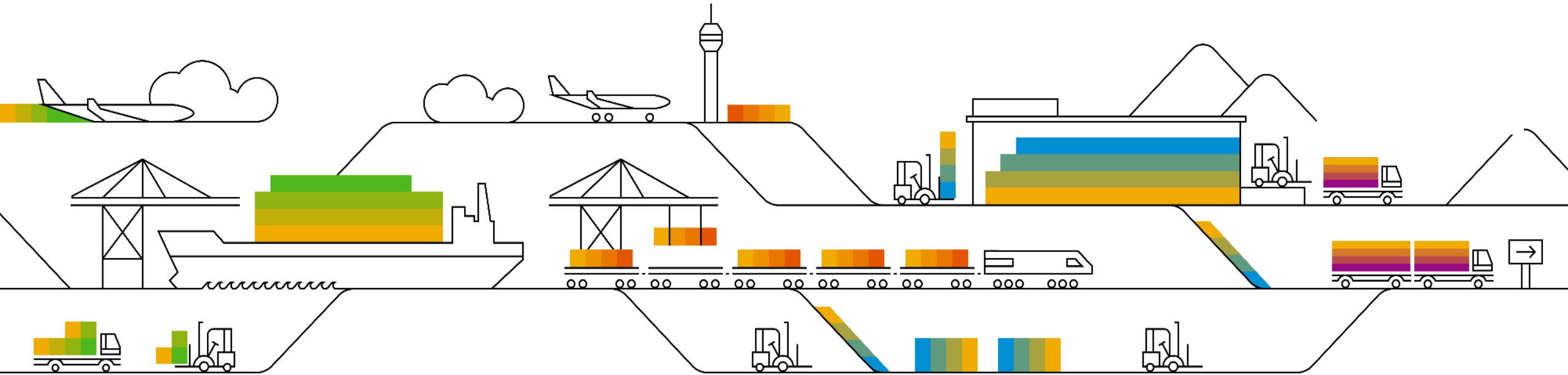
- Unsupported adapters and flow steps are not migrated and you must manually pick the right adapter. See: [Supported Components](#) and [Known Limitations](#).
- In case of connections to an on-premise system, make sure that proxy type and location ID are rightly configured.
- Check the configured security artifacts like credential name and key alias. Deploy the required security artifacts.
- Test the connectivity to your receiver system using the Test Connectivity tile in the Monitor tab.
- For RFC receiver adapters, make sure that you have configured the RFC destination in your SAP BTP cockpit. See [Creating an RFC Destination](#).
- For JDBC receiver adapters, make sure that you have added the JDBC data source. See [Managing JDBC Data Sources](#).

After checking the above mentioned steps, you can now proceed and deploy the migrated integration flow.

[View Artifact](#)

[Close](#)

Cloud Integration



Action required: Move from third party adapters to new adapter versions

As per [SAP note 3001980](#) the following adapters are deprecated since December 31st, 2020:

- Salesforce, Amazon Web Services, Microsoft Dynamics, SugarCRM

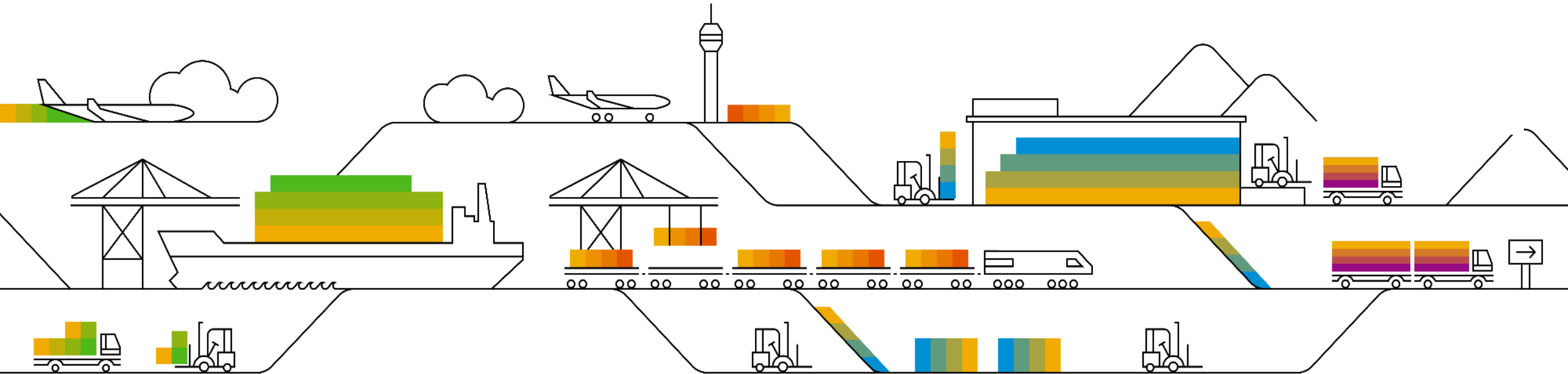
There haven't been any new features or enhancements for these adapters.

As of January 1st, 2024, adapters will no longer run.

Action required

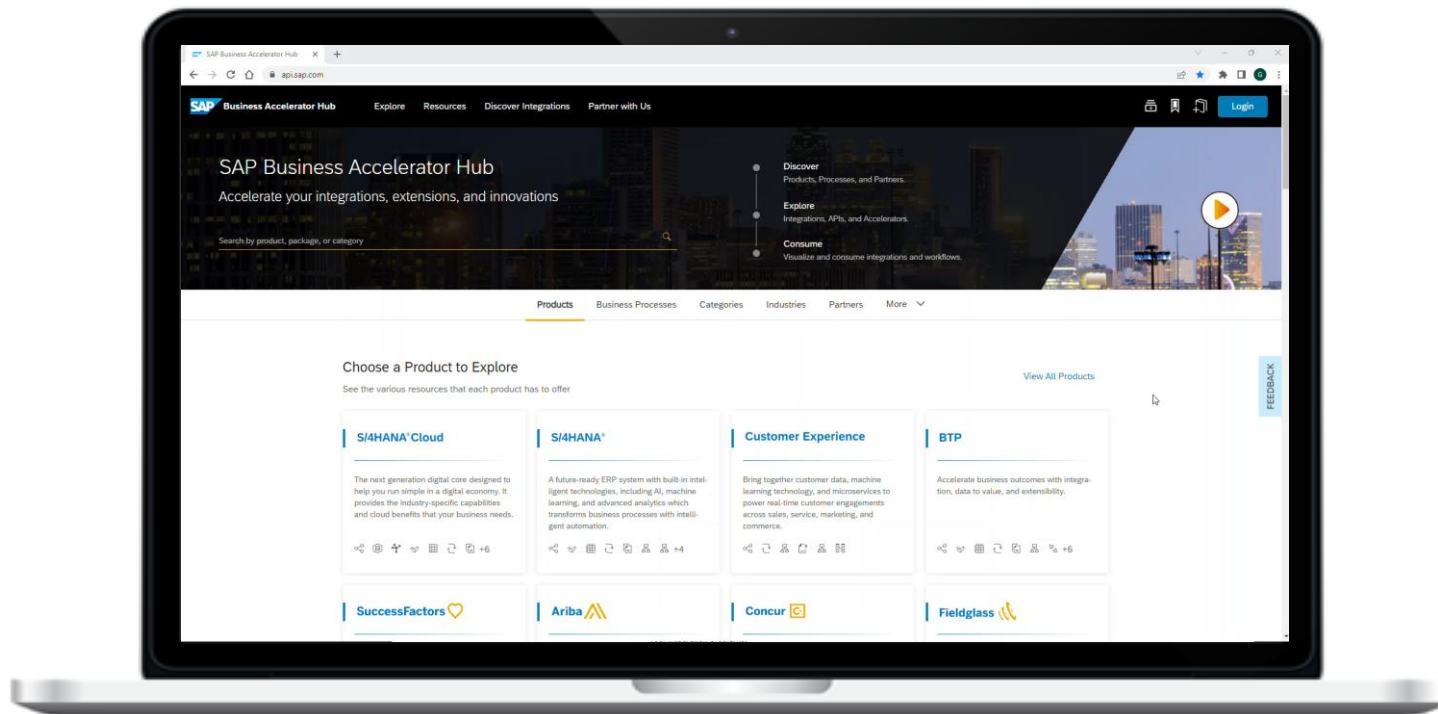
- Option 1: Migrate to updated new adapter versions and benefit from multiple new features
 - Migration support documented in [SAP Work Zone](#), e. g. [Salesforce adapter](#), [Amazon Web Services adapter](#)
 - Request access to [SAP Work Zone](#) at Annemarie Kiefer (annemarie.kiefer@sap.com)
 - SAP offers tips and tricks for migration
 - Rojo Consultancy as the adapter expert offers consultancy services. Fees apply.
 - For further question and support, open a ticket on the “LOD-HCI-PI-CON-TPRO” component, subject: “Help with upgrading to the OEM adapters”
- Option 2: Purchase new adapter versions from Advantco LLC with support from Advantco only
- For both options: Delete integration flows using the adapters that are no longer in use and undeploy adapters

Business Accelerator Hub



SAP API Business Hub is now **SAP Business Accelerator Hub**

Marketplace to accelerate the customer's journey to value

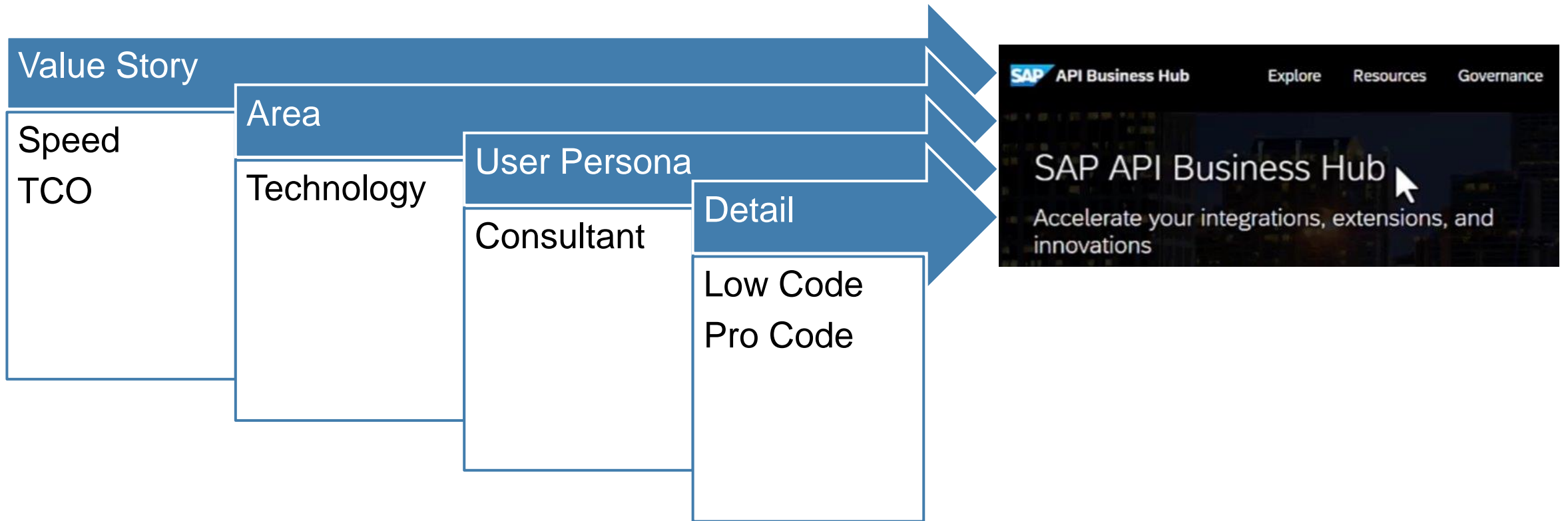


- Enable persona-focused landing pages and simplify the discovery
- Accelerate customer's journey to value with prebuilt content
- APIs continue to be supported, <https://api.sap.com> remains

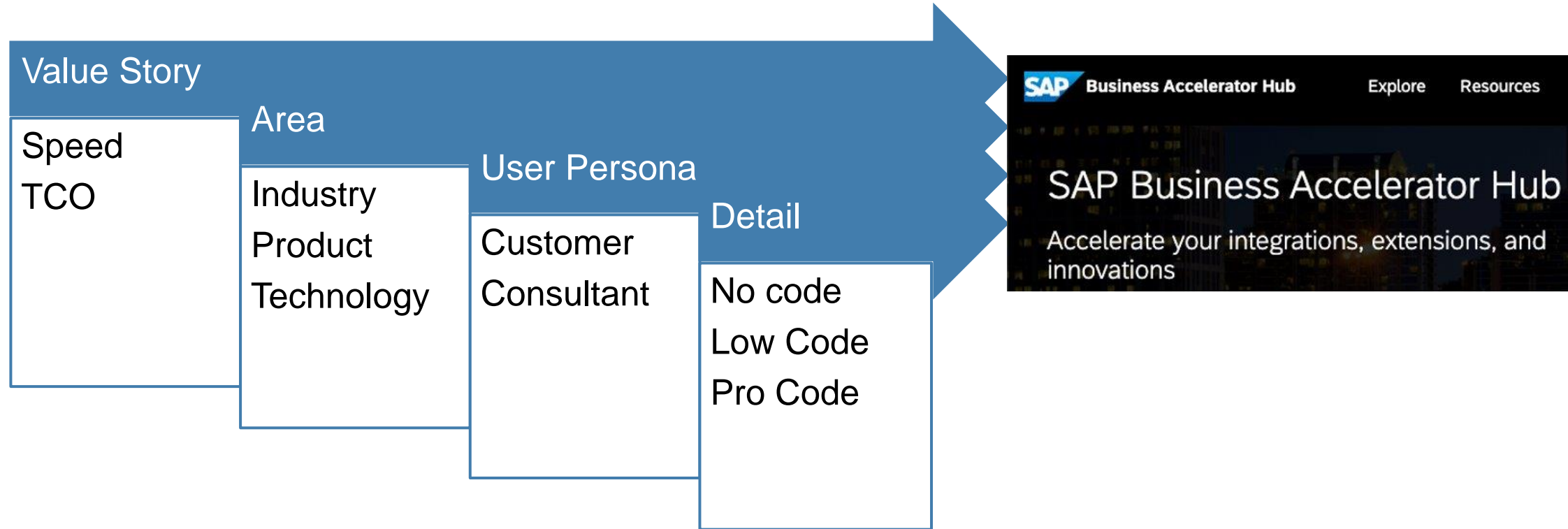
[Blog](#)

Business accelerator for discovering APIs, events, and integrations but also business processes, CDS views, and SAP Build content.

SAP API Business Hub



SAP Business Accelerator Hub



Invitation: “Integration Black Belts”

“Interact with Integration Blackbelts”

- Speakers from customers / partners / stakeholders / consultants to share their innovations, solution architecture, best practices and integration patterns
- 20 mins slot
- Interested to present? Reach out to gautham.krishna@sap.com



What is #AskAnythingIntegration?

Provides a platform for customers, partners, consultants, and participants to ask their most important and top priority questions and get them answered by the panel of experts.

- Questions can be sent upfront or posted directly in the call
- Questions and answers will then be published as a public FAQ document with regular updates and additions

Panel of Experts: Speakers of the monthly webinar + product Management team

Schedule: Runs every alternate month

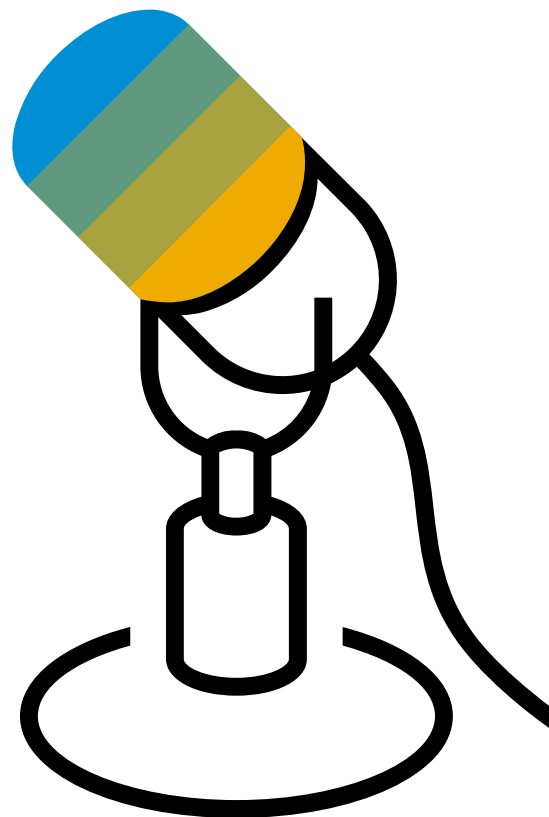
Duration: 20 mins

Moderator: Gautham (gautham.krishna@sap.com)

Note: “Interact with #IntegrationBlackBelt” section will transition to alternate months.



Q & A



Thank you.

Follow us



www.sap.com/contactsap

© 2023 SAP SE or an SAP affiliate company. All rights reserved.

No part of this publication may be reproduced or transmitted in any form or for any purpose without the express permission of SAP SE or an SAP affiliate company.

The information contained herein may be changed without prior notice. Some software products marketed by SAP SE and its distributors contain proprietary software components of other software vendors. National product specifications may vary.

These materials are provided by SAP SE or an SAP affiliate company for informational purposes only, without representation or warranty of any kind, and SAP or its affiliated companies shall not be liable for errors or omissions with respect to the materials. The only warranties for SAP or SAP affiliate company products and services are those that are set forth in the express warranty statements accompanying such products and services, if any. Nothing herein should be construed as constituting an additional warranty.

In particular, SAP SE or its affiliated companies have no obligation to pursue any course of business outlined in this document or any related presentation, or to develop or release any functionality mentioned therein. This document, or any related presentation, and SAP SE's or its affiliated companies' strategy and possible future developments, products, and/or platforms, directions, and functionality are all subject to change and may be changed by SAP SE or its affiliated companies at any time for any reason without notice. The information in this document is not a commitment, promise, or legal obligation to deliver any material, code, or functionality. All forward-looking statements are subject to various risks and uncertainties that could cause actual results to differ materially from expectations. Readers are cautioned not to place undue reliance on these forward-looking statements, and they should not be relied upon in making purchasing decisions.

SAP and other SAP products and services mentioned herein as well as their respective logos are trademarks or registered trademarks of SAP SE (or an SAP affiliate company) in Germany and other countries. All other product and service names mentioned are the trademarks of their respective companies.

See www.sap.com/copyright for additional trademark information and notices.