

SAP Integration Suite

Monthly Updates – June 2023

Product Management Team & Guests, SAP Integration Suite

Disclaimer

The information in this presentation is confidential and proprietary to SAP and may not be disclosed without the permission of SAP. Except for your obligation to protect confidential information, this presentation is not subject to your license agreement or any other service or subscription agreement with SAP. SAP has no obligation to pursue any course of business outlined in this presentation or any related document, or to develop or release any functionality mentioned therein.

This presentation, or any related document and SAP's strategy and possible future developments, products and or platforms directions and functionality are all subject to change and may be changed by SAP at any time for any reason without notice. The information in this presentation is not a commitment, promise or legal obligation to deliver any material, code or functionality. This presentation is provided without a warranty of any kind, either express or implied, including but not limited to, the implied warranties of merchantability, fitness for a particular purpose, or non-infringement. This presentation is for informational purposes and may not be incorporated into a contract. SAP assumes no responsibility for errors or omissions in this presentation, except if such damages were caused by SAP's intentional or gross negligence.

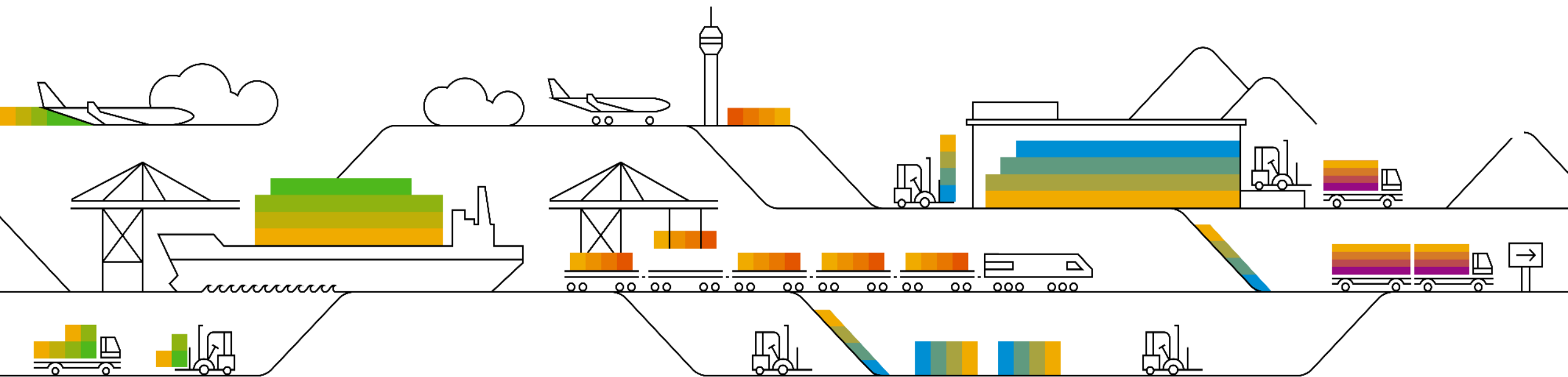
All forward-looking statements are subject to various risks and uncertainties that could cause actual results to differ materially from expectations. Readers are cautioned not to place undue reliance on these forward-looking statements, which speak only as of their dates, and they should not be relied upon in making purchasing decisions.

Agenda

- Upgrade to new version of third- party connectors
- Benefits of Leveraging Multi-Cloud Environments
- Cloud Integration
- Q & A



Integration Suite



Action required: Move previous non-SAP adapters to new adapter versions

As per [SAP note 3001980](#) the following previous adapter versions are deprecated since December 31st, 2020:

- Salesforce, Amazon Web Services, Microsoft Dynamics, SugarCRM

There haven't been any new features or enhancements for these previous adapter versions.

As of January 1st, 2024, the previous adapter versions will no longer run.

Action required

- Option 1: Migrate to updated new adapter versions and benefit from multiple new features
 - Migration support documented in [SAP Work Zone](#), e. g. [Salesforce adapter](#), [Amazon Web Services adapter](#)
 - Request access to [SAP Work Zone](#) at Annemarie Kiefer (annemarie.kiefer@sap.com)
 - SAP offers tips and tricks
 - Rojo Consultancy as the adapter expert offers consultancy services. Fees apply.
 - For further question and support, open a ticket on the “LOD-HCI-PI-CON-TPRO” component, subject: “Help with upgrading to the OEM adapters”
- Option 2: Purchase new Advantco adapter versions from Advantco with support from Advantco only
- For both options: Delete integration flows using the adapters that are no longer in use and undeploy adapters

SAP Integration Suite

Benefits of Leveraging Multi-Cloud Environments – Available Today

■ Simplified licensing

- Simplified consumption based on common metric (messages) with (almost) unlimited asynchronous [JMS message queues](#)
- Unlimited B2B Libraries
- **Free** SAP to SAP integration messages (for predefined content)

■ Operations

- **Availability on hyperscale environments, such as AWS, Azure, Google Cloud Platform, Alibaba Cloud etc.**
- [No downtime for weekly \(patches\) and monthly \(features\) maintenance activities](#) (instead of 2h), [99.95% SLA](#)
- **Quarterly maintenance** windows (major upgrades) reduced to 4 hours (instead of 12 hours)

■ Features and functions

- Unified user experience with simplified navigation between integration services
- Message mappings and Groovy scripts as reusable artifacts across Integration Packages
- Consuming Cloud Integration Adapters from SAP Business Accelerator Hub
- Edge Integration Cell for on-premise to on-premise integrations in hybrid landscapes **(currently in beta)**
- Migration assessment capability to elevate from SAP Process Orchestration to SAP Integration Suite
- **Trading Partner Management** to centrally manage customers, vendors and logistics providers for B2B/EDI exchange, **B2B Monitoring**
- **Integration assessment service** based on SAP Integration Solution Advisory Methodology
- Dropbox, MS Azure Storage (Blob, File, Queue, Table), MS SharePoint, MDI, RabbitMQ, Service Now, Slack, Splunk, Workday adapters
- Unlimited storage of message processing logs; MPL integration to external persistence, such as Splunk
- Data type and message type editor
- User defined functions with function libraries

SAP Integration Suite

Benefits of Leveraging Multi-Cloud Environments – Road Map

- Additional adapters:
 - AWS Redshift, Google Workspace, GoToWebinar, Microsoft 365, OFTP2, ON24, RFC Sender, Dataspace Integration, ...
- User defined functions with imported archives
- Archiving of B2B messages created in trading partner management scenarios
- Additional B2B libraries in Integration Advisor for business partner & network integrations, e. g. TRADACOMS
- Exactly Once In Order handling
- Where-used functionality for security material
- Where used functionality for additional artifacts, e. g. scripts, mappings
- Fine-granular access policies on package level
- Fine-granular access policies for security materials
- Message history download
- Enhanced API analytics, operations, proactive API security leveraging AI / ML: Detection of API usage patterns, API anomalies, API surge, Identification of rogue users, automated KPI analysis
- ...

Migration accelerators to hyperscaler environments

Help customers transition to Integration Suite from Neo to multi-cloud environment in a nondisruptive way

Cloud Integration

- Free migration tooling [SAP note 2937549](#)
- [Simplified migration tool user experience](#)
- In scope: prepackaged integration content, custom integration, number ranges, public certificates, value mappings

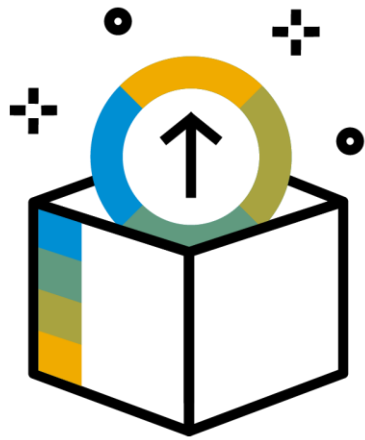
API Management

- Migration of design-time artifacts [Command line tool](#)
- Step-by-step tenant [migration guide](#)
- In scope: API products, API proxies, rate plans, policy templates, access control for API products, developers, application developers, custom charts, key value map (unencrypted)

The image displays three overlapping screenshots related to SAP migration accelerators. The top-right screenshot shows the SAP Note 2937549, titled 'SAP Cloud Platform Integration for process services: Content Migration from Neo to CF Environment'. It provides details about the component (LOD-HCI-PI-DOC), category (Upgrade information), and release status (Released for Customer). The bottom-left screenshot shows the 'Collection Runner' tool interface, displaying a list of migration tasks such as 'CPI MIG 01 Co', 'CPI MIG 02 Re', and 'CPI MIG 03 Pr'. The bottom-right screenshot shows the 'SAP Cloud Platform API Management' documentation page, specifically the 'Migration Assistance for API Management from Neo to Cloud Foundry Environment' section, which outlines the process of migrating API Management subscriptions from Neo to Cloud Foundry.

Migration accelerators

Fast-track your move to multi-cloud



**Accelerator for
migration of design-
time artifact**

In scope for the accelerator

API Management – API products, API proxies, rate plans, policy templates, access control for API products, developers, application developers, custom charts, key value map (unencrypted)

Cloud Integration – Prepackaged integration content (unmodified or configure only), custom integration, number ranges, public certificates, value mappings

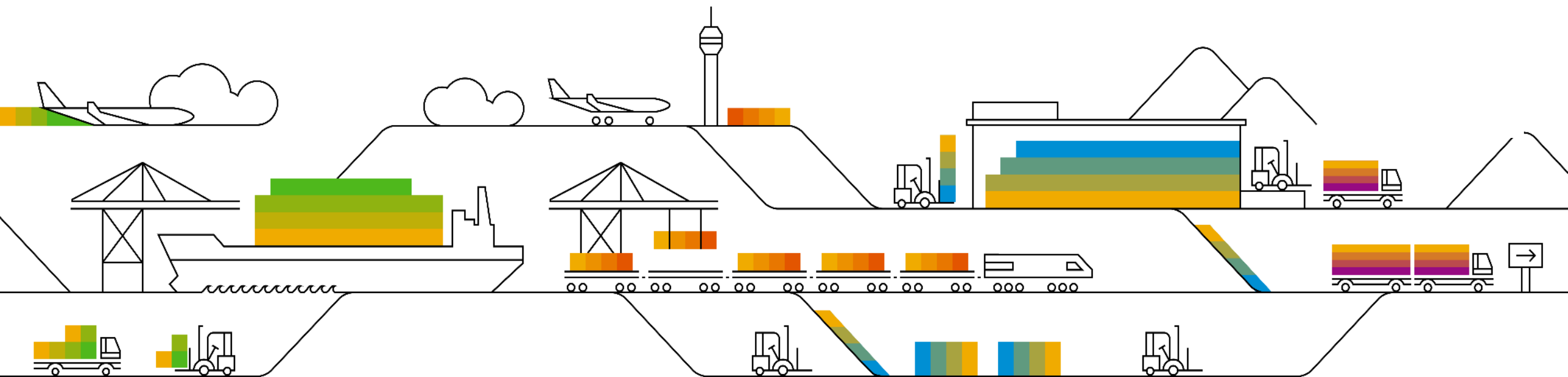
Out of scope for the accelerator*

API Management – Certificates, encrypted key value maps, API provider passwords, quota counters, monetization bills

Cloud Integration – Message monitoring data, JMS queues data, tenant sizing, data store, message store, local and global variables, partner directory, access policies, custom tags, user credentials, private certificates

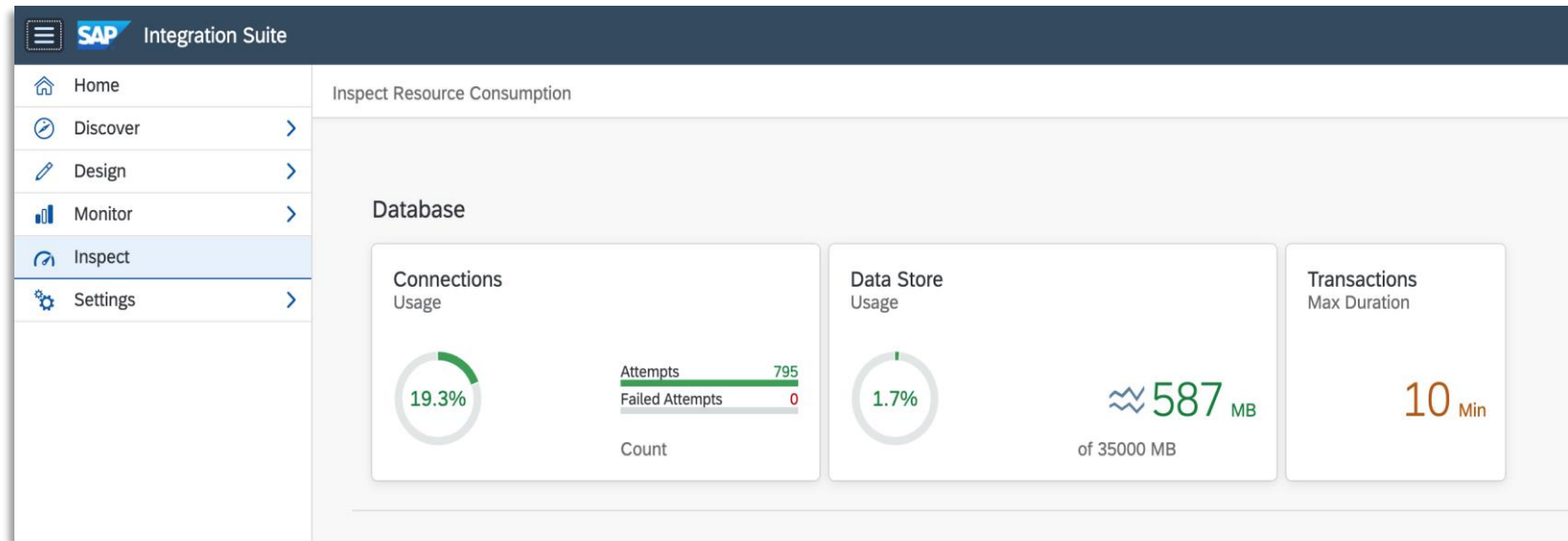
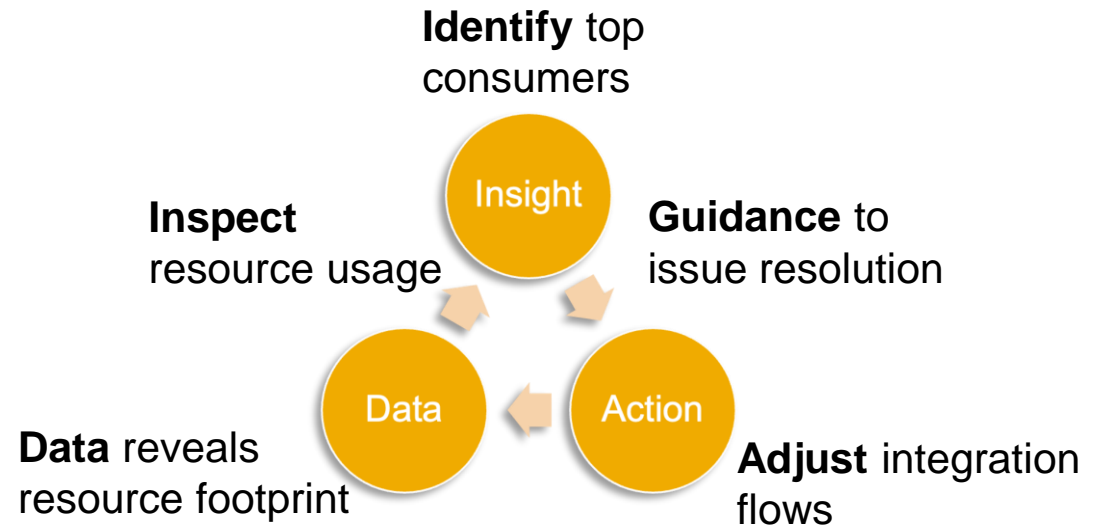
** User action required*

Cloud Integration



Inspect Resource Usage

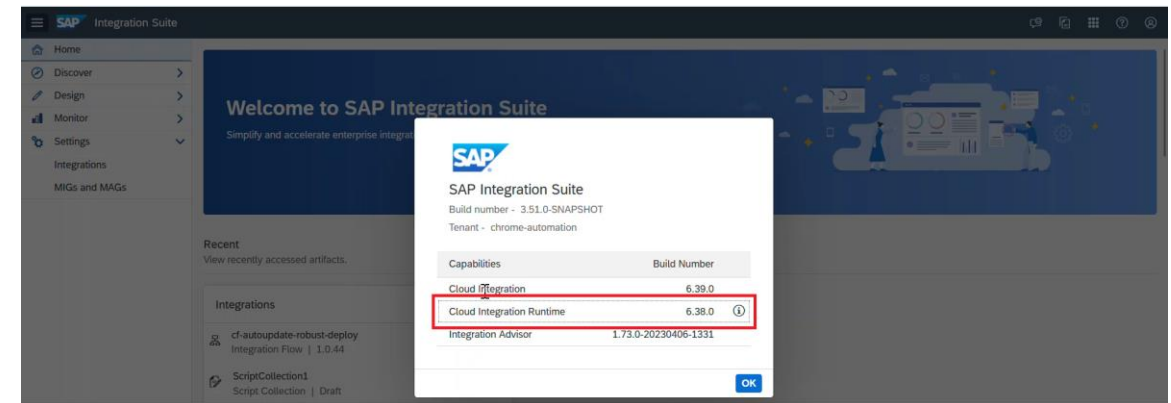
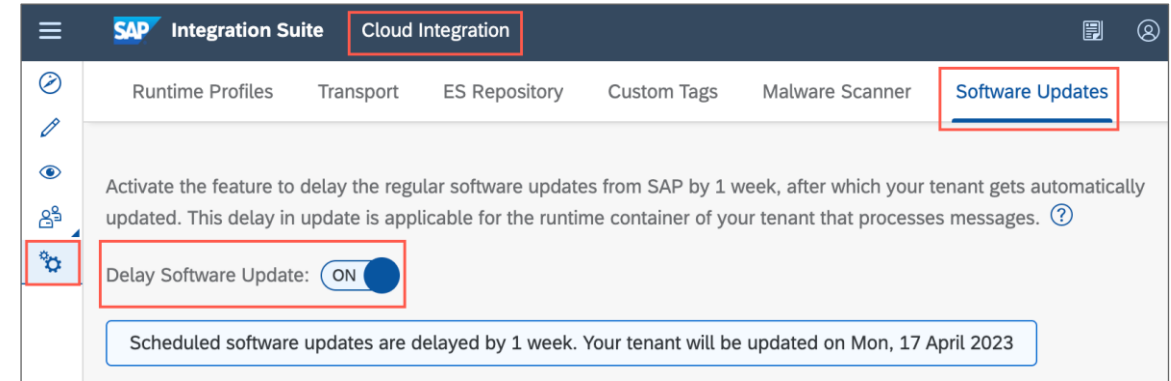
- **Empower customers** to control resource utilization by their integration flows
- **Common use cases**
 - Resource overview at a glance,
 - Troubleshooting bottlenecks
 - Identify trends in integration flows
- **Current scope**
 - Database (database connections, storage, transactions)
 - More to follow
- **Available in**
 - SAP Integration Suite
 - SAP Cloud Integration in the **Cloud Foundry** environment



[Blog Post](#) | [Help Documentation](#) |

Delayed software update in Cloud Integration

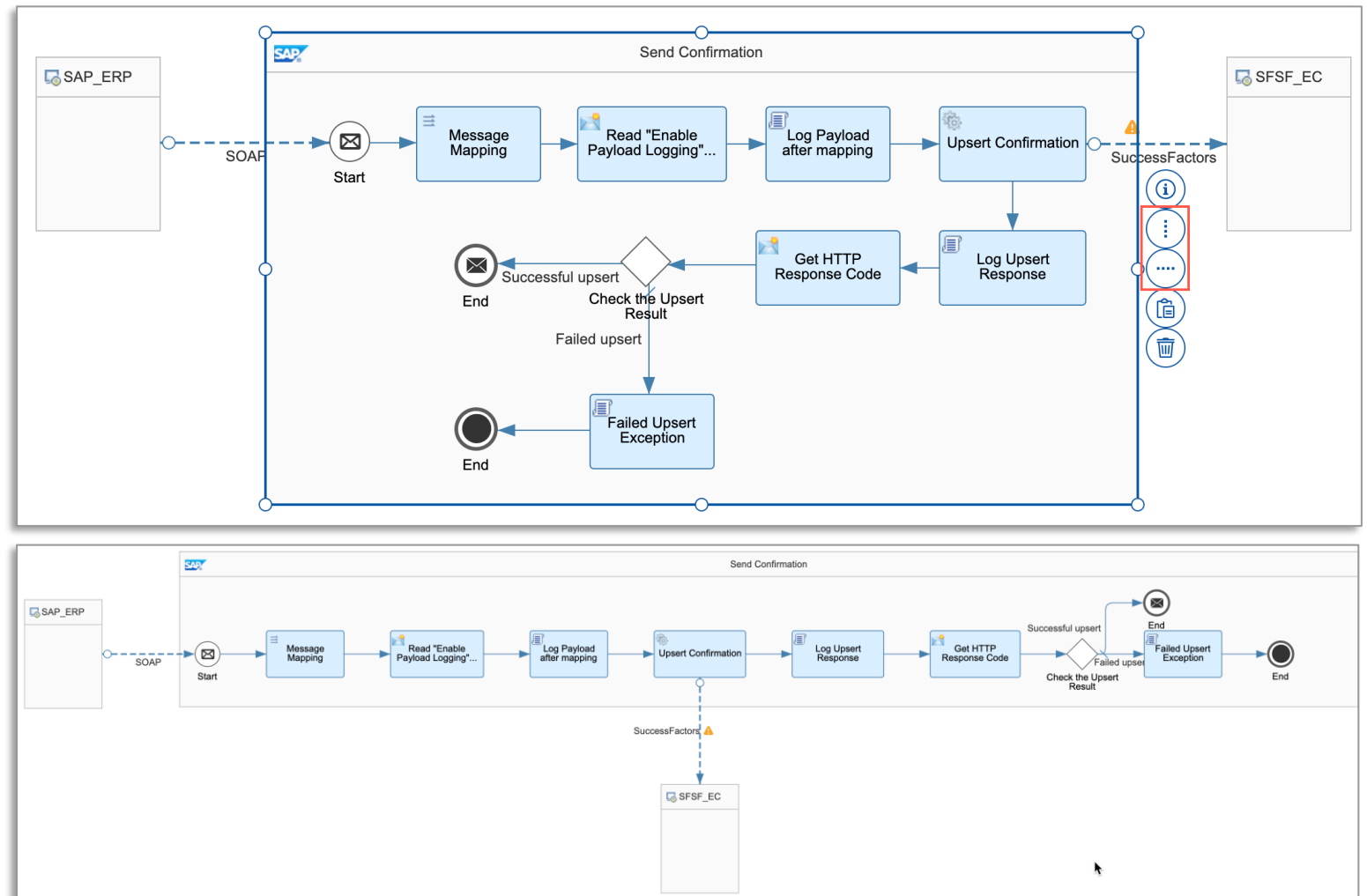
- Production tenant updates and increments can be **delayed by a week** through a self-service option
- Effectively **mitigates regression risk** for custom integration flows
- Delay the software update in the production tenant and consume the regular update in the test tenant
- Applicable for **Cloud Integration runtime** only
- The delay is applicable only for the **monthly increments**
- The **About** dialog in the tenant displays the cloud integration runtime version, facilitating easy comparison of versions across test and production tenants



Navigate to the **Profile Button** (top-right corner) > Click **About** to see the Cloud Integration Runtime version

Auto Layout Feature in Integration Flow Editor

- The auto layout feature helps you to format and beautify the integration flows to make them look attractive and easy to understand.
- The auto layout feature has two variants:
 - **Arrange Horizontally:** This will format and arrange the flow steps in the integration process from left to right.
 - **Arrange Vertically:** This will format and arrange the flow steps in the integration process from top to bottom.



Other Updates

- Using the JMS sender and receiver adapter, you can now define queue names with a maximum of 80 characters.
See: [Configure the JMS Sender Adapter](#)
[Configure the JMS Receiver Adapter](#)
- In the latest versions of the HTTP, OData V2, and OData V4 receiver adapters, you have the option to disable the creation of attachments when the message processing fails.
See: [HTTP Receiver Adapter](#)
[Configure the OData V2 Receiver Adapter](#)
[Configure the OData V4 Receiver Adapter](#)
- The **Security Content** API contains the new resource **Secure Parameter**. Available in Neo and will be available in CF in the upcoming release.
You can use this resource to create, update, read, and delete **Secure Parameter** artifacts.
See: [Security Content](#)
- Product profiles are being renamed as "Runtime Profiles".
See: [Runtime Profiles](#)

Other Updates

- The features for the management of PGP keys have been disabled for the **Security Material** tile (under **Manage Security**). All features to manage PGP keys are now accessible from the **PGP Keys** tile (under **Manage Security**).
See: [Managing PGP Keys](#)
- A new parameter has been introduced for the XI sender and receiver adapter that allows you to compress the stored message if the JMS queue is used as temporary storage.
See: [Configure the XI Sender Adapter](#)
[Configure the XI Receiver Adapter](#)
- EDI to XML Converter, XML to EDI Converter, EDI Splitter, and EDI Validator now support EDIFACT Syntax Version 2.
See: [Define EDI to XML Converter](#)
[Define XML to EDI Converter](#)
[Define Splitter](#)
[Define EDI Validator](#)

What is #AskAnythingIntegration?

Provides a platform for customers, partners, consultants, and participants to ask their most important and top priority questions and get them answered by the panel of experts.

- Questions can be sent upfront or posted directly in the call
- Questions and answers will then be published as a public FAQ document with regular updates and additions

Panel of Experts: Speakers of the monthly webinar + product Management team

Schedule: Runs every alternate month

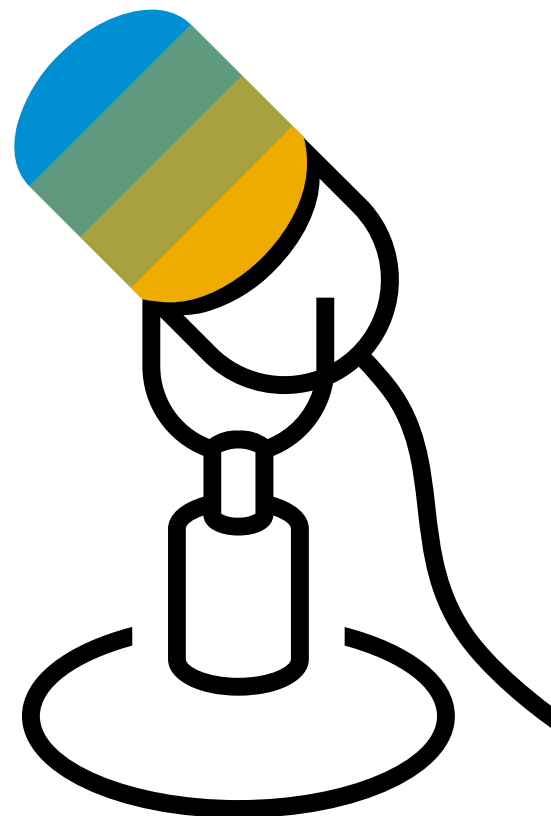
Duration: 20 mins

Moderator: Palak (palak.garg@sap.com)

Note: “Interact with #IntegrationBlackBelt” section will transition to alternate months.



Q & A



Thank you.

Follow us



www.sap.com/contactsap

© 2023 SAP SE or an SAP affiliate company. All rights reserved.

No part of this publication may be reproduced or transmitted in any form or for any purpose without the express permission of SAP SE or an SAP affiliate company.

The information contained herein may be changed without prior notice. Some software products marketed by SAP SE and its distributors contain proprietary software components of other software vendors. National product specifications may vary.

These materials are provided by SAP SE or an SAP affiliate company for informational purposes only, without representation or warranty of any kind, and SAP or its affiliated companies shall not be liable for errors or omissions with respect to the materials. The only warranties for SAP or SAP affiliate company products and services are those that are set forth in the express warranty statements accompanying such products and services, if any. Nothing herein should be construed as constituting an additional warranty.

In particular, SAP SE or its affiliated companies have no obligation to pursue any course of business outlined in this document or any related presentation, or to develop or release any functionality mentioned therein. This document, or any related presentation, and SAP SE's or its affiliated companies' strategy and possible future developments, products, and/or platforms, directions, and functionality are all subject to change and may be changed by SAP SE or its affiliated companies at any time for any reason without notice. The information in this document is not a commitment, promise, or legal obligation to deliver any material, code, or functionality. All forward-looking statements are subject to various risks and uncertainties that could cause actual results to differ materially from expectations. Readers are cautioned not to place undue reliance on these forward-looking statements, and they should not be relied upon in making purchasing decisions.

SAP and other SAP products and services mentioned herein as well as their respective logos are trademarks or registered trademarks of SAP SE (or an SAP affiliate company) in Germany and other countries. All other product and service names mentioned are the trademarks of their respective companies.

See www.sap.com/copyright for additional trademark information and notices.