

SAP Security webcast

Security-related
Expert Guided Implementation
(EGI) offerings
to make your life easier

Victoria Carroll, SAP
August 17, 2023

Public



Disclaimer

The information in this presentation is confidential and proprietary to SAP and may not be disclosed without the permission of SAP. Except for your obligation to protect confidential information, this presentation is not subject to your license agreement or any other service or subscription agreement with SAP. SAP has no obligation to pursue any course of business outlined in this presentation or any related document, or to develop or release any functionality mentioned therein.

This presentation, or any related document and SAP's strategy and possible future developments, products and or platforms directions and functionality are all subject to change and may be changed by SAP at any time for any reason without notice. The information in this presentation is not a commitment, promise or legal obligation to deliver any material, code or functionality. This presentation is provided without a warranty of any kind, either express or implied, including but not limited to, the implied warranties of merchantability, fitness for a particular purpose, or non-infringement. This presentation is for informational purposes and may not be incorporated into a contract. SAP assumes no responsibility for errors or omissions in this presentation, except if such damages were caused by SAP's intentional or gross negligence.

All forward-looking statements are subject to various risks and uncertainties that could cause actual results to differ materially from expectations. Readers are cautioned not to place undue reliance on these forward-looking statements, which speak only as of their dates, and they should not be relied upon in making purchasing decisions.

Agenda

01

What is an EGI?

02

EGI – Implementing an SAP Security Baseline Dashboard

03

EGI – Guided Self Service SOS (Security Optimization Session)

04

EGI – SAP Solution Manager Roles and Authorization Concept

05

Further Resources

06

Questions and Answers



01 What is an EGI?

Public

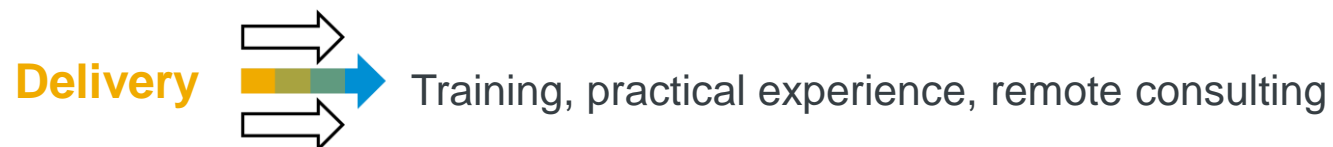


What is an EGI?

Training at its best!

- **Expert Guided Implementation (EGI)** is a multi-day remote session where participants learn how to complete a defined activity with experienced SAP service engineers.
- The sessions are three-fold:
 - During the first 1-2 hours, an SAP expert explains the execution of the target activity step-by-step.
 - Participants then execute the demonstrated steps within their own SAP environment.
 - If necessary, receive direct guidance and support from the SAP expert.

Empowering	Execution	Expertise on Demand
Web session, 1-2 hours each morning SAP expert explains step-by-step configuration using training materials and demo systems ✓	2-3 hours on the same day Participants execute demonstrated steps within their own project, on their own SAP environment ✓	During Execution Participants have direct access to an SAP expert who directly supports them remotely, if necessary, during the execution ✓

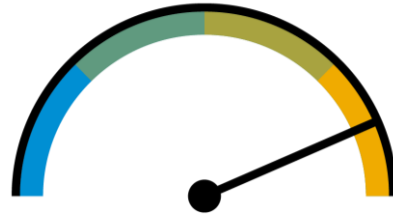


Benefits



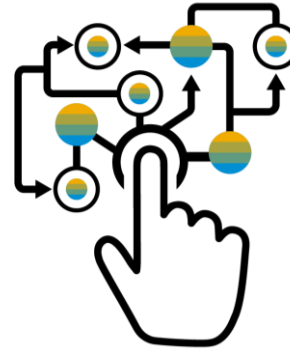
Receive guidance for execution

SAP expert supports you in the execution phase of your project to ensure optimal realization of benefits.



Fast execution, less time, more return

Methodology shortens learning and execution time.



Work in your real system environment

Direct execution within your SAP environment



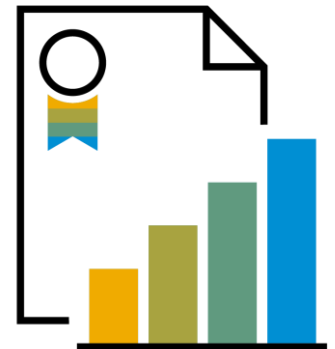
Access to expert knowledge

Direct access for individual dialogs with SAP experts

Giving you competence, confidence and comfort at all stages

How do I access an EGI?

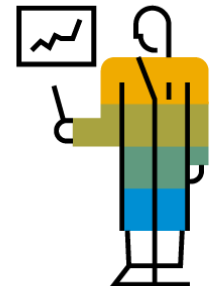
- The Expert Guided Implementation is powered by [SAP Enterprise Support Academy](#) and registration for an EGI is via the [SAP Learning Hub](#), edition for Enterprise Support.
 - Before you can access the link above, a one-time registration to SAP Learning Hub, edition for SAP Enterprise Support, is required with your S-user.
 - A detailed step-by step guide to registration can be found [here](#). It is as simple as 1-2-3.
- Access to the ‘SAP Learning Hub, edition for SAP Enterprise Support’ is included in:
 - SAP Enterprise Support
 - SAP Enterprise Support, Cloud Edition
 - SAP Product Support for Large Enterprises (PSLE)
 - See [Program Entitlement](#).
- The calendar of EGIs for the regions is generally updated on quarterly basis.
- Multiple employees from the same customer can register for the same EGI session.
- Receive a Certificate of Participation as part of your ongoing skills development.



Security-related EGIs available in the SAP Learning Hub

- **Implementing an SAP Security Baseline Dashboard**
 - SAP Learning Hub Reference: EXPERT_LED SUP_EDE_0010_0123
- **Security Optimization Service (SOS) as a Guided Self-Service**
 - SAP Learning Hub Reference: EXPERT_LED SUP_EDE_0330_1312
- **SAP Solution Manager Roles and Authorization Concept**
 - SAP Learning Hub Reference: EXPERT_LED SUP_EDE_0080_1312

Expert Guided Implementation



02 EGI – Implementing an SAP Security Baseline Dashboard

Public



Expert Guided Implementation

Implementing an SAP Security Baseline Dashboard

You want to know: how to translate a corporate SAP Security Baseline into tangible rules that can analyse the landscape for security compliance and gaps, and have the results reflected in a consumable visual dashboard?

This EGI showcases the SAP Security Baseline template (to be tailored by each customer), implementing it in SAP Solution Manager and SAP Focused Run with necessary customization of Configuration Stores.

It also includes examples of defining security dashboards in Dashboard Builder and Focused Insights (both in SAP Solution Manager), and SAP Focused Run.

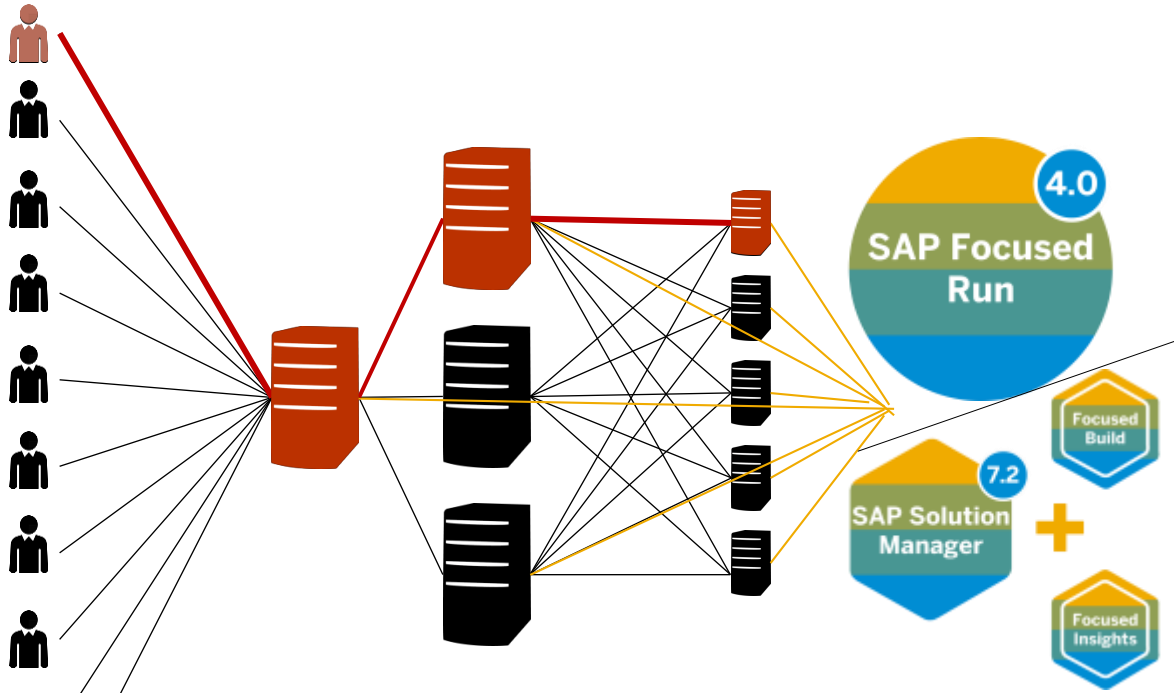
Thus, customers have an accelerated kick start to assimilate content from SAP Best Practice to act as a foundation for inhouse teams to build upon.

SAP Learning Hub Reference: EXPERT_LED
"Implementing an SAP Security Baseline Dashboard"

SUP_EDE_0010_0123

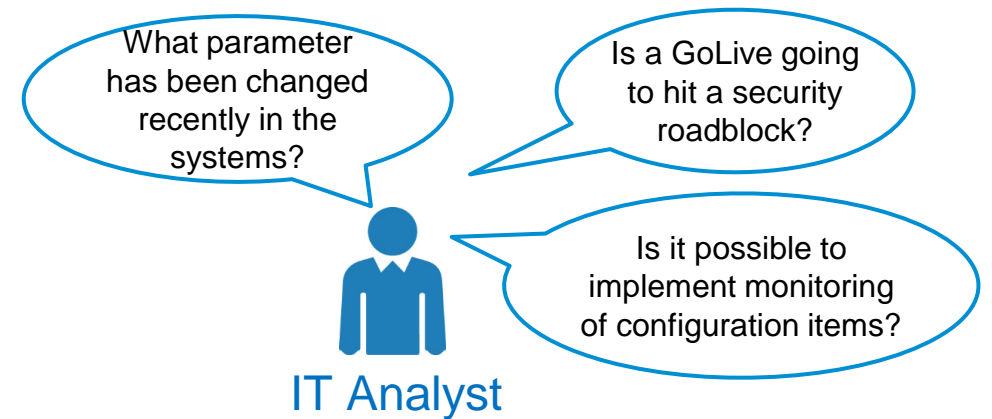


Change Diagnostics Capabilities – Motivation



Challenges

- A large number of systems... complex SAP Landscape ...
- ... need to perform comparison of current configuration status against a defined target or standard configuration baselines
- ... with minimum efforts and ASAP!

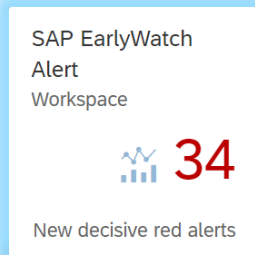


The role of the SAP Security Baseline Template

A *Template* for a “Company’s SAP Security Baseline”

Comparison against SAP recommendations

Overview
Security in EarlyWatch Alert



Detail

System	IT Admin Role	Priority	Security Notes	Hot News	Performance Notes	Legal Change	Favorite
SD1-ABAP	Undefined	Undefined	296	213	373	72	★
FAT-HANA03	Undefined	Undefined	62	95	24	1	★
AS4-ABAP	Undefined	Undefined	642	251	366	92	★
WNR-ABAP	Development System	Medium	466	217	455	98	★
HREX-HANA03	Test System	Medium	75	94			
HREX-ABAP	DEVELOP	Undefined	231	217			
SMA-ABAP	Undefined	Undefined	766	257			
ZGR-ABAP	DEVELOP	Undefined	905	277			

Detailed Services and resources
Security Optimization Service
Security Notes page on Support Portal
System Recommendations application
SAP Security Baseline template

inputs →

Company Security Policy

Company’s SAP Security Baseline

Aka: internal regulations relevant for all systems – to be enforced.

“Target System” (rule sets)

→ automate

Comparison against company’s security policy Management Dashboards

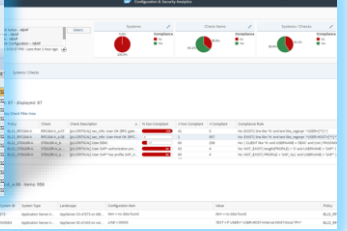


Configuration Validation

ID	Issue Title	Object	Category	State	Msg	Component
212
213
214
215
216
217
218
219
220

SAP Solution Manager

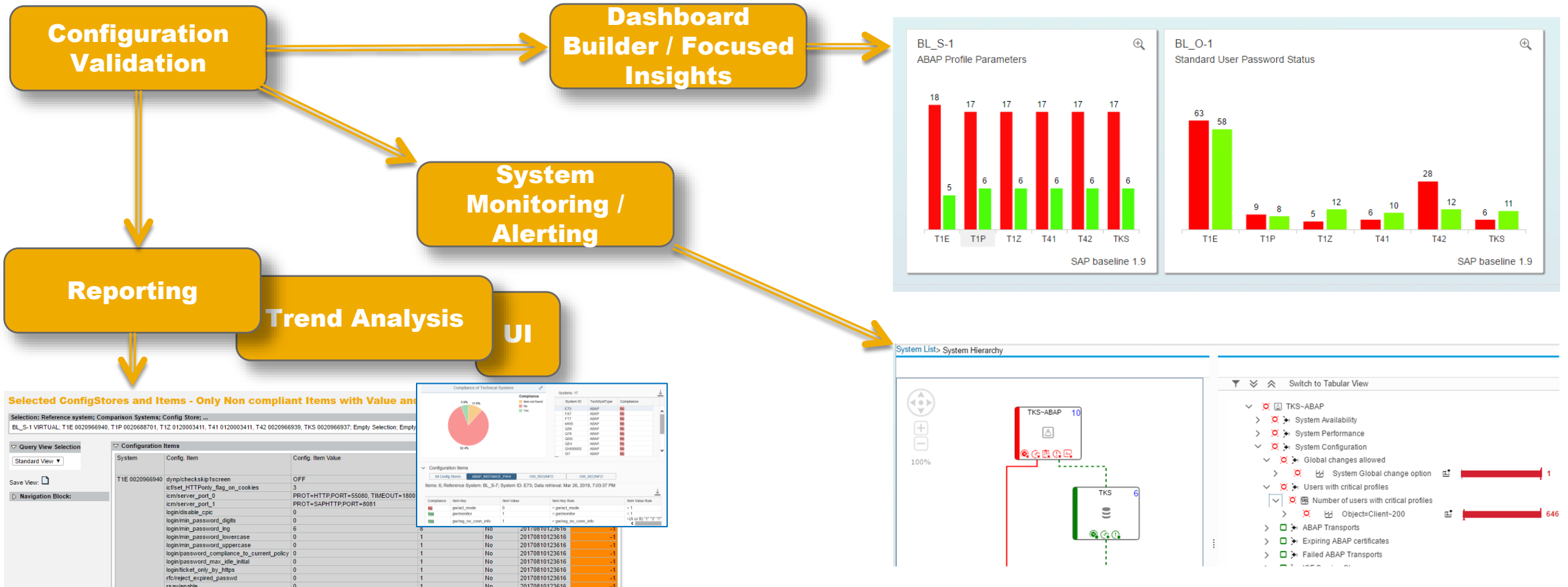
Configuration and Security Analytics



SAP Focused Run

Big Picture: Configuration Validation in Reporting / Alerting / Management Dashboard / Trend Analysis

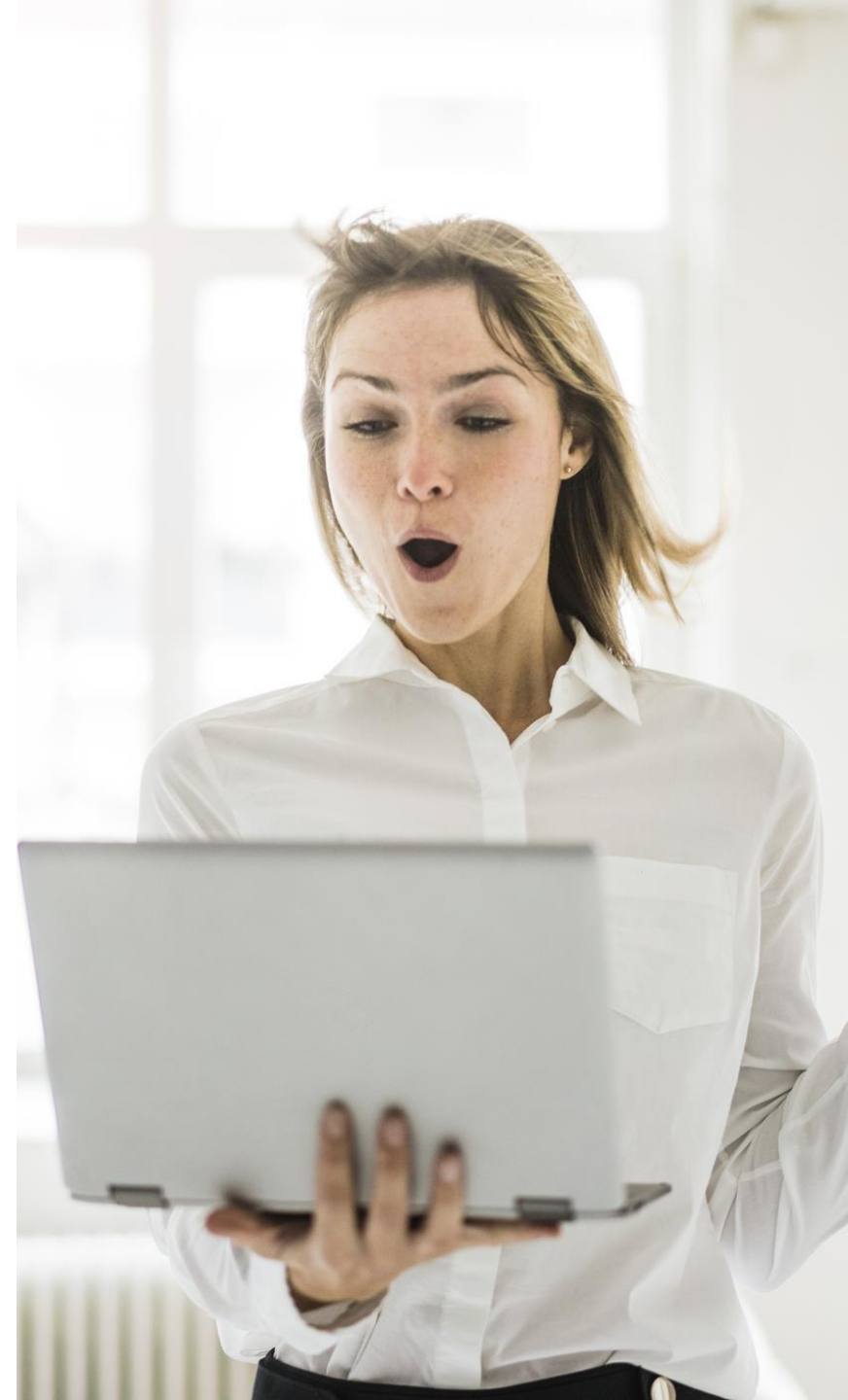
Configuration Validation 'Target Systems' (rules sets) could be used in several areas of the landscape.



Background scheduling / sending via email is done with report DIAGCV_SEND_CONFIG_VALIDATION

Live Demonstration

- Showcase breadth of coverage, depth of detail, and aggregation for overviews
- Visualization options and drilldown capabilities
- Vision across different platforms



For customers that have SAP Solution Manager Configuration Validation: detailed reporting

Selected ConfigStores and Items - Items with Value and Value of Target System

Selection: Reference system; Comparison Systems; Config Store; ...

1APWDPOLVIRTUAL; A4H 0020624476, S4H 0020624476; Empty Selection; Empty Selection

Query View Selection

Standard View

Save View:

Navigation Block:

Configuration Items

ConfigStore Name	System	Config. Item	Config. Item Value	Value of Target System	Compliance	Last Check [UTC]	Compliant (1=Yes, -1=No, ''=Not valuated)
ABAP_INSTANCE_PAHI	A4H 0020624476	login/min_password_Ing	6	8	No	20230628103723	-1
		login/password_downwards_compatibility	0	0	Yes	20230628103723	1
		login/password_max_idle_initial	0	1	No	20230628103723	-1
	S4H 0020624476	login/min_password_Ing	6	8	No	20230628103708	-1
		login/password_downwards_compatibility	1	0	No	20230628103708	-1
		login/password_max_idle_initial	0	1	No	20230628103708	-1
AUTH_SECURITY_POLICY	A4H 0020624476	[XXX]/POLICY_TEMPLATE/DISABLE_PASSWORD_LOGON/	0	ATTRIB_VALUE:	Yes	20230628050008	1
		[XXX]/POLICY_TEMPLATE/MAX_FAILED_PASSWORD_LOGON_ATTEMPTS/	12	ATTRIB_VALUE:	Yes	20230628050008	1
		[XXX]/POLICY_TEMPLATE/MAX_PASSWORD_IDLE_INITIAL/	0	ATTRIB_VALUE:	Yes	20230628050008	1
		[XXX]/POLICY_TEMPLATE/MAX_PASSWORD_IDLE_PRODUCTIVE/	0	ATTRIB_VALUE:	Yes	20230628050008	1
		[XXX]/POLICY_TEMPLATE/MIN_PASSWORD_CHANGE_WAITTIME/	1000	ATTRIB_VALUE:	Yes	20230628050008	1
		[XXX]/POLICY_TEMPLATE/MIN_PASSWORD_DIFFERENCE/	1	ATTRIB_VALUE:	Yes	20230628050008	1
		[XXX]/POLICY_TEMPLATE/MIN_PASSWORD_DIGITS/	0	ATTRIB_VALUE:	Yes	20230628050008	1
		[XXX]/POLICY_TEMPLATE/MIN_PASSWORD_LENGTH/	6	ATTRIB_VALUE:	Yes	20230628050008	1
		[XXX]/POLICY_TEMPLATE/MIN_PASSWORD_LETTERS/	0	ATTRIB_VALUE:	Yes	20230628050008	1
		[XXX]/POLICY_TEMPLATE/MIN_PASSWORD_LOWERCASE/	0	ATTRIB_VALUE:	Yes	20230628050008	1
		[XXX]/POLICY_TEMPLATE/MIN_PASSWORD_SPECIALS/	0	ATTRIB_VALUE:	Yes	20230628050008	1
		[XXX]/POLICY_TEMPLATE/MIN_PASSWORD_UPPERCASE/	0	ATTRIB_VALUE:	Yes	20230628050008	1
	[XXX]/POLICY_TEMPLATE/PASSWORD_CHANGE_FOR_SSO/	1	ATTRIB_VALUE:	Yes	20230628050008	1	
	[XXX]/POLICY_TEMPLATE/PASSWORD_CHANGE_INTERVAL/	0	ATTRIB_VALUE:	Yes	20230628050008	1	
	[XXX]/POLICY_TEMPLATE/PASSWORD_COMPLIANCE_TO_CURRENT_POLICY/	0	ATTRIB_VALUE:	Yes	20230628050008	1	
	[XXX]/POLICY_TEMPLATE/PASSWORD_HISTORY_SIZE/	1	ATTRIB_VALUE:	Yes	20230628050008	1	
	[XXX]/POLICY_TEMPLATE/PASSWORD_LOCK_EXPIRATION/	1	ATTRIB_VALUE:	Yes	20230628050008	1	
	S4H 0020624476	[XXX]/POLICY_TEMPLATE/DISABLE_PASSWORD_LOGON/	0	ATTRIB_VALUE:	Yes	20230627180015	1
		[XXX]/POLICY_TEMPLATE/MAX_FAILED_PASSWORD_LOGON_ATTEMPTS/	10	ATTRIB_VALUE:	Yes	20230627180015	1
		[XXX]/POLICY_TEMPLATE/MAX_PASSWORD_IDLE_INITIAL/	0	ATTRIB_VALUE:	Yes	20230627180015	1
		[XXX]/POLICY_TEMPLATE/MAX_PASSWORD_IDLE_PRODUCTIVE/	0	ATTRIB_VALUE:	Yes	20230627180015	1
[XXX]/POLICY_TEMPLATE/MIN_PASSWORD_CHANGE_WAITTIME/		1	ATTRIB_VALUE:	Yes	20230627180015	1	
[XXX]/POLICY_TEMPLATE/MIN_PASSWORD_DIFFERENCE/		1	ATTRIB_VALUE:	Yes	20230627180015	1	
[XXX]/POLICY_TEMPLATE/MIN_PASSWORD_DIGITS/		0	ATTRIB_VALUE:	Yes	20230627180015	1	

Row 1 / 40

For customers that have SAP Solution Manager Configuration Validation Reporting (simple UI)

SAP Configuration Validation

Technical Systems

Selection

- *Select Reference System: 1HPWDPOL
- *Select Comparison List: HANADB
- Configuration Stores: [Empty]

Apply selection

Compliance of Technical Systems

Table of Technical Systems

Systems: 6

System ID	System Type	Compliance
HDB_S4H	HANADB	No
HDBSYS_A	HANADB	Yes
HDBSYS_J	HANADB	Yes
HDBSYS_S	HANADB	Yes
HDB_A4H	HANADB	Yes
HDB_J2E	HANADB	Yes

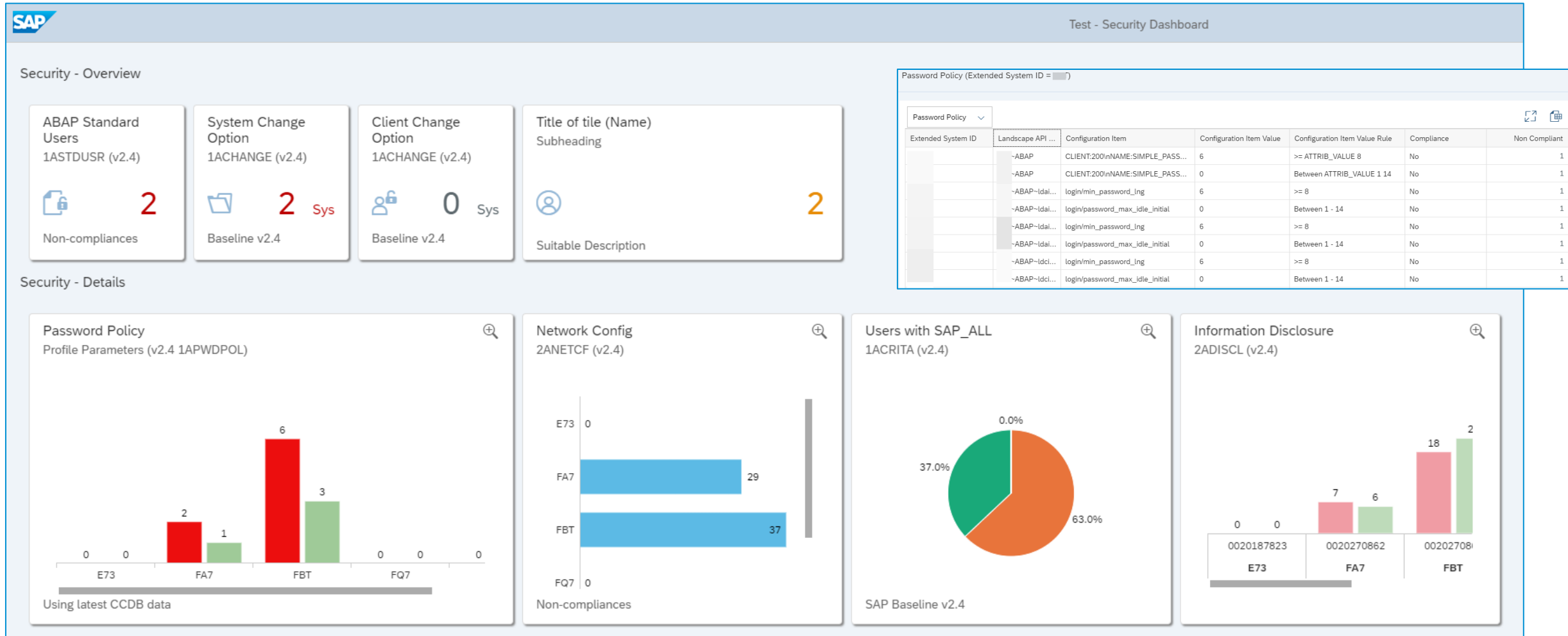
Configuration Items

All Config Stores | HDB_PARAMETER

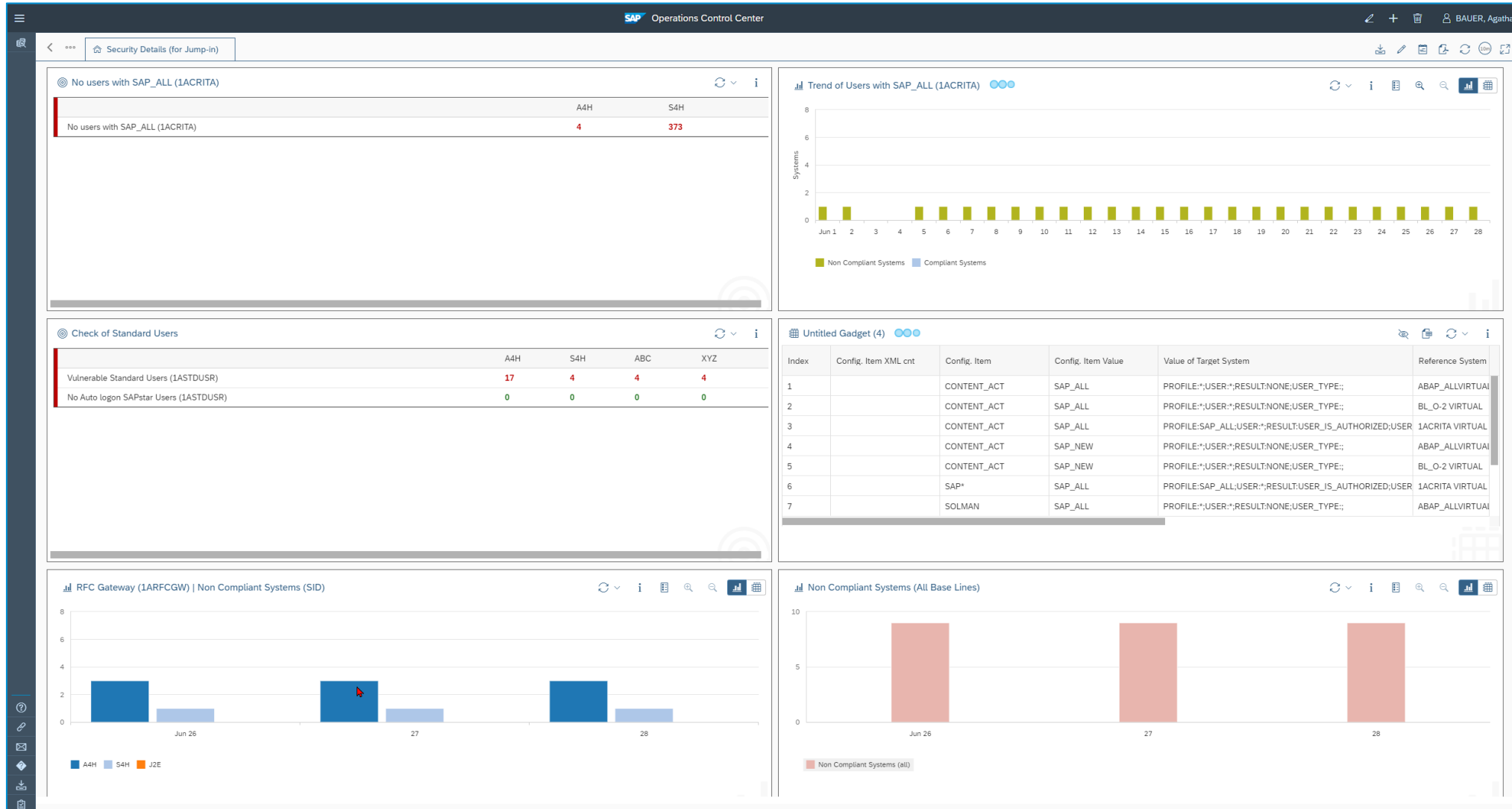
Table of Items; Select Reference System: 1HPWDPOL; System ID: HDB_S4H; Data retrieval: Jun 27, 2023, 7:00:11 PM; Items: 4 - displayed: 4

Compliance	Item Key	Item Value	Item Key Rule	Item Value Rule	Landscape
No	FILE = indexserver.ini TENANT = HOST = SECTION = password policy KEY = maximum_unused_initial_password_lifetime LAYER = DATABASE	VALUE = 365	FILE = indexserver.ini TENANT Contains * HOST Contains * SECTION = password policy KEY Contains maximum_unused_init*al_password_lifetime LAYER Contains *	VALUE <= 14	HDB_S4H
No	FILE = indexserver.ini TENANT = HOST = SECTION = password policy KEY = maximum_unused_initial_password_lifetime LAYER = SYSTEM	VALUE = 365	FILE = indexserver.ini TENANT Contains * HOST Contains * SECTION = password policy KEY Contains maximum_unused_init*al_password_lifetime LAYER Contains *	VALUE <= 14	HDB_S4H

For customers that have SAP Solution Manager Dashboard Builder



For customers that have SAP Solution Manager Focused Insights, OCC model



For customers that have SAP Focused Run Configuration & Security Analysis (CSA) reporting

SAP Configuration & Security Analysis

Validation

Policy: *
1ACHANGE
Validated at 28/06/2023, 06:05:02 - 5 hours ago

Systems

0.0%
100.0%

Check Items

25.0%
75.0%

Systems / Checks

50.0%
50.0%

Systems Checks Systems / Checks

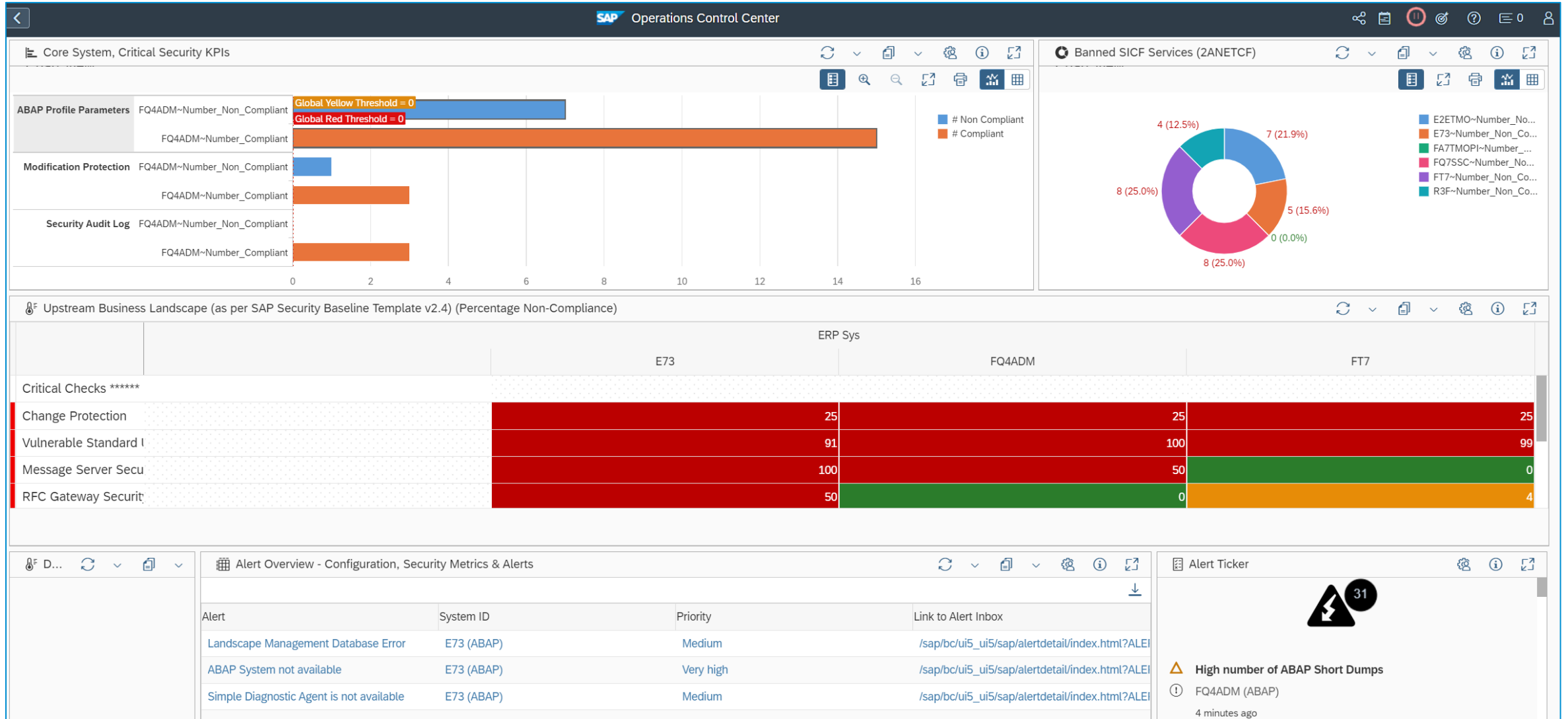
Compliance

Checks - Items: 2 - displayed: 2

Display Check Filter Area

Compliant	Policy	Check	Check Description	% Non Compliant	# Non Compliant	# Compliant	Compliance Rule
No	1ACHANGE	CHANGE-A_a	[p1-CRITICAL] Global Modifiable Change Option for Production ...	100	1	0	No: NonCompliance Rule: (NAME = 'GLOBA
Yes	1ACHANGE	CHANGE-A_b	[p1-CRITICAL] Client Change Option for Production Systems	0	0	3	Yes: Compliance Rule: (MANDT like '% ' and

For customers that have SAP Focused Run OCC Dashboard



What is in it for me?

Why do this? You want to...

- Gain **transparency** in one place on selected technical aspects like security configurations, access control, lists, expiring certificates, or critical authorizations compared against your corporate SAP Security Baseline.
- **Automate** the validation of the systems in your landscape against your corporate security requirements, or at least against Best Practice configurations as recommended by SAP.
- Identify gaps to the baseline and **measure** progress of remediation projects.
- Have cross-system **overviews** visually represented in a security dashboard with the ability to **drill down** into the detail on a granular level.



What is in it for me?

What do you gain?

- Clear **understanding** of SAP Security Baseline Best Practices with technical representation of rules for automated reporting of managed system landscape compliance.
- Definition of **starter** dashboards in respective ALM platform.
- **Empowerment** to adapt and evolve content fitting for their corporate requirements going forwards.
- **Integrate** checks into project GoLives, ongoing operations, preparations for security audits, monthly patch management activities etc.
- **Comparison** of system functionality in creating dashboards, across SAP ALM platforms.

What is in it for me?

Who should do this?

- This 5-day EGI suits both security management, governance, and technical basis teams – as collaboration is key.

When?

- The best time – is now!
- Participating in this EGI again in the future is a great way to stay aware of new content and new resources.
 - The SAP Security Baseline template continues to evolve reflecting updates in SAP Best Practice.
 - The features and capabilities of the SAP Focused Run and SAP Cloud ALM continue to be developed.
 - Hence, this EGI will **grow** to take these new innovations.

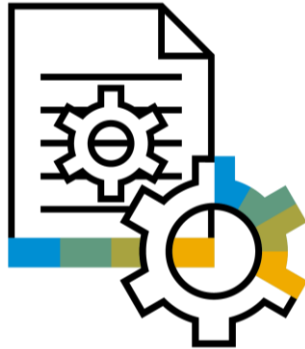
See SCN Blog: <https://blogs.sap.com/2023/06/13/implementing-an-sap-security-baseline-dashboard-expert-guided-implementation/>

How does this EGI help make my life easier?



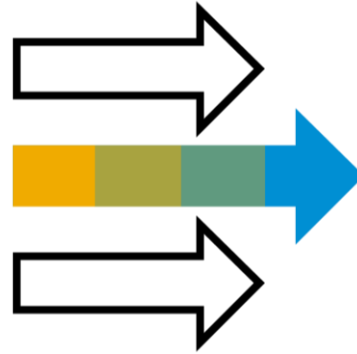
Gain **transparency** in one place of critical KPIs down to granular level.

- See [Supported Products](#)



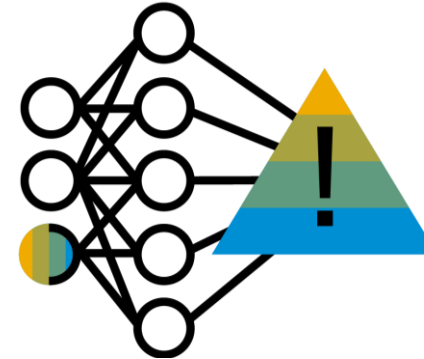
Automate the validation of the systems in your landscape **in a click** or **scheduled** for trend analysis.

- Get an accelerated kick start into a solid use case – SAP security Best Practices.



Identify gaps easily, and **track progress** of measures easily.

- Strategy to keep rules up to gate.
- Adapt them to your needs.



Leverage **integration** of Configuration Validation or CSA in

- Technical System Monitoring and Alerting (MAI)
- Dashboards
- Guided Procedures
- yielding further value with low effort.



Gain **insight** into further possibilities that extends into other use cases.

- Gain understanding of comparison between platforms and authorization concepts.

Expert Guided Implementation Schedule

Implementing an SAP Security Baseline Dashboard

Day 1	Day 2	Day 3	Day 4	Day 5
<p>Empowering lesson</p> <ul style="list-style-type: none"> • Introduction to SAP Secure Operations Map • Introduction of SAP Security Baseline Template. • SAP expert explains preparation steps and show the fulfilment of prerequisites in SAP SolMan and in SAP FRUN. <p>(Web session, 1-2 h. in the morning)</p>	<p>Empowering lesson</p> <ul style="list-style-type: none"> • Stakeholder and Maintenance considerations for evolving security baseline into the future. • Understanding of data quality in the CCDB, with overview of key Configuration Stores. • Accelerated start: Import rules <p>(Web session, 1-2 h. in the morning)</p>	<p>Empowering lesson</p> <ul style="list-style-type: none"> • In SAP Solution Manager: <ul style="list-style-type: none"> • Defining rules from scratch in Configuration Validation. • Reporting templates & simple reporting UI • Trend Analysis • Email reports • Tips and Tricks <p>(Web session, 1-2 h. in the morning)</p>	<p>Empowering lesson</p> <ul style="list-style-type: none"> • Creating a sample Security Dashboard in SAP Solution Manager: <ul style="list-style-type: none"> • Dashboard Builder • Focused Insights • Demos to compare and contrast applications • Segregation and Authorization Concept • Integration to System Monitoring and Alerting overview. <p>(Web session, 1-2 h. in the morning)</p>	<p>Empowering lesson</p> <ul style="list-style-type: none"> • Overview of validating SAP Security Baseline using SAP FRUN (and roadmap). <ul style="list-style-type: none"> • Defining xml policies in CSA. • Scheduling execution. • Sample dashboard elements • CSA in SAP Cloud ALM (roadmap as available) • Wrap up, additional information. <p>(Web session, 1-2 h. in the morning)</p>
<p>Execution by customer</p> <ul style="list-style-type: none"> • Check and fulfil prerequisites by customer in own system backed by on-demand expertise and support. <p>(Remote support in the afternoon)</p>	<p>Execution by customer</p> <ul style="list-style-type: none"> • Implementation and testing by customer, in own system or public demo system. <p>(Remote support in the afternoon)</p>	<p>Execution by customer</p> <ul style="list-style-type: none"> • Implementation and testing by customer, in own system or public demo system. • Define and modify own rules. • Set up Trend Analysis Jobs <p>(Remote support in the afternoon)</p>	<p>Execution by customer</p> <ul style="list-style-type: none"> • Implementation and testing by customer, in own system or public demo system. • Create sample dashboards for security KPIs. <p>(Remote support in the afternoon)</p>	<p>Execution by customer</p> <ul style="list-style-type: none"> • Define some policies in xml format. • Review potential questions or issues. <p>(Remote support in the afternoon)</p>
<p>Goal of the day</p> <ul style="list-style-type: none"> • Understanding of value of having defined collated corporate SAP Security Baseline. • Complete fulfillment of prerequisites in relevant ALM platform. 	<p>Goal of the day</p> <ul style="list-style-type: none"> • Know where to get example policies from SAP. • Compare to own corporate requirements. • Identification of key security KPIs. • Upload some sample rules 	<p>Goal of the day</p> <ul style="list-style-type: none"> • Implement selection of rules in SAP Solution Manager Configuration Validation. • Understand administrator interface and simple end user reporting interface. 	<p>Goal of the day</p> <ul style="list-style-type: none"> • Learn how to define a variety of dashboard elements and compare to corporate needs (maintenance vs consumer experience). 	<p>Goal of the day</p> <ul style="list-style-type: none"> • Final goal: strong understanding of dashboarding opportunities with a foundation to grow further based on SAP Security Baseline template and shared resources.

03 EGI – Security Optimization Service (SOS) as a Guided Self-Service

Public



Expert Guided Implementation

Guided Self-Services, Security Optimization Service (SOS)

How to perform a deep dive security analysis of SAP managed systems configured to your SAP Solution Manager?

The purpose of this EGI is to empower customers with the knowledge to perform a Security Optimization Session as a self-service via SAP Solution Manager.

In addition to giving an practical demonstrations of the updated guided procedures for analysing ABAP, JAVA, and SAP HANA Database-based systems, the EGI includes a practical approach to developing an Action Plan (including some of the top issues to watch for).

Further important tools to support a secure SAP environment are also covered (SAP EarlyWatch Alert Workspace, Security Notes/Hot Fix, System Recommendations).

The demo system used for the implementation is SAP Solution Manager 7.2 SP16.



SAP Security Optimization Service – Value Proposition

- The SAP Security Optimization Service (SOS) is designed to verify and improve the security of the SAP systems of customers by **identifying potential security issues** and **giving recommendations** on how to improve the security of the system.
- Keeping the security and availability of customer SAP solutions high is a tremendous value to customers businesses - a value delivered by the SAP Security Optimization Service.
- Analysis is the key to this value, which is necessary in order to:
 - Decrease the risk of a system intrusion
 - Ensure the confidentiality of business data
 - Ensure the authenticity of users
 - Substantially reduce the risk of costly downtime due to wrong user interaction
- More information can be found on the security landing page (under the alias SOS) in the SAP Support Portal
 - <https://support.sap.com/sos>

What is in it for me?

When?

- The best time – is now!
- Participating in this EGI again in the future is a great way to stay aware of new content and new resources.
 - New checks are being defined in the SOS
 - The features and capabilities of supporting security functionalities (SAP EarlyWatch Alert Workspace, and Security Notes etc.) will remain up to date.

See SCN Blog: <https://blogs.sap.com/2022/10/27/expert-guided-implementation-the-security-optimization-service-egi-simple-and-powerful/>

How does this EGI help make my life easier?



Clear outline of **pre-requisites** to ensure **seamless** positive experience.

- ABAP
- JAVA
- HANADB



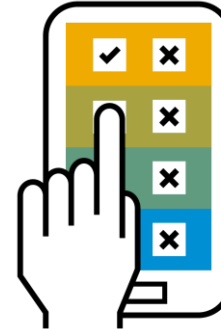
Deep dive analysis with hundreds of **automated** checks performed very **quickly**.

- Output identifies concrete findings with different risk potentials.
- Includes recommendations to mitigate risk.



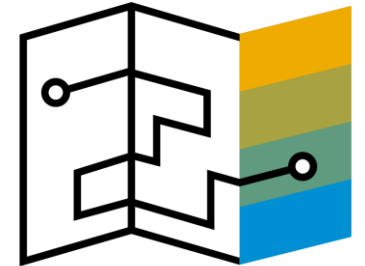
Easy to run any time

- Routinely, annually.
- Pre- and post-GoLive.
- Audit preparations.
- Major configuration changes.
- Incident follow-up.



Use optional **questionnaire** to sharpen risk analysis results:

- declare well-known risk-assessed and risk-accepted information.
- Define own set of user authorization checks to be automated.



Strategy for define a practicable **Action Plan**

- Top issues to watch out for.
- System issues – effective measures.
- Quick Wins!

Expert Guided Implementation Schedule

Guided Self-Services, Security Optimization for SAP Solution Manager 7.2

Day 1	Day 2	Day 3	Day 4
<p>Empowering lesson</p> <ul style="list-style-type: none"> • SAP expert explains preparation steps and show the fulfilment of prerequisites. • Value proposition for the SOS and underlying process flow. • Additionally, some recommendations important for the next days will be given. <p>(Web session, 1-2 h. in the morning)</p>	<p>Empowering lesson</p> <ul style="list-style-type: none"> • Execution of a basic SOS session for ABAP-based system with report generation. • Re-Execution of the SOS session utilizing optional Questionnaire with Report generation. • Review of data sets. <p>(Web session, 1-2 h. in the morning)</p>	<p>Empowering lesson</p> <ul style="list-style-type: none"> • Execution of the SOS session for Java-based systems. • Execution of the SOS session for SAP HANA-DB systems. • Accompanying tools: <ul style="list-style-type: none"> • SAP EarlyWatch Alert • SAP Security Notes Check • System Recommendations <p>(Web session, 1-2 h. in the morning)</p>	<p>Empowering lesson</p> <ul style="list-style-type: none"> • Navigating the SOS report. • Strategy to create an realistic action plan. • Top Issues to watch out for. <p>(Web session, 1-2 h. in the morning)</p>
<p>Execution by customer</p> <ul style="list-style-type: none"> • Check and fulfil prerequisites by customer in own system backed by on-demand expertise and support. <p>(Remote support in the afternoon)</p>	<p>Execution by customer</p> <ul style="list-style-type: none"> • Implementation by customer of process in own system. <p>(Remote support in the afternoon)</p>	<p>Execution by customer</p> <ul style="list-style-type: none"> • Implementation and testing by customer, in own system. • Gather experience with accompanying tools: EWA and System Recommendations. <p>(Remote support in the afternoon)</p>	<p>Execution by customer</p> <ul style="list-style-type: none"> • Review of own SOS reports and define appropriate Action Plan. <p>(Remote support in the afternoon)</p>
<p>Goal of the day</p> <ul style="list-style-type: none"> • Complete fulfillment of prerequisites. 	<p>Goal of the day</p> <ul style="list-style-type: none"> • Basic SOS preparation, execution completed. • Sample enhanced SOS functionalities, such as Questionnaire used correctly. 	<p>Goal of the day</p> <ul style="list-style-type: none"> • Execution of SOS reports in other technologies. • Understanding value of EarlyWatch Alert tool and System Recommendations. 	<p>Goal of the day</p> <ul style="list-style-type: none"> • Customer has a security optimization action plan. • Customer is able to repeat the SOS on demand.

04 EGI – SAP Solution Manager Roles and Authorizations Concept

Public



Expert Guided Implementation Roles & Authorization Concept for SAP Solution Manager 7.2

How to establish a suitable Authorization Concept for SAP Solution Manager?

The purpose of this EGI is to empower customers with the knowledge to implement an authorization concept for SAP Solution Manager.

In addition to giving an overview to the best-practice project-based approach to establishing an Authorization and Security strategy, the EGI includes practical demonstrations of authorization strategy implementation for three of the most common scenarios using an SAP Solution Manager 7.2 SP16 environment.

SAP Learning Hub Reference: EXPERT_LED
"Roles and Authorization Concept."

SUP_EDE_0080_1312



What is in it for me?

Why do this? You want to...

- Understanding of **fundamental** building blocks for defining an appropriate and well defined authorization concept and project implementation, or delta updates
- Empowerment of in-house team on **custom catalogs** and custom groups to create job-relevant launchpad content for internal users and groups.
- **Demonstration** of authorization concept for three integrated scenarios: Root Cause Analysis, Process Management, and IT Service Management.
- Direct remote access to SAP expert for any queries arising.

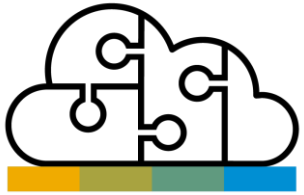
Target Group

- This 5-day EGI suits a Target Group:
 - Security, Compliance, Governance Teams
 - User Administrators
 - Authorization Administrators

Availability

- Continues to be available to support SAP Solution Manager

How does this EGI help make my life easier?



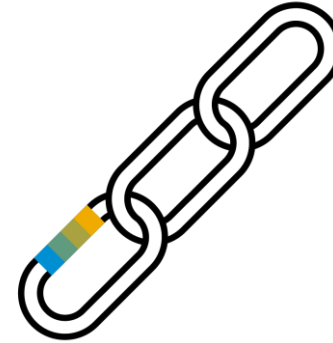
Provides strong **foundation** of roles, authorization and profile theory, including Segregation of Duties.



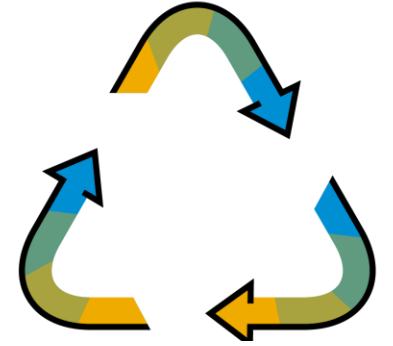
Provides **best practice project-based** approach to defining a strong authorization concept and security concept.



Showcases **custom** Catalogs and Custom Groups to support your end users.



Live demonstrations of project based approach in three most common **scenarios**, analogous to other scenarios.



Ability to repeat and roll out with **confidence**.

Expert Guided Implementation Schedule

Roles & Authorization Concept for SAP Solution Manager 7.2

Day 1	Day 2	Day 3	Day 4	Day 5
<p>Empowering lesson SAP expert explains preparation steps and show the fulfilment of prerequisites. Additionally, some recommendations important for the next days will be given.</p> <p>(Web session, 1-2 h. in the morning)</p>	<p>Empowering lesson SAP expert explains the Authorization Concept and the handling of standard roles in SAP Solution Manager 7.2. Additionally, the customizing of the Launchpad UI is introduced.</p> <p>(Web session, 1-2 h. in the morning)</p>	<p>Empowering lesson Set up and step-by-step implementation of an Authorization Concept for Root Cause Analysis.</p> <p>(Web session, 1-2 h. in the morning)</p>	<p>Empowering lesson Set-up and step-by-step implementation of an Authorization Concept for Process Management, esp. Solution Documentation.</p> <p>(Web session, 1-2 h. in the morning)</p>	<p>Empowering lesson Set-up and step-by-step implementation of an Authorization Concept for IT Service Management.</p> <p>(Web session, 1-2 h. in the morning)</p>
<p>Execution by customer Check and fulfil prerequisites by customer in own system backed by on-demand expertise and support.</p> <p>(Remote support in the afternoon)</p>	<p>Execution by customer Implementation and testing of own set up by customer in its own system.</p> <p>(Remote support in the afternoon)</p>	<p>Execution by customer Implementation and testing by customer, in own system.</p> <p>(Remote support in the afternoon)</p>	<p>Execution by customer Implementation and testing of own set up by customer in its own system.</p> <p>(Remote support in the afternoon)</p>	<p>Execution by customer Implementation and testing of own set up by customer in its own system.</p> <p>(Remote support in the afternoon)</p>
<p>Goal of the day</p> <ul style="list-style-type: none"> ■ Complete fulfillment of prerequisites. 	<p>Goal of the day</p> <ul style="list-style-type: none"> ■ Understanding of the Concept of Roles and Authorizations in the SAP Solution Manager. ■ Connection between Authorizations, Roles and UIs. ■ Launchpad Customizing. 	<p>Goal of the day</p> <ul style="list-style-type: none"> ■ Creation and Implementation of an Authorization Concept for Root Cause Analysis. ■ Final goal: Scenario are ready to use. 	<p>Goal of the day</p> <ul style="list-style-type: none"> ■ Creation and Implementation of an Role Concept for Solution Documentation. ■ Definition of specific Authorization Objects for special requirements. ■ Final goal: Scenario are ready to use. 	<p>Goal of the day</p> <ul style="list-style-type: none"> ■ Creation and Implementation of an Authorization Concept for IT Service Management. ■ Definition of specific Authorization Objects for special requirements. ■ Final goal: Scenario are ready to use.

05 Further Resources

Public



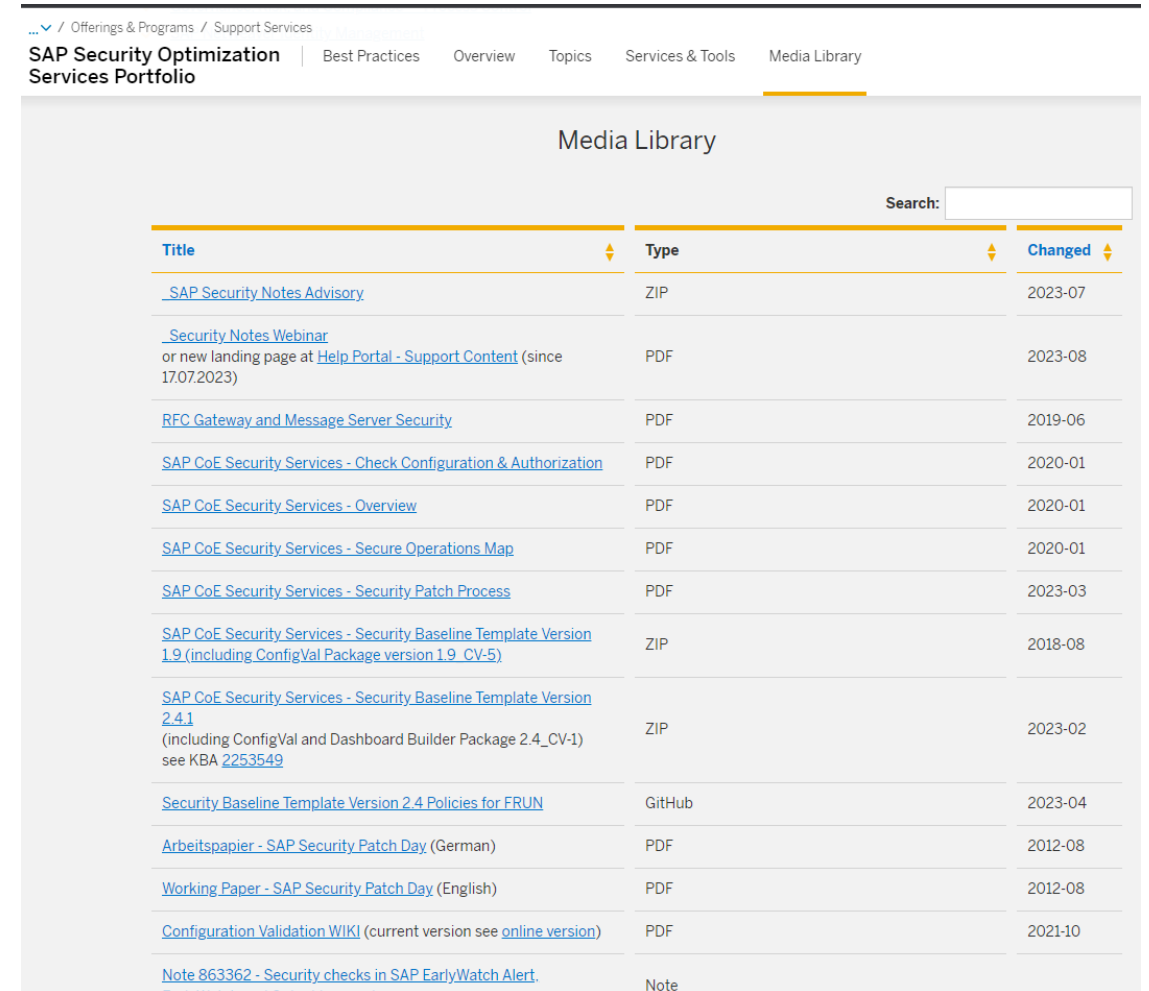
Security landing page on the SAP Support Portal

<https://support.sap.com/sos>

SAP Security Optimization Service Portfolio ensures smooth operation of your SAP solution by taking action proactively, before severe security problems occur.

Gives information on:

- [Security Overview](#)
- [Security Topics Area](#)
- [Security Services, Tools and Information](#)
- Media Library ← Excellent resources



... / Offerings & Programs / Support Services

SAP Security Optimization Services Portfolio | Best Practices Overview Topics Services & Tools Media Library

Media Library

Search:

Title	Type	Changed
SAP Security Notes Advisory	ZIP	2023-07
Security Notes Webinar or new landing page at Help Portal - Support Content (since 17.07.2023)	PDF	2023-08
RFC Gateway and Message Server Security	PDF	2019-06
SAP CoE Security Services - Check Configuration & Authorization	PDF	2020-01
SAP CoE Security Services - Overview	PDF	2020-01
SAP CoE Security Services - Secure Operations Map	PDF	2020-01
SAP CoE Security Services - Security Patch Process	PDF	2023-03
SAP CoE Security Services - Security Baseline Template Version 1.9 (including ConfigVal Package version 1.9 CV-5)	ZIP	2018-08
SAP CoE Security Services - Security Baseline Template Version 2.4.1 (including ConfigVal and Dashboard Builder Package 2.4_CV-1) see KBA 2253549	ZIP	2023-02
Security Baseline Template Version 2.4 Policies for FRUN	GitHub	2023-04
Arbeitspapier - SAP Security Patch Day (German)	PDF	2012-08
Working Paper - SAP Security Patch Day (English)	PDF	2012-08
Configuration Validation WIKI (current version see online version)	PDF	2021-10
Note 863362 - Security checks in SAP EarlyWatch Alert.	Note	

SAP Enterprise Support


Establish the foundation for your success


- We help you build the skills that drive innovation!
- The SAP Enterprise Support Academy provides expert guidance and high impact knowledge transfer services that enable you to innovate and be successful with your SAP solutions.
- At no additional cost.
- <https://support.sap.com/en/offerings-programs/enterprise-support/enterprise-support-academy.html>
- Don't miss out on the latest ES Academy news by [registering to the ES Academy newsletter](#).
- See SCN Blog: <https://blogs.sap.com/2023/07/24/sap-enterprise-support-academy-newsletter-august-2023/>


Click below to access the learning directly.


Access SAP Learning Hub


Quick Access

 [New and Popular Learning Courses](#)

 [Search Recommendations](#)

 [Regional Upcoming Live Sessions](#)

 [SAP Enterprise Support Academy Newsletter](#)

 [Subscribe](#) to our monthly newsletter

 [Read the latest newsletter issue](#)

SAP Enterprise Support Value Maps

Your fast lane to support expertise

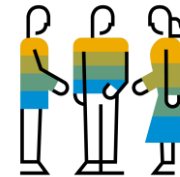
SAP Enterprise Support Value Maps – A structured and goal-based approach to quickly identify the relevant SAP Enterprise Support services, tools and offerings to achieve defined targets and address your business needs. In addition, leverage the in-depth knowledge of our **support advisory team** for personal guidance based on 45+ years of close customer engagements.



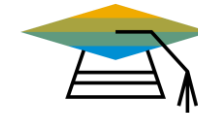
Guided approach
to reach your objective



Social collaboration
to connect directly with
SAP experts and peers



Expert access
to obtain guidance from
SAP support experts



Empowerment
to build the knowledge
and skills you need















Available Value Maps

>> [Sign up](#)

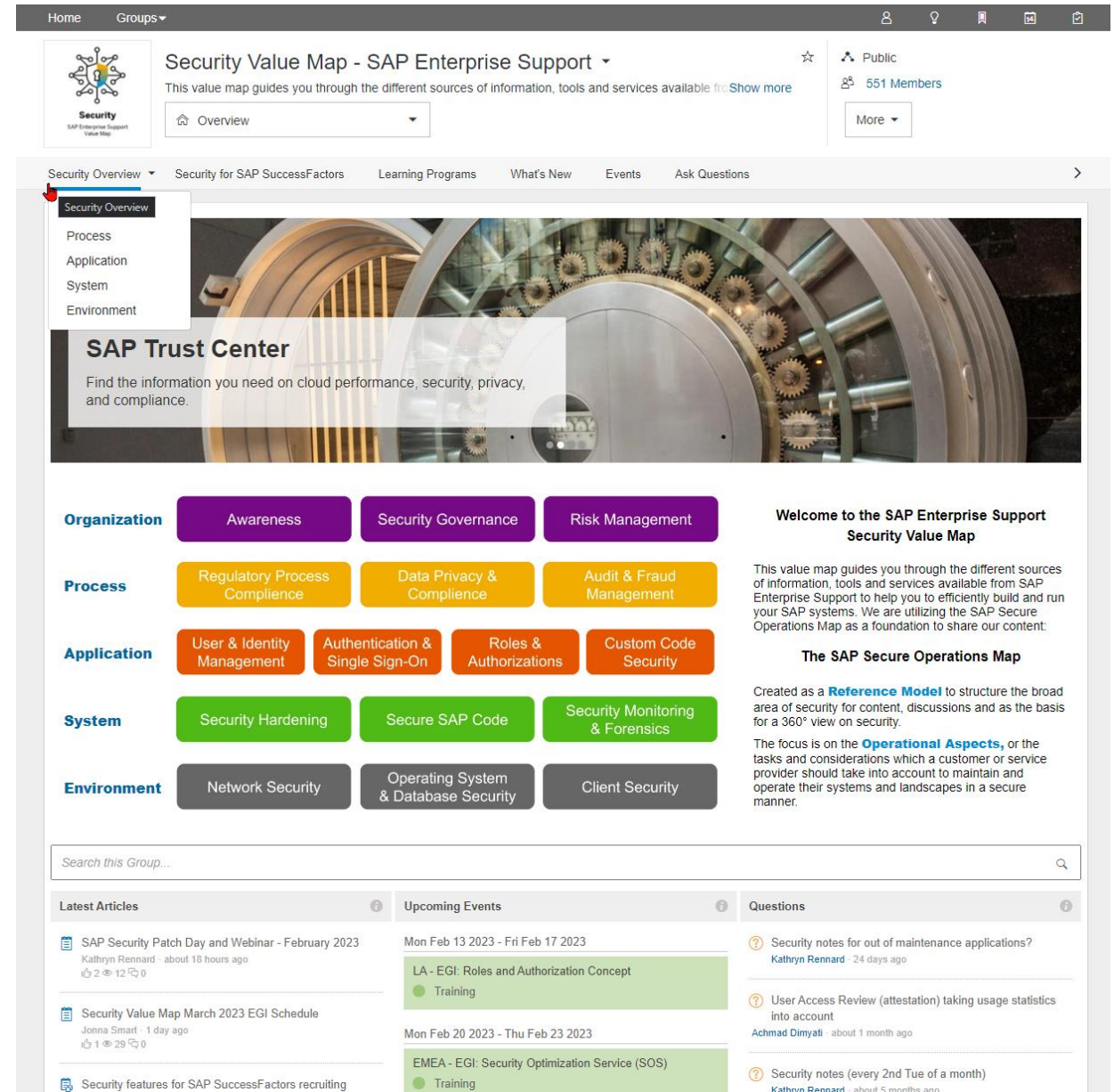
SAP S/4HANA On Premise	SAP S/4HANA Cloud	Digital Innovation	SAP SuccessFactors	SAP Jam Collaboration	SAP Analytics Solutions	Security	Business Process Improvement	Data Volume Management	Lifecycle Management
------------------------	-------------------	--------------------	--------------------	-----------------------	-------------------------	----------	------------------------------	------------------------	----------------------

Security Value Map SAP Enterprise Support

Select a value map

 SAP S/4HANA	 SAP Business Technology Platform
 SAP S/4HANA Cloud, public edition	 SAP Analytics Solutions
 SAP S/4HANA Cloud, private edition	 Data Volume Management
 SAP Digital Supply Chain New	 Business Process Transformation
 SAP SuccessFactors HXM Suite	 Application Lifecycle Management
 SAP Customer Experience solutions	 Business Process Improvement
 SAP Ariba	 Security

<https://support.sap.com/en/offerings-programs/enterprise-support/enterprise-support-academy/value-maps.html>



Home Groups

Security Value Map - SAP Enterprise Support

This value map guides you through the different sources of information, tools and services available for: [Show more](#)

Overview

Public 551 Members

More

Security Overview

Security for SAP SuccessFactors Learning Programs What's New Events Ask Questions

Security Overview

Process

Application

System

Environment

SAP Trust Center

Find the information you need on cloud performance, security, privacy, and compliance.

Organization

- Awareness
- Security Governance
- Risk Management

Process

- Regulatory Process Compliance
- Data Privacy & Compliance
- Audit & Fraud Management

Application

- User & Identity Management
- Authentication & Single Sign-On
- Roles & Authorizations
- Custom Code Security

System

- Security Hardening
- Secure SAP Code
- Security Monitoring & Forensics

Environment

- Network Security
- Operating System & Database Security
- Client Security

Welcome to the SAP Enterprise Support Security Value Map

This value map guides you through the different sources of information, tools and services available from SAP Enterprise Support to help you to efficiently build and run your SAP systems. We are utilizing the SAP Secure Operations Map as a foundation to share our content.

The SAP Secure Operations Map

Created as a **Reference Model** to structure the broad area of security for content, discussions and as the basis for a 360° view on security.

The focus is on the **Operational Aspects**, or the tasks and considerations which a customer or service provider should take into account to maintain and operate their systems and landscapes in a secure manner.

Search this Group...

Latest Articles

- SAP Security Patch Day and Webinar - February 2023
Kathryn Rennard · about 18 hours ago
2 12 0
- Security Value Map March 2023 EGI Schedule
Jonna Smart · 1 day ago
1 29 0
- Security features for SAP SuccessFactors recruiting

Upcoming Events

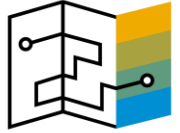
- Mon Feb 13 2023 - Fri Feb 17 2023
- LA - EGI: Roles and Authorization Concept
Training
- Mon Feb 20 2023 - Thu Feb 23 2023
- EMEA - EGI: Security Optimization Service (SOS)
Training

Questions

- Security notes for out of maintenance applications?
Kathryn Rennard · 24 days ago
- User Access Review (attestation) taking usage statistics into account
Achmad Dimiyati · about 1 month ago
- Security notes (every 2nd Tue of a month)
Kathryn Rennard · about 5 months ago

Three simple steps to register

<https://support.sap.com/valuemaps>



Step 1

Click on '[Sign Up](#)' to request access to join a Value Map

Step 2

Provide your 'Contact Details'

Step 3

Choose 'Value Map topic' and 'objectives'.

Click on 'Next' & 'Finish'

Useful Links

SAP Security

- SAP Security landing page on SAP Support Portal (no login required, public page)
<https://support.sap.com/sos> → Media Library
- Background information and the current download link to the SAP Security Baseline Template can be found in SAP Note [2253549 – the SAP Security Baseline Template](#),
or using the following path: <https://support.sap.com/sos> → Media Library → SAP Security Baseline Template (zip file).
- General SAP Security queries (e.g. SAP Security Baseline template) SecurityCheck@sap.com and component XX-SER-SECCHK.

SAP Enterprise Support Value Map for Security

- The SAP Enterprise Support Value Maps Learning Room platform
<https://support.sap.com/en/offering-programs/enterprise-support/enterprise-support-academy/valuemaps.html>
- One-time registration for SAP Learning Hub, edition for SAP Enterprise Support, is required. <https://support.sap.com/en/offering-programs/enterprise-support/enterprise-support-academy/learn.html>



Call to action

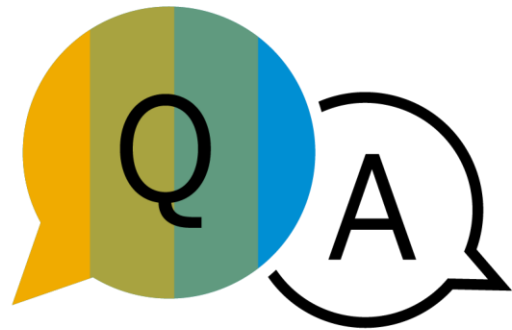
- Add security landing page to your favourite bookmarks <https://support.sap.com/sos>.
- Stay tuned for new security-related offerings:
 - Join the SAP Enterprise Support Value Map for Security
 - Subscribe to the SAP Enterprise Support Newsletter
- Register for our EGIs
 - and we look forward to seeing you there.



06 Questions and Answers

Public





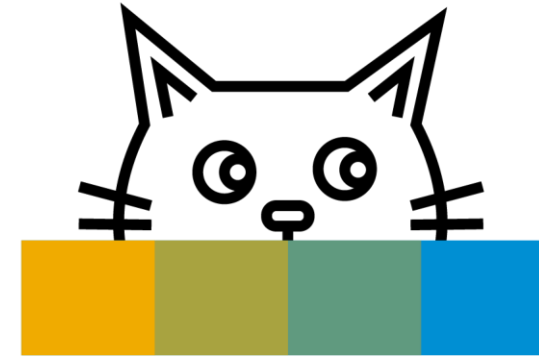
Thank you.

Contact information:

Victoria Carroll

Senior Support Engineer and Service Developer for Security
Data Science, Automation & Technology (DSAT)
Adoption Services Center BTP Hub
Customer Success | Cloud Success Services
SAP SSC (Ireland) Ltd.

victoria.carroll@sap.com



Contact information:

SAP Enterprise Support Academy

SAP_ES_Academy@sap.com

(via SAP Universal ID)

Follow us



www.sap.com/contactsap

© 2023 SAP SE or an SAP affiliate company. All rights reserved.

No part of this publication may be reproduced or transmitted in any form or for any purpose without the express permission of SAP SE or an SAP affiliate company.

The information contained herein may be changed without prior notice. Some software products marketed by SAP SE and its distributors contain proprietary software components of other software vendors. National product specifications may vary.

These materials are provided by SAP SE or an SAP affiliate company for informational purposes only, without representation or warranty of any kind, and SAP or its affiliated companies shall not be liable for errors or omissions with respect to the materials. The only warranties for SAP or SAP affiliate company products and services are those that are set forth in the express warranty statements accompanying such products and services, if any. Nothing herein should be construed as constituting an additional warranty.

In particular, SAP SE or its affiliated companies have no obligation to pursue any course of business outlined in this document or any related presentation, or to develop or release any functionality mentioned therein. This document, or any related presentation, and SAP SE's or its affiliated companies' strategy and possible future developments, products, and/or platforms, directions, and functionality are all subject to change and may be changed by SAP SE or its affiliated companies at any time for any reason without notice. The information in this document is not a commitment, promise, or legal obligation to deliver any material, code, or functionality. All forward-looking statements are subject to various risks and uncertainties that could cause actual results to differ materially from expectations. Readers are cautioned not to place undue reliance on these forward-looking statements, and they should not be relied upon in making purchasing decisions.

SAP and other SAP products and services mentioned herein as well as their respective logos are trademarks or registered trademarks of SAP SE (or an SAP affiliate company) in Germany and other countries. All other product and service names mentioned are the trademarks of their respective companies.

See www.sap.com/copyright for additional trademark information and notices.