

# SAP Integration Suite Monthly Updates – August 2023

Product Management Team & Guests, SAP Integration Suite  
August 29, 2023

Public



# Disclaimer

The information in this presentation is confidential and proprietary to SAP and may not be disclosed without the permission of SAP. Except for your obligation to protect confidential information, this presentation is not subject to your license agreement or any other service or subscription agreement with SAP. SAP has no obligation to pursue any course of business outlined in this presentation or any related document, or to develop or release any functionality mentioned therein.

This presentation, or any related document and SAP's strategy and possible future developments, products and or platforms directions and functionality are all subject to change and may be changed by SAP at any time for any reason without notice. The information in this presentation is not a commitment, promise or legal obligation to deliver any material, code or functionality. This presentation is provided without a warranty of any kind, either express or implied, including but not limited to, the implied warranties of merchantability, fitness for a particular purpose, or non-infringement. This presentation is for informational purposes and may not be incorporated into a contract. SAP assumes no responsibility for errors or omissions in this presentation, except if such damages were caused by SAP's intentional or gross negligence.

All forward-looking statements are subject to various risks and uncertainties that could cause actual results to differ materially from expectations. Readers are cautioned not to place undue reliance on these forward-looking statements, which speak only as of their dates, and they should not be relied upon in making purchasing decisions.

# Agenda

- Upgrade to new version of third party connectors
- Cloud Integration
- Integration Flow Design Guidelines
- Cloud Connector
- Q & A



# **SAP Integration Suite**

# Action required: Move previous non-SAP adapters to new adapter versions

As per [SAP note 3001980](#) the following previous adapter versions are deprecated since December 31<sup>st</sup>, 2020:

- Salesforce, Amazon Web Services, Microsoft Dynamics, SugarCRM

There haven't been any new features or enhancements for these previous adapter versions.

**As of January 1<sup>st</sup>, 2024, the previous adapter versions will no longer run.**

## Action required

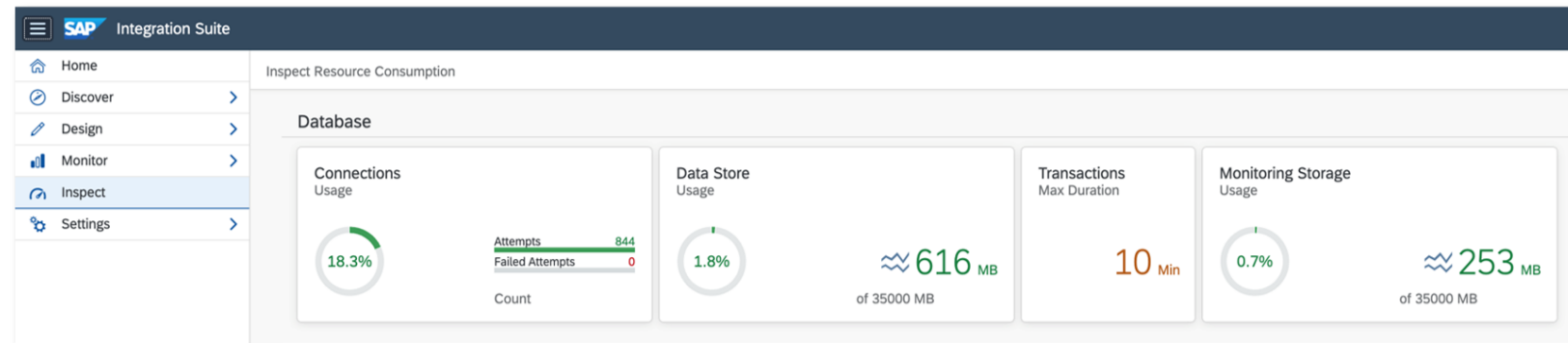
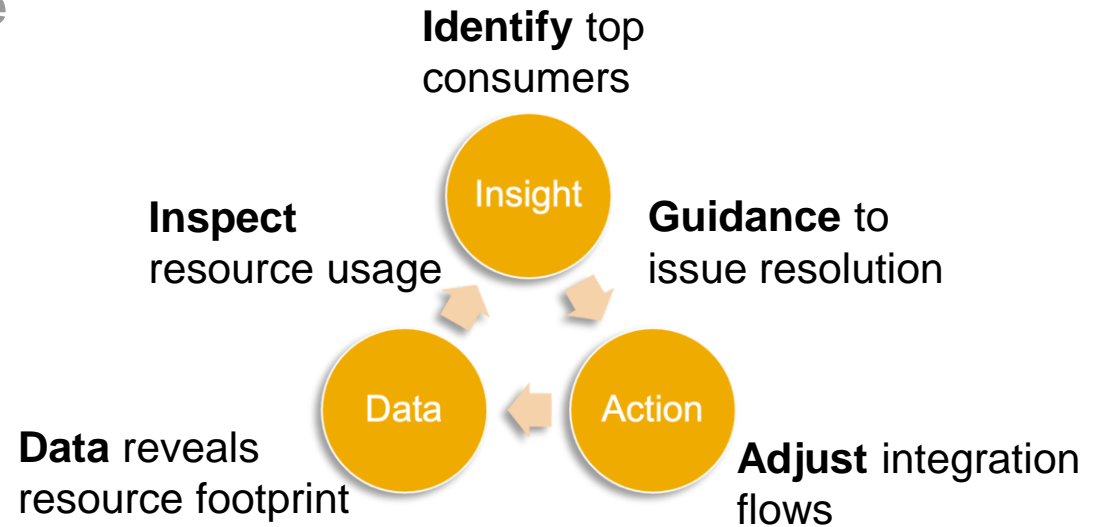
- Option 1: Migrate to updated new adapter versions and benefit from multiple new features
  - Migration support documented in [SAP Work Zone](#), e. g. [Salesforce adapter](#), [Amazon Web Services adapter](#)
  - Request access to [SAP Work Zone](#) at Annemarie Kiefer ([annemarie.kiefer@sap.com](mailto:annemarie.kiefer@sap.com))
  - SAP offers tips and tricks
  - Rojo Consultancy as the adapter expert offers consultancy services. Fees apply.
  - For further question and support, open a ticket on the “LOD-HCI-PI-CON-TPRO” component, subject: “Help with upgrading to the OEM adapters”
- Option 2: Purchase new Advantco adapter versions from Advantco with support from Advantco only
- For both options: Delete integration flows using the adapters that are no longer in use and undeploy adapters

# Cloud Integration

# Inspect Resource Usage

## Extended with Monitoring Storage Database

- **Empower customers** to control resource utilization by their integration flows
- **Common use cases**
  - Resource overview at a glance,
  - Troubleshooting bottlenecks
  - Identify trends in integration flows
- You can now inspect usage of the monitoring storage database for a given time period.
- At runtime, monitoring data is written to a database. For each integration flow processed at runtime, a message processing log is written that contains information about the processing steps (see [Message Processing Log](#)).



# SFTP JSch Library Update

To connect to an SFTP server in Java, we will use the JSch library. JSch is a Java implementation of SSH2.

The new release supports several more recent algorithms and stops using deprecated ones.

For backward compatibility with older SFTP servers, you can still enable using several deprecated algorithms for SFTP polling.

For more information on compatibility and support, see SAP KBA [3079510](#)

See:

[Configure the SFTP Sender Adapter](#)

[Configure the SFTP Sender Adapter Used with the Poll Enrich Step](#)

[Configure the SFTP Receiver Adapter](#)



# Other Updates

- The maximum size of the binary parameter for the Partner Directory has been increased to 1.5 MB.  
See: [Partner Directory](#)
- The existing **ES Repository** tab under **Settings** is renamed as **System**.  
The setting is improved so that you can:
  - connect to more than one SAP Process Orchestration systems
  - test the connection to all configured SAP Process Orchestration systems from one place
  - avoid creating destinations in SAP BTP subaccount which now SAP Integration Suite takes care

See: [Importing Content from SAP Process Orchestration System](#)

# **Integration Flow Design Guidelines Update**

# New integration flow design guidelines for handling Exactly Once delivery

6 new guidelines handling Exactly Once delivery for IDoc and XI receiver

- EO for IDoc receiver in case sender can restart based on unique ID in header
- EO for IDoc receiver in case sender can restart based on unique ID in payload
- EO for IDoc receiver in case sender can not restart
- EO for XI receiver in case sender can restart based on unique ID in header
- EO for XI receiver in case sender can restart based on unique ID in payload
- EO for XI receiver in case sender can not restart

Overview documentation of special use cases: SAP RM vs XI vs IDoc

# Sample scenario with sender retry and idempotent IDoc receiver

The screenshot displays the SAP Integration Suite interface for an integration process named "Scenario 01a with sender retry and idempotent IDoc receiver". The process flow is as follows:

- Sender** (SOAP) connects to a **Start** event.
- The **Start** event triggers the **Set SapMessageld** action.
- The **Set SapMessageld** action is followed by the **Map to IDoc** action.
- The **Map to IDoc** action leads to the **Set IDoc header** action.
- The **Set IDoc header** action leads to an **End** event.
- The **End** event connects to the **Receiver** (IDOC).

The **Content Modifier** panel is open to the **Message Header** tab. The configuration table below shows the details for the **Set SapMessageld** action:

Action	Name	Source Type	Source Value	Data Type	Default Value
Create	SapMessageld	Header	SapMessageldEx		

# Sample scenario with sender retry and idempotent XI receiver

The screenshot displays the SAP Integration Suite interface for a scenario named "Pattern Quality Of Service - Scenario 01b". The scenario is currently "Not Deployed". The main diagram shows an integration process flow: a "Sender" connects via "SOAP" to a "Start" node, followed by "Keep order header", "Filter items", and "Combine all pieces" steps, leading to an "End" node. This process then connects to a "Receiver". The "End" node has a warning icon, and the connection to the "Receiver" has a red 'X' icon, indicating a configuration issue.

Below the diagram, the "XI" configuration panel is visible, with the "Delivery Assurance" tab selected. The "DELIVERY ASSURANCE PARAMETERS" section includes the following settings:

- XI Message ID Determination: Reuse (highlighted with a red box)
- Quality Of Service: Exactly Once
- Temporary Storage: Data Store

# Cloud Connector

# Cloud Connector 2.16.0 is released

- New platforms (Oracle Linux 9 and macOS aarch64)
- ABAP cloud SNC support
- Login via client certificate (restriction for installations without shadow)
- Logging and monitoring enhanced
  - More insights for TCP and TCP SSL connections
  - Audit log can be exported as csv file
- Lots of internal updates

More information: <https://blogs.sap.com/2023/08/07/next-release-of-the-cloud-connector-is-available-2.16.0/>

# What is #AskAnythingIntegration?

Provides a platform for customers, partners, consultants, and participants to ask their most important and top priority questions and get them answered by the panel of experts.

- Questions can be sent upfront or posted directly in the call
- Questions and answers will then be published as a public FAQ document with regular updates and additions

**Panel of Experts:** Speakers of the monthly webinar + product Management team

**Schedule:** Runs every alternate month

**Duration:** 20 mins

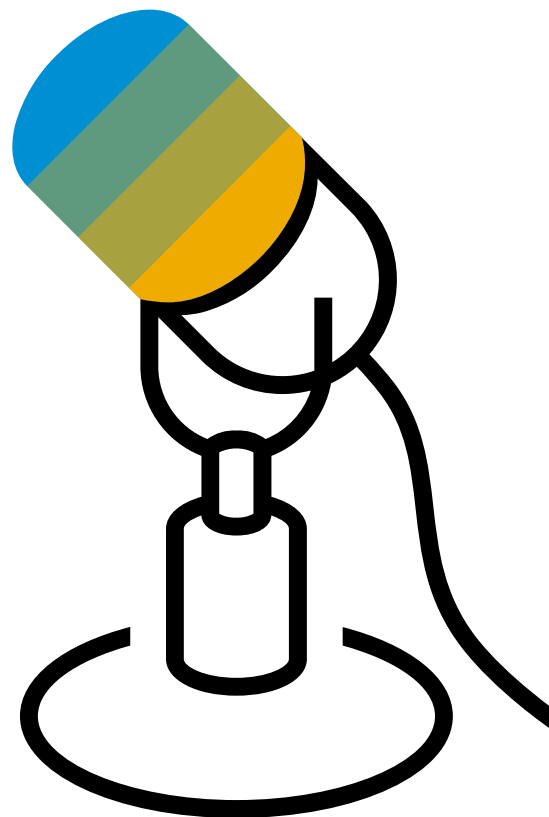
**Moderator:** Palak (palak.garg@sap.com)

*Note: “Interact with #IntegrationBlackBelt” section will transition to alternate months.*





**Q & A**



**Thank you.**

Follow us



[www.sap.com/contactsap](http://www.sap.com/contactsap)

© 2023 SAP SE or an SAP affiliate company. All rights reserved.

No part of this publication may be reproduced or transmitted in any form or for any purpose without the express permission of SAP SE or an SAP affiliate company.

The information contained herein may be changed without prior notice. Some software products marketed by SAP SE and its distributors contain proprietary software components of other software vendors. National product specifications may vary.

These materials are provided by SAP SE or an SAP affiliate company for informational purposes only, without representation or warranty of any kind, and SAP or its affiliated companies shall not be liable for errors or omissions with respect to the materials. The only warranties for SAP or SAP affiliate company products and services are those that are set forth in the express warranty statements accompanying such products and services, if any. Nothing herein should be construed as constituting an additional warranty.

In particular, SAP SE or its affiliated companies have no obligation to pursue any course of business outlined in this document or any related presentation, or to develop or release any functionality mentioned therein. This document, or any related presentation, and SAP SE's or its affiliated companies' strategy and possible future developments, products, and/or platforms, directions, and functionality are all subject to change and may be changed by SAP SE or its affiliated companies at any time for any reason without notice. The information in this document is not a commitment, promise, or legal obligation to deliver any material, code, or functionality. All forward-looking statements are subject to various risks and uncertainties that could cause actual results to differ materially from expectations. Readers are cautioned not to place undue reliance on these forward-looking statements, and they should not be relied upon in making purchasing decisions.

SAP and other SAP products and services mentioned herein as well as their respective logos are trademarks or registered trademarks of SAP SE (or an SAP affiliate company) in Germany and other countries. All other product and service names mentioned are the trademarks of their respective companies.

See [www.sap.com/copyright](http://www.sap.com/copyright) for additional trademark information and notices.