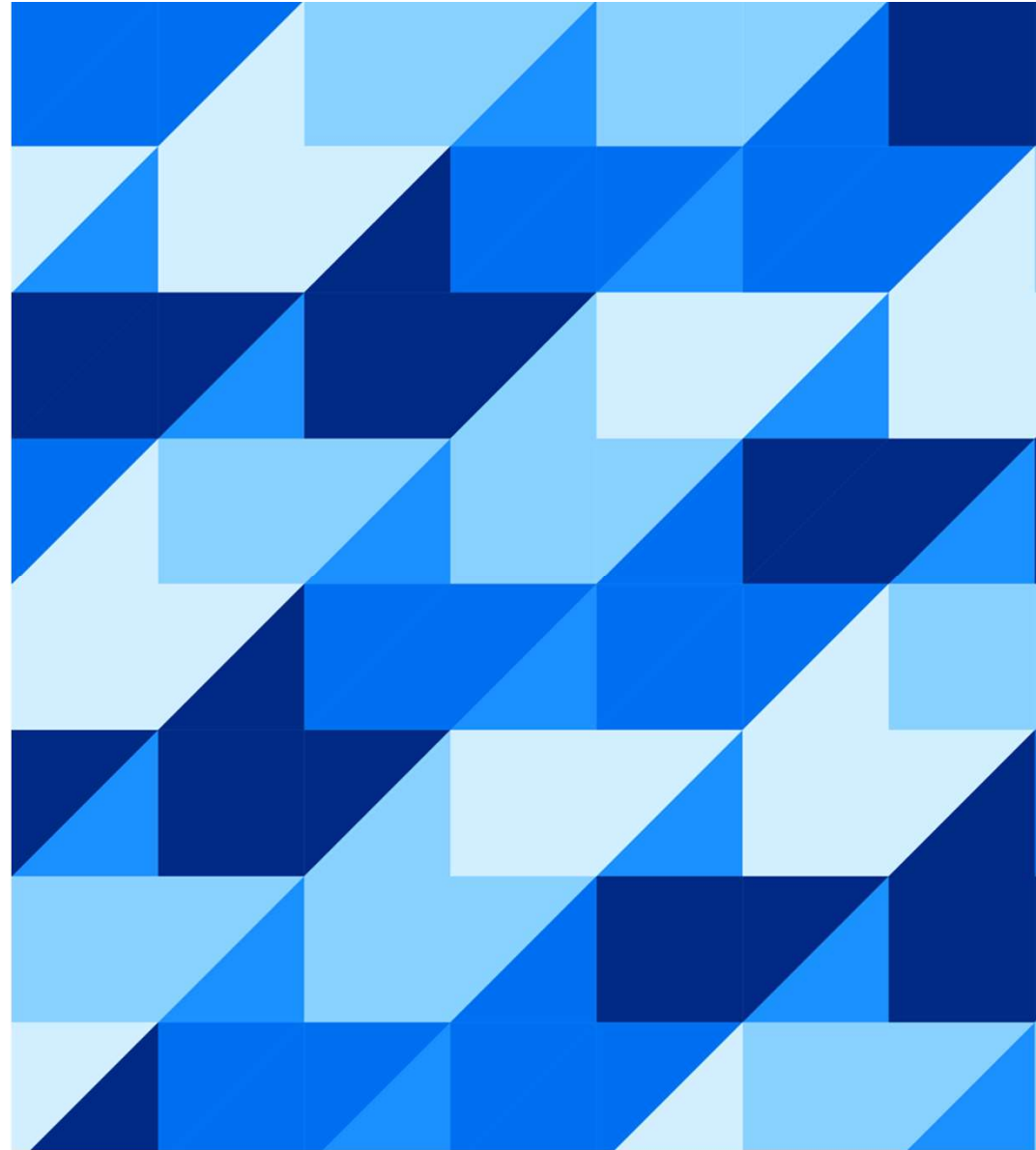




How to handle Data Privacy and Protection with SAP Information Lifecycle Management?

Karina Ertel, Yizhou Li, SAP
December 14, 2023

Public



Disclaimer

SAP does not provide legal advice. The following presentation is only about technical features which might help a customer to become compliant with data protection regulations.

In this presentation we do not assess which of our customers' IT processes are subject to the EU General Data Protection Regulation.

The EU General Data Protection Regulation (GDPR) became effective as of May 25, 2018. As a consequence, penalties of up to 4 % of a company's annual revenue (or €20 million, whatever is higher) are possible.

Agenda

WHY is data privacy and protection important for your organization?

WHAT is the ILM solution and how does it help you?

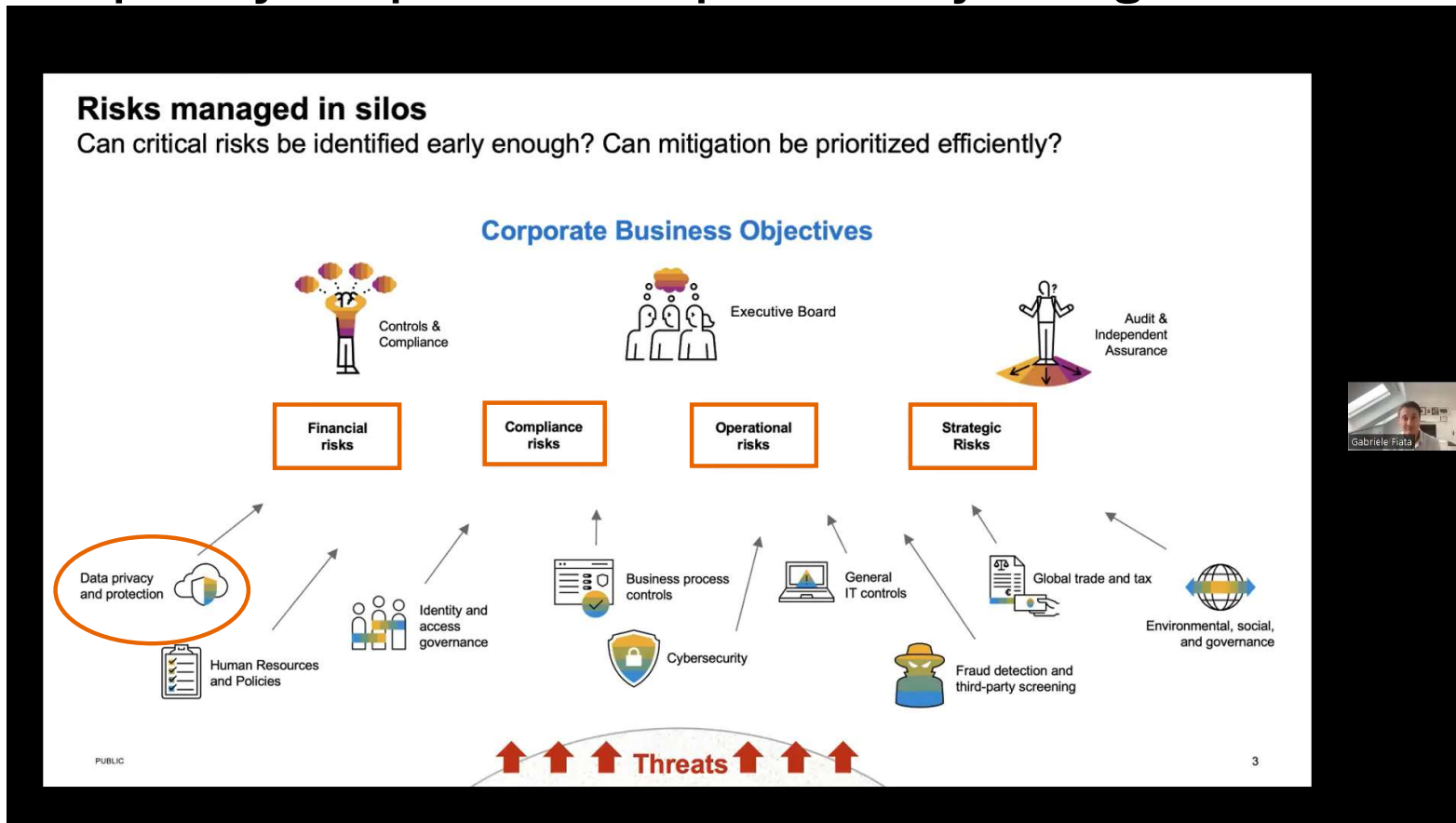
HOW could ILM typically be implemented?

DEMO

QUESTION & ANSWERS

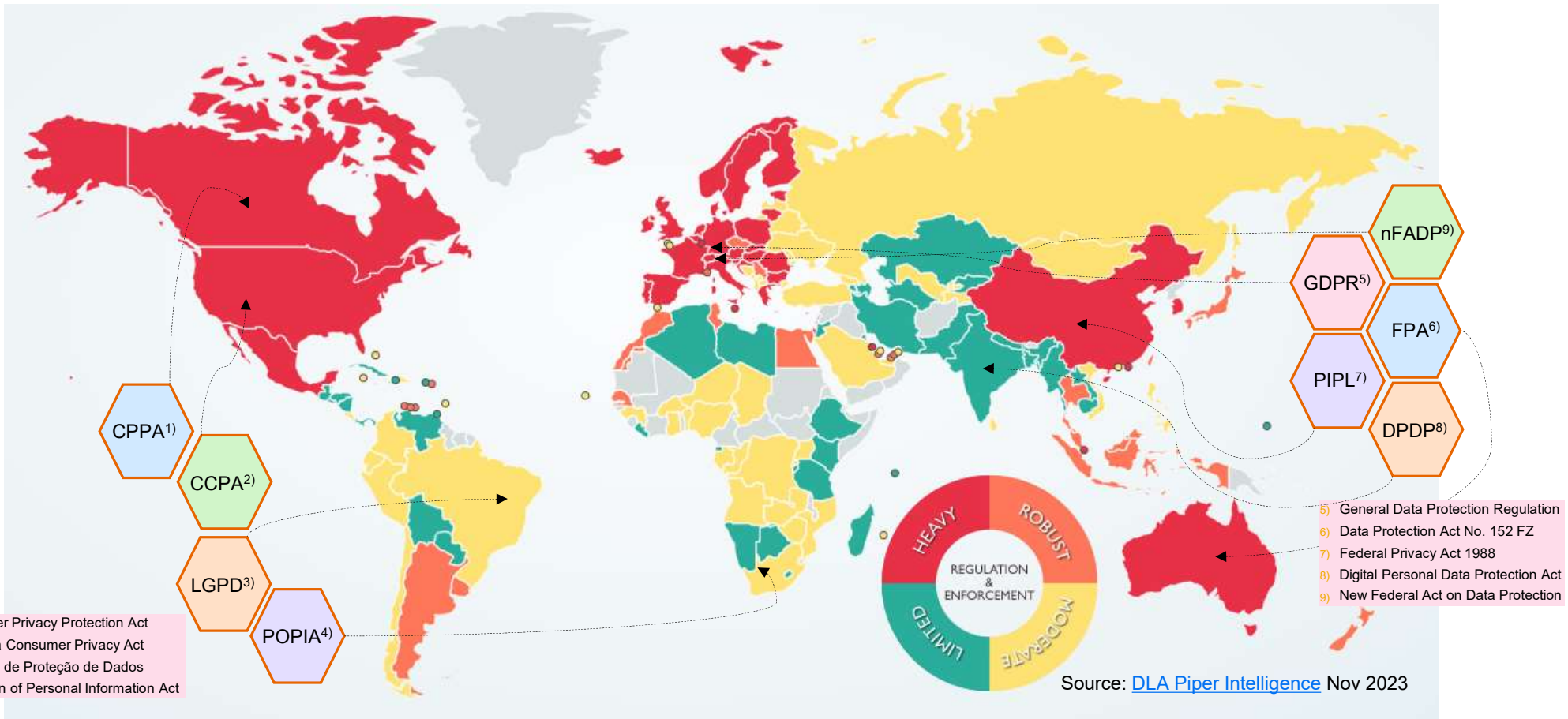
Why is Data Privacy and Protection important for your organization?

Why is Data privacy and protection important for your organization?

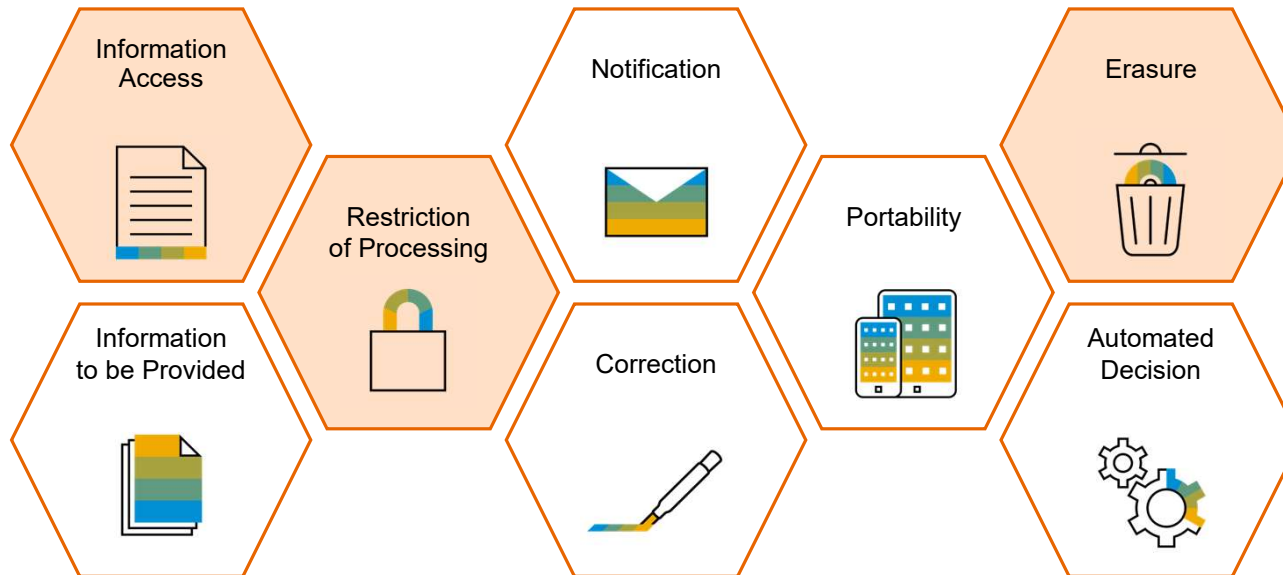


SAP Security Webcast in October

Data Privacy and Data Compliance Regulations Conquers the World...



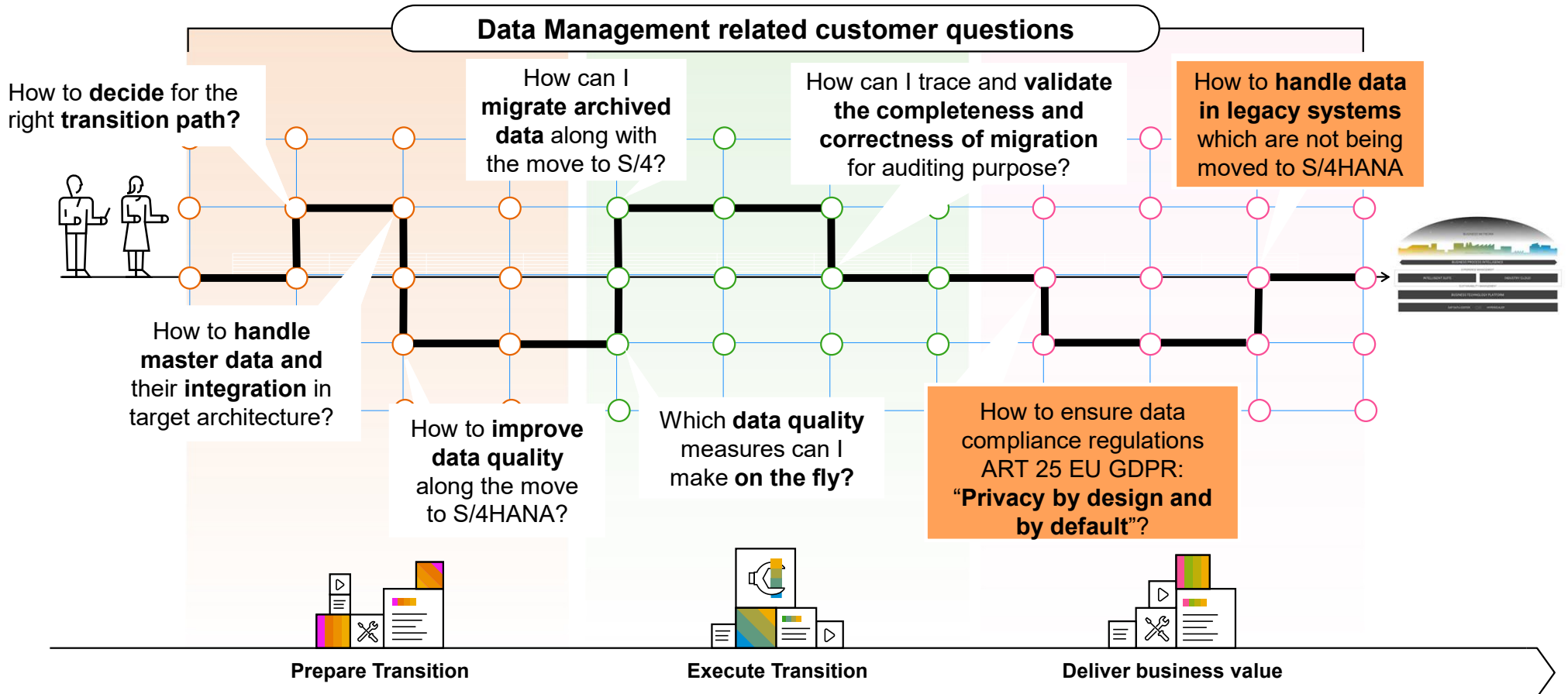
What is required by GDPR & When those requirements have to be fulfilled



“Erasure” and “Restriction of Processing” are also commonly known as “right to be forgotten”: individuals have the right to obtain from the controller the erasure of personal data concerning him or her

“Information Access”: individuals have the right to get information about whether their personal data are collected and how (under what purpose) their personal data are processed.

Some Customer Challenges along the Move to S/4HANA



What is the ILM solution and how does it help you?

What is Information Lifecycle Management?

SAP Information Lifecycle Management (SAP ILM) enhances the SAP standard delivery with the ability to manage the lifecycle of live and archived data based on rules to cope with data protection and data retention regulations.

SAP ILM covers below key business scenarios:

- **Retention management functions** enables rule-based data archiving and data destruction for transactional documents.
- **Simplified blocking and deletion feature** provides functions to evaluate the lifecycle of personal master data and to destruct personal master data when there is no further purpose to keep the data in the system.
- Retention warehouse provides a cost-effective solution to manage legacy systems, which will be decommissioned.

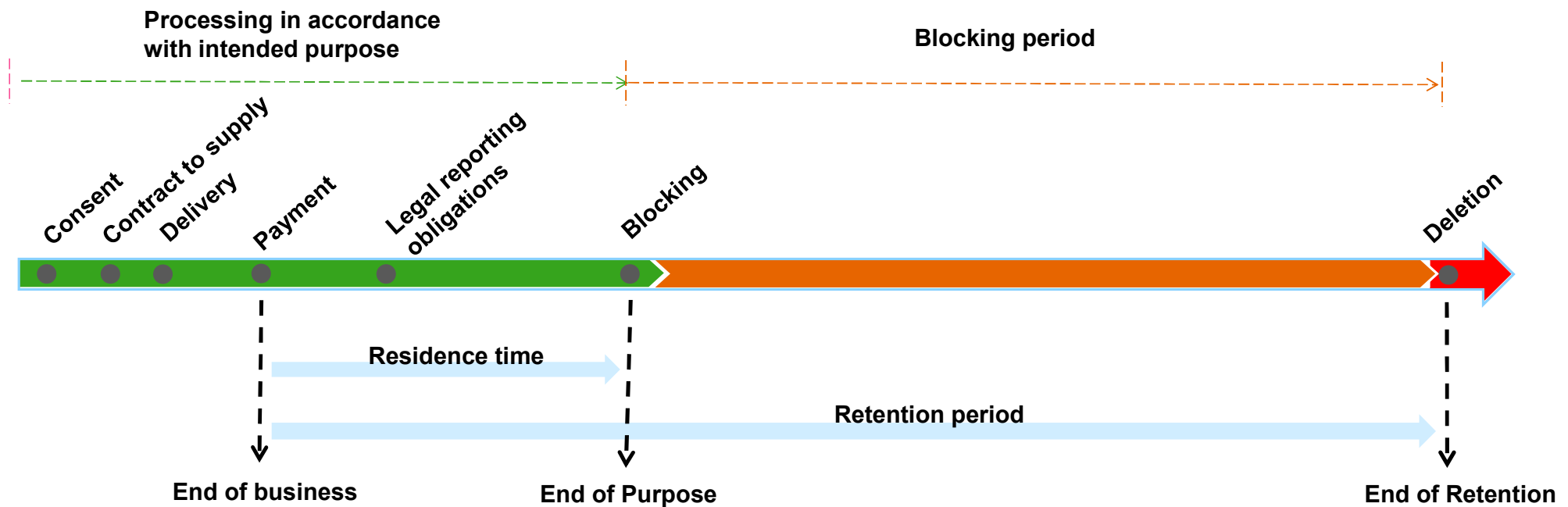
SAP ILM is available in S/4HANA, S/4HANA cloud and other systems on SAP Netweaver.

To use SAP ILM for data protection, please check the release recommendation ([OSS note 2590321](#)).

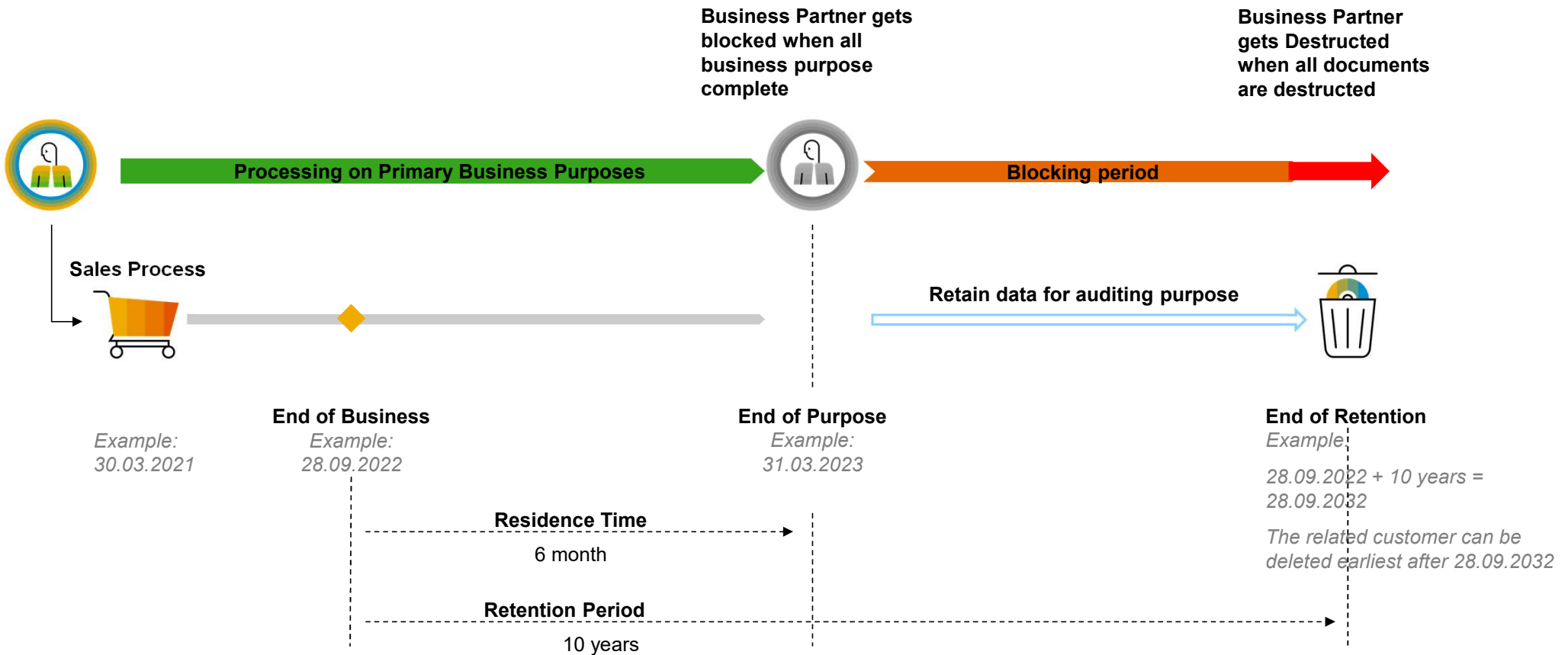
Data lifecycle of personal master data

Requirement:

Personal data, for which the original processing purpose has ended, is to be deleted. If other retention requirements apply, the personal data is to be blocked until its final deletion.

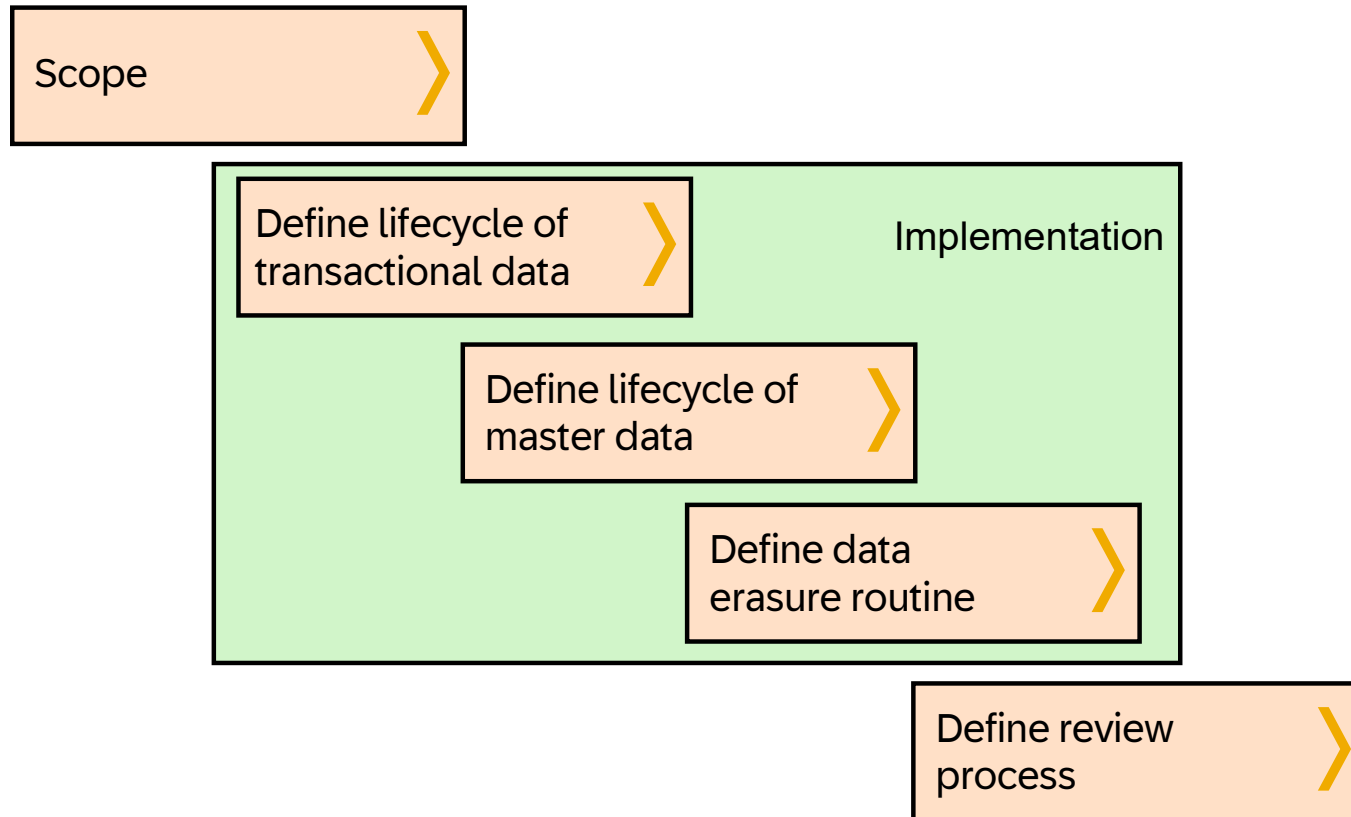


Data lifecycle of personal master data - Example

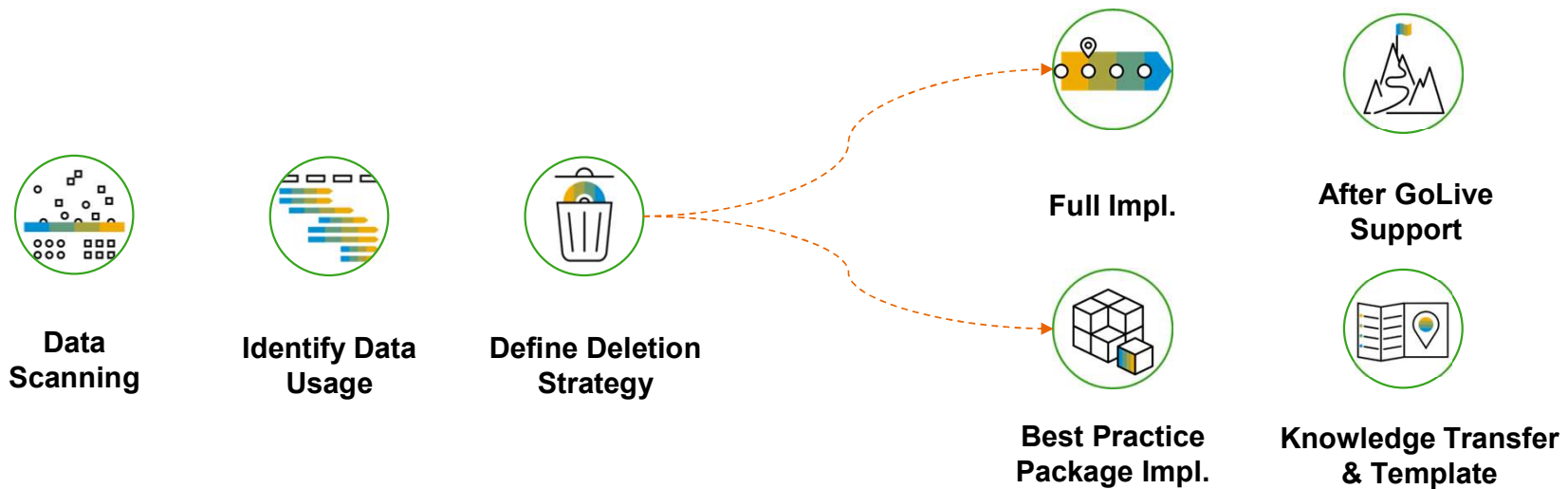


How could ILM typically be implemented?

How can ILM be implemented?



DMLT offers service with Analysis & Implementation



Analysis Service with focus of GDPR

- Scan customers system (non-BW, non-HCM) to **identify relevant personal data** (data subjects) and the **transactional data** (data usage)
- Provide advise of personal data **deletion strategy**
- Provide **effort estimation** of implementation project

Implementation with Best Practice Package

- Implement the solution with **predefined scope** in the sandbox
- Set up a **working environment** in the sandbox
- Create **templates** for further implementation
- **Enable customer** with knowledge & methodology

Demo

Questions & Answers

Thank you.

Contact information:

SAP DMLT Global Customer Engagement
Sap_dmlt_gce@sap.com

