



SAP BusinessObjects BI Platform Support Tool 2.1

Toby Johnston, SAP

Disclaimer

The information in this presentation is confidential and proprietary to SAP and may not be disclosed without the permission of SAP. Except for your obligation to protect confidential information, this presentation is not subject to your license agreement or any other service or subscription agreement with SAP. SAP has no obligation to pursue any course of business outlined in this presentation or any related document, or to develop or release any functionality mentioned therein.

This presentation, or any related document and SAP's strategy and possible future developments, products and or platforms directions and functionality are all subject to change and may be changed by SAP at any time for any reason without notice. The information in this presentation is not a commitment, promise or legal obligation to deliver any material, code or functionality. This presentation is provided without a warranty of any kind, either express or implied, including but not limited to, the implied warranties of merchantability, fitness for a particular purpose, or non-infringement. This presentation is for informational purposes and may not be incorporated into a contract. SAP assumes no responsibility for errors or omissions in this presentation, except if such damages were caused by SAP's intentional or gross negligence.

All forward-looking statements are subject to various risks and uncertainties that could cause actual results to differ materially from expectations. Readers are cautioned not to place undue reliance on these forward-looking statements, which speak only as of their dates, and they should not be relied upon in making purchasing decisions.

In this session

- You will learn how supportability tools such as the BI Platform Support Tool will help you to resolve issues faster, prevent outages, and lower your TCO
- Gain an understanding of the new features and functionality included in the new BI Platform Support Tool 2.1
- See the new functionality in action via live demo
- Be prepared to utilize the new version's capabilities in your BI environment

Agenda

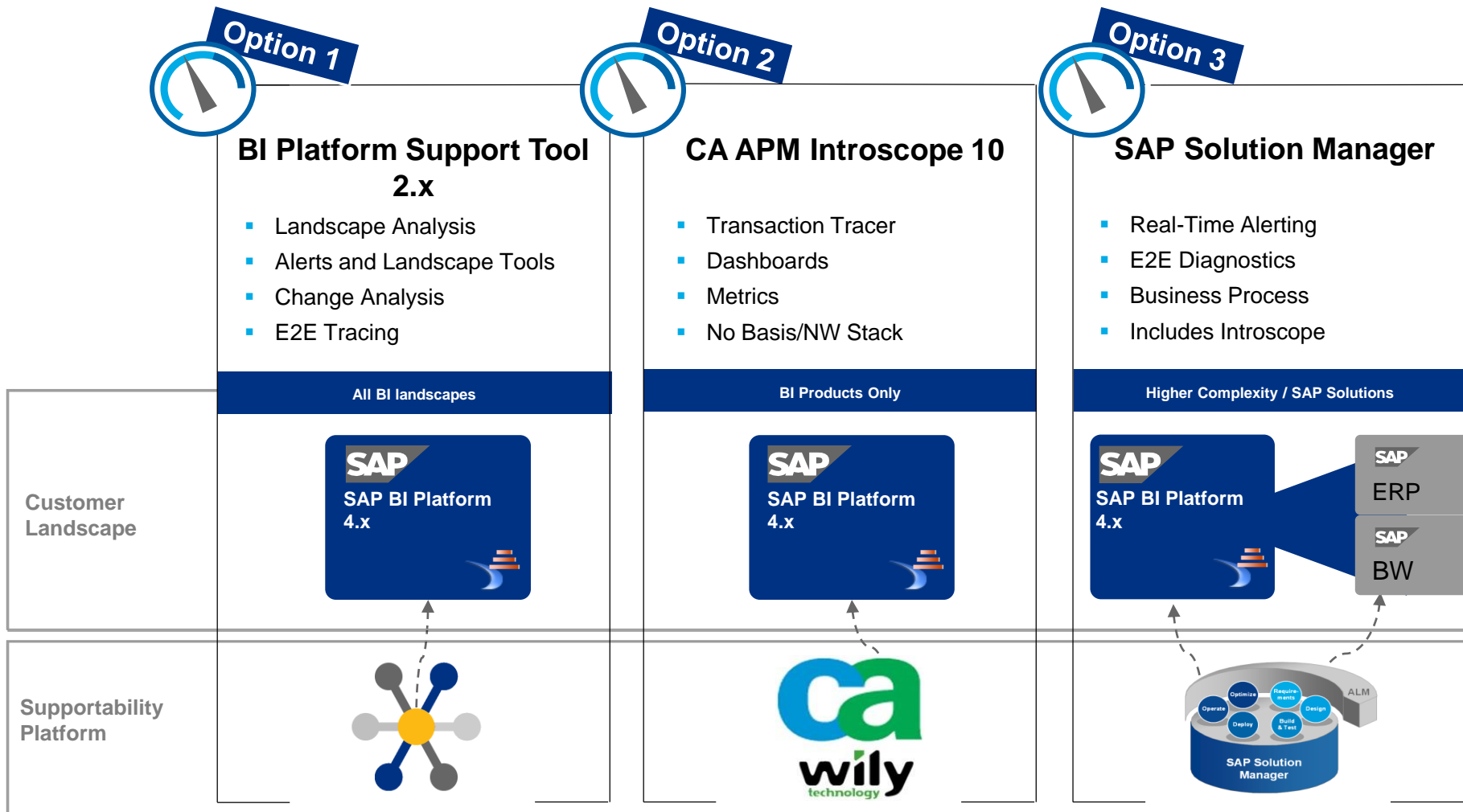
- SAP BI Supportability Tools Overview
- Landscape Analysis Report
- What's New in Version 2.1
- Future Functionality
- Demo
- Wrap-up



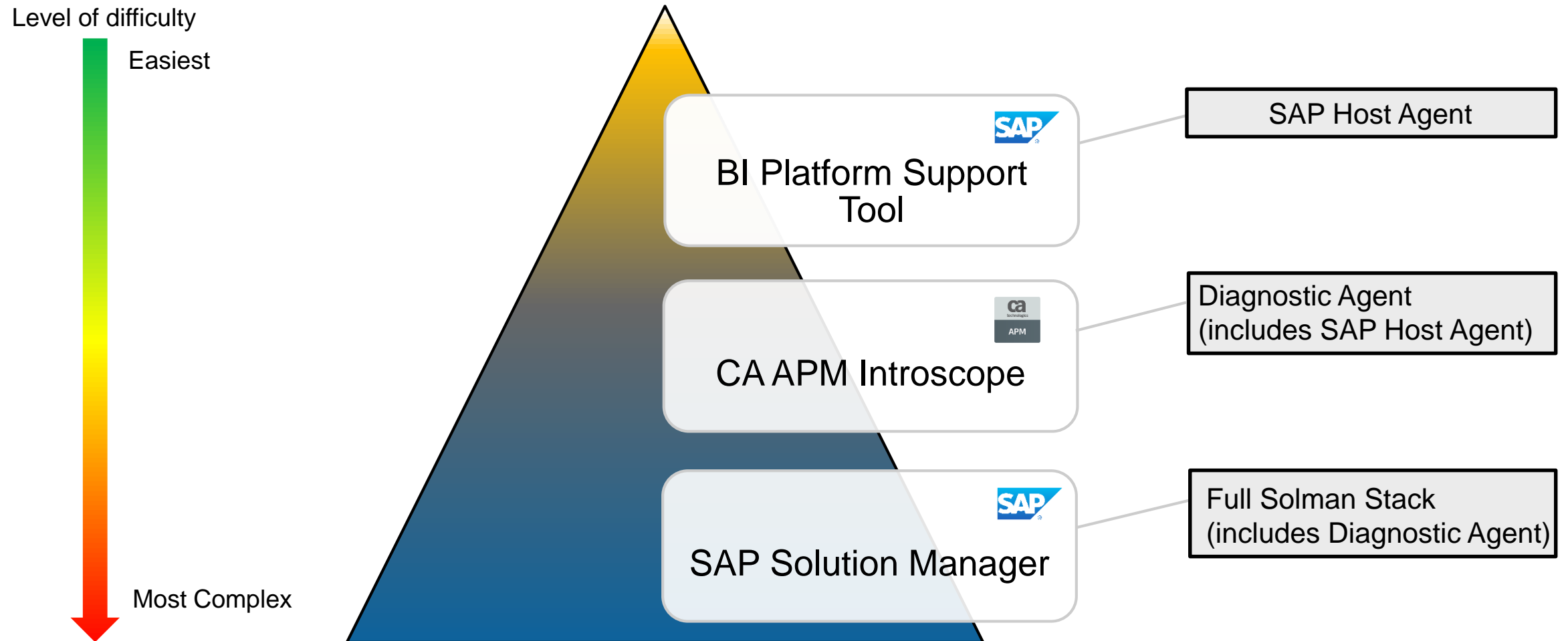
SAP BI Supportability Tools Overview



SAP BI Platform Supportability Tools



SAP BI Platform Supportability Tools



Tip

BIPST is compatible with existing Solman / Introscope infrastructure

Who Uses the BIPST?

ROLE	FUNCTION
Support	<ul style="list-style-type: none">• Incident Processing• Discovery
BI Administrators	<ul style="list-style-type: none">• Pro-active Alerts• Change Management• Tracing
Consultants	<ul style="list-style-type: none">• Service Delivery• Sizing• Deployment
Product Development	<ul style="list-style-type: none">• Landscape Validation• Root Cause Analysis



Over 35,000 downloads since Version 1

Details on the BIPST client

- Developed in Java (ships with the SAP JVM 8)
- No installation required, only extraction
- Client runs on Windows 64-bit
- Supports BI Platform 4.0, 4.1, 4.2 (All OS versions)
- Command-line version for Linux also available
- Downloadable from the SAP Software Download Centre
- 100% free to download and use in your environment



Linux / Unix Command Line Version

```
[boeuser@BI41RH6 bipst]$ ./BISupportTool64.sh
Checking Java Version... found 1.8.0_112
Unable to determine user home from user.bit
Initializing BIPST for command-line mode
...Using home directory: /build/home/boeuser/BISupportTool
Unable to unmarshall preferences.xml data.
...Creating new preferences.xml in user's $HOME folder

Welcome to the SAP BusinessObjects BI Platform support tool
-----

MAIN MENU - Please choose from the options below:
[1] Run Landscape Analysis Report(s)
[2] Configure Landscape
[3] Quit
```

```
CONFIGURE LANDSCAPE: @BI41RH6:6400
-----
[0] Previous Step
[1] Add BI Node
[2] Modify BI Node
[3] Delete BI Node
[4] Add WebApp Node
[5] Modify WebApp Node
[6] Delete WebApp Node
[7] List all Nodes
[8] Verify all SAP Host Agent connectivity
[9] Verify all JMX connectivity
```

```
Login to the landscape
-----
Enter the CMS Name : BI41RH6
Enter your user name : administrator
Enter your password :
Enter the Auth Type? [secEnterprise/secLDAP] : secEnterprise

Logging into the landscape... SUCCESS

About to process reports defined in 'BISupportTool64.sh'
Reports selected: ServerAnalysis, ContentAnalysis, ScheduleAnalysis, LicenseKeyA
ServerAnalysis, PatchHistoryAnalysis, BIApplicationsAnalysis, TimeoutsAnalysis
```

Linux / Unix Command Line Version

```
Server and Services Report : SUCCESS!
Content Analysis Report : SUCCESS!
Schedule Analysis Report : SUCCESS!
License Key Report : SUCCESS!
Platform Search Report : SUCCESS!
Hardware Summary Report : SUCCESS!
Authentication Report : SUCCESS!
Semantic Layer Dependency Analysis : SUCCESS!
Semantic Layer Connection Analysis : SUCCESS!
Semantic Layer Orphan Report Analysis : SUCCESS!
Web Application Server Report : SUCCESS!
Patch History Report : SUCCESS!
BI Applications Report : SUCCESS!
Timeouts Report : SUCCESS!
System Alert Report : SUCCESS!
Creating HTML reports...
Compressing landscape report(s)...

=====
Landscape Reports are Complete!
Compressed File Location : /build/home/boeuser/BISupportTool/data/BISupportTool_20150203_235813.zip
=====
```



Tip

Use Linux version when no Windows client is available



Heads-Up

Limited to Landscape Analysis Report

Topology and Client Communication



Landscape Analysis

- Corba
- Host Agent (web service)
- JMX

E2E Trace Wizard
Step 2: Confirm Settings

Landscape: @BIPW08R2-6400

E2E Work Directory: C:\Users\v817751\AppData\Roaming\BISupportTool\e2e_workdir

BI Log Collection: Use SAP Host Agent

WebApp Log Collection: Use SAP Host Agent

Override BO_Trace.ini: ☒

Record E2E Session: ☒

☒ Use Integrated SAP Client Plug-in

Domain:

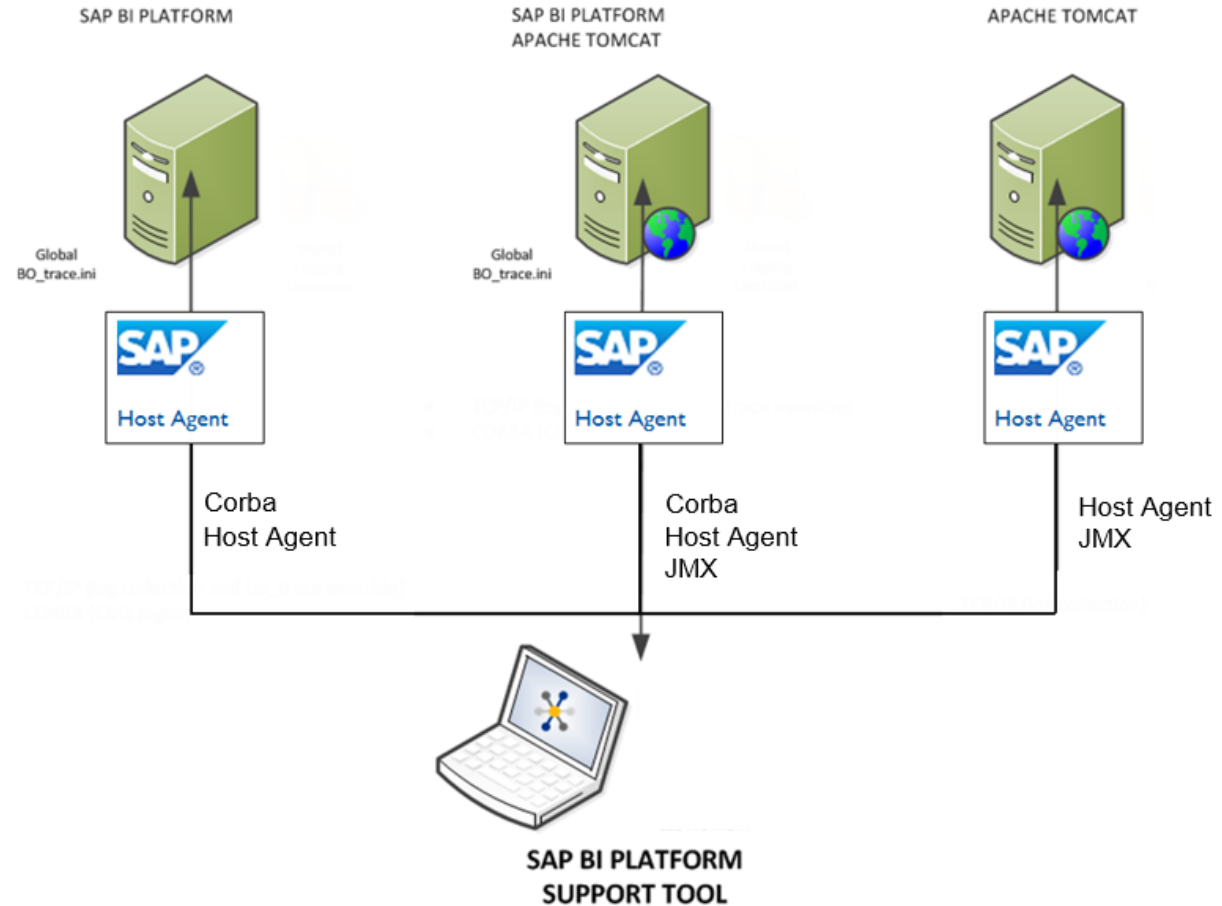
User Name:

Password:

☒ Run As Administrator

Back Begin Trace

- Host Agent (web service)
- UNC Shares / Samba



Landscape Analysis Report



Analysis Types



Server & Services



Content



Schedule



License Keys



Platform Search



BI Applications



Hardware and Operating System



Authentication



Semantic Layer



Web Application Server

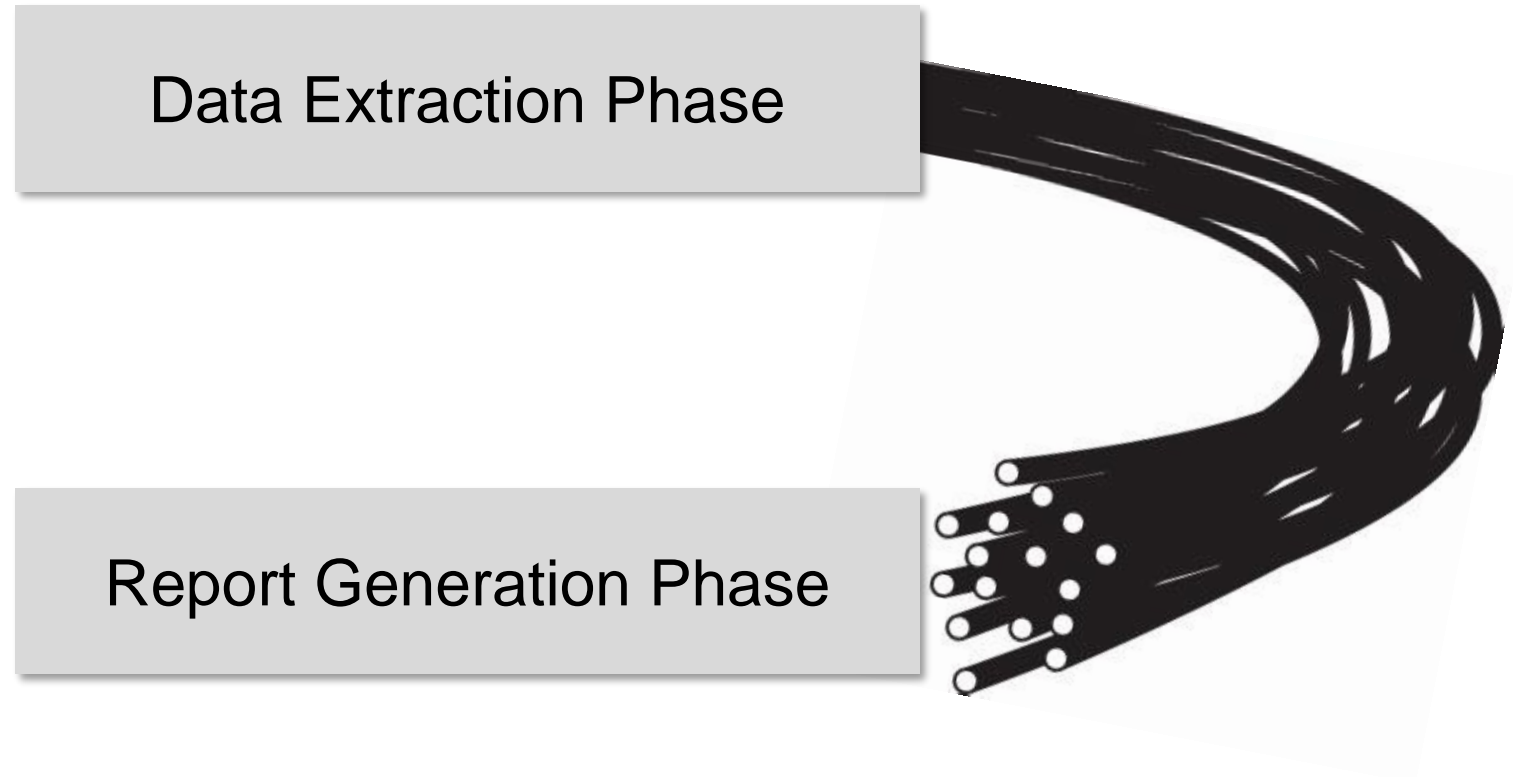


Patch History



Timeouts

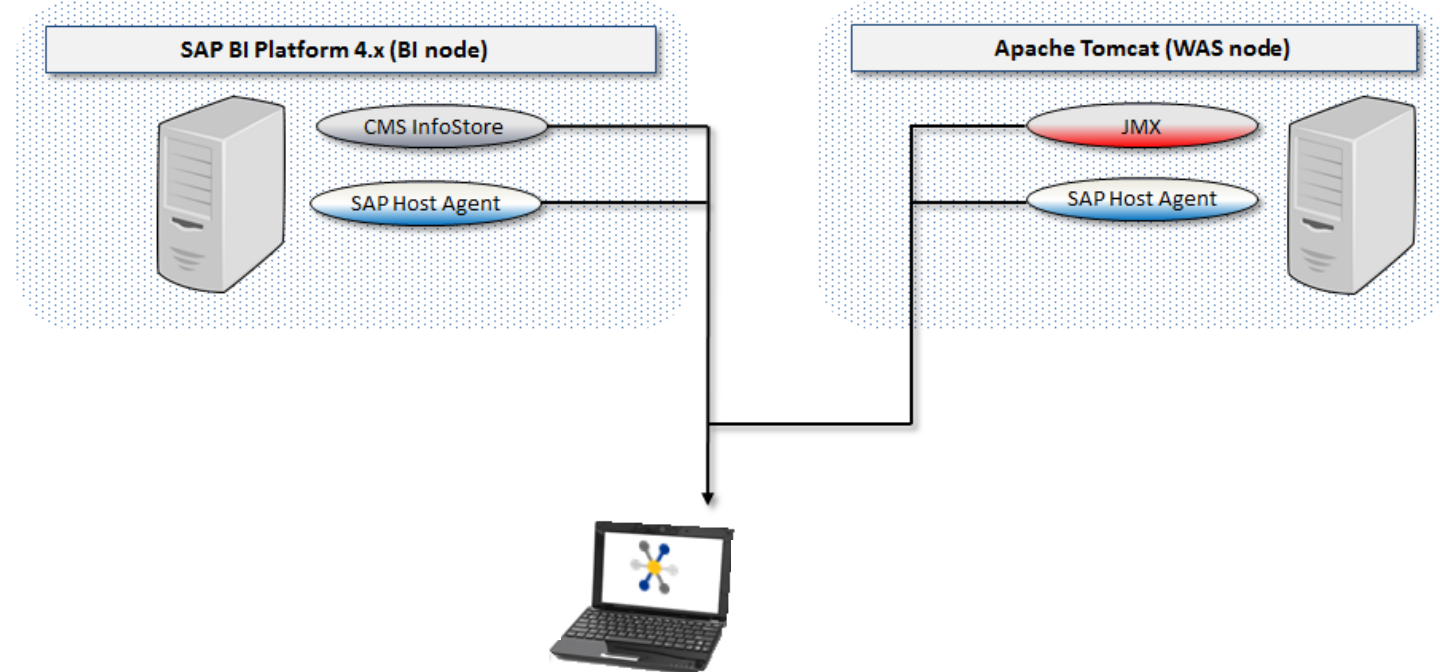
Phases of Report Generation



Landscape Analysis Report Process Flow

Data Extraction Phase

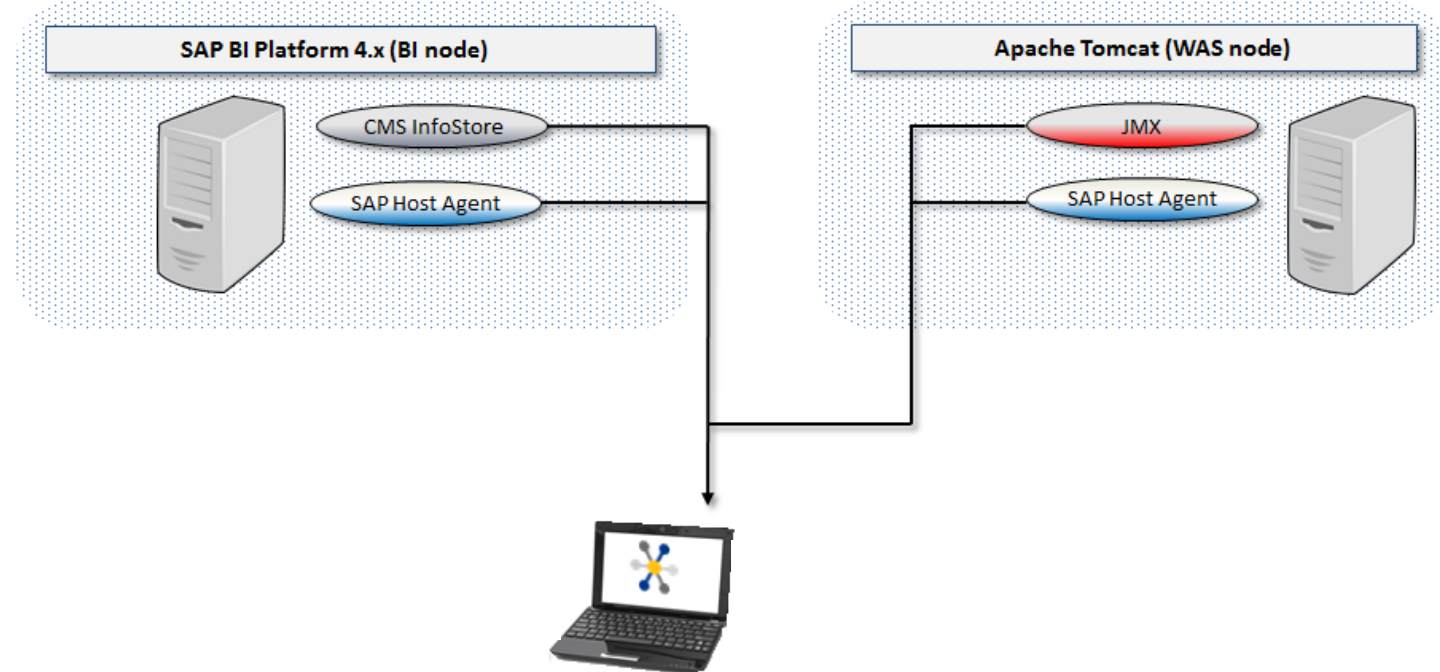
- ☐ User selects which analysis types to include



Landscape Analysis Report Process Flow (cont.)

Data Extraction Phase

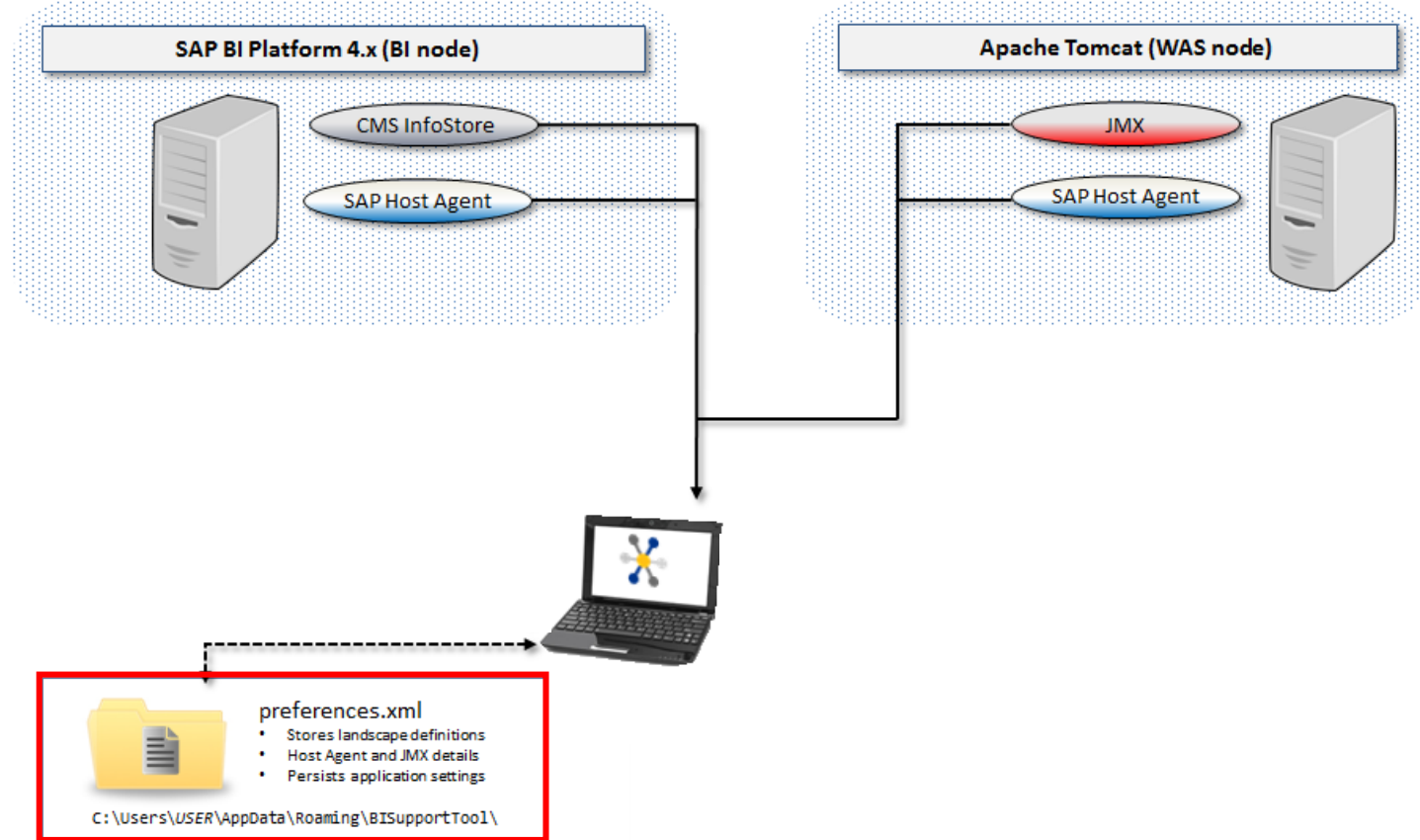
- ☐ User selects which analysis types to include
- ☐ User logs on to a CMS system



Landscape Analysis Report Process Flow (cont.)

Data Extraction Phase

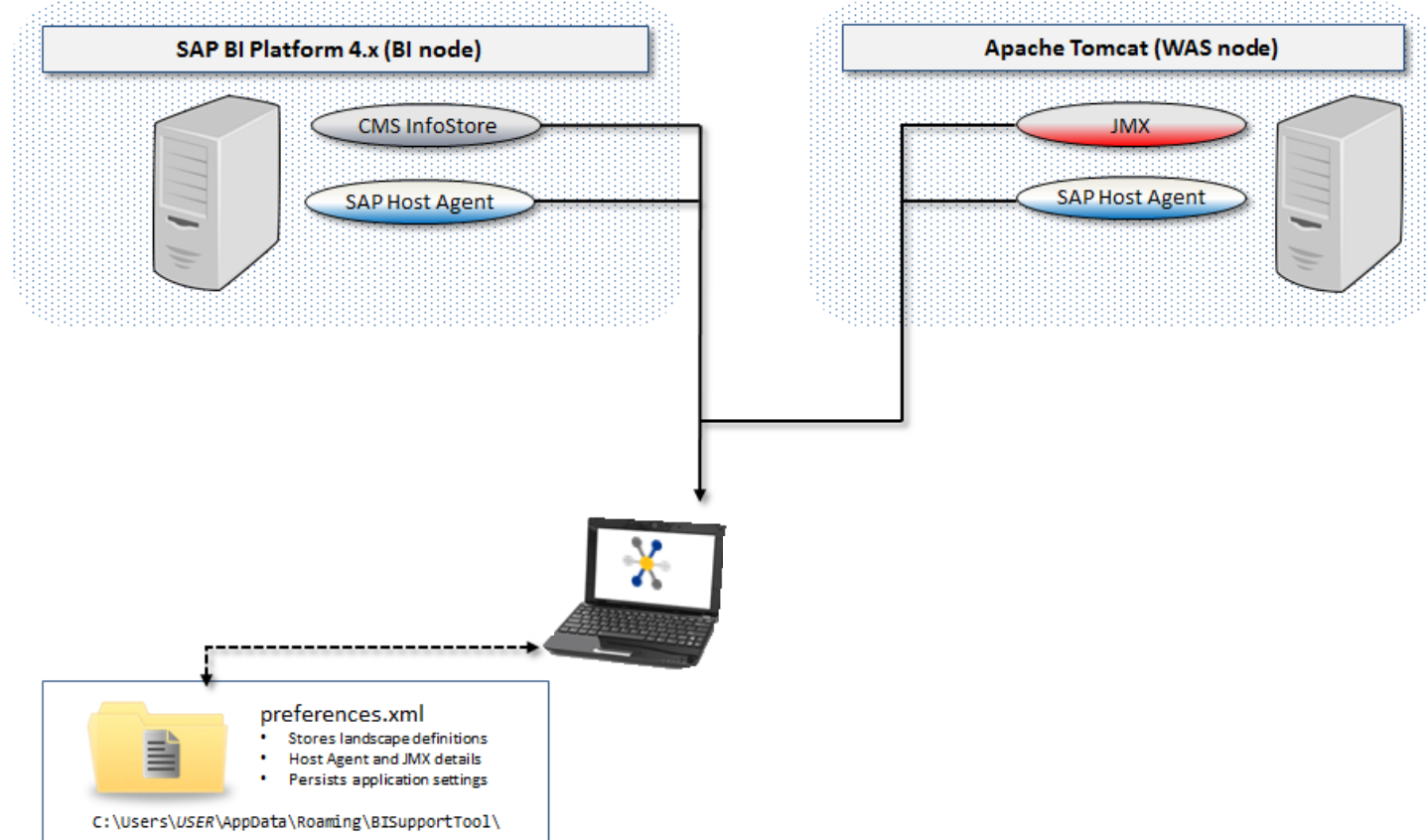
- ☐ User selects which analysis types to include
- ☐ User logs on to a CMS system
- ☐ BIPST looks up landscape configuration



Landscape Analysis Report Process Flow (cont.)

Data Extraction Phase

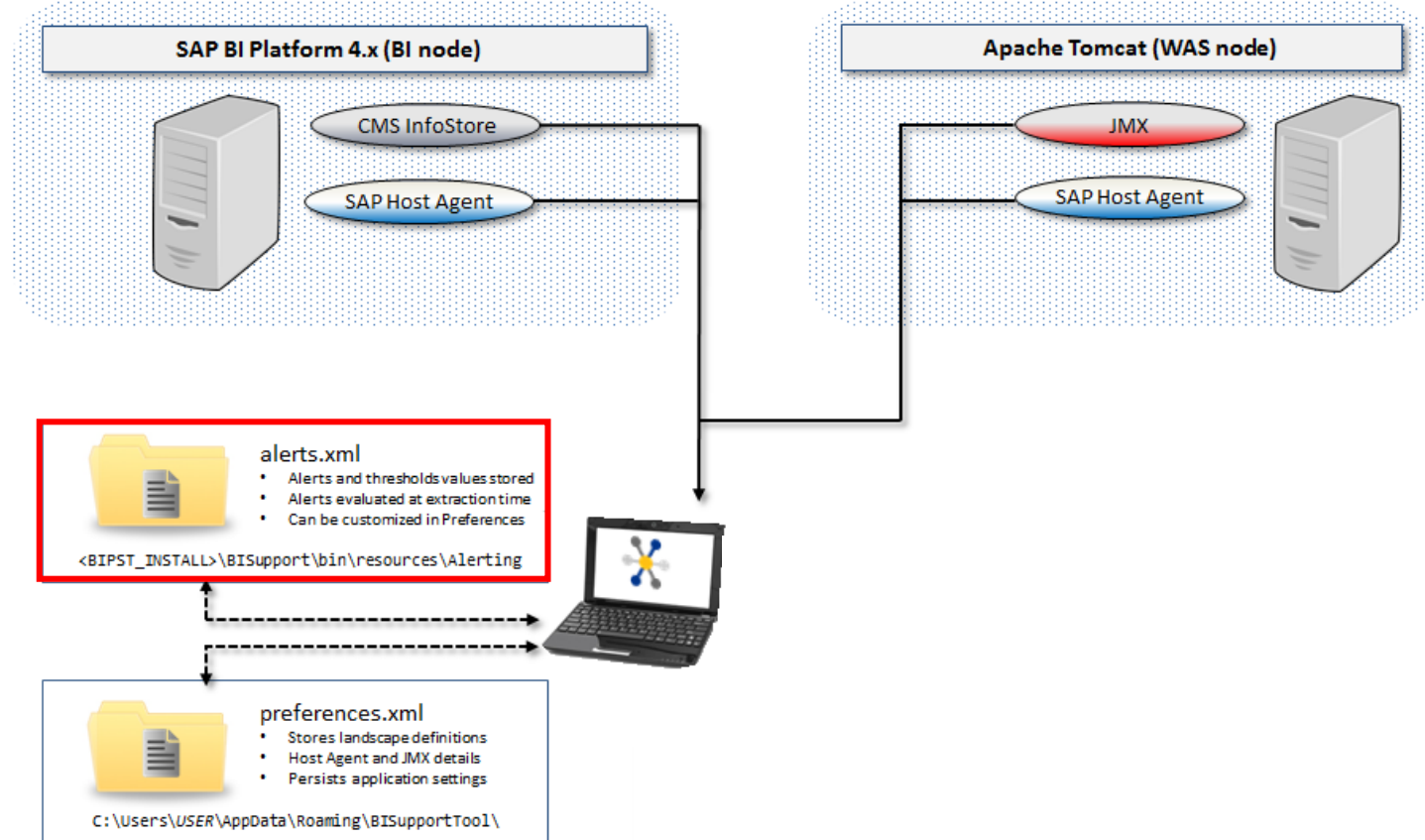
- ☐ User selects which analysis types to include
- ☐ User logs on to a CMS system
- ☐ BIPST looks up landscape configuration
- ☐ Data is collected from nodes



Landscape Analysis Report Process Flow (cont.)

Data Extraction Phase

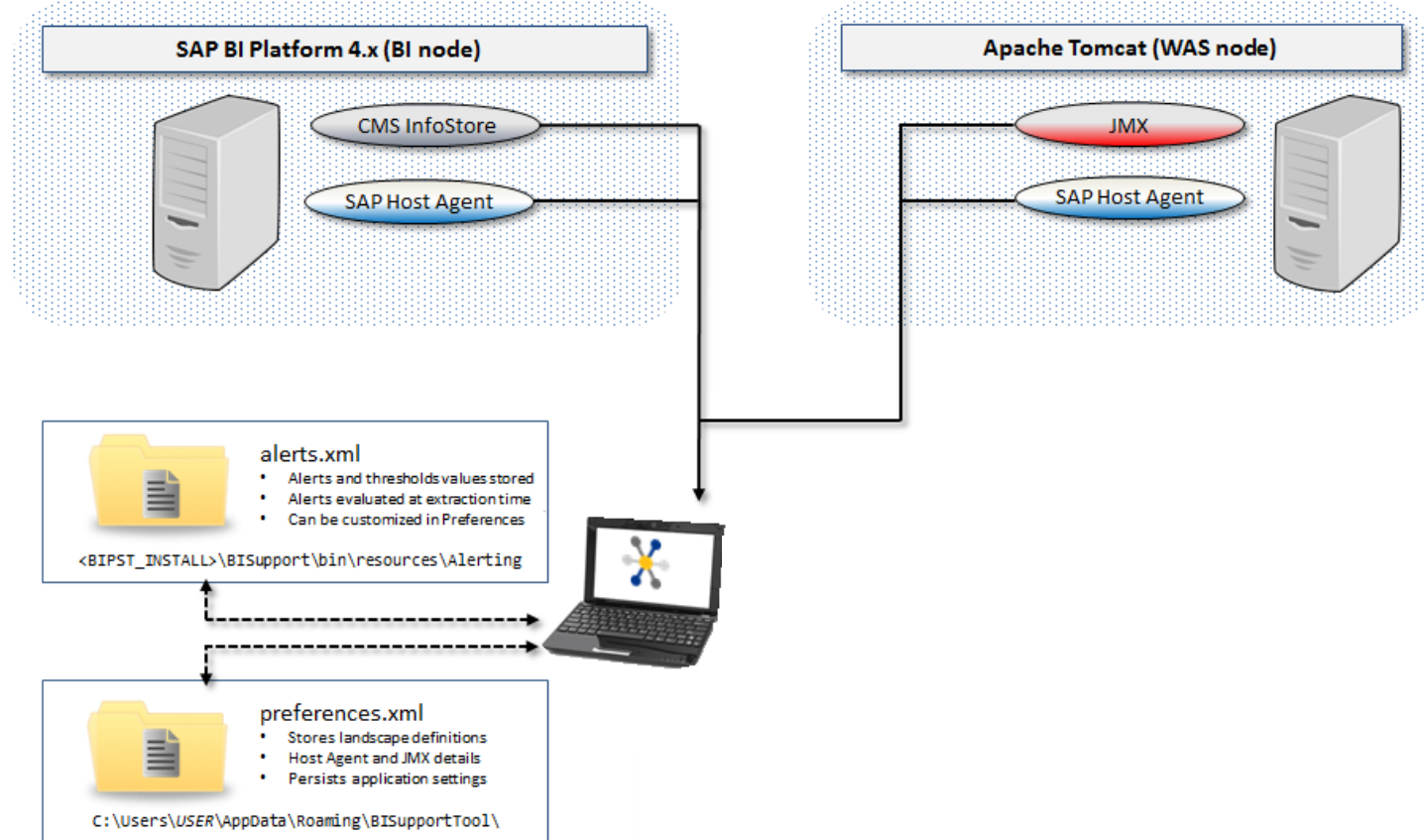
- ☐ User selects which analysis types to include
- ☐ User logs on to a CMS system
- ☐ BIPST looks up landscape configuration
- ☐ Data is collected from nodes
- ☐ BIPST loads alert definitions



Landscape Analysis Report Process Flow (cont.)

Data Extraction Phase

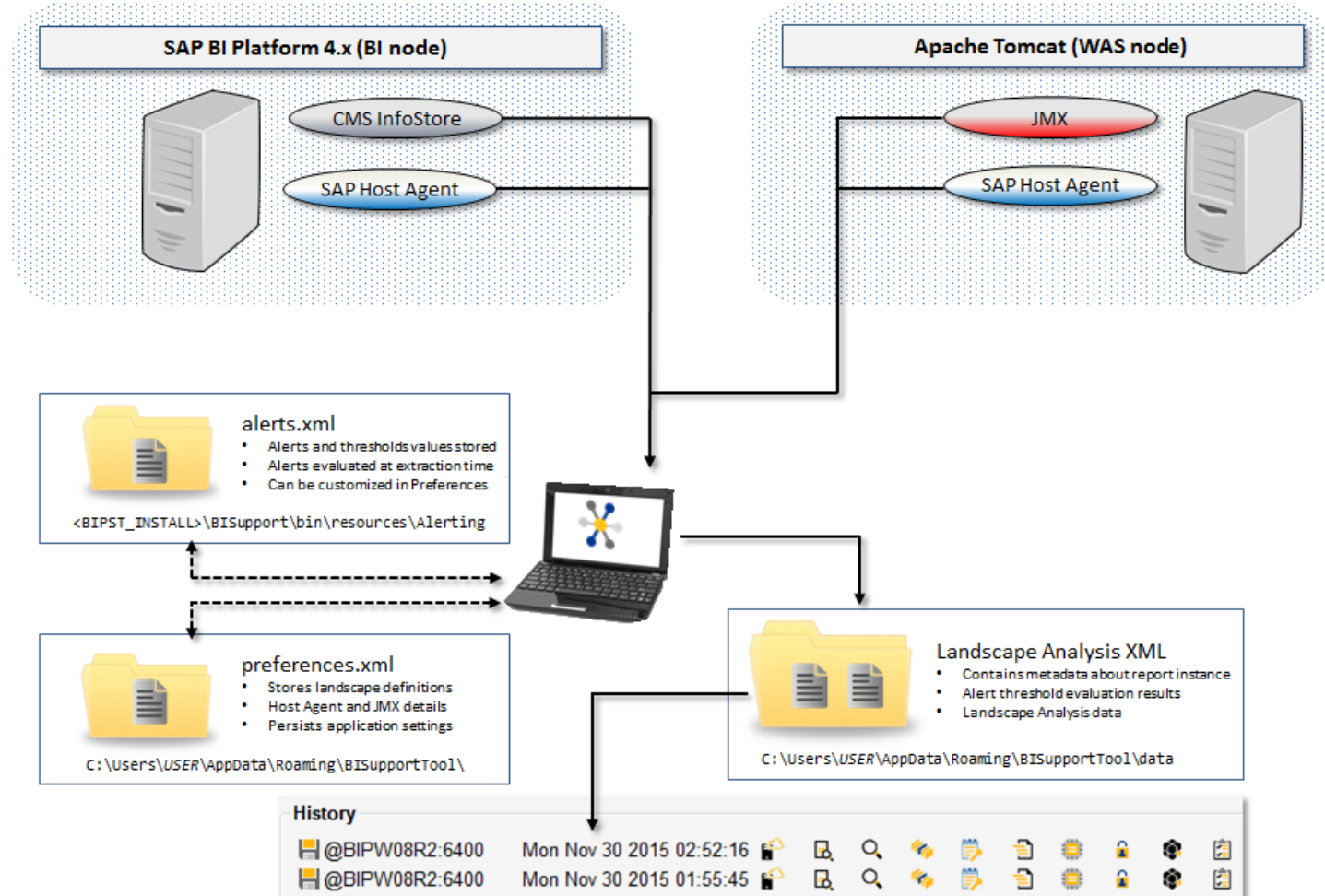
- ❑ User selects which analysis types to include
- ❑ User logs on to a CMS system
- ❑ BIPST looks up landscape configuration
- ❑ Data is collected from nodes
- ❑ BIPST loads alert definitions
- ❑ BIPST evaluates alert thresholds



Landscape Analysis Report Process Flow (cont.)

Data Extraction Phase

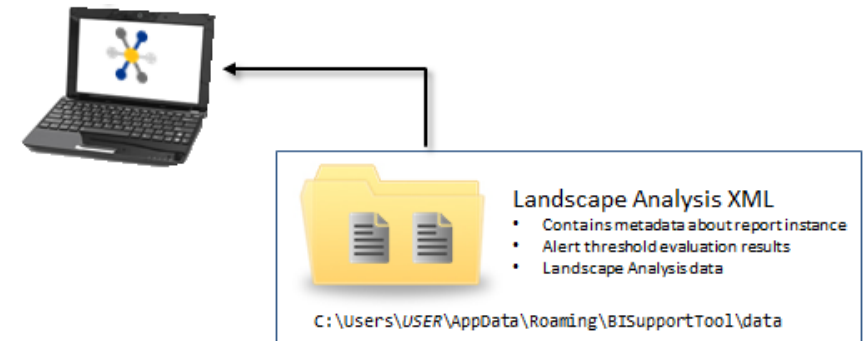
- ❑ User selects which analysis types to include
- ❑ User logs on to a CMS system
- ❑ BIPST looks up landscape configuration
- ❑ Data is collected from nodes
- ❑ BIPST loads alert definitions
- ❑ BIPST evaluates alert thresholds
- ❑ Landscape data XML is created



Landscape Analysis Report Process Flow (cont.)

Report Generation Phase

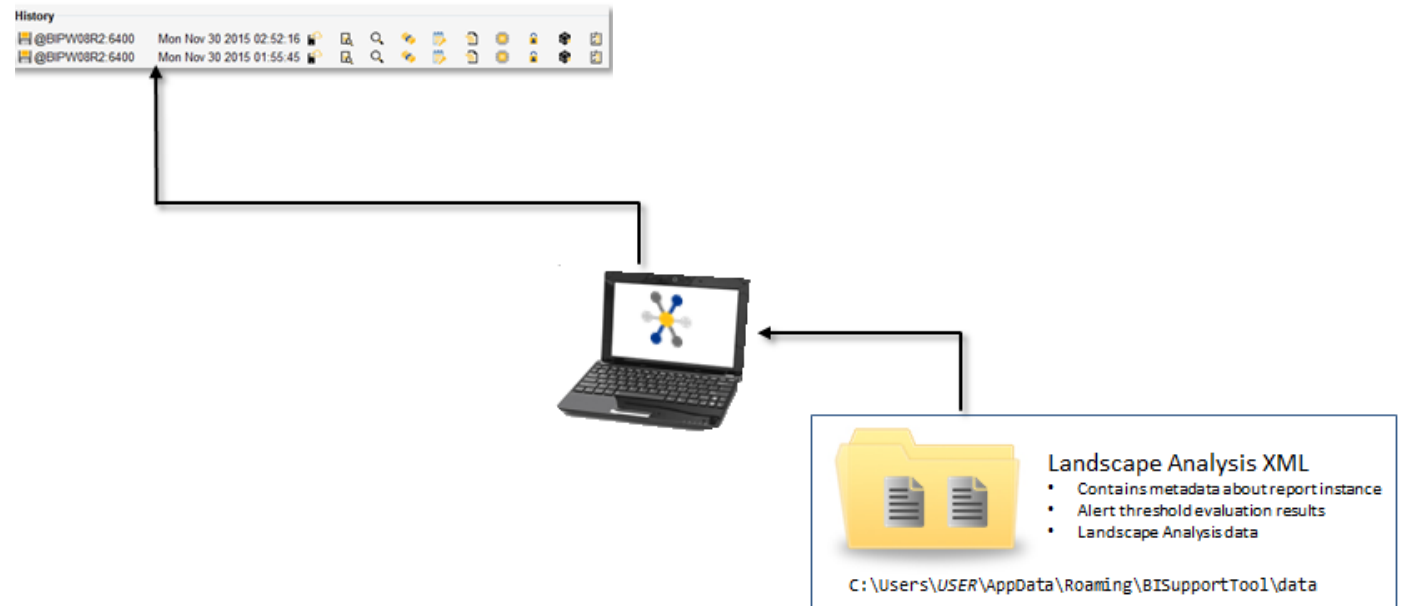
- ❑ Landscape Data XML is read



Landscape Analysis Report Process Flow (cont.)

Report Generation Phase

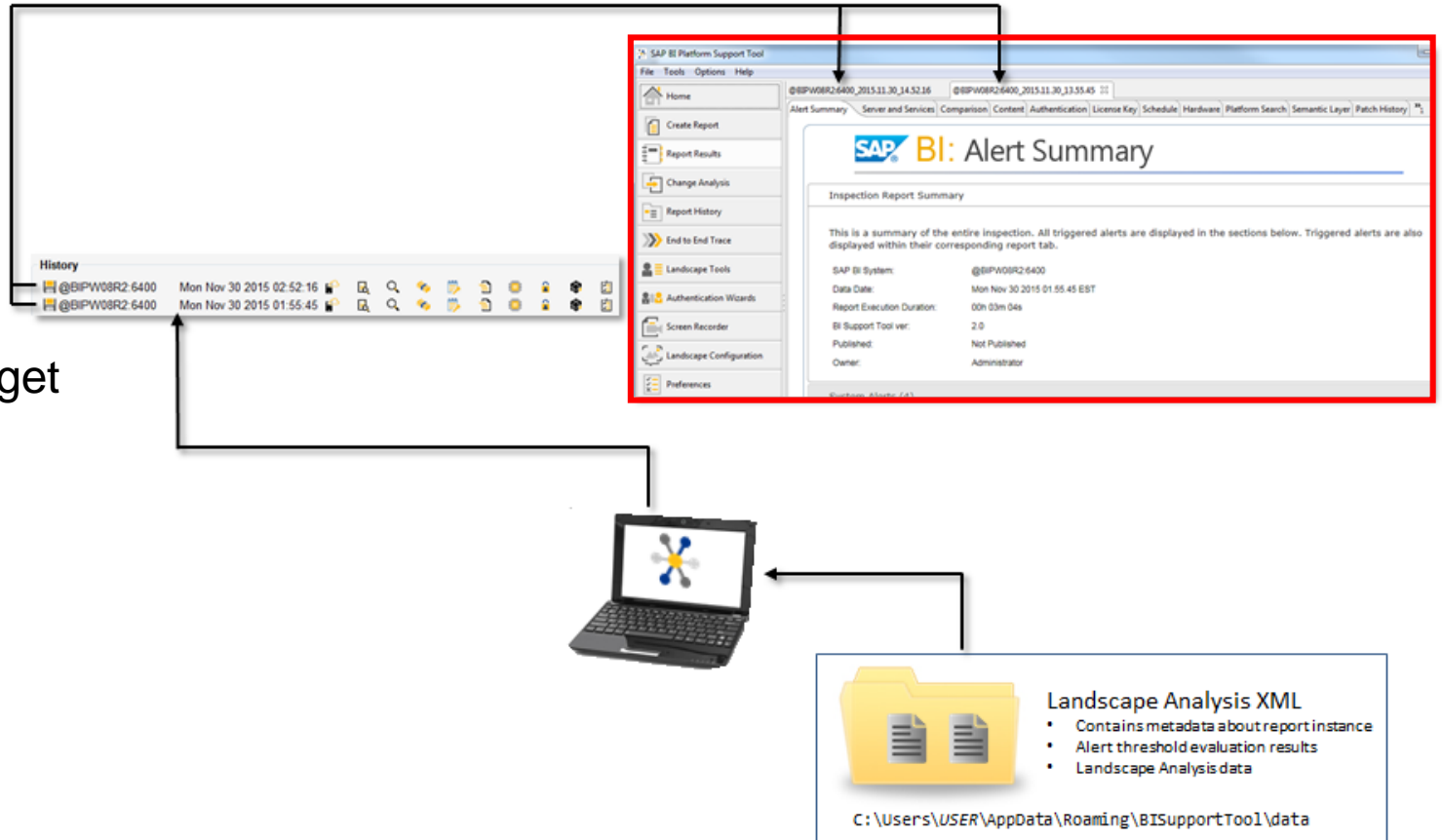
- ❑ Landscape Data XML is read
- ❑ Each report is rendered



Landscape Analysis Report Process Flow (cont.)

Report Generation Phase

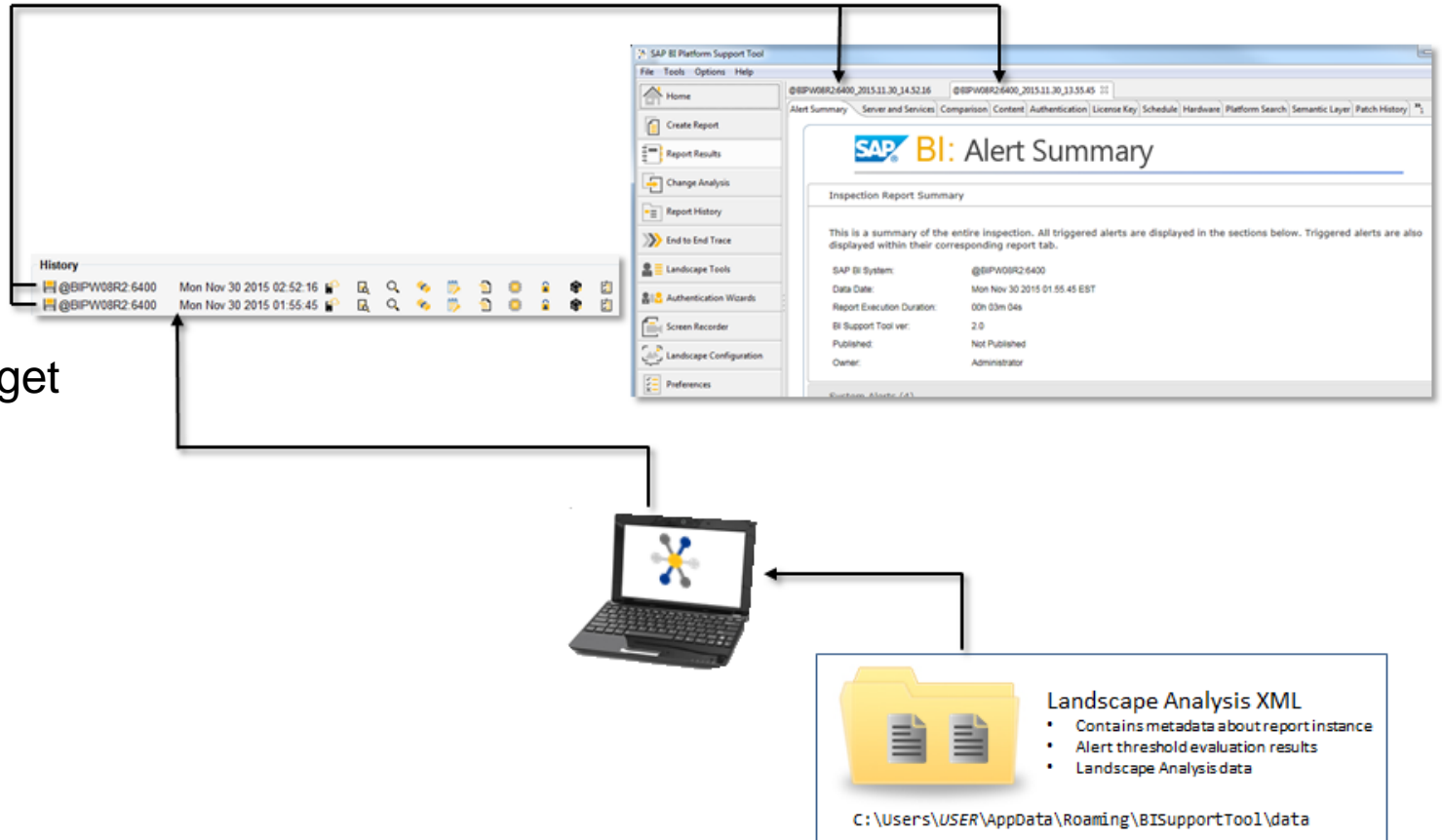
- ❑ Landscape Data XML is read
- ❑ Each report is rendered
- ❑ Content is displayed in browser widget



Landscape Analysis Report Process Flow (cont.)

Report Generation Phase

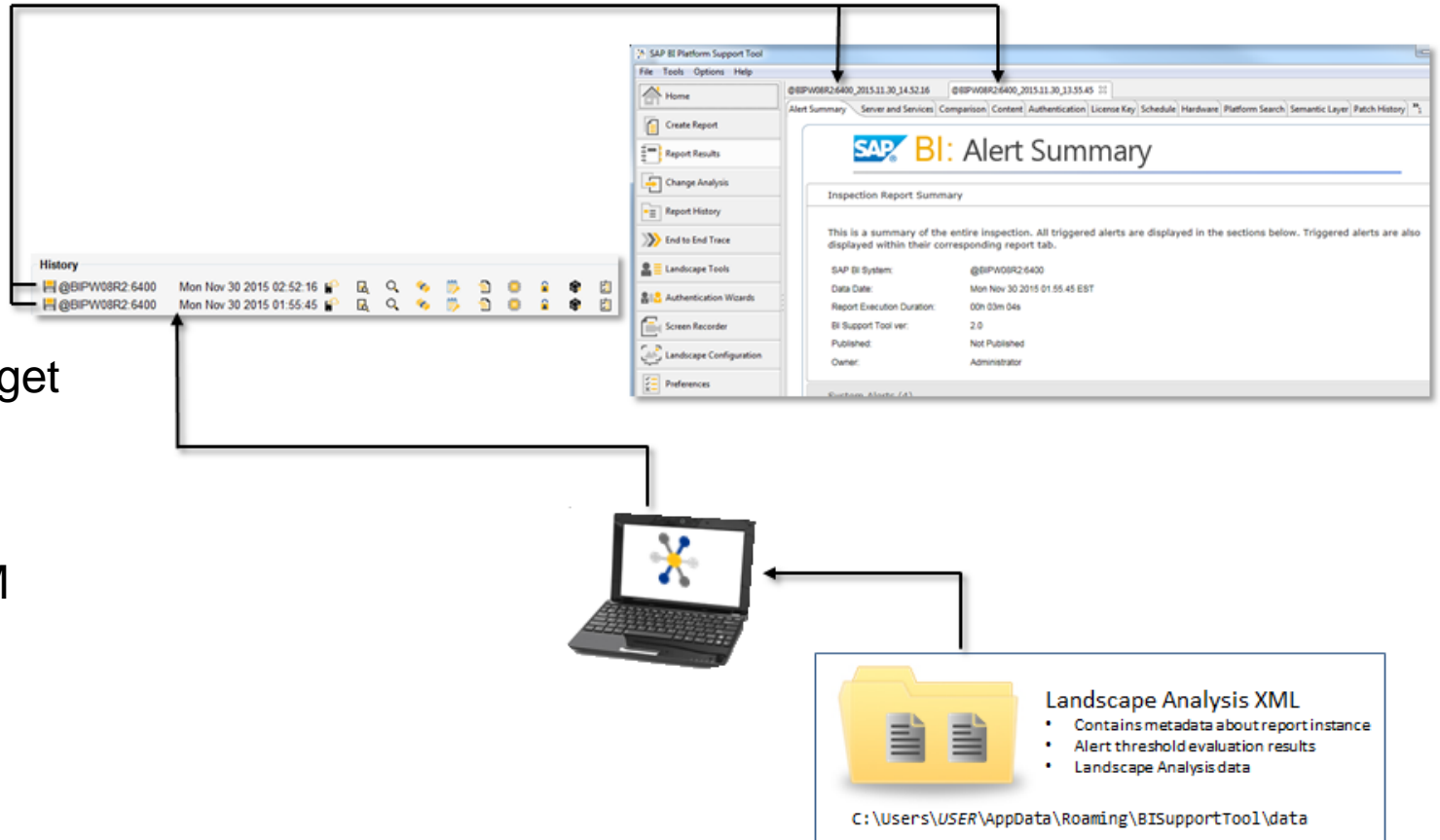
- ❑ Landscape Data XML is read
- ❑ Each report is rendered
- ❑ Content is displayed in browser widget
- ❑ User experience made interactive



Landscape Analysis Report Process Flow (cont.)

Report Generation Phase

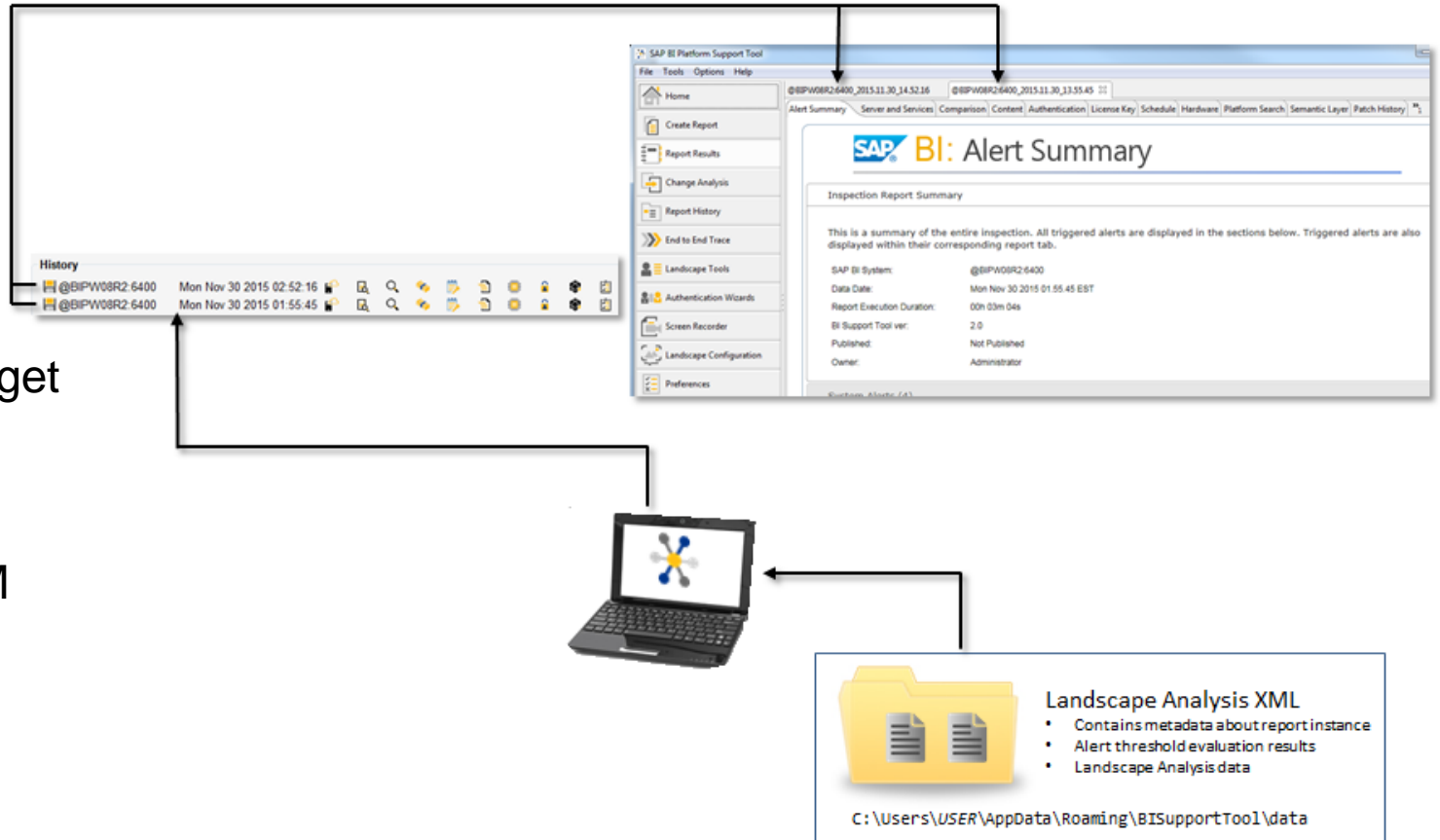
- ❑ Landscape Data XML is read
- ❑ Each report is rendered
- ❑ Content is displayed in browser widget
- ❑ User experience made interactive
- ❑ Charts and visualizations via CVOM



Landscape Analysis Report Process Flow (cont.)

Report Generation Phase

- ❑ Landscape Data XML is read
- ❑ Each report is rendered
- ❑ Content is displayed in browser widget
- ❑ User experience made interactive
- ❑ Charts and visualizations via CVOM
- ❑ Multiple reports can be opened



Report History

<< OSDisk (C:) > Users > User > AppData > Roaming > BISupportTool > data

Name	Date modified	Type	Size
@BI42LCM2_2017.10.9_10.19.59.xml	10/9/2017 12:25 PM	XML Document	13,799 KB
@BI42LCM2_2017.10.9_12.04.33.xml	10/9/2017 12:45 PM	XML Document	13,800 KB
@BIPW12R2.6400_2017.10.5_16.12.32.xml	10/5/2017 4:17 PM	XML Document	1,056 KB
@BI42LCM2_2017.8.22_15.17.37.xml	8/22/2017 3:22 PM	XML Document	1,568 KB
@BI42LCM2_2017.8.22_14.44.36.xml	8/22/2017 2:52 PM	XML Document	13,588 KB
@BI42LCM2_2017.8.22_14.4.47.xml	8/22/2017 2:09 PM	XML Document	12,896 KB
@BI42LCM2_2017.8.15_16.31.39.xml	8/15/2017 4:37 PM	XML Document	13,267 KB
@BI42LCM2_2017.8.15_15.54.49.xml	8/15/2017 3:55 PM	XML Document	22 KB
@BI42LCM2_2017.8.15_13.56.7.xml	8/15/2017 1:56 PM	XML Document	960 KB
@BI42LCM2_2017.8.15_13.39.36.xml	8/15/2017 1:40 PM	XML Document	960 KB
@BI42LCM2_2017.8.15_12.24.40.xml	8/15/2017 12:26 PM	XML Document	295 KB
@BI42LCM2_2017.8.15_11.3.23.xml	8/15/2017 11:57 AM	XML Document	12,902 KB
@BI42LCM2_2017.8.14_13.39.57.xml	8/14/2017 3:51 PM	XML Document	651 KB

Analysis Types

Hardware Servers and Services Platform Search Semantic Layer License BI Applications
Schedule Web Application Server Patch History Authentication Content Timeouts

Sort History Date (DESC)

History

Landscape	Version	Date	
@BI42LCM2	ver 2.1	Mon Oct 09 2017 12:04:33 PM	
@BI42LCM2	ver 2.1	Mon Oct 09 2017 10:19:59 AM	
@BIPW12R2:6400	ver 2.1	Thu Oct 05 2017 4:12:32 PM	
@BI42LCM2	ver 2.1	Tue Aug 22 2017 3:17:37 PM	
@BI42LCM2	ver 2.1	Tue Aug 22 2017 2:44:36 PM	
@BI42LCM2	ver 2.1	Tue Aug 22 2017 2:04:47 PM	
@BI42LCM2	ver 2.1	Tue Aug 15 2017 4:31:39 PM	
@BI42LCM2	ver 2.1	Tue Aug 15 2017 3:54:49 PM	
@BI42LCM2	ver 2.1	Tue Aug 15 2017 1:56:07 PM	
@BI42LCM2	ver 2.1	Tue Aug 15 2017 1:39:36 PM	
@BI42LCM2	ver 2.1	Tue Aug 15 2017 12:24:40 PM	
@BI42LCM2	ver 2.1	Tue Aug 15 2017 11:03:23 AM	
@BI42LCM2	ver 2....	Mon Aug 14 2017 3:39:57 PM	

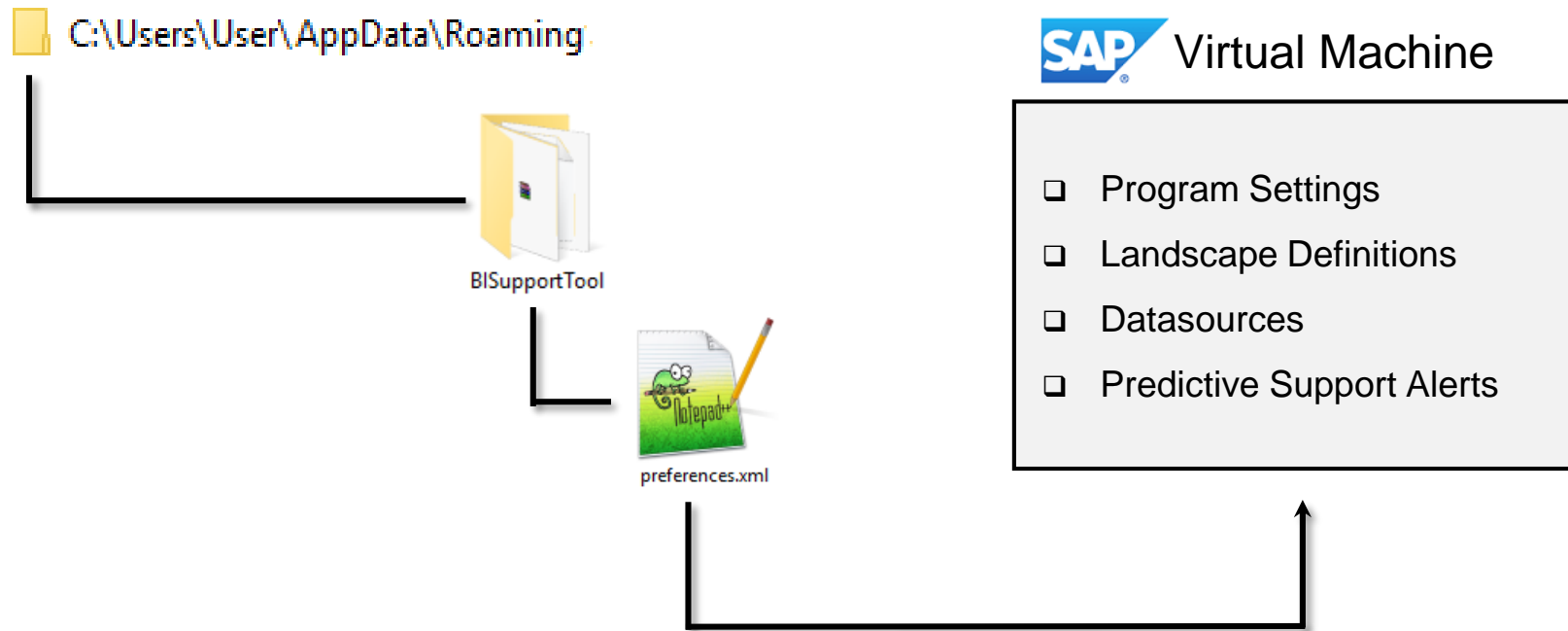
View Report
Export Report
Publish to SAP

Delete Export Send to SAP Refresh Open

Alert Framework

Simple Alerts	Simple alerts allow user customization, changes to thresholds, delete, or add new metrics
System Alerts	System defined static alerts which allow for more advanced logic <ul style="list-style-type: none"><input type="checkbox"/> Keycode expires in 30 or 60 or 90 days<input type="checkbox"/> Nodes are not at the same patch level<input type="checkbox"/> Nodes are not running the same SP
Complex Alerts	<ul style="list-style-type: none"><input type="checkbox"/> More advanced logic<input type="checkbox"/> Combine two or more alerts into formula<input type="checkbox"/> Complex Alerts added in version BIPST 2.1
Alert Definitions	<ul style="list-style-type: none"><input type="checkbox"/> Alerts are updated via the preferences interface<input type="checkbox"/> Definitions are stored in XML form under the BIPST install folder
Alert Summary	Provides summary of all alerts triggered in a particular Landscape Analysis

User Persistence



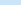
Scheduling the Landscape Analysis Report



Schedule Landscape Analysis Report


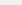
upload to the BI Platform as a schedulable object

The BI Platform Support Tool Landscape reports can be scheduled to a destination location defined here. Select the desired destination from the drop-down list to configure the additional parameters as needed.

Destination: Enterprise Repository 

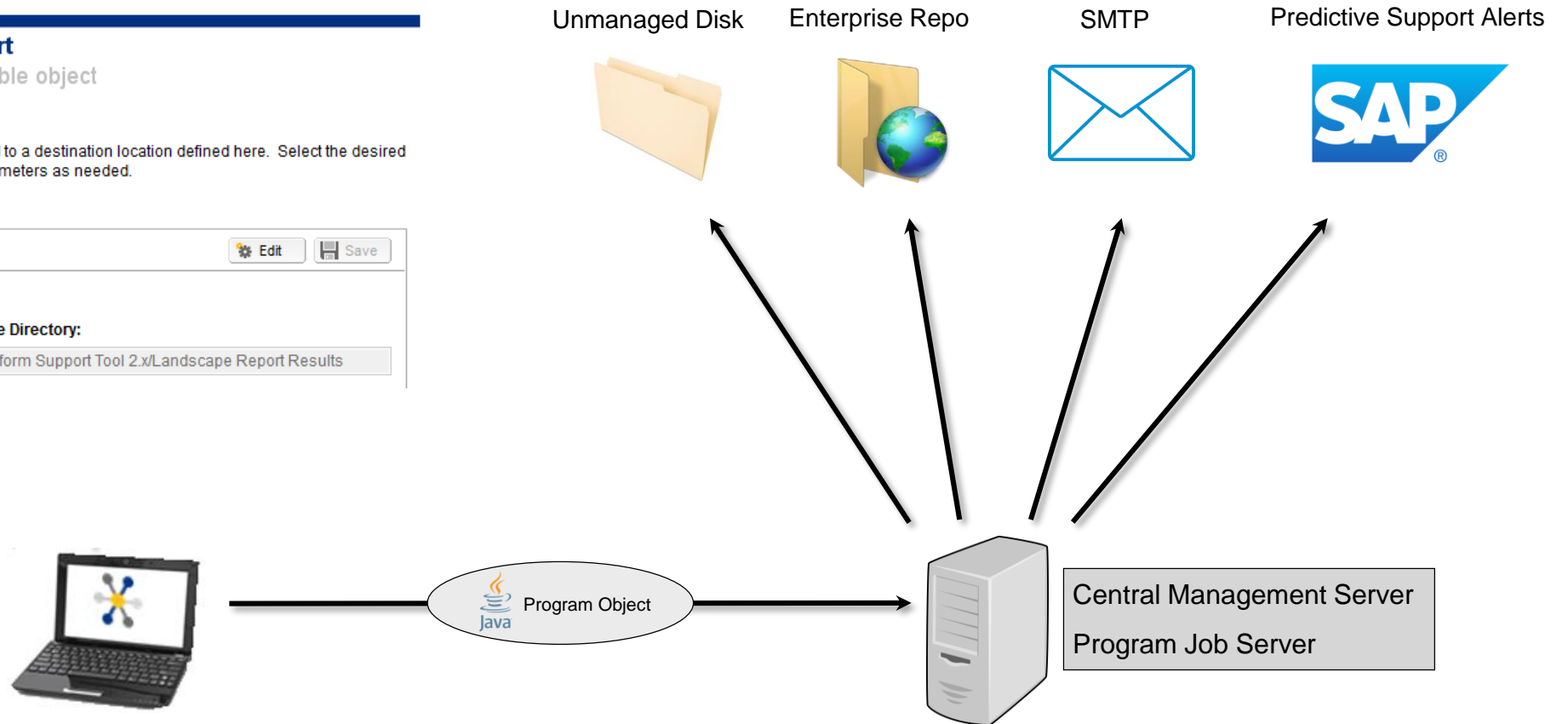
- Enterprise Repository
- Unmanaged Disk
- Send to SAP
- E-mail (SMTP)

BI Platform instances are saved to the Enterprise server at the directory specified to the right.


 Edit  Save

Enterprise Directory:

/BI Platform Support Tool 2.x/Landscape Report Results



The screenshot shows the 'Manage Objects' app interface. On the left, a tree view displays the object hierarchy: 'Objects List' > 'All Folders' > 'Auditing' > 'BI Platform Support Tool 2.x' > 'Landscape Report Results' > 'Landscape Results'. The 'Landscape Results' object is selected and highlighted in blue. The main area displays a table with the following data:

Title ^	Type	Description
 BIsupportTool_20171027_123835.zip	Agnostic	Server and Services, Platform Search, BI Applications, Hardware,

What's New in Version 2.1



What's New in Version 2.1?

- Landscape Analysis Report:
 - ✓ Scheduling
 - ✓ SMTP, Managed, Unmanaged Destinations
 - ✓ Complex Alerts / System Alerts
 - ✓ New Alerts on Best Practices
 - ✓ BI Applications Analysis
 - ✓ Timeouts Analysis
 - ✓ Server Group Analysis
 - ✓ Change Analysis supports all analysis types
 - ✓ More critical data
 - BI Webapp / Server .properties files
 - Server xml files
 - BO_trace.ini
 - Registry settings
- Landscape Tools
 - ✓ Webi Doc Masker
 - ✓ Publications Analyzer
 - ✓ Existing tools improved
- Secure Socket Layer Support
 - ✓ Corba SSL
 - ✓ JMX SSL
 - ✓ SAP Host Agent SSL
- More Preferences
 - ✓ Disable Feeds
 - ✓ Data Retention
 - ✓ BI SDK Multiple Version Support

Future Functionality



Future Functionality

- SAP UI5
- Architecture Diagram
- Integrity Report
- Performance Analysis
- Auditing Data
- Drift Analysis
- Integration with BIP Notifications
- Trace Analyzer



** Planned functionality is not guaranteed and may change based on future requirements

Live Demo



Demo the BIPST 2.1



SAP
BUSINESSOBJECTS
BI PLATFORM
SUPPORT TOOL 2.1



- Landscape Analysis Report and Alerting deep-dive
- Change Analysis
- Schedule Manager
- Webi Document Data Masker
- Other Landscape Tools

Wrap-up



Where to Find More Information

<https://wiki.scn.sap.com/wiki/display/BOBJ/SAP+BI+Platform+Support+Tool>

- BI Platform Support Tool homepage

<https://wiki.scn.sap.com/wiki/display/BOBJ/Getting+Started+with+the+Windows+client+version>

- Getting Started Guide

<https://blogs.sap.com/2017/12/15/bi-platform-support-tool-2.1-is-released-heres-a-summary-of-the-new-features/>

- Summary of new features in version 2.1

<https://launchpad.support.sap.com/#/softwarecenter>



Take Home File

- Software location:

INSTALLATIONS AND UPGRADES --> By Categories --> SAP TECHNOLOGY
COMPONENTS --> SAP BI PLATF SUPPORT TOOL(SCN) --> SAP BI PLATF SPRT TOOL
SCN 2.1

7 Key Points to Take Home

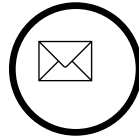
- Use BIPST on a client workstation and connect to each of your BI 4.x environments (Test, Dev, QA, Prod)
- Run/Schedule the Landscape Analysis Report regularly to record changes in the environment
- Review the Alert Summary to pro-actively catch potential issues
- Use the built in Landscape Tools to simplify your daily admin tasks
- Stay current with our Twitter feed to be notified when new versions are released. (Displayed in the BIPST dashboard)
- Save and attach the Landscape Analysis Report to your SAP support incidents to speed up processing
- BIPST is free to use and is updated on a regular basis

Your Turn!

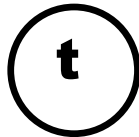
Toby Johnston



toby.johnston@sap.com



@biplatformtool



Thank You
Any Questions?

Please remember to complete your session evaluation

© 2018 SAP SE or an SAP affiliate company. All rights reserved.

No part of this publication may be reproduced or transmitted in any form or for any purpose without the express permission of SAP SE or an SAP affiliate company.

The information contained herein may be changed without prior notice. Some software products marketed by SAP SE and its distributors contain proprietary software components of other software vendors. National product specifications may vary.

These materials are provided by SAP SE or an SAP affiliate company for informational purposes only, without representation or warranty of any kind, and SAP or its affiliated companies shall not be liable for errors or omissions with respect to the materials. The only warranties for SAP or SAP affiliate company products and services are those that are set forth in the express warranty statements accompanying such products and services, if any. Nothing herein should be construed as constituting an additional warranty.

In particular, SAP SE or its affiliated companies have no obligation to pursue any course of business outlined in this document or any related presentation, or to develop or release any functionality mentioned therein. This document, or any related presentation, and SAP SE's or its affiliated companies' strategy and possible future developments, products, and/or platform directions and functionality are all subject to change and may be changed by SAP SE or its affiliated companies at any time for any reason without notice. The information in this document is not a commitment, promise, or legal obligation to deliver any material, code, or functionality. All forward-looking statements are subject to various risks and uncertainties that could cause actual results to differ materially from expectations. Readers are cautioned not to place undue reliance on these forward-looking statements, and they should not be relied upon in making purchasing decisions.

SAP and other SAP products and services mentioned herein as well as their respective logos are trademarks or registered trademarks of SAP SE (or an SAP affiliate company) in Germany and other countries. All other product and service names mentioned are the trademarks of their respective companies.

See <http://global.sap.com/corporate-en/legal/copyright/index.epx> for additional trademark information and notices.